

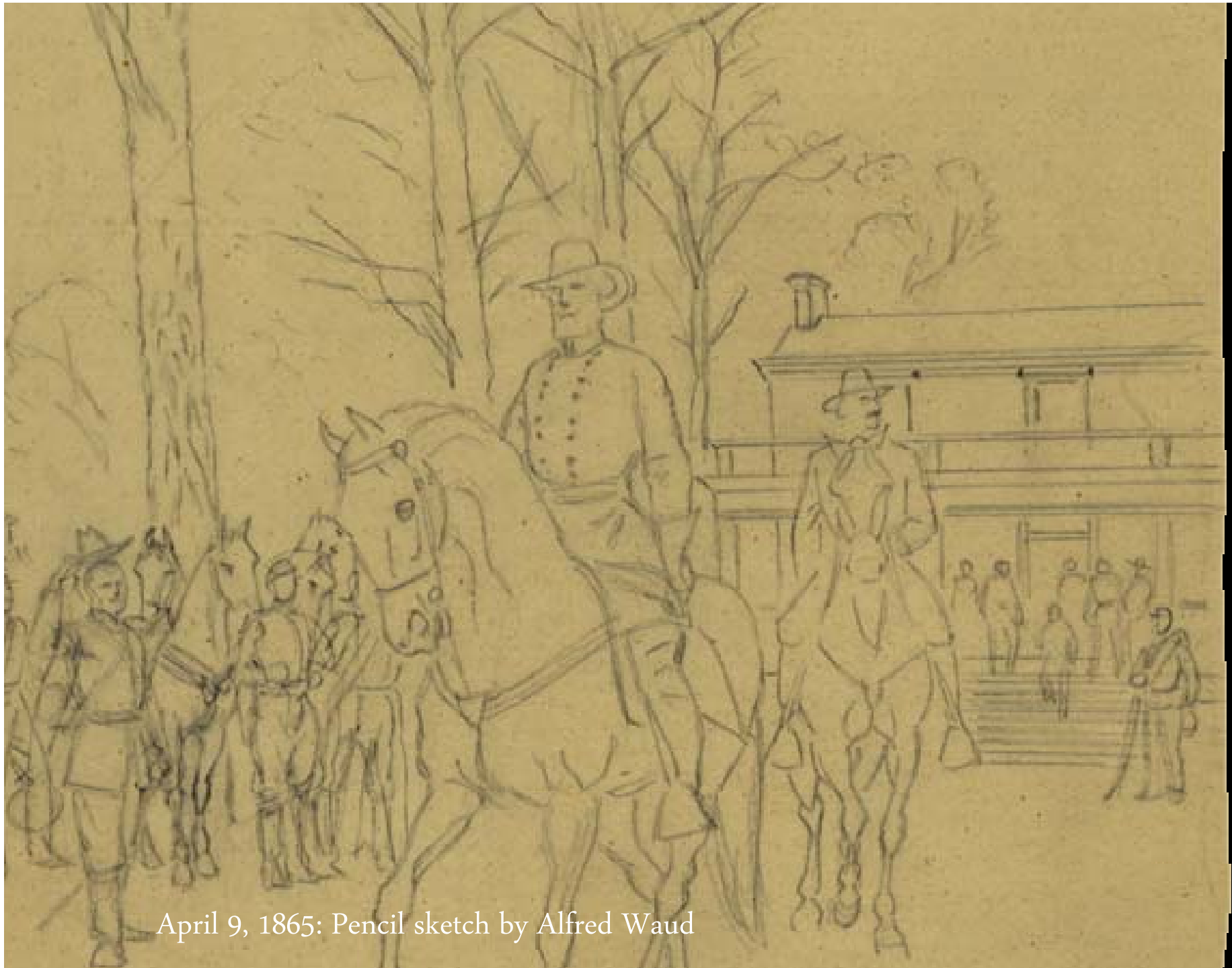
# A Time Line of Images of the McLean House





April 9, 1865: Pencil sketch by Eustice Collett





April 9, 1865: Pencil sketch by Alfred Waud







Circa Fall 1865: Wet plate photograph by Timothy O'Sullivan



Circa Fall 1865: Wet plate photograph by Timothy O'Sullivan





Circa Fall 1865: Wet plate photograph by Timothy O'Sullivan



Circa Fall 1865: Wet plate photograph by Timothy O'Sullivan?





Circa 1866: Painting by George Frankenstein





Circa 1865: Photograph for stereographic view.





Circa



Circa 1885: Photograph of house draped in mourning after Grant's death.







Circa 1891: Photograph of Myron Dunlap and Investors?







the house in





RUINS OF OLD McLEAN HOUSE, SURRENDER GROUNDS, APPOMATTOX, VA.

DT-108863

Spring 1920: W. E. Burgess postcard.



SCHOOL CHILDREN AMONG THE RUINS OF OLD M<sup>C</sup>LEAN HOUSE, SURRENDER GROUNDS.



APPOMATTOX C. H., VA.

Spring 1920: W. E. Burgess postcard.





August 1940: Photograph of the McLean house site by NPS staff.





August 1940: McLean house site with War Department Marker.





September 1940: Clearing of the McLean house site.







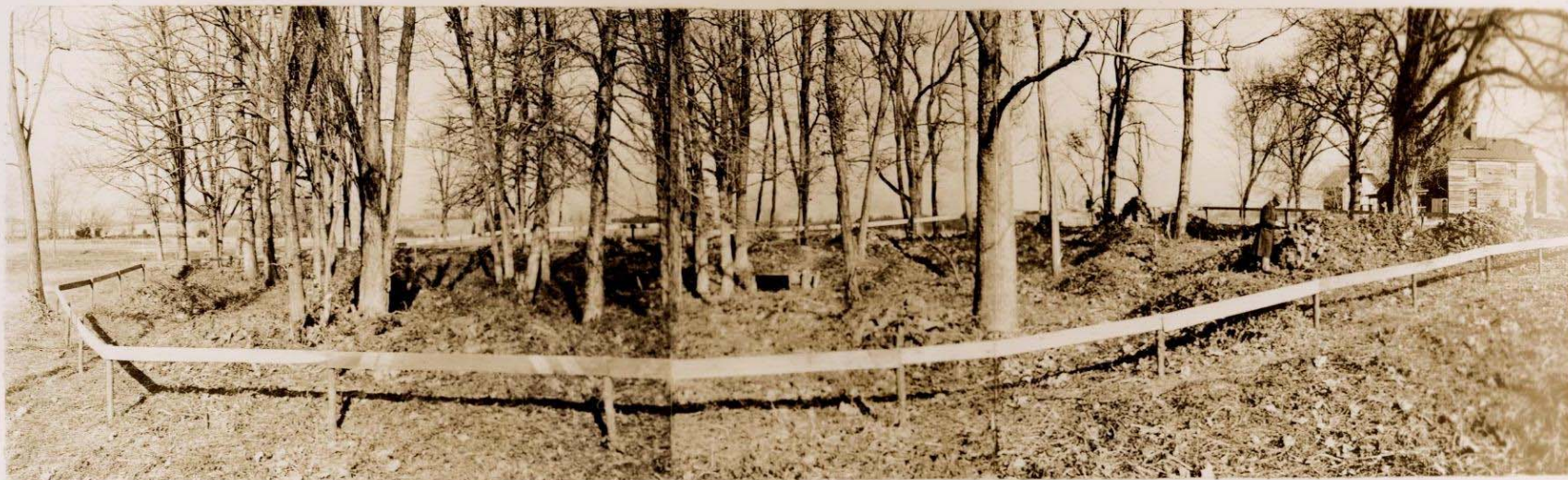


UNITED STATES  
DEPARTMENT OF THE INTERIOR  
NATIONAL PARK SERVICE

APPOMATTOX COURT HOUSE



NATIONAL HISTORICAL MONUMENT



MCLEAN HOUSE SITE AND ENVIRONS

~ BEFORE FINAL CLEARING, 1940.

LOOKING NORTH FROM BACK YARD. CENTER OF PHOTOGRAPH IS APPROXIMATE  
CENTER OF HOUSE SITE. THREE EXISTING VILLAGE STRUCTURES APPEAR  
AT UPPER RIGHT.





August 23, 1941: Mr. Ragland Featherston, born in the McLean House, talks with junior archeologist Preston Holder, kneeling, and Superintendent Hubert A. Gurney, and his son





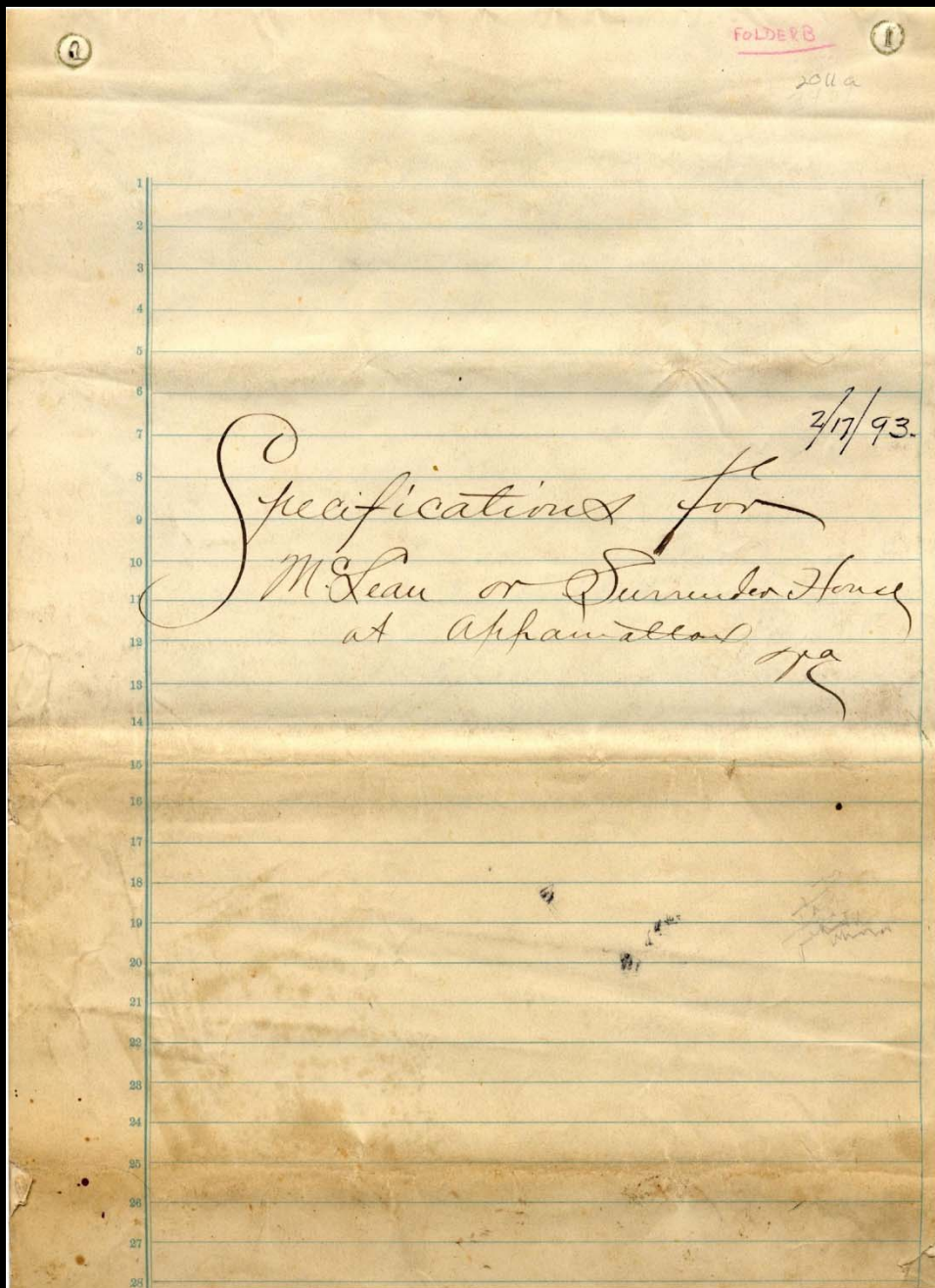
April 20, 1941: Archeology at the McLean house site by NPS staff.



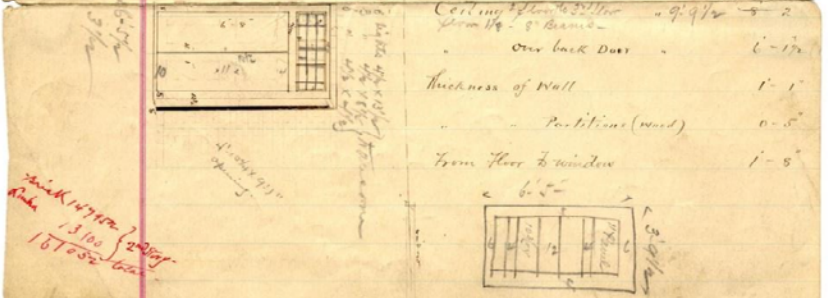
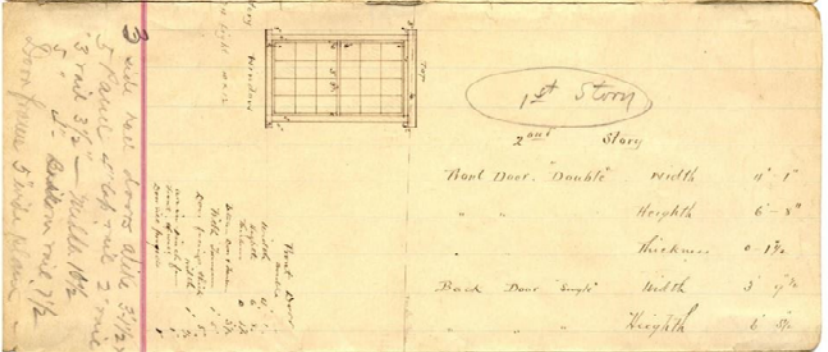
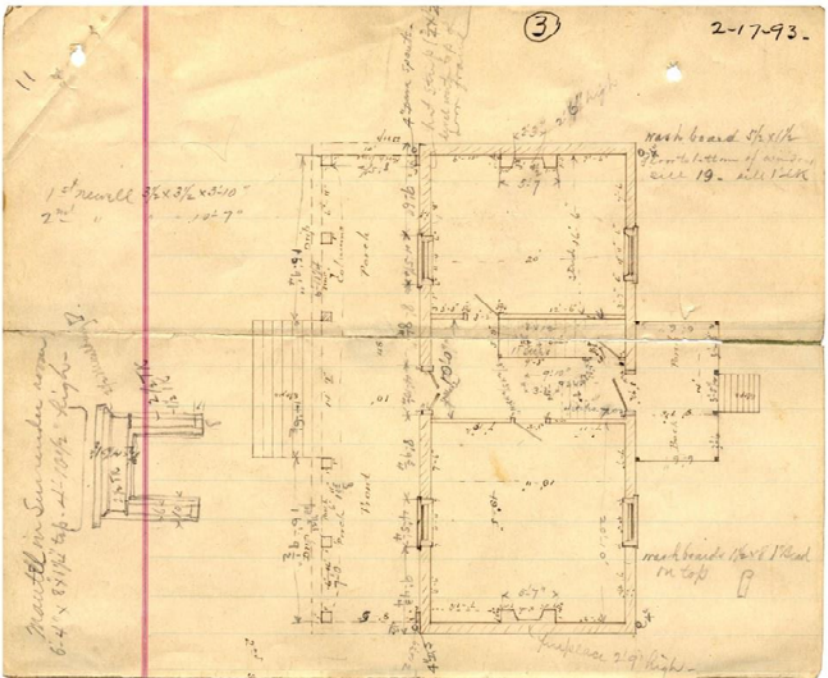


April 3, 1941: Uncovering of the hearth at the McLean house site.

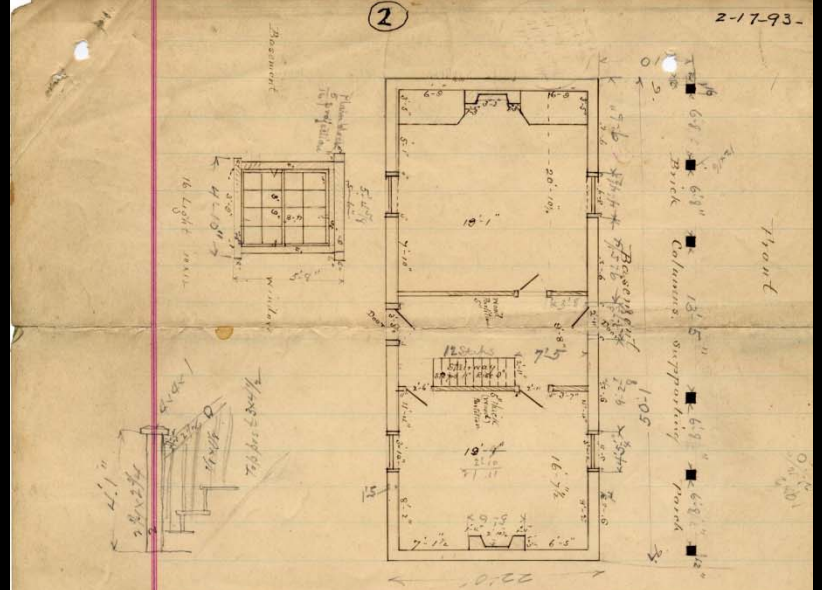
Specifications  
for the  
McLean House  
drawn before  
dismantling  
and used  
during the  
house's  
reconstruction.







14.700 } 2<sup>nd</sup> story  
 13.100 }  
 16.000 } base



Basement Story.

Front Door. Height 6' 9/2 width 4' 1/2  
 Back Door " 6' 5/2 " 2' 11"

Ceiling " 8'-9" 8'-10 floor beams floor beams  
 Height windows from floor 2'-8"

Thickness of Wall Sidewall 5' and 1-6"  
 Partitions (wood) 5'  
 10' beam to second story

Masonry set out 1960. } for Basement 199400.  
 Work work " 3500 }



June 17, 1948: Reconstruction of the house with War Dept. marker moved.





November, 1949: Setting locust trees to replace historic ones in front of the house.





April 16, 1950: Dedication ceremony at the McLean House.





April 16, 1950: U.S. Grant III and R.E. Lee IV cut the ribbon at the dedication ceremony at the McLean House.





Circa the 1950s: McLean House with Highway 24 still out in front.



August 1964:  
This McLean  
House  
photo by Bruce  
Dale appeared  
in the April  
1965 Civil War  
Centennial  
issue of  
National  
Geographic  
magazine.







April 1965: The McLean House at the Centennial.









July 1983: photo courtesy Elizabeth Sherriff





Winter 2015





April 11, 2015: photo courtesy Shenandoah Sanchez.