

Road and Trails

- | | | | | | | | |
|--|---------------|--|--------------------|--|----------------------|--|----------|
| | Hike | | Wagon | | Improved Gravel Road | | Railroad |
| | Horse | | Multiple Use Trail | | Unimproved Road | | |
| | Mountain Bike | | Paved Road | | Federal Highway | | |

National Trails

- Sheltowee Trace
- John Muir Trail

Land Ownership

- National Park Service
- Private
- Scott State Forest

Points of Interest

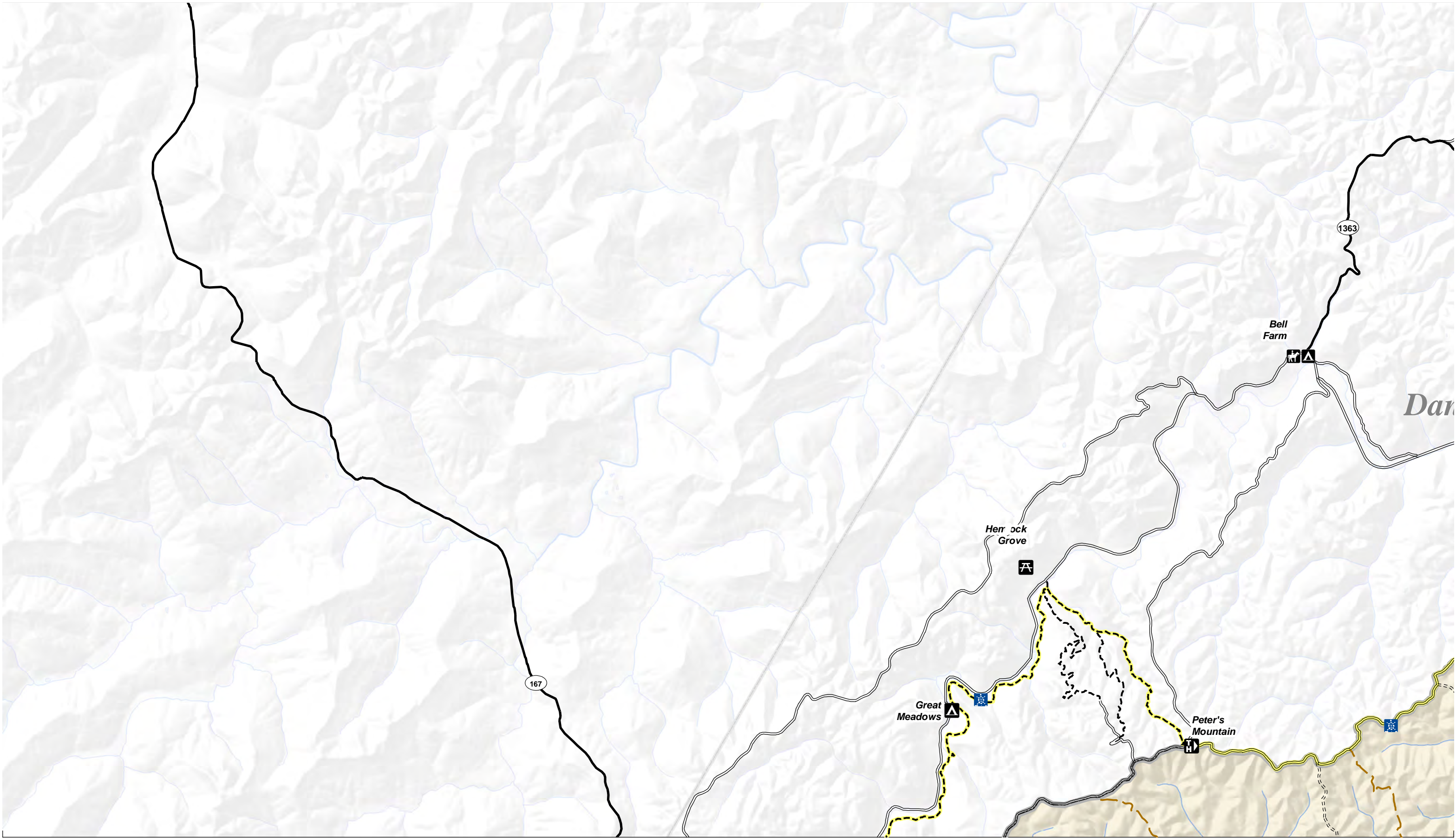
- | | | | | | |
|--|----------------|--|------------------|--|-----------|
| | Ranger Station | | Picnic Area | | Airport |
| | Visitor Center | | Camping | | Hospital |
| | Overlook | | Hiking Trailhead | | Arch |
| | Boat Launch | | Horse Trailhead | | Waterfall |



1:48,000

Sheet 1 of 9





Road and Trails

	Hike		Wagon		Improved Gravel Road		Railroad
	Horse		Multiple Use Trail		Unimproved Road		
	Mountain Bike		Paved Road		Federal Highway		

National Trails

	Sheltowee Trace
	John Muir Trail

Land Ownership

	National Park Service
	Private
	Scott Slate Forest

Points of Interest

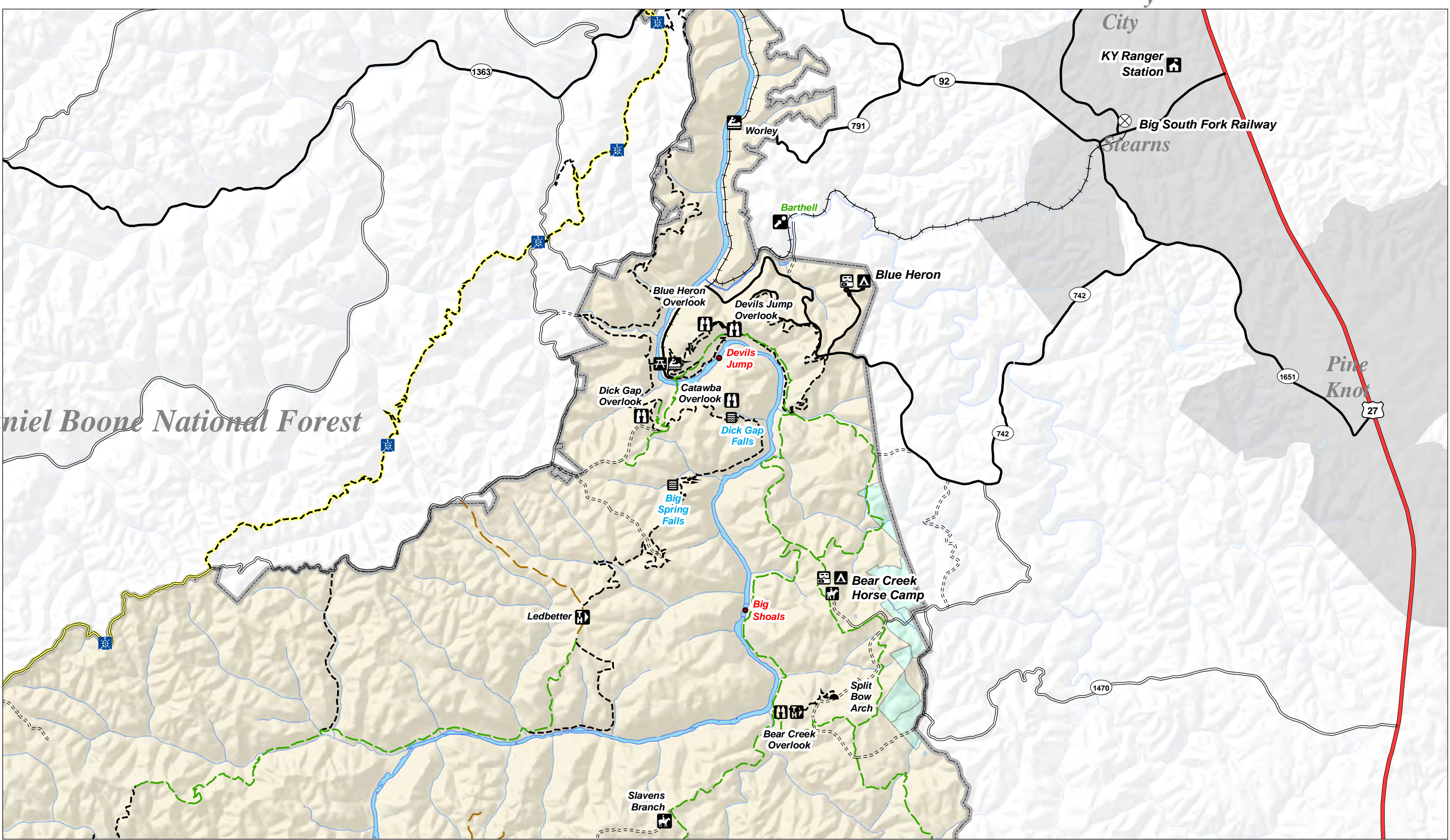
	Ranger Station		Picnic Area		Airport
	Visitor Center		Camping		Hospital
	Overlook		Hiking Trailhead		Arch
	Boat Launch		Horse Trailhead		Waterfall



1:48,000

Sheet 2 of 9

0 0.25 0.5 1 1.5 2 Miles



Road and Trails

--	--	--	--	--	--	--	--	--	--

National Trails

--	--

Land Ownership

--	--	--

Points of Interest

--	--	--	--	--	--	--	--

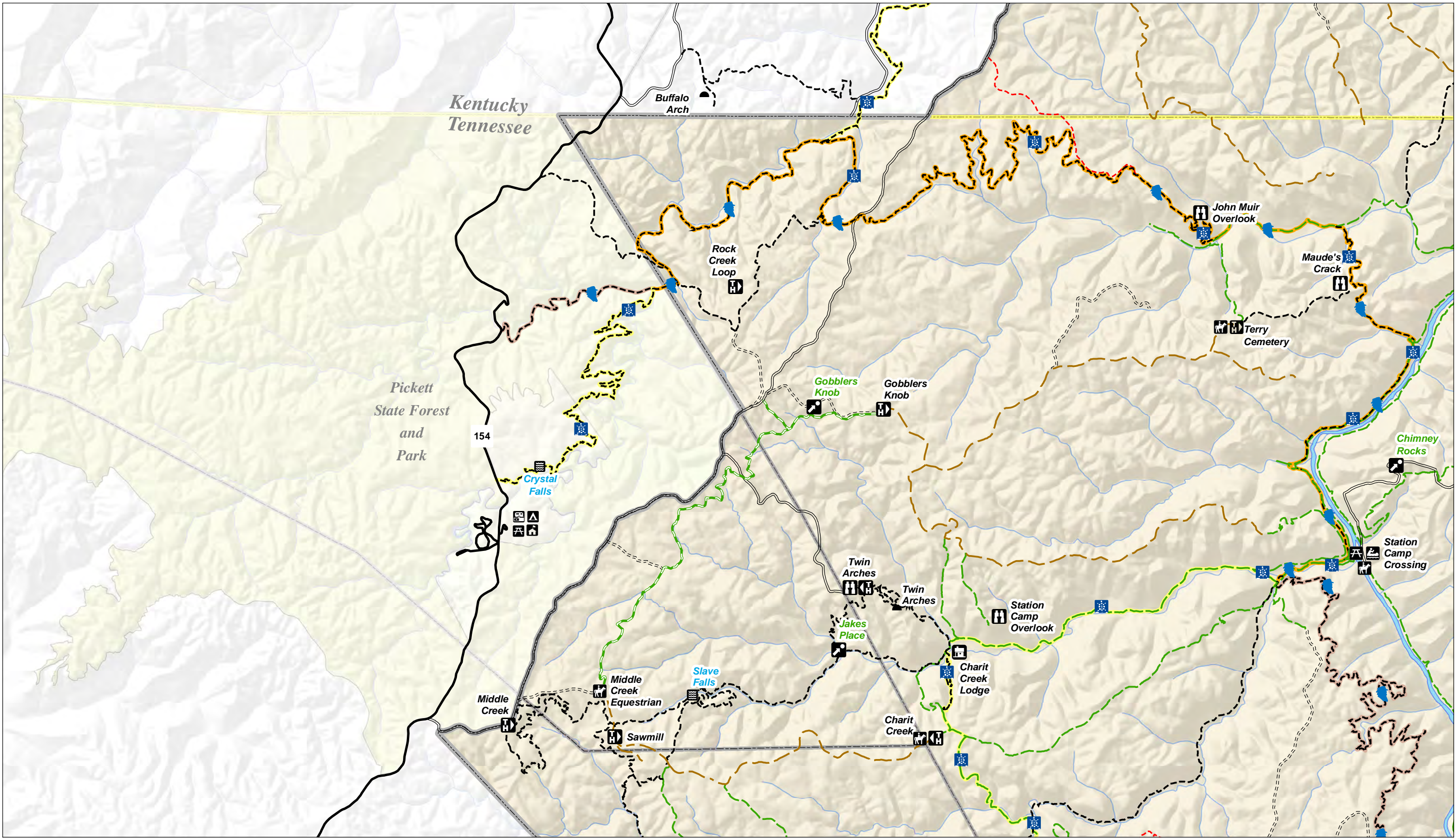
--	--	--	--

1:48,000

Sheet 3 of 9

0 0.25 0.5 1 1.5 2 Miles





Road and Trails

- | | | | | | | | | | |
|--|--|--|--|--|--|--|--|--|--|
| | | | | | | | | | |
|--|--|--|--|--|--|--|--|--|--|

National Trails

- Shelton Trace
- John Muir Trail

Land Ownership

- National Park Service
- Private
- Scott State Forest

Points of Interest

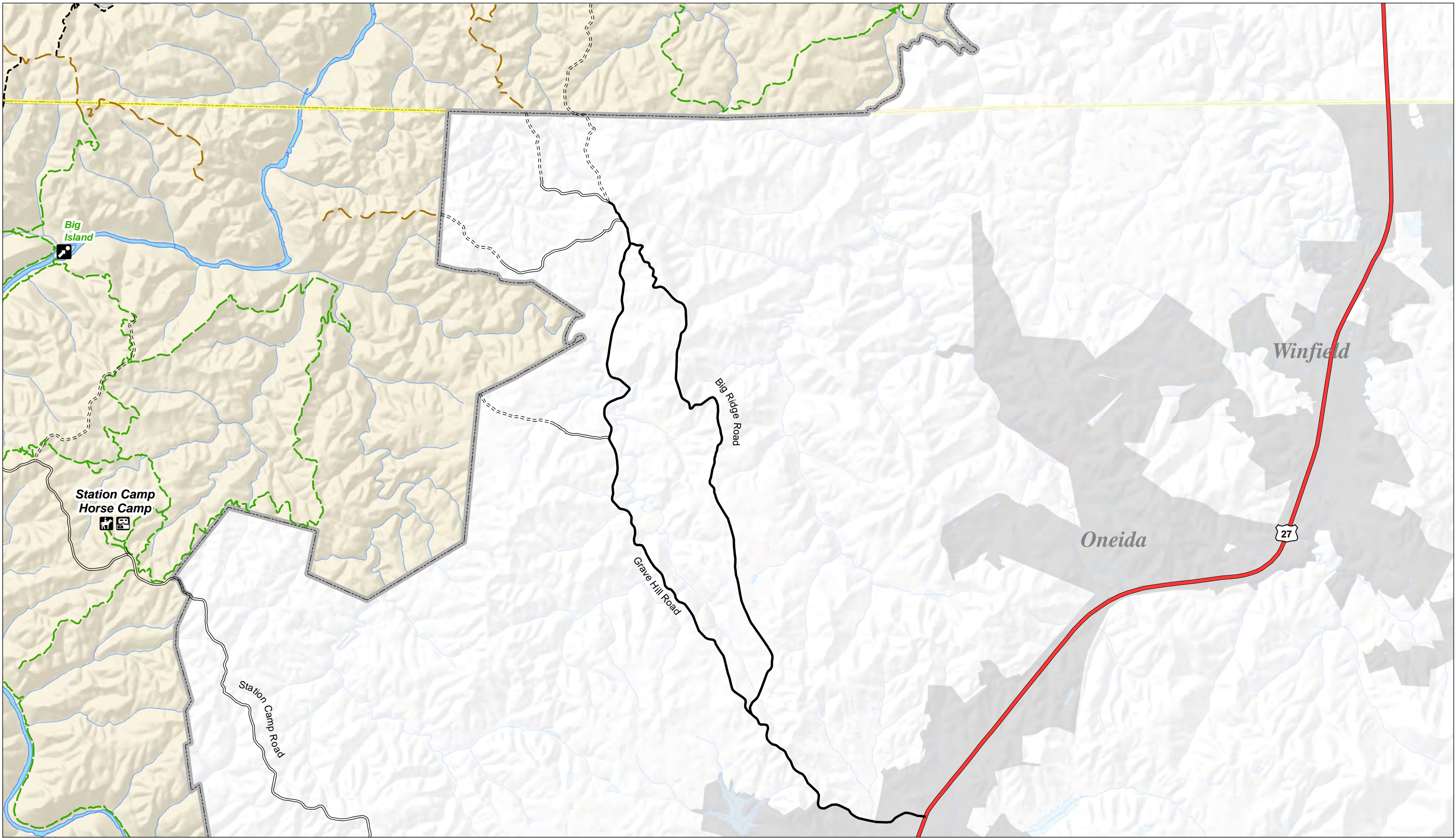
- | | | | | | | | |
|--|--|--|--|--|--|--|--|
| | | | | | | | |
| | | | | | | | |



1:48,000

Sheet 4 of 9

0 0.25 0.5 1 1.5 2 Miles



Road and Trails

National Trails

- Shelton Trace
- John Muir Trail

Land Ownership

- National Park Service
- Private
- Scott State Forest

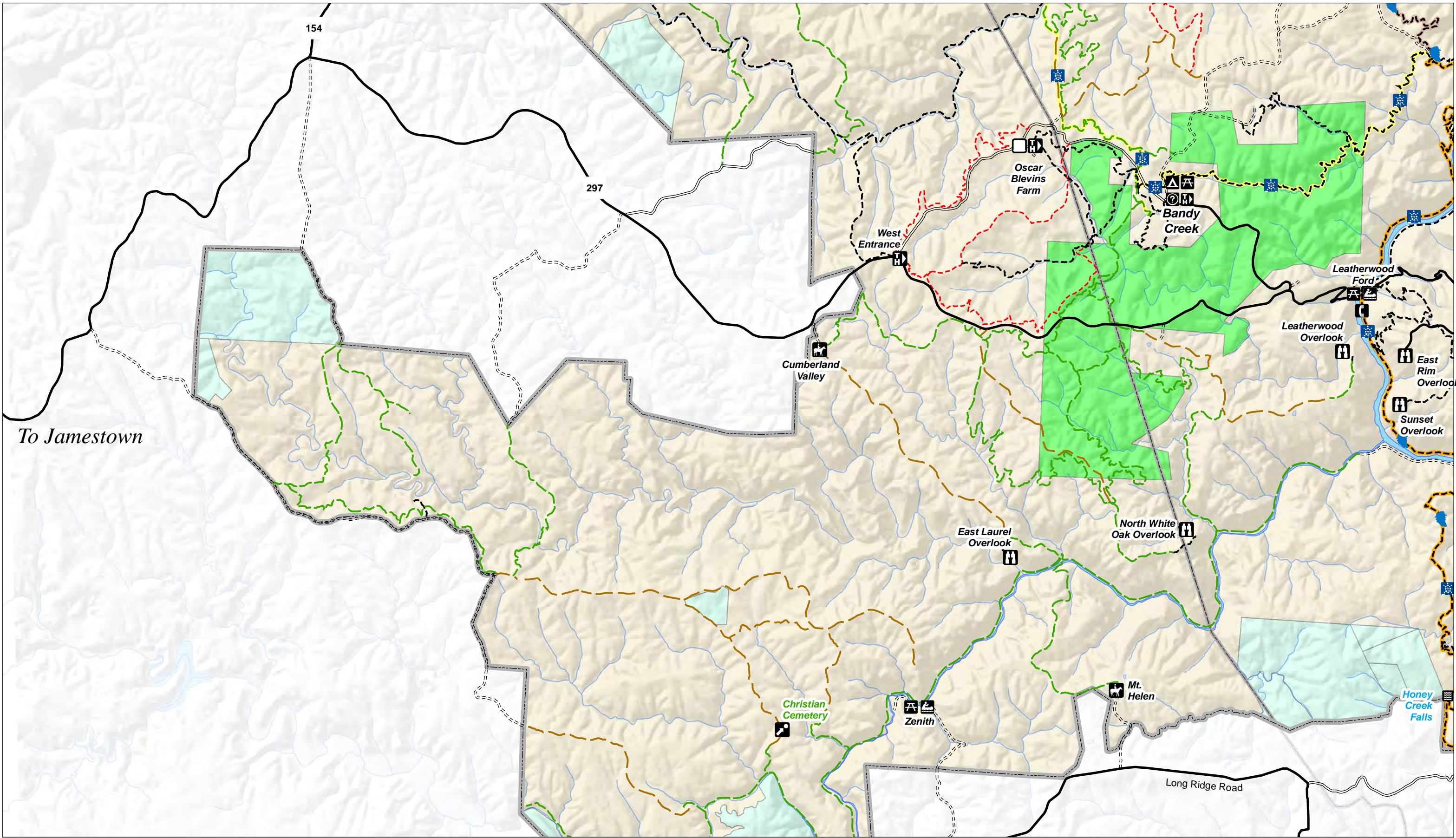
Points of Interest



1:48,000

Sheet 5 of 9

0 0.25 0.5 1 1.5 2 Miles



To Jamestown

154

297

Oscar Blevins Farm

Bandy Creek

West Entrance

Cumberland Valley

Leatherwood Ford

Leatherwood Overlook

East Rim Overlook

Sunset Overlook

East Laurel Overlook

North White Oak Overlook

Mt. Helen











Christian Cemetery

Zenith

Long Ridge Road

Honey Creek Falls


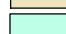

Road and Trails

-  Hike
-  Horse
-  Mountain Bike
-  Wagon
-  Multiple Use Trail
-  Paved Road
-  Improved Gravel Road
-  Unimproved Road
-  Federal Highway
-  Railroad













National Trails

-  Shelton Trace
-  John Muir Trail

Land Ownership

-  National Park Service
-  Private
-  Scott Slate Forest

Points of Interest

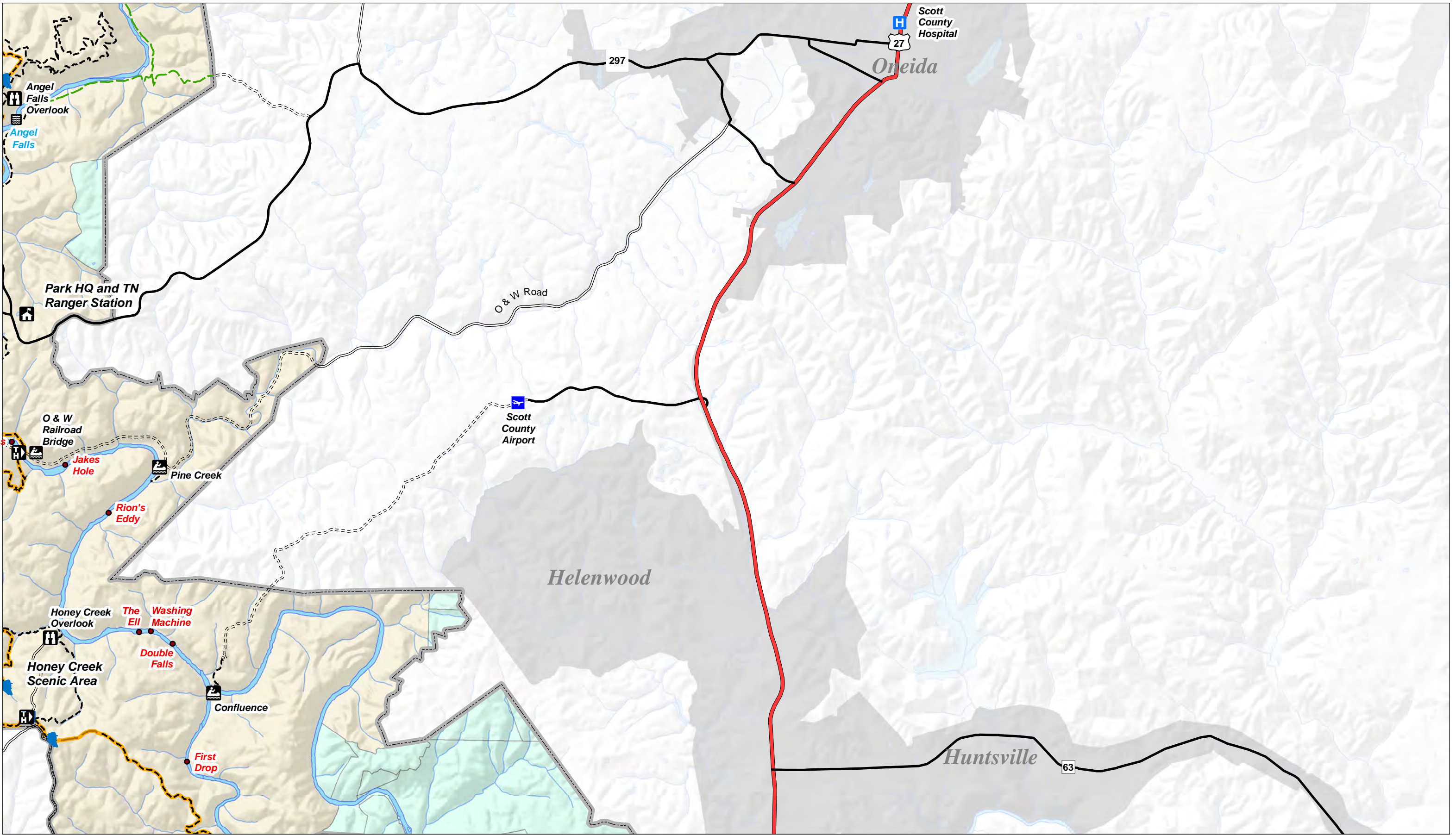
-  Ranger Station
-  Visitor Center
-  Overlook
-  Boat Launch
-  Picnic Area
-  Camping
-  Hiking Trailhead
-  Horse Trailhead
-  Airport
-  Hospital
-  Arch
-  Waterfall



1:48,000

Sheet 6 of 9





Road and Trails

National Trails

--	--

Land Ownership

	National Park Service
	Private
	Scott State Forest

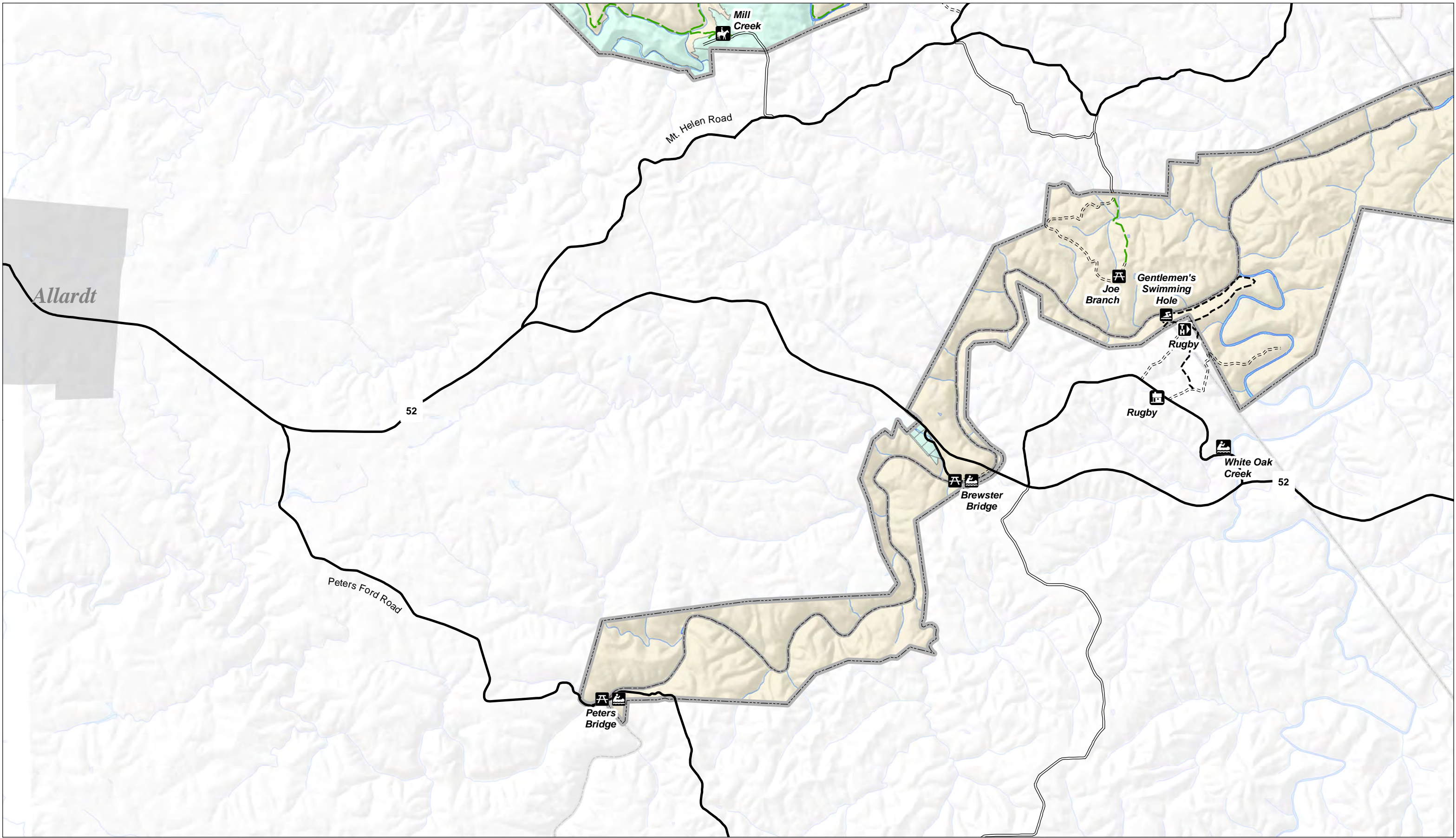
Points of Interest



1:48,000

Sheet 7 of 9

0 0.25 0.5 1 1.5 2 Miles



Road and Trails

--	--	--	--	--	--	--	--	--	--

National Trails

--	--

Land Ownership

	National Park Service
	Private
	Scott State Forest

Points of Interest

--	--	--	--	--	--	--	--

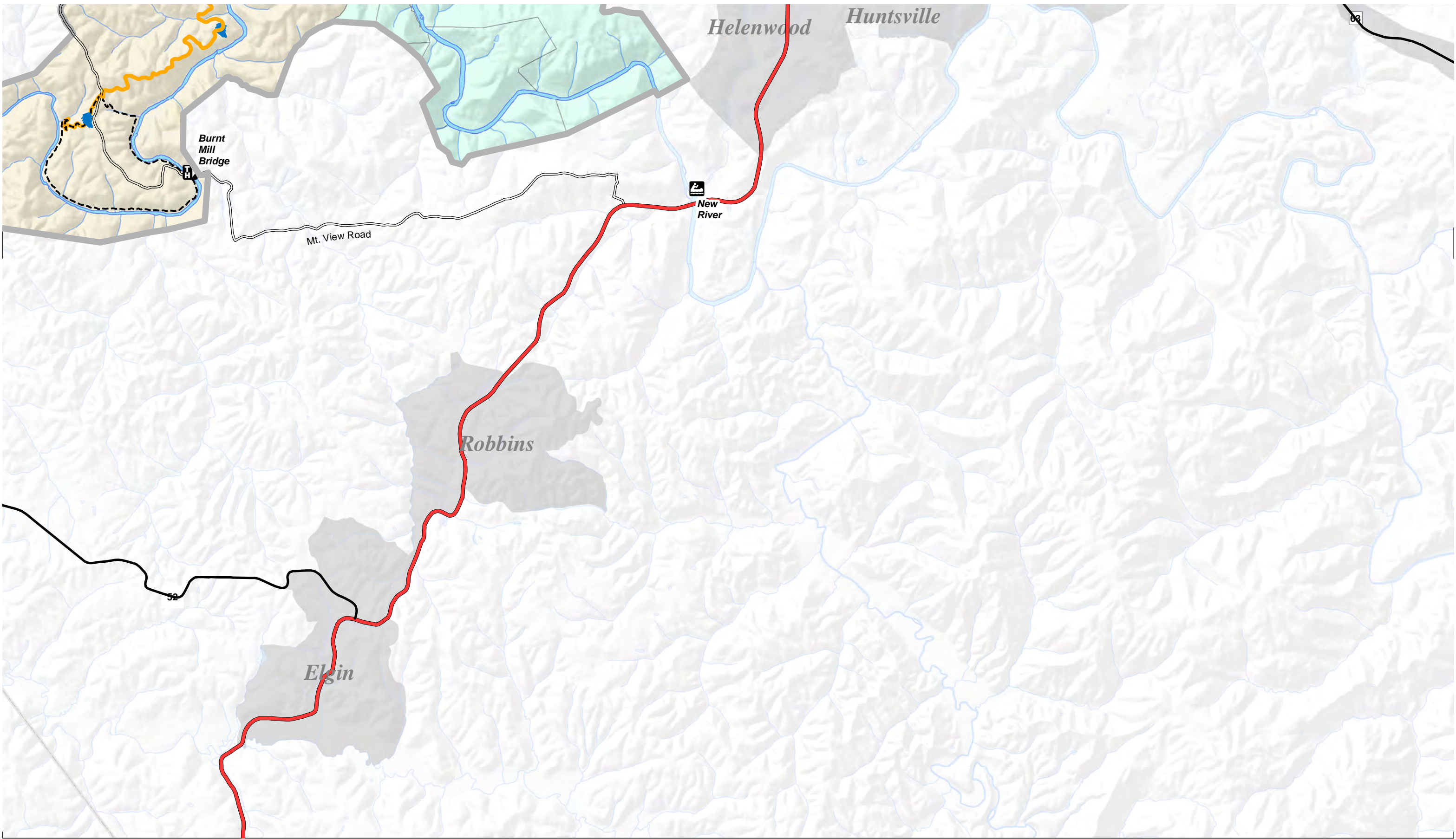
	Airport
	Hospital
	Arch
	Waterfall



1:48,000

Sheet 8 of 9

0 0.25 0.5 1 1.5 2 Miles



Road and Trails

	Hike		Wagon		Improved Gravel Road		Railroad
	Horse		Multiple Use Trail		Unimproved Road		
	Mountain Bike		Paved Road		Federal Highway		

National Trails

- Shelton Trace
- John Muir Trail

Land Ownership

- National Park Service
- Private
- Scott Slate Forest

Points of Interest

- Ranger Station
- Visitor Center
- Overlook
- Boat Launch
- Picnic Area
- Camping
- Hiking Trailhead
- Horse Trailhead
- Airport
- Hospital
- Arch
- Waterfall



1:48,000

Sheet 9 of 9

0 0.25 0.5 1 1.5 2 Miles