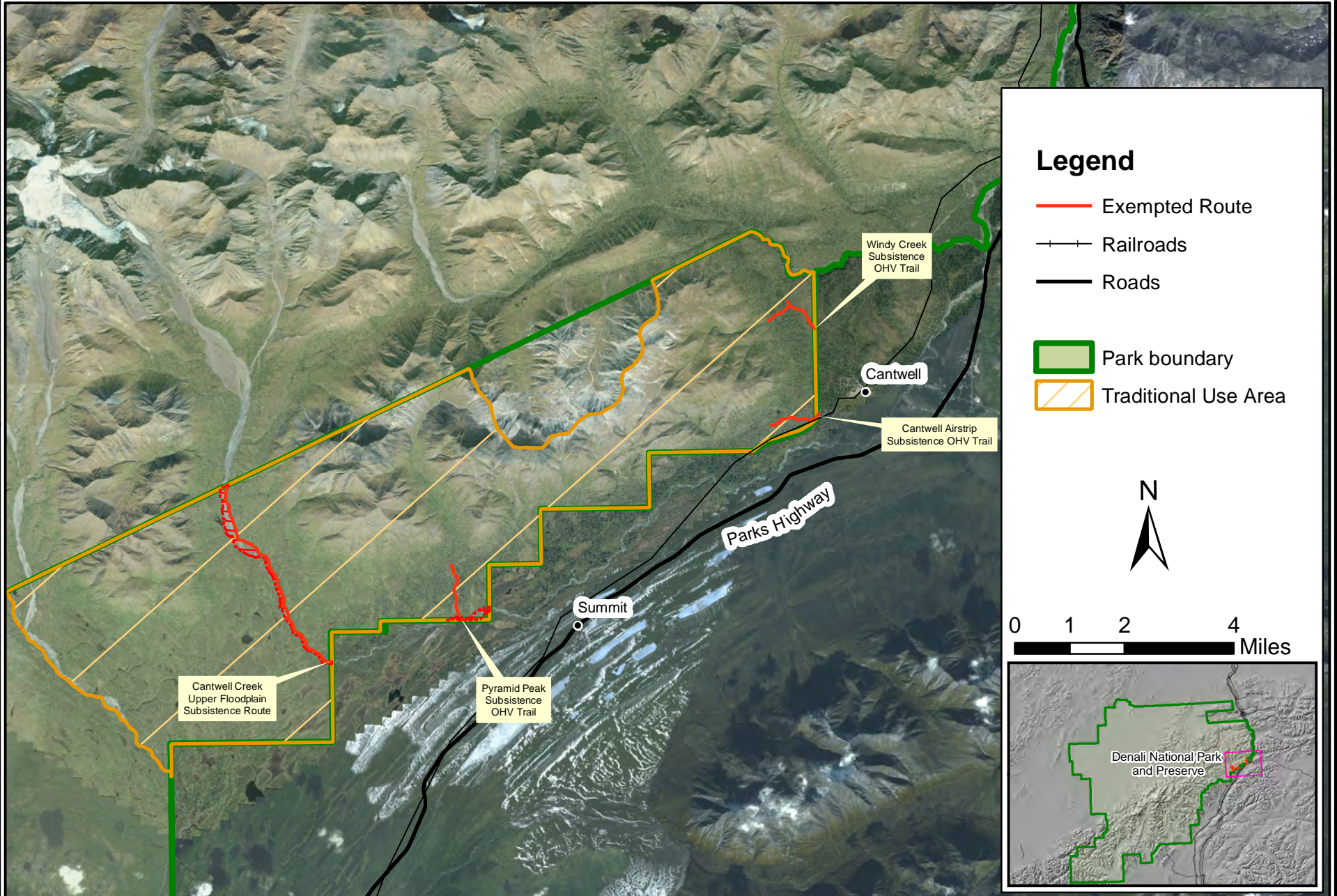


# Cantwell TUA OHV Exempted Routes

Denali National Park and Preserve

Alaska Region  
National Park Service  
U.S. Department of the Interior

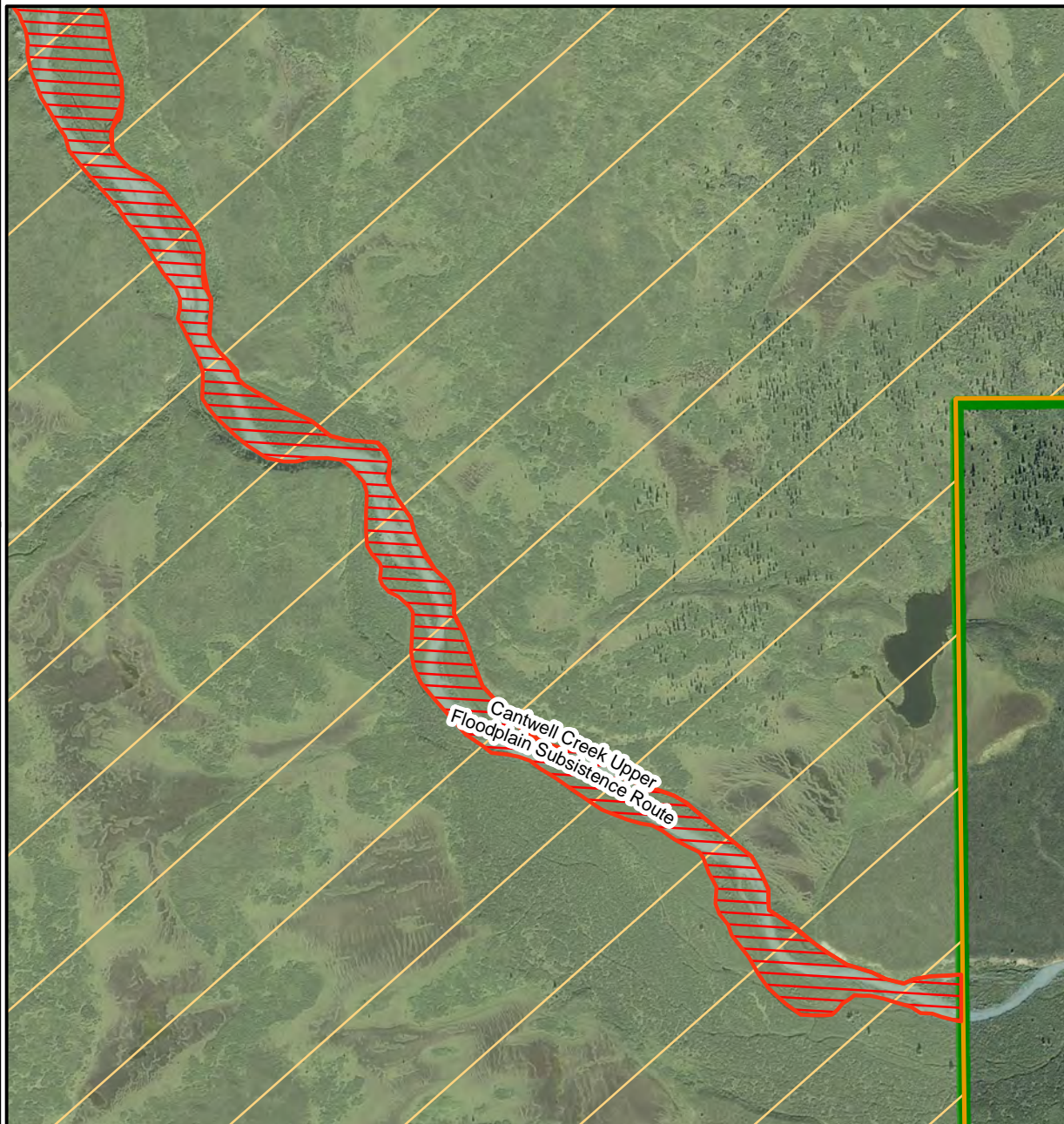




# Upper Cantwell Creek Trail Segment 1

Denali National Park and Preserve

Alaska Region  
National Park Service  
U.S. Department of the Interior

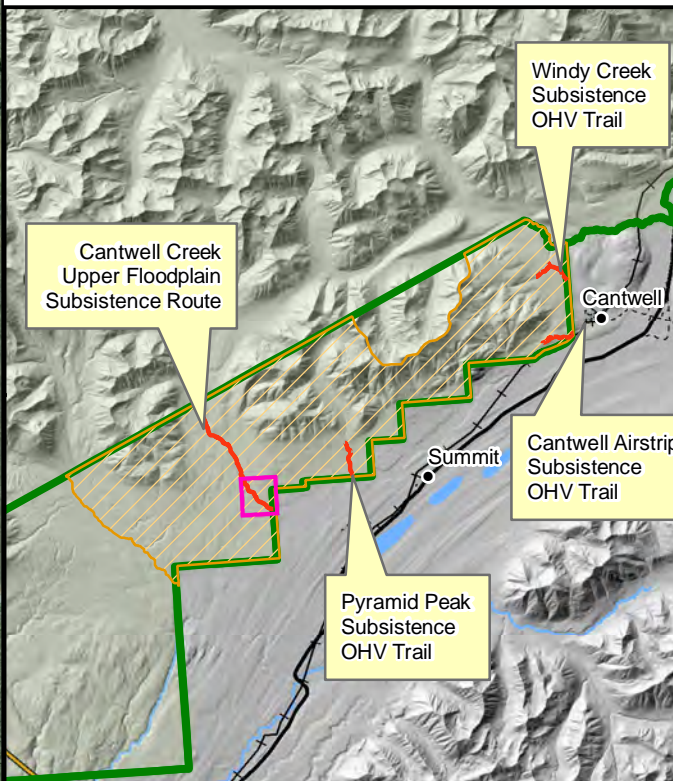


## Legend

- Exempted Route
- Traditional Use Area
- Park boundary



0 0.125 0.25 Miles





# Upper Cantwell Creek Trail Segment 2

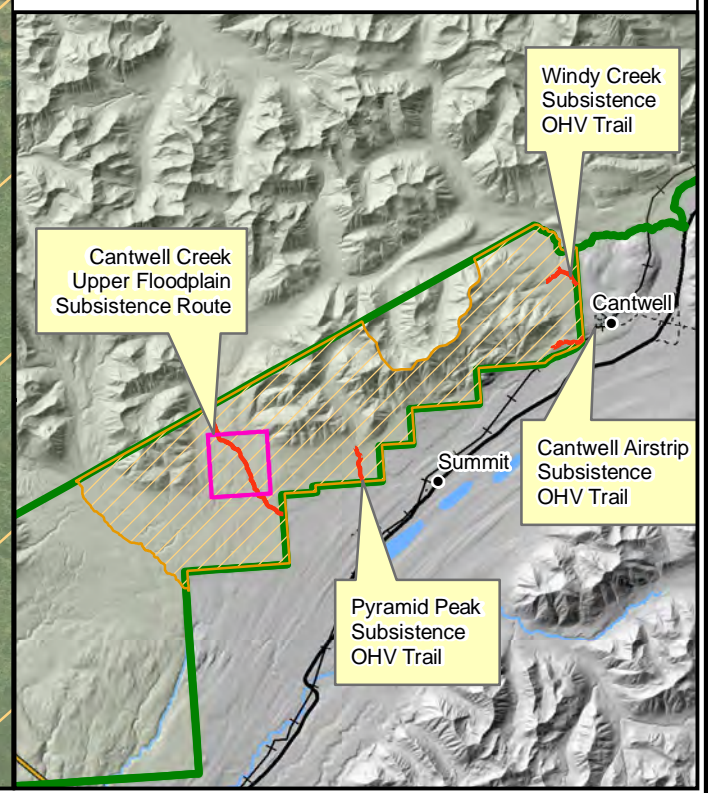
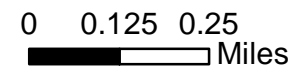
Denali National Park and Preserve

Alaska Region  
National Park Service  
U.S. Department of the Interior



## Legend

- Exempted Route
- ▨ Traditional Use Area
- ▭ Park boundary

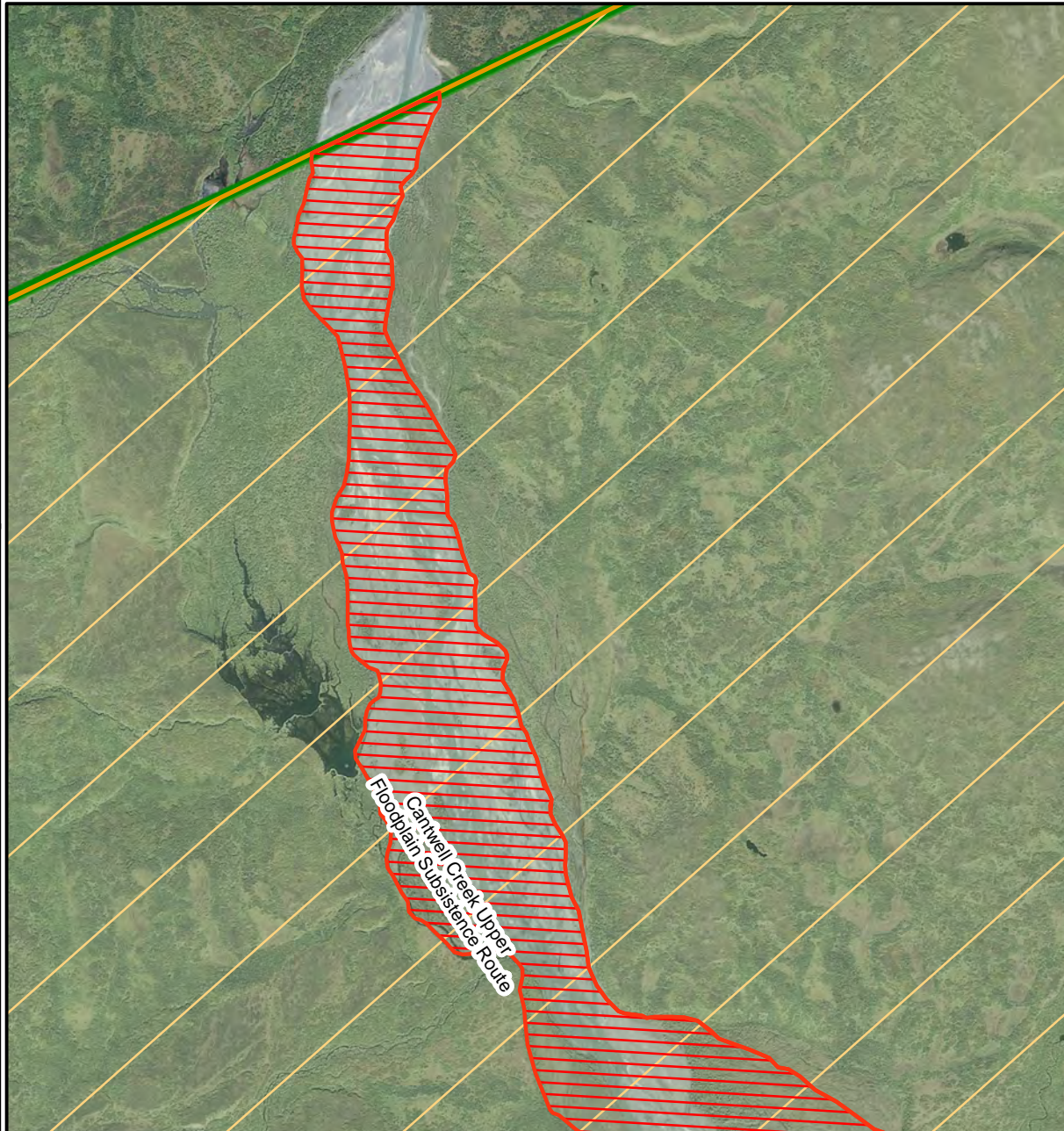




# Upper Cantwell Creek Trail Segment 3

Denali National Park and Preserve

Alaska Region  
National Park Service  
U.S. Department of the Interior

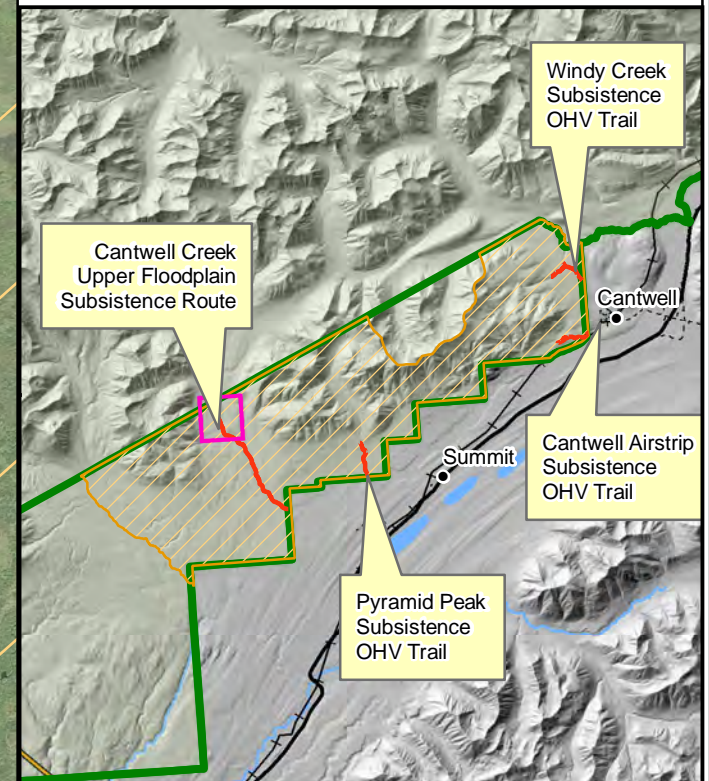


## Legend

- Exempted Route
- Traditional Use Area
- Park boundary



0 0.125 0.25  
Miles

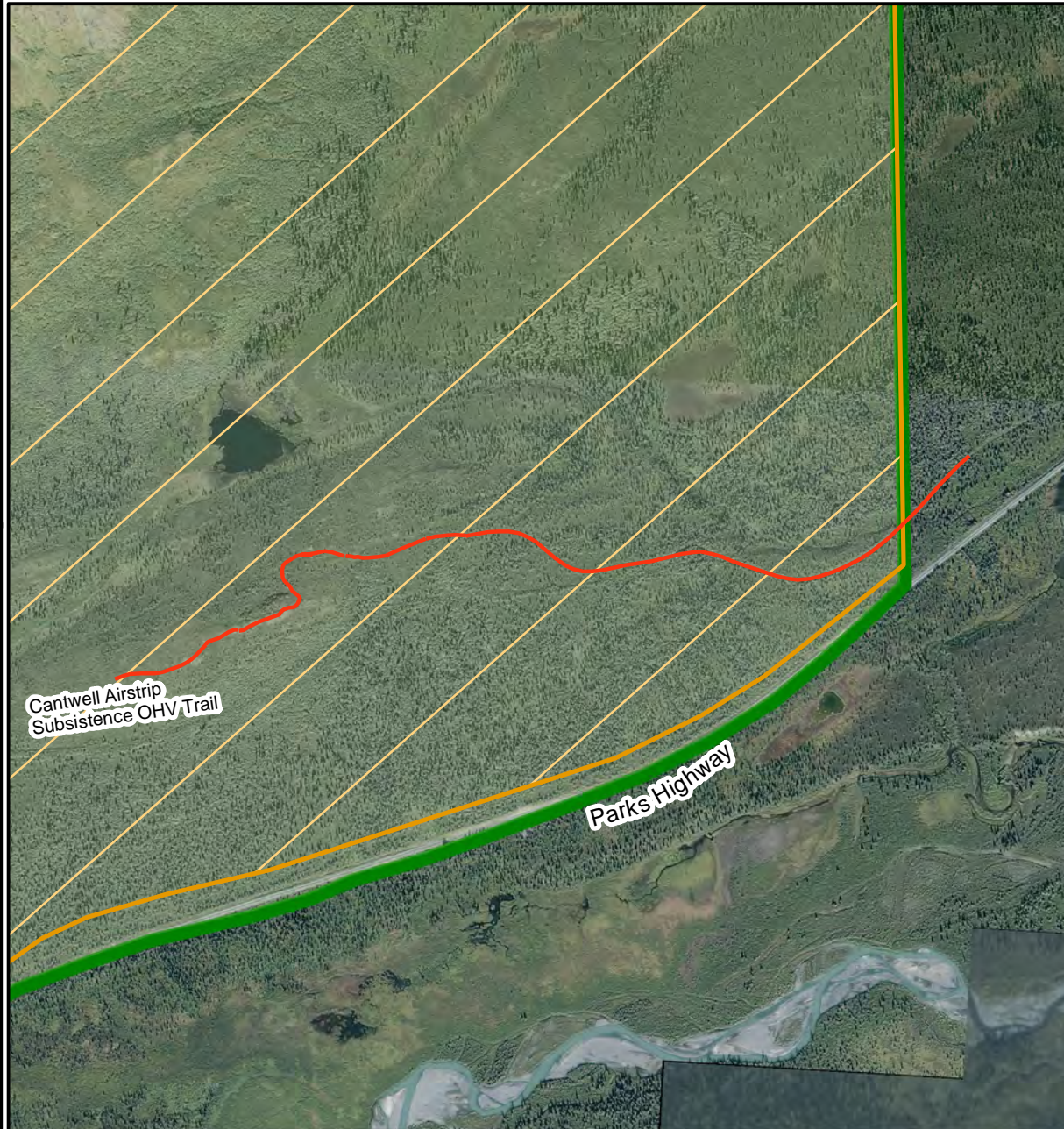




# Cantwell Airstrip Trail

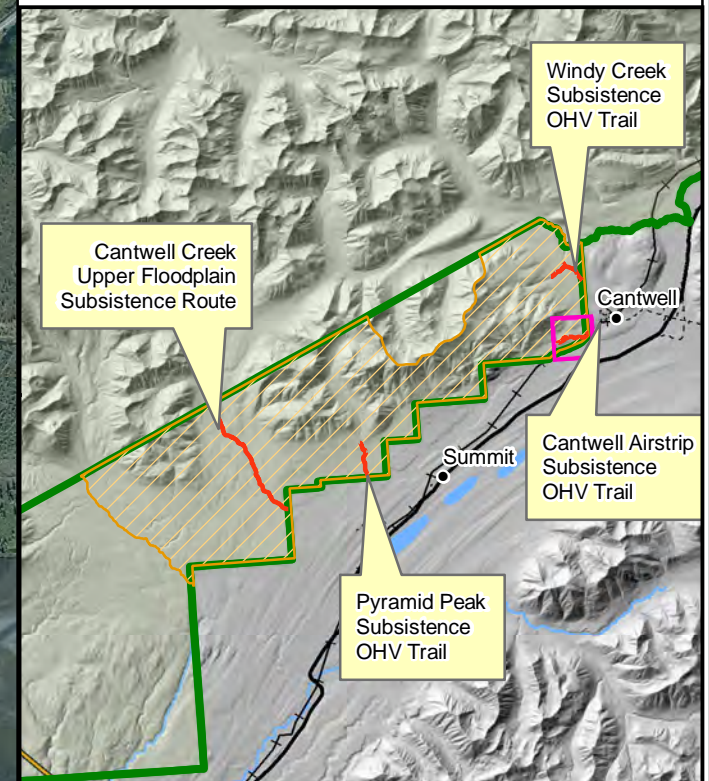
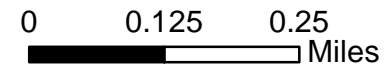
Denali National Park and Preserve

Alaska Region  
National Park Service  
U.S. Department of the Interior



## Legend

- Exempted Route
- ▨ Traditional Use Area
- ▭ Park boundary

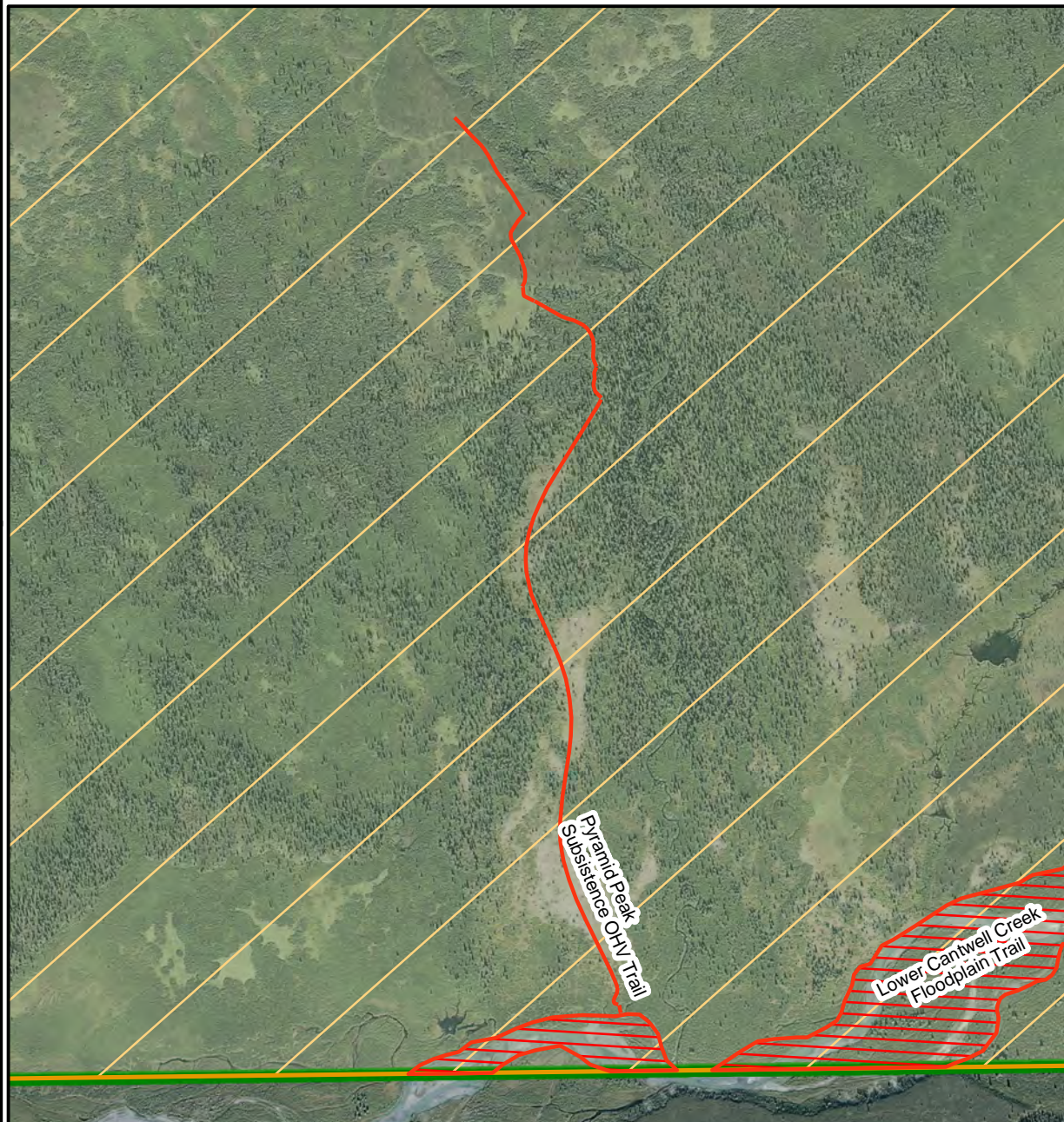




# Pyramid Peak Trail and Lower Cantwell Creek Trail

Denali National Park and Preserve

Alaska Region  
National Park Service  
U.S. Department of the Interior

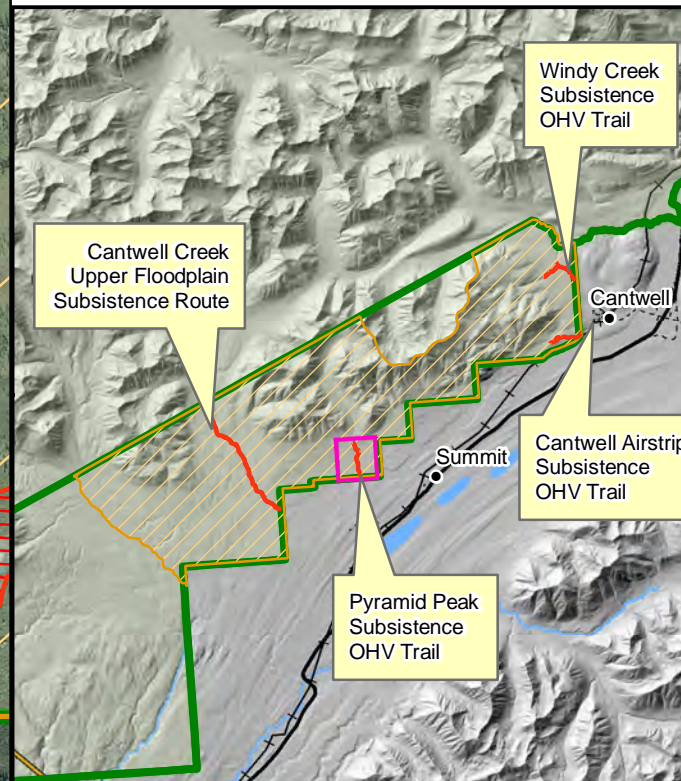


## Legend

- Exempted Route
- Traditional Use Area
- Park boundary



0 0.125 0.25 Miles





# Windy Creek Trail

Denali National Park and Preserve

Alaska Region  
National Park Service  
U.S. Department of the Interior



## Legend

- Exempted Route
- ▨ Traditional Use Area
- ▭ Park boundary

