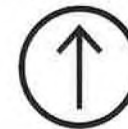


Self-Guided Walking Tour of Historic Coupeville

NORTH



LEGEND:

- Walking Tour Route
- P Public Parking
- Park
- R Restroom
- ↑↑ Public Beach Access

0 300
SCALE (feet)

To S.R. 20, Fort Casey,
Coupeville Ferry and Fort Ebey

44 -- Continue 2 blocks South to corner of
3rd St. and N. Main St.

Self-Guided Walking Tour of Historic Coupeville

The walking tour begins at the information kiosk at the foot of the Town Wharf (Front and Alexander streets). The entire tour is about 1.9 miles, but it can easily be shortened. (Please see the back of the brochure for a concise history of the area and context of the town.)

Coupeville is one of Washington's oldest towns, and the only town within Ebey's Landing National Historical Reserve (NHR). Many buildings remain much as they were over a



century ago; thirty-two date back to the Territorial Era of 1850-1875. In 1978, Congress designated Ebey's Landing the nation's first National Historical Reserve in order to preserve and protect this historic rural community. Although the Reserve is a unit of the National Park system, most of the property remains privately owned, and Coupeville functions in the same way as any other town in the state.

Early settlement in Coupeville makes sense considering its location at the very gateway to Puget Sound. Ebey's Landing, on the Strait of Juan de Fuca, sits at a great turnstile of the three branches of the Salish Sea. The area's fertile prairies – rare in western Washington – attracted Midwestern farmers, and the protected harbor of Penn Cove was a magnet for New England maritime merchants. Attracted by the Oregon Donation Land Law of 1850, the first settlers from "the States" set up housekeeping on Central Whidbey Island.

The 320-acre donation land claim of Thomas and Maria Coupe, who arrived in 1852, forms the portion of Coupeville east of Main Street; the claim of John Alexander, who arrived in 1851, forms the western portion. We can trace the difference in the neighborhood to those two

claimants. The land of mariner Capt. Coupe was platted as a residential neighborhood in 1883. The fields of Alexander were under the plow until the second half of the twentieth century.

The buildings on the tour represent a broad range of structures, from the homes of the earliest settlers and entrepreneurs to community buildings of the 1940s. Nearly all types of buildings typical of a small town are found, including stores, churches, lodge halls, garages and warehouses. While most are simple vernacular styles, others feature elegant Queen Anne and Italianate ornamentation. Keep an eye out for Coupeville's earliest Territorial-Era buildings of the 1850s-1860s, and the next generation – the Victorian houses built by H.B. Lovejoy in the 1880s-1890s. This rich architectural legacy makes Coupeville unique in the Pacific Northwest.

Key to houses: ♦ Territorial Era ♥ Built by Lovejoy

1. Coupeville Wharf and Warehouse (1905)

Foot of N. W. Alexander Street

This peaceful community was once the heart of Whidbey Island. Early settlements relied on boats for both goods and travel. Regular steam boat service — the famous "mosquito fleet" — ran from the 1890s until 1937, connecting Coupeville with Seattle, Everett and numerous small towns. The growing popularity of the automobile and the construction of the Deception Pass Bridge in 1937 brought this era to an end.

This was the town's fourth wharf, built in 1905 by a group of local farmers and merchants who wanted a structure long enough that boats could unload at low tide. This wharf extends 500 feet into Penn Cove. It is now owned and operated by the Port of Coupeville.

2. Blockhouse Inn (Site) (1870)

Island County Historical Museum (1989)

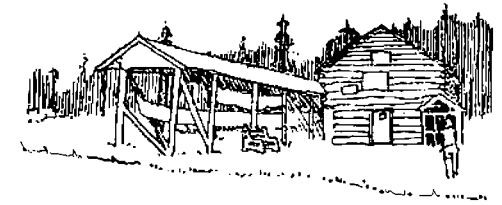
908 N. W. Alexander Street

When you got off the boat, you came to one of the state's oldest hotels, first opened in 1870 by Frances Alexander Fay, the widow of the pioneer, John Alexander. The attractive, substantial building had numerous names over the years, including the State, the Pioneer, and the Starwana.

It was still operating as the Blockhouse Inn, when it burned down in 1968. The historical museum was built on the site in 1989.

3. Alexander Blockhouse (1855) ♦

908 N. W. Alexander Street



Next to the museum is the log blockhouse built by John Alexander in 1855 as protection against a possible Indian skirmish. Originally located nearby, it was moved here in the 1930s. To the north stands a cross, erected at Ebey's Landing in the 1840s for a short-lived Catholic mission. On the south side is a display of vintage Indian racing canoes.

4. Gillespie Meat Market (1887)

24 N. W. Front Street

This tiny building was first built by James Gillespie and housed a meat market, which was later run by Elwell and Howard Libbey.

5. Front Street

From this vantage point, Front Street looks much as it did in the early 20th century (except for the pavement and the number of cars.) This was the center of commerce on the island, where people came to buy groceries, hardware, clothing and medicine, to do legal business or to visit a doctor or dentist.

6. Cushen Ford Dealership (1925)

23 N. W. Front Street

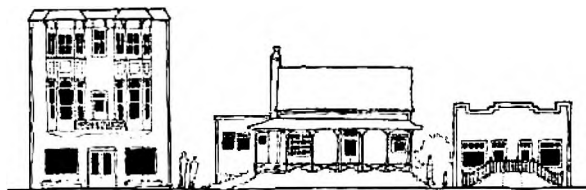
Right across from the livery stable, Cushen Ford, one of the island's first auto dealerships and garages, opened in 1925. In the 1930s-40s, Whidbey Dairy Products was housed here, followed by a grocery store and then a part of Lindsay's Marina, once located across the street. The building is actually concrete, and once

had large display windows, typical of an auto showroom. The windows were filled in and wood cladding added when it was transformed into a mini-mall in 1974.

7. Terry's Dryer/Gillespie's Livery Stable (1897)

22 N. W. Front Street

The Coupeville Mill first stood on this site, but in 1897 this structure was erected to capitalize on the Klondike gold rush. Charles Terry had a large orchard and hired local women to dry prunes for shipment to Alaskan miners. Potatoes and onions were also processed. In 1908, Carl and Laurin Gillespie, sons of the butcher next door, opened a livery stable here, renting out horses and later cars. There is a second-floor opening to the hayloft.



8. Island County Abstract Office (1890)

21 N. W. Front Street

Coupeville became the county seat in 1881, bringing numerous travelers on legal business. Many of the early businesses focused on court-house activities, including several law offices and the abstract office, where property title documents were prepared. In 1969 the northwest specialty coffee culture was born here with the establishment of Stewart Brothers Coffee (SBC), now known as Seattle's Best Coffee. It was once a meat market, located farther east on Front Street, and was moved here in the early 1900s.

9. Island County Times (1906)

19 N. W. Front Street

Whidbey Island has had a succession of local newspapers. The Times began publishing in 1891, and eventually became incorporated into the Whidbey News Times, which is still published in Oak Harbor.

10. Judge Lester Still Law Office (1909)

17 N. W. Front Street

Judge Still was a prominent local official and entrepreneur who built the log Whid-Isle Inn. This inn still exists as the Captain Whidbey Inn, farther west of Coupeville on Penn Cove.

11. Elkhorn Saloon (1883)

15 N. W. Front Street

Although known as the Elkhorn Saloon, this was a saloon only briefly. For many years it was a drug store and doctor's office and, later, the area's first real post office. This was the first false front building built in Coupeville, in 1883. A tall facade was added to a simple wooden building to make it look larger and grander. The style remained popular here for many years, making it difficult to tell newer buildings from the older ones.

12. Benson Confectionery (1916)

16 N. W. Front Street

Sam and Nellie Benson originally had a candy and gift shop on the first floor and lived upstairs. A variety of businesses, including a liquor store, have occupied the store since then. Like many buildings on Front Street, the concrete foundation was added later, in the 1970s.

13. Post Office (1938)

11 N. W. Front Street

This small building was built in 1938 as the second post office, which it remained until 1956. It is a concrete block structure, originally a good example of simple Moderne design popular in the 1930s. It was clad in wood siding for the filming of the movie *Practical Magic* in 1999.

14. Central Hotel/Good Templars Hall (Site)

Southeast corner of N. W. Front Street and Grace Street

Two major buildings once stood on this site. The 1884 Central Hotel was a local institution, with



a porch from which patrons could survey all of Front Street. It was locally famous for its fine wines, liquors and cigars. It was so popular that its bar expanded into the second floor of the neighboring building—ironically, the hall of the Good Templars, a temperance organization. After the hotel burned, the lot remained vacant for decades until this new building was constructed in 2000. Due to design guidelines in the historic district, the new building was designed to look like several smaller structures to avoid overwhelming the street with its size. The new building uses historical features found on surrounding buildings, such as horizontal siding, double-hung windows, false fronts and traditional storefront designs.

15. Blowers & Kineth Store (1886) Coupeville Cash Store

12 N. W. Front Street

This was once the largest general store in Coupeville, selling everything from groceries and dry goods to mowing machines. A wagon shop and blacksmith occupied the lower level. It remained a grocery store for more than sixty years, and was then a pharmacy until 1959, when it became an antique store.

16. John Robertson's Store (1866) ♦

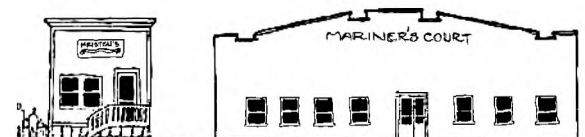
10 N. W. Front Street

John Robertson was one of Coupeville's first entrepreneurs, owning six buildings in this block. He purchased a portion of the John Alexander claim in 1860. This is one of the earliest buildings on the street, built in 1866. It originally had a simple gable roof, with the false front added later. An adjacent wharf was built in 1883.

17. Tom Howell's Barber Shop (1936)

13 N. W. Front Street

This is an example of a building built to look like its much older neighbors. It was a barber shop and then a beauty shop until 1968.



18. Whidbey Mercantile Company (c. 1875) ♦
Whidbey Cash and Carry

8 N. W. Front Street

It was common at one time for stores to have customer accounts and to deliver purchases. Here, savings could be had for "cash and carry." This is another structure built for John Robertson, with a false front added later. On the rear is a large door on the second floor, where boats could unload directly into the store at high tide; there was a scale on the sidewalk in front to weigh goods being shipped. About 1930, a lean-to on the west end was enclosed and used as a gas station, with gasoline pumps right at the sidewalk. The eastern section remained a store. It has been a tavern since 1938.

19. Wooden Sidewalk and Deck

Coupeville was incorporated as a town in 1910, with 321 people. This spot marks the location of the first town offices and library, which were demolished in 1959 after becoming very unsafe. Coupeville's early sidewalks were made of wood like this one. They extended along much of Front Street, through some residential areas and out Main Street as far as the church at the top of the hill. The walkways kept people out of the mud, but they were very slippery and caused endless maintenance problems. Concrete sidewalks replaced them in the 1950s.

20. John Robertson House (1864) ♦

5 N. W. Front Street

The oldest building on Front Street, this dates from 1864. It was said to have been built as a grist mill, to grind wheat into flour. However, it is not known that it was ever used as a mill. In 1864-65, the building served as the county courthouse for a few months, accommodating court hearings and commissioner meetings. It was a residence for many years and still has a distinctly residential



appearance compared to the surrounding structures. The porch was added in the late 19th century and the dormers in the 1990s.

21. Glenwood Hotel (1890)

1 N. W. Front Street

This elegant Italianate structure with tall bays and a balcony was probably the grandest building on Front Street, featured prominently in early photos. The hotel was particularly noted for its fine public baths. The top floor was a hotel until the 1940s, when it was converted to apartments. It was owned by the Calhoun family for 75 years, with their residence above and various shops and offices on the ground floor. The mansard roof was added about 1900.

22. Sedge Building (1871) ♦

4 N. W. Front Street

This building was also constructed for John Robertson. Its east side is exactly on the line between the Coupe and Alexander land claims.

One of the early owners of this store was an undertaker, who reportedly found the town to be so healthy that there was little call for his services and he opened a home furnishings store. The small addition to the east housed the town's first telephone exchange from 1900 until 1930.

At one time, a Chinese laundry occupied the lower level. Central Whidbey had a number of Chinese residents, who had come through the immigration station at Port Townsend. Some were tenant farmers renting land on the prairies, while others worked for local farmers. Although often treated like unwelcome outsiders, they made a significant contribution to the island's early economic development.

23. Puget Race Drugstore (1890)

2 N. W. Front Street

Puget Race was a long-time druggist in Coupeville. At one time this was one of only two drugstores between Seattle and Bellingham.

24. Granville Haller House (1866) ♦

1 N. E. Front Street



Major Granville Haller came to the Washington Territory in 1853 to protect American settlers from Indians and Englishmen. After the Civil War he returned as a civilian to build his imposing home and to run a successful general store on the site. He built his own wharf across Front Street. Ten years after the Hallers left the island, the store, located right at the road's edge, was cut in half when the county widened Main Street. After this stunt forced the shopkeeper into bankruptcy, the site housed the town's first movie theater called The Circuit. The projection booth extended out over the sidewalk. Reportedly, the electrical system was so weak that lights all over town dimmed while the movie was showing.

25. Samsel/Zylstra Law Office (1904)

6 N. E. Front Street

This building was originally a law office, half of its present size and with a false front like others on the street. The west half, a doctor's office, was added later, significantly changing the roofline.

26. Island County Bank (1892)

5 N. E. Front Street

Coupeville got its own bank in 1892, a great achievement for the little town. However, it was short-lived. The bank closed in 1893, after the cashier absconded with the funds, spending them in the "most disreputable dives of Seattle." It was not until 1903 that another bank opened. Since 1933 the building has been a medical office and a residence. The main entry was moved to the east side.

27. Methodist Parsonage (1889) ♥

5 N. E. 9th Street

This house served as the parsonage for the Methodist pastor from 1889 until 1955. Its appearance is much the same as it was originally, except for an addition on the south side and the wraparound porch. Note the decorative detailing on the porch and below the eaves.

28. Tommy Griffith House (1869) ♦

101 N. E. 9th Street

The rear part of this unusual house was built in 1869, with the front portion later added on as a rental unit, while the owner lived in the rear. The eastern addition is from 1978.

The large lots and gardens seen here are typical of this older section of Coupeville. Many have old fruit trees, remnants of the orchards that were once a significant feature of Coupeville.

Note that this is 9th Street, not First Street which might seem more logical. When the new state highway was built in the 1960s the town reversed the street numbers. The courthouse and other major buildings were built to face the main roads and the water, but from the highway they are now approached from the rear.

29. First Methodist Parsonage (1880)

104 N. E. 9th Street

From 1880 until 1885, this house was the residence of the Methodist pastor near their first church in Prairie Center. In 1912, it was purchased by the school district, which used it to house teachers for many years. It was moved here from Prairie Center in the 1950s.

30. Captain Thomas Kinney House (1871) ♦

207 N. E. Front Street

Captain Kinney was one of several sea captains who settled in Coupeville in the 19th century. The small gabled section in front is the original 1871 portion. The three other gable roof sections were separate buildings that were joined to the house later. The picket fence was very typical of early Coupeville, where dogs and pigs often wandered the streets.

31. Captain Joseph Clapp House (1886) ♥

307 N. E. Front Street

Captain Clapp was a Massachusetts sea captain, who married Mary (Mollie) Cranney, the daughter of an island pioneer. He then retired from the sea and held several public offices. He lived in this house for more than fifty years, dying in 1940 at the age of 97, the last of the original sea captains who settled here. This Queen Anne-style house has an elegantly ornamented porch and bay windows; an addition was built in the 1920s. The bay window on the east side came from a house in Prairie Center that was demolished.

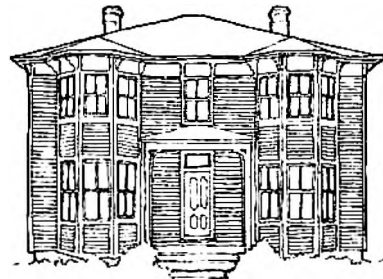
32. Captain Thomas and Maria Coupe House and Barn (1854) ♦

504 N. E. 9th Street

This is the town's oldest house still on the original site, built for Thomas Coupe shortly after he brought his wife Maria and their children here in 1854. It was constructed of redwood brought from San Francisco. The house was rehabilitated in the 1990s. As the bluff eroded over the years, the eastern portion of Front Street disappeared, causing the house to be moved back twice.

33. John Gould House (1894)

501 N. E. 9th Street



This elegant house was built by a local farmer and carpenter. He moved into Coupeville after his wife Sallie (a member of the Snohomish tribe) died, so that his grandson could attend the Puget Sound Academy. The Italianate house has a pair of notable two-story window bays and decorative brackets on the porch and eaves. There is an addition on the south side. The house was once very run down, but was rehabilitated in the 1990s.

34. Coupeville Courier Printing Office (c.1905)

905 N. E. Kinney Street

This farm building was used as the printing office of a local newspaper, the Coupeville Courier, in the 1950s. It has since been used for storage, and was once a cow shed.

35. Hesselgrave Rental House (1890)

205 N. E. 9th Street

This has been a rental house for most of its existence. It was probably built by Captain Kinney, and was purchased as a rental property in 1919. It has had few changes over the years. Note the decorative panel over the front entry.

36. Jacob and Mary Anne Straub House (1890)

202 N. E. 9th Street

This simple house was built by the local blacksmith, Jacob Straub, who had a wagon shop on Front Street. He also built several other Coupeville buildings. The house has been extensively remodeled but it still has its large lot with many trees.

37. Albert and Lizzie Kineth House (1886)

703 N. E. Center Street

This simple farmhouse was built for a partner in the Blowers and Kineth store on Front Street. It is particularly notable for its large garden and trees. The porch has been enclosed.

38. Courthouse Vault (1891) ♥

202-204 N. E. 6th Street

(visible behind the house at 7th and Haller)

The first Island County Courthouse was in Coveland, just west of Coupeville. In 1881, the courthouse moved into rented space in Coupeville. However, it was not until 1891 that a courthouse was built, by Howard B. Lovejoy, on the hill at 6th and Haller streets. Although it was some blocks from Front Street, it was a prominent feature when seen from the water. This concrete vault, clad in wood siding, is the only remnant of that building. After the population growth of World War II, the courthouse was considered too small; it was demolished in 1950.

39. Todd/Parker House (1886) ♥

105 N. E. 7th Street

This house, and the one next door, were built by the Lovejoys, probably Coupeville's most prominent family. Their contrast with the simple vernacular houses nearby is striking. Howard B. Lovejoy had a sawmill at the foot of Otis Street and built many of the town's finest houses and public buildings, including the 1891 Courthouse and the Methodist Church. He also established the Island Transportation Company, which became a major factor in passenger and freight shipping throughout Puget Sound; it merged with Puget Sound Freight and Ferry Lines in 1927. Lovejoy built this turreted Queen Anne-style house for his mother-in-law, although she never lived in it. Shirley Parker, for whom Parker Road is named, lived here with his family for fifty years.

40. James Zylstra House (c. 1889) ♥

101 N. E. 7th Street

Howard B. Lovejoy built this house for his own use. It is one of only two local houses in the French Second Empire style, with a mansard roof. It also has an ornate bay window and porch detailing. From 1919 until 1954, James Zylstra and his family lived here. Zylstra was a prominent lawyer who had a long career of public service, serving as mayor, state representative, and member of school board and court commission.

41. Town Hall (1900)

4 N. E. 7th Street

When the earlier town offices on the waterfront had to be demolished, the town acquired this building, a caretaker's residence from the Fort Casey water system, and moved it here in 1957. It has been expanded twice, and served as both town hall and library until the new library was built in 1987. Its entry portico with Tuscan columns is more typical of the military buildings of the late 19th century than of other buildings in Coupeville.

42. Island County Courthouse (1949)

1 N. E. 7th Street

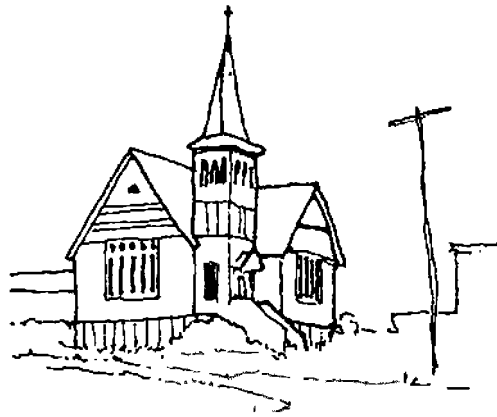
This courthouse, in the Art Moderne style, was built in 1949, two blocks west of the original building. The Courthouse Annex, including a jail, was added at the rear of this building in 1972. A third structure with a new jail was built in 2000, with a skybridge connecting east across Center Street.

43. Main Street

Main Street was the primary entry to town (other than by water) and was part of the state highway up the island for many years. While the commercial center was on Front Street, Main Street had the churches, the major fraternal halls and the most elegant houses. A wooden sidewalk once ran along the street, perhaps as far as the Congregational Church.

44. Congregational Church/St. Mary's Catholic Church (1890) ♥

207 N. Main Street (in distance)



The second church in town was that of the Congregationalists, built at the top of the hill in 1890. However, they merged with the Methodists in 1930, and the church became St. Mary's, the island's first Catholic church.

45. Higgins House

506 N. Main Street

This bungalow was built in 1917 for a doctor. It is a good example of the Craftsman style, with multi-pane windows, a gabled dormer, and wide eaves with extended rafter tails. Except for the enclosure of the porch, few changes have been made.

46. Jacob and Berthe Jenne House (1889) ♥

602 N. Main Street

This house, and the Kineth house a block away, were built by H. B. Lovejoy in an elegant Italianate style, set on the main street where they would be very visible. Note the tall vertical bays and the decorated frieze and carved brackets under the eaves. Jenne owned the Central Hotel, and his house had all the modern conveniences of the day—running water, hot water heat and even closets!

47. Dr. T.H. White's Office (1905)

602 N. Main Street behind on 6th

After Jacob Jenne's death, his widow Berthe married a dentist, Dr. T. H. White. This building was his office, which he moved here from Front Street about 1910. This accounts for the presence of a distinctly commercial false front structure in a residential area.

48. Dr. Joshua and Ann Crockett Highwarden House (1888) ♥

604 N. Main Street

Dr. Highwarden was a physician and druggist, who married Ann Crockett, the widow of a Whidbey Island pioneer. He planned to build a sanatorium on Main Street, but he ran out of funds before it was completed. That building, near the Masonic Hall, later became the Puget Sound Academy, which burned down in 1896. This is basically a simple farmhouse, but with fancy shingles and other Queen Anne-style details on the porch and window bays.

49. Carl Gillespie House (1903)

606 N. Main Street

This building was moved here from across the street in the 1970s when the Courthouse annex was constructed. Carl Gillespie, the original owner, was a partner with his brother in the livery stable near the Town Wharf.

50. United Methodist Church (1894) ♥

608 N. Main Street

The Methodists were originally the major congregation in the area. They built their first church in Prairie Center. Their second church, built on this site in 1885, burned down. H. B. Lovejoy built this gothic-influenced structure in 1894. Several additions have been made since 1908, but the east facade has its original appearance.

51. John and Jane Kineth House (1887) ♥

702 N. Main Street



This is another Italianate house built by Howard Lovejoy. The Kineths had a farm on their land claim nearby, but built this town house for their retirement. John was the brother of Albert Kineth, the Front Street merchant.

52. James and Katurah Coupe Gillespie House (1891)

704 N. Main Street

This house was originally located across the street, but was moved to 9th and Kinney streets when the Courthouse Annex was built in 1972; it was later moved to this location. James Gillespie owned the meat market near the Town Wharf, and was married to Katurah Coupe, the daughter of Thomas and Maria Coupe.

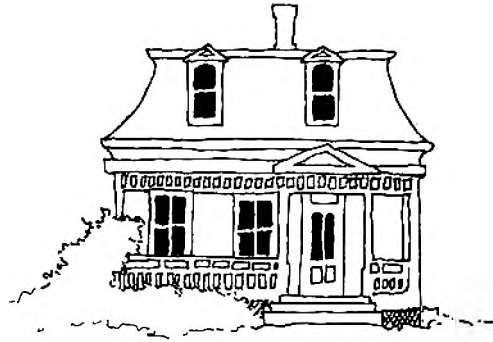
53. Alvah and Mary Blowers House (1874) ♦

710 N. Main Street

Alvah Blowers was involved in most of the early Coupeville enterprises. He and his partner Albert Kineth operated the Blowers & Kineth store. He was also county treasurer, an active Mason, president of the bank and half-owner of the newspaper, as well as a developer of property throughout the island and elsewhere in the Northwest. This building has been used as a doctor's office, but the front is not much changed. It has a particularly large lot with fruit trees.

54. Ernest and Nellie Lovejoy Watson House (1886) ♥

5 N. W. 8th Street



This is the second local house in the French Second Empire style. Like the Zylstra House on 7th Street, it was built by H. B. Lovejoy. Ernest Watson married Lovejoy's sister Nellie, and served as county treasurer and assessor. Some of the decorative features were added later, taken from houses demolished in Prairie Center. The addition in the same style was built in 1970 and the garage was added in the 1980s.

55. Headquarters Saloon/Leach House (1883)

801 N. Main Street

John Leach, who built this house in 1883, also ran a saloon out of the house for a few years until Coupeville went dry in 1886. Leach married Howard Lovejoy's widowed mother, Calista, and the house remained in the family for more than one hundred years.

The enactment of the temperance law showed the influence of the Women's Christian Temperance Union. They were first organized here in 1883, and in 1890 H. B. Lovejoy completed construction of their own hall near the current town hall. This was a major social and educational center, hosting innumerable educational lectures and presentations and housing the library for many years. The WCTU pursued many interests other than temperance, including women's economic rights and suffrage, child care and child labor laws. In 1886 they petitioned for a county election and a ban on liquor was passed by the voters. License fees were refunded and taverns closed. However, in 1887 women's suffrage was declared unconstitutional and the taverns reopened.

56. Masonic Lodge # 15 (1874) ♦

804 N. Main Street

Fraternal organizations were very important in Coupeville's early days. Without easy transportation or electronic entertainment, people of all ages participated in their social and educational events. The Masons were organized in 1869 at the Good Templars Hall on Front Street, before erecting this building in 1874. The Doric columns came from an Oak Harbor bank. Compatible additions have been made on the south and west sides. Most of the prominent early citizens were active Masons, and the lodge is still active today.

Another active fraternal organization in early Coupeville was the Oddfellows, whose prominent lodge hall was at 4th and Main streets. It was used for many dances and even as a skating rink.

57. Puget Sound Academy Site/Judge Lester Still House (1914)

808 N. Main Street

Here stood the private Puget Sound Academy – the only high school in town until 1901. Coupeville's public schools were always more centrally located near Prairie Center, since many children lived on the prairies or at Fort Casey.

Established by the Congregational Church in 1886, the Puget Sound Academy had as many as 90 students, coming from as far away as the Canadian border for a high-quality classical

education. The academy was the largest building in town, with several classrooms, dormitories, science laboratories and a library. However, the building burned in 1896 and the academy moved briefly to the top of the hill next to the Congregational Church. The stone foundation still remains visible, beneath the home that Judge Lester Still built in 1914. Later, Flora Engle, a member of a pioneer family and very active in the community, lived here until her death in 1936. This shingled house is one of Coupeville's few examples of the Craftsman style, which is very common in Seattle and most Washington towns.

58. Cook's Corner/Triangle Park

N. E. 9th Street and N. Main Street

This small park has long been open space and was acquired by the town in the 1980s. It is known as Cook's Corner for a Coupeville Garden Club member who did the initial landscaping plan. The park was re-landscaped, with a new fountain, in 2000.

59. Coveland Street

This narrow, curving street was for many years part of the main state highway up the island to Oak Harbor. The state route ran up the island on Terry Road to Prairie Center, then on Main Street to Coveland, and along Madrona Way to Oak Harbor. Madrona Way and Race Street were realigned in 1939 for safety but it was still very circuitous. The main highway that now runs across the historic farmland of Ebey's Prairie between Coupeville and Prairie Center was completed in 1967.

60. Telephone Exchange Building (1930)

902 N. Main Street

When the telephone switchboard outgrew its original home on Front Street, this stuccoed building became the telephone exchange until the early 1970s, when a new switching center was built near the hospital. It was the historical museum until 1970, and has been in private use since then.

61. Horace Holbrook House (1895)

805 N.W. Alexander Street

Horace Holbrook was born in Coveland in 1863, the son of one of the town's first Massachusetts sea captains. A local carpenter and shipbuilder he built this house in 1895. Additions were made to the structure over the next few years with a second floor added over the kitchen area. Few changes have been made to the structure with the exception of modernization of the interior.

62. Charles Cushen House (c. 1916)

15 N. W. Coveland Street



This is another example of a Craftsman bungalow, with a wide gabled roof and eaves and exposed rafter ends. It was built for the owner of the Ford dealership on Front Street, Charlie Cushen. He also owned the town's first electrical plant, located across the street where the Recreation Hall is today.

62. Pontiac Dealership (1930)

105 N. W. Coveland Street

This garage was the original Pontiac dealership for the island. It has a stepped false front, with touches of the Art Moderne variation of the Art Deco style, which was popular in the 1930s.

64. Recreation Hall (c. 1935)

N. W. Coveland and N. W. Alexander

This small structure has a unique history among Coupeville buildings. It was built in Central Washington as a dormitory for the Grand Coulee

Dam construction project. The town purchased it in 1941, when dam construction ended, but it was not moved here until the end of the war. It is said that it was finally relocated at the personal request of Mrs. Roosevelt, who was contacted by local residents on one of her frequent visits to her daughter in Seattle. The hall was remodeled in 1984 and is still heavily used for community meetings, dances and other activities.

65. Old Fire Hall/Museum (1937)

903 N. W. Alexander Street

This building is another example of changing uses of buildings over time. It was first built in 1937 as a fire hall, which it remained until a new one was built in 1968. The historical museum then moved here in 1970 from the telephone exchange building, staying until the new museum was completed in 1989. The structure now serves as the Coupeville Chamber of Commerce.

End of tour.

We hope you enjoyed it!