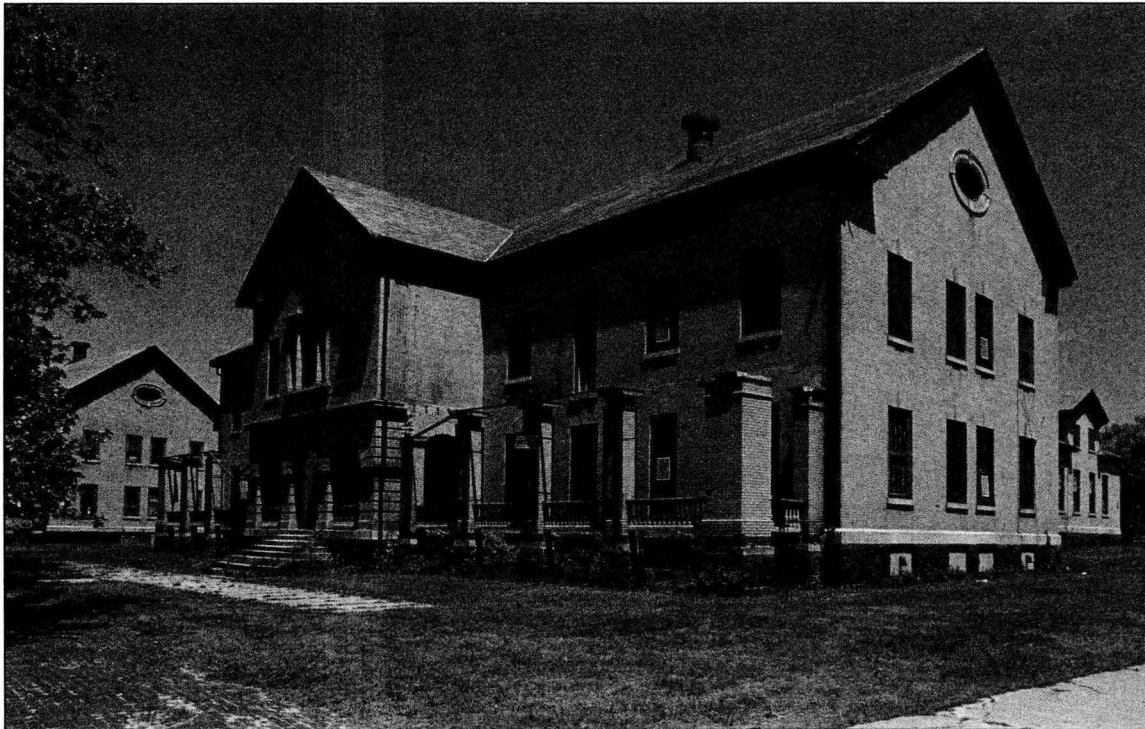


## BARRACKS BUILDING No. 24

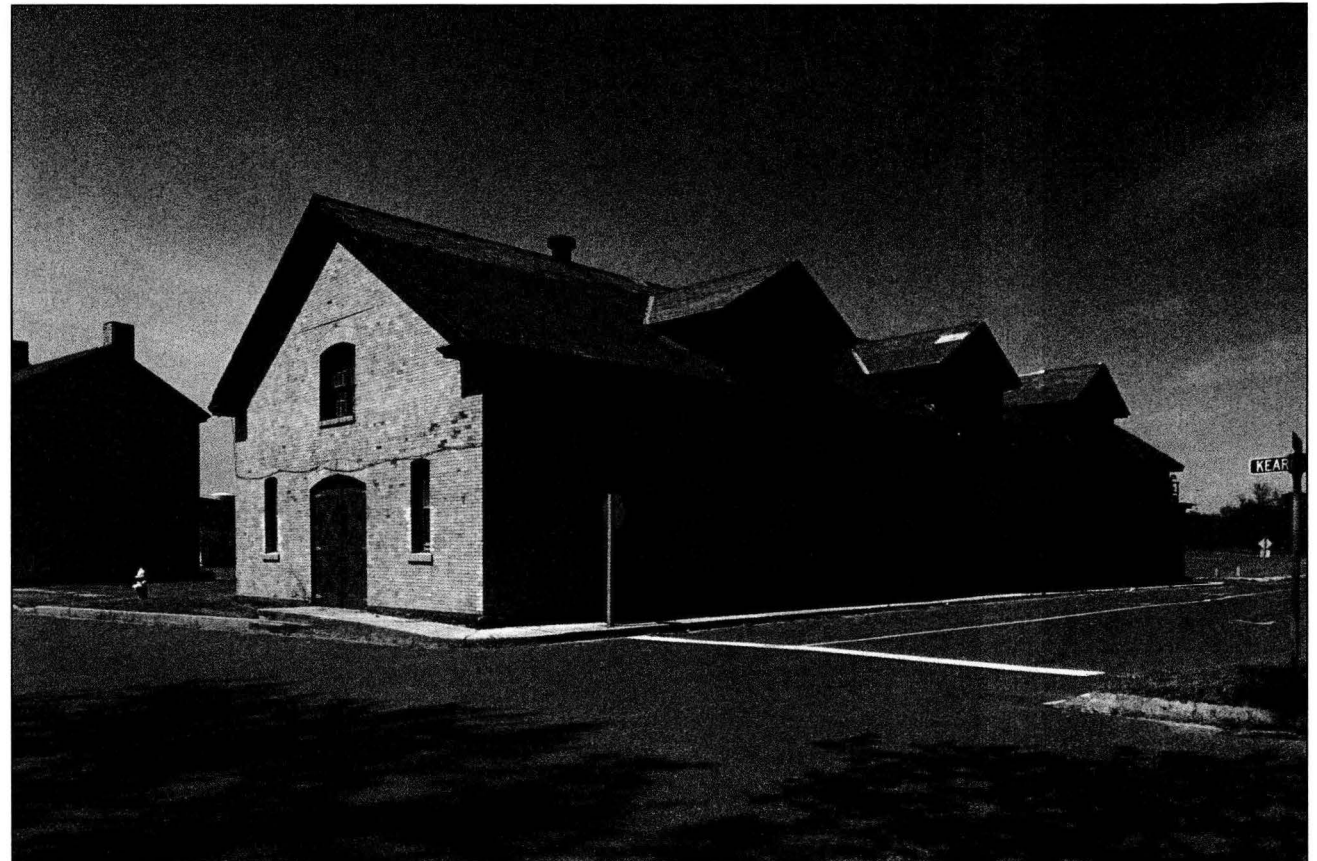
This massive buff-brick two-story structure overlooks the parade grounds, Officers Row, and Sandy Hook Bay. With over 17,000 square feet of space, the interiors are predominantly open areas with high ceilings, making them ideal for a variety of uses.



## STABLES (MULE BARN)

### BUILDING NO. 36

The 7,600 square foot Mule Barn, a two-story buff brick structure located near the post theater and chapel at the north end of Fort Hancock, could be utilized as a stable facility, or modified for other purposes. Its large double-door openings, combined with open interior space and high ceilings, lend themselves to a variety of potential uses.



## POST CHAPEL BUILDING NO. 35

The Post Chapel is a truly unique building at the Fort Hancock. This 3,300 square foot wooden structure is in relatively sound shape, and strategically located right on the shoreline of Sandy Hook Bay. The site presently serves as the ferry dock for service from Manhattan, and could be ideally suited to a marina for transient use, as well as a yacht club.



## GYMNASIUM AND SERVICE CLUB

### BUILDING No. 40

The Gymnasium and attached Service Club encompass a total of 18,900 square feet of space, and would seem to be ideally suited as a recreational servicing hub for the other facilities at Fort Hancock. Aside from a full court basketball gym with running track, the attached building has several rooms in a variety of sizes that would adapt to exercise and weight rooms, saunas, and meeting facilities.



## POST EXCHANGE BUILDING No. 70

This 8,700 square foot structure, the original Fort Hancock gymnasium, is located directly adjacent to the historic Sandy Hook Lighthouse. It contains one large room with supporting storage areas that could be adaptable to a variety of purposes. In addition, there is a bowling alley in the basement area. There is ample parking located around the building, with utility services accessible. Its central location within the fort area is one more attractive feature for an organization interested in providing a public use.





## HEADQUARTERS BUILDING

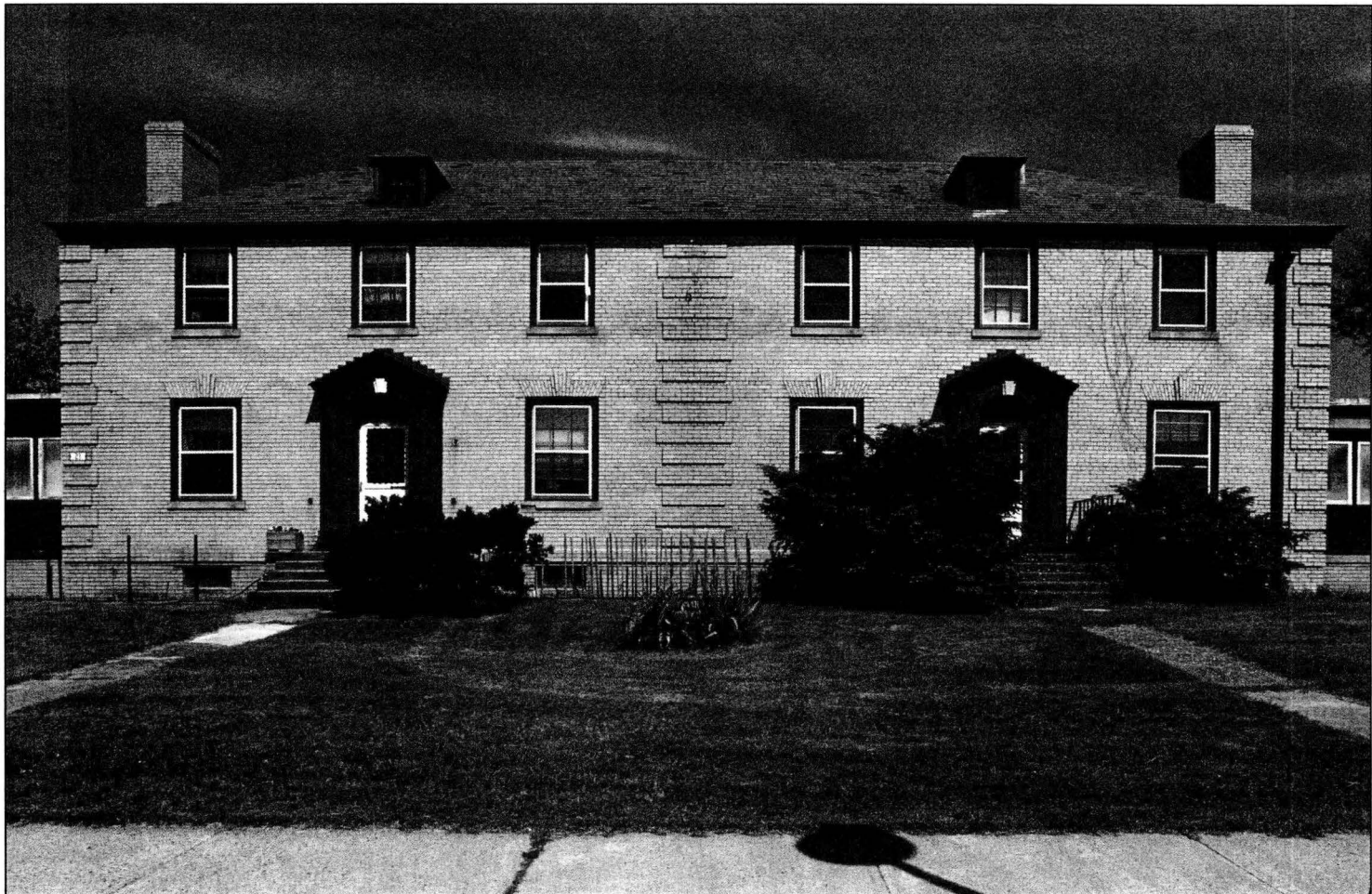
### BUILDING NO. 26

Building No. 26 is a two-story, 5,400 square foot, buff-brick structure on the north end of the main parade grounds, adjacent to Officers Row. At the center of the Fort Hancock, it presently serves as park headquarters. This building is in good condition, having been rehabilitated to serve the administrative functions of the National Park Service's Sandy Hook Unit. In addition to its prime location, it contains ample meeting and office space.



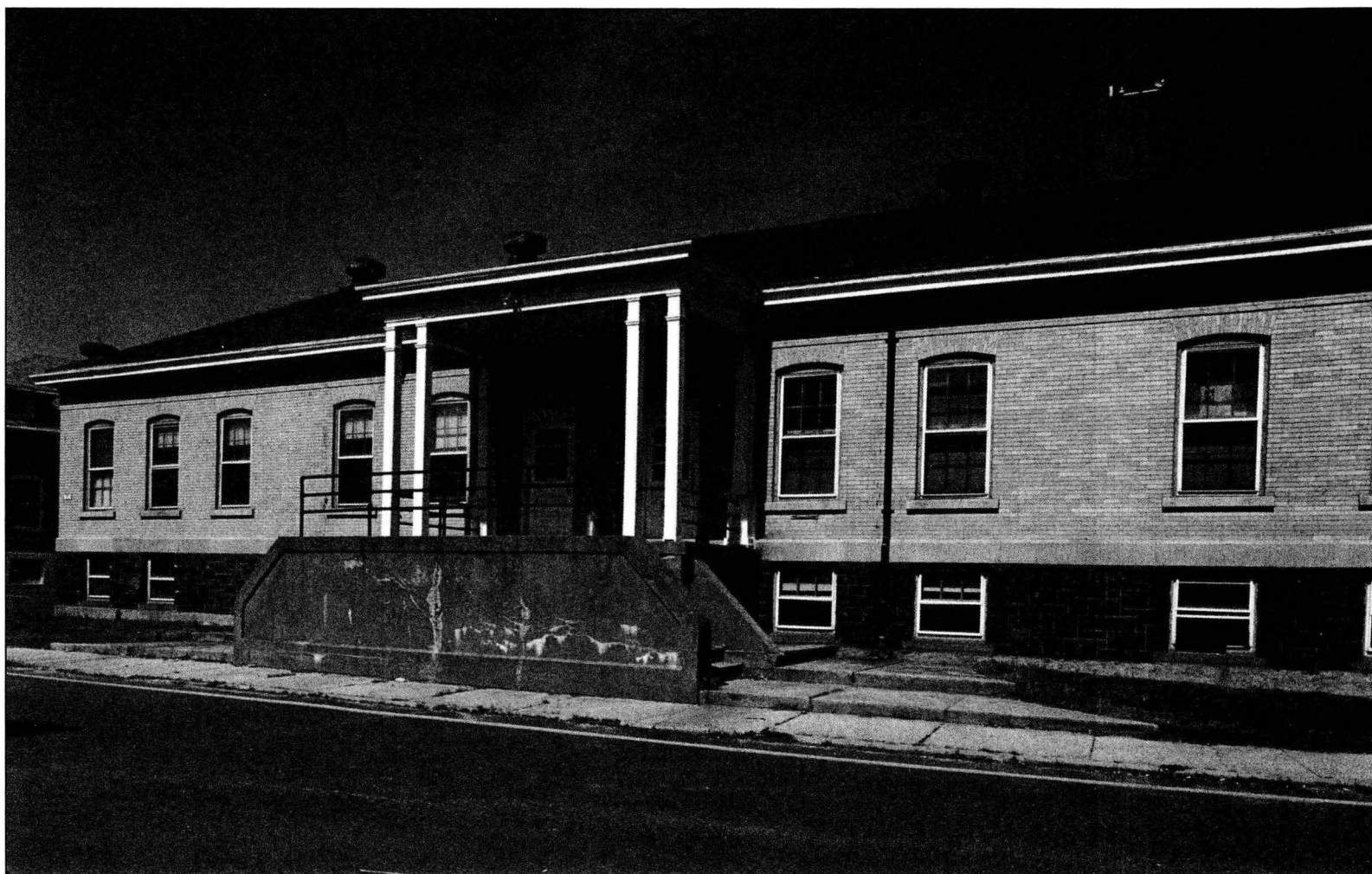
## TWO FAMILY OFFICERS QUARTERS BUILDING No. 21

This 5,715 square foot structure, constructed in 1939, is an anomaly to the Officers Row, in as that it is not only stylistically unrelated but a duplex residence as well. Unlike the other houses on Officers Row, this one is heated.



## POST CANTEEN BUILDING No. 53

This 6,180 square foot building presently serves as the home of Brookdale Community College, with one floor, a basement and an attic. It is located directly behind the YMCA/Gymnasium.

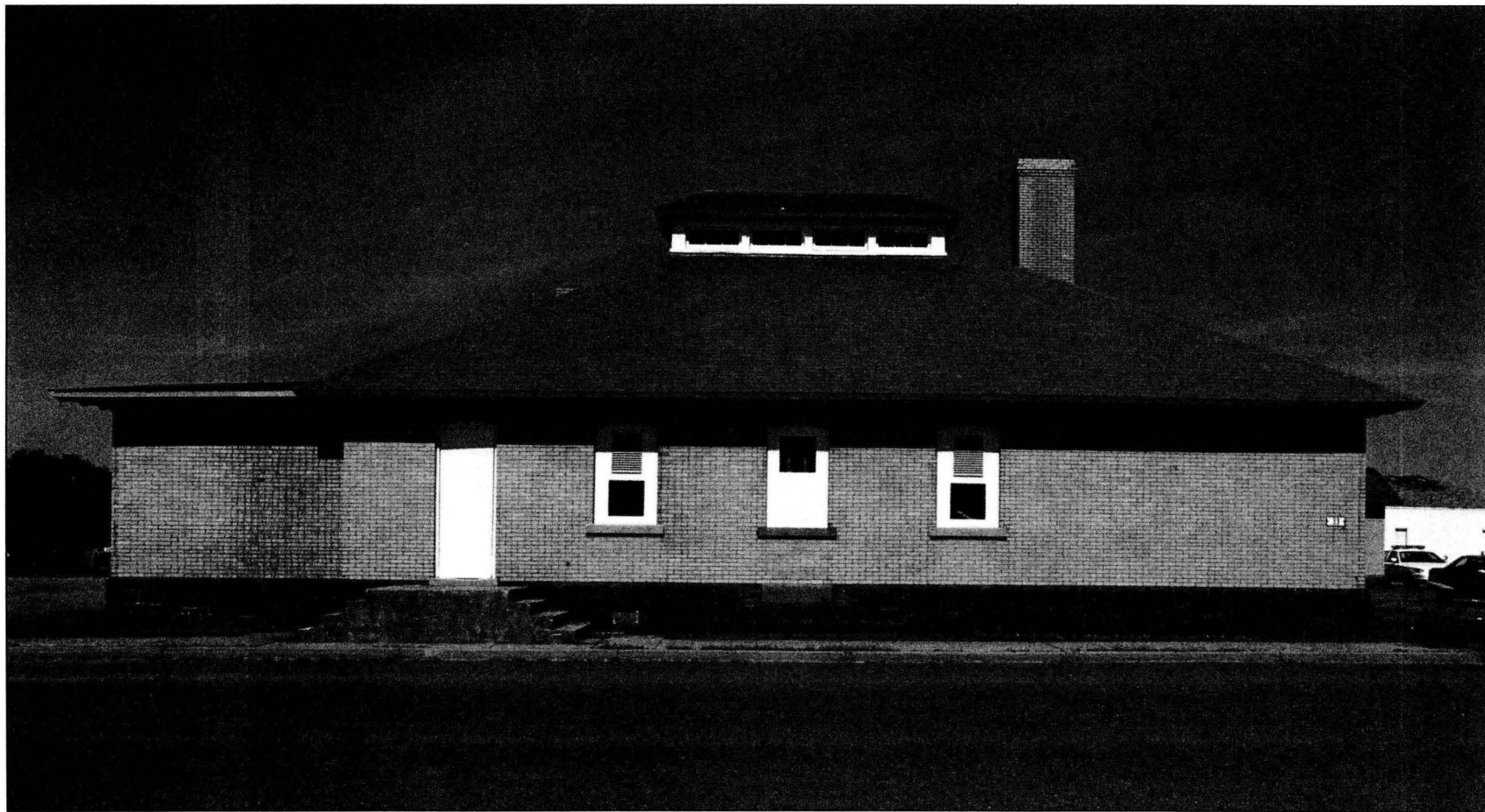




## **BAKERY**

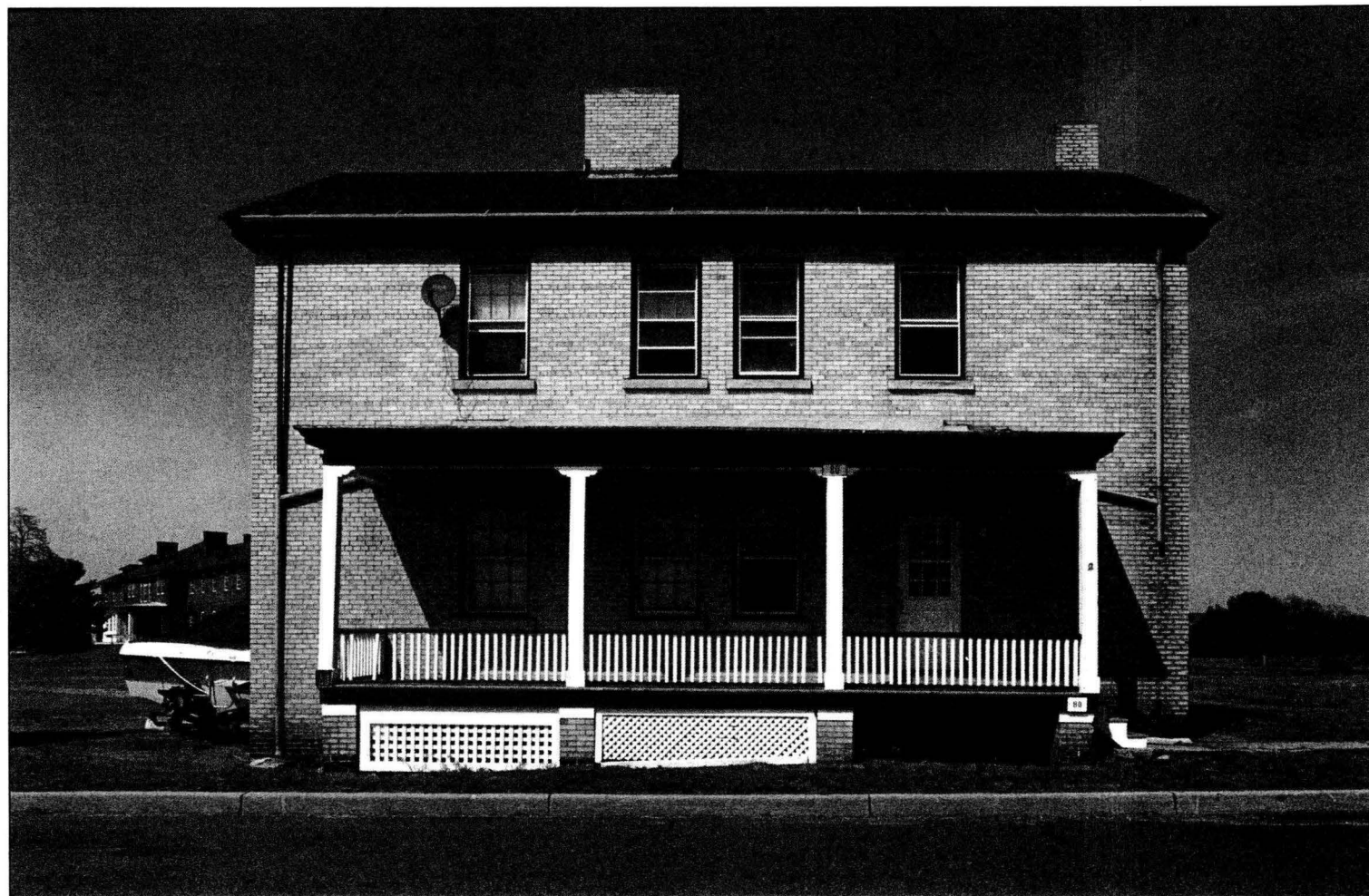
### **BUILDING NO. 33**

This 2,740 square foot structure contains one large room and two smaller offices. It is one floor, and would be useful as an ancillary building to the Post Theater.



## NCO QUARTERS BUILDING No. 80

This 2,342 square foot two-story residence contains two bedrooms and two bathrooms, along with a kitchen and living area. It is conveniently located near the stable/mule barn, the theater, the chapel, and the ferry landing.



## POWER PLANT WAREHOUSE BUILDING NO. 124

A 3,845 square foot structure, this buildings' opening spaces would allow for almost any use, as it would be easily adaptable. There is a large warehouse area to the west with two large room areas on the east end.



## MOTOR SHOP WAREHOUSE BUILDING No. 125

This massive 11,694 square foot building, located along side of Building No. 124 at the northern end of the fort, contains wide-open areas that could be adapted to many different uses.

