



# Finding Aid

## Dana Collected Correspondence, 1808-1938 (bulk dates: 1857-1934)

Edition 3 (2022)

Collection Catalog No. LONG 21808



## DOCUMENT INFORMATION AND VERSION HISTORY

<i>Edition</i>	<i>Date of Revision</i>	<i>Author(s)</i>
1.0	July 1999	D.E.W. Godwin, Jonathan Bohan, Michael Florer, Anita Israel, Amy E. Tasker, Northeast Museum Services Center
2.0	Spring 2007	Northeast Museum Services Center (Reformatting)
3.0	June 2022	Kate Hanson Plass, LONG

*Cover Illustration:*

*Elizabeth Ellery "Lily" Dana, Sarah Watson Dana,  
and Angela Henrietta Channing Dana Skinner, c. late 1890s.  
Dana Family Papers, 3004.2/1-#41, Photo Box 1, Env. 25.*

*Courtesy of Longfellow House-Washington's Headquarters National Historic Site.*



## **CONTENTS**

List of Illustrations .....	ii
Preface.....	iii
Copyright and Privacy Restrictions .....	iii
Introduction.....	6
Abbreviations Used in This Document.....	8
Part 1: Collection Description.....	9
Scope and Content Note.....	11
Series Descriptions.....	14
Part 2: Biographical Data.....	15
Sarah Watson Dana (1814-1907).....	15
Elizabeth Ellery Dana (1846-1939) .....	16
Dana and Watson Family Genealogies .....	18
Chart I. Descendants of Francis Dana.....	22
Chart II. Dana Family Genealogy .....	19
Chart III. Watson Family Genealogy .....	20
Chart IV. Marsh Family Genealogy.....	21
Part 3: Collection Listing, Subcollection I. Manuscripts .....	26
Series I. Correspondence -- Chronological .....	27
1840s .....	27
1850s .....	27
1860s .....	29
1870s .....	30
1880s .....	32
1890s .....	35
1900s .....	38
1910s .....	42
1920s .....	45
1930s .....	49
Series II. Correspondence -- Original Bundles .....	51
A. Elizabeth Ellery Dana Correspondence .....	51
B. Sarah Watson Dana Correspondence .....	51
Series III. Correspondence -- Unknown Dates .....	52
Series IV. Ephemera .....	54
A. Natural History Items.....	54
B. Objects.....	56
Part 4: Collection Listing, Subcollection II. Photographs (3003.002).....	65
Photographs Not in Albums (3003.002/001) .....	65
Bibliography .....	78
Appendix: Correspondent Listing.....	79

## ***LIST OF ILLUSTRATIONS***

Cover: Elizabeth Ellery "Lily" Dana, Sarah Watson Dana, and Angela Henrietta Channing Dana Skinner, c. late 1890s. *Photograph from Dana Family Papers, 3004.2/1-#41*

Figure 1: Sarah Watson Dana, ca. late 1890s. *Photograph from Dana Family Papers, 3004.2/1-#403* .....15

Figure 2: Elizabeth Ellery Dana, ca. 1900. *Photograph from Dana Family Papers, 3004.2/1-#263*.....17

## ***PREFACE***

This document, the *Finding Aid for Dana Collected Correspondence, 1808-1938 (bulk dates 1857-1934)*, describes the letters of the extended Dana-Watson family. Previous editions of this finding aid, issued in 1999 and 2007, are obsolete with the release of the current document.

The catalogers in 1999 expressed their gratitude towards staff at Longfellow House-Washington's Headquarters National Historic Site for their assistance in carrying out this work, in particular Site Manager Jim Shea and Museum Specialist Michele Clark.

This document represents many hours of work recording details about the items herein described. The reader should expect a reasonable degree of human error and consequently rely on personal observation of the actual items.



## ***COPYRIGHT AND PRIVACY RESTRICTIONS***

The copyright law of the United States (Title 17, *United States Code*) governs the making of photocopies or other reproductions of copyrighted materials. The Privacy Act of 1974 (5 *United States Code* 552a) governs the use of materials that document private individuals, groups and corporations.

Under certain conditions specified in the law, libraries and archives are authorized to furnish a reproduction if the document does not infringe the privacy rights of an individual, group or corporation. These specified conditions of authorized use include:

- non-commercial and non-profit study, scholarship, research or teaching
- criticism or commentary
- as a NPS preservation or security copy for research use
- as a research copy for deposit in another institution

If the researcher later uses a copy or reproduction for purposes in excess of "fair use," the researcher is personally liable for copyright, privacy, or publicity infringement and agrees to indemnify the NPS from any legal action as a result of the error. Permission to obtain a photographic, xerographic, digital or other copy of a document **doesn't** indicate permission to publish, exhibit, perform, reproduce, sell, distribute or prepare derivative works from the document without permission from the copyright holder and from any private individual, group or corporation shown or otherwise recorded.

Permission to publish, exhibit, perform, reproduce, prepare derivative works from, sell or otherwise distribute the item must be obtained separately in writing from the holder of the original copyright (or if the creator is dead from his/her heirs) as well as from any individual(s), groups or corporations whose name, image, recorded words or private information (e.g. employment information) may be reproduced in the source material. The holder of the original copyright **isn't** necessarily the National Park Service. The National Park Service is not legally liable for copyright, privacy or publicity infringement when materials are wrongfully used after being provided to researchers for "fair use."

This institution reserves the right to refuse to accept a copying order if fulfillment of the order is judged in violation of copyright or federal or state privacy or publicity law. This institution also places restrictions on the use of cameras, photocopiers and scanners in the research room.



## ***INTRODUCTION***

This finding aid describes the Dana Collected Correspondence, 1808-1938 (bulk dates 1857-1934), a compilation of letters associated with the Dana family. The primary force behind the accumulation of this collection was Elizabeth Ellery "Lily" Dana (1846-1939) who was the sister of Richard Henry Dana III (the husband of Edith Longfellow, one of the daughters of Henry Wadsworth Longfellow and Fanny Appleton Longfellow). Miss Dana saved not only her own correspondence but that of other family members, including her father Richard Henry Dana, Jr., (1815-1882), mother Sarah Watson Dana (1814-1907), brother Richard Henry Dana III (1851-1931), grandfather, sisters, cousins, and aunts. The collection also includes newspaper clippings, photographs, natural history specimens, and objects (including textiles) which were sometimes sent along with the letters. Miss Dana organized her collection by bundling groups of letters, often by tying string around them. It is probable that Miss Dana gave this collection to her nephew, Henry Wadsworth Longfellow Dana (1881-1950), or that he acquired it after her death in 1939. Dana, son of Richard Henry Dana III and Edith Longfellow Dana, resided at 105 Brattle Street and acted as the caretaker of his grandparents' home until his death in 1950. The Dana Collected Correspondence collection was accessioned into the Longfellow House-Washington's Headquarters National Historic Site museum collection as part of LONG-1 when the Longfellow House Trust, which was formed in 1913, donated the Longfellow house and its contents to the National Park Service in 1973. A second set of letters came to Longfellow House-Washington's Headquarters National Historic Site in February 1995. A Harvard University curator saw a group of materials at an estate auction and realized that the items were associated to the Longfellow house. The auctioneer gave the items to the curator to return to Longfellow House-Washington's Headquarters National Historic Site. This group of materials, which was comprised of fifty-four books and approximately 3,154 archival papers including letters, postcards, photographs and receipts, became accession LONG-70.

In the 1970s, NPS staff found the bundled letters (those which were part of accession LONG-1) stored in trunks in the basement of the Longfellow House-Washington's Headquarters National Historic Site. The letters were removed from the trunks and cleaned of the layers of coal dust that had settled on them. The collection was rebundled and moved from the basement due to unfavorable climatic conditions.<sup>1</sup>

About fifteen years passed before the next phase of processing. Funding was provided for backlog cataloging in both fiscal years 1996 and 1997. In the winter of 1997, the projects were undertaken concurrently. Jonathan Bohan and Amy Tasker of the Society for the Preservation of New England Antiquities, as part of a cooperative agreement with the National Park Service, worked under the guidance of Diane Godwin and Anita Israel of the Northeast Museum Services Center to complete the processing of the collection. They were aided by Jim Shea, museum manager at Longfellow NHS; Michael Florer, intake curator at Longfellow NHS; and T. Michele Clark, museum specialist at Longfellow NHS.

---

<sup>1</sup>At this time, according to Elizabeth Banks, former employee of Longfellow House-Washington's Headquarters National Historic Site, information was compiled for each letter, including author, recipient, and date. Unfortunately, this list could not be found when preparing to process and catalog the collection during the most recent project.

The catalogers found the letters (which were part of accession LONG-1) stored in nine Record Center cartons. Most had been sorted, although some were not. Those bundles that were sorted were fastened with a rubber band and fronted with an index card on which the year was written with black marker. In addition, some bundles were further organized. From 1869 through 1877, the bundles were sorted into groups labeled "To E.E.D.," "From E.E.D.," "Unidentified Letters," and "Misc. Letters." These designations were added in ink to the index cards or written on a 3x5 inch piece of white paper placed in front of the bundle. From 1924 through the end of the collection, the bundles were sorted by month, and in most cases, by day. This sorting was indicated, month by month, in pencil annotations on the index card at the front of each bundle. This arrangement apparently does not represent the original order. This is evidenced in two ways. First, many letters with wax seal stains on them, indicating that the letters had rested next to envelopes at some point, were not found near envelopes. Second, some letters in the middle of the piles had rubber band remnants adhered to them, indicating that the letters had been on the top or bottom of a bundle at some point in time.

The catalogers rehoused the collection in acid-free folders and archives boxes. Each envelope was surface cleaned and each letter was unfolded and placed, with its envelope (if there was one), in folders labeled and organized by year. Oversize items were removed and placed in oversize boxes. Photographs were removed and placed in seamless open wide envelopes, as were the natural history items. Textiles and other objects were removed and rehoused in chipboard boxes arranged in an oversize box. All removed items were cross-referenced to their original locations by separation sheets. In previous editions of this finding aid, Oversize Materials were listed as a separate series (Series IV). In this edition, they are listed as they are intellectually arranged, and their separation is noted with [oversize].

The catalogers organized the collection chronologically by year only. The years 1924-1938 are ordered by month, and, in most cases, by day. However, once the group of unsorted correspondence was organized it was necessary to add letters to these folders. These additions are designated by the folder title, when needed, and by a labeled acid free insert. Letters found grouped in an original bundle were kept together and placed into a separate series titled "Correspondence -- Original Bundles." Letters with unknown dates were foldered and made into another separate series.

Intake Curator Michael Florer made a preliminary survey of these items, which were accessioned as LONG-70, and created a listing of those items which related to the Dana Collected Correspondence collection. Mr. Florer found that most of the letters and postcards in accession LONG-70 were addressed to or were collected by Elizabeth Ellery Dana. However, as is the case with the rest of the collection, he found many letters that were not written to or from her but which had her endorsement on the envelope. This endorsement was usually on the left edge, in pencil, and identified the author, date, and sometimes the recipient and subject. These endorsements were apparently added some time after the receipt of the correspondence, as some are followed by question marks. These appeared even on Miss Dana's own correspondence, indicating that she was guessing the date or author. Applicable items from accession LONG-70 were removed from the Harvard University envelopes in which they arrived at the house and added to Dana Collected Correspondence collection. These items were filed with the remainder of the collection, but were kept separated by folders labeled "(accession LONG-70)" and placed behind the corresponding year.

The Dana Collected Correspondence, 1808-1938 (bulk dates 1857-1934) (both LONG-1 and LONG-70) was cataloged into the Automated National Catalog System as LONG 21808. A draft of this finding aid was issued in June 1997. Diane Godwin, archivist with the Northeast Museum Services Center, revised the finding aid and distributed it in final in July 1999.

In 2001-2002, the photographs from this collection were cataloged at the item level and rehoused with photographs related to the Dana family.

### ***ABBREVIATIONS USED IN THIS DOCUMENT***

AHCDS Angela Henrietta Channing (Dana) Skinner (1857-1928)

EED Elizabeth Ellery Dana (1846-1939)

HWLD Henry Wadsworth Longfellow Dana (1881-1950)

RCD Ruth Charlotte Dana (1814-1901)

RCDL Ruth Charlotte (Dana) Lyman (1844-1903)

SWD Sarah (Watson) Dana (1814-1907)

***PART 1:***

***COLLECTION DESCRIPTION***



## **SCOPE AND CONTENT NOTE**

*Dana Collected Correspondence, 1808-1938 (bulk dates 1857-1934)*

*Accession numbers:* LONG-1 and LONG-70.

*Catalog number:* LONG 21808.

*Quantity:* 42.92 linear feet (approximately 68,672 items).

*Storage:* 85 letter size archives boxes, 1 legal size archives box, 3 oversize flat boxes, 1 negative envelope box, 1 photograph box, and 1 flat clamshell box.

*Location:* Longfellow House-Washington's Headquarters National Historic Site, 105 Brattle Street, Cambridge, Massachusetts 02138-3407, (617) 876-4491.

*Description:* The collection of Dana Collected Correspondence, 1808-1938 (bulk dates 1857-1934), consists of letters of the extended Dana family collected by Elizabeth Ellery Dana (1846-1939), the sister of Richard Henry Dana III (who was the husband of Edith Longfellow, one of Henry and Fanny Longfellow's daughters). The collection also includes related items such as newspaper clippings, natural history specimens, objects and photographs that were all enclosed with various letters throughout the collection. Most letters are addressed to Elizabeth Ellery Dana; however, also included as recipients are Sarah Watson Dana (1814-1907), Ruth Charlotte Dana (1814-1901) and Richard Henry Dana, Jr. (1815-1882). The main correspondents are Isabella Hazen Dana (1847-1934), Angela Henrietta Channing Dana Skinner (1857-1928), Ruth Charlotte Dana Lyman (1844-1903), Charlotte Dana Lyman (b. 1885), Richard Dana Lyman (1889-1944), and Richard Dana Skinner (1893-1941). Although most of the collection is comprised of correspondence to Elizabeth Ellery Dana, there are some items from her as well. Genealogy was her passion and many letters relate to this subject; however, the bulk of the collection consists of communications between family members.

The collection gives insight into the workings of a family in the nineteenth- and early twentieth-centuries. Letter writing was the most common form of communication among family members or friends living in other parts of the country or even on the other side of town. Married women often moved away from their girlhood homes to live with their husbands. The only way to share their lives on a regular basis, other than visits, was through letters. Although the Dana family had the means to travel and visit their

loved ones (and often did), letter writing encompassed a large part of their lives. Sarah Watson Dana, Elizabeth Ellery Dana's mother, often wrote letters home to her mother and sisters in Wethersfield, Connecticut, and to her sister in Canandaigua, New York. Later, Sarah Watson Dana's daughters wrote letters home. Sarah "Sally" Watson Dana Swayne (1842-1902) lived in New Haven, Connecticut, with her husband Walter; Ruth Charlotte Dana Lyman lived in Winnetka, Illinois, with her husband Francis; Mary "Rosamund" Dana Wild lived in Kittery Point, Maine, with her husband Henry (although there are not many letters from Rosamund in this collection); and Angela Henrietta Channing Dana Skinner lived in Detroit, Michigan, with her husband Henry. All but Sarah Swayne and Elizabeth Dana had children. Letters would often be passed around to different family members so everyone could share in the information. These letters and the family's responses are included in this collection. The subjects of many of the letters center around family life. Even after the use of the telephone was available, Elizabeth Ellery Dana and her correspondents continued to write long and informative letters. Miss Dana was such an active letter writer that it is said that at one time her doctor limited her to just ten letters a day.

Letters from Isabella Hazen Dana (1847-1934), Elizabeth Ellery Dana's cousin, are also included in this collection. Like Elizabeth Dana, Isabella Dana never married, and since they were very near in age, they became close friends. Isabella Dana lived in Newport and Boston, not far from Elizabeth Dana, yet she wrote so often that her letters are too numerous to count.

Many of the envelopes have the stamps cut off. Some of the correspondence refers to stamp collecting, including requests for and offers of stamps, indicating that Elizabeth Ellery Dana was a stamp collector, as were other members of the Dana family.

The collection is organized into two sub-collections: I. Manuscripts, and II. Photographs. The manuscripts are organized into four series: I. Correspondence -- chronological; II. Correspondence -- original bundles; III. Correspondence -- unknown dates; and IV. Ephemera Storage. Sub-collection II. Photographs consists of one series.

A short biographical note for Sarah Watson Dana and Elizabeth Ellery Dana are provided in this finding aid.

*Preferred Citation:*

[Identification of item, series], in the Dana Collected Correspondence, 1808-1938 (LONG 21808), Longfellow House–Washington's Headquarters National Historic Site.

*Related Materials:*

Other correspondence relating to this collection may be found in the personal papers of the family members mentioned in this finding aid, especially those of Elizabeth Ellery Dana. Many of these papers are also located in the archives of Longfellow House-Washington's Headquarters National Historic Site.

*Organization:*

*Dana Collected Correspondence, 1808-1938 (bulk dates 1857-1934)*

3003.001 Manuscripts

I. Correspondence -- Chronological

II. Correspondence -- Original Bundles

A. Elizabeth Ellery Dana Correspondence

B. Sarah Watson Dana Correspondence

III. Correspondence -- Unknown Dates

IV. Ephemera

A. Natural History Items

B. Objects

3003.002 Photographs

3003.002/001 Photographs Not in Albums



## ***SERIES DESCRIPTIONS***

### ***Subcollection I. Manuscripts***

#### *Series I. Correspondence -- Chronological*

The correspondence comprises the bulk of the collection. It consists mainly of personal letters between family members. There are other items one usually finds in a collection of this type, including numerous postal cards and postcards, calling cards, and wedding invitations. Correspondence from businesses is also included. Members of the Dana family enclosed many newspaper clippings within their letters. They also enclosed natural history items, as well as photographs and various objects. These are described below in Series V. Ephemera Storage.

Most of the correspondence is arranged chronologically. Materials which are part of accession LONG-70 are filed where appropriate in the chronological order; however, they are kept in separate folders labeled "(accession LONG-70)" and placed behind the corresponding year.

While most of this series is arranged chronologically by year only, there are two times when this changes:

1. From 1869 to 1877, correspondence is sorted into letters to Elizabeth Ellery Dana, letters from Elizabeth Ellery Dana, miscellaneous letters (meaning letters between other people), and unidentified letters.
2. From 1924 through 1938, the majority of the correspondence is sorted by month and usually day (however, some remains sorted by year only).

It should also be noted that items which arrived as part of accession LONG-70 are not in this differing order, but remain ordered by year only. As the oversize and ephemera items were removed from this series (as well as the other two correspondence series), their sorting order parallels it.

#### *Series II. Correspondence -- Original Bundles*

Letters in this series appear to be in Elizabeth Ellery Dana's original bundles, as several bundles included small scraps of paper with her writing on them. Some of these bundles were found tied together with string or ribbon. These letters are kept separate from the bulk of the correspondence, as they are grouped by correspondent, rather than chronologically.

##### *A. Elizabeth Ellery Dana Correspondence*

This sub-series consists of ten folders, each containing the contents of one bundle of letters, either sent to or sent by Elizabeth Ellery Dana. Eight of these bundles were found in accession LONG-70.

##### *B. Sarah Watson Dana Correspondence*

This sub-series is identical to sub-series A., except that it contains letters to Sarah Watson Dana, Elizabeth Ellery Dana's mother. There are two folders, both from accession LONG-70.

### *Series III. Correspondence -- Unknown Dates*

This series consists of fifty-three folders of unsorted correspondence with no immediately identifiable dates, thus making it impossible to sort into Series I.

### *Series IV. Ephemera*

This series is comprised of items other than letters. Except for newspaper clippings (which remain with the correspondence but placed between sheets of acid-free paper), all such items were removed to separate storage.

#### *A. Natural History Items*

Natural history specimens were removed from the letters that contained them because of the harm they could cause to the collection if left to decay (some discoloration had already occurred). They are housed in open seamless envelopes and sleeved with acid-free paper. Some of these items include flowers picked by Elizabeth Ellery Dana, some red sea moss from a beach in Manchester, Massachusetts, and ivy leaves from Richard Henry Dana Jr.'s grave in Rome, Italy.

#### *B. Objects*

Objects were also removed from the letters due to concern over damage. Many of the objects were textiles which could discolor and stain the letters (in some cases, such damage had already begun). These textiles include an upholstery sample from Henrietta Dana Skinner's home in Detroit sent to her mother, Sarah Watson Dana; fabric samples from tea dresses; and the strings that Elizabeth Ellery Dana used to bundle the letters in this collection. Other objects include hair, bookbinding cloth, and a paint sample (also from Henrietta Dana Skinner's home).

### *Subcollection II. Photographs*

The photographs include carte-de-visites, albumen prints, and cyanotypes. Like ephemera, they were separated from the papers due to concerns about damage. They are mostly portraits of family members (there is a large concentration of Lyman family members), but some are of friends of the Dana family and some of the photographs document travel. Postcards made from photographs are housed here as well.

### *Oversize Items*

These items are grouped together because of their common size. All of the items are intellectually associated with the correspondence in the letter size boxes that house the bulk of the collection. They were removed from the main collection, foldered, and stored in legal and

oversize boxes. These items are mostly letters, but include other documents such as genealogical charts, an advertising poster, and a claim to the Colonial Dames.

In previous editions of this finding aid, Oversize Items were listed as a separate series (Series IV), with two sub-series for Legal Size Storage and Flat Box Storage. In this edition, they are listed as they are intellectually arranged, and their separation is noted with [oversize].

*PART 2:*

*BIOGRAPHICAL DATA*



## **SARAH WATSON DANA (1814-1907)<sup>2</sup>**

Sarah Watson Dana was born in 1814, the fourth of five children of William (1773-1836) and Mary Marsh (1782-1869) Watson. The family resided in Wethersfield, Connecticut. On 25 August 1841, Sarah Watson married Richard Henry Dana, Jr. (1815-1882) of Boston, the author of *Two Years before the Mast*. Mrs. Dana viewed the marriage as "a long-awaited opportunity for independence."<sup>3</sup> After marriage, Mrs. Dana devoted her life to the care of her family. The early years of their marriage were spent as nomads, living in small houses and rooming houses. In 1851, the Danas moved into a new home of their own on Phillips Place (later renamed Berkeley Street) in Cambridge. Their land nearly adjoined the land belonging to the poet Henry Wadsworth Longfellow (1807-1882), with whom they became friendly. The Danas had five children when they moved in, and they would have one more afterward. Their only son, Richard Henry Dana III, married Longfellow's daughter, Edith ("Edith with golden hair" of the poem "The Children's Hour") (1853-1915). R.H. Dana, Jr., died in January 1882. In 1887, Sarah had a new house built at 152 Brattle Street, where she lived out the remainder of her life with her daughter Elizabeth Ellery Dana.

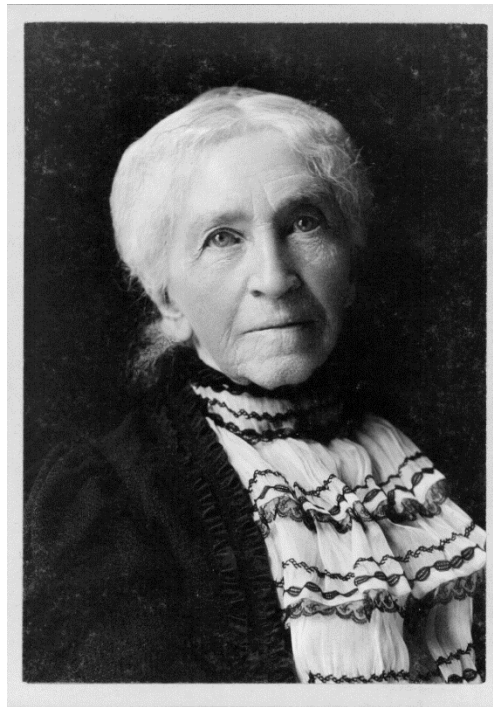


Figure 1: Sarah Watson Dana, ca. late 1890s.  
Photograph from Dana Family Papers, 3004.2/1-#403

---

<sup>2</sup>Information for this biography was derived largely from Robert F. Lucid, ed. *The Journal of Richard Henry Dana, Jr. Volume I*, (Cambridge, MA: Harvard University Press; The Belknap Press, 1968).

<sup>3</sup>*Ibid.*, p. xxxvi.

## ***ELIZABETH ELLERY DANA (1846-1939)***<sup>4</sup>

Elizabeth Ellery "Lily" Dana was born on 3 April 1846, the third child of Richard Henry Dana, Jr. (1815-1882) and Sarah Watson Dana (1814-1907). Elizabeth Ellery Dana was named after her great-grandmother who was the daughter of William Ellery, a signer of the Declaration of Independence. She was educated at Sarah Porter's boarding school in Farmington, Connecticut, and graduated from Cambridge High and Latin School.

When the Civil War began in 1861, Miss Dana was fifteen years old. She and a group of her friends formed a sewing circle to benefit the soldiers. This group, originally known as "Banks Brigade" (Banks was a Union general), soon became known simply as "The Bees" or "The Bee." The group continued to meet throughout their lives as a social circle and charitable group. In many of Miss Dana's letters, references were made to hosting "a Bee" or going to "a Bee."

In 1865, Miss Dana read a brief Dana genealogy published by Benjamin Dana and it sparked her interest in the subject. For the remainder of her life, she devoted herself to compiling a complete and correct genealogy of the Dana family. During her research, she came upon an unpublished diary of a British officer who was stationed in Boston during the Revolution, and, in 1877, she published excerpts from this diary in the *Atlantic Monthly*. In 1924, she published the diary in its entirety. Titled *The British in Boston*, it was printed by Harvard University Press. She also contributed to *A Historic Guide to Cambridge*, issued in 1907, and to the genealogical column of *The Boston Transcript*.

The Dana genealogy, meanwhile, progressed very slowly. Miss Dana always seemed to be on the verge of publishing it, even taking subscriptions in 1930. She wrote her own obituary and mentioned the work, saying that it had been completed and would soon be published. However, it was not finished until 1956, following further work by her nephew and grandnephew, Henry Wadsworth Longfellow Dana (1881-1950) and Henry Longfellow deRham (b. 1905). Titled *The Dana Family in America*, Elizabeth Ellery Dana was credited as the sole author.

Although Lily would spend much time traveling, her primary residence for nearly her entire life was in Cambridge. She lived with and cared for her mother after the death of her father. Following her mother's death, she lived at several locations, usually accompanied by a companion. Most notable among these companions were Miss Wood and Grace Freeman, as she spent several years with each. She saved much of the correspondence sent to her throughout her life and collected many letters sent to her mother, sisters, aunts, grandmother, and other family members. After her death, these papers were retained by Henry Wadsworth Longfellow Dana. Today, this collection makes up a large portion of the archives at the Longfellow House-Washington's Headquarters National Historic Site.

---

<sup>4</sup>Information for this biography was derived from the collection itself, from Elizabeth Ellery Dana's autobiographical obituary (located in the Longfellow House-Washington's Headquarters National Historic Site biographical file), and from informal conversations with NPS staff, especially Anita Israel.

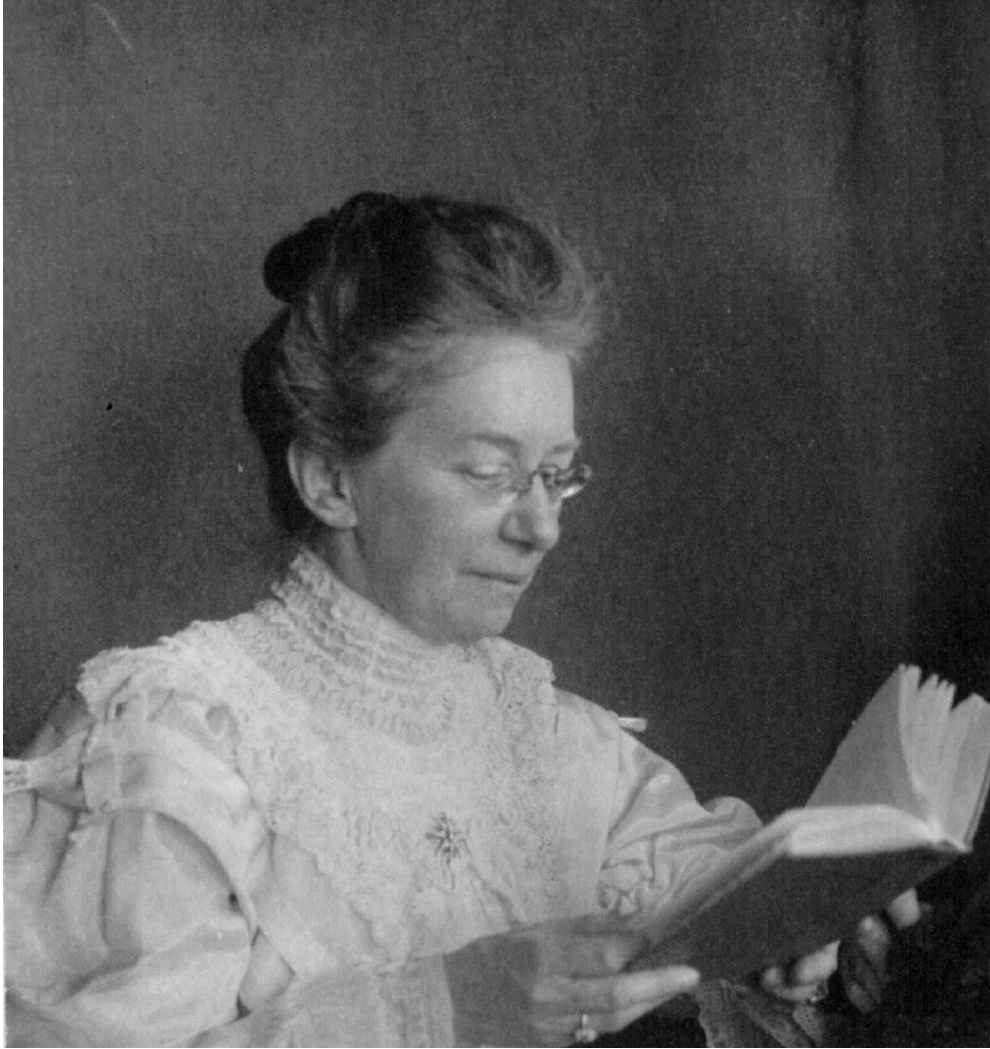


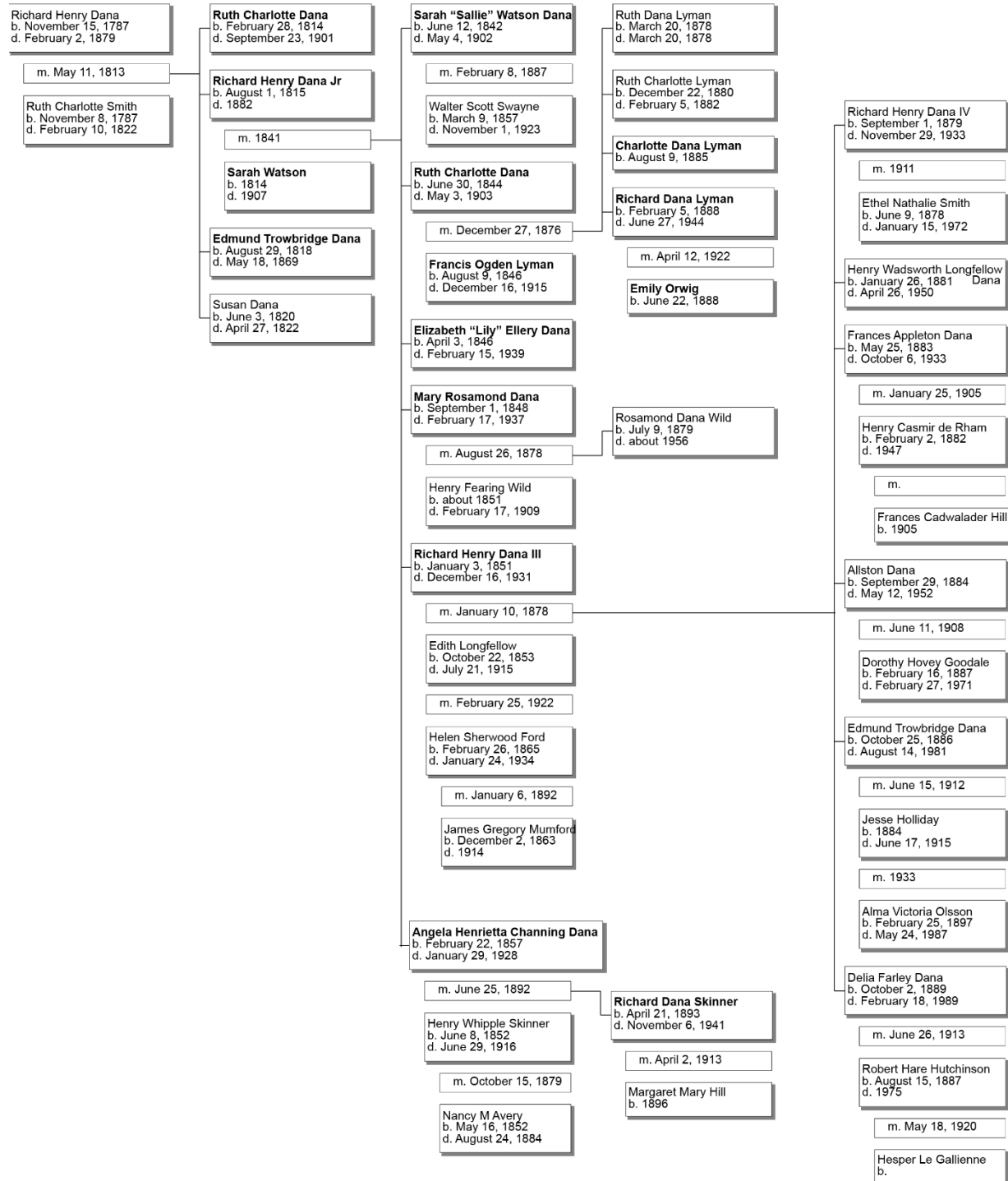
Figure 2: Elizabeth Ellery Dana, ca. 1900.  
*Photograph from Dana Family Papers, 3004.2/1-#263*



## ***DANA AND WATSON FAMILY GENEALOGIES***

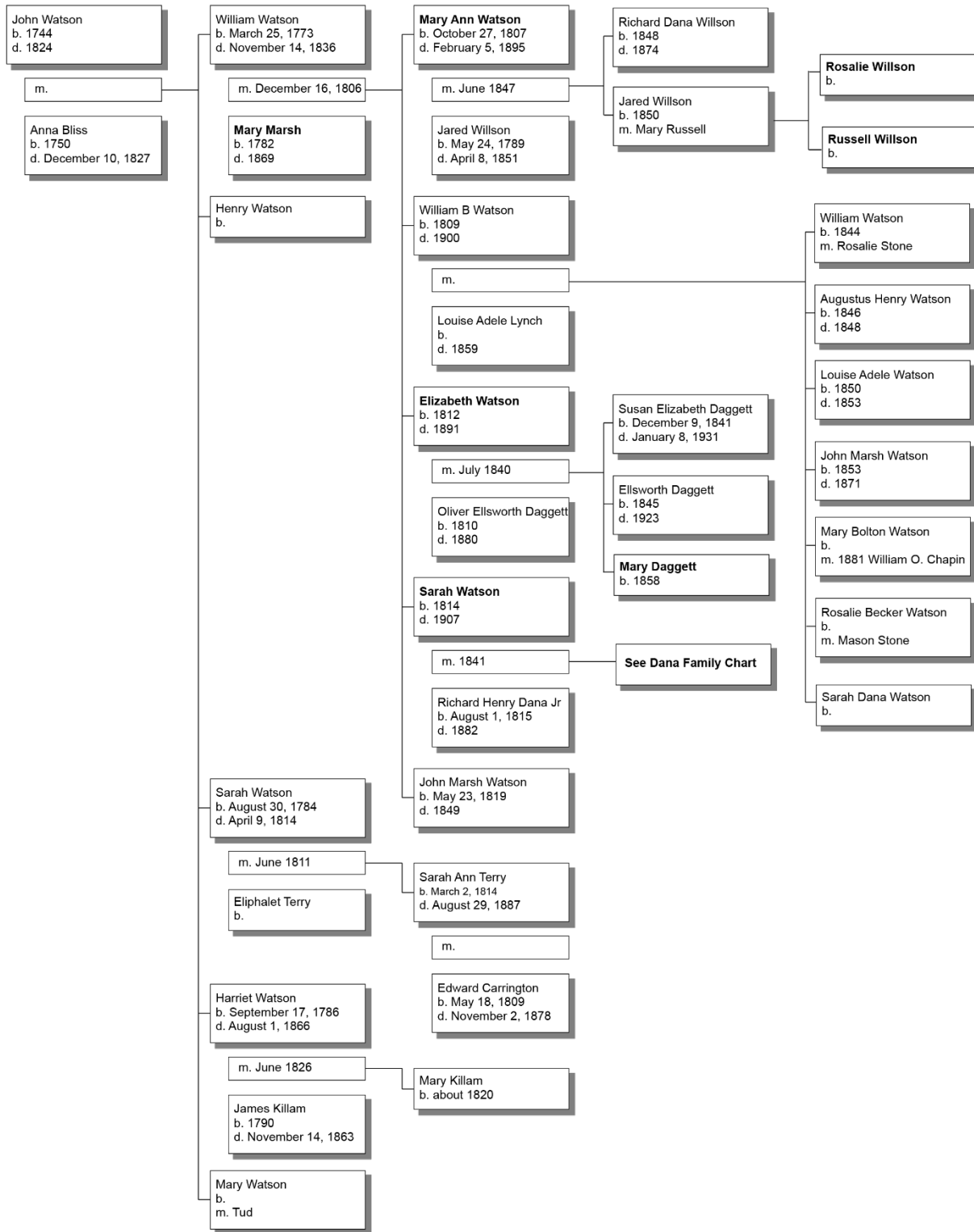
Individuals who appear repeatedly in the collection are marked **in bold**.

**Chart I. Dana Family Genealogy**



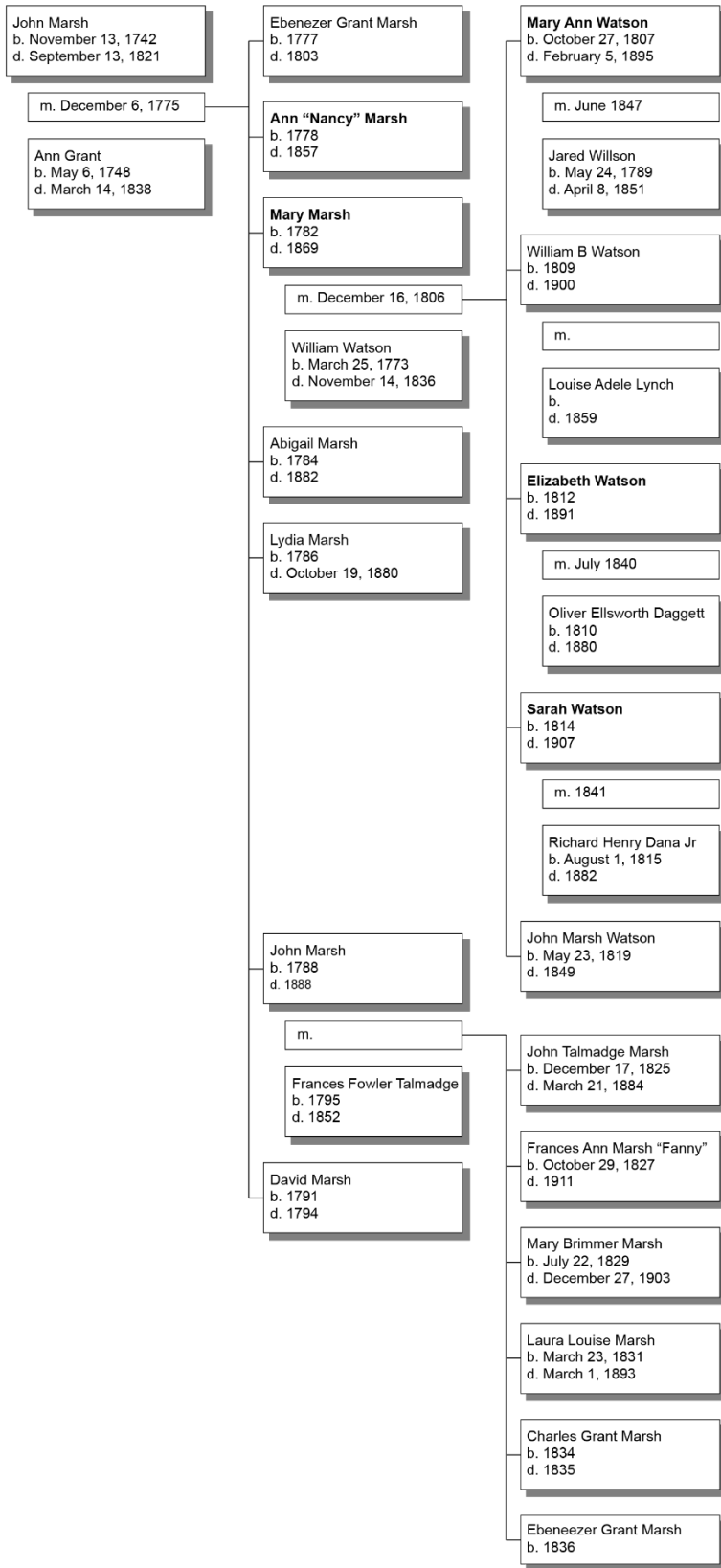
Individuals who appear repeatedly in the collection are marked in bold.

**Chart II. Watson Family Genealogy**



Individuals who appear repeatedly in the collection are marked in bold.

**Chart IV. Marsh Family Genealogy**



Individuals who appear repeatedly in the collection are marked in bold.

**Chart IV. Descendants of Francis Dana and Elizabeth (Ellery) Dana**

Line numbers indicate generations.

1. Francis Dana (b. 13 June 1743 - Charlestown, MA, d. 25 April 1811 - Cambridge, MA)  
sp. Elizabeth Ellery (b. 13 August 1751, d. 30 August 1807), m. 5 August 1773 - Hampton, NH
2. Edmund Trowbridge Dana (b. 1774, d. 1776)
2. Francis Dana Jr (b. 1777, d. 28 December 1853 - Boston, MA)  
sp. Sophia Willard (b. 1775, d. 25 February 1840 - Boston, MA), m. 4 August 1802
3. Sophia Willard Dana (b. 6 July 1803, d. 1861 - NY)  
sp. George Ripley (b. 1802, d. 1880), m. 22 August 1827
3. Mary Elizabeth Dana (b. 6 May 1805, d. 21 March 1886 - Brookline, MA)
3. Francis Dana (b. 2 December 1806, d. 1 July 1872)  
sp. Isabella Hazen White (b. 16 September 1809, d. 8 September 1886), m. 26 June 1832
4. Francis Dana (b. 28 September 1835, d. 11 May 1843)
4. George Hazen Dana (b. 2 September 1837, d. 1917)  
sp. Frances Matson Burke (b. 1847, d. 1929), m. 22 February 1865
5. Francis Dana (b. 1866, d. 1934)  
sp. Ethel Whipple Jones (d. after 1937)
6. Francis Hazen Dana (b. about 1915)
4. William Ellery Dana (b. 27 April 1839, d. 7 June 1846)
4. **Isabella Hazen Dana** (b. 1847, d. 1934)
3. Joseph Willard Dana (b. 17 September 1808, d. 5 December 1830 - Donaldsonville, LA)
2. Edmund Trowbridge Dana (b. 1779, d. 6 May 1859 - Cambridge, MA)
2. Martha Remington Dana (b. 1784, d. 24 December 1862 - Boston, MA)  
sp. Washington Allston (b. 5 November 1779 - SC, d. 9 July 1843 - Cambridgeport, MA), m. 1 June 1830
2. Richard Henry Dana (b. 15 November 1787 - Cambridge, MA, d. 2 February 1879 - Boston, MA)  
sp. Ruth Charlotte Smith (b. 8 November 1787 - Taunton, MA, d. 10 February 1822 - Cambridge, MA), m. 11 May 1813
3. **Ruth Charlotte Dana** (b. 28 February 1814, d. 23 September 1901 - Boston, MA)
3. **Richard Henry Dana Jr** (b. 1 August 1815 - Cambridge, MA, d. 1882 - Rome, Italy)  
sp. **Sarah Watson** (b. 1814 - Hartford, CT, d. 1907), m. 1841
4. **Sarah Watson Dana "Sallie"** (b. 12 June 1842 - Roxbury, Suffolk, MA, d. 4 May 1902 - New Haven, CT)

Individuals who appear repeatedly in the collection are marked **in bold**.

- sp. **Walter Scott Swayne** (b. 9 March 1857 - Lancaster, PA, d. 1 November 1923 - New Haven, CT), m. 8 February 1887 - Buffalo, NY
4. **Ruth Charlotte Dana "Charlotte"** (b. 30 June 1844 - Boston, MA, d. 3 May 1903 - Cambridge, MA)  
sp. **Francis Ogden Lyman** (b. 9 August 1846 - HI, d. 16 December 1915 - Micco, FL), m. 27 December 1876 - Boston, MA
5. Ruth Dana Lyman (b. 20 March 1878 - Chicago, IL, d. 20 March 1878 - Chicago, IL)
5. Ruth Charlotte Lyman (b. 22 December 1880 - Chicago, IL, d. 5 February 1882 - Winnetka, Cook, IL)
5. **Charlotte Dana Lyman "Sister Hilda"** (b. 9 August 1885 - Danville, NY)
5. **Richard Dana Lyman** (b. 5 February 1888 - Chicago, IL, d. 27 June 1944 - Chicago, IL)  
sp. **Emily Orwig** (b. 22 June 1888 - Winnetka, IL), m. 12 April 1922 - Winnetka, IL
6. Katherine Ellery Lyman (b. 19 May 1923 - Winnetka, IL)
6. Louise Dana Lyman (b. 1 November 1928 - Winnetka, IL)
4. **Elizabeth Ellery Dana "Lily"** (b. 3 April 1846 - Boston, MA, d. 15 February 1939 - Cambridge, MA)
4. **Mary Rosamond Dana "Rosamund"** (b. 1 September 1848 - Boston, MA, d. 17 February 1937 - Portsmouth, NH)  
sp. Henry Fearing Wild (chr. about 1851, d. 17 February 1909 - Goldfield, NV), m. 26 August 1878 - Boston, MA
5. Rosamond Dana Wild (b. 9 July 1879 - Boston, MA, d. about 1956)
4. **Richard Henry Dana III** (b. 3 January 1851 - Cambridge, MA, d. 16 December 1931 - Cambridge, MA)  
sp. Edith Longfellow (b. 22 October 1853 - Cambridge, MA, d. 21 July 1915 - Manchester, MA), m. 10 January 1878 - Cambridge, MA
5. Richard Henry Dana IV (b. 1 September 1879 - Cambridge, MA, d. 29 November 1933)  
sp. Ethel Nathalie Smith (b. 9 June 1878, d. 15 January 1972), m. 1911
6. Richard Henry Dana V (b. March 1912, d. 6 January 1984 - New York, NY)  
sp. Katherine Montgomery (b. 17 January 1922, d. 16 June 2004), m. 1948
6. Mary Pepperell Dana (b. 25 February 1914, d. 1 February 2000)  
sp. Arthur Leffingwell Shipman Jr (b. 3 July 1906 - CT, d. September 1983), m. 1941
5. Henry Wadsworth Longfellow Dana (b. 26 January 1881 - Boston, MA, d. 26 April 1950 - Cambridge, MA)

Individuals who appear repeatedly in the collection are marked **in bold**.

5. Frances Appleton Dana (b. 25 May 1883 - Boston, MA, d. 6 October 1933 - Cold Spring, Putnam, NY)  
sp. Henry Casimir de Rham (b. 2 February 1882 - NY, d. 1947), m. 25 January 1905 - Cambridge, MA
6. Henry Longfellow de Rham (b. 5 September 1905, d. January 1976)  
sp. Eugenia Devlin  
sp. Edith Hyde Colby (b. 1906), m. 1927
6. Richard Dana de Rham (b. 25 March 1911 - Cambridge, MA, d. June 1985)  
sp. Lee Selden McCabe (b. 26 September 1911, d. 16 September 2001), m. 1937
5. Allston Dana (b. 29 September 1884 - Boston, MA, d. 12 May 1952 - Harrisburg, PA)  
sp. Dorothy Hovey Goodale (b. 16 February 1887 - Waltham, MA, d. 27 February 1971 - Princeton, NJ), m. 11 June 1908 - Cambridge, MA
6. Dorothy Dana (b. 8 November 1909 - MT, d. 22 August 1969 - Princeton, NJ)  
sp. Werner Hollman (b. 26 January 1908 - Germany, d. 13 April 1989)
6. Allston Fairfield Dana (b. 15 June 1911, d. 15 October 1998)  
sp. Hetty Cunningham (b. 1919)  
sp. Elizabeth Cullen Broome (b. 27 April 1919, d. 20 December 2000)
6. Thomas Appleton Dana (b. 17 September 1912, d. 29 May 1995)  
sp. Suzanne Wilson Hutton (b. 13 March 1920, d. 22 June 1995)
5. Edmund Trowbridge Dana (b. 25 October 1886 - Boston, MA, d. 14 August 1981 - Palo Alto, CA)  
sp. Jesse Holliday (b. 1884 - London, England, d. 17 June 1915 - Nantucket, MA), m. 15 June 1912 - Cambridge, MA
6. Dan Dana (b. 6 July 1914, d. 23 December 2000 - Santa Clara, CA)  
sp. Elizabeth Boott Duveneck (b. 4 April 1915 - Boston, MA, d. 23 January 2009), m. 1946  
sp. Alma Victoria Olsson (b. 25 February 1897, d. 24 May 1987 - Santa Clara, CA), m. 1933
5. Delia Farley Dana (b. 2 October 1889 - Cambridge, MA, d. 18 February 1989 - Seattle, WA)  
sp. Robert Hare Hutchinson (b. 15 August 1887 - Manchester, MA, d. 1975), m. 26 June 1913 - Manchester, MA
6. Peter Dana (b. 1915, d. 1969)  
sp. Edith May Moses (b. 1910, d. 1969)
6. Bertrand Hutchinson (b. 1917)  
sp. Helen Turnbull Chestnut (b. 1920)
6. Ann Hutchinson (b. November 1918 - NY, d. 9 April 2022 - London, England)

Individuals who appear repeatedly in the collection are marked **in bold**.

- sp. Richard Trent (b. 1914), m. 1946  
sp. Ivor Forbes Guest (b. 20 April 1920 - London, England, d. 30 March 2018 - London, England), m. 1962 - England
6. Alfred Dana (b. 4 February 1927, d. 26 June 2001 -WA)  
sp. Alaine Sutherland (b. 1935), m. 27 May 1961 - Imperial, CA  
sp. Helen L Blake (b. 1925), m. 23 September 1978 - San Diego, CA
- sp. Helen Sherwood Ford (b. 26 February 1865 - Troy, NY, d. 24 January 1934 - Cambridge, MA), m. 25 February 1922 - New York, NY
4. **Angela Henrietta Channing Dana “Henrietta”** (b. 22 February 1857 - Cambridge, MA, d. 29 January 1928 - NY)  
sp. Henry Whipple Skinner (b. 8 June 1852 - Detroit, MI, d. 29 June 1916 - Marblehead, MA), m. 25 June 1892 - Cambridge, MA
5. **Richard Dana Skinner** (b. 21 April 1893 - Detroit, Wayne, MI, d. 6 November 1941 - Norwalk, CT)  
sp. Margaret Mary Hill (b. 1896 - MA), m. 2 April 1913 - NY
6. Henrietta Dana Skinner (b. 25 March 1914 - Cambridge, MA, d. 13 September 1998 - Cresskill, NJ)  
sp. Irving Woodworth Raymond (b. 10 October 1898 -Boston, MA, d. 10 August 1964 - York, York, ME), m. 23 May 1934 - New York, NY
6. Eleanor Carroll Skinner (b. 25 March 1914 - Cambridge, MA, d. 11 December 1998)  
sp. Joseph Maria Calderon (b. 12 April 1910, d. October 1979), m. 10 June 1943 - New York, NY
6. Margaret Hill Skinner (b. 13 December 1919 - Boston, MA)  
sp. Gregory Bernard Smith (b. about 1913), m. 10 July 1943 - Westport, CT
3. Edmund Trowbridge Dana (b. 29 August 1818 - Cambridge, MA, d. 18 May 1869 - Boston, MA)
3. Susan Dana (b. 3 June 1820, d. 27 April 1822)
2. Elizabeth Ellery Dana (b. 1789, d. 1874)
2. Sarah Ann Dana (b. 1 September 1791, d. 6 February 1866)

Individuals who appear repeatedly in the collection are marked **in bold**.



***PART 3:***

***COLLECTION LISTING,  
SUBCOLLECTION I. MANUSCRIPTS***

**Series I. Correspondence -- Chronological<sup>5</sup>**

	<b>Box</b>	<b>Folder</b>
1808	1	1
1824	1	2
1824 [oversize]	86	1
1826	1	3
1826 [oversize]	86	2
1829	1	4
1832	1	5
1835	1	6
1835 [oversize flat]	87	1
1836	1	7
1837	1	8
1838	1	9
1838 [oversize flat]	87	2
1839	1	10
1839 [oversize flat]	87	3

**1840s**

	<b>Box</b>	<b>Folder</b>
1841-1846	1	11
1841-1846 [oversize flat]	87	4
1843 (accession LONG-70)	1	12
1843 (accession LONG-70) [oversize flat]	87	5
1844 (accession LONG-70)	1	13
1847	1	14
1847 [oversize flat]	87	6
1847 (accession LONG-70)	1	15
1848	1	16
1848 [oversize flat]	87	7
1849	1	17
1849 [oversize]	86	3
1849 [oversize]	87	8
1849 (accession LONG-70)	1	18
1849 (accession LONG-70) [oversize]	86	4
1849 (accession LONG-70) [oversize flat]	87	9

**1850s**

	<b>Box</b>	<b>Folder</b>
1850	1	19
1850 [oversize]	86	5
1850 [oversize flat]	87	10

<sup>5</sup> All materials in this series are part of accession LONG-1 unless noted as being part of accession LONG-70.

	<b>Box</b>	<b>Folder</b>
1850 (accession LONG-70)	1	20
1850 (accession LONG-70) [oversize]	86	6
1850 (accession LONG-70) [oversize flat]	87	11
1851	1	21
1851 [oversize]	86	7
1851 [oversize flat]	87	12
1851 (accession LONG-70)	1	22
1851 (accession LONG-70) [oversize]	86	8
1851 (accession LONG-70) [oversize flat]	87	13
1852	1	23
1852 [oversize]	86	9
1852 [oversize flat]	87	14
1853, Part 1	1	24
1853, Part 2 <sup>6</sup>	1	25
1853 [oversize] <sup>7</sup>	86	10
1853 [oversize flat] <sup>8</sup>	87	15
1853 (accession LONG-70)	1	26
1854	1	27
1854 [oversize]	86	11
1854 [oversize flat]	87	16
1855	1	28
1855 [oversize]	86	12
1855 [oversize flat]	87	17
1856	1	29
1856 [oversize]	86	13
1856 [oversize flat]	87	18
1856 (accession LONG-70)	1	30
1856 (accession LONG-70) [oversize flat]	87	19
1857, Part 1	2	1
1857, Part 2	2	2
1857 [oversize] <sup>9</sup>	86	14
1857 [oversize flat] <sup>10</sup>	87	20
1857 (accession LONG-70)	2	3
1858, Part 1	2	4
1858, Part 2	2	5
1858, Part 3	2	6
1858 [oversize] <sup>11</sup>	86	15

<sup>6</sup> Natural history item removed to box 89, envelope 1.

<sup>7</sup> Items removed from box 1, folder 24 titled "1853, Part 1" and from box 1, folder 25 titled "1853, Part 2."

<sup>8</sup> Items removed from box 1, folder 24 titled "1853, Part 1" and from box 1, folder 25 titled "1853, Part 2."

<sup>9</sup> Items removed from box 2, folder 1 titled "1857, Part 1" and from box 2, folder 2 titled "1857, Part 2."

<sup>10</sup> Item(s) removed from box 2, folder 1 titled "1857, Part 1."

<sup>11</sup> Items removed from box 2, folder 4 titled "1858, Part 1" and from box 2, folder 5 titled "1858, Part 2."

	Box	Folder
1858 [oversize flat] <sup>12</sup>	87	21
1858 (accession LONG-70)	2	7
1859, Part 1	2	8
1859, Part 2	2	9
1859, Part 3	3	1
1859, Part 4	3	2
1859 [oversize flat] <sup>13</sup>	87	22
1859 (accession LONG-70)	3	3

**1860s**

	Box	Folder
1860, Part 1	3	4
1860, Part 2	3	5
1860, Part 3	3	6
1860 (accession LONG-70)	3	7
1861, Part 1	3	8
1861, Part 2	4	1
1861 [oversize] <sup>14</sup>	86	16
1861 (accession LONG-70)	4	2
1862, Part 1	4	3
1862, Part 2	4	4
1862 [oversize] <sup>15</sup>	86	17
1862 (accession LONG-70)	4	5
1863, Part 1	4	6
1863, Part 2	4	7
1863 <sup>16</sup>	86	18
1863 (accession LONG-70)	4	8
1864, Part 1	4	9
1864, Part 2	4	10
1864, Part 3	4	11
1865, Part 1	5	1
1865, Part 2	5	2
1865, Part 3	5	3
1865 [oversize] <sup>17</sup>	86	19
1866, Part 1	5	4
1866, Part 2	5	5
1866 (accession LONG-70)	5	6

<sup>12</sup> Item(s) removed from box 2, folder 6 titled "1858, Part 3."

<sup>13</sup> Item(s) removed from box 3, folder 2 titled "1859, Part 4."

<sup>14</sup> Item(s) removed from box 4, folder 1 titled "1861, Part 2."

<sup>15</sup> Item(s) removed from box 4, folder 4 titled "1862, Part 2."

<sup>16</sup> Item(s) removed from box 4, folder 7 titled "1863, Part 2."

<sup>17</sup> Item(s) removed from box 5, folder 2 titled "1865, Part 2."

	Box	Folder
1867, Part 1	5	7
1867, Part 2	5	8
1867, Part 3 <sup>18</sup>	5	9
1867 (accession LONG-70)	6	1
1868, Part 1	6	2
1868, Part 2	6	3
1868, Part 3	6	4
1868 [oversize] <sup>19</sup>	86	20
1868 (accession LONG-70)	6	5
1869, Part 1 (to E.E.D.)	6	6
1869, Part 2 (from E.E.D.)	6	7
1869, Part 3 (letters sent neither by nor to E.E.D.)	6	8
1869, Part 4 (letters sent neither by nor to E.E.D.)	6	9
1869, Part 5 (letters sent neither by nor to E.E.D.)	7	1
1869, Part 6 (letters sent neither by nor to E.E.D.)	7	2
1869 [oversize flat] <sup>20</sup>	87	23
1869 (accession LONG-70)	7	3

**1870s**

	Box	Folder
1870, Part 1	7	4
1870, Part 2	7	5
1870, Part 3 (to E.E.D.)	7	6
1870, Part 4 (from E.E.D.)	7	7
1870, Part 5 (letters sent neither by nor to E.E.D.)	7	8
1870, Part 6	7	9
1870, Part 7	7	10
1870 (accession LONG-70)	8	1
1871, Part 1 (to E.E.D.)	8	2
1871, Part 2 (from E.E.D.)	8	3
1871, Part 3 (letters sent neither by nor to E.E.D.)	8	4
1871, Part 4 (letters sent neither by nor to E.E.D.)	8	5
1871, Part 5	8	6
1871 [oversize] <sup>21</sup>	86	21
1871 (accession LONG-70)	8	7
1872, Part 1 (to E.E.D.)	8	8
1872, Part 2 (to E.E.D.)	9	1
1872, Part 3 (to E.E.D.)	9	2
1872, Part 4 (from E.E.D.)	9	3

<sup>18</sup> Photographs removed to box 91, envelopes 1-3.

<sup>19</sup> Item(s) removed from box 6, folder 4 titled "1868, Part 3."

<sup>20</sup> Item(s) removed from box 7, folder 2 titled "1869, Part 6 (letters sent neither by nor to E.E.D.)."

<sup>21</sup> Item(s) removed from box 8, folder 3 titled "1871, Part 2 (from E.E.D.)."

	<b>Box</b>	<b>Folder</b>
1872, Part 5 (from E.E.D.)	9	4
1872, Part 6 (from E.E.D.)	9	5
1872, Part 7 (letters sent neither by nor to E.E.D.)	9	6
1872, Part 8 (letters sent neither by nor to E.E.D.)	9	7
1872 [oversize] <sup>22</sup>	86	22
1872 [oversize flat] <sup>23</sup>	88	1
1872 (accession LONG-70)	9	8
1873, Part 1 (to E.E.D.) <sup>24</sup>	10	1
1873, Part 2 (to E.E.D.)	10	2
1873, Part 3 (from E.E.D.) <sup>25</sup>	10	3
1873, Part 4 (from E.E.D.)	10	4
1873, Part 5 (from E.E.D.)	10	5
1873, Part 6 (letters sent neither by nor to E.E.D.)	10	6
1873, Part 7 (letters sent neither by nor to E.E.D.)	10	7
1873 (accession LONG-70)	10	8
1873 (accession LONG-70) [oversize flat] <sup>26</sup>	88	2
1874, Part 1 (to E.E.D.)	11	1
1874, Part 2 (from E.E.D.)	11	2
1874, Part 3 (from E.E.D.)	11	3
1874, Part 4 (letters sent neither by nor to E.E.D.)	11	4
1874, Part 5 (letters sent neither by nor to E.E.D.)	11	5
1874 [oversize] <sup>27</sup>	86	23
1874 (accession LONG-70)	11	6
1875, Part 1 (to E.E.D.)	11	7
1875, Part 2 (to E.E.D.)	11	8
1875, Part 3 (to E.E.D.)	11	9
1875, Part 4 (from E.E.D.)	11	10
1875, Part 5 (from E.E.D.)	11	11
1875, Part 6 (letters sent neither by nor to E.E.D.)	11	12
1875, Part 7 (letters sent neither by nor to E.E.D.)	12	1
1875 [oversize] <sup>28</sup>	86	24
1875 [oversize flat] <sup>29</sup>	88	3

<sup>22</sup> Items removed from box 9, folder 3 titled "1872, Part 4 (from E.E.D.)" and from box 9, folder 7 titled "1872, Part 8 (letters neither by nor to E.E.D.)."

<sup>23</sup> Item(s) removed from box 9, folder 7 titled "1872, Part 8 (letters sent neither by nor to E.E.D.)."

<sup>24</sup> Natural history items removed to box 89, envelopes 2-3.

<sup>25</sup> Natural history item removed to box 89, envelope 4. Photograph removed to box 91, envelope 4.

<sup>26</sup> Item(s) removed from box 13, folder 3 titled "1877 (accession LONG-70)." (This item was misfiled as 1877 and is actually dated 1873.)

<sup>27</sup> Items removed from box 11, folder 4 titled "1874, Part 4 (letters neither by nor to E.E.D.)" and from box 11, folder 5 titled "1874, Part 5 (letters neither by nor to E.E.D.)."

<sup>28</sup> Items removed from box 11, folder 7 titled "1875, Part 1 (E.E.D.)"; from box 11, folder 10 titled "1875, Part 3 (to E.E.D.)"; and from box 11, folder 12 titled "1875, Part 6 (letters neither by nor to E.E.D.)."

<sup>29</sup> Item(s) removed from box 11, folder 12 titled "1875, Part 6 (letters neither by nor to E.E.D.)."

	Box	Folder
1875 (accession LONG-70)	12	2
1876, Part 1 (to E.E.D.)	12	3
1876, Part 2 (from E.E.D.)	12	4
1876, Part 3 (from E.E.D.) <sup>30</sup>	12	5
1876, Part 4 (letters sent neither by nor to E.E.D.)	12	6
1876, Part 5 (letters sent neither by nor to E.E.D.)	12	7
1876, Part 6 (letters sent neither by nor to E.E.D.)	12	8
1876, Part 7 (unidentified letters)	12	9
1876 [oversize] <sup>31</sup>	86	25
1876 (accession LONG-70)	12	10
1877, Part 1 (to E.E.D.)	12	11
1877, Part 2 (from E.E.D.)	12	12
1877, Part 3 (letters sent neither by nor to E.E.D.)	13	1
1877, Part 4 (letters sent neither by nor to E.E.D.)	13	2
1877 (accession LONG-70) <sup>32</sup>	13	3
1878, Part 1	13	4
1878, Part 2	13	5
1878, Part 3	13	6
1878, Part 4	13	7
1878, Part 5	13	8
1878, Part 6	13	9
1878 [oversize flat] <sup>33</sup>	88	4
1878 (accession LONG-70)	13	10
1879, Part 1	14	1
1879, Part 2	14	2
1879, Part 3	14	3
1879 [oversize flat] <sup>34</sup>	88	5
1879 (accession LONG-70)	14	4

**1880s**

	Box	Folder
1880, Part 1	14	5
1880, Part 2	14	6
1880, Part 3	14	7
1880, Part 4	14	8
1880, Part 5 <sup>35</sup>	15	1
1880 [oversize flat] <sup>36</sup>	88	6

<sup>30</sup> Object removed to chipboard box 2 within box 90.

<sup>31</sup> Item(s) removed from box 12, folder 5 titled "1876, Part 3 (from E.E.D.)."

<sup>32</sup> Oversize item removed to box 88, folder 2. (This item was misfiled as 1877 and is actually dated 1873.)

<sup>33</sup> Item(s) removed from box 13, folder 9 titled "1878, Part 6."

<sup>34</sup> Item(s) removed from box 14, folder 3 titled "1879, Part 3."

<sup>35</sup> Photograph removed to box 91, envelope 5.

<sup>36</sup> Item(s) removed from box 15, folder 1 titled "1880, Part 5."

	<b>Box</b>	<b>Folder</b>
1880 (accession LONG-70)	15	2
1881, Part 1	15	3
1881, Part 2 <sup>37</sup>	15	4
1881, Part 3 <sup>38</sup>	15	5
1881, Part 4	15	6
1881 [oversize] <sup>39</sup>	86	26
1881 [oversize flat] <sup>40</sup>	88	7
1881 (accession LONG-70) <sup>41</sup>	15	7
1882, Part 1	15	8
1882, Part 2 <sup>42</sup>	16	1
1882, Part 3	16	2
1882, Part 4	16	3
1882, Part 5	16	4
1882, Part 6 <sup>43</sup>	16	5
1882, Part 7	16	6
1882 (accession LONG-70)	16	7
1883, Part 1	17	1
1883, Part 2	17	2
1883, Part 3	17	3
1883, Part 4	17	4
1883, Part 5	17	5
1883, Part 6	17	6
1883 (accession LONG-70)	17	7
1884, Part 1 <sup>44</sup>	18	1
1884, Part 2	18	2
1884, Part 3	18	3
1884, Part 4 <sup>45</sup>	18	4
1884, Part 5	18	5
1884, Part 6	18	6
1884 (accession LONG-70)	18	7
1885, Part 1	18	8
1885, Part 2	18	9
1885, Part 3	19	1
1885, Part 4	19	2
1885, Part 5	19	3

<sup>37</sup> Object removed to chipboard box 3 within box 90.

<sup>38</sup> Natural history items removed to box 89, envelopes 5-6.

<sup>39</sup> Item(s) removed from box 15, folder 3 titled "1881, Part 1."

<sup>40</sup> Item(s) removed from box 15, folder 3 titled "1881, Part 1."

<sup>41</sup> Natural history item removed to box 89, envelope 7.

<sup>42</sup> Natural history item removed to box 89, envelope 8.

<sup>43</sup> Natural history items removed to box 89, envelopes 9-11.

<sup>44</sup> Natural history items removed to box 89, envelopes 12-14.

<sup>45</sup> Object removed to chipboard box 4 within box 90.



	<b>Box</b>	<b>Folder</b>
1885, Part 6	19	4
1885, Part 7	19	5
1885 (accession LONG-70)	19	6
1885 (accession LONG-70) [oversize flat]	88	8
1886, Part 1	19	7
1886, Part 2	19	8
1886, Part 3	19	9
1886, Part 4	19	10
1886, Part 5	20	1
1886, Part 6	20	2
1886, Part 7	20	3
1886, Part 8	20	4
1886, Part 9	20	5
1886 (accession LONG-70), Part 1 <sup>46</sup>	20	6
1886 (accession LONG-70), Part 2	20	7
1887, Part 1	20	8
1887, Part 2	20	9
1887, Part 3	21	1
1887, Part 4	21	2
1887, Part 5	21	3
1887, Part 6	21	4
1887, Part 7	21	5
1887 [oversize flat] <sup>47</sup>	88	9
1887 (accession LONG-70), Part 1 <sup>48</sup>	21	6
1887 (accession LONG-70), Part 2	21	7
1887 (accession LONG-70) [oversize flat] <sup>49</sup>	88	10
1888, Part 1	21	8
1888, Part 2	21	9
1888, Part 3	22	1
1888, Part 4	22	2
1888, Part 5	22	3
1888, Part 6	22	4
1888 [oversize] <sup>50</sup>	86	27
1888 (accession LONG-70)	22	5
1889, Part 1	22	6
1889, Part 2	22	7
1889, Part 3	22	8
1889, Part 4	22	9

<sup>46</sup> Natural history items removed to box 89, envelopes 15-16. Object removed to chipboard box 5 within box 90.

<sup>47</sup> Items removed from box 20, folder 9 titled "1887, Part 2"; from box 21, folder 2 titled "1887, Part 4"; and from box 21, folder 4 titled "1887, Part 6."

<sup>48</sup> Photograph removed to box 91, envelope 6.

<sup>49</sup> Item(s) removed from box 21, folder 6 titled "1887 (accession LONG-70), Part 1"

<sup>50</sup> Item(s) removed from box 22, folder 3 titled "1888, Part 5."

	Box	Folder
1889, Part 5	23	1
1889, Part 6	23	2
1889, Part 7	23	3
1889, Part 8 <sup>51</sup>	23	4
1889 [oversize] <sup>52</sup>	86	28
1889 [oversize flat] <sup>53</sup>	88	11
1889 (accession LONG-70)	23	5
1889 (accession LONG-70) [oversize flat]	88	12

**1890s**

	Box	Folder
1890, Part 1 <sup>54</sup>	23	6
1890, Part 2	23	7
1890, Part 3	24	1
1890, Part 4	24	2
1890, Part 5	24	3
1890, Part 6	24	4
1890 (accession LONG-70) <sup>55</sup>	24	5
1890 (accession LONG-70) [oversize flat]	88	13
1891, Part 1	24	6
1891, Part 2	24	7
1891, Part 3	25	1
1891, Part 4	25	2
1891, Part 5	25	3
1891, Part 6	25	4
1891, Part 7	25	5
1891 (accession LONG-70)	25	6
1892, Part 1	26	1
1892, Part 2	26	2
1892, Part 3	26	3
1892, Part 4	26	4
1892, Part 5	26	5
1892, Part 6	26	6
1892, Part 7	26	7
1892, Part 8	26	8
1892 (accession LONG-70)	26	9
1893, Part 1	27	1
1893, Part 2	27	2

<sup>51</sup> Natural history item removed to box 89, envelope 17.

<sup>52</sup> Item(s) removed from box 22, folder 9 titled "1889, Part 4."

<sup>53</sup> Item(s) removed from box 23, folder 3 titled "1889, Part 7."

<sup>54</sup> Photograph removed to box 91, envelope 7.

<sup>55</sup> Object removed to chipboard box 6 within box 90.

	<b>Box</b>	<b>Folder</b>
1893, Part 3	27	3
1893, Part 4	27	4
1893, Part 5 <sup>56</sup>	27	5
1893, Part 6	27	6
1893 (accession LONG-70)	27	7
1893 (accession LONG-70) [oversize]	86	29
1894, Part 1 <sup>57</sup>	28	1
1894, Part 2	28	2
1894, Part 3	28	3
1894, Part 4	28	4
1894, Part 5	28	5
1894, Part 6	28	6
1894, Part 7	28	7
1894, Part 8	29	1
1894 [oversize] <sup>58</sup>	86	30
1894 [oversize flat] <sup>59</sup>	88	14
1894 (accession LONG-70)	29	2
1895, Part 1 <sup>60</sup>	29	3
1895, Part 2	29	4
1895, Part 3	29	5
1895, Part 4	29	6
1895, Part 5	29	7
1895, Part 6	30	1
1895 (accession LONG-70), Part 1 <sup>61</sup>	30	2
1895 (accession LONG-70), Part 2	30	3
1895 (accession LONG-70) [oversize] <sup>62</sup>	86	31
1896, Part 1	30	4
1896, Part 2	30	5
1896, Part 3	30	6
1896, Part 4	30	7
1896, Part 5	30	8
1896, Part 6	31	1
1896, Part 7	31	2
1896 [oversize] <sup>63</sup>	86	32
1896 [oversize flat] <sup>64</sup>	88	15

<sup>56</sup> Objects removed to chipboard boxes 7a-7b within box 90.

<sup>57</sup> Oversize item(s) removed to box 88, folder 14. Natural history item removed to box 89, envelope 18.

<sup>58</sup> Item(s) removed from box 28, folder 2 titled "1894, Part 2."

<sup>59</sup> Items removed from box 28, folder 1 titled "1894, Part 1"; from box 28, folder 4 titled "1894, Part 4"; and from box 28, folder 6 titled "1894, Part 6."

<sup>60</sup> Object removed to chipboard box 8 within box 90.

<sup>61</sup> Oversize item(s) removed to box 86, folder 31. Natural history items removed to box 89, envelopes 19-20.

<sup>62</sup> Item(s) removed from box 30, folder 2 titled "1895 (accession LONG-70), Part 1."

<sup>63</sup> Item(s) removed from box 30, folder 8 titled "1896, Part 5."

	<b>Box</b>	<b>Folder</b>
1896 (accession LONG-70)	31	3
1896 (accession LONG-70) [oversize flat]	88	16
1897, Part 1	31	4
1897, Part 2	31	5
1897, Part 3 <sup>65</sup>	31	6
1897, Part 4	31	7
1897, Part 5	31	8
1897, Part 6	32	1
1897, Part 7	32	2
1897, Part 8	32	3
1897, Part 9	32	4
1897, Part 10	32	5
1897 [oversize flat] <sup>66</sup>	88	17
1897 (accession LONG-70)	32	6
1897 (accession LONG-70) [oversize flat]	88	18
1898, Part 1 <sup>67</sup>	32	7
1898, Part 2	32	8
1898, Part 3	33	1
1898, Part 4	33	2
1898, Part 5	33	3
1898, Part 6	33	4
1898, Part 7	33	5
1898, Part 8	33	6
1898, Part 9	33	7
1898, Part 10	33	8
1898, Part 11	33	9
1898, Part 12	34	1
1898 (accession LONG-70), Part 1	34	2
1898 (accession LONG-70), Part 2	34	3
1899, Part 1	34	4
1899, Part 2	34	5
1899, Part 3	34	6
1899, Part 4	34	7
1899, Part 5	34	8
1899, Part 6	34	9
1899, Part 7	35	1
1899, Part 8	35	2
1899, Part 9	35	3

<sup>64</sup> Items removed from box 30, folder 6 titled "1896, Part 3" and from box 31, folder 1 titled "1896, Part 6."

<sup>65</sup> Object removed to chipboard box 9 within box 90.

<sup>66</sup> Items removed from box 31, folder 5 titled "1897, Part 2."; from box 31, folder 8 titled "1897, Part 5"; from box 32, folder 1 titled "1897, Part 6"; and from box 32, folder 4 titled "1897, Part 9."

<sup>67</sup> Natural history items removed to box 89, envelopes 21-22.

	Box	Folder
1899, Part 10	35	4
1899 (accession LONG-70), Part 1	35	5
1899 (accession LONG-70), Part 2	35	6

**1900s**

	Box	Folder
1900, Part 1	35	7
1900, Part 2	35	8
1900, Part 3	36	1
1900, Part 4	36	2
1900, Part 5 <sup>68</sup>	36	3
1900, Part 6	36	4
1900, Part 7 <sup>69</sup>	36	5
1900, Part 8	36	6
1900, Part 9	36	7
1900, Part 10	36	8
1900, Part 11	36	9
1900, Part 12	37	1
1900 [oversize] <sup>70</sup>	86	33
1900 (accession LONG-70), Part 1 <sup>71</sup>	37	2
1900 (accession LONG-70), Part 2	37	3
1900 (accession LONG-70), Part 3	37	4
1900 (accession LONG-70) [oversize] <sup>72</sup>	86	34
1900 (accession LONG-70) [oversize flat] <sup>73</sup>	88	19
1901, Part 1	37	5
1901, Part 2	37	6
1901, Part 3	37	7
1901, Part 4	38	1
1901, Part 5	38	2
1901, Part 6	38	3
1901, Part 7	38	4
1901, Part 8	38	5
1901, Part 9	38	6
1901, Part 10	38	7
1901, Part 11	38	8
1901, Part 12	38	9
1901, Part 13	38	10

<sup>68</sup> Photographs removed to box 91, envelopes 8-10.

<sup>69</sup> Object removed to chipboard box 10 within box 90.

<sup>70</sup> Item(s) removed from box 36, folder 1 titled "1900, Part 3."

<sup>71</sup> Natural history items removed to box 89, envelopes 23-24. Object removed to chipboard box 11 within box 90. Photographs removed to box 91, envelopes 11-15.

<sup>72</sup> Item(s) removed from box 37, folder 3 titled "1900 (accession LONG-70), Part 2."

<sup>73</sup> Item(s) removed from box 37, folder 2 titled "1900 (accession LONG-70), Part 1."

	<b>Box</b>	<b>Folder</b>
1901 [oversize] <sup>74</sup>	86	35
1901 [oversize flat] <sup>75</sup>	88	20
1901 (accession LONG-70), Part 1	39	1
1901 (accession LONG-70), Part 2	39	2
1902, Part 1	39	3
1902, Part 2	39	4
1902, Part 3	39	5
1902, Part 4	39	6
1902, Part 5	39	7
1902, Part 6	40	1
1902, Part 7	40	2
1902, Part 8	40	3
1902, Part 9	40	4
1902, Part 10 <sup>76</sup>	40	5
1902 [oversize] <sup>77</sup>	86	36
1902 (accession LONG-70)	40	6
1903, Part 1	40	7
1903, Part 2	40	8
1903, Part 3	41	1
1903, Part 4	41	2
1903, Part 5	41	3
1903, Part 6	41	4
1903, Part 7	41	5
1903, Part 8	41	6
1903, Part 9	41	7
1903, Part 10	41	8
1903, Part 11	41	9
1903, Part 12	41	10
1903, Part 13	42	1
1903, Part 14	42	2
1903, Part 15	42	3
1903 (accession LONG-70), Part 1	42	4
1903 (accession LONG-70), Part 2	42	5
1903 (accession LONG-70), Part 3	42	6
1903 (accession LONG-70) [oversize flat] <sup>78</sup>	88	21
1904, Part 1 <sup>79</sup>	42	7
1904, Part 2 <sup>80</sup>	42	8

<sup>74</sup>Item(s) removed from box 38, folder 7 titled "1901, Part 10."

<sup>75</sup>Item(s) removed from box 38, folder 6 titled "1901, Part 9."

<sup>76</sup> Photographs removed to box 91, envelopes 16-19.

<sup>77</sup> Item(s) removed from box 40, folder 5 titled "1902, Part 10."

<sup>78</sup> Item(s) removed from box 42, folder 4 titled "1903 (accession LONG-70), Part 1."

<sup>79</sup> Photograph removed to box 91, envelope 20.

<sup>80</sup> Object removed to chipboard box 12 within box 90.

	<b>Box</b>	<b>Folder</b>
1904, Part 3 <sup>81</sup>	42	9
1904, Part 4	43	1
1904, Part 5	43	2
1904, Part 6	43	3
1904, Part 7	43	4
1904, Part 8 <sup>82</sup>	43	5
1904, Part 9	43	6
1904, Part 10	43	7
1904, Part 11	43	8
1904 [oversize] <sup>83</sup>	86	37
1904 (accession LONG-70), Part 1	43	9
1904 (accession LONG-70), Part 2 <sup>84</sup>	43	10
1904 (accession LONG-70) [oversize] <sup>85</sup>	86	38
1905, Part 1	44	1
1905, Part 2 <sup>86</sup>	44	2
1905, Part 3	44	3
1905, Part 4	44	4
1905, Part 5	44	5
1905, Part 6 <sup>87</sup>	44	6
1905, Part 7	44	7
1905, Part 8	45	1
1905 [oversize] <sup>88</sup>	86	39
1905 (accession LONG-70), Part 1 <sup>89</sup>	45	2
1905 (accession LONG-70), Part 2	45	3
1906, Part 1	45	4
1906, Part 2	45	5
1906, Part 3 <sup>90</sup>	45	6
1906, Part 4	45	7
1906, Part 5	45	8
1906, Part 6	45	9
1906 [oversize flat] <sup>91</sup>	88	22
1906 (accession LONG-70) <sup>92</sup>	46	1

<sup>81</sup> Object removed to chipboard box 13 within box 90.

<sup>82</sup> Photographs removed to box 91, envelopes 21-22.

<sup>83</sup> Items removed from box 43, folder 6 titled "1904, Part 9" and from box 43, folder 8 titled "1904, Part 11."

<sup>84</sup> Natural history item removed to box 89, envelope 25.

<sup>85</sup> Item(s) removed from box 43, folder 9 titled "1904 (accession LONG-70), Part 1."

<sup>86</sup> Object removed to chipboard box 14 within box 90.

<sup>87</sup> Photograph removed to box 91, envelope 23.

<sup>88</sup> Item(s) removed from box 44, folder 4 titled "1905, Part 4."

<sup>89</sup> Photograph removed to box 91, envelope 24.

<sup>90</sup> Natural history item removed to box 89, envelope 26.

<sup>91</sup> Item(s) removed from box 45, folder 9 titled "1906, Part 6."

<sup>92</sup> Photographs removed to box 91, envelopes 25-27.

	<b>Box</b>	<b>Folder</b>
1907, Part 1	46	2
1907, Part 2	46	3
1907, Part 3 <sup>93</sup>	46	4
1907, Part 4	46	5
1907, Part 5 <sup>94</sup>	46	6
1907 (accession LONG-70), Part 1 <sup>95</sup>	46	7
1907 (accession LONG-70), Part 2	46	8
1908, Part 1	47	1
1908, Part 2	47	2
1908, Part 3	47	3
1908, Part 4	47	4
1908, Part 5	47	5
1908, Part 6	47	6
1908, Part 7	47	7
1908, Part 8	47	8
1908, Part 9	47	9
1908 (accession LONG-70), Part 1	48	1
1908 (accession LONG-70), Part 2	48	2
1908 (accession LONG-70) [oversize flat] <sup>96</sup>	88	23
1909, Part 1 <sup>97</sup>	48	3
1909, Part 2	48	4
1909, Part 3	48	5
1909, Part 4	48	6
1909, Part 5	48	7
1909, Part 6	48	8
1909, Part 7	48	9
1909, Part 8 <sup>98</sup>	49	1
1909, Part 9	49	2
1909 [oversize] <sup>99</sup>	86	40
1909 [oversize flat] <sup>100</sup>	88	24
1909 (accession LONG-70), Part 1	49	3
1909 (accession LONG-70), Part 2 <sup>101</sup>	49	4

<sup>93</sup> Photograph removed to box 91, envelope 28.

<sup>94</sup> Natural history item removed to box 89, envelope 27.

<sup>95</sup> Photograph removed to box 91, envelope 29.

<sup>96</sup> Item(s) removed from box 48, folder 1 titled "1908 (accession LONG-70), Part 1."

<sup>97</sup> Natural history item removed to box 89, envelope 28.

<sup>98</sup> Objects removed to chipboard boxes 15-16 within box 90.

<sup>99</sup> Item(s) removed from box 48, folder 8 titled "1909, Part 6."

<sup>100</sup> Item(s) removed from box 48, folder 8 titled "1909, Part 6."

<sup>101</sup> Photograph removed to box 91, envelope 30.



**1910s**

	<b>Box</b>	<b>Folder</b>
1910, Part 1	49	5
1910, Part 2	49	6
1910, Part 3	49	7
1910, Part 4	49	8
1910, Part 5	49	9
1910, Part 6	50	1
1910, Part 7	50	2
1910, Part 8	50	3
1910, Part 9	50	4
1910, Part 10	50	5
1910 [oversize] <sup>102</sup>	86	41
1910 (accession LONG-70)	50	6
1910 (accession LONG-70) [oversize]	86	42
1911, Part 1	50	7
1911, Part 2	51	1
1911, Part 3 <sup>103</sup>	51	2
1911, Part 4	51	3
1911, Part 5	51	4
1911, Part 6	51	5
1911, Part 7	51	6
1911, Part 8	51	7
1911, Part 9	51	8
1911, Part 10	51	9
1911, Part 11	51	10
1911, Part 12	52	1
1911, Part 13	52	2
1911, Part 14	52	3
1911 [oversize] <sup>104</sup>	86	43
1911 (accession LONG-70)	52	4
1912, Part 1	52	5
1912, Part 2	52	6
1912, Part 3	52	7
1912, Part 4	52	8
1912, Part 5	52	9
1912, Part 6	53	1
1912, Part 7	53	2
1912, Part 8	53	3
1912, Part 9	53	4
1912 [oversize] <sup>105</sup>	86	44

<sup>102</sup> Item(s) removed from box 50, folder 5 titled "1910, Part 10."<sup>103</sup> Photographs removed to box 91, envelopes 31-32.<sup>104</sup> Item(s) removed from box 52, folder 3 titled "1911, Part 14."

	<b>Box</b>	<b>Folder</b>
1912 [oversize flat] <sup>106</sup>	88	25
1912 (accession LONG-70) <sup>107</sup>	53	5
1913, Part 1	53	6
1913, Part 2	53	7
1913, Part 3	53	8
1913, Part 4	53	9
1913, Part 5	53	10
1913, Part 6	54	1
1913, Part 7	54	2
1913, Part 8	54	3
1913 [oversize] <sup>108</sup>	86	45
1913 (accession LONG-70), Part 1	54	4
1913 (accession LONG-70), Part 2	54	5
1914, Part 1	54	6
1914, Part 2	54	7
1914, Part 3	54	8
1914, Part 4	54	9
1914, Part 5	55	1
1914, Part 6	55	2
1914, Part 7	55	3
1914, Part 8	55	4
1914, Part 9	55	5
1914 (accession LONG-70)	55	6
1915, Part 1	55	7
1915, Part 2	55	8
1915, Part 3	55	9
1915, Part 4	56	1
1915, Part 5	56	2
1915, Part 6	56	3
1915, Part 7 <sup>109</sup>	56	4
1915, Part 8	56	5
1915 [oversize] <sup>110</sup>	86	46
1915 (accession LONG-70), Part 1	56	6
1915 (accession LONG-70), Part 2	56	7
1916, Part 1	56	8
1916, Part 2	57	1

<sup>105</sup> Item(s) removed from box 53, folder 2 titled "1912, Part 7."

<sup>106</sup> Item(s) removed from box 52, folder 9 titled "1912, Part 5."

<sup>107</sup> Object removed to chipboard box 17 within box 90. Photograph removed to box 91, envelope 33.

<sup>108</sup> Item(s) removed from box 54, folder 3 titled "1913, Part 8."

<sup>109</sup> Photograph removed to box 91, envelope 34.

<sup>110</sup> Item(s) removed from box 56, folder 5 titled "1915, Part 8."

	<b>Box</b>	<b>Folder</b>
1916, Part 3	57	2
1916, Part 4	57	3
1916, Part 5	57	4
1916, Part 6	57	5
1916, Part 7 <sup>111</sup>	57	6
1916, Part 8	57	7
1916 (accession LONG-70) <sup>112</sup>	58	1
1917, Part 1	58	2
1917, Part 2	58	3
1917, Part 3	58	4
1917, Part 4 <sup>113</sup>	58	5
1917, Part 5 <sup>114</sup>	58	6
1917, Part 6 <sup>115</sup>	58	7
1917, Part 7	58	8
1917 [oversize] <sup>116</sup>	86	47
1917 (accession LONG-70)	59	1
1917 (accession LONG-70)	86	48
1918, Part 1 <sup>117</sup>	59	2
1918, Part 2	59	3
1918, Part 3	59	4
1918, Part 4	59	5
1918, Part 5	59	6
1918, Part 6	59	7
1918, Part 7 <sup>118</sup>	59	8
1918 [oversize] <sup>119</sup>	86	49
1918 [oversize flat] <sup>120</sup>	88	26
1918 (accession LONG-70) <sup>121</sup>	60	1
1919, Part 1	60	2
1919, Part 2	60	3
1919, Part 3	60	4
1919, Part 4	60	5
1919, Part 5	60	6
1919, Part 6	60	7

<sup>111</sup> Photograph removed to box 91, envelope 35.

<sup>112</sup> Photograph removed to box 91, envelope 36.

<sup>113</sup> Photograph removed to box 91, envelope 37.

<sup>114</sup> Photograph removed to box 91, envelope 38.

<sup>115</sup> Photograph removed to box 91, envelope 39.

<sup>116</sup> Item(s) removed from box 58, folder 3 titled "1917, Part 2."

<sup>117</sup> Photograph removed to box 91, envelope 40.

<sup>118</sup> Photographs removed to box 91, envelopes 41-45.

<sup>119</sup> Item(s) removed from box 59, folder 7 titled "1918, Part 6."

<sup>120</sup> Item(s) removed from box 59, folder 5 titled "1918, Part 4."

<sup>121</sup> Photographs removed to box 91, envelope 46.

	Box	Folder
1919, Part 7	60	8
1919, Part 8	61	1
1919 [oversize] <sup>122</sup>	86	50
1919 (accession LONG-70) <sup>123</sup>	61	2
1919 (accession LONG-70) [oversize flat]	88	27

**1920s**

	Box	Folder
1920, Part 1	61	3
1920, Part 2	61	4
1920, Part 3	61	5
1920, Part 4	61	6
1920, Part 5 <sup>124</sup>	61	7
1920, Part 6	61	8
1920, Part 7	61	9
1920, Part 8 <sup>125</sup>	62	1
1920 [oversize] <sup>126</sup>	86	51
1920 [oversize flat] <sup>127</sup>	88	28
1920 (accession LONG-70) <sup>128</sup>	62	2
1921, Part 1	62	3
1921, Part 2	62	4
1921, Part 3	62	5
1921, Part 4	62	6
1921, Part 5	62	7
1921, Part 6	62	8
1921, Part 7	62	9
1921, Part 8	63	1
1921, Part 9 <sup>129</sup>	63	2
1921, Part 10	63	3
1921, Part 11	63	4
1921 (accession LONG-70)	63	5
1921 (accession LONG-70) [oversize flat]	88	29
1922, Part 1	63	6
1922, Part 2	63	7
1922, Part 3	63	8
1922, Part 4	64	1

<sup>122</sup> Item(s) removed from box 60, folder 8 titled "1919, Part 7."

<sup>123</sup> Photograph removed to box 91, envelope 47.

<sup>124</sup> Oversize item(s) removed to box 88, folder 28.

<sup>125</sup> Object removed to chipboard box 18 within box 90.

<sup>126</sup> Item(s) removed from box 61, folder 5 titled "1920, Part 3."

<sup>127</sup> Item(s) removed from box 61, folder 7 titled "1920, Part 5."

<sup>128</sup> Object removed to chipboard box 19 within box 90.

<sup>129</sup> Photographs removed to box 92, envelopes 1-2.

	<b>Box</b>	<b>Folder</b>
1922, Part 5	64	2
1922, Part 6 <sup>130</sup>	64	3
1922, Part 7	64	4
1922, Part 8	64	5
1922, Part 9	64	6
1922, Part 10 <sup>131</sup>	64	7
1922, Part 11	64	8
1922, Part 12 <sup>132</sup>	65	1
1922, Part 13 <sup>133</sup>	65	2
1922 [oversize] <sup>134</sup>	86	52
1922 [oversize flat] <sup>135</sup>	88	30
1922 (accession LONG-70)	65	3
1923, Part 1	65	4
1923, Part 2	65	5
1923, Part 3	65	6
1923, Part 4	65	7
1923, Part 5	65	8
1923, Part 6	65	9
1923, Part 7	66	1
1923, Part 8	66	2
1923, Part 9 <sup>136</sup>	66	3
1923, Part 10	66	4
1923 (accession LONG-70)	66	5
1924, Part 1 (January-March) <sup>137</sup>	66	6
1924, Part 2 (March-July)	66	7
1924, Part 3 (July-August) <sup>138</sup>	66	8
1924, Part 4 (August)	66	9
1924, Part 5 (August-September)	67	1
1924, Part 6 (October-December)	67	2
1924, Part 7 (unsorted)	67	3
1924 [oversize] <sup>139</sup>	86	53
1924 (accession LONG-70) <sup>140</sup>	67	4

<sup>130</sup> Natural history items removed to box 89, envelopes 29-30.

<sup>131</sup> Photograph removed to box 91, envelope 48.

<sup>132</sup> Photograph removed to box 91, envelope 49.

<sup>133</sup> Photographs removed to box 91, envelope 50 and to box 92, envelope 3.

<sup>134</sup> Items removed from box 64, folder 3 titled "1922, Part 6"; from box 65, folder 1 titled "1922, Part 12"; and from box 65, folder 2 titled "1922, Part 13."

<sup>135</sup> Items removed from box 63, folder 8 titled "1922, Part 3" and from box 64, folder 4 titled "1922, Part 7."

<sup>136</sup> Photographs removed to box 91, envelopes 51-56.

<sup>137</sup> Photograph removed to box 91, envelope 57.

<sup>138</sup> Photograph removed to box 91, envelope 58.

<sup>139</sup> Items removed from box 66, folder 9 titled "1924, Part 4 (August)"; from box 67, folder 1 titled "1924, Part 5 (August-September)"; and from box 67, folder 3 titled "1927, Part 7 (unsorted)."

	<b>Box</b>	<b>Folder</b>
1924 (accession LONG-70) [oversize]	86	54
1925, Part 1 (January-February)	67	5
1925, Part 2 (February-May)	67	6
1925, Part 3 (May-June)	67	7
1925, Part 4 (July-August)	67	8
1925, Part 5 (August)	67	9
1925, Part 6 (September)	68	1
1925, Part 7 (September-October)	68	2
1925, Part 8 (October-December)	68	3
1925, Part 9 (December and unsorted)	68	4
1925, Part 10 (unsorted) <sup>141</sup>	68	5
1925, Part 11 (unsorted)	68	6
1925 [oversize] <sup>142</sup>	86	55
1925 [oversize flat] <sup>143</sup>	88	31
1925 (accession LONG-70)	68	7
1926, Part 1 (January-February)	68	8
1926, Part 2 (February-March)	68	9
1926, Part 3 (March)	69	1
1926, Part 4 (April-May)	69	2
1926, Part 5 (May-June)	69	3
1926, Part 6 (June-August)	69	4
1926, Part 7 (August-October)	69	5
1926, Part 8 (October-November) <sup>144</sup>	69	6
1926, Part 9 (November-December)	69	7
1926, Part 10 (December)	69	8
1926, Part 11 (unsorted) <sup>145</sup>	70	1
1926 [oversize] <sup>146</sup>	86	56
1926 [oversize flat] <sup>147</sup>	88	32
1926 (accession LONG-70) <sup>148</sup>	70	2
1927, Part 1 (January)	70	3
1927, Part 2 (January-March)	70	4
1927, Part 3 (March-April)	70	5

<sup>140</sup> Natural history item removed to box 89, envelope 31.

<sup>141</sup> Photographs removed to box 91, envelopes 59-70.

<sup>142</sup> Items removed from box 68, folder 2 titled "1925, Part 7 (September-October)" and from box 68, folder 3 titled "1925, Part 8 (October-December)."

<sup>143</sup> Items removed from box 68, folder 2 titled "1925, Part 7 (September-October)" and from box 84, folder 5 titled "Unknown dates, Part 45" (this item was misfiled under "unknown dates" and is actually dated 1925).

<sup>144</sup> Photograph removed to box 91, envelope 71.

<sup>145</sup> Photographs removed to box 91, envelopes 72-75.

<sup>146</sup> Item(s) removed from box 68, folder 8 titled "1926, Part 1 (January-February)."

<sup>147</sup> Item(s) removed from box 69, folder 1 titled "1926, Part 3 (March)."

<sup>148</sup> Photograph removed to box 91, envelope 76.

	Box	Folder
1927, Part 4 (April-July)	70	6
1927, Part 5 (July-September)	70	7
1927, Part 6 (September-November)	71	1
1927, Part 7 (November-December)	71	2
1927, Part 8 (December and unsorted) <sup>149</sup>	71	3
1927 [oversize] <sup>150</sup>	86	57
1927 [oversize flat] <sup>151</sup>	88	33
1927 (accession LONG-70), Part 1 <sup>152</sup>	71	4
1927 (accession LONG-70), Part 2	71	5
1927 (accession LONG-70) [oversize] <sup>153</sup>	86	58
1928, Part 1 (January)	71	6
1928, Part 2 (January-March)	71	7
1928, Part 3 (March-April)	72	1
1928, Part 4 (May-July)	72	2
1928, Part 5 (July-September)	72	3
1928, Part 6 (October-December)	72	4
1928, Part 7 (December and unsorted)	72	5
1928, Part 8 (unsorted)	72	6
1928 [oversize] <sup>154</sup>	86	59
1928 [oversize flat] <sup>155</sup>	88	34
1928 (accession LONG-70), Part 1 <sup>156</sup>	72	7
1928 (accession LONG-70), Part 2	73	1
1928 (accession LONG-70) [oversize] <sup>157</sup>	86	60
1928 (accession LONG-70) [oversize flat] <sup>158</sup>	88	35
1929, Part 1 (January-March)	73	2
1929, Part 2 (March-July)	73	3
1929, Part 3 (July-September) <sup>159</sup>	73	4
1929, Part 4 (September-December)	73	5
1929, Part 5 (unsorted)	73	6
1929, Part 6 (unsorted)	73	7

<sup>149</sup> Object removed to chipboard box 20 within box 90. Photograph removed to box 91, envelope 77.

<sup>150</sup> Items removed from box 70, folder 3 titled "1927, Part 1 (January)" and from box 70, folder 6 titled "1927, Part 4 (April-July)."

<sup>151</sup> Item(s) removed from box 71, folder 3 titled "1927, Part 8 (December and unsorted)."

<sup>152</sup> Oversized items removed to box 86, folder 58 and to box 86, folder 60 (this item was misfiled as 1927 and is actually dated 1928). Photographs removed to box 91, envelopes 78-81.

<sup>153</sup> Items removed from box 71, folder 4 titled "1927 (accession LONG-70), Part 1" and box 71, folder 5 titled "1927 (accession LONG-70), Part 2."

<sup>154</sup> Item(s) removed from box 72, folder 6 titled "1928, Part 8 (unsorted)."

<sup>155</sup> Item(s) removed from box 72, folder 1 titled "1928, Part 3 (March-April)."

<sup>156</sup> Photographs removed to box 91, envelopes 82-83.

<sup>157</sup> Items removed from box from box 71, folder 4 titled "1927 (accession LONG-70), Part 1" (this item was misfiled under 1927 but is actually dated 1928) and from box 72, folder 7 titled "1928 (accession LONG-70), Part 1."

<sup>158</sup> Item(s) removed from box 73, folder 1 titled "1928 (accession LONG-70), Part 2."

<sup>159</sup> Photograph removed to box 91, envelope 84.

	Box	Folder
1929 [oversize] <sup>160</sup>	86	61
1929 [oversize flat] <sup>161</sup>	88	36
1929 (accession LONG-70)	73	8
1929 (accession LONG-70) [oversize]	86	62

**1930s**

	Box	Folder
1930, Part 1 (January-February)	74	1
1930, Part 2 (February-May)	74	2
1930, Part 3 (May-June)	74	3
1930, Part 4 (July)	74	4
1930, Part 5 (July)	74	5
1930, Part 6 (July-August) <sup>162</sup>	74	6
1930, Part 7 (August-October) <sup>163</sup>	74	7
1930, Part 8 (October-December)	75	1
1930, Part 9 (December and unsorted)	75	2
1930 [oversize] <sup>164</sup>	86	63
1930 [oversize flat] <sup>165</sup>	88	37
1930 (accession LONG-70)	75	3
1931, Part 1 (January-March, May)	75	4
1931, Part 2 (March-May)	75	5
1931, Part 3 (May-August)	75	6
1931, Part 4 (August-November)	75	7
1931, Part 5 (November-December)	76	1
1931, Part 6 (unsorted)	76	2
1931 [oversize] <sup>166</sup>	86	64
1931 [oversize flat] <sup>167</sup>	88	38
1931 (accession LONG-70)	76	3
1932, Part 1 (January-April)	76	4
1932, Part 2 (April-June)	76	5
1932, Part 3 (June-December)	76	6
1932, Part 4 (unsorted)	76	7
1932, Part 5 (unsorted)	77	1

<sup>160</sup> Items removed from box 73, folder 4 titled "1929, Part 3 (July-September)" and from box 73, folder 6 titled "1929, Part 5 (unsorted)."

<sup>161</sup> Item(s) removed from box 73, folder 6 titled "1929, Part 5 (unsorted)."

<sup>162</sup> Photograph removed to box 91, envelope 85.

<sup>163</sup> Photographs removed to box 91, envelopes 86-87.

<sup>164</sup> Items removed from box 74, folder 1 titled "1930, Part 1 (January-February)" and from box 75, folder 1 titled "1930, Part 8 (October-December)."

<sup>165</sup> Item(s) removed from box 75, folder 1 titled "1930, Part 8 (October-December)."

<sup>166</sup> Items removed from box 75, folder 6 titled "1931, Part 3 (May-August)" and from box 76, folder 2 titled "1931, Part 6 (unsorted)."

<sup>167</sup> Item(s) removed from box 76, folder 2 titled "1931, Part 6 (unsorted)."



	<b>Box</b>	<b>Folder</b>
1932 [oversize] <sup>168</sup>	86	65
1932 [oversize flat] <sup>169</sup>	88	39
1932 (accession LONG-70)	77	2
1932 (accession LONG-70) [oversize]	86	66
1933, Part 1 (January-June)	77	3
1933, Part 2 (June-December)	77	4
1933, Part 3 (unsorted)	77	5
1933 [oversize] <sup>170</sup>	86	67
1933 [oversize flat] <sup>171</sup>	88	40
1933 (accession LONG-70)	77	6
1934, Part 1 (January-May)	77	7
1934, Part 2 (May-December)	77	8
1934, Part 3 (unsorted) <sup>172</sup>	77	9
1934, Part 4 (unsorted) <sup>173</sup>	77	10
1934 (accession LONG-70)	77	11
1935	78	1
1935 [oversize]	86	68
1935 (accession LONG-70)	78	2
1936	78	3
1936 (accession LONG-70)	78	4
1937	78	5
1937 (accession LONG-70)	78	6
1938	78	7

<sup>168</sup> Items removed from box 76, folder 4 titled "1931, Part 1 (January-April)" and from box 76, folder 5 titled "1932, Part 2 (April-June)."

<sup>169</sup> Items removed from box 76, folder 6 titled "1932, Part 3 (January-December)" and from box 77, folder 1 titled "1932, Part 5 (unsorted)."

<sup>170</sup> Item(s) removed from box 77, folder 5 titled "1933, Part 3 (unsorted)."

<sup>171</sup> Item(s) removed from box 77 folder 4 titled "1933, Part 2 (June-December)."

<sup>172</sup> Photographs removed to box 91, envelopes 89-92 and to box 92, envelope 4.

<sup>173</sup> Photograph removed to box 92, envelope 5.

**Series II. Correspondence -- Original Bundles<sup>174</sup>****A. Elizabeth Ellery Dana Correspondence**

	<b>Box</b>	<b>Folder</b>
E.E. Dana correspondence to various family members, 1891-1897 (accession LONG-70) <sup>175</sup>	78	8
E. E. Dana correspondence to various people, 1883-1885 (accession LONG-70) <sup>176</sup>	78	9
E. E. Dana correspondence to Mrs. Jared Willson, 1878-1884 (accession LONG-70) <sup>177</sup>	78	10
Letters from Crane, Edna, 1933-1936	78	11
Letters from Mrs. T. Dana Dale, 1913-1922 (accession LONG-70)	78	12
Letters from Ruth Charlotte Dana, 1871-1872 (accession LONG-70)	78	13
Letters from Margaret F. Loring, 1897-1905 (accession LONG-70) <sup>178</sup>	78	14
Letters from Francis Ogden Lyman, 1877-1878 <sup>179</sup>	78	15
Letters from Francis Ogden Lyman and Ruth Charlotte Lyman, 1884-1888 (accession LONG-70) <sup>180</sup>	79	1
Letters from the Lymans, 1878-1903 (accession LONG-70) <sup>181</sup>	79	2

**B. Sarah Watson Dana Correspondence**

	<b>Box</b>	<b>Folder</b>
Letters from Charlotte Dana Lyman and Richard Dana Lyman, 1897-1902 (accession LONG-70) <sup>182</sup>	79	3
Letters from Ruth Charlotte Dana Lyman, 1896-1897 (accession LONG-70) <sup>183</sup>	79	4

<sup>174</sup> All materials in this series are part of accession LONG-1 unless noted as being part of accession LONG-70.

<sup>175</sup> Title taken from a tag found separated from the bundle.

<sup>176</sup> Rough drafts of letters.

<sup>177</sup> Natural history item removed to box 89, envelope 32.

<sup>178</sup> Also included is one letter to SWD.

<sup>179</sup> Object removed to chipboard box 21 within box 90.

<sup>180</sup> Object removed to chipboard box 22 within box 90. Also included is one letter from Richard Dana Lyman.

<sup>181</sup> Ruth Charlotte, Charlotte, and Francis O. Lyman. Object removed to chipboard box 23 within box 90.

<sup>182</sup> Natural history item removed to box 89, envelope 33. Object removed to chipboard box 24 within box 90. Also included is one letter from Francis O. Lyman which was included with letters from his son and daughter.

<sup>183</sup> Object removed to chipboard box 25 within box 90. Also included is one letter from Richard Dana Lyman.

**Series III. Correspondence -- Unknown Dates<sup>184</sup>**

	<b>Box</b>	<b>Folder</b>
Unknown dates, Part 1	79	5
Unknown dates, Part 2	79	6
Unknown dates, Part 3	79	7
Unknown dates, Part 4	79	8
Unknown dates, Part 5	79	9
Unknown dates, Part 6	80	1
Unknown dates, Part 7	80	2
Unknown dates, Part 8	80	3
Unknown dates, Part 9	80	4
Unknown dates, Part 10	80	5
Unknown dates, Part 11	80	6
Unknown dates, Part 12	80	7
Unknown dates, Part 13	80	8
Unknown dates, Part 14	80	9
Unknown dates, Part 15	80	10
Unknown dates, Part 16	81	1
Unknown dates, Part 17	81	2
Unknown dates, Part 18	81	3
Unknown dates, Part 19	81	4
Unknown dates, Part 20 <sup>185</sup>	81	5
Unknown dates, Part 21	81	6
Unknown dates, Part 22	81	7
Unknown dates, Part 23	81	8
Unknown dates, Part 24	81	9
Unknown dates, Part 25	82	1
Unknown dates, Part 26	82	2
Unknown dates, Part 27	82	3
Unknown dates, Part 28	82	4
Unknown dates, Part 29	82	5
Unknown dates, Part 30	82	6
Unknown dates, Part 31	82	7
Unknown dates, Part 32	82	8
Unknown dates, Part 33	83	1
Unknown dates, Part 34	83	2
Unknown dates, Part 35	83	3
Unknown dates, Part 36	83	4
Unknown dates, Part 37	83	5
Unknown dates, Part 38	83	6
Unknown dates, Part 39	83	7

<sup>184</sup> All materials in this series are part of accession LONG-1 unless noted as being part of accession LONG-70.<sup>185</sup> Object removed to chipboard box 26 within box 90.

	Box	Folder
Unknown dates, Part 40	83	8
Unknown dates, Part 41	84	1
Unknown dates, Part 42 <sup>186</sup>	84	2
Unknown dates, Part 43 <sup>187</sup>	84	3
Unknown dates, Part 44	84	4
Unknown dates, Part 45 <sup>188</sup>	84	5
Unknown dates, Part 46	84	6
Unknown dates, Part 47	84	7
Unknown dates, Part 48	84	8
Unknown dates, Part 49 <sup>189</sup>	84	9
Unknown dates [oversize] <sup>190</sup>	86	69
Unknown dates [oversize flat] <sup>191</sup>	88	41
Unknown dates (accession LONG-70), Part 1 <sup>192</sup>	85	1
Unknown dates (accession LONG-70), Part 2 <sup>193</sup>	85	2
Unknown dates (accession LONG-70), Part 3	85	3
Unknown dates (accession LONG-70), Part 4	85	4
Unknown dates (accession LONG-70) [oversize flat] <sup>194</sup>	88	42

<sup>186</sup> Photographs removed to box 91, envelopes 93-94.

<sup>187</sup> Object removed to chipboard box 27 within box 90.

<sup>188</sup> Oversized item(s) removed to box 88, folder 31. (This item was misfiled under "unknown dates" and is actually dated 1925).

<sup>189</sup> Natural history item removed to box 89, envelope 34.

<sup>190</sup> Items removed from box 81, folder 3 titled "Unknown dates, Part 18"; from box 82, folder 7 titled "Unknown dates, Part 31"; from box 83, folder 1 titled "Unknown dates, Part 33"; from box 83, folder 2 titled "Unknown dates, Part 34"; from box 83, folder 4 titled "Unknown dates, Part 36"; and from box 84, folder 7 titled "Unknown dates, Part 47."

<sup>191</sup> Items removed from box 80, folder 5 titled "Unknown dates, Part 10"; from box 80, folder 6 titled "Unknown dates, Part 11"; from box 80, folder 8 titled "Unknown dates, Part 13"; from box 81, folder 7 titled "Unknown dates, Part 22"; from box 83, folder 1 titled "Unknown dates, Part 33"; and from box 83, folder 5 titled "Unknown dates, Part 35."

<sup>192</sup> Photographs removed to box 91, envelopes 95-100.

<sup>193</sup> Photographs removed to box 91, envelope 88 (originally misfiled here, this item was actually dated 1931 [accession LONG-70]) and to box 91, envelopes 101-109.

<sup>194</sup> Item(s) removed from box 85, folder 1 titled "Unknown dates (accession LONG-70), Part 1."

**Series IV. Ephemera<sup>195</sup>****A. Natural History Items**

	<b>Box</b>	<b>Folder</b>
Leaf, pressed <sup>196</sup>	89	1
Leaf, ivy <sup>197</sup> -- from Cloisters of Chester Cathedral	89	2
Jessamine <sup>198</sup> -- from the great gate of Warwick Castle	89	3
Leaves, ivy (4) <sup>199</sup> -- from the wall of [Wisseta?] Church	89	4
Flower, yellow (1) and petals (5) <sup>200</sup>	89	5
Flower, red (1) and numerous petals <sup>201</sup>	89	6
Strands of yellowish hair-like material <sup>202</sup>	89	7
"Sea moss" <sup>203</sup> -- a small piece attached to a 6 cm x 6 cm piece of white paper	89	8
Leaves, red (2) <sup>204</sup> -- one has attached stem	89	9
Flowers, pressed (2) <sup>205</sup> -- one yellow, one pink (the pink flower is attached to a stem with leaves)	89	10
Stems with small green leaves <sup>206</sup>	89	11
Leaves, ivy (2) <sup>207</sup> -- taken from the grave of Richard Henry Dana, Jr. (both have stems attached)	89	12
Leaf, pressed <sup>208</sup> -- long and narrow yellowed leaf with a white string tied around its stem	89	13
Stems (2) <sup>209</sup> -- with small pressed flowers	89	14
Leaves, ivy (2) <sup>210</sup> -- with stems from the grave of Richard Henry Dana, Jr.	89	15

<sup>195</sup> All materials in this series are part of accession LONG-1 unless noted as being part of accession LONG-70.

<sup>196</sup> Enclosed with letter to Mr. Dana from William Henry Wood, 14 July 1853, in box 1, folder 25 titled "1853."

<sup>197</sup> Enclosed in an envelope sent to Elizabeth Ellery Dana (1789-1874) by EED (1846-1939), 4 August 1873, in box 10, folder 1 titled "1873, Part 1 (to E.E.D.)."

<sup>198</sup> Enclosed in an envelope sent to Elizabeth Ellery Dana (1789-1874) by EED (1846-1939), 4 August 1873, in box 10, folder 1 titled "1873, Part 1 (to E.E.D.)."

<sup>199</sup> Enclosed with envelope labeled "for Charlotte from P. Woods" in the handwriting of EED, 23 July 1873, in box 10, folder 3 titled "1873, Part 3 (from E.E.D.)."

<sup>200</sup> Enclosed in envelope addressed to Mr. or Mrs. Richard H. Dana by [EED?], 1 October 1881, in box 15, folder 5 titled "1881, Part 3."

<sup>201</sup> Enclosed in envelope addressed to Mr. or Mrs. Richard H. Dana by [EED?], 1 October 1881, in box 15, folder 5 titled "1881, Part 3."

<sup>202</sup> Enclosed with letter to SWD from EED, 30 July 1881, in box 15, folder 7 titled "1881 (accession LONG-70)."

<sup>203</sup> Enclosed with letter to RCD (1814-1901) from Edith Longfellow Dana, 28 February 1881, in box 16, folder 1 titled "1882, Part 2."

<sup>204</sup> Enclosed with letter to EED from Mary Avery Smith, 12 April 1882, in box 16, folder 5 titled "1882, Part 6."

<sup>205</sup> Enclosed with letter to EED from Mary Avery Smith, 12 April 1882, in box 16, folder 5 titled "1882, Part 6."

<sup>206</sup> Enclosed with letter to EED from Mary Avery Smith, 12 April 1882, in box 16, folder 5 titled "1882, Part 6."

<sup>207</sup> Enclosed with letter to SWD from J. Metcalf, 2 November 1884, in box 18, folder 1 titled "1884, Part 1."

<sup>208</sup> Enclosed with letter to SWD from J. Metcalf, 2 November 1884, in box 18, folder 1 titled "1884, Part 1."

<sup>209</sup> Enclosed with letter to SWD from J. Metcalf, 2 November 1884, in box 18, folder 1 titled "1884, Part 1."

<sup>210</sup> Enclosed with letter to SWD from [M.E. Eustes?], 12 April 1886, in box 20, folder 6 titled "1886 (accession LONG-70), Part 1."

	Box	Folder
Flowers, pressed (several) <sup>211</sup> -- with stems from the grave of Richard Henry Dana, Jr.	89	16
Leaves, ivy, pressed <sup>212</sup>	89	17
Flowers, small, pressed (several) <sup>213</sup> -- with stems and one stem without an attached flower	89	18
Leaf <sup>214</sup> -- from the grave of Richard Henry Dana, Jr.	89	19
Flowers, small, pressed (4) <sup>215</sup> -- from the grave of Richard Henry Dana, Jr.	89	20
Flowers, pressed <sup>216</sup>	89	21
Flowers, pressed <sup>217</sup>	89	22
Flowers, pressed <sup>218</sup>	89	23
Flowers, pressed <sup>219</sup>	89	24
Pansies, pressed (several) <sup>220</sup>	89	25
Flowers, pressed <sup>221</sup>	89	26
Flower, pressed and leaves <sup>222</sup> -- from a mountain laurel bush	89	27
Leaves, ivy, pressed (5) <sup>223</sup> -- two on one stem; from the grave of Richard Henry Dana, Jr.	89	28
Leaf, ivy, pressed <sup>224</sup> -- from the grave of Richard Henry Dana, Jr.	89	29
Daisy, pressed <sup>225</sup> -- from the grave of Richard Henry Dana, Jr.	89	30
Flower and leaves, pressed <sup>226</sup>	89	31

<sup>211</sup> Enclosed with letter to SWD from [M.E. Eustes?], 12 April 1886, in box 20, folder 6 titled "1886 (accession LONG-70), Part 1."

<sup>212</sup> Enclosed in envelope with card to SWD from Gerhard Gade (U.S. Consul, Rome), 25 April 1889, in box 23, folder 4 titled "1889, Part 8."

<sup>213</sup> Enclosed with letter to SWD from RCDL, 22 March 1894, in box 28, folder 1 titled "1894, Part 1."

<sup>214</sup> Enclosed with letter to SWD from Ella C. Eustis, 5 May 1895, in box 30, folder 2 titled "1895 (accession LONG-70), Part 1."

<sup>215</sup> Enclosed with letter to SWD from Ella C. Eustis, 5 May 1895, in box 30, folder 2 titled "1895 (accession LONG-70), Part 1."

<sup>216</sup> Enclosed with letters to SWD from Walter S. Swayne, 18 October 1898, in box 32, folder 7 titled "1898, Part 1."

<sup>217</sup> Enclosed with letters to SWD from Walter S. Swayne, 18 October 1898, in box 32, folder 7 titled "1898, Part 1."

<sup>218</sup> Enclosed with letters to SWD from Charlotte Dana Lyman, 22 October and 8 November 1900 (in same envelope), in box 37, folder 2 titled "1900 (accession LONG-70), Part 1."

<sup>219</sup> Enclosed with letters to SWD from Charlotte Dana Lyman, 22 October and 8 November 1900 (in same envelope), in box 37, folder 2 titled "1900 (accession LONG-70), Part 1."

<sup>220</sup> Enclosed with letter to EED from Francis O. Lyman, 3 May 1904, in box 43, folder 10 titled "1904 (accession LONG-70), Part 2."

<sup>221</sup> Enclosed with letter to SWD from Richard Henry Dana III, 19 May 1906, in box 45, folder 6 titled "1906, Part 3."

<sup>222</sup> Enclosed with letter to EED from Francis O. Lyman, 6 July 1907, in box 46, folder 6 titled "1907, Part 5."

<sup>223</sup> Enclosed with letter to EED from Lucy Conant, 1 November 1909, in box 48, folder 3 titled "1909, Part 1."

<sup>224</sup> Enclosed with letter to EED from Emma Gertrude Wheeler, 1 February 1922, in box 64, folder 3 titled "1922, Part 6."

<sup>225</sup> Enclosed with letter to EED from Emma Gertrude Wheeler, 1 February 1922, in box 64, folder 3 titled "1922, Part 6."

<sup>226</sup> Enclosed with letter to EED from Katherine Sears Jackman, 3 October 1924, in box 67, folder 4 titled "1924 (accession LONG-70)."

	Box	Folder
Heather, pressed, with stems <sup>227</sup>	89	32
Flowers and leaves, pressed <sup>228</sup>	89	33
Feathers, narrow, white (several) <sup>229</sup>	89	34

**B. Objects**

	Box	Tray
Ribbon, <sup>230</sup> 4.25 cm wide and 14.0 cm long -- with a tassel, approx. 4.0 cm long at the bottom; ribbon is white with yellow edging and a white, purple, red, green, and blue design; tassel is blue	90	1
Netting <sup>231</sup> -- black; with heavy black stripes	90	2
Fabric <sup>232</sup> -- round, yellow, backed by white fabric which surrounds it and hangs down in a "flower-and-stem"-like fashion	90	3
String <sup>233</sup> -- red	90	4
Human hair <sup>234</sup> -- several strands of blonde hair wrapped in a small piece of white paper on which is handwritten "Little Charlotte / Dec. 20th 86"	90	5
Human hair <sup>235</sup> -- large lock of blonde hair wrapped in a piece of white paper on which is handwritten "Richard Dana Lyman/Hair cut Aug 1890 / Age 2(1/2) years"	90	6
Paint sample, <sup>236</sup> 4.5 x 6.5 cm piece of white paper -- partially covered on both sides with sky blue paint (faded on one side, with small spots of dark blue and yellow paint visible)	90	7a
Upholstery fabric <sup>237</sup> -- cut in a roughly triangular shape; two layers of fabric, one beige with green, red and brown floral patterns, the other showing reddish and yellowish coloring	90	7b
Fabric strips (4) <sup>238</sup> -- various colors	90	8

<sup>227</sup> Enclosed with letter to EED from Mary Willson, 1 September 1879, in box 78, folder 10 titled "Elizabeth Ellery Dana correspondence to Mrs. Jared Willson, 1878-1884 (accession LONG-70)."

<sup>228</sup> Enclosed with letter to SWD from Francis O. Lyman, 3 December 1899, in box 79, folder 3 titled "Letters from Charlotte Dana Lyman and Richard Dana Lyman, 1897-1902 (accession LONG-70)."

<sup>229</sup> Enclosed with envelope addressed to RCD, date unknown, in box 84, folder 9 titled "Unknown dates, Part 49."

<sup>230</sup> Enclosed with letter to [Richard Henry Dana, Sr. ?] from Mr. and Mrs. Wood, 31 October, 1872, in box 9, folder 7 titled "1872, Part 8 (letters neither by nor to E.E.D.)."

<sup>231</sup> Enclosed with letter to Sarah Watson Dana [Swayne] from EED, 8 May 1876, in box 12, folder 5 titled "1876, Part 3 (from E.E.D.)."

<sup>232</sup> Enclosed with letter to Mary Willson from EED, 23 October 1881, in box 15, folder 4 titled "1881, Part 2."

<sup>233</sup> Enclosed with a wedding invitation for the marriage of Elizabeth Stokes and D. Edoardo Loduini, in Italian, addressed to Mrs. Richard Dana and family, 30 June 1884, in box 18, folder 4 titled "1884, Part 4."

<sup>234</sup> Enclosed with letter to SWD from Charlotte Dana Lyman, 20 December 1886, in box 20, folder 6 titled "1886 (accession LONG-70), Part 1."

<sup>235</sup> Enclosed in envelope labeled "R.D. Lyman's hair at 2 years old" in EED's handwriting, in box 24, folder 5 titled "1890 (accession LONG-70)."

<sup>236</sup> Enclosed with a letter to SWD from AHCDS, 21 January 1873, in box 27, folder 5 titled "1893, Part 5."

<sup>237</sup> Enclosed with a letter to SWD from AHCDS, 21 January 1873, in box 27, folder 5 titled "1893, Part 5."

<sup>238</sup> Enclosed with letter to SWD from Charlotte Dana Lyman, 28 April 1895, in box 29, folder 3 titled "1895, Part 1."

	Box	Tray
Fabric, <sup>239</sup> 5.25 x 5.25 cm -- corded, orange and black stripes	90	9
Fabric, <sup>240</sup> 9.5 cm long -- pink, narrow strip	90	10
Ribbon <sup>241</sup> -- red; tied in a bow	90	11
Bag <sup>242</sup> -- small, made of white fabric with a floral design and a pink drawstring at the opening	90	12
Scapular <sup>243</sup> -- two religious cards, held in white linen bags, have linen sewn to their edges (one brown, the other red) and are connected by two long straps of white linen	90	13
Bag <sup>244</sup> -- small, made of white fabric with a red polka-dot design and a red drawstring at the opening	90	14
Cloth samples (3) <sup>245</sup> -- bookbinder's; various colors	90	15
Samples (2) <sup>246</sup> -- of "5/4 D.T. Linen Drab Duck"	90	16
Ribbon <sup>247</sup> -- gold	90	17
String <sup>248</sup> -- white	90	18
Ribbon <sup>249</sup> -- blue	90	19
Ribbon <sup>250</sup> -- small, yellow	90	20
String <sup>251</sup> -- brown and white	90	21
Fabric samples (3) <sup>252</sup> -- various shades of red	90	22
String <sup>253</sup> -- brown and white; longer than the one in chipboard box	90	23
21		

<sup>239</sup> Enclosed with letter to EED from T.A. Moore, a corset maker, 20 February 1897, in box 31, folder 6 titled "1897, Part 3."

<sup>240</sup> Enclosed with letter to EED from Charlotte Dana Lyman, 13 October 1900, in box 36, folder 5 titled "1900, Part 7."

<sup>241</sup> Found tied around an original EED bundle of letters, with a scrap of paper pinned to it, in box 37, folder 2 titled "1900 (accession LONG-70), Part 1."

<sup>242</sup> Enclosed with an invitation sent to EED from St. Monica's Home for Sick Colored Women and Children, 23 April 1904, in box 42, folder 8 titled "1904, Part 2."

<sup>243</sup> Enclosed with letter to EED from AHCDS, 28 March 1904, in box 42, folder 9 titled "1904, Part 3."

<sup>244</sup> Enclosed with an invitation sent to EED from St. Monica's Home for Sick Colored Women and Children, 8 June 1905, in box 44, folder 2 titled "1905, Part 2."

<sup>245</sup> Enclosed with letter to EED from White, Son and Company, Incorporated, 8 May 1909, in box 49, folder 1 titled "1909, Part 8."

<sup>246</sup> Enclosed with letter to EED from White, Son and Company, Incorporated, 15 May 1909, in box 49, folder 1 titled "1909, Part 8."

<sup>247</sup> Enclosed with letter to EED from Charlotte Dana Lyman, 27 September 1912, in box 53, folder 5 titled "1912 (accession LONG-70)."

<sup>248</sup> Tied around an envelope with enclosed letter to EED from Mrs. Louis Prang, 20 May 1920, in box 62, folder 1 titled "1920, Part 8."

<sup>249</sup> Attached to an envelope with letter enclosed to EED from George S. Stewart, 10 May 1920, in box 62, folder 2 titled "1920 (accession LONG-70)."

<sup>250</sup> Tied to a birthday card sent to EED from AHCDS, 31 March 1927, in box 71, folder 3 titled "1927, Part 8 (December and unsorted)."

<sup>251</sup> Tied around a bundle of envelopes with an attached tag reading "E.E.D. from FOL," in box 78, folder 15 titled "Letters from Francis Ogden Lyman, 1877-1878."

<sup>252</sup> Enclosed with letter to EED from RCDL, 15 December 1886, in box 79, folder 1 titled "Letters from Francis Ogden Lyman and Ruth Charlotte Lyman, 1884-1888 (accession LONG-70)."



---

	<b>Box</b>	<b>Tray</b>
String <sup>254</sup> -- pink	90	24
Ribbon <sup>255</sup> -- blue	90	25
Needlework, cream <sup>256</sup>	90	26
Button <sup>257</sup> -- small, round, white, with four holes for sewing	90	27

---

---

<sup>253</sup> Tied around a bundle of letters with a tag labeled "Lily from Lymans," box 79, folder 2 titled "Letters from the Lymans, 1878-1903 (accession LONG-70)."

<sup>254</sup> Tied around a bundle of letters, with a tag reading "to S.W.D. from C & D Lyman," in box 79, folder 3 titled "Letters from Charlotte Dana Lyman and Richard Dana Lyman, 1897-1902 (accession LONG-70)."

<sup>255</sup> Tied around a bundle of letters to SWD, in box 79, folder 4 titled "Letters from RCDL, 1896-1897 (accession LONG-70)."

<sup>256</sup> Needlework by Sallie Dana when she was 16 or 17. Found in small labeled envelope, in box 81, folder 5 titled "Unknown dates, Part 20."

<sup>257</sup> Enclosed with letter to SWD from S.L. Dana, 10 July (year unknown), in box 84, folder 3 titled "Unknown dates, Part 43."

## **PART 4:**

### **COLLECTION LISTING, SUBCOLLECTION II. PHOTOGRAPHS (3003.002)**

#### **Photographs Not in Albums (3003.002/001)**

Photographs are stored with other photographs related to the Dana family in three containers:

- D5: Dana Photographs Box 5 (4" x 5" box)
- D6: Dana Photographs Box 6 (5" x 7" box)
- D8: Dana Photographs Box 8 (5" x 7" Negatives)

<b>Item #</b>	<b>Item</b>	<b>Box</b>	<b>Env.</b>
001	Carte-de-visite, 1867 <sup>258</sup> 6.5 x 10.5 cm -- portrait of Mrs. Wood; subject is standing sideways and is resting her hands on a desk; J. Laing, Castle St., Shrewsbury, photographer	D5	1
002	Carte-de-visite, 1867 <sup>259</sup> 6.5 x 10.5 cm -- portrait of Mr. Wood; subject is resting one hand on a desk and is holding a top hat in the other; J. Laing, Castle St., Shrewsbury, photographer	D5	2
003	Carte-de-visite, 1867 <sup>260</sup> 6.5 x 10.5 cm -- portrait of E.T. Carrington; visible area of print is confined to a small oval area at center; Bishop, Bay City, Michigan, photographer	D5	3
004	Albumen print, 1873 <sup>261</sup> 9.5 x 12 cm -- interior of Santa Maria Maggiore, Rome	D5	4
005	Carte-de-visite, albumen print, 1880 <sup>262</sup> 6.5 x 10.5 cm -- portrait of Henry Watson, Jr.; subject is approximately seventeen months old and is seated in a small chair; Knowlton Bros., Northampton, Massachusetts, photographers	D5	5
006	Carte-de-visite, albumen print, 1887 <sup>263</sup> 6.5 x 10.5 cm -- portrait of Eline [ <i>sic</i> ] M. Judkins; visible area of print is confined to an oval area at center	D5	6

<sup>258</sup> Enclosed with letter to Richard Henry Dana from Mr. and Mrs. Wood, 11 December 1867, in box 5, folder 9 titled "1867, Part 3."

<sup>259</sup> Enclosed with letter to Richard Henry Dana from Mr. and Mrs. Wood, 11 December 1867, in box 5, folder 9 titled "1867, Part 3."

<sup>260</sup> Enclosed with letter to Ruth Charlotte Dana [Lyman?] from E.T. Carrington, 4 September 1867, in box 5, folder 9 titled "1867, Part 3."

<sup>261</sup> Enclosed in letter to RCD from EED, 25 December 1873, in box 10, folder 3 titled "1873, Part 3 (from E.E.D.)."

<sup>262</sup> Enclosed with letter to EED from Julia Watson, 17 October 1880, in box 15, folder 1 titled "1880, Part 5."

<sup>263</sup> Enclosed with letter to RCD from Francis O. Lyman, 1 April 1887, in box 21, folder 6 titled "1887 (accession LONG-70), Part 1."

Item #	Item	Box	Env.
007	Carte-de-visite, albumen print, 1890 <sup>264</sup> 6.5 x 10.5 cm -- portrait of H.T. Parker; visible area of print is confined to an oval area at center; Lambert, Weston & Son, photographers	D5	7
008	Cyanotype, 1900 <sup>265</sup> 9.0 x 9.0 cm -- group portrait of Charlotte Dana Lyman (standing), Francis Ogden Lyman, and Ruth Charlotte Dana Lyman (seated); subjects are in front of a small garden by a house	D5	8
009	Cyanotype, 1900 <sup>266</sup> 9.0 x 9.0 cm -- group portrait of Richard Dana Lyman, Charlotte Dana Lyman, and Frances Ogden Lyman (left to right)	D5	9
010	Cyanotype, 1900 <sup>267</sup> 9.0 x 9.0 cm -- Lake Michigan; view from shore, plant visible at lower right	D5	10
011	Cyanotype, 1900 <sup>268</sup> 9.0 x 9.0 cm -- portrait of Charlotte Dana Lyman	D5	11
012	Cyanotype, 1900 <sup>269</sup> 9.0 x 9.0 cm -- group portrait of Richard Dana Lyman, Charlotte Dana Lyman, and Frances Ogden Lyman (left to right)	D5	12
013	Cyanotype, 1900 <sup>270</sup> 7.5 x 8.5 cm -- portrait of Charlotte Dana Lyman	D5	13
014	Cyanotype, 1900 <sup>271</sup> 7.5 x 8.0 cm -- portrait of Richard Dana Lyman	D5	14
015	Cyanotype, 1900 <sup>272</sup> 8.25 x 8.75 cm -- portrait of Richard Dana Lyman	D5	15
016	Photograph, 1902 <sup>273</sup> 6.25 x 9.25 cm -- black and white; profile, Sarah Watson Dana; subject is seated in a wheelchair and is wearing a hat	D5	16

<sup>264</sup> Enclosed with letter to EED from Lucy Parker, 28 September 1890, in box 23, folder 6 titled "1890, Part 1."

<sup>265</sup> Enclosed with letters to EED from Richard Dana Lyman and to SWD from Charlotte Dana Lyman (sent in same envelope), 26 August and 23 July 1900, in box 36, folder 3 titled "1900, Part 5."

<sup>266</sup> Enclosed with letters to EED from Richard Dana Lyman and to SWD from Charlotte Dana Lyman (sent in same envelope), 26 August and 23 July 1900, in box 36, folder 3 titled "1900, Part 5."

<sup>267</sup> Enclosed with letters to EED from Richard Dana Lyman and to SWD from Charlotte Dana Lyman (sent in same envelope), 26 August and 23 July 1900, in box 36, folder 3 titled "1900, Part 5."

<sup>268</sup> Enclosed with letter to SWD from RCDL, 27 November 1900, in box 37, folder 2 titled "1900 (accession LONG-70), Part 1."

<sup>269</sup> Items in Envelopes 12-15 were enclosed with letter to SWD from RCDL, 13 September 1900, in box 37, folder 2 titled "1900 (accession LONG-70), Part 1."

<sup>270</sup> Items in Envelopes 12-15 were enclosed with letter to SWD from RCDL, 13 September 1900, in box 37, folder 2 titled "1900 (accession LONG-70), Part 1."

<sup>271</sup> Items in Envelopes 12-15 were enclosed with letter to SWD from RCDL, 13 September 1900, in box 37, folder 2 titled "1900 (accession LONG-70), Part 1."

<sup>272</sup> Items in Envelopes 12-15 were enclosed with letter to SWD from RCDL, 13 September 1900, in box 37, folder 2 titled "1900 (accession LONG-70), Part 1."

<sup>273</sup> Enclosed with letter to EED from EED, 30 June 1902, in box 40, folder 5 titled "1902, Part 10."

Item #	Item	Box	Env.
017	Photograph, 1902 <sup>274</sup> 6.25 x 9.25 cm -- black and white; profile of Sarah Watson Dana; subject is seated in a wheelchair and is not wearing a hat	D5	17
018	Photograph, 1902 <sup>275</sup> 6.25 x 9.25 cm -- black and white; profile of Sarah Watson Dana; subject is seated in a wheelchair; Elizabeth Ellery Dana is partially visible at left	D5	18
019	Photograph, 1902 <sup>276</sup> 6.25 x 9.25 cm -- black and white -- group profile of Elizabeth Ellery Dana and Sarah Watson Dana; Elizabeth Ellery Dana is pushing Sarah Watson Dana in a wheelchair	D5	19
020	Photograph, 1904 <sup>277</sup> 9.0 x 9.0 cm -- black and white; a child climbing a wooden fence situated on top of a wooden platform; plants visible in foreground and background	D5	20
021	Photograph, 1904 <sup>278</sup> 5.0 x 7.25 cm -- "Carla" and Richard Dana Lyman; -- completely silvered	D5	21
022	Photograph, 1904 <sup>279</sup> 5.0 x 7.25 cm -- "Carla" and Richard Dana Lyman; -- completely silvered	D5	22
023	Postcard, photographic, 1905 <sup>280</sup> 9.0 x 13.5 cm -- picture of "The Big Elm" tree in Lancaster, Massachusetts	D5	23
024	Postcard, photographic, 1905 <sup>281</sup> 8.25 x 14.0 cm -- landscape with building at St. Paul's School in Concord, NH; photographic portion is a circular photo on the note side of the card	D5	24
025	Postcard, photographic, 1906 <sup>282</sup> 9.0 x 14.0 cm -- landscape with buildings and a castle	D5	25
026	Postcard, photographic, 1906 <sup>283</sup> 9.0 x 13.5 cm -- water and islands in Belle Isle Park, Detroit; photographic portion is an oval shape on the note side of the card	D5	26

<sup>274</sup> Enclosed with letter to EED from EED, 30 June 1902, in box 40, folder 5 titled "1902, Part 10."

<sup>275</sup> Enclosed with letter to EED from EED, 30 June 1902, in box 40, folder 5 titled "1902, Part 10."

<sup>276</sup> Enclosed with letter to EED from EED, 30 June 1902, in box 40, folder 5 titled "1902, Part 10."

<sup>277</sup> Enclosed with letter to EED from AHCDS, 2 October 1904, in box 42, folder 7 titled "1904, Part 1."

<sup>278</sup> Enclosed with letter to EED from Isabella Hazen Dana, 7 September 1904, in box 43, folder 5 titled "1904, Part 8." Subjects cannot be seen clearly.

<sup>279</sup> Enclosed with letter to EED from Isabella Hazen Dana, 7 September 1904, in box 43, folder 5 titled "1904, Part 8." Subjects cannot be seen clearly.

<sup>280</sup> Postcard sent to EED by "S.W.," July 1905. Originally filed in box 44, folder 6 titled "1905, Part 6."

<sup>281</sup> Postcard sent to SWD by Richard Dana Lyman, 6 May 1905. Originally filed in box 45, folder 2 titled "1905 (accession LONG-70), Part 1."

<sup>282</sup> Postcard sent to EED from Rosamund Dana Wild, 17 September 1906. Originally filed in box 46, folder 1 titled "1906 (accession LONG-70)."

<sup>283</sup> Postcard sent to EED from AHCDS, 14 July 1906. Originally filed in box 46, folder 1 titled "1906 (accession LONG-70)."

Item #	Item	Box	Env.
027	Postcard, photographic, 1906 <sup>284</sup> 9.0 x 13.5 cm -- landscape, Belle Isle Park, Detroit; photographic portion is an oval shape on the note side of the card	D5	27
028	Postcard, photographic, 1907 <sup>285</sup> 9.0 x 14.0 cm -- building atop a rock formation near a shoreline; other buildings in background; identified as "Headland House Sanatorium"	D5	28
029	Postcard, photographic, 1907 <sup>286</sup> 8.5 x 14.0 cm -- a campsite along a shoreline; tents on land, canoes in water	D5	29
030	Postcard, photographic, 1909 <sup>287</sup> 9.0 x 14.0 cm -- exterior of Christ Church in Pelham Manor, New York	D5	30
031	Photograph, 1911 <sup>288</sup> 8.5 x 10.25 cm -- black and white; exterior of two buildings at the University of the South	D5	31
032	Photograph, 1911 <sup>289</sup> 8.5 x 10.25 cm -- black and white; landscape with building at the University of the South	D5	32
033	Photograph, 1912 <sup>290</sup> 8.0 x 8.75 cm -- black and white; group portrait of Susan Scoggin holding four-and-a-half-month-old Helen E. Scoggin	D5	33
034	Postcard, photographic, 1915 <sup>291</sup> 9.0 x 14.0 cm -- landscape with buildings; view of Court Street in Woodville, New Hampshire	D5	34
035	Postcard, photographic, 1916 <sup>292</sup> 8.75 x 13.75 cm -- Hiram Falls in Maine	D5	35
036	Postcard, photographic, 1916 <sup>293</sup> 9.0 x 13.75 cm -- "1916 May Pole Fete" at "U. of I."; photograph shows several women dancing	D5	36
037	Photograph, 1917 <sup>294</sup> 5.5 x 8.0 cm -- black and white; Eleanora and Henrietta Skinner at a beach with Sligo the dog	D5	37

<sup>284</sup> Postcard sent to EED by AHCDS, 11 August 1906. Originally filed in box 46, folder 1 titled "1906 (accession LONG-70)."

<sup>285</sup> Postcard sent to EED by AHCDS, 5 August 1907. Originally filed in box 46, folder 4 titled "1907, Part 3."

<sup>286</sup> Postcard sent to EED by Richard Dana Lyman, 11 July 1907. Originally filed in box 46, folder 7 titled "1907 (accession LONG-70), Part 1."

<sup>287</sup> Postcard sent to EED from "Stella," 27 October 1909. Originally filed in box 49, folder 4 titled "1909 (accession LONG-70), Part 2."

<sup>288</sup> Enclosed with letter to EED from Stuart L. Tyson from the University of the South, 13 May 1911, in box 51, folder 2 titled "1911, Part 3."

<sup>289</sup> Enclosed with letter to EED from Stuart L. Tyson from the University of the South, 13 May 1911, in box 51, folder 2 titled "1911, Part 3."

<sup>290</sup> Enclosed with letter to EED from Susan Scoggin, 5 January 1912, in box 53, folder 5 titled "1912 (accession LONG-70)."

<sup>291</sup> Postcard sent to EED from "E.B.K.," 11 August 1915. Originally filed in box 56, folder 4 titled "1915, Part 7."

<sup>292</sup> Postcard sent to EED from "C.W.K.," 3 August 1916. Originally filed in box 57, folder 6 titled "1916, Part 7."

<sup>293</sup> Postcard sent to EED by Richard Dana Lyman, 18 May 1925. Originally filed in box 58, folder 1 titled "1916 (accession LONG-70)."

Item #	Item	Box	Env.
038	Photograph, 1917 <sup>295</sup> 6.25 x 6.25 cm -- black and white; portrait of Francis Hazen Dana; subject is a young child and is being held up by someone unseen on camera	D5	38
039	Postcard, photographic, 1918 <sup>296</sup> 8.75 x 14.0 cm -- landscape featuring the Bouhegan River in Milford, New Hampshire	D5	39
040	Postcard, photographic, 1918 <sup>297</sup> 9.0 x 14.0 cm -- apartment buildings; several windows in the apartment buildings are marked with an "X"; a large portion of the card is torn off	D5	40
041	Photograph, 1918 <sup>298</sup> 9.0 x 14.5 cm -- black and white; parade float; shows a float moving down a parade route; members of "The Bee" ride in the back of a truck	D5	41
042	Photograph, 1918 <sup>299</sup> 6.5 x 10.5 cm -- black and white; parade float; members of "The Bee" ride in the back of a truck; a man is standing behind the truck	D5	42
043	Photograph, 1918 <sup>300</sup> 6.5 x 10.5 cm -- black and white; parade float; members of "The Bee" ride in the back of a truck	D5	43
044	Photograph, 1918 <sup>301</sup> 6.5 x 10.5 cm -- black and white; parade float; members of "The Bee" ride in the back of a truck	D5	44
045	Photograph, 1918 <sup>302</sup> 6.5 x 10.5 cm -- black and white; parade float; members of "The Bee" ride in the back of a truck; a man is standing behind the truck	D5	45
046	Postcard, photographic, 1918 <sup>303</sup> 8.75 x 14.0 cm -- Eagle Cliff rising above a body of water in Ephraim, Wisconsin	D5	46
047	Postcard, photographic, 1919 <sup>304</sup> 8.5 x 13.5 cm -- landscape of "Ledges Pemaquid Point," a rocky shoreline with trees in the background	D5	47

<sup>294</sup> Enclosed with letter to EED from Margaret H. Skinner, 16 August 1917, in box 58, folder 5 titled "1917, Part 4."

<sup>295</sup> Enclosed with letter to EED from Francis Dana, 14 January 1917, in box 58, folder 6 titled "1917, Part 5."

<sup>296</sup> Postcard sent to EED from "E.B.K.," 9 August 1918. Originally filed in box 58, folder 7 titled "1917, Part 6."

<sup>297</sup> Postcard sent to EED, sender unknown, 26 June 1918. Originally filed in box 59, folder 2 titled "1918, Part 1."

<sup>298</sup> Returned to EED by Isabella Hazen Dana, 17 December 1918. Originally filed in box 59, folder 8 titled "1918, Part 7."

<sup>299</sup> Returned to EED by Isabella Hazen Dana, 17 December 1918. Originally filed in box 59, folder 8 titled "1918, Part 7."

<sup>300</sup> Returned to EED by Isabella Hazen Dana, 17 December 1918. Originally filed in box 59, folder 8 titled "1918, Part 7."

<sup>301</sup> Enclosed in an envelope addressed to EED, in box 59, folder 8 titled "1918, Part 7."

<sup>302</sup> Enclosed in an envelope addressed to EED, in box 59, folder 8 titled "1918, Part 7."

<sup>303</sup> Postcard sent to EED from Charlotte Dana Lyman, 31 August 1918. Originally filed in box 60, folder 1 titled "1918 (accession LONG-70)."

Item #	Item	Box	Env.
048	Postcard, photographic, 1922 <sup>305</sup> 8.75 x 14.0 cm -- maritime scene of "Yacht Race off the Light, Annisquam, Cape Ann, Mass."	D5	48
049	Photograph, 1922 <sup>306</sup> 7.0 x 11.5 cm -- black and white; landscape with a building; labeled "Glen Ola"	D5	49
050	Photograph, 1922 <sup>307</sup> 7.0 x 11.0 cm -- black and white; group portrait of Emily Orwig Lyman and Richard Dana Lyman	D5	50
051	Photograph, 1923 <sup>308</sup> 9.5 x 9.5 cm -- black and white; landscape showing a garden in front of a house in San Diego, CA	D5	51
052	Photograph, 1923 <sup>309</sup> 6.5 x 11.25 cm -- black and white; landscape taken from a patio in San Diego, CA	D5	52
053	Photograph, 1923 <sup>310</sup> 6.5 x 11.25 cm -- black and white; landscape taken through an arch of plants rising above a walkway; San Diego, CA	D5	53
054	Photograph, 1923 <sup>311</sup> 6.5 x 11.25 cm -- black and white; landscape; Mission Valley, San Diego, CA	D5	54
055	Photograph, 1923 <sup>312</sup> 8.75 x 9.5 cm -- black and white; a woman standing in a garden which has a miniature pond	D5	55
056	Photograph, 1923 <sup>313</sup> 6.5 x 11.25 cm -- black and white; a house viewed from a street; San Diego, CA	D5	56
057	Postcard, photographic, 1924 <sup>314</sup> 8.5 x 13.75 cm -- a house viewed from a street; labeled on reverse "Miss Perry's house in Bristol, R.I."	D5	57

<sup>304</sup> Postcard sent to EED by M.B. MacDonald, 28 July 1919. Originally filed in box 61, folder 2 titled "1919 (accession LONG-70)."

<sup>305</sup> Postcard sent to "Miss Dana" from "Louise R. C.," 25 July 1922. Originally filed in box 64, folder 7 titled "1922, Part 10."

<sup>306</sup> Enclosed with letter to EED from Elmer E. Dana, 30 January 1922, in box 65, folder 1 titled "1922, Part 12." "Glen Ola" is Elmer Dana's residence.

<sup>307</sup> Enclosed with letter to EED from Emily Orwig Lyman, 24 May 1922, in box 65, folder 2 titled "1922, Part 13." Also included was the photograph in box 92, envelope 3.

<sup>308</sup> Enclosed with letter to EED from Mrs. Herbert S. Evans, 20 October 1923, in box 66, folder 3 titled "1923, Part 9."

<sup>309</sup> Enclosed with letter to EED from Mrs. Herbert S. Evans, 20 October 1923, in box 66, folder 3 titled "1923, Part 9."

<sup>310</sup> Enclosed with letter to EED from Mrs. Herbert S. Evans, 20 October 1923, in box 66, folder 3 titled "1923, Part 9."

<sup>311</sup> Enclosed with letter to EED from Mrs. Herbert S. Evans, 20 October 1923, in box 66, folder 3 titled "1923, Part 9."

<sup>312</sup> Enclosed with letter to EED from Mrs. Herbert S. Evans, 20 October 1923, in box 66, folder 3 titled "1923, Part 9."

<sup>313</sup> Enclosed with letter to EED from Mrs. Herbert S. Evans, 20 October 1923, in box 66, folder 3 titled "1923, Part 9."

Item #	Item	Box	Env.
058	Photograph, 1924 <sup>315</sup> 8.5 x 11.0 cm -- black and white; group portrait of Ernest Russell Willson family (Mr. and Mrs. Willson and three children)	D5	58
059	Photograph, 1925 <sup>316</sup> 6.0 x 9.0 cm -- black and white; portrait of Katherine Ellery Lyman; subject is holding on to the handle of what appears to be a stroller	D5	59
060	Photograph, 1925 <sup>317</sup> 6.0 x 9.0 cm -- black and white; Katherine Ellery Lyman kneeling outside a sandbox and playing with something within	D5	60
061	Photograph, 1925 <sup>318</sup> 6.0 x 9.0 cm -- black and white; portrait of Katherine Ellery Lyman; subject is standing near a house	D5	61
062	Photograph, 1925 <sup>319</sup> 6.0 x 9.0 cm -- black and white; group portrait of Katherine Ellery Lyman and Emily Orwig Lyman (left to right)	D5	62
063	Photograph, 1925 <sup>320</sup> 6.0 x 9.0 cm -- black and white; portrait of Katherine Ellery Lyman; subject is sitting behind a jack-o-lantern	D5	63
064	Photograph, 1925 <sup>321</sup> 6.0 x 9.0 cm -- black and white; group portrait of Richard Dana Lyman holding Katherine Ellery Lyman	D5	64
065	Photograph, 1925 <sup>322</sup> 6.0 x 9.0 cm -- black and white; group portrait of Emily Orwig Lyman holding Katherine Ellery Lyman	D5	65
066	Photograph, 1925 <sup>323</sup> 6.0 x 9.0 cm -- black and white; portrait of Katherine Ellery Lyman; subject is sitting behind a jack-o-lantern	D5	66

<sup>314</sup> Originally filed in box 66, folder 6 titled "1924, Part 1 (January-March)."

<sup>315</sup> Enclosed with letter to EED from Ernest Russell Willson, 20 July 1924, in box 66, folder 8 titled "1924, Part 3 (July-August)."

<sup>316</sup> Enclosed with letter to EED from Richard Dana Lyman, 5 July 1925, in box 68, folder 5 titled "1925, Part 10 (unsorted)."

<sup>317</sup> Enclosed with letter to EED from Richard Dana Lyman, 5 July 1925, in box 68, folder 5 titled "1925, Part 10 (unsorted)."

<sup>318</sup> Enclosed with letter to EED from Richard Dana Lyman, 5 July 1925, in box 68, folder 5 titled "1925, Part 10 (unsorted)."

<sup>319</sup> Enclosed with letter from Katherine Ellery Lyman, Emily Orwig Lyman, and Richard Dana Lyman, 5 March 1925, in box 68, folder 5 titled "1925, Part 10 (unsorted)."

<sup>320</sup> Enclosed with letter from Katherine Ellery Lyman, Emily Orwig Lyman, and Richard Dana Lyman, 5 March 1925, in box 68, folder 5 titled "1925, Part 10 (unsorted)."

<sup>321</sup> Enclosed with letter from Katherine Ellery Lyman, Emily Orwig Lyman, and Richard Dana Lyman, 5 March 1925, in box 68, folder 5 titled "1925, Part 10 (unsorted)."

<sup>322</sup> Enclosed with letter from Katherine Ellery Lyman, Emily Orwig Lyman, and Richard Dana Lyman, 5 March 1925, in box 68, folder 5 titled "1925, Part 10 (unsorted)."



Item #	Item	Box	Env.
067	Photograph, 1925 <sup>324</sup> 6.0 x 9.0 cm -- black and white; a house viewed from a street; Wilmette, IL	D5	67
068	Photograph, 1925 <sup>325</sup> 6.0 x 9.0 cm -- black and white; group portrait of Charlotte Dana Lyman (kneeling) and Katherine Ellery Lyman (seated)	D5	68
069	Photograph, 1925 <sup>326</sup> 6.0 x 9.0 cm -- black and white; group portrait of Charlotte Dana Lyman (kneeling) and Katherine Ellery Lyman (seated on tricycle)	D5	69
070	Photograph, 1925 <sup>327</sup> 6.0 x 9.0 cm -- black and white; group profile of Katherine Ellery Lyman and Charlotte Dana Lyman, who holds a teddy bear	D5	70
071	Postcard, photographic, 1925 <sup>328</sup> 8.75 x 14.0 cm -- building viewed from a street; labeled "Orvis Inn, Manchester, Vt. "	D5	71
072	Photograph, 1925 <sup>329</sup> 6.0 x 9.0 cm -- black and white; portrait of Katherine Ellery Lyman; subject is seated on a sled	D5	72
073	Photograph, 1925 <sup>330</sup> 6.0 x 9.0 cm -- black and white; portrait of Katherine Ellery Lyman; subject is standing in front of a fence	D5	73
074	Photograph, 1925 <sup>331</sup> 6.0 x 9.0 cm -- black and white; portrait of Katherine Ellery Lyman; subject is standing in front of a fence and is looking at the ground	D5	74
075	Photograph, 1925 <sup>332</sup> 6.0 x 9.0 cm -- black and white; Katherine Ellery Lyman standing next to a wagon filled with dolls and holding a potted plant	D5	75

<sup>323</sup> Enclosed with letter from Katherine Ellery Lyman, Emily Orwig Lyman, and Richard Dana Lyman, 5 March 1925, in box 68, folder 5 titled "1925, Part 10 (unsorted)."

<sup>324</sup> Enclosed with letter from Katherine Ellery Lyman, Emily Orwig Lyman, and Richard Dana Lyman, 5 March 1925, in box 68, folder 5 titled "1925, Part 10 (unsorted)."

<sup>325</sup> Enclosed with letter to EED from Charlotte Dana Lyman, 10 April 1925, in box 68, folder 5 titled "1925, Part 10 (unsorted)."

<sup>326</sup> Enclosed with letter to EED from Charlotte Dana Lyman, 10 April 1925, in box 68, folder 5 titled "1925, Part 10 (unsorted)."

<sup>327</sup> Enclosed with letter to EED from Charlotte Dana Lyman, 10 April 1925, in box 68, folder 5 titled "1925, Part 10 (unsorted)."

<sup>328</sup> Postcard sent to EED from "Nelly," 7 October 1926. Originally filed in box 69, folder 6 titled "1926, Part 8 (October-November)."

<sup>329</sup> Enclosed with letter to EED from Richard Dana Lyman, 10 February 1926, in box 70, folder 1 titled "1926, Part 11 (unsorted)."

<sup>330</sup> Enclosed with letter to EED from Charlotte Dana Lyman, 6 July 1926, in box 70, folder 1 titled "1926, Part 11 (unsorted)."

<sup>331</sup> Enclosed with letter to EED from Charlotte Dana Lyman, 26 June 1926, in box 70, folder 1 titled "1926, Part 11 (unsorted)."

<sup>332</sup> Enclosed with letter to EED from Charlotte Dana Lyman, 26 June 1926, in box 70, folder 1 titled "1926, Part 11 (unsorted)."

Item #	Item	Box	Env.
076	Postcard, photographic, 1925 <sup>333</sup> 8.75 x 14.0 cm -- cemetery at Swallowfield Church, England	D5	76
077	Photograph, 1926 <sup>334</sup> 7.0 x 11.5 cm -- black and white; portrait of Dana Martin as a newborn child	D5	77
078	Photograph, 1927 <sup>335</sup> 6.0 x 9.0 cm -- black and white; Katherine Ellery Lyman standing in front of a fence and holding onto a pole	D5	78
079	Photograph, 1927 <sup>336</sup> 6.0 x 9.0 cm -- black and white; portrait of Katherine Ellery Lyman; subject is seated on a tricycle	D5	79
080	Photograph, 1927 <sup>337</sup> 8.5 x 10.25 cm -- black and white; group portrait of Katherine Ellery Lyman and two other children; subjects are sitting on the ground and holding dolls in front	D5	80
081	Photograph, 1927 <sup>338</sup> 6.0 x 9.0 cm -- black and white; group portrait of Richard Dana Lyman (seated on a swing) and Katherine Ellery Lyman (facing away from the camera while climbing onto the swing); a tricycle is visible in foreground	D5	81
082	Photograph, 1928 <sup>339</sup> 6.75 x 8.25 cm -- black and white; portrait of Katherine Ellery Lyman; subject is standing in front of a wall which has the number "1504" on a sign at top	D5	82
083	Photograph, 1928 <sup>340</sup> 6.25 x 8.75 cm -- black and white; portrait of Katherine Ellery Lyman; subject is holding a doll and another doll is on the floor in a standing position	D5	83
084	Postcard, photographic, 1929 <sup>341</sup> 8.5 x 13.5 cm -- a building and garden; building has ivy growing along its walls	D5	84

<sup>333</sup> Postcard enclosed with another postcard and a letter to EED from Elizabeth F. Henrus, 21 November 1926, in box 70, folder 2 titled "1926 (accession LONG-70)."

<sup>334</sup> Enclosed with letter to EED from Charlotte Dana Lyman, 9 January 1927, in box 71, folder 3 titled "1927, Part 8 (December and unsorted)."

<sup>335</sup> Enclosed with letter to EED from Charlotte Dana Lyman, 13 August 1927, in box 71, folder 4 titled "1927 (accession LONG-70), Part 1."

<sup>336</sup> Enclosed with letter to EED from Emily Orwig Lyman, 5 August 1927, in box 71, folder 4 titled "1928 (accession LONG-70), Part 1."

<sup>337</sup> Enclosed with letter to EED from Emily Orwig Lyman, 5 August 1927, in box 71, folder 4 titled "1928 (accession LONG-70), Part 1."

<sup>338</sup> Enclosed with letter to EED from Emily Orwig Lyman, 5 August 1927, in box 71, folder 4 titled "1928 (accession LONG-70), Part 1."

<sup>339</sup> Enclosed with letter to EED from Richard Dana Lyman, 21 February 1928, in box 72, folder 7 titled "1928 (accession LONG-70), Part 1."

<sup>340</sup> Enclosed with letter to EED from Richard Dana Lyman, 21 February 1928, in box 72, folder 7 titled "1928 (accession LONG-70), Part 1."

Item #	Item	Box	Env.
085	Postcard, photographic, 1930 <sup>342</sup> 8.75 x 13.75 cm -- interior of St. Michael's Church in Marblehead, Massachusetts	D5	85
086	Photograph, 1930 <sup>343</sup> 8.0 x 10.25 cm -- black and white; a house viewed from a street; labeled on back "Mrs. Warden's House/Duxbury 1930"	D5	86
087	Photograph, 1930 <sup>344</sup> 8.25 x 10.75 cm -- black and white; maritime scene of a sailboat on the ocean; sail is down and two men are on deck; at right is a small raft being paddled by a third man	D5	87
088	Postcard, photographic, 1931 <sup>345</sup> 8.75 x 13.75 cm -- several scenes surrounding a map of northeastern Massachusetts's shoreline; seven separate photographs; lettering above map reads "A Delightful Trip to/Delmonte's Magnolia, Mass./And the North Shore"	D5	88
089	Photograph, 1934 <sup>346</sup> 7.0 x 11.5 cm -- black and white; group portrait of Alfred E. Stocker and Walter Stocker Dana (back row), Robert Futher Dana, George Reeve Dana, Walter Dwight Dana, Marion Stocker Dana, and Horace Dwight Dana, and a dog (front row)	D5	89
090	Photograph, 1934 <sup>347</sup> 7.25 x 11.5 cm -- black and white; portrait of Horace Dwight Dana; subject is sitting on the top step in a short flight of stairs	D5	90
091	Photograph, 1934 <sup>348</sup> 7.25 x 12.0 cm -- black and white; portrait of Walter Stocker Dana	D5	91
092	Photograph, 1934 <sup>349</sup> 7.25 x 12.0 cm -- black and white; group portrait of Walter D. Dana and "the four boys"	D5	92

<sup>341</sup> Postcard sent to EED from "Nellie," 13 July 1929. Originally filed in box 73, folder 4 titled "1929, Part 3 (July-September)."

<sup>342</sup> Enclosed with letter to EED from [Madeleein?] L Palmer, 14 August 1930, in box 74, folder 6 titled "1930, Part 6 (July-August)."

<sup>343</sup> Sent to EED from Mary Warden, 3 September 1930. Originally filed in box 74, folder 7 titled "1930, Part 7 (August-October)."

<sup>344</sup> Sent to EED from Mary Warden, 3 September 1930. Originally filed in box 74, folder 7 titled "1930, Part 7 (August-October)."

<sup>345</sup> Postcard sent to EED, 21 July 1931. Originally filed in box 85, folder 2 titled "Unknown dates (accession LONG-70), Part 2." (This item was misfiled under "unknown dates" and is actually dated 1931.)

<sup>346</sup> Sent to EED from Walter D. Dana, 18 January 1934. Originally filed in box 77, folder 9 titled "1934, Part 3 (unsorted)."

<sup>347</sup> Sent to EED from Walter D. Dana, 18 January 1934. Originally filed in box 77, folder 9 titled "1934, Part 3 (unsorted)."

<sup>348</sup> Sent to EED from Walter D. Dana, 18 January 1934. Originally filed in box 77, folder 9 titled "1934, Part 3 (unsorted)."

<sup>349</sup> Sent to EED from Walter D. Dana, 18 January 1934. Originally filed in box 77, folder 9 titled "1934, Part 3 (unsorted)."

Item #	Item	Box	Env.
093	Carte-de-visite, <sup>350</sup> 3.75 x 5.75 cm -- portrait of unidentified man	D5	93
094	Photograph, <sup>351</sup> 4.5 x 7.0 cm -- black and white; snapshot of soldiers; labeled on reverse "Soldiers in Khaki at sports in Dunfries"	D5	94
095	Photograph, <sup>352</sup> 4.5 x 7.0 cm -- black and white; landscape with house; labeled on reverse "Mr. Chance's House at Morton, Carlisle"	D5	95
096	Photograph, <sup>353</sup> 4.5 x 7.0 cm -- black and white; a castle and walls viewed from a street; labeled on reverse "Fort Castle, Ayr"	D5	96
097	Photograph, <sup>354</sup> 4.5 x 7.0 cm -- black and white; landscape with house; labeled on reverse "Elleray House"	D5	97
098	Photograph, <sup>355</sup> 4.5 x 7.0 cm -- black and white; gravestone; labeled on reverse "gravestone in Allmay Kirkyard"	D5	98
099	Photograph, <sup>356</sup> 4.5 x 7.0 cm -- black and white; snapshot, children entering a building; labeled on reverse "Globe Inn, 2 children at steps, Dunfries"	D5	99
100	Photograph, <sup>357</sup> 8.5 x 13.5 cm -- black and white; portrait of three men in traditional Scots clothing	D6	1
101	Postcard, photographic, <sup>358</sup> 8.5 x 13.5 cm -- a docked steamship at Luss Pier, Loch Lomond, Scotland	D6	2
102	Photograph, <sup>359</sup> 8.25 x 14.0 cm -- black and white; a church viewed from a street	D6	3
103	Photograph, <sup>360</sup> 8.25 x 14.0 cm -- black and white; side view of a church; a cemetery is visible in the foreground	D6	4

<sup>350</sup> Sent to EED. Originally filed in box 84, folder 2 titled "Unknown dates, Part 42."

<sup>351</sup> Enclosed in a single envelope addressed to "Miss Dana." EED annotated the envelope "[Illegible] by Mrs. W.," box 84, folder 2 titled "Unknown dates, Part 42."

<sup>352</sup> Enclosed in a single envelope addressed to "Miss Dana." EED annotated the envelope "[Illegible] by Mrs. W.," box 85, folder 1 titled "Unknown dates (accession LONG-70), Part 1."

<sup>353</sup> Enclosed in a single envelope addressed to "Miss Dana." EED annotated the envelope "[Illegible] by Mrs. W.," box 85, folder 1 titled "Unknown dates (accession LONG-70), Part 1."

<sup>354</sup> Enclosed in a single envelope addressed to "Miss Dana." EED annotated the envelope "[Illegible] by Mrs. W.," box 85, folder 1 titled "Unknown dates (accession LONG-70), Part 1."

<sup>355</sup> Enclosed in a single envelope addressed to "Miss Dana." EED annotated the envelope "[Illegible] by Mrs. W.," box 85, folder 1 titled "Unknown dates (accession LONG-70), Part 1."

<sup>356</sup> Enclosed in a single envelope addressed to "Miss Dana." EED annotated the envelope "[Illegible] by Mrs. W.," box 85, folder 1 titled "Unknown dates (accession LONG-70), Part 1."

<sup>357</sup> Enclosed in a single envelope addressed to "Miss Dana." EED annotated the envelope "[Illegible] by Mrs. W.," box 85, folder 1 titled "Unknown dates (accession LONG-70), Part 1."

<sup>358</sup> Originally filed in box 85, folder 2 titled "Unknown dates (accession LONG-70), Part 2."

<sup>359</sup> Sent to EED from Dennison D. Dana, 23 May [year unknown]. Originally filed in box 85, folder 2 titled "Unknown dates (accession LONG-70), Part 2."

<sup>360</sup> Sent to EED from Dennison D. Dana, 23 May [year unknown]. Originally filed in box 85, folder 2 titled "Unknown dates (accession LONG-70), Part 2."

Item #	Item	Box	Env.
104	Photograph, <sup>361</sup> 8.25 x 14.0 cm -- black and white; side view of a church; a cemetery is visible in the foreground	D6	5
105	Photograph, <sup>362</sup> 8.25 x 14.0 cm -- black and white; several buildings of a village viewed from a street	D6	6
106	Photograph, <sup>363</sup> 8.25 x 14.0 cm -- black and white; several buildings of a village viewed from a street	D6	7
107	Photograph, <sup>364</sup> 8.25 x 14.0 cm -- black and white; interior of a church	D6	8
108	Photograph, <sup>365</sup> 8.25 x 14.0 cm -- black and white; interior of a church	D6	9
109	Photograph, <sup>366</sup> 8.25 x 14.0 cm -- black and white; a church viewed from a street	D6	10
110	Photograph, 1920 <sup>367</sup> 9.0 x 14.85 cm -- black and white; a dilapidated building viewed from a street	D6	11
111	Photograph, 1922 <sup>368</sup> 8.75 x 13.75 cm -- black and white; portrait of Emily Orwig Lyman	D6	12
112	Proof sheet, 1934 <sup>369</sup> 4.25 x 15.25 cm -- series of five photographs; four portraits of Katherine Ellery Lyman and one group portrait of Louise Lyman and Katherine Ellery Lyman	D6	13
113	Photograph, 1927 <sup>370</sup> 10.0 x 15.0 cm -- black and white; group portrait of Pearl, man, Ethel (back row); Chas. A. and Harry (middle row); Otis Dana, Mrs. Dana, and Homer Dana (front row)	D6	14

<sup>361</sup> Sent to EED from Dennison D. Dana, 23 May [year unknown]. Originally filed in box 85, folder 2 titled Unknown dates (accession LONG-70), Part 2."

<sup>362</sup> Sent to EED from Dennison D. Dana, 23 May [year unknown]. Originally filed in box 85, folder 2 titled Unknown dates (accession LONG-70), Part 2."

<sup>363</sup> Sent to EED from Dennison D. Dana, 23 May [year unknown]. Originally filed in box 85, folder 2 titled Unknown dates (accession LONG-70), Part 2."

<sup>364</sup> Sent to EED from Dennison D. Dana, 23 May [year unknown]. Originally filed in box 85, folder 2 titled Unknown dates (accession LONG-70), Part 2."

<sup>365</sup> Sent to EED from Dennison D. Dana, 23 May [year unknown]. Originally filed in box 85, folder 2 titled Unknown dates (accession LONG-70), Part 2."

<sup>366</sup> Sent to EED from Dennison D. Dana, 23 May [year unknown]. Originally filed in box 85, folder 2 titled Unknown dates (accession LONG-70), Part 2."

<sup>367</sup> Sent to Mr. and Mrs. R.W. Ney from Mrs. Ney, 15 July 1921. Originally filed in box 63, folder 2 titled "1921, Part 9." Negative image in box 92, envelope 1.

<sup>368</sup> Enclosed with letter to EED from Emily Orwig Lyman, in box 65, folder 2 titled "1922, Part 13." Also included was the photograph in box 91, envelope 50.

<sup>369</sup> Sent to EED from Homer J. Dana, 29 August 1927. Originally filed in box 77, folder 10 titled "1934, Part 4 (unsorted)."

<sup>370</sup> Sent to EED from Emily Orwig Lyman, 8 October 1934. Originally filed in box 77, folder 9 titled "1934, Part 3 (unsorted)."

---

<b>Item #</b>	<b>Item</b>	<b>Box</b>	<b>Env.</b>
114	Negative, 1920 <sup>371</sup> on translucent plastic-like material, 9.0 x 15.0 cm -- a dilapidated building viewed from a street; labeled on border "First Frame House in California"	D8	1

---

---

<sup>371</sup> Sent to EED from Mrs. Lucie Ney, 20 August 1921. Originally filed in box 63, folder 2 titled "1921, Part 9." Positive image in box 92, envelope 2.

## ***BIBLIOGRAPHY***

Dana, Elizabeth Ellery, ed. *British in Boston; Being the Diary of Lieutenant John Barker of the King's Own Regiment from November 15, 1774 to May 31, 1776*. Cambridge, MA: Harvard University Press, 1924.

Dana, Elizabeth Ellery. *The Dana Family in America*. Cambridge, MA: Wright & Potter Printing Company, 1956.

Dana, H.W.L. *The Dana Saga: Three Centuries of the Dana Family in Cambridge*. Cambridge, MA: The Cambridge Historical Society, 1941.

Lucid, Robert F., ed. *The Journal of Richard Henry Dana, Jr.* 3 vols. Cambridge, MA: The Belknap Press of Harvard University Press, 1968.

Palmer, Mary Towle. *Story of the Bee*. Cambridge, MA: Riverside Press, 1924.

U.S. Department of the Interior, National Park Service. *Automated National Catalog System User Manual*. Washington, D.C.: National Park Service, April 1987.

U.S. Department of the Interior, National Park Service, North Atlantic Region Branch of *Museum Services History Cataloging Standards Committee*. *Guidelines for Cataloging History Collections Using the National Park Service Automated National Catalog System*. Boston, MA: National Park Service, Summer 1993.

U.S. Department of the Interior, National Park Service. *Museum Handbook, Part II: Museum Records*. Washington, D.C.: National Park Service, September 1984.

## APPENDIX: CORRESPONDENT LISTING

*The following is an incomplete list of correspondents whose letters are contained in Series I. Correspondence. The indexing project upon which this list is based covered the date range from 1808 through about 1881.*

*An asterix indicates a member of the “Bee”*

### A

Allston, Martha Remington (Dana)  
Allyn, Anna Winter (Page)

### B

Bigelow, Carrie  
Butler, Mrs. C.E.

### C

Carrington, Edwin T.  
Carrington, Katherine  
Carrington, Sarah  
Carrington, Sarah (Terry)  
Channing, Walter, Jr.  
Channing, William Ellery  
Curtis, Mary

### D

Daggett, Elizabeth (Watson)  
Daggett, Ellsworth  
Daggett, Mary  
Daggett, Oliver Ellsworth  
Daggett, Susan Elizabeth  
Dana, Allston  
Dana, Charles P.  
Dana, Edith (Longfellow)  
Dana, Edmund Trowbridge (b. 1779)  
Dana, Edmund Trowbridge (b. 1818)  
Dana, Edmund Trowbridge (b. 1886)  
Dana, Elizabeth Ellery (b. 1789)  
Dana, Elizabeth Ellery (b. 1846)  
Dana, Frances Maston (Burke)  
Dana, Francis III  
Dana, Henry Wadsworth Longfellow  
Dana, Isabella Hazen

Dana, Mary Elizabeth  
Dana, Richard Henry III  
Dana, Richard Henry IV  
Dana, Richard Henry, Jr.  
Dana, Richard Henry, Sr.  
Dana, Ruth Charlotte  
Dana, Sarah (Watson)  
Davenport, Julia  
deRham, Frances Appleton (Dana)  
Dixwell, Susan Hunt

### E

Eliot, Grace M. (Hopkinson)

### F

Farlow, Lilian (Horsford)

### G

Goodrich, Betta  
Goodwin, Mollie

### H

Hamilton, William E.  
Hopkinson, Grace M.\*  
Horsford, Kate  
Hutchinson, Delia Farley (Dana)

### J

Johnson, Bessie  
Johnson, Kate L. B.  
Johnson, Laura W.  
Johnson, Ollie T.



**K**

Killam, Harriet (Watson)

**L**

Little, Abby W.  
Longfellow, Frances (Appleton)  
Loring, Margaret Fuller (Channing)  
Lyman, Charlotte Dana  
Lyman, Emily (Orwig)  
Lyman, Francis Ogden  
Lyman, Richard Dana  
Lyman, Ruth Charlotte (Dana)

**M**

Marsh, Abigail  
Marsh, Ann "Nancy"  
Marsh, Frances Ann  
Marsh, John  
Marsh, Laura  
Marsh, Lydia  
Marsh, Mary Brimmer  
Metcalf, Julia

**O**

Olmsted, Susan

**P**

Parker, F.E.  
Parsons, Caroline Louisa  
Porter, Sarah

**R**

Rich, Ella  
Ripley, George  
Ripley, Sophia Willard (Dana)

**S**

Savage, Isabelle Swift (Fitzhugh)

Schaff, Alice\*  
Skinner, Angela Henrietta Channing (Dana)  
Skinner, Richard Dana  
Stedman, Francis Dana  
Swayne, Sarah Watson (Dana)  
Swayne, Walter Scott

**T**

Tendor, M.  
Terry, Sarah (Watson)  
Toffey, Katharine Vanderburg  
Towne, Helen C.

**W**

Watson, John  
Watson, John Marsh  
Watson, Julia  
Watson, Louise Adele (Lynch)  
Watson, Mary  
Watson, Mary (Marsh)  
Watson, Minnie B.  
Watson, William  
Watson, William, Jr.  
Weston, Sarah C. (Winthrop)  
Weston, Theodore  
Wild, Henry Fearing  
Wild, Mary Rosamond (Dana)  
Willard, Joseph  
Willard, Sidney  
Willard, Susanna  
Willard, Susanna (Lewis)  
Willing, Mrs. Charles  
Willson, Jared  
Willson, Mary Ann (Watson)  
Willson, Richard Dana  
Willson, Rosalie  
Willson, Russell  
Wood, Anne Penelope (Dana)  
Wood, Charles  
Wood, Kate  
Wood, William Henry