



# Finding Aid

Richard Henry Dana III (1851-1931) Papers, 1797-1947  
(bulk dates: 1860-1915)

Edition 3.0 (2022)

Collection Catalog No. LONG 27883



| <i>Edition</i> | <i>Date of Revision</i> | <i>Author(s)</i>  |
|----------------|-------------------------|---|
| 1.0            | December 2001           | Jennifer Lyons, Lauren Malcolm, Jalien G. Hollister, Northeast Museum Services Center |
| 2.0            | January 2007            | Margaret Welch, Northeast Museum Services Center                                      |
| 2.1 (draft)    | Spring 2010             | Lauren Malcolm, LONG  |
| 3.0            | July 2022               | Kate Hanson Plass, LONG   |

*Cover Illustration:*

*Richard Henry Dana III (1851-1931), ca. 1893. Notman Photographic Company, Boston.*

*Dana Family Papers. 3004.002/001-#318.*

*Courtesy of Longfellow House-Washington's Headquarters National Historic Site.*



## CONTENTS

|  |     |
|--|-----|
| Preface.....   | iii |
| Restrictions .....   | v   |
| Introduction.....  | 1   |
| Abbreviations Used in This Document.....                               | 2   |
| Part 1: Collection Description.....                                    | 3   |
| Scope and Content Note.....  | 4   |
| Related Materials .....  | 6   |
| Organization.....  | 8   |
| Subcollection and Series Descriptions.....                             | 10  |
| Subcollection I. Manuscripts, Part I. Research.....                    | 10  |
| Subcollection I. Manuscripts, Part II. Personal Papers.....            | 10  |
| Subcollection II. Photographic Materials .....                         | 13  |
| Oversize Materials .....   | 14  |
| Part 2: Biographical Data.....   | 15  |
| Biographical Note .....  | 17  |
| Chronology .....   | 17  |
| Richard Henry Dana III (1851-1931) .....                               | 18  |
| Genealogical Charts .....  | 20  |
| Part 3: Collection Listing.....  | 25  |
| Subcollection I. Manuscripts, Part I. Research, 1862-1934.....         | 27  |
| Series A. General Materials, 1862-1934.....                            | 27  |
| Subcollection I. Manuscripts, Part II. Personal papers, 1797-1947..... | 30  |
| Series A. Personal Materials, 1867-1931.....                           | 30  |
| Series B. Correspondence, 1860-1931 .....                              | 32  |
| Series C. Legal Career, 1865-1912 .....                                | 34  |
| Series D. RHD III Legal and Financial Records, 1884-1947 .....         | 41  |
| Series E. RHD III Property, 1884-1947 .....                            | 41  |
| Series F. Dana Family Records, 1797-1947 .....                         | 42  |
| Series G. Reform Activities, 1886-1934.....                            | 48  |
| Series H. Organizations, 1872-1931 .....                               | 54  |
| Series I. Collected Material, 1850-1931 .....                          | 58  |
| Series J. Edith (Longfellow) Dana (1853-1915).....                     | 59  |

|   |    |
|---|----|
| Series K. Helen (Ford) Mumford Dana (1865-1934) ..... | 59 |
| Subcollection II. Photographic Materials .....        | 60 |
| Series A. Loose Photographs (1004.002/001) .....      | 60 |
| Series B. Photograph Albums .....                     | 64 |
| Bibliography .....                                    | 68 |
| Appendix A: List of Catalog Numbers .....             | 69 |

## ***PREFACE***

The *Richard Henry Dana III (1851-1931) Papers* was processed by staff at the Northeast Museum Services Center (NMSC). The staff included former SPNEA Archivist Jennifer Lyons, and former SPNEA Catalogers Jalien Hollister and Lauren Malcolm. During FY 2000, this team catalogued 32.3 linear feet (51, 680 items). NMSC staff processed an additional portion in FY 2007. This collection includes materials of Richard Henry Dana III (1851-1931) [RHD III] and materials related to him collected by his son, Henry Wadsworth Longfellow Dana (1881-1951)[HWLD], and his sister, Elizabeth Ellery Dana (1846-1939) [EED]. The photographs were catalogued in 2002 in a separate project. Earlier finding aids become obsolete with this third edition.

The NMSC catalogers expressed their gratitude towards staff at the Longfellow House-Washington's Headquarters National Historic Site<sup>1</sup> for their assistance in carrying out this work, in particular Archives Specialist Anita Israel, former Curator Janice Hodson, and Site Manager Jim Shea. The catalogers also thanked Michelle Ortwein, former NMSC Curator and Liz Banks, NMSC Senior Archivist for their assistance.

This document represents many hours of work recording details about the items herein described. The reader should expect a reasonable degree of human error and consequently rely on personal observation of the items.

---

<sup>1</sup> Then Longfellow National Historic Site.



## ***RESTRICTIONS***

The copyright law of the United States (Title 17, *United States Code*) governs the making of photocopies or other reproductions of copyrighted materials. The Privacy Act of 1974 (5 *United States Code* 552a) governs the use of materials that document private individuals, groups and corporations.

Under certain conditions specified in the law, libraries and archives are authorized to furnish a reproduction if the document does not infringe the privacy rights of an individual, group or corporation. These specified conditions of authorized use include:

- non-commercial and non-profit study, scholarship, research or teaching
- criticism or commentary
- as a NPS preservation or security copy for research use
- as a research copy for deposit in another institution

If the researcher later uses a copy or reproduction for purposes in excess of "fair use," the researcher is personally liable for copyright, privacy, or publicity infringement and agrees to indemnify the NPS from any legal action as a result of the error. Permission to obtain a photographic, xerographic, digital or other copy of a document **doesn't** indicate permission to publish, exhibit, perform, reproduce, sell, distribute or prepare derivative works from the document without permission from the copyright holder and from any private individual, group or corporation shown or otherwise recorded.

Permission to publish, exhibit, perform, reproduce, prepare derivative works from, sell or otherwise distribute the item must be obtained separately in writing from the holder of the original copyright (or if the creator is dead from his/her heirs) as well as from any individual(s), groups or corporations whose name, image, recorded words or private information (e.g. employment information) may be reproduced in the source material. The holder of the original copyright **isn't** necessarily the National Park Service. The National Park Service is not legally liable for copyright, privacy or publicity infringement when materials are wrongfully used after being provided to researchers for "fair use."

This institution reserves the right to refuse to accept a copying order if fulfillment of the order is judged in violation of copyright or federal or state privacy or publicity law. This institution also places restrictions on the use of cameras, photocopiers and scanners in the research room.





## ***INTRODUCTION***

The *Papers of Richard Henry Dana III (1851-1931)* is an archival collection that was compiled by Richard Henry Dana III (1851-1931) and his son, Henry Wadsworth Longfellow Dana (1881-1950). It is one of the many rich collections held at the Longfellow House. The archives collection, including most of the papers of various Dana family members, was accessioned into the LONG museum collection as part of LONG-1 when the Longfellow House Trust donated the Longfellow house and its contents to the National Park Service in 1973.

In fiscal years 1998 and 1999/2000, staff at the Longfellow National Historic Site submitted requests for Backlog Cataloging Funds to catalog a portion of the *Dana Family Papers*. These funding requests were approved, and the park staff requested that the Northeast Museum Services Center (NMSC) complete the work. After creating an inventory and surveying what was thought to be one collection, NMSC and park staff determined that there were actually three collections: the *Dana Family Papers: Collected Manuscripts, Genealogies, and Research Materials (LONG 27037)*, the *Elizabeth Ellery Dana (1846-1939) Personal Papers (LONG 27882)* and the *Richard Henry Dana III (1851-1931) Papers (LONG 27883)*. The distinction was made because the later two collections are organic personal paper collections left somewhat intact by their creators. On the other hand, the *Dana Family Papers*, consists of papers created and collected by Elizabeth Ellery Dana (1846-1939) [EED] and Henry Wadsworth Longfellow Dana (1881-1950) [HWLD] throughout their research into Dana family history.

The accession LONG-70 portion of the collection was removed from the Site sometime after 1950 and returned in January of 1995. LONG staff inventoried the materials. Before this project, some material was removed from this accession and processed with the *Dana Collected Correspondence, 1808-1938 (LONG 21808)*. As with that collection, material from Accession 70 was marked as such (on the folder) and sorted into the *Dana Family Papers (LONG 27037)*, the *Richard Henry Dana III Papers (LONG 27883)* and the *Elizabeth Ellery Dana (1846-1939) Personal Papers (LONG 27882)*. .5 linear feet of additional materials, identified in subsequent cataloging projects, were processed, and the finding aid was finalized in early 2007 with Backlog Cataloging Funds.

The material that was processed was arranged into series and rehoused into acid-free folders and archival boxes. All paper clips, staples, and other metal fasteners were removed. Particularly acidic materials were separated from other materials in a folder with acid-free paper. Separation sheets were created for the oversize items to cross-reference to their original locations. Items were flattened before their removal when necessary. Some newspapers were left folded due to their extremely brittle nature.

Photographs were removed from the collection, and separation sheets were created to cross-reference the moved photographs to their original locations. Ms. Lyons and Ms. Malcolm rehoused and catalogued these photographs in the FY00 Photos project. The photographs were described at the item level in a corresponding database.<sup>2</sup> A fuller description of the cataloging

---

<sup>2</sup> At the time, the Automated National Catalog System Plus (ANCS+) database. Its successor database is the Interior Collections Management System (ICMS).

and descriptions of the photographs are available in the *Addendum to the Photographs in the Elizabeth Ellery Dana (1846-1939) Personal Papers, 1829-1940, Richard Henry Dana III (1851-1931) Papers, 1797-1947, Dana Collected Correspondence, 1808-1938, and Dana Family Papers, 1661-1960* created at the conclusion of the Photos project. The database is also available at the Longfellow House – Washington’s Headquarters National Historic Site.

The *Papers of Richard Henry Dana III* were cataloged into the National Park Service’s Automated National Catalog System Plus database. This finding aid was created.

## ***ABBREVIATIONS USED IN THIS DOCUMENT***

|         |   |
|---------|---|
| ICMS    | Interior Collections Management System      |
| EED     | Elizabeth Ellery Dana [“Lily”] (1846-1939)  |
| ELD     | Edith (Longfellow) Dana (1853-1915)         |
| HFMD    | Helen (Ford) Mumford Dana (1865-1934)       |
| HWLD    | Henry Wadsworth Longfellow Dana (1881-1950) |
| RHD Jr. | Richard Henry Dana Jr.                      |
| RHD III | Richard Henry Dana III (1851-1931)          |

***PART 1:***

***COLLECTION DESCRIPTION***

## SCOPE AND CONTENT NOTE

The *Richard Henry Dana III (1851-1931) Papers, 1797-1947 (Bulk dates: 1860-1915)*

*Catalog Number:* LONG 27883

*Accession Number:* LONG-1, LONG-70

*Quantity:* Manuscripts: 32.7 linear feet (52,320 items).  
Photographs: 89 items.

*Storage:* 31 legal size document boxes, 1 letter size 2.5” document box, 13 oversize flat boxes, 2 map folders.  
Photographic materials stored separately.

*Location:* Longfellow House – Washington’s Headquarters National Historic Site, 105 Brattle Street, Cambridge, Massachusetts 02138-3407, (617) 876-4491.

*Description:* The *Richard Henry Dana III Papers* is a collection of papers amassed by Richard Henry Dana III (1851-1931) [RHD III] and Henry Wadsworth Longfellow Dana (1881-1950) [HWLD]. The majority of the papers were accumulated by RHD III during his lifetime and posthumously by HWLD; several items were collected by RHD III’s sister, Elizabeth Ellery Dana (1846-1939) [EED]. These papers were removed from the Dana Family Papers because of their organic nature. Also, estate records of many of the Dana family members are present in the collection of RHD III since he was the executor of their estates.

Subcollection I. Manuscripts consists of manuscript and printed material. It is divided into two parts: I. Research and II. Personal Papers. The first part consists of materials collected by HWLD, Elizabeth Ellery Dana (1846-1939) [EED] and Helen (Ford) Mumford Dana (1865-1934) [HFMD] during the final years of RHD III’s life and after his death including correspondence about RHD III and obituaries and memorials.

The second part, II. Personal Papers, consists of RHD III’s diaries, correspondence, academic papers, papers related to his legal career, his personal financial and legal records, papers documenting his involvement with Civil Service reform and other causes and organizations.

Subcollection II. Photographic Materials consists of photographs removed from the manuscript collection and photographs associated with RHD III.

*Preferred Citation:* [Identification of item, series], in the *Richard Henry Dana III (1851-1931) Papers, 1797-1947 (LONG 27883)*, Longfellow House–Washington’s Headquarters National Historic Site.



## ***RELATED MATERIALS***

More papers of Richard Henry Dana III are deposited at the Massachusetts Historical Society. The Massachusetts Historical Society holds the *Dana Family Papers, 1654-1933*, which primarily also includes papers from Francis Dana (1743-1811), Richard Henry Dana, Sr. (1787-1879), and Richard Henry Dana, Jr. (1815-1882), although other members of the Dana family are also represented.

In addition, because of the many people working with the papers at the Longfellow House, not the least of being Henry Wadsworth Longfellow Dana himself, there is a certain amount of intermingling between collections. Materials from the *Richard Henry Dana III* collection have been removed to, taken from, or reference similar topics as the collections listed below.

- LONG 21808: *Dana Collected Correspondence, 1808-1938 (Bulk Dates 1857-1934)*. The primary force behind the accumulation of this collection was EED. She not only saved her own correspondence but that of family members including RHD III (1851-1931) and their parents. The collection contains this correspondence along with related items such as newspaper clippings, natural history specimens, objects and photographs that were all enclosed with various letters throughout the collection.
- LONG 27037: *Dana Family Papers, Collected Manuscripts, Genealogies, and Research Materials, 1661-1960 (bulk dates 1750-1940)* is a collection of papers amassed by Elizabeth Ellery Dana (1846-1939) and Henry Wadsworth Longfellow Dana (1881-1950) through the course of their research and writing of *The Dana Family in America*. The collection contains subcollections: I. *The Dana Family in America* Records and II. *The Dana Family: Research and Collected Manuscripts*. This collection contains very little material created by Richard Henry Dana III (1851-1931); however, researchers should note that persons and subjects referenced in the Dana Family Records series of the RHD III Papers have extensive related materials in the Dana Family Papers.
- LONG 27882: *Elizabeth Ellery Dana (1846-1939) Personal Papers*. EED collected transcripts of portions of RHD III's diaries.
- LONG 27930: *Henry Wadsworth Longfellow Family Papers*. This collection includes the Edith Longfellow Dana's (1853-1915) personal papers. A few papers referring to her or documents concerning her and her husband's affairs are present in this collection. Researchers on ELD should look both in the RHD III Papers and the Longfellow Family

Papers.

- Various catalog numbers<sup>3</sup>: *Art Collection.* Several sketchbooks and drawings show RHD III's interest in drawing landscapes and seascapes as a child and as an adult.
- LONG 17314: *Henry Wadsworth Longfellow Dana (1881-1950) Papers.* HWLD incorporated letters to RHD III from notable persons into his biographic files related to those persons. Also contains letters from RHD III to HWLD.
- LONG 27886 *Longfellow Family Photograph Collection.* RHD III images were collected by Longfellow family members, and he appears in many group photographs.

---

<sup>3</sup> Catalog numbers include LONG 19442-19483, 19636.



## **ORGANIZATION**

### I. Manuscripts

#### I-I. Research

##### A. General

1. Biographical Materials
2. Obituaries and Memorials
3. Correspondence
4. HWLD and EED Research Notes
5. HWLD Collected Materials

#### I-II. Personal Papers

##### A. Personal Materials

1. Diaries
2. Academic Life
3. Writings and speeches
4. Travel
5. Other

##### B. Correspondence

1. Outgoing
2. Incoming
3. Miscellaneous
4. Copies

##### C. Legal Career

1. Legal Cases
2. Associated Materials

##### D. RHD III Legal and Financial Records

##### E. RHD III Property

1. Cambridge House
2. Manchester House

##### F. Dana Family Records

1. Correspondence and Accounts
2. Trusts
3. Individuals
4. Properties
  - a) Boston Property
  - b) Cambridge Property
  - c) Manchester Property
5. Correspondence – Dana Family Manuscripts
6. Publications
7. Richard Henry Dana, Sr. (1787-1879) Writings
8. Memorials and Burials

##### G. Reform Activities

1. Civil Service Reform
2. Ballot Reform
3. Tax Reform

H. Organizations

1. Alumni Affairs
2. Cambridge Historical Society
3. Citizens' Committee on Charles River Bridges
4. Committee on Charles River Dam
5. Episcopal Church Affairs
6. Mayesville Institute
7. New England Conservatory
8. Republican Party
9. Cambridge Casino

I. Collected Materials

J. Edith (Longfellow) Dana<sup>4</sup>

K. Helen (Ford) Mumford Dana

II. Photographic Materials

---

<sup>4</sup> See papers of the Longfellow family which includes personal papers of Edith Longfellow Dana, (LONG 27930).

## ***SUBCOLLECTION AND SERIES DESCRIPTIONS***

### ***Subcollection I. Manuscripts, Part I. Research***

The first subcollection contains records created and collected by Henry Wadsworth Longfellow Dana, Elizabeth Ellery Dana and Helen (Ford) Mumford Dana. Most of the materials were collected after RHD III's death.

#### *Series A. General Materials*

Most of the material in this series was gathered by HWLD and includes research that HWLD and other family members collected. Most of this series is arranged in date order.

##### *1. Biographical Materials*

These materials were mainly the result of HWLD's involvement with publishing a biography of his father, RHD III. The records include correspondence by HWLD, Bliss Perry (the author of the biography, *Richard Henry Dana, 1851-1931*), the Episcopal Theological School, publishing companies and others. Also included is a biographical sketch written for the Massachusetts Historical Society.

##### *2. Obituaries and Memorials*

This subseries includes obituaries and other materials related to the death of RHD III. Materials from a scrapbook compiled by HFMD (1865-1934) are also a part of this series. The scrapbook was mainly composed of letters of condolence written to HFMD after RHD III's death.

##### *3. Correspondence*

Correspondence includes mainly condolence letters written to HWLD and HFMD. Often research requests or a question about RHD III's involvement in civic and family genealogical research is the subject of these letters. Correspondents include Isabella Hazen Dana (1847-1934), the Cyclopedia of American Biography and H. Washburn of the Massachusetts Historical Society.

##### *4. HWLD and EED Research Notes*

These notes reflect the research that both HWLD and EED conducted including biographical timelines and a draft of EED's biography of RHD III that was later included in *The Dana Family in America*.

##### *5. HWLD Collected Materials*

The majority of this subseries consists of photostats collected by HWLD of RHD III's correspondence regarding his involvement in Civil Service Reform.

### ***Subcollection I. Manuscripts, Part II. Personal Papers.***

The papers RHD III created and collected comprise this subcollection. Many of the items, particularly those relating to RHD III's law practice and his involvement with Civil Service Reform, were numbered by RHD III and possibly by his legal secretaries. The catalogers used RHD III's numbering system to arrange the records.

The subcollection was arranged into eleven series described below:

*Series A. Personal Materials*

This series contains the more personal materials that belonged to RHD III. The records had little or no original order, so they were mainly organized by date. The series includes the typed diaries of RHD III dating from 1915-1930, writings and speeches, and materials related to his travels

*Series B. Correspondence*

RHD III's correspondence is organized as outgoing and incoming correspondence. This group of correspondence was not found in original order and was not annotated with RHD III's numbering system. Therefore, outgoing (letters written by RHD III) and incoming (letters received by RHD III) were organized in alphabetical order by the person who received them (outgoing) or by the person who sent them (incoming).

The number "16" was annotated by RHD III onto some of his correspondence. To maintain the original order of the records, the catalogers retained the numbering system.<sup>5</sup>

Bound copies of RHD III's outgoing correspondence from 1910-1911 are also a part of this series.

*Series C. Legal Cases*

The majority of the records in this series were found annotated with numbers, and the records were arranged in numerical order. Examples of cases represented in this series are: Cambridge Rapid Transit Commission #371, Massachusetts Infant Asylum #373 and family cases such as the Longfellow Estate at Nahant #165 and Samuel L. Longfellow Estate #301.

The majority of RHD III's legal records were found in their original envelopes. Catalogers carefully removed the records from their corresponding envelopes and then kept the envelopes with their corresponding records in each folder.

*Series D. RHD III Legal and Financial Records*

This series contains RHD III's personal legal and financial records including a 1929 copy of his will. Schedules of assets and tax accounts he shared with his wife are also included

---

<sup>5</sup> See: *Completion Report: Backlog Cataloging for Longfellow National Historic Site FY 2001 Archives* for further explanation of RHD III's numbering system.

in this series.

*Series E. RHD III Property*

Records relating to RHD III's properties in Cambridge and Manchester include plans for his property in Manchester, including the original drawings for the house and stable built in 1885, and records related to the sale of the property dating from 1920-1923.

*Series F. Dana Family Records*

In addition to handling legal cases for his family (see: *Series C. Legal Records*), RHD III collected and cared for other records of his family and their matters. RHD III joined his father's (Richard Henry Dana, Jr.) law practice in 1878 and took over many of his father's cases after RHD Jr. (1814-1882) left the practice to live in Europe. Many of the Dana family records were kept together by RHD Jr. for legal and familial information purposes. RHD III inherited these records along with the responsibility of his family's legal affairs. If RHD III annotated the records with a number, the number was documented by catalogers on the folder and in the collection listing in this finding aid. Since this group of papers had little original order, subseries are organized either alphabetically or by date.

This series documents RHD III's involvement in his family's accounts, trusts, wills and estates including those of Washington Allston (1779-1843) who married his aunt, Martha Remington (Dana) Allston (1784-1862), and records dealing with his father's income and the Lawrence vs. Dana case. RHD III also had in his possession land indentures dating from 1797-1844 and other records having to do with the Dana family properties in Boston, Cambridge and Manchester dating from 1797 to 1928.

The series also contains correspondence dealing with RHD III's handling of the Longfellow copyrights and his efforts to publish his father's (RHD, Jr.) speeches. He also collected the correspondence and poetry of his grandfather, Richard Henry Dana, Sr. (1787-1879) since he had planned on publishing more of his grandfather's work. Family memorials were also of interest to RHD III including those to Francis Dana (1777-1853) on the wall of Christ Church, Cambridge, the Longfellow Memorial in Washington, DC and the Anne Bradstreet Memorial Tablet in First Church, Cambridge. This series contains family records documenting these memorials.

Additional correspondence pertaining to Dana genealogy is located in Dana Family Papers box 3, folder 4.

*Series G. Reform Activities*

The bulk of the records of this series relate to RHD III's work in Civil Service Reform; the records are organized according to RHD III's numbering system and then in chronological order. The records include correspondence, news articles, and writings and speeches related to his work with Fourth Class Postmasters, Reform of Consular Service, Superannuation, Examinations of Higher Municipal Offices, the Massachusetts Civil

Service Reform Association and other organizations and cases.

RHD III was also interested in voting reform and successfully championed the use of the Australian Ballot. Correspondence regarding this subject and his interest in tax reform, and the Republican Party in general is also present in this series.

#### *Series H. Organizations*

Records in this series were arranged into subseries such as those created by RHD III's involvement with the various educational institutions he graduated from. In addition to these are records from the Cambridge Historical Society, the Citizens' Committee on Charles River Bridges and the Committee on the Charles River Dam, the Episcopal Church including documents revealing his involvement with the Episcopal Theological School, the Mayesville Institute, and the New England Conservatory. The records are organized alphabetically by organization, since no original order was present. Materials related to the Cambridge Casino, including its minutes, were added in the FY 2007 project.

#### *Series I. Collected Material*

Includes assorted materials collected by RHD III including calling cards and awards which are arranged alphabetically.

#### *Series J. Edith (Longfellow) Dana (1853-1915)*

Papers of Edith Longfellow Dana inevitably overlap those of her husband especially in the legal series. However, the majority of her personal papers are in her collection that is a part of the *Henry Wadsworth Longfellow Family Papers*. Series J is a cross-reference to that collection.

#### *Series K. Helen (Ford) Mumford Dana (1865-1934)*

The papers of RHD III's second wife, Helen (Ford) Mumford Dana, inevitably intersect those of her husband. Also, a scrapbook made by HFMD as a memorial to her husband is in the first series of this collection. The personal correspondence of HFMD is in this series as well as a drawing of a headstone for HFMD's memorial.

### ***Subcollection II. Photographic Materials***

Photographs that were separated from the collection in anticipation for the FY 1999, 2000 Photos cataloging project are in this group. In addition, other photographs that were found already separate from the papers were processed in the Photos cataloging project as part of these papers. Records in the accompanying Interior Collections Management System (ICMS) database describe the photographs at the item level. The full records are available at the site's archives, and selected fields comprise the descriptions in the photographs' finding aid, *Addendum: Photographs in the Elizabeth Ellery Dana (1846-1939) Personal Papers, 1829-1940, Richard Henry Dana III (1851-1931) Papers, 1797-1947, Dana Collected Correspondence, 1838-1938, and Dana Family Papers, 1661-1960.*

***Oversize Materials***

These items are grouped together because of their common size. All of the items are intellectually associated with Subcollection I, Parts I and II but are too large to be stored in standard legal-sized folders. They were removed from their original location, foldered and stored in oversize flat boxes. Items removed from their original location were replaced with an acid-free separation sheet indicating the oversize storage location. A copy of the sheet was placed with the item to cross-reference these materials.

The items are listed in the box and folder list of their associated subcollection. If an item was removed because of its size, the symbol “†” was listed to indicate an item was removed. In previous editions of this finding aid, oversize materials were described as Subcollection II. In this edition of the finding aid, they are listed der the series with which they are intellectually associated.

***PART 2:***

***BIOGRAPHICAL DATA***





## ***BIOGRAPHICAL NOTE***

### **Chronology**

- 1851 Born in Cambridge, Massachusetts 3 January
- 1865-1870 Attended St. Paul's School in New Hampshire
- 1870 Entered Harvard College
- 1874 Graduated Harvard, BA, Class Day Orator  
Entered Harvard Law School
- 1875-1876 Traveled abroad in Europe
- 1877 Completed Harvard Law School
- 1877 Began law practice with Brooks, Ball & Storey
- 1878 Married Edith Longfellow (1853-1915) 16 January  
Joined his father's law practice  
Helped to organize Associated Charities
- 1879 Richard Henry Dana IV [Dick] born 1 September (d. 1933)  
Sailed around Cape Horn to San Francisco, leaving 29 October
- 1880 Returned from California in March  
Trustee of New England Conservatory
- 1881 First meeting of Civil Service Reform League  
Henry Wadsworth Longfellow Dana [Harry] born 26 January (d. 1950)
- 1882 Father RHD Jr. died in Rome, Italy 6 January. RHD III afterward addressed as  
"Junior."
- 1883 Frances Appleton (Dana) de Rham born 25 May (d. 1933)
- 1884 Drafted Civil Service Reform Act for Massachusetts  
Allston Dana born 29 September (d. 1952)
- 1885 House in Manchester, Massachusetts built
- 1886 Edmund Trowbridge Dana [Ned] born 25 October (d.1981)
- 1887 House at 113 Brattle St., Cambridge built
- 1889 Drafted First Australian Ballot Act to be passed in the United States  
Trustee of Episcopal Theological School, Cambridge  
Delia Farley (Dana) Hutchinson born 2 October (d. 1989)
- 1890 President of Boston YMCA
- 1891 President of Trustees of New England Conservatory
- 1895 Article published: "Double Taxation in Massachusetts"
- 1901 Appointed to the Charles River Basin Commission by the Governor  
Member of the Board of Overseers of Harvard College
- 1903 Served as Commissioner on the Charles River Dam Committee
- 1906 First President of the Cambridge Historical Society (until 1916)
- 1910 Published his father's, Richard Henry Dana, Jr. (1815-1882), speeches in  
*Speeches for Stirring Times and Letters to a Son*
- 1911 Retired from law office at Congress Street  
Elected to Massachusetts Historical Society
- 1912-1913 Traveled to Europe
- 1913 Elected President of the National Civil Service Reform League
- 1915 Edith (Longfellow) Dana died at Manchester 21 July

|      |   |
|------|---|
| 1920 | Traveled to Europe  |
| 1921 | Published <i>Hospitable England in the Seventies</i>        |
| 1922 | Married Helen Sherwood (Ford) Mumford<br>Traveled to Europe |
| 1923 | Manchester property sold                                    |
| 1931 | Died in Cambridge, December 16                              |

### Richard Henry Dana III (1851-1931)

Richard Henry Dana III was born January 3, 1851, the fifth child of Richard Henry Dana, Jr. (1815-1882) and Sarah Watson Dana (1814-1907). He was the third male in the family to be named Richard Henry Dana. RHD III was educated at St. Paul's School in New Hampshire, Harvard College, class of 1874, and Harvard Law School, 1877.

RHD III enjoyed his years at St. Paul's and Harvard. He especially enjoyed his rowing career and maintained an active interest in both institutions throughout his life. He traveled to Europe for a year in 1875-1876 and later printed his travel diary, *Hospitable England in the Seventies* in 1921.

Richard Henry Dana III began his law practice in 1877 with Brooks, Ball & Storey and then joined his father's law practice in Boston at 30 Court St. in 1878. Although he moved his office location several times over the years, J.C. Joseph Flamand initially the "office boy," was a constant and invaluable presence.

In 1878 Richard Dana married Edith Longfellow (1853-1915), the second surviving daughter of the poet Henry Wadsworth Longfellow. Their first child, Richard Henry Dana IV was born in 1879 and in October of that same year Richard Dana sailed around Cape Horn to San Francisco. He returned across the continent in March of 1880 and resumed his law practice. Their other children were Henry Wadsworth Longfellow (1881), Frances Appleton (1883), Allston (1884), Edmund Trowbridge (1886) and Delia Farley (1889). Richard Dana and his wife Edith led a very social life. They enjoyed traveling a great deal and went to Europe several times in addition to trips up and down the eastern seaboard.

Upon his return from his California trip, Richard Dana began his life-long dedication to supporting charitable and educational institutions by helping to organize the Associated Charities. Among the many organizations he helped over his lifetime, one of the most prominent was the New England Conservatory of Music of which he served as trustee and eventually president from 1880 on. He also served as trustee and treasurer of the Episcopal Theological School until his death. In 1901 the Governor appointed him to the Charles River Basin Commission. He was the first president of the Cambridge Historical Society and a member of the Massachusetts Historical Society. He was a Fellow of the American Academy of Arts and Sciences and a member of Phi Beta Kappa.

Richard Dana's interest in Civil Service Reform was evident as early as 1874 when he was eloquent about the topic in his Class Oration as a Harvard undergraduate.<sup>6</sup> He was a popular

---

<sup>6</sup> Baccalaureate Sermons and Oration and Poem, Harvard University, 1874 (Addendum Box 1, folder 3).

public figure in the movement and spent a great deal of time traveling to speaking engagements and writing articles. Through his involvement in Civil Service Reform and other reform movements he became acquainted with Presidents Theodore Roosevelt, Taft, Coolidge and numerous other well-known politicians and reformers.

Upon the death of his father in 1882, Richard Dana became the patriarch of the Dana family and acted as legal executor, advisor and arbiter of family affairs. He served as executor of his father's estate and the Elizabeth Ellery (1789-1874) and Sarah Ann (1791-1874) Dana trusts. He spent a good deal of time and effort over the years in publishing his father's speeches, renovating the family tomb, and assisting Charles F. Adams and W.P. Cresson with their biographies. Through his father the family shared in the inheritance of the Dana property in Manchester, Massachusetts where Richard Dana later built a house for himself on Lot C in 1885. His many projects at Manchester included attempts to eradicate the mosquito and the fly. In 1887 he built a house at 113 Brattle St. in Cambridge next door to the Longfellow house on land given to him and Edith by her father.

In 1911 he left his law office on Congress St. and removed his papers to his home on Brattle Street. Richard Dana and Edith traveled to Europe for the last time in 1912-1913. Upon their return Richard resumed his active public life and was elected president of the National Civil Service Reform League in 1913.

Edith Longfellow died on July 21, 1915 at Manchester after a prolonged illness. Richard Dana was devastated and lonely but gradually resumed many of his interests and traveled to Europe again in 1920.

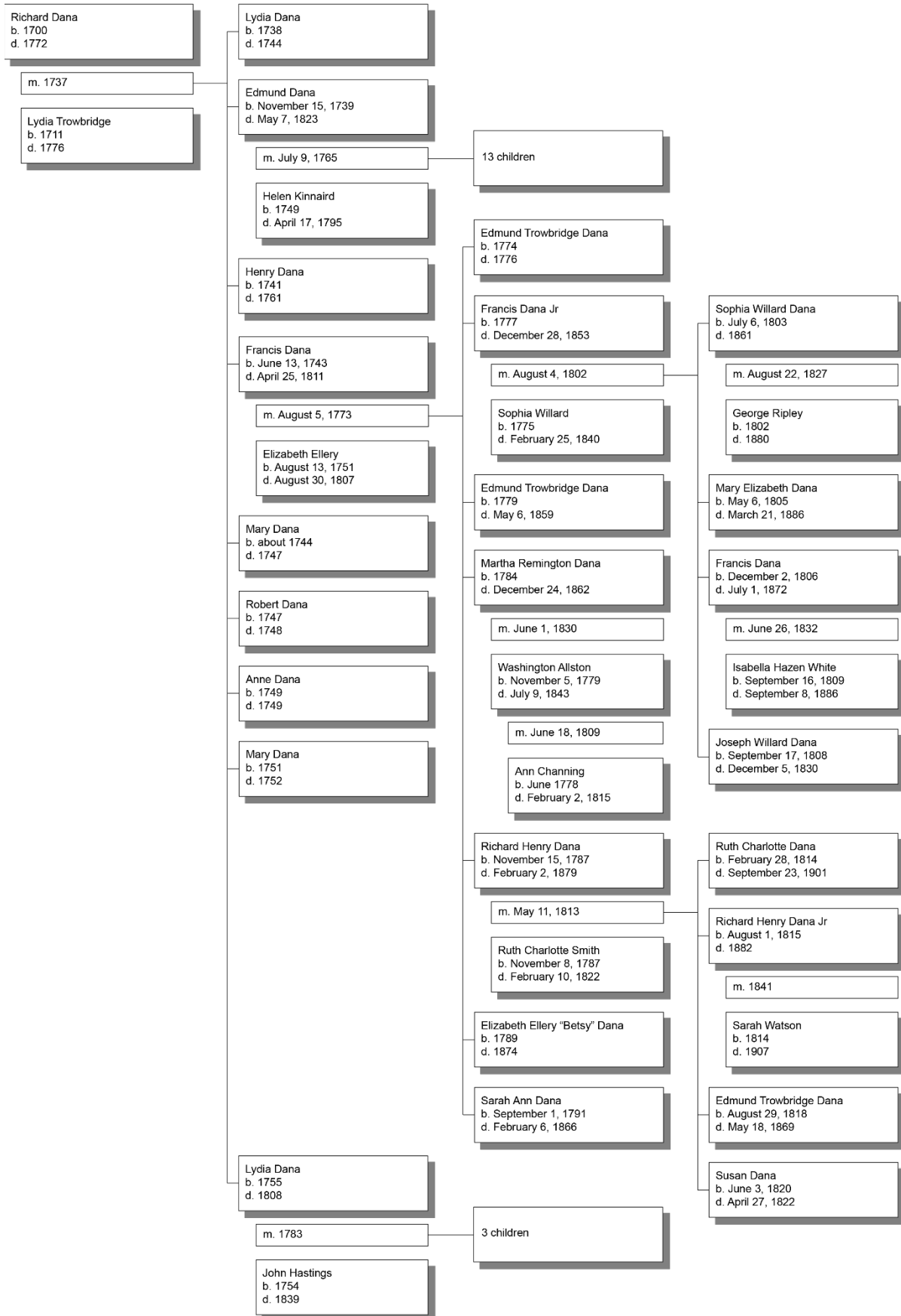
In 1921 he met Mrs. Helen Sherwood (Ford) Mumford of New York City. They were married February 25, 1922 and sailed for Italy in March. Upon their return they lived at 113 Brattle St. in Cambridge, maintained a busy social schedule and were able to travel to Europe every other summer.

Richard Dana continued to have an interest in national and world affairs until his death at age eighty on December 16, 1931.

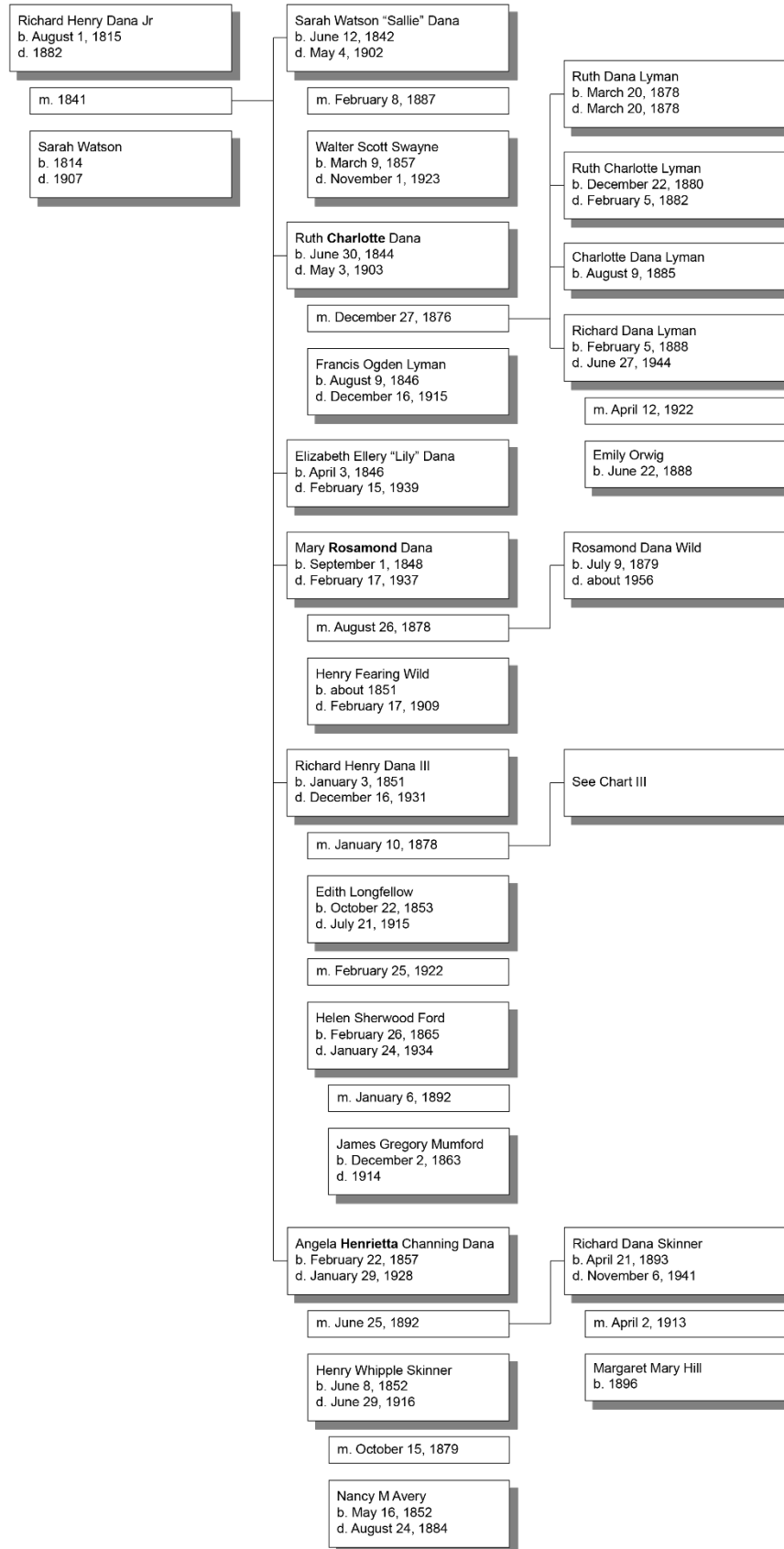
## ***GENEALOGICAL CHARTS***

The following pages show the Dana family trees for those members of the family most closely related to RHD III. See *Dana Family Papers: Collected Manuscripts, Genealogies, and Research Materials, 1661-1960 (Bulk Dates: 1750 – 1940)* for more genealogical information about the Dana family.

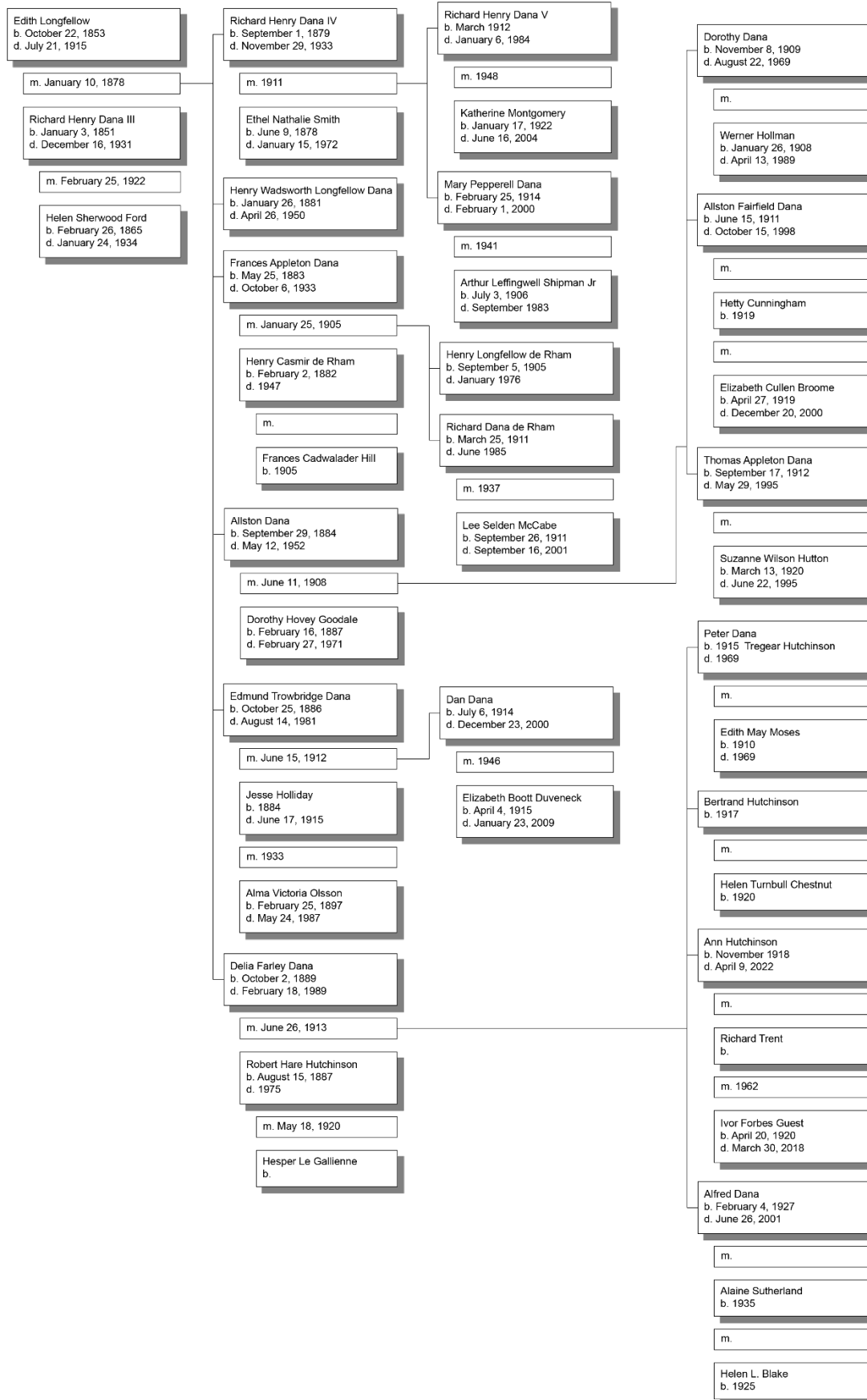
**Chart I. Richard Dana and Lydia Trowbridge**



**Chart II. Richard Henry Dana Jr. and Sarah Watson**



**Chart III. Richard Henry Dana III and Edith Longfellow**







***PART 3:***

***COLLECTION LISTING***

### **KEY TO SYMBOLS**

*The following abbreviations and symbols are used throughout the collection listing:*

EED = Elizabeth Ellery Dana [“Lily”] (1846-1939)

HWLD = Henry Wadsworth Longfellow Dana [“Harry”] (1881-1950)

RHD III = Richard Henry Dana III (1851-1931)

HFMD = Helen (Ford) Mumford Dana (1865-1934)

\* = Includes photograph(s)

† = See oversize materials

\* = Includes photograph(s)      † = See oversize materials

## ***SUBCOLLECTION I. MANUSCRIPTS, PART I. RESEARCH, 1862-1934***

### **Series A. General Materials, 1862-1934**

#### **1. Biographical Materials, 1929-1934, n.d.**

|  | <b>Box</b> | <b>Folder</b> |
|--|------------|---------------|
| Preparations for RHD III Biography, 1929 & 1932                            | 1          | 1             |
| Correspondence – Bliss Perry Biography, 1932                               | 1          | 2             |
| Correspondence – Bliss Perry Biography, 1933                               | 1          | 3             |
| Bliss Perry Biography, Circulars, and News article, 1933, and n.d.         | 1          | 4             |
| Bliss Perry Biography, Accounts, 1932-1934                                 | 1          | 5             |
| Entry from <i>Who's Who</i> , ca. 1930 <sup>7</sup>                        | 1          | 5a            |
| Episcopal Theological School Correspondence – RHD III Biography, 1932-1933 | 1          | 6             |
| Massachusetts Historical Society Biography, n.d.                           | 1          | 7             |

#### **2. Obituaries and Memorials, 1931-1934 (SEE ALSO ADDENDUM)<sup>8</sup>**

|  | <b>Box</b> | <b>Folder</b> |
|--|------------|---------------|
| Funeral Notice, 1931   | 1          | 8             |
| Funeral: Pallbearers and Hymns, 1931   | 1          | 9             |
| Newspaper Obituaries, 1931 (Part 1 of 2)   | 1          | 10            |
| Newspaper Obituaries, 1931 (Part 2 of 2)   | 1          | 11            |
| HFMD (1865-1934) – RHD III Memorial Scrapbook, 1931-1932, [Separation Sheets] <sup>†</sup> | 1          | 12            |
| Oversize material removed from box 1, folder 12 [scrapbook cover]                          | O1         | 1             |
| Scrapbook pages – Memorial from St. Paul's School, 1865-1870 <sup>9</sup>                  | O2         | 1             |
| Scrapbook pages – Correspondence, 1931-1932 <sup>10</sup>                                  | O2         | 2             |
| Scrapbook pages – Newsclippings and Telegrams, 1931-1932 <sup>11</sup>                     | O2         | 3             |
| HFMD (1865-1934) – RHD III Memorial Scrapbook, 1931-1932, Correspondence, 1931             | 1          | 13            |
| HFMD (1865-1934) – RHD III Memorial Scrapbook, 1931-1932, Correspondence, 1932             | 1          | 14            |
| HFMD (1865-1934) – RHD III Memorial Scrapbook, 1931-1932, Correspondence, n.d.             | 1          | 15            |
| HFMD (1865-1934) – RHD III Memorial Scrapbook, 1931-1932, Photographs, n.d.*               | 1          | 16            |
| "Extract from Annual Report of the Century Association for the Year 1932" [2 copies]       | 1          | 17            |

<sup>7</sup> Removed from LONG 15904, *Who's Who in America*, 1930-1931.

<sup>8</sup> See also Box 13, Folder 18 and EED Papers Box 10, Folder 9.

<sup>9</sup> Oversize material removed from box 1, folder 12

<sup>10</sup> Oversize material removed from box 1, folder 12

<sup>11</sup> Oversize material removed from box 1, folder 12

|   | Box | Folder |
|---|-----|--------|
| HFMD (1865-1931) – RHD III Memorial Scrapbook, 1931-1932<br>"Extract from Annual Report of the Century Association for the<br>Year 1932" [2 copies] | 1   | 18     |
| HFMD (1865-1931) – RHD III Memorial Scrapbook, 1931-1932,<br>Episcopal Theological School, Correspondence and Bulletin, 1932 <sup>12</sup>          | 1   | 19     |
| News Article – Massachusetts Civil Service Association and Auxiliary<br>– RHD III Memorial Meeting, 1932  | 1   | 20     |
| "Massachusetts Civil Service Association and the Women's<br>Auxiliary" by William Dudley Foulke, 1932   | 1   | 21     |
| St. Paul's School Alumni – Correspondence and Bulletin, Memorial<br>by Alexander Whiteside, 1932  | 1   | 22     |
| Harvard College, Class of 1874 Fifteenth Report, 1934 [2 copies] <sup>13</sup>  | 1   | 23     |

### 3. Correspondence, 1930-1933

|   | Box | Folder |
|---|-----|--------|
| Correspondence to HWLD, 1930-1931   | 1   | 24     |
| Correspondence to HWLD, 1931-1932, n.d.   | 1   | 25     |
| Correspondence to HFMD (1865-1934) #16 & 16b <sup>3</sup> , 1931-1932 <sup>14</sup> | 1   | 26     |
| Letter to EED from Lena Barry, 1932   | 1   | 27     |
| EED Correspondence re: H. Washburn Biography, 1933                                  | 1   | 28     |

### 4. HWLD and EED Research Notes, n.d.

|  | Box | Folder |
|--|-----|--------|
| HWLD and EED Biographical and Genealogical Notes, n.d.                             | 1   | 29     |
| HWLD and EED Biographical and Genealogical Notes, n.d.<br>[oversize] <sup>15</sup> | O2  | 4      |

### 5. HWLD Collected Materials, 1862-1934<sup>16</sup>

|   | Box | Folder |
|---|-----|--------|
| Cambridge Dramatic Club, 1862 [photostat]                                 | 2   | 1      |
| RHD III Letter to Dr. Gordon, 1885 [photostat]                            | 2   | 2      |
| Civil Service Reform Correspondence, 1885-1890 [photostats]               | 2   | 3      |
| RHD III Correspondence to Mrs. James (Annie) Fields, 1887<br>[photostats] | 2   | 4      |
| Cambridge Historical Society Annual Meeting, 1932                         | 2   | 5      |
| Cover – Sale Catalog, "Books...Owned by the Late Mrs. [RHD III],"<br>1934 | 2   | 6      |
| "Family Record," n.d. [photostats]  | 2   | 7      |

<sup>12</sup> Another copy of this issue of the *Bulletin* is in the EED Personal Papers, Box 10, Folder 9.

<sup>13</sup> LONG 26125 and LONG 16558.

<sup>14</sup> The superscript number "16b<sup>3</sup>" was a part of RHD III's numbering system and does not refer to a footnote.

<sup>15</sup> Oversize material removed from box 1, folder 29

<sup>16</sup> See also Harvard University catalogues that EED inscribed and possibly collected, Addendum Box 1 and the tax reform pamphlet, Box 25, Folder 16.

|  | <b>Box</b> | <b>Folder</b> |
|--|------------|---------------|
| Book Catalog Fragments, n.d.   | 2          | 8             |
| Image of RHD, Jr. (1815-1882) and Copy of March 1882 Letter from RHD III to Sarah (Watson) Dana (1814-1907) re: poor health of HWL, n.d. | 2          | 9             |
| Letter to Rev. Givens from Unknown, n.d. [reversed photostat]  | 2          | 10            |

## ***SUBCOLLECTION I. MANUSCRIPTS, PART II. PERSONAL PAPERS, 1797-1947***

### **Series A. Personal Materials, 1867-1931**

#### **1. Diaries, 1915-1930**

|                                   | <b>Box</b> | <b>Folder</b> |
|-----------------------------------|------------|---------------|
| RHD III Diary, 1915               | 2          | 11            |
| RHD III Diary, 1916               | 2          | 12            |
| RHD III Diary, 1917               | 2          | 13            |
| RHD III Diary, 1918 (Part 1 of 2) | 2          | 14            |
| RHD III Diary, 1918 (Part 2 of 2) | 2          | 15            |
| RHD III Diary, 1919               | 2          | 16            |
| RHD III Diary, 1920               | 2          | 17            |
| RHD III Diary, 1921               | 2          | 18            |
| RHD III Diary, 1922               | 2          | 19            |
| RHD III Diary, 1923               | 3          | 1             |
| RHD III Diary, 1924               | 3          | 2             |
| RHD III Diary, 1925               | 3          | 3             |
| RHD III Diary, 1926               | 3          | 4             |
| RHD III Diary, 1927               | 3          | 5             |
| RHD III Diary, 1927 [Duplicates]  | 3          | 6             |
| RHD III Diary, 1928 <sup>17</sup> | 3          | 7             |
| RHD III Diary, 1929               | 3          | 8             |
| RHD III Diary, 1930               | 3          | 9             |

#### **2. Academic Life, 1867-1874<sup>18</sup>**

|   | <b>Box</b> | <b>Folder</b> |
|---|------------|---------------|
| St. Paul's Report Card, 1867  | 3          | 10            |
| St. Paul's School – "Map of the Southern States Drawn by R.H. Dana," n.d. <sup>†</sup>        | 3          | 11            |
| St. Paul's School – "Map of the Southern States Drawn by R.H. Dana," [oversize] <sup>19</sup> | O2         | 4             |
| Catalogue of the Officers and Students of Harvard University, 1870 [2 copies] <sup>20</sup>   | A1         | 1             |

<sup>17</sup> Includes typed excerpt from 7-9 December [1928] describing Alice Longfellow's death; this excerpt was moved from the Curatorial Files, Research Cards "Furnishings Plan/ Family Biographies." EED collected selections of the transcript of the diaries; see Folder 20, "RHD III Diary, 1921-1929 [EED copy of transcript], ca. 1931," EED Papers, Addendum Box 3.

<sup>18</sup> See also separately cataloged diplomas and certificates: two School Achievement Certificates, 1867 (LONG 21554 & 21555), Diploma, Bachelor of Arts, Harvard College, 1874 (LONG 21548), and Harvard Athletic Association Certificate, 1874 (LONG 21553).

<sup>19</sup> Oversize material removed from box 3, folder 11

<sup>20</sup> Includes LONG 26120 with EED inscription.

|  | Box | Folder |
|--|-----|--------|
| Catalogue of the Officers and Students of Harvard University, 1871 <sup>21</sup>   | A1  | 2      |
| Harvard College – Hasty Pudding, 1873-1874 <sup>†</sup>                            | 3   | 12     |
| Harvard College – Hasty Pudding [oversize] <sup>22</sup>                           | O2  | 4      |
| Harvard College – Class Day Program, 1874  | 3   | 13     |
| Baccalaureate Sermons and Oration and Poem, Harvard University, 1874 <sup>23</sup> | A1  | 3      |
| Catalogue of the Officers and Students of Harvard University, 1874 <sup>24</sup>   | A1  | 4      |
| Harvard Index, 1874 <sup>25</sup>  | A1  | 5      |
| Harvard University Catalogue, 1876 <sup>26</sup>                                   | A1  | 6      |

### 3. Writings and Speeches, 1896-1931, n.d.

|   | Box | Folder |
|---|-----|--------|
| "Memorial Day Service, Boston Young Men's Christian Union," 1896 [Program]  | 3   | 14     |
| "Is an Aristocracy of Wealth Better Than An Aristocracy of Birth?" by R.H. Dana, <i>Boston Globe</i> , 1897                           | 3   | 15     |
| "Address at the One Hundredth Anniversary of the Town of Dana" by R.H. Dana, 1901   | 3   | 16     |
| Unitarian Club of Arlington, Annual Ladies Night, 1902 [program]  | 3   | 17     |
| Gov. Thomas Dudley Assoc. "Richard Henry Dana, Poet," 1903  | 3   | 18     |
| Address...One Hundredth Anniversary...Louis Agassiz, 1907   | 3   | 19     |
| "Century and a Half: Address of RHD III at Celebration of 150 <sup>th</sup> Anniversary of Christ Church," October 1911 <sup>27</sup> | 3   | 19a    |
| "Some Personal Reminiscences of Longfellow," 1912 [draft] <sup>28</sup>   | 3   | 20     |
| <i>The Trent Affair, An Aftermath</i> , #390 & #392, correspondence and 3 copies, 1911-1912   | 3   | 21     |
| Condensed Version of <i>Pendennis</i> , Review by RHD III, <i>Boston Post</i> 1919  | 3   | 22     |
| "William Brewster" by Richard Henry Dana, 1919  | 3   | 23     |
| "Richard H. Dana Writes of Cure for Ivy Poisoning," <i>North Shore Breeze</i> , Manchester, MA, 1921                                  | 3   | 24     |
| <i>The Reasons for Not Prosecuting Jefferson Davis</i> , 1931   | 3   | 25     |
| "Authority," n.d. [draft]   | 3   | 26     |

<sup>21</sup> Includes LONG 26121 with EED inscription.

<sup>22</sup> Oversize material removed from box 3, folder 12

<sup>23</sup> LONG 26145. Contains RHD III oration in which he discusses civil service reform.

<sup>24</sup> LONG 26122.

<sup>25</sup> LONG 26123.

<sup>26</sup> LONG 26124, LONG 26219 (front fragment). RHD III listed as law student.

<sup>27</sup> LONG 26441.

<sup>28</sup> See also Box 6, Folder 25.



**4. Travel, 1907**

|  | <b>Box</b> | <b>Folder</b> |
|--|------------|---------------|
| RHD Jr. Note re: RHD III Visit with Lord and Lady Kinnaird, ca. 1875 <sup>29</sup> | 3          | 26a           |
| European Trip, #276, Correspondence, 1907  | 3          | 27            |
| European Trip, #276, Correspondence, 1907 [oversize]                               | O11        | 1             |

**5. Other, 1887**

|  | <b>Box</b> | <b>Folder</b> |
|--|------------|---------------|
| Museum of Fine Arts Loan, 1887           | 3          | 28            |
| Associated Materials, n.d. <sup>30</sup> | 3          | 29            |

**Series B. Correspondence, 1860-1931****1. Outgoing, 1860-1931<sup>31</sup>**

|   | <b>Box</b> | <b>Folder</b> |
|---|------------|---------------|
| A-D, 1886-1916 [photostat]  | 4          | 1             |
| Dana, Edith (Longfellow) (1853-1915), 1895-1911, n.d.                             | 4          | 2             |
| Dana, Elizabeth Ellery (1846-1939), 1860-1878                                     | 4          | 3             |
| Dana, Elizabeth Ellery (1846-1939), 1879-1888                                     | 4          | 4             |
| Dana, Elizabeth Ellery (1846-1939), 1889-1899                                     | 4          | 5             |
| Dana, Elizabeth Ellery (1846-1939), 1900-1910                                     | 4          | 6             |
| Dana, Elizabeth Ellery (1846-1939), 1911-1915                                     | 4          | 7             |
| Dana, Elizabeth Ellery (1846-1939), 25 October 1912 [oversize] <sup>32</sup>      | O2         | 4             |
| Dana, Elizabeth Ellery (1846-1939), 1916-1921                                     | 4          | 8             |
| Dana, Elizabeth Ellery (1846-1939), 1922-1931, n.d.                               | 5          | 1             |
| Dana Family, 1866-1923  | 5          | 2             |
| Dana, Helen (Ford) Mumford (1865-1934), 1927                                      | 5          | 3             |
| Dana, Henry Wadsworth Longfellow (1881-1950), 1899-1931, n.d. <sup>33</sup>       | 5          | 4             |
| Dana, Henry Wadsworth Longfellow (1881-1950), 1899-1918, n.d. (Accession LONG-70) | 5          | 5             |
| Dana, Richard Henry Sr. (1787-1879), 1865-1876                                    | 5          | 6             |
| Dana, Richard Henry Jr. (1815-1882), 1867-1881                                    | 5          | 7             |
| Dana, Richard Henry IV (1879-1933), 1894  | 5          | 8             |
| Dana, Ruth Charlotte (1814-1901), 1875-1901                                       | 5          | 9             |
| Dana, Sarah (Watson) (1815-1907), 1865-1886 <sup>† 34</sup>                       | 5          | 10            |
| Dana, Sarah (Watson) (1815-1907), 24 March 1882 [oversize] <sup>35</sup>          | O2         | 5             |

<sup>29</sup> Moved from LONG 15918, RHD III, *Hospitable England in the Seventies*, 1921.

<sup>30</sup> Item moved from LONG 11818, George Henry Preble, *Our Flag*, 1872.

<sup>31</sup> See also HWLD Papers for letters to HWLD.

<sup>32</sup> Oversize material removed from box 4, folder 7

<sup>33</sup> See also HWLD Papers Box 6, Folder 6.

<sup>34</sup> March 24, 1882 describes final hours of Henry Wadsworth Longfellow (1807-1882).

<sup>35</sup> Oversize material removed from box 5, folder 10

|   | Box | Folder |
|---|-----|--------|
| Dana, Sarah (Watson) (1814-1907), 1887-1907, n.d.         | 5   | 11     |
| DeRham, Frances (Dana) (1883-1933), 1912 & 1933           | 5   | 12     |
| E – H, 1888-1928  | 5   | 13     |
| L, 1905-1911  | 5   | 14     |
| Longfellow, Henry Wadsworth (1807-1882), 1877-1881        | 5   | 15     |
| Lyman, Ruth Charlotte (Dana) (1844-1901), 1866-1885, n.d. | 5   | 16     |
| M – S, 1904-1910, n.d.                                    | 5   | 17     |
| Swayne, Sarah Watson (Dana) (1842-1902), 1860-1891, n.d.  | 5   | 18     |
| U – Y, 1906-1913  | 5   | 19     |
| Wild, Mary Rosamond (Dana) (1848-1937), 1875-1912         | 5   | 20     |
| Unknown, 1878-1922, n.d.                                  | 6   | 1      |

## 2. Incoming, 1882-1931

|   | Box | Folder |
|---|-----|--------|
| A – D, 1882-1931, n.d. <sup>†</sup>                                   | 6   | 2      |
| De Normandie, James, 4 Dec. 1905 [oversize] <sup>36</sup>             | O2  | 5      |
| Dana, Elizabeth Ellery (1846-1939), 1929, n.d.                        | 6   | 3      |
| Dana, Richard Henry IV (1879-1933), 1905                              | 6   | 4      |
| E – L, 1883-1931, n.d. <sup>37</sup>                                  | 6   | 5      |
| Lyman, Ruth Charlotte (Dana) (1844-1903), 1883                        | 6   | 6      |
| M – S, 1892-1931, n.d. <sup>38</sup>                                  | 6   | 7      |
| Skinner, Angela Henrietta Channing (Dana) (1857-1928), 1890           | 6   | 8      |
| T – Y, 1890-1927, n.d. <sup>39</sup>                                  | 6   | 9      |
| Wild, Mary Rosamond (Dana) (1848-1937), 1908 & 1929 <sup>40</sup>     | 6   | 10     |
| Unknown, 1893 and 1930  | 6   | 11     |
| Correspondence to RHD III in the HWLD Papers [cross-reference folder] | 6   | 11a    |

## 3. Miscellaneous, 1881-1931<sup>41</sup>

|                                      | Box | Folder |
|--------------------------------------|-----|--------|
| Ballot Reform #16, 1905-1914         | 6   | 12     |
| Cambridge Hospital #16, 1915         | 6   | 13     |
| Cambridge Affairs #16, 1910-1918     | 6   | 14     |
| Cambridge Taxes #16, 1904-1911       | 6   | 15     |
| Charles River Bridge #16, 1912, n.d. | 6   | 16     |

<sup>36</sup> Oversize material removed from box 6, folder 2

<sup>37</sup> See HWLD Papers Box 116, Folder 20 for letter from W.A. Frisbie re: Hiawatha and Minnehaha Falls.

<sup>38</sup> Includes LONG 26002, 1905 letter from Middlesex County Commissioners and February 1918 letter from Walter Swayne. See HWLD Papers Box 83, Folder 1 for letters from K.Gray and Curtis Guild; see HWLD Papers Box 86, Folder 5 for letter from J. Quincy.

<sup>39</sup> See also HWLD Papers Box 88, Folder 5 for letter from Henry White.

<sup>40</sup> See also correspondence relating to the New England Conservatory in Series H. Organizations (Box 29, Folder 20).

<sup>41</sup> Correspondence labeled according to RHD III's numbering system as 16 was a miscellaneous category. This group of correspondence was kept together to maintain original order of RHD III's filing system.

|  | <b>Box</b> | <b>Folder</b> |
|--|------------|---------------|
| Civil Service Reform #16, 1881-1916                              | 6          | 17            |
| Dana Family, #16, 1906-1915                                      | 6          | 18            |
| Dana, Richard Henry Jr. (1815-1882) #16, 1912-1914 <sup>42</sup> | 6          | 19            |
| Episcopal Church #16, 1910-1916                                  | 6          | 20            |
| Financial #16, 1907-1912   | 6          | 21            |
| Harvard #16, 1906-1931   | 6          | 22            |
| Images of RHD III #16, 1906-1911                                 | 6          | 23            |
| Insect Control #16, 1911-1912                                    | 6          | 24            |
| Longfellow Reminiscences #16, 1902-1914 <sup>43</sup>            | 6          | 25            |
| Massachusetts Affairs #16, 1905-1915                             | 6          | 26            |
| Mexican Affairs #16, 1914-1916                                   | 6          | 27            |
| New England Conservatory #16, 1912-1916                          | 6          | 28            |
| Organizations #16, 1904-1916                                     | 6          | 29            |
| Peace #16, 1905-1915 <sup>†</sup>                                | 6          | 30            |
| Peace #16 [oversize] <sup>44</sup>                               | O2         | 5             |
| Speaking Engagements and Writings #16, 1907-1915, n.d.           | 6          | 31            |
| Additional #16, 1911-1916 <sup>45</sup>                          | 6          | 32            |
| Collected Material #16, n.d.                                     | 6          | 33            |
| Fragment re: International Law, n.d.                             | 6          | 33a           |

#### 4. Copies, 1910-1911

|  | <b>Box</b> | <b>Folder</b> |
|--|------------|---------------|
| Bound Copies (Indexed), 1910-1911 [cross-reference folder] <sup>46 †</sup> | 6          | 34            |
| Bound Volume – Copies of Outgoing Correspondence, Oct. 1910-<br>June 1911  | O12        |               |

### Series C. Legal Career, 1865-1912

#### 1. Legal Cases, 1865-1912

|   | <b>Box</b> | <b>Folder</b> |
|---|------------|---------------|
| Greenleaf Trust (including #2 and #3), 1870-1910, n.d.  | 7          | 1             |
| Greenleaf Trust (including #2 and #3) – Deed for land on Ash<br>Street, 1870 [oversize] <sup>47</sup> | O2         | 5             |
| Myra A. Greeley Estate #4, 1904-1906, n.d.  | 7          | 2             |
| George Curtis Estate (including #234), 1865-1891, n.d. (Part 1 of<br>2) <sup>†</sup>                  | 7          | 3             |
| George Curtis Estate (including #234), 1865-1891, n.d. (Part 2 of<br>2) <sup>†</sup>                  | 7          | 4             |

<sup>42</sup> Includes information re: Shadrach Minkins Rescue Case.

<sup>43</sup> See also Box 3, Folder 20.

<sup>44</sup> Oversize material removed from box 6, folder 30

<sup>45</sup> Includes April 1916 telegram from Theodore Roosevelt.

<sup>46</sup> See Oversize Box 12 for Bound copies.

<sup>47</sup> Oversize material removed from box 7, folder 1

|  | Box | Folder |
|--|-----|--------|
| George Curtis Estate (including #234) [oversize] <sup>48</sup> | O2  | 6      |
| George Curtis Estate (including #234) [oversize] <sup>49</sup> | O3  | 1      |
| George Curtis Estate (including #234) [oversize] <sup>50</sup> | O3  | 2      |
| George Curtis Estate (including #234) [oversize] <sup>51</sup> | O3  | 3      |
| "Concordia" #50 ½, 1872-1878, n.d.†                            | 7   | 5      |
| "Concordia" #50 ½ [oversize]                                   | O3  | 3      |
| "Concordia" #50 ½ [oversize]                                   | O3  | 4      |
| "Concordia" #50 ½ [oversize]                                   | O11 | 1      |
| Coburn vs. Adams #53, 1883, n.d.†                              | 7   | 6      |
| Coburn vs. Adams #53 [oversize]                                | O3  | 4      |
| Puy-Buffat vs. D. D. Kelly and Son #55 & #56, 1883†            | 7   | 7      |
| Puy-Buffat vs. D. D. Kelly and Son #55 & #56 [oversize]        | O3  | 4      |
| Puttingill and Everett #57, 1883                               | 7   | 8      |
| F.W.S. Brawley vs. Wm. F. Brewster #58, 1875-1887, n.d.        | 7   | 9      |
| M. Klint vs. M. Flamand #59, 1883-1886, n.d.†                  | 7   | 10     |
| M. Klint vs. M. Flamand #59 [oversize]                         | O3  | 4      |
| Francis A. Smith vs. Daniel L. Milliken #60, 1878-1885, n.d.   | 7   | 11     |
| Estate of James Dowd #61, 1884, n.d.                           | 7   | 12     |
| Carissand vs. Chotteau #62, 1884, n.d.                         | 7   | 13     |
| C.F. Morse Lease #65, 1884, n.d.†                              | 7   | 14     |
| C.F. Morse Lease #65 [oversize]                                | O3  | 4      |
| E.C. Hernandez #67, 1882-1884, n.d.†                           | 7   | 15     |
| E.C. Hernandez #67 [oversize]                                  | O3  | 4      |
| Mrs. E.C. Atkinson, Will #68, 1883, n.d.†                      | 7   | 16     |
| Mrs. E.C. Atkinson, Will #68 [oversize]                        | O4  | 1      |
| Chas. Tourneur #70, 1883, n.d.                                 | 7   | 17     |
| Henri Verleije #71, 1883, n.d.                                 | 8   | 1      |
| Belschazzar's Feast #73, n.d. [empty envelope]                 | 8   | 2      |
| Lesson & Co. #78 ½, 1878-1880†                                 | 8   | 3      |
| Lesson & Co. #78 ½ [oversize]                                  | O4  | 1      |
| Geo. A. Haines in re: A.O. Brewster #74, 1881, n.d.            | 8   | 4      |
| Mrs. Mann [Mrs. Ella M. Mann] #75, 1880-1881, n.d.             | 8   | 5      |
| Estate of Manoel Alvarnas #76, 1884, n.d.                      | 8   | 6      |
| Annie Lyons #77, 1884 [Lyons vs. Donovan], n.d. †              | 8   | 7      |
| Annie Lyons #77, 1884 [Lyons vs. Donovan] [oversize]           | O4  | 1      |
| M.J. de Avellar, Jr. #78 & #80, 1884, n.d.                     | 8   | 8      |
| William. L. Dolbeare #81, 1884, n.d.                           | 8   | 9      |
| Hernandez v. Clarke #82, 1884, n.d.                            | 8   | 10     |
| James T. Jefferds #83, 1884, n.d.                              | 8   | 11     |
| Carossi [Lottie Louisa Carossi vs. Peter Graffam] #84, n.d.    | 8   | 12     |

<sup>48</sup> Oversize materials removed from box 7, folder 3

<sup>49</sup> Oversize materials removed from box 7, folder 3

<sup>50</sup> Oversize materials removed from box 7, folder 3

<sup>51</sup> Oversize materials removed from box 7, folder 4

|   | <b>Box</b> | <b>Folder</b> |
|---|------------|---------------|
| Heloise Calmel vs. Joshua G. Beals #85, 1884, n.d.†                               | 8          | 13            |
| Heloise Calmel vs. Joshua G. Beals #85 [oversize]                                 | O4         | 1             |
| Bayliss vs. Cunningham Co. #86, 1883-1885, n.d.†                                  | 8          | 14            |
| Bayliss vs. Cunningham Co. #86 [oversize]   | O4         | 1             |
| E. Bary vs. Forbes L.M. Co. #87, 1884, n.d.                                       | 8          | 15            |
| Michael Gunning vs. Ellen F. Allen #102, 1885, n.d.                               | 8          | 16            |
| Julia Hamilton vs. William Moore & Estate of Sarah Moore #126, n.d.               | 8          | 17            |
| Young Men's Christian Assoc. Tax Question #127, n.d. [empty envelope]             | 8          | 18            |
| Edward J. Mason #128, #135-#138, 1886-1887, n.d.†                                 | 8          | 19            |
| Edward J. Mason #128, #135-#138 [oversize]  | O4         | 1             |
| William D. (or D.W.) Williams vs. Lillie A. Davis #129, 1886-1887, n.d.†          | 8          | 20            |
| William D. (or D.W.) Williams vs. Lillie A. Davis #129 [oversize]                 | O4         | 1             |
| Maria Higgins #130, 1886, n.d.†   | 8          | 21            |
| Maria Higgins #130 [oversize]   | O4         | 1             |
| Francis Howell #131, 1886, n.d.   | 8          | 22            |
| Pierre vs. Longuemare #132, 1886, n.d.  | 8          | 23            |
| Thomas Owens #133, n.d.   | 8          | 24            |
| Daniel L. Milliken #139, 1879-1887, n.d.†   | 8          | 25            |
| Daniel L. Milliken #139 [oversize]  | O4         | 2             |
| Mrs. Schneider #140, 1886   | 8          | 26            |
| Mon. E. Meschine #145, 1887†  | 8          | 27            |
| Mon. E. Meschine #145, 1887 [oversize]  | O4         | 2             |
| Frederic W. Smith, Jr. #147, 1886-1889, n.d.                                      | 8          | 28            |
| West End Street Railway Co. #153, 1887 & n.d. †                                   | 8          | 29            |
| West End Street Railway Co. #153 [oversize]                                       | O4         | 2             |
| St. Andrew's Chapel, Trinity #154, 1887, n.d.†                                    | 8          | 30            |
| E.C. Hernandez #156, 1887, n.d.   | 8          | 31            |
| E.J. Mason vs. Mrs. E.H. Elsworth #158, n.d.                                      | 8          | 32            |
| E. Sullivan vs. F.W. Smith, Jr. et al. #161, 1887, n.d.                           | 8          | 33            |
| Charles P. Cook vs. F.W. Smith et als. #163, 1887                                 | 8          | 34            |
| Longfellow Estate at Nahant #165, 1887-1888, n.d.                                 | 8          | 35            |
| RHD III, Admin. vs. Ben. F. Hayes, Trustee (Eliza M. Judkins Estate) #166, 1887-1 | 8          | 36            |
| Bertha Ruther vs. Mrs. O.A. Taft, Jr. #167, 1887-1888, n.d.†                      | 8          | 37            |
| Bertha Ruther vs. Mrs. O.A. Taft, Jr. #167 [oversize]                             | O4         | 2             |
| Charles Wood vs. C.J. Catton, #168, 1888  | 8          | 38            |
| Allie Stevens vs. W. John Haines #169, 1871-1890, n.d.†                           | 9          | 1             |
| Allie Stevens vs. W. John Haines #169 [oversize]                                  | O4         | 2             |
| A. Vasseur vs. Druggist Novelty Co. #171, 1888                                    | 9          | 2             |
| Bernice May Allen #173, n.d. [empty envelope]                                     | 9          | 3             |

|  | Box | Folder |
|--|-----|--------|
| Frederick M. Smith, Jr. #178, 1888, n.d.   | 9   | 4      |
| Cambridge Casino #182, 1882-1895, n.d. <sup>52 †</sup>                           | 9   | 5      |
| Cambridge Casino #182 [oversize]   | O4  | 3      |
| Timothy O'Reilly vs. Mrs. Cyrus Brewer #182 ½, 1888, n.d.                        | 9   | 6      |
| Timothy O'Reilly vs. Mrs. Cyrus Brewer #182 ½ [oversize]                         | O4  | 3      |
| William Cogan vs. J.P. Barnard #183, 1888, n.d. <sup>†</sup>                     | 9   | 7      |
| William Cogan vs. J.P. Barnard #183 [oversize]                                   | O4  | 3      |
| M.W. Gould, No. 65,054, Suffolk Probate #184, 1887-1891, n.d. <sup>†</sup>       | 9   | 8      |
| M.W. Gould, No. 65,054, Suffolk Probate #184 [oversize]                          | O4  | 3      |
| Jacob Rider vs. John Riley #186, 1887-1889, n.d.                                 | 9   | 9      |
| Patrick Clancy #189, n.d.  | 9   | 10     |
| L. Francois, Maitre & Co. vs. O.A. Whitmore #193, 1888-1889, n.d.                | 9   | 11     |
| Charles McCarthy #194, 1888, n.d.  | 9   | 12     |
| John P. Barnard vs. E.J. Britton & James B. Ayer, Trustee #195, 1888, n.d.       | 9   | 13     |
| E.J. Britton vs. F.A. Frigueletti #195 ½, 1889, n.d.                             | 9   | 14     |
| Joseph Johnson vs. Bristol Ice Co. #196, 1888-1889, n.d. <sup>†</sup>            | 9   | 15     |
| Joseph Johnson vs. Bristol Ice Co. #196 [oversize]                               | O4  | 3      |
| [Promissory] Notes of F.W. Smith to Greely S. Curtis [#197], 1886                | 9   | 16     |
| Camp Asquam - Winthrop Tisdale Talbot #268, 1905-1906, n.d. <sup>†</sup>         | 9   | 17     |
| Camp Asquam - Winthrop Tisdale Talbot #268 [oversize]                            | O4  | 3      |
| Wm. Roberts vs. Herman Hartmann & N.E. Conservatory Trustees, #275, 1891         | 9   | 18     |
| Land Appraisal #277, 1906  | 9   | 19     |
| Miss Jennie W. May #278, n.d.  | 9   | 20     |
| D.C. Kellogg vs. Writer's Literary Bureau #280, 1891                             | 9   | 21     |
| Campaign of 1892 #281, 1890-1892, n.d.   | 9   | 22     |
| Thomas Whittemore, Estate of #282, 1891, n.d.                                    | 9   | 23     |
| Ballot Law of Massachusetts #284, 1891-1892, n.d.                                | 9   | 24     |
| New Party #285, 1891, n.d.   | 9   | 25     |
| John J. Connell vs. J. Frank Giles, N.E. Conservatory Trustee #286, 1891-1892    | 9   | 26     |
| W.A. Ford #288, 1891   | 9   | 27     |
| Liverpool Rail #288, 1889, n.d.  | 9   | 28     |
| Homes for the Poor - Improved Dwelling Assoc. #290, 1883-1887, n.d. <sup>†</sup> | 9   | 29     |
| Homes for the Poor - Improved Dwelling Assoc. #290 [oversize]                    | O4  | 3      |
| Charles J. Wheeler #293, 1891  | 9   | 30     |
| William Gray, Admin. vs. William G. Brooks et al. #295, 1892-1893                | 9   | 31     |
| Estate of Mary A. Smith #296, 1892, n.d. <sup>†</sup>                            | 10  | 1      |
| Estate of Mary A. Smith #296 [oversize]  | O4  | 4      |

<sup>52</sup> See also notes and correspondence, Box 30, Folder 10a.

|   | <b>Box</b> | <b>Folder</b> |
|---|------------|---------------|
| N.E. Conservatory of Music vs. Geo. Clarendon Hodges et al. #297, 1892, n.d.†   | 10         | 2             |
| N.E. Conservatory of Music vs. Geo. Clarendon Hodges et al. #297 [oversize]   | O4         | 4             |
| Isaac Huffmaster Estate #298, 1892  | 10         | 3             |
| St. Mary's Institute #299, 1892, n.d.   | 10         | 4             |
| Samuel L. Longfellow Estate #301, 1892†   | 10         | 5             |
| Samuel L. Longfellow Estate #301 [oversize]   | O4         | 4             |
| Ella A. Myers #302, 1892-1894, n.d.†  | 10         | 6             |
| Essex Country Club #303, 1892-1894, n.d.  | 10         | 7             |
| Library Hall Association #304, 1893, n.d.   | 10         | 8             |
| Anti Electric Railway for North Shore #305, 1893, n.d.  | 10         | 9             |
| Conrad Darling vs. Illustrated Police News #306, 1893, n.d.   | 10         | 10            |
| Franceska Adam vs. Emily A. Merrill & Ludwig Stumpf vs. Same #308, 1893   | 10         | 11            |
| Mrs. Mary (Longfellow) Greenleaf [Mrs. James Greenleaf] #310, 1893  | 10         | 12            |
| Elizabeth Ida Samuel [New England Conservatory] #311, 1894 n.d.†  | 10         | 13            |
| Elizabeth Ida Samuel [New England Conservatory] #311 [oversize]   | O4         | 4             |
| Edwin E. Chesley vs. City of Boston #312, 1893-1894, n.d.†  | 10         | 14            |
| Edwin E. Chesley vs. City of Boston #312 [oversize]   | O4         | 4             |
| George M. Brooks, Judge etc. vs. James R. Carret & Mr. Story Sargent #314, 1892-1893, n.d.†   | 10         | 15            |
| George M. Brooks, Judge etc. vs. James R. Carret & Mr. Story Sargent #314 [oversize]  | O4         | 4             |
| George M. Brooks, Judge etc. vs. James R. Carret & Mr. Story Sargent #314 [oversize]  | O5         | 1             |
| Coghlan, Francis, Estate of, Petition, John Reade & RHD III vs. Chas. R. Morse, Exr. & et al. #315, 1893, n.d.†                     | 10         | 16            |
| Coghlan, Francis, Estate of, Petition, John Reade & RHD III vs. Chas. R. Morse, Exr. & et al. #315 [oversize]                       | O5         | 2             |
| Bayliss, Thomas & Co. vs. George C. Cribb #316, 1893, n.d.  | 10         | 17            |
| Merrill Piano Company #359, 1896-1897, n.d.   | 10         | 18            |
| Cambridge Board of Health vs. R.H. Dana et al. #361, 1896-1900, n.d.†   | 10         | 19            |
| Cambridge Board of Health vs. R.H. Dana et al. #361 [oversize]  | O11        | 1             |
| Michael F. Davlin Estate #362, 1896, n.d.   | 10         | 20            |
| M.M. Ballou Estate, A.F. Wadsworth et al. vs. N.E Conservatory of Music #364, 1896  | 10         | 21            |
| Richard H. Dana & Samuel Wells, Trustees vs. James P. Arrington & U.S.Trust Co., Trustee #365 and Countersuit #366, 1896-1897, n.d. | 11         | 1             |
| Clemence Lorenzo vs. Maria Wirth, Executrix #367, 1897-1898, n.d.   | 11         | 2             |
| Clemence Lorenzo vs. Maria Wirth, Executrix #367 [oversize]   | O5         | 2             |
| John Lovett #369 & #374, 1897-1898, n.d.†   | 11         | 3             |
| John Lovett #369 & #374 [oversize]  | O5         | 2             |

\* = Includes photograph(s)      † = See oversize materials

|   | <b>Box</b> | <b>Folder</b> |
|---|------------|---------------|
| John Lovett #369 & #374 [oversize]  | O11        | 2             |
| Cambridge Rapid Transit Commission #371, 1897, n.d.   | 11         | 4             |
| Samuel Wells and R.H. Dana, Trustees vs. James P. Arrington #372, 1896-1897, n.d. <sup>†</sup>            | 11         | 5             |
| Samuel Wells and R.H. Dana, Trustees vs. James P. Arrington #372 [oversize]                               | O5         | 2             |
| Massachusetts Infant Asylum #373, 1897 <sup>†</sup>   | 11         | 6             |
| Massachusetts Infant Asylum #373, 1897 [oversize]   | O5         | 2             |
| Athletic Assoc. of Harvard Graduates #377, 1898 <sup>†</sup>  | 11         | 7             |
| Athletic Assoc. of Harvard Graduates #377, 1898 [oversize]  | O5         | 3             |
| Firemen's [Fire] Insurance Co., Dissolution of #378, 1898 <sup>†</sup>                                    | 11         | 8             |
| Firemen's [Fire] Insurance Co., Dissolution of #378, 1898 [oversize]                                      | O5         | 3             |
| Sanford & Cape Porpoise Railroad Co. #380, 1898, n.d.   | 11         | 9             |
| Duncan Robertson #384, 1889-1898, n.d.  | 11         | 10            |
| Miss Jennie Congdon vs. Joseph T. Walsh, Jr. #385, 1898, n.d.   | 11         | 11            |
| Francis N. Coghlan et al. vs. Richard H. Dana et al. #386, 1888-1889, n.d.                                | 11         | 12            |
| Francis N. Coghlan et al. vs. Richard H. Dana et al. #386 [oversize]                                      | O5         | 3             |
| Edward A. Barnard & Wife #387, 1898-1899, n.d. <sup>†</sup>   | 11         | 13            |
| Edward A. Barnard & Wife #387 [oversize]  | O5         | 3             |
| Henry F. Spach #388, 1899, n.d. <sup>†</sup>  | 11         | 14            |
| Henry F. Spach #388 [oversize]  | O5         | 3             |
| Mrs. Ada L. Lincoln, Estate, Charles A. Bodge #389, 1899-1900, n.d. <sup>†</sup>                          | 11         | 15            |
| Mrs. Ada L. Lincoln, Estate, Charles A. Bodge #389 [oversize]   | O5         | 4             |
| Estate W.H.S. Jordan vs. George S. Morse #390, 1899, n.d.   | 11         | 16            |
| Boston Civil Service Reform Assoc. #392, 1899-1900 <sup>53</sup>  | 11         | 17            |
| S.A. Dana Trustees, Otis Shepard, Carcano et al. vs. City of Cambridge #393, 1899-1900, n.d. <sup>†</sup> | 11         | 18            |
| Class of '74 Golf #396, 1899-1900, n.d.   | 11         | 19            |
| R.H. Dana vs. Plunger Elevator Co. #399 ½, 1900   | 11         | 20            |
| O'Hara-Nixon #400, 1900, n.d.   | 11         | 21            |
| Miss M. C. Wooster #401, 1899-1901, n.d.  | 11         | 22            |
| Cambridge Humane Society #402, 1896-1899  | 11         | 23            |
| Norfolk Southern Street Railway #403, 1900-1901, n.d.   | 11         | 24            |
| Lewis Pierce & Miss Crie, Accounts for Aunt Anne [Mrs. Anne (Longfellow) Pierce] #404, 1897-1901          | 12         | 1             |
| Mrs. Ella M. Pinkham #408, 1901, n.d.   | 12         | 2             |
| Mrs. George H. Lincoln #411 & #414, 1901-1902, n.d.   | 12         | 3             |
| Miss Caroline T. Leeds #412, 1902, n.d.   | 12         | 4             |
| Michael Holland vs. John Fallon & Mary L. Greenleaf, Trustee #418, 1902, n.d.                             | 12         | 5             |

<sup>53</sup> See also Series G. Reform Activities, 1. Civil Service Reform, 1886-1934 for more information.



|  | Box | Folder |
|--|-----|--------|
| Louis D. Menzies #419, 1900-1902, n.d.                                       | 12  | 6      |
| Miss A. M. Longfellow, Nahant Beach #421, 1902-1903                          | 12  | 7      |
| Nathan Appleton – Bolles Bros. Fund #422, 1902, n.d.                         | 12  | 8      |
| New Building for N.E. Conservatory #423, 1902, n.d. †                        | 12  | 9      |
| New Building for N.E. Conservatory #423 [oversize]                           | O5  | 4      |
| Susan G. B. Garland Will #425, 1902, n.d.                                    | 12  | 10     |
| John T. Morse #427, 1912   | 12  | 11     |
| Mrs. Ellen C.S. Morse, Marlborough #431, 1903-1904, n.d. †                   | 12  | 12     |
| Mrs. Ellen C.S. Morse, Marlborough #431 [oversize]                           | O11 | 2      |
| Mrs. Frederic Cunningham (Sarah M.) Will #432, n.d.                          | 12  | 13     |
| Morris Adkins Mortgage #440, 1892-1903, n.d. †                               | 12  | 14     |
| Morris Adkins Mortgage #440 [oversize]                                       | O6  | 1      |
| Ira O. Perring Mortgage #442, 1887-1901                                      | 12  | 15     |
| Dana vs. Pettes [361 Beacon St.] #461, 1880-1882, n.d. †                     | 12  | 16     |
| Dana vs. Pettes [361 Beacon St.] #461 [oversize]                             | O6  | 1      |
| Dana vs. Pettes [361 Beacon St.] #461 [oversize]                             | MC  | 1      |
| L. Francois, Maitre & Cie. vs. Whitmore & Boris #567, 1880-1883 †            | 12  | 17     |
| L. Francois, Maitre & Cie. vs. Whitmore & Boris #567 [oversize]              | O6  | 1      |
| Dana & Harding vs. John McDonald, 1878-1895, n.d.                            | 12  | 18     |
| Lechat-Drouet vs. Caroline A. Clapp, 1882-1886, n.d. †                       | 12  | 19     |
| Lechat-Drouet vs. Caroline A. Clapp [oversize]                               | O6  | 1      |
| Boston Young Men's Christian Assoc., 1883-1885, n.d. †                       | 12  | 20     |
| Boston Young Men's Christian Assoc. [oversize]                               | O6  | 1      |
| J. Chaigneau & Cie., 1883-1888, n.d.   | 12  | 21     |
| Leon Bouland vs. John Reisdorf, 1884-1886, n.d. †                            | 12  | 22     |
| Leon Bouland vs. John Reisdorf [oversize]                                    | O6  | 1      |
| Charles Nicholson vs. Old Colony Railroad, 1883-1886, n.d. †                 | 12  | 23     |
| Charles Nicholson vs. Old Colony Railroad [oversize]                         | O6  | 2      |
| M. Bouland, M. Meschine 1884-1885  | 13  | 1      |
| Mrs. James C. Fields & Mary Ann Mulvey [Annie Fields, guardian], 1884-1896 † | 13  | 2      |
| Mrs. James C. Fields & Mary Ann Mulvey [Annie Fields, guardian] [oversize]   | O6  | 2      |
| George M. Humphreys vs. Fannie Humphreys, 1885-1887, n.d. †                  | 13  | 3      |
| George M. Humphreys vs. Fannie Humphreys [oversize]                          | O6  | 2      |
| Mrs. Elizabeth S. Jennison, 1885-1887, n.d.                                  | 13  | 4      |
| Archibald McLean vs. McDougall, Logie & Co., 1885, n.d.                      | 13  | 5      |
| John McLauchlan, 1885  | 13  | 6      |
| Leon Bouland, 1886-1887, n.d. †  | 13  | 7      |
| Leon Bouland [oversize]  | O6  | 3      |
| Sale of House, R. Richardson to Adaline Lincoln, 1886-1887                   | 13  | 8      |
| Indenture, Edward J. Mason, 1886-1887 †                                      | 13  | 9      |
| Indenture, Edward J. Mason [oversize]  | O6  | 3      |

## 2. Associated Materials, 1904-1909

\* = Includes photograph(s)      † = See oversize materials

|   | <b>Box</b> | <b>Folder</b> |
|---|------------|---------------|
| Correspondence to Mr. J.C.J. Flamand, 1904-1909 | 13         | 10            |
| Change of Address Announcement, 1906            | 13         | 11            |
| Notes, n.d.                                     | 13         | 12            |

**Series D. RHD III Legal and Financial Records, 1884-1947**

|  | <b>Box</b> | <b>Folder</b> |
|--|------------|---------------|
| Partial Inventory, Mt. Vernon Place, 1884  | 13         | 13            |
| Schedules of Assets and Liabilities, 1912-1918                                     | 13         | 14            |
| Stock Warrants, Lawrence Gas Company, 1920   | 13         | 15            |
| Ledger, RHD III from Estate of Edith L. Dana, 1921-1927                            | 13         | 16            |
| Will of RHD III, Article 2, 1929   | 13         | 17            |
| Obituary, News Article & Legal Notice, 1931-1932                                   | 13         | 18            |
| RHD III Estate – Accounts and Correspondence, Dec. 1931-<br>Feb. 1932 <sup>†</sup> | 13         | 19            |
| RHD III Estate – Accounts and Correspondence, Mar. 1932-<br>Feb. 1933              | 13         | 20            |
| RHD III Estate – Accounts and Correspondence [oversize]                            | O6         | 3             |
| RHD III Estate, Cambridge Trust Co., 1947  | 13         | 21            |
| Edith L. Dana (1853-1915), Tax Accounts, n.d.                                      | 13         | 22            |

**Series E. RHD III Property, 1884-1947****1. Cambridge, 1887-1920**

|   | <b>Box</b> | <b>Folder</b> |
|---|------------|---------------|
| Cambridge House #144, 1887, n.d.                    | 13         | 23            |
| Cambridge House Plumbing Examination #172, 1888     | 13         | 24            |
| Edith L. Dana vs. City of Cambridge #391, 1898-1899 | 13         | 25            |
| Cambridge House, Brattle Street #41, 1904-1920      | 13         | 26            |

**2. Manchester, 1893-1923**

|  | <b>Box</b> | <b>Folder</b> |
|--|------------|---------------|
| Lease of Lot C, Manchester #309, 1893-1894 <sup>†</sup>                          | 14         | 1             |
| Lease of Lot C, Manchester #309 [oversize]                                       | O11        | 2             |
| Lot C, Manchester #363, 1900-1901, n.d.  | 14         | 2             |
| House Plans - Manchester, ca. 1881, 1901-1914 <sup>†</sup>                       | 14         | 3             |
| House Plans – Manchester [oversize]  | MC         | 1             |
| House Plans – Manchester [oversize]  | MC         | 2             |
| Mosquito Control – Manchester #19a, 1904-1909, n.d.                              | 14         | 4             |
| Lot C, Manchester, 1889-1905   | 14         | 5             |
| Lot C, Manchester, Notes and Correspondence #19, 1905-1916,<br>n.d. <sup>†</sup> | 14         | 6             |
| Lot C, Manchester, Notes and Correspondence #19 [oversize]                       | O6         | 3             |
| Manchester- Correspondence & Agreements for Easements #346,<br>1909 & n.d.*      | 14         | 7             |

\* = Includes photograph(s)      † = See oversize materials

|   | <b>Box</b> | <b>Folder</b> |
|---|------------|---------------|
| Sale of Manchester Property, 1920-1923  | 14         | 8             |
| Lot C, Manchester #159, n.d. [envelope] | 14         | 9             |

## Series F. Dana Family Records, 1797-1947

### 1. Correspondence and Accounts, 1881-1912

|  | <b>Box</b> | <b>Folder</b> |
|--|------------|---------------|
| RHD III Outgoing Correspondence, 1881-1890                                 | 14         | 10            |
| Family Accounts, Dana Heirs, 1882-1885                                     | 14         | 11            |
| Estates – Division of Pictures, 1899 & 1908                                | 14         | 12            |
| RHD III Correspondence – Division of Estates # 311 & 311a, 1905-1911       | 14         | 13            |
| RHD III Correspondence from Henrietta (Dana) Skinner (1857-1928) #79, 1906 | 14         | 14            |
| RHD III Correspondence – Craigie House Inventory, 1911-1912                | 14         | 15            |

### 2. Trusts, 1872-1924

|   | <b>Box</b> | <b>Folder</b> |
|---|------------|---------------|
| SAD & EED Trusts – F. E. Parker Bequest #141, 1872-1887, n.d. †         | 14         | 16            |
| SAD & EED Trusts – F. E. Parker Bequest #141 [oversize]                 | O6         | 4             |
| SAD & EED Wills - RHD III Correspondence to EED (1846-1939), 1879       | 14         | 17            |
| SAD & EED Trusts – Trustees & Correspondence, 1886-1898                 | 14         | 18            |
| SAD Trust – Real Estate Mortgage # 441, 1890-1903, n.d.                 | 14         | 19            |
| SAD Trust – John Gustafson Mortgage # 443, 1900-1901, n.d.              | 14         | 20            |
| SAD Trust – Simon C. Snow, Sale of Land in Cambridge, # 445, 1902, n.d. | 14         | 21            |
| SAD & EED Trusts – Trustees & Estate Division & Accounts, 1903-1906     | 14         | 22            |
| SAD Trust – Correspondence & Accounts #85, 1905-1912                    | 14         | 23            |
| SAD & EED Trusts – Correspondence & Accounts #309, 1908-1912            | 15         | 1             |
| SAD Land Trust – Correspondence #85a, 1912                              | 15         | 2             |
| SAD Land Trust – First Account & Correspondence, 1918 & 1924            | 15         | 3             |

### 3. Individuals, 1834-1920

|   | <b>Box</b> | <b>Folder</b> |
|---|------------|---------------|
| Estate of Washington Allston (1779-1843) #603, 1834-1846, n.d. †            | 15         | 4             |
| Estate of Washington Allston (1779-1843) #603 [oversize]                    | O6         | 4             |
| Estate of Washington Allston (1779-1843) #603 [oversize]                    | O6         | 5             |
| Martha Remington (Dana) Allston (1784-1862) Land Transactions, 1841 & 1847† | 15         | 5             |
| Martha Remington (Dana) Allston (1784-1862) Land Transactions [oversize]    | O7         | 1             |
| Martha Remington (Dana) Allston (1784-1862) Land Transactions [oversize]    | O11        | 2             |

|  | Box | Folder |
|--|-----|--------|
| Martha Remington (Dana) Allston (1784-1862) Trust Settlement, 1875-1876  | 15  | 6      |
| Martha Remington (Dana) Allston (1784-1862) Heirs in Account with RHD III, 1889                                    | 15  | 7      |
| Washington Allston Chair #232, 1908 & 1917   | 15  | 8      |
| Caleb Dana, Esq. (1697-1769) Extracts of his Will by Richard Dana (1700-1772), n.d.                                | 15  | 9      |
| Edith L. Dana – Accounts – Will of Thomas Gold Appleton (1812-1884), 1879-1886 <sup>†</sup>                        | 15  | 10     |
| Edith L. Dana – Accounts – Will of Thomas Gold Appleton [oversize]   | O7  | 1      |
| Edith L. Dana – Papers in Principal Account #272 & 272a, 1887-1912, n.d. <sup>54</sup>                             | 15  | 11     |
| George M. Potter, Exor. vs. Edith L. Dana et al., 1899-1900, n.d.  | 15  | 12     |
| Edith L. Dana – Lowell Gas Co. Stock Certificates & Corres. #300, 1920   | 15  | 13     |
| Edmund T. Dana (1779-1859) – Estate, 1867-1878 <sup>†</sup>  | 15  | 14     |
| Edmund T. Dana (1779-1859) – Estate [oversize]   | O7  | 1      |
| Francis Dana (1743-1811) Heirs – Indenture, 1836 <sup>†</sup>  | 15  | 15     |
| Francis Dana (1743-1811) Heirs – Indenture, 1836 [oversize]  | O7  | 1      |
| Mary Elizabeth Dana (1805-1886), Preparation to Assume Guardianship, 1886  | 15  | 16     |
| RHD, Jr. (1815-1882) Income – Taxation and Valuations, 1863-1871 <sup>†</sup>                                      | 15  | 17     |
| RHD, Jr. (1815-1882) Income – Taxation and Valuations [oversize]   | O7  | 1      |
| RHD, Jr. (1815-1882) Income – Taxation and Valuations [oversize]   | O7  | 2      |
| RHD, Jr. (1815-1882) Agreement – <i>Eighth Edition Wheaton's Elements of International Law</i> , 1864 <sup>†</sup> | 15  | 18     |
| RHD, Jr. (1815-1882) Agreement – <i>Eighth Edition Wheaton's Elements of International Law</i> , 1864 [oversize]   | O7  | 2      |
| RHD, Jr. (1815-1882) Correspondence Library of Congress #170, 1888-1892  | 15  | 19     |
| RHD, Jr. (1815-1882) International Law Books #313, 1889  | 15  | 20     |
| RHD, Jr. (1815-1882) Lawrence vs. Dana #72, 1895, n.d. <sup>†</sup>  | 15  | 21     |
| RHD, Jr. (1815-1882) Lawrence vs. Dana #72 [oversize]  | O7  | 2      |
| RHD IV (1879-1933) Correspondence & Accounts #33 & #413, 1901-1912, n.d.   | 15  | 22     |
| Ruth Charlotte Dana (1814-1901) Will and Jewelry Inventory, 1903, n.d.   | 15  | 23     |
| Sarah (Watson) Dana (1814-1907) #303, 1907-1910  | 15  | 24     |
| Ruth Charlotte (Dana) (1844-1903) & Francis O. Lyman (1846-1915), RHD III Correspondence, 1886                     | 15  | 25     |

<sup>54</sup> “Appraisal of Furniture at Manchester, Mass.” moved from Curatorial Research Files “Furnishings Plan/ Fine Arts/ Miscellaneous Furnishings.”

|  | <b>Box</b> | <b>Folder</b> |
|--|------------|---------------|
| Francis O. Lyman (1846-1915), Telegram, 1879   | 15         | 26            |
| Francis O. Lyman (1846-1915) #370, Correspondence, 1897-1903, n.d.                           | 15         | 27            |
| RHD III Correspondence - Francis O. Lyman's (1846-1915) Guardianship Bond, 1903              | 15         | 28            |
| Ruth Charlotte (Dana) Lyman (1844-1903) Estate #302, 1904-1907                               | 15         | 29            |
| RHD III Correspondence re: SWD Swayne (1842-1902), 1882-1898                                 | 15         | 30            |
| Col. R.H. Pratt – SWD Swayne (1842-1902) #142, 1886  | 15         | 31            |
| SWD Swayne (1842-1902), Walter S. Swayne (1857-1923) #379b, 1889-1900                        | 15         | 32            |
| Lumber Contracts, SWD Swayne (1842-1902) #283, 1891-1892, n.d.                               | 15         | 33            |
| RHD III Correspondence with SWD Swayne (1842-1902) & Walter S. Swayne (1857-1923), 1892-1894 | 15         | 34            |
| SWD Swayne (1842-1902) #192, 1900 & n.d.   | 15         | 35            |
| SWD Swayne (1842-1902) Correspondence #379, 1898-1900, n.d.*                                 | 16         | 1             |
| SWD Swayne (1842-1902) #379a, 1902   | 16         | 2             |
| RHD III Correspondence re: SWD Swayne (1842-1902) & Walter S. Swayne (1857-1923), 1902-1903  | 16         | 3             |
| Rosamond (Dana) Wild (1848-1937) Letter to Boston Storage Warehouse #124, 1886               | 16         | 4             |
| Rosamond (Dana) Wild (1848-1937) Letters re: Will & Guardianship #125, 1886–1891, n.d.       | 16         | 5             |
| Rosamond (Dana) Wild (1848-1937) RHD III Correspondence, 1886                                | 16         | 6             |
| Rosamond (Dana) Wild (1848-1937) Will & Estate, 1886, n.d. †                                 | 16         | 7             |
| Rosamond (Dana) Wild (1848-1937) Will & Estate [oversize]                                    | 16         | 8             |
| Rosamond (Dana) Wild (1848-1937) Letter Fragment, n.d.                                       | 16         | 9             |

#### 4. Properties, 1797-1928

##### a) Boston

|  | <b>Box</b> | <b>Folder</b> |
|--|------------|---------------|
| Estate in Pinckney Street, 1806-1830, n.d. | 16         | 9             |

##### b) Cambridge

|  | <b>Box</b> | <b>Folder</b> |
|--|------------|---------------|
| Indentures, 1797-1844, n.d.†             | 16         | 10            |
| Indentures [oversize]                    | 07         | 3             |
| Indentures [oversize]                    | 07         | 4             |
| Indentures [oversize]                    | 011        | 3             |
| Dana Estates, 1819-1844, n.d.            | 16         | 11            |
| Dana Family Properties, 1839-1887, n.d.† | 16         | 12            |
| Dana Family Properties [oversize]        | 07         | 5             |

\* = Includes photograph(s)      † = See oversize materials

|   | <b>Box</b> | <b>Folder</b> |
|---|------------|---------------|
| Legal Notice, E.T. Dana (1779-1859) or (1818-1869) to I. Green, 1848 <sup>†</sup>                     | 16         | 13            |
| Legal Notice, E.T. Dana to I. Green, 1848 [oversize]  | O7         | 5             |
| Indentures, E.T. Hastings & S.A. Dana, 1848 <sup>†</sup>  | 16         | 14            |
| Indentures, E.T. Hastings & S.A. Dana, 1848 [oversize]  | O7         | 5             |
| RHD, Sr. (1787-1879) Deeds, 1850-1866 <sup>†</sup>  | 16         | 15            |
| RHD, Sr. (1787-1879) Deeds [oversize]   | O7         | 5             |
| RHD, Sr. (1787-1879) Deeds [oversize]   | O11        | 3             |
| Mortgage Deed, RHD, Jr. (1815-1882) to RHD, Sr. (1787-1879), 1851                                     | 16         | 16            |
| "Estate in Common of RHD, Jr. (1815-1882), & Miss R. C. Dana" (1814-1901), 1852-1889 <sup>†</sup>     | 16         | 17            |
| "Estate in Common of RHD, Jr. (1815-1882), & Miss R. C. Dana" [oversize]                              | O7         | 5             |
| R.C. Dana (1814-1901) vs. J.H. Thayer et al., vs. Cambridge, Lot on Main St., 1871, n.d. <sup>†</sup> | 16         | 18            |
| R.C. Dana (1814-1901) vs. J.H. Thayer et al., vs. Cambridge, Lot on Main St. [oversize]               | O7         | 5             |
| Dana & Hogan #152, 1887, n.d.   | 16         | 19            |
| RHD III Correspondence re: Deeds & Lots, 1888   | 16         | 20            |
| Front St. Lot, Cambridgeport, 1887-1891   | 16         | 21            |
| RHD III Correspondence to Family re: Power of Attorney, 1889  | 16         | 22            |
| Correspondence from Samuel Wells re: Land in Cambridgeport, 1891                                      | 16         | 23            |
| Dana Estate, Western Avenue near Soden Farm, 1893   | 16         | 24            |
| 18 Willard St. #30, 1904-1912, n.d.   | 16         | 25            |
| Cambridge Lands #155, n.d. [empty envelope]   | 16         | 26            |

## c) Manchester

|   | <b>Box</b> | <b>Folder</b> |
|---|------------|---------------|
| John Allen - Will, 1822 (copied 1884) and Deed to Andrew Brown, 1823 (copied 1881) <sup>†</sup> | 16         | 27            |
| John Allen - Will, 1822 (copied 1884) and Deed to Andrew Brown, 1823 (copied 1881) [oversize]   | O8         | 1             |
| Map of Essex County by Eliza Maria Judkins, 1824  | 16         | 28            |
| Division of Estate of Daniel Allen, 1831 (copied 1881) <sup>†</sup>                             | 16         | 29            |
| Division of Estate of Daniel Allen, 1831 (copied 1881) [oversize]                               | O8         | 1             |
| Deed - David Driver et al. and Rachel Brown, 1844 (copied 1881) <sup>†</sup>                    | 16         | 30            |
| Deed - David Driver et al. and Rachel Brown, 1844 (copied 1881) [oversize]                      | O8         | 1             |
| Graves Beach, 1845 –1889, n.d. <sup>†</sup>   | 16         | 31            |
| Graves Beach [oversize]   | O8         | 1             |
| Graves Beach [oversize]   | O8         | 2             |
| Graves Beach [oversize]   | O11        | 3             |
| Graves Beach, J.R. Allen Lot 1896, n.d.   | 16         | 32            |

\* = Includes photograph(s)      † = See oversize materials

|  | <b>Box</b> | <b>Folder</b> |
|--|------------|---------------|
| Deed, Ivory Brown et ux. to John W. Brown, 1846 <sup>†</sup>   | 16         | 33            |
| Deed, Ivory Brown et ux. to John W. Brown, 1846 [oversize]   | O8         | 2             |
| Sketches of Boundaries, Memo of Deeds, 1847, n.d.  | 16         | 34            |
| John Lee admin. Estate of John W. Brown, 1858 (copied 1870), 1859 (copied 1880), & 1858 (copied 1880) <sup>†</sup> | 16         | 35            |
| John Lee admin. Estate of John W. Brown [oversize]   | O8         | 2             |
| Lease Agreement, RHD, Sr. (1787-1879) & S. J. Robinson, 1878 <sup>†</sup>  | 16         | 36            |
| Lease Agreement, RHD, Sr. (1787-1879) & S. J. Robinson, 1878 [oversize] <sup>55</sup>                              | O8         | 2             |
| Maps of RHD Sr. Estate in Manchester, 1880-1901, n.d. <sup>56 †</sup>  | 16         | 36a           |
| Maps of RHD Sr. Estate in Manchester, 1880, 1884, 1901 <sup>57</sup>   | MC         | 2             |
| RHD III Correspondence – Easements, 1881   | 16         | 37            |
| RHD III Correspondence to Family, 1884-1885  | 16         | 38            |
| Beach Right of Way, 1885 (copied 1901)   | 16         | 39            |
| Bills and Receipts, 1888   | 16         | 40            |
| Lot A (Inventory) #187, 1888, n.d.   | 16         | 41            |
| Lot B #188, ca.1888  | 17         | 1             |
| Towne, Dana et al, Town of Manchester, Dedication of Road #191, 1888, n.d.   | 17         | 2             |
| Warranty Deed, Eldridge Allen to RHD III, 1890 [memorandum]  | 17         | 3             |
| Rodney C. Allen's Contract #277, 1891-1892, n.d. <sup>†</sup>  | 17         | 4             |
| Rodney C. Allen's Contract #277 [oversize]   | O8         | 3             |
| Town of Manchester, Water Supply for Dana Estate #292, 1891-1893, n.d.   | 17         | 5             |
| RHD III Correspondence and Map, Sale of Land, 1895 <sup>†</sup>  | 17         | 6             |
| RHD III Correspondence and Map, Sale of Land, 1895 [oversize]  | MC         | 1             |
| RHD III Correspondence, Sale of Land, 1898-1900  | 17         | 7             |
| RHD III Correspondence, Sale of Land, 1902   | 17         | 8             |
| Quitclaim Deed, Charlotte (Dana) Lyman (1844-1903) et al. to Charles Head, 1902                                    | 17         | 9             |
| Sale of Furniture, 1902  | 17         | 10            |
| Preliminary Survey of R.H. Dana Estate et al., [mosquito control], 1904  | 17         | 11            |
| "Report of R.H. Dana on Value of Lot of Land, at Manchester, Massachusetts," 1906                                  | 17         | 12            |
| "List of Pictures from Manchester," 1923   | 17         | 13            |
| News Articles, 1851-1928, n.d.   | 17         | 14            |
| Etchings, 1867, n.d.   | 17         | 15            |
| Stationery – Dana's Beach Manchester by the Sea, Mass., n.d.   | 17         | 16            |
| Manchester by the Sea, Dana's Beach, n.d. [postcard]   | 17         | 17            |

<sup>55</sup> Oversize material removed from box 16, folder 36

<sup>56</sup> See also the estate papers of RHD Sr. in the Dana Family Papers. Includes undated manuscript map.

<sup>57</sup> Oversize material removed from box 16, folder 36a

|  | Box | Folder |
|--|-----|--------|
| "Portion of the R.H. Dana Estate at Manchester, Mass.," n.d. †             | 17  | 18     |
| "Portion of the R.H. Dana Estate at Manchester, Mass.," n.d.<br>[oversize] | O8  | 3      |
| "Portion of the R.H. Dana Estate at Manchester, Mass.," n.d.<br>[oversize] | O11 | 4      |
| Railroad Crossing Petition #63, n.d.                                       | 17  | 19     |
| Photographs, 1902, n.d.*   | 17  | 20     |

### 5. Family Manuscripts, 1904-1912

|                                       | Box | Folder |
|---------------------------------------|-----|--------|
| RHD III Correspondence #79, 1904-1912 | 17  | 21     |
| RHD III Correspondence #44a, 1910     | 17  | 22     |

### 6. Publications, 1896-1929

|  | Box | Folder |
|--|-----|--------|
| RHD III Correspondence - Longfellow Copyrights #272h, 1921-1928  | 17  | 23     |
| RHD III Correspondence - <i>Speeches in Stirring Times</i> , Speeches of<br>RHD, Jr. (1815-1882) #79a, 1896-1909       | 17  | 24     |
| RHD III Correspondence - <i>Speeches in Stirring Times</i> , Speeches of<br>RHD, Jr. (1815-1882) #79a, 1910            | 17  | 25     |
| RHD III Correspondence - <i>Speeches in Stirring Times</i> , Speeches of<br>RHD, Jr. (1815-1882) #79a, 1911-1929, n.d. | 17  | 26     |

### 7. RHD Sr. Writings, 1837-1905<sup>58</sup>

|   | Box | Folder |
|---|-----|--------|
| Correspondence and Poetry, 1837-1905 <sup>†</sup> | 17  | 27     |
| Correspondence and Poetry [oversize]              | O8  | 3      |

### 8. Memorials & Burials, 1875-1947

|  | Box | Folder |
|--|-----|--------|
| Tablet to Dr. Francis Dana (1777-1853) Christ Church, Cambridge,<br>1875-1876, n.d. <sup>†</sup> | 17  | 28     |
| Tablet to Dr. Francis Dana (1777-1853) Christ Church, Cambridge<br>[oversize]                    | O8  | 3      |
| Longfellow National Memorial Assoc. #290, 1900-1910 and 1947 <sup>†</sup>                        | 17  | 29     |
| Longfellow National Memorial Assoc. #290 [oversize]  | O8  | 3      |
| <i>Henry Wadsworth Longfellow Memorial Statue, Exercises at the<br/>Unveiling</i> , 1909         | 17  | 30     |
| Anne (Dudley) Bradstreet Memorial Tablet, First Church, Boston<br>#20, 1904-1910, n.d.           | 17  | 31     |
| Mt. Auburn Cemetery #303 [Sarah Watson Dana Tombstone], 1909                                     | 18  | 1      |

<sup>58</sup> See also Dana Family Papers and HWLD Papers, Box 58, Folder 1.



|   | Box | Folder |
|---|-----|--------|
| Edith L. Dana (1853-1915) Memorial Window #272 <sup>F</sup> , 1916-1918, n.d. <sup>59</sup> | 18  | 2      |
| Note with Memorial Inscription – RHD, Sr. (1787-1879) and RHD, Jr. (1815-1882), n.d.        | 18  | 3      |

## Series G. Reform Activities, 1886-1934

### 1. Civil Service Reform, 1883-1934<sup>60</sup>

|  | Box | Folder |
|--|-----|--------|
| "Civil Service of the City of New York," <i>The City Record</i> (N.Y.C.), 26 December 1883 <sup>61</sup> † | 18  | 3a     |
| "Civil Service of the City of New York," <i>The City Record</i> (N.Y.C.), 26 December 1883 [oversize]      | O8  | 3a     |
| <i>Civil Service Record</i> , 1889-91 [not all issues] <sup>62</sup>                                       | A1  | 7      |
| General Correspondence #62: Outgoing, 1904-1909  | 18  | 4      |
| General Correspondence #62: Outgoing, 1910-1911  | 18  | 5      |
| General Correspondence #62: Outgoing, 1913-1915  | 18  | 6      |
| General Correspondence #62: Incoming, 1904-1909  | 18  | 7      |
| General Correspondence #62: Incoming, 1910-1911  | 18  | 8      |
| General Correspondence #62: Incoming, 1912-1915  | 18  | 9      |
| General Correspondence #62: Additional Material, 1886-1915, n.d. <sup>†</sup>                              | 18  | 10     |
| General Correspondence #62: Additional Material [oversize]   | O8  | 4      |
| Theodore Roosevelt #62a: "President Roosevelt's Civil Service Record," by RHD III, 1904, n.d. †            | 18  | 11     |
| Theodore Roosevelt #62a: "President Roosevelt's Civil Service Record," by RHD III [oversize]               | O8  | 4      |
| Theodore Roosevelt #62a: "Reasons Why an Independent Should Vote for Roosevelt" by RHD III, 1904           | 18  | 12     |
| Theodore Roosevelt #62 & #62a: Outgoing Correspondence, 1904-1905  | 18  | 13     |
| Theodore Roosevelt #62a: Incoming Correspondence, 1904-1905, n.d.  | 18  | 14     |
| Theodore Roosevelt #62a: News Articles, 1904-1905  | 18  | 15     |
| Theodore Roosevelt #409: Roosevelt and Arbitration Treaties, 1912  | 18  | 16     |
| Report of the Council #62aa: Correspondence and Draft, 1907  | 19  | 1      |
| Council Meeting #62ab: Correspondence, 1907  | 19  | 2      |
| Special Exceptions to Civil Service Examinations #62ac: Correspondence and News Article, 1907-1909         | 19  | 3      |

<sup>59</sup> The superscript letter "#272<sup>F</sup>" was part of RHD III's numbering system.

<sup>60</sup> See also Box 11, Folder 17 for legal records related to the Boston Civil Service Association.

<sup>61</sup> LONG 14428.

<sup>62</sup> LONG 17712.

|   | <b>Box</b> | <b>Folder</b> |
|---|------------|---------------|
| Field Work and Office Organization #62ad: Correspondence, 1907-1911   | 19         | 4             |
| Political Activity and Assessment #62ah: Correspondence, 1908-1910  | 19         | 5             |
| 1911 Annual Meeting #62ai: Correspondence, 1909-1911  | 19         | 6             |
| Finance Committee #62av: Correspondence, 1915-1916  | 19         | 7             |
| Speaking Engagements #62b: Outgoing Correspondence, 1904-1911   | 19         | 8             |
| Speaking Engagements #62b: Incoming Correspondence, 1904  | 19         | 9             |
| Speaking Engagements #62b: Incoming Correspondence, 1905  | 19         | 10            |
| Speaking Engagements #62b: Incoming Correspondence, 1906-1908   | 19         | 11            |
| Speaking Engagements #62b: Incoming Correspondence, 1909-1911, n.d.   | 19         | 12            |
| Speaking Engagements #62b: Additional Material, 1901-1918   | 19         | 13            |
| Substitute Postal Workers #62c: Correspondence, 1904-1905   | 19         | 14            |
| Fourth Class Postmasters #62d: Outgoing Correspondence, 1905-1914   | 19         | 15            |
| Fourth Class Postmasters #62d: Incoming Correspondence, 1905-1908   | 19         | 16            |
| Fourth Class Postmasters #62d: Incoming Correspondence, 1909-1914, n.d. †                                   | 20         | 1             |
| Fourth Class Postmasters #62d: Incoming Correspondence [oversize]   | O8         | 4             |
| Fourth Class Postmasters #62d: Additional Material, 1908-1914   | 20         | 2             |
| Fourth Class Postmasters #62d <sup>1</sup> : Correspondence & Additional Materials, 1913-1915 <sup>63</sup> | 20         | 3             |
| Fourth Class Postmasters #62d <sup>2</sup> : Correspondence, 1914-1915, n.d. <sup>64</sup>                  | 20         | 4             |
| Fourth Class Postmasters #62d <sup>2</sup> : Additional Materials, 1890-1916, n.d. †                        | 20         | 5             |
| Fourth Class Postmasters #62d <sup>2</sup> : Additional Materials [oversize]                                | O8         | 4             |
| Fourth Class Postmasters #62d <sup>2</sup> : Additional Materials [oversize]                                | O11        | 4             |
| Henry Cabot Lodge and Postal Appointment # 62e: Correspondence, 1905  | 20         | 6             |
| Patronage and Political Activity #62f: Outgoing Correspondence, 1904-1912, n.d.                             | 20         | 7             |
| Patronage and Political Activity #62f: Incoming Correspondence, 1904-1909                                   | 20         | 8             |
| Patronage and Political Activity #62f: Incoming Correspondence, 1910-1912                                   | 20         | 9             |

<sup>63</sup> The superscript number “#62d<sup>1</sup>” was part of RHD III’s numbering system and is not referring to a footnote.

<sup>64</sup> The superscript number “#62d<sup>2</sup>” was part of RHD III’s numbering system and is not referring to a footnote.

|   | <b>Box</b> | <b>Folder</b> |
|---|------------|---------------|
| Patronage and Political Activity #62f: Additional Material, 1907-1914, n.d. †                     | 20         | 10            |
| Patronage and Political Activity #62f: Additional Material [oversize]                             | O8         | 4             |
| Patronage and Political Activity #62f: Additional Material [oversize]                             | MC         | 1             |
| Reform of Consular Service, #62g: Correspondence, 1904-1911                                       | 20         | 11            |
| Reform of Consular Service, #62g: Additional Material, 1903-1905, n.d.                            | 20         | 12            |
| Superannuation #62h: Outgoing Correspondence, 1904-1907   | 20         | 13            |
| Superannuation #62h: Outgoing Correspondence, 1908-1911   | 20         | 14            |
| Superannuation #62h: Incoming Correspondence, 1904-1905   | 21         | 1             |
| Superannuation #62h: Incoming Correspondence, 1906  | 21         | 2             |
| Superannuation #62h: Incoming Correspondence, Jan–Sep 1907†                                       | 21         | 3             |
| Superannuation #62h: Incoming Correspondence, Oct-Dec 1907  | 21         | 4             |
| Superannuation #62h: Incoming Correspondence, 1908†   | 21         | 5             |
| Superannuation #62h: Incoming Correspondence, 1909†   | 21         | 6             |
| Superannuation #62h: Incoming Correspondence, 1910  | 21         | 7             |
| Superannuation #62h: Incoming Correspondence, 1911-1912   | 21         | 8             |
| Superannuation #62h: Incoming Correspondence, 1907-1909 [oversize] <sup>65</sup>                  | O8         | 5             |
| Superannuation #62h: Reports, 1890-1908 <sup>66</sup>   | 21         | 9             |
| Superannuation #62h: Reports, n.d. †  | 21         | 10            |
| Superannuation #62h: Reports, n.d. [oversize]   | O8         | 5             |
| Superannuation #62h: Additional Material, 1907-1909   | 21         | 11            |
| Federal Retirement Legislation: Incoming Correspondence, 1906                                     | 22         | 1             |
| Federal Retirement Legislation: Additional Material, 1904-1906, n.d.                              | 22         | 2             |
| Committee on Resolutions # 62i: Correspondence, 1904-1911   | 22         | 3             |
| Isthmian Canal Service # 62j: Correspondence, 1904-1905   | 22         | 4             |
| Inspectors of Steamers #62k: Correspondence, 1904   | 22         | 5             |
| Removal of Postal Clerk for Political Activity #62l: Correspondence and Circular, 1904†           | 22         | 6             |
| Removal of Postal Clerk for Political Activity #62l: Correspondence and Circular, 1904 [oversize] | O8         | 5             |
| Roosevelt's Appointment of General Black #62m: Correspondence, 1904                               | 22         | 7             |
| Employees in Indian Warehouses #62o: Correspondence, 1905   | 22         | 8             |
| Indian Rights Association #208: Correspondence and Additional Material, 1907-1914                 | 22         | 9             |
| 1905 Annual Meeting #62p: Correspondence and Additional Material, 1904-1905                       | 22         | 10            |
| Exemption of Meat Inspectors #62r: Correspondence, 1906   | 22         | 11            |

<sup>65</sup> Oversize materials removed from box 21, folders 3, 5, 6

<sup>66</sup> Includes LONG 26308, copy of 1906 report.

|   | <b>Box</b> | <b>Folder</b> |
|---|------------|---------------|
| Examinations for Higher Municipal Offices #62s: Outgoing Correspondence, 1906-1911 & 1914, n.d.     | 22         | 12            |
| Examinations for Higher Municipal Offices #62s: Incoming Correspondence, 1903-1910                  | 22         | 13            |
| Examinations for Higher Municipal Offices #62s: Incoming Correspondence, 1911 & 1913-1914, n.d. †   | 22         | 14            |
| Examinations for Higher Municipal Offices #62s: Incoming Correspondence [oversize]                  | 08         | 5             |
| Examinations for Higher Municipal Offices #62s: The Mullen Case, 1909                               | 22         | 15            |
| Examinations for Higher Municipal Offices #62s: Drafts and Reports, 1906-1916                       | 22         | 16            |
| Examinations for Higher Municipal Offices #62s: Job Announcements, 1897-1907 <sup>†</sup>           | 23         | 1             |
| Examinations for Higher Municipal Offices #62s: Additional Material, 1904-1914 <sup>†</sup>         | 23         | 2             |
| Examinations for Higher Municipal Offices #62s [oversize] <sup>67</sup>                             | 09         | 1             |
| Annual Council Meeting #62t: Correspondence, 1906   | 23         | 3             |
| The Burrage Ordinance #62u: Correspondence, 1906 -1907 <sup>†</sup>                                 | 23         | 4             |
| The Burrage Ordinance #62u: Correspondence [oversize]   | 09         | 1             |
| Removal Rule #62v: Correspondence, 1906-1914  | 23         | 5             |
| Finance Committee #62w: Correspondence, 1908-1911   | 23         | 6             |
| Presidential Interference in Election #62x: Correspondence, 1906                                    | 23         | 7             |
| Salaries of Civil Service Commissioners #62y: Correspondence, 1906                                  | 23         | 8             |
| Report of Council #62z: Correspondence and Additional Materials, 1906                               | 23         | 9             |
| Civil Service Correspondence: Outgoing Correspondence, 1888-1910 [photostats]                       | 23         | 10            |
| Civil Service Correspondence: Incoming Correspondence, 1889-1911, n.d.                              | 23         | 11            |
| Civil Service Lectures and Reports, 1889-1922 <sup>68†</sup>  | 23         | 12            |
| Civil Service Lectures and Reports [oversize]   | 09         | 1             |
| Civil Service News Writings, 1895-1934, n.d.  | 23         | 13            |
| Philippines #88 and #241: Correspondence, 1902-1908, n.d.   | 23         | 14            |
| Massachusetts Civil Service Reform Association #68: Outgoing Correspondence, 1904–1910              | 24         | 1             |
| Massachusetts Civil Service Reform Association #68: Incoming Correspondence, 1904-1906 <sup>†</sup> | 24         | 2             |

<sup>67</sup> Oversize material removed from Box 23, folders 1 and 2.

<sup>68</sup> Includes LONG 26118, *Taking Municipal Contracts Out of Politics*, 1909, LONG 26307, *Higher Municipal Appointive Offices...*, 1906, and address "Patronage vs. Patriotism," 1922, removed from title page of LONG 14670.

|   | <b>Box</b> | <b>Folder</b> |
|---|------------|---------------|
| Massachusetts Civil Service Reform Association #68: Incoming Correspondence [oversize]                    | 09         | 1             |
| Massachusetts Civil Service Reform Association #68: Incoming Correspondence, 1907-1911, n.d.              | 24         | 3             |
| Massachusetts Civil Service Reform Association #68: Additional Material, 1887-1910, n.d.                  | 24         | 4             |
| Massachusetts – Competitive Examinations #68b: Outgoing Correspondence, 1906-1911                         | 24         | 5             |
| Massachusetts – Competitive Examinations #68b: Incoming Correspondence, 1906-1911                         | 24         | 6             |
| Massachusetts – Examinations for Heads of Municipal Departments #68-b-1: Correspondence, 1907-1910, n.d.  | 24         | 7             |
| Massachusetts – County Level Reform #68c: 1906-1912   | 24         | 8             |
| Massachusetts – Salary for Civil Service Commissioners #68d: Correspondence, 1906-1909 <sup>†</sup>       | 24         | 9             |
| Massachusetts – Salary for Civil Service Commissioners #68d: Correspondence [oversize]                    | 09         | 1             |
| Massachusetts – Laborers in Boston Institutions #68e: Correspondence, 1906-1910                           | 24         | 10            |
| Women’s Auxiliary of Massachusetts Civil Service Reform Association #68f: Correspondence, 1906-1911, n.d. | 24         | 11            |
| Dinner and Meeting of Massachusetts Civil Service Reform Association #68g: Correspondence, 1906           | 24         | 12            |
| Massachusetts Reform Club #246, Correspondence and Additional Material, 1902-1910, n.d. <sup>+69</sup>    | 24         | 13            |
| Massachusetts Reform Club #246, Correspondence and Additional Material [oversize]                         | 09         | 1             |
| Massachusetts Reform Club #246, Incoming Correspondence, 1896 (Accession LONG-70)                         | 24         | 14            |
| Cambridge Taxpayers Association #68h: Outgoing Correspondence, 1910 <sup>70</sup>                         | 25         | 1             |
| Financial Positions in Municipal Service #68k: Correspondence, 1910, n.d.                                 | 25         | 2             |
| Cambridge Government #76: Correspondence and Additional Materials, 1895-1911 <sup>†</sup>                 | 25         | 3             |
| Cambridge Government #76: Correspondence and Additional Materials [oversize]                              | 09         | 2             |
| Cambridge Civil Service Reform #86: Correspondence and Additional Materials, 1904-1914, n.d.              | 25         | 4             |
| Cambridge Rapid Transit #86a: Correspondence and Additional Materials, 1904-1910, n.d.                    | 25         | 5             |

<sup>69</sup> Includes LONG 26515, 1902 Secretary’s Report and RHD III notes for a speech with no file code.

<sup>70</sup> See also HWLD Papers Box 83, Folder 1 for letter from Curtis Guild numbered 68j.

|   | Box | Folder |
|---|-----|--------|
| Cambridge Charter Revision #86b: 1904-1906 & 1911 | 25  | 6      |

## 2. Ballot Reform, 1888-1925

|  | Box | Folder |
|--|-----|--------|
| Australian Ballot System of Massachusetts #32: Outgoing Correspondence, 1891-1911, n.d.  | 25  | 7      |
| Australian Ballot System of Massachusetts #32: Incoming Correspondence, 1888-1906 & 1908-1911  | 25  | 8      |
| Australian Ballot System of Massachusetts #32: Additional Materials, 1904 -1925, n.d.  | 25  | 9      |
| Paper Presented to New York State Bar Association #32a: Correspondence and Additional Material, 1905-1907 <sup>†</sup>                           | 25  | 10     |
| Paper Presented to New York State Bar Association #32a: Correspondence and Additional Material [oversize]  | O9  | 2      |
| Massachusetts Ballot Law #63x: Correspondence, 1906  | 25  | 11     |
| "Corrupt Practices Act...and the Australian Ballot System of Massachusetts," by RHD III in <i>The American Lawyer</i> , April 1906 <sup>71</sup> | A1  | 8      |
| "The Australian Ballot System of Massachusetts," by RHD III, 1911 <sup>72</sup> [pamphlet]   | 25  | 11a    |

## 3. Tax Reform, 1892-1911

|  | Box | Folder |
|--|-----|--------|
| Massachusetts Direct Legislation Amendment #381: Correspondence, 1911, n.d.                                      | 25  | 12     |
| Double Taxation in Massachusetts #63: Outgoing Correspondence, 1906-1911   | 25  | 13     |
| Double Taxation in Massachusetts #63: Incoming Correspondence, 1904-1911, n.d.                                   | 25  | 14     |
| Double Taxation in Massachusetts #63: Notebook of Taxation Cases, 1892-1894                                      | 25  | 15     |
| Double Taxation in Massachusetts #63: <i>Double Taxation</i> by RHD III, 1892 [pamphlet, 2 copies] <sup>73</sup> | 25  | 16     |
| Double Taxation in Massachusetts #63: <i>Double Taxation in Massachusetts</i> by RHD III, 1895 [book]            | 25  | 17     |
| Double Taxation in Massachusetts #63: Draft of Speech by RHD III, n.d.   | 25  | 18     |
| Double Taxation in Massachusetts #63: Additional Material, 1894-1908   | 25  | 19     |

<sup>71</sup> LONG 17706.

<sup>72</sup> LONG 26310.

<sup>73</sup> Includes LONG 26113, owned later by Eizabeth Ellery Dana (1846-1939).

**Series H. Organizations, 1872-1931**

|                                 | <b>Box</b> | <b>Folder</b> |
|---------------------------------|------------|---------------|
| Memberships and Donations, 1904 | 26         | 1             |

**1. Alumni Affairs, 1873-1916**

|   | <b>Box</b> | <b>Folder</b> |
|---|------------|---------------|
| St. Paul's School – Alumni Association Minutes, 1882-1887                                       | 26         | 2             |
| St. Paul's School – Roll of Alumni, 1882-1904   | 26         | 3             |
| St. Paul's School – Alumni Association Minutes, 1888-1904                                       | 26         | 4             |
| St. Paul's School, <i>The Record</i> , 1904   | 26         | 5             |
| <i>St. Paul's School, Fiftieth Anniversary</i> , 1906 [pamphlet]                                | 26         | 6             |
| <i>St. Paul's School, Annual Report of the Rector</i> , 1907-1908 & 1910-1911                   | 26         | 7             |
| St. Paul's School – Addresses & Sermons, 1888-1910  | 26         | 8             |
| St. Paul's School – Horae Jubilee Number, 1910  | 26         | 9             |
| St. Paul's School, <i>Alumni Horae</i> , 1910 [pamphlet]  | 26         | 10            |
| Harvard – Class of 1874, Poem, 1880 <sup>74</sup>   | 26         | 11            |
| Harvard – Class of 1874, Secretary's Reports #1-4, 1874-1840 [pamphlets] <sup>75</sup>          | 26         | 12            |
| Harvard – Class of 1874, Secretary's Report #5, 1884-1889 [pamphlet] <sup>76</sup>              | 26         | 13            |
| Harvard – Class of 1874, Secretary's Report #6, 1889-1894 [pamphlet] <sup>77</sup>              | 26         | 14            |
| Harvard – Class of 1874, Secretary's Report #6, 1889-1894 [pamphlets] [2 copies] <sup>78</sup>  | 26         | 15            |
| Harvard Publications, 1885-1895 [pamphlets and brochures] <sup>79</sup>                         | 27         | 1             |
| Harvard Publications, 1903-1906 [pamphlets] <sup>80</sup>                                       | 27         | 2             |
| Harvard – Class of 1874, "Fortieth Anniversary Dinner Menu", 1914                               | 27         | 3             |
| Harvard – <i>Reports of the Visiting Committees of the Board of Overseers</i> , [brochure] 1890 | 27         | 4             |
| Harvard – Visiting Committee of Department of Philosophy #34 & #305, 1904-1911, n.d.            | 27         | 5             |
| Harvard Rowing – <i>Principles of Rowing at Harvard</i> , 1873 [pamphlet]                       | 27         | 6             |
| Harvard Rowing – Correspondence #360, 1896  | 27         | 7             |

<sup>74</sup> LONG 16552.

<sup>75</sup> Biography of RHD III is included in Report #4. Notes possibly related to budget inserted in LONG 16551. Includes LONG 16551, LONG 16553, LONG 16554, LONG 16555.

<sup>76</sup> LONG 16556.

<sup>77</sup> LONG 16557.

<sup>78</sup> Duplicates of LONG 16557.

<sup>79</sup> Publications have the following individual catalog numbers: LONG 16158, LONG 16549, LONG 16546, LONG 16160, LONG 16559, LONG 16560, LONG 16550, LONG 16156.

<sup>80</sup> Includes: LONG 16545, LONG 16159, LONG 16547.

|   | <b>Box</b> | <b>Folder</b> |
|---|------------|---------------|
| Harvard Rowing Crew #65 – Correspondence and Additional Material, 1908-1910   | 27         | 8             |
| Harvard Rowing – <i>The Essential in Rowing Revived</i> by RHD III [brochures] [2 copies and correspondence], 1909-1910 | 27         | 9             |
| Harvard Rowing – <i>Two Lessons From the University Boat Race of 1914</i> by RHD III, 1914 [brochure]                   | 27         | 10            |
| Harvard Rowing – “Rowing and Health,” Comments by RHD III, 1915   | 27         | 11            |
| Harvard Alumni Chorus #364 – Correspondence, 1909-1911  | 27         | 12            |
| Harvard Alumni Chorus – Photograph, 1916  | 27         | 13            |
| University Club #345 – Correspondence, 1911   | 27         | 14            |
| Harvard – Class of 1874, Fortieth Anniversary Photograph, 1914*   | 27         | 15            |
| Harvard Law School Association – Newsletters, 1887-1907 <sup>†</sup>  | 27         | 16            |
| Harvard Law School Association – Newsletters [oversize]   | 09         | 2             |
| “The Harvard Law School,” <i>The American University Magazine</i> , June 1895 <sup>81</sup>                             | 27         | 17            |
| Harvard Law School – Announcements, 1887-1888 & 1892-1893 <sup>82</sup>   | 27         | 18            |
| Harvard Law School Association – Reports, 1883-1906 [pamphlets]   | 27         | 19            |
| Harvard – Menu of the O.K., 22 April 1885 <sup>83</sup>   | 27         | 19a           |
| Harvard – Phi Beta Kappa Announcements, 1910 <sup>84</sup>  | 27         | 20            |

## 2. Cambridge Historical Society, 1905-1914

|   | <b>Box</b> | <b>Folder</b> |
|---|------------|---------------|
| Cambridge Historical Society #232: Correspondence and Additional Material, 1905-1914, n.d | 27         | 21            |

## 3. Citizens’ Committee on Charles River Bridges, 1906-1911

|  | <b>Box</b> | <b>Folder</b> |
|--|------------|---------------|
| Citizens’ Committee on Charles River Bridges #275 – Outgoing Correspondence, 1906-1911, n.d.         | 28         | 1             |
| Citizens’ Committee on Charles River Bridges #275 – Incoming Correspondence, 1906-1911, n.d.         | 28         | 2             |
| Citizens’ Committee on Charles River Bridges #275 – Writings and Additional Material, 1909-1910, n.d | 28         | 3             |

## 4. Committee on Charles River Dam, 1901-1908

|  | <b>Box</b> | <b>Folder</b> |
|--|------------|---------------|
| Committee on Charles River Dam #406: Correspondence, 1901-1928 | 28         | 4             |

<sup>81</sup> RHD III is featured on p. 106.

<sup>82</sup> LONG 16548.

<sup>83</sup> Moved from LONG 16556, Fifth Report of the Class Secretary of the Class of 1874.

<sup>84</sup> LONG 16157.



**5. Episcopal Church, 1872-1931**

|  | <b>Box</b> | <b>Folder</b> |
|--|------------|---------------|
| General Convention, 1904 [pamphlets] <sup>85</sup>   | 28         | 4a            |
| General Conventions #39: Correspondence, 1904-1922, n.d. <sup>†</sup>  | 28         | 5             |
| General Conventions #39: Correspondence [oversize]   | O9         | 2             |
| Order of Prayers #39: Correspondence, 1916-1917, n.d.  | 28         | 6             |
| Physical Fitness of Seminarians #39: Correspondence, 1919, n.d.  | 28         | 7             |
| Address by Archbishop of Canterbury: #39a, Correspondence, 1904, n.d.  | 28         | 8             |
| Bishop's Promise of Conformity #39a: Correspondence, 1916-1918   | 28         | 9             |
| Episcopal Theological School #100 & #111: Financial Correspondence, 1894 & 1911, n.d.  | 28         | 10            |
| Episcopal Theological School Heating Plant #100b: Correspondence, 1904-1908  | 28         | 11            |
| Episcopal Theological School Heating Plant #100b: Proposals, 1902-1904, n.d.   | 28         | 12            |
| Episcopal Theological School Heating Plant #100b: Architectural Drawings, 1904, n.d. <sup>†</sup>                                      | 28         | 13            |
| Episcopal Theological School Heating Plant #100b: Architectural Drawings [oversize]  | O11        | 4             |
| Episcopal Theological School Heating Plant #100b: Architectural Drawings [oversize, restricted for preservation reasons] <sup>86</sup> | O11        | 6             |
| Property at 178/180 Beacon Street #121: Correspondence, 1904-1908  | 28         | 14            |
| Episcopal Theological School Walnut Tree #100 & #126: Correspondence, 1905-1906  | 28         | 15            |
| Bequest of Cemetery Lot #137a: Correspondence, 1905-1911   | 28         | 16            |
| "Edison Electric...vs The Episcopal Theological School" #137b: Correspondence, 1906-1910, n.d.   | 28         | 17            |
| Property at 15 Kirkland Street # 137c: 1895-1911, n.d. <sup>†</sup>  | 28         | 18            |
| Property at 15 Kirkland Street # 137c [oversize]   | O9         | 2             |
| Property at 15 Kirkland Street # 137c [oversize]   | O11        | 4             |
| Estate of Bishop Eastburn #147: 1872-1906, n.d. <sup>†</sup>   | 29         | 1             |
| Estate of Bishop Eastburn #147 [oversize]  | O9         | 3             |
| Property at 2 & 6 Phillips Place #162: 1907-1908, n.d. <sup>†</sup>  | 29         | 2             |
| Property at 2 & 6 Phillips Place #162 [oversize]   | O9         | 3             |
| Professor Nash Assistance Fund #177: Correspondence, 1907-1908   | 29         | 3             |
| Rental Accommodations for Rev. Washburn #178: Correspondence, 1908   | 29         | 4             |
| Episcopal Theological School, Gray Memorial Room #220: Correspondence, 1889  | 29         | 5             |

<sup>85</sup> Includes pamphlets LONG 26294, 26440, 26443.

<sup>86</sup> Item is restricted for preservation reasons. Please do not use this item until it receives proper conservation treatment, because it is extremely fragile.

|   | <b>Box</b> | <b>Folder</b> |
|---|------------|---------------|
| Thank-Offering Fund #274: Correspondence, 1905-1907                                       | 29         | 6             |
| Reaction to Proposed Court of Appeals #291: Correspondence, 1907                          | 29         | 7             |
| Site of Future Cathedral #341: Correspondence, 1908-1911                                  | 29         | 8             |
| 150 <sup>th</sup> Anniversary Speech at Christ Church #402: Incoming Correspondence, 1911 | 29         | 9             |
| Episcopal Theological School, Architectural Drawings for Chimney, 1904 <sup>†</sup>       | 29         | 10            |
| Episcopal Theological School, Architectural Drawings for Chimney, 1904 [oversize]         | O11        | 4             |
| Episcopal Theological School Tribute to RHD III, 1929                                     | 29         | 11            |
| Episcopal Theological School Bulletins, 1925-1931 [pamphlets]                             | 29         | 12            |
| Episcopal Theological School Trustees Treasurer's Reports, 1896-1911                      | 29         | 13            |
| Episcopal Theological School Trustees Treasurer's Correspondence, 1900-1910               | 29         | 14            |
| Bishop Lawrence, 1903 & 1922  | 29         | 15            |

#### 6. Mayesville Institute, 1905-1923

|  | <b>Box</b> | <b>Folder</b> |
|--|------------|---------------|
| Mayesville Institute #6, Correspondence, 1905-1923                         | 29         | 16            |
| Mayesville Institute #6: Legal & Financial Records, 1905-1916 <sup>†</sup> | 29         | 17            |
| Mayesville Institute #6: Legal & Financial Records [oversize]              | O9         | 3             |
| Mayesville Institute #6 Additional Material, 1905-1916, n.d.               | 29         | 18            |
| Mayesville Institute #6a New Construction, 1905-1906, n.d. <sup>†</sup>    | 29         | 19            |
| Mayesville Institute #6a New Construction [oversize]                       | O11        | 5             |

#### 7. New England Conservatory, 1885-1909

|  | <b>Box</b> | <b>Folder</b> |
|--|------------|---------------|
| Correspondence, 1891-1896 & 1905-1909, n.d.  | 29         | 20            |
| Legal Records – Copy of 1885 Charter, n.d.   | 29         | 21            |
| Financial Records – Fundraising, 1890-1897, n.d. <sup>†</sup>                          | 29         | 22            |
| Financial Records – Fundraising [oversize]   | O9         | 3             |
| Financial Records – Account Statements, 1890-1898, n.d. <sup>†</sup>                   | 29         | 23            |
| Financial Records – Account Statements [oversize]                                      | O9         | 4             |
| Financial Records – Account Statements [oversize]                                      | O10        | 1             |
| Financial Records – Account Statements [oversize]                                      | O10        | 2             |
| Financial Records – “Comparative Statement of Registration” and Notes, 1896-1900, n.d. | 29         | 24            |
| Board of Trustees, 1891-1909, n.d.   | 30         | 1             |
| Director's Reports and Contract, 1890-1892   | 30         | 2             |
| Director Faelten Controversy, 1896-1897, n.d.  | 30         | 3             |
| Faculty, Buckingham - Whitney 1891-1897  | 30         | 4             |
| Request Regarding Potential Student, 1895  | 30         | 5             |

\* = Includes photograph(s)      † = See oversize materials

|  | Box | Folder |
|--|-----|--------|
| Courses and Regulations, 1892-1896     | 30  | 6      |
| Programs & Invitations, 1895-1898, n.d | 30  | 7      |
| Examinations, 1895-1897, n.d.          | 30  | 8      |
| Additional Material, n.d.              | 30  | 9      |

### 8. Republican Party, 1884-1908

|  | Box | Folder |
|--|-----|--------|
| Republican Party, 1884 – 1908 <sup>†</sup> | 30  | 10     |
| Republican Party, 1884 [oversize]          | O10 | 2      |

### 9. Cambridge Casino, 1895

|  | Box | Folder |
|--|-----|--------|
| Notes and Correspondence, 1895 <sup>87</sup>                                       | 30  | 10a    |
| "Cambridge Casino. Records of Minutes," 15 June 1882 – 29 April 1895 <sup>88</sup> | O14 |        |

### Series I. Collected Material, 1850-1931

|   | Box | Folder |
|---|-----|--------|
| Scrapbook, n.d [cross-reference folder] <sup>89</sup>                                     | 30  | 11     |
| Bound Scrapbook – News Articles about Dana Family   | O13 |        |
| <i>A Coach Drive at the Lakes</i> , 1891 [book] <sup>90</sup>                             | 30  | 11a    |
| Amateur Theatricals, 1866-1903, n.d. <sup>†</sup>   | 30  | 12     |
| Amateur Theatricals [oversize]  | O11 | 5      |
| Calling Cards and Stationery Monograms, n.d.  | 30  | 13     |
| Circulars, n.d.   | 30  | 14     |
| Dana Family, 1850-1888, n.d.*   | 30  | 15     |
| Dana, Richard Henry Jr. (1815-1882), 1872 [Geneva Arbitration]                            | 30  | 16     |
| Dana, Richard Henry III (1851-1931), Articles and Award, 1897-1926 <sup>†</sup>           | 30  | 17     |
| Dana, Richard Henry III (1851-1931), Articles and Award [oversize]                        | O10 | 3      |
| Dried Roses from ELD/ RHD III Wedding, 10 January 1878 <sup>91</sup>                      | 30  | 17a    |
| Key with Tag, n.d.  | 30  | 18     |
| Massachusetts Legislative Acts re: Boston Elevated Railway Co., 1905 & 1918 <sup>92</sup> | 30  | 18a    |
| Newspaper Articles, 1892-1927, n.d.   | 30  | 19     |

<sup>87</sup> See also legal file, Box 9, Folder 5. These items moved from LONG 14402, Cambridge Casino Records of Meetings of Shareholders.

<sup>88</sup> LONG 14402.

<sup>89</sup> See Box 13

<sup>90</sup> LONG 26427. RHD III apparently gave the book to ELD, but he placed travel notes in the volume.

<sup>91</sup> Flora removed to Oversize Box 3, Env. 2 of the Elizabeth Ellery Dana Papers (index box). Moved from RHD III's copy of the Bible, LONG 14785.

<sup>92</sup> LONG 26209, LONG 26309

|   | <b>Box</b> | <b>Folder</b> |
|---|------------|---------------|
| Painting Titles & Painting Supplies, n.d. [lists] | 30         | 20            |
| Pamphlets, 1891 & 1923                            | 30         | 21            |
| Ship Passenger Lists, 1904 & 1910 <sup>93</sup>   | 30         | 22            |
| Print – “Admiral Saunders”, n.d.                  | 30         | 23            |
| Program & Brochure, 1925 & 1931 <sup>†</sup>      | 30         | 24            |
| Program & Brochure [oversize]                     | O11        | 5             |
| Train Ticket, 1884                                | 30         | 25            |
| Travels in Europe 1875-1876, n.d.                 | 30         | 26            |
| Writings, 1925 & n.d. <sup>†</sup>                | 30         | 27            |
| Writings [oversize]                               | O10        | 3             |

### Series J. Edith (Longfellow) Dana (1853-1915)

|  | <b>Box</b> | <b>Folder</b> |
|--|------------|---------------|
| Papers of Edith (Longfellow) Dana (1853-1915) [cross-reference folder] <sup>94</sup> | 30         | 28            |

### Series K. Helen (Ford) Mumford Dana (1865-1934)

|  | <b>Box</b> | <b>Folder</b> |
|--|------------|---------------|
| Outgoing Correspondence, 1923-1933                       | 30         | 29            |
| Memorial Inscription, Helen Ford Dana, n.d. <sup>†</sup> | 30         | 30            |
| Memorial Inscription, Helen Ford Dana [oversize]         | O11        | 5             |
| Biographical Notes, ca.1934-1950 <sup>95</sup>           | 30         | 31            |
| Note Presenting Book, June 1931 <sup>96</sup>            | 30         | 32            |

<sup>93</sup> Mentions RHD IV, HWLD and MRD Wild and daughter, (sons of RHD III, and his sister and his niece.)

<sup>94</sup> See Henry Wadsworth Longfellow Family Papers (LONG 27930) for the papers of ELD (1853-1915).

<sup>95</sup> Removed from LONG 16493, Mumford Memoirs. EED and possibly Henry DeRham wrote these notes.

<sup>96</sup> Removed from LONG 16483, Penn Cresson, *Francis Dana: A Puritan Diplomat at the Court of Catherine the Great*, 1930.

## ***SUBCOLLECTION II. PHOTOGRAPHIC MATERIALS***

For individual descriptions of photographs owned by and related to RHD III, see the finding aid to photographs related to various members of the Dana Family, *Addendum: Photographs in the Elizabeth Ellery Dana (1846-1939) Personal Papers, 1829-1940, Richard Henry Dana III (1851-1931) Papers, 1797-1947, Dana Collected Correspondence, 1838-1938, and Dana Family Papers, 1661-1960*, and the accompanying records in the Interior Collections Management System (ICMS) database at the site's archives.

Note that these photographs are boxed along with photographs removed from the *Elizabeth Ellery Dana (1846-1939) Personal Papers, 1829-1940, Richard Henry Dana III (1851-1931) Papers, 1797-1947, Dana Collected Correspondence, 1838-1938, and Dana Family Papers, 1661-1960*.

### **Series A. Loose Photographs (1004.002/001)**

**Item No(s):** 001

**Title:** [RHD III. Portrait.]

**Description:** Richard Henry Dana III wears a dark jacket, vest and necktie fastened with a stickpin. He is turned slightly to the right. Blurred oval image. Bust portrait.

**Date and Notes:** C1916 because of apparent age of subject. Photograph was originally in the RHD III Papers, box 1, folder 16.

**Location:** Dana Photos Box 1 (8X10), Env. 1

**Item No(s):** 002

**Title:** [RHD III. Portrait.]

**Description:** Richard Henry Dana III wears a dark jacket, vest and necktie fastened with a stickpin. He is facing front. Blurred oval image. Bust portrait.

**Date and Notes:** C1916 because of apparent age of subject. Photograph was originally in the RHD III Papers, box 1, folder 16.

**Location:** Dana Photos Box 1 (8X10), Env. 2

**Item No(s):** 003

**Title:** [Exterior. Manchester home of RHD III.]

**Description:** View of facade of RHD III's home in Manchester, Massachusetts. Unidentified woman stands on the porch. She rests with her hand on one of the porch's posts and a tennis racquet is propped up alongside the same post. She possibly wears a white tennis costume. Chalk lines in lower left corner of image, possibly tennis court. Note that the left side of the house has a possible extension / addition. See 1004.2/1-#16 for image of house without the extension.

**Date and Notes:** C1885-C1920. RHD III's Manchester home was built in 1885 and RHD sold it in 1923. Photograph was originally in the RHD III Papers, box 17, folder 20.

**Location:** Dana Photos Box 1 (8X10), Env. 3

**Item No(s):** 004

**Title:** [Postcard. Dana's Island.]

**Description:** Summer or fall view of the coast of Dana's Island in Manchester, Massachusetts.

**Date and Notes:** This postcard probably made C1910-C1930 because of photomechanical process. Photograph was originally in the RHD III Papers, box 17, folder 20.

**Location:** Dana Photos Box 1 (8X10), Env. 4

**Item No(s):** 005

**Title:** [Painting. Dana's Beach.]

**Description:** Photograph of painting of Dana Beach by Ernest Wadsworth Longfellow (1845-1921). View of rocky, tree-lined coastline. Sailboats and islands are visible in the distance.

**Date and Notes:** This print was probably made 1910-C1950 because of the gelatin silver print process used and its association with SPNEA which was founded in 1910. Photograph was originally in the RHD III Papers, box 17, folder 20.

**Location:** Dana Photos Box 1 (8X10), Env. 5

**Item No(s):** 006

**Title:** [Interior. Manchester home of RHD III.]

**Description:** View of a section of the parlor facing another room which is barely visible. A white painted hexagonal table and an open door is visible in the background leading to a porch. This rest of the photograph is dark and difficult to distinguish.

**Date and Notes:** Sept. 1905 is inscribed on the verso of the photograph. Photograph was originally in the RHD III Papers, box 14, folder 7.

**Location:** Dana Photos Box 2 (4X5), Env. 1

**Item No(s):** 007

**Title:** [Unidentified horse and carriage.]

**Description:** Unidentified horse and carriage in front of unknown building.

**Date and Notes:** C1898-C1900 because of possible association with Sarah Dana Swayne (1842-1902) correspondence. Photograph was originally in the RHD III Papers, box 16, folder 1.

**Location:** Dana Photos Box 2 (4X5), Env. 2

**Item No(s):** 008

**Title:** [The Heads' House. Manchester.]

**Description:** Exterior view of the Head's house on the rocky, tree-lined coast in Manchester, Massachusetts. The house is obscured by the trees and a stone fence. A walled garden near the house is barely visible.

**Date and Notes:** Date inscribed on verso by EED as 1903. Photograph was originally in the RHD III Papers, box 17, folder 20.

**Location:** Dana Photos Box 2 (4X5), Env. 3

**Item No(s):** 009

**Title:** [Eagle's Head. Manchester.]

**Description:** Eagle Head, a rock formation on the Manchester coastline, possibly Singing Beach.

**Date and Notes:** Print possibly made between C1890-C1940 based on the gelatin silver print process used. Photograph was originally in the RHD III Papers, box 17, folder 20.

**Location:** Dana Photos Box 2 (4X5), Env. 4

**Item No(s):** 010

**Title:** [Exterior. Manchester home of RHD Sr.]

**Description:** Exterior of the front of the federal facade of the Manchester home of Richard Henry Dana (1787-1879). Widow's walk on the roof and an apparent addition to the house of the left side is visible. Hexagonal porch directly to the right of the house. A small amount of the surrounding property is visible. A packing carriage is parked directly in front of the house. A figure of a woman, possibly Elizabeth Ellery Dana (1846-1939) is standing in front of the hexagon-shaped porch.

**Date and Notes:** Date is inscribed on the verso. Photograph was originally in the RHD III Papers, box 17, folder 20.

**Location:** Dana Photos Box 2 (4X5), Env. 5

**Item No(s):** 011

**Title:** [Exterior. Manchester home of RHD Sr.]

**Description:** Exterior of front of the federal facade of the Manchester home of Richard Henry Dana (1787-1879). View was shot from the left of the house. Widow's walk on the roof and an apparent addition to the house of the left side is barely visible since trees block the view. An unknown man stands in front of a packing carriage which is parked directly in front of the house.

**Date and Notes:** Date is inscribed on verso. Photograph was originally in the RHD III Papers, box 17, folder 20.

**Location:** Dana Photos Box 2 (4X5), Env. 6

**Item No(s):** 012

**Title:** [Exterior. Right porch of Manchester home of RHD Sr.]

**Description:** Exterior of porch of the Manchester home of Richard Henry Dana (1787-1879). Porch is on the right side of the house and has a hexagon-shaped roof. EED stands near by, behind the porch banister, wearing a dark colored gown.

**Date and Notes:** Date is inscribed on verso. Photograph was originally in the RHD III Papers, box 17, folder 20.

**Location:** Dana Photos Box 2 (4X5), Env. 7

**Item No(s):** 013

**Title:** [Exterior. Manchester home of RHD Sr. EED and ELD on front porch.]

**Description:** Exterior of the front porch of the Manchester home of Richard Henry Dana (1787-1879). EED and ELD are standing on the porch. Both women wear dark gowns.

**Date and Notes:** Date is inscribed on verso. Photograph was originally in the RHD III Papers, box 17, folder 20.

**Location:** Dana Photos Box 2 (4X5), Env. 8

**Item No(s):** 014

**Title:** [Exterior. Manchester home of RHD Sr. Right view of EED and ELD on front porch.]

**Description:** Exterior of the front porch of the Manchester home of Richard Henry Dana (1787-1879). EED and ELD are standing on the porch. View was shot from the right. Both women wear dark gowns.

**Date and Notes:** Date is inscribed on verso. Photograph was originally in the RHD III Papers, box 17, folder 20.

**Location:** Dana Photos Box 2 (4X5), Env. 9

**Item No(s):** 015

**Title:** [Interior. Manchester home of RHD III.]

**Description:** View of parlor facing the dining room. A white painted hexagon-shaped table and an open door is visible in the background leading to a porch. A fireplace with mantle is visible across the room. Photographs rest on the mantle and tennis rackets rest above the mantle. The dining room is visible including the fireplace in the room.

**Date and Notes:** The Manchester home of RHD III was built in 1885 and sold in 1923. The processes used to make this photograph and the time frame of RHD III's residence dates this photo C1885-C1920. Photograph was originally in the RHD III Papers, box 17, folder 20.

**Location:** Dana Photos Box 3 (14X18), Fldr. 1

**Item No(s):** 016

**Title:** [Exterior. Manchester home of RHD III.]

**Description:** View of facade of RHD III's home in Manchester, Massachusetts. ELD and unidentified nurse sit on the porch. One of the women sits on a rocking chair, probably the nurse (the women are difficult to distinguish), and she has a baby on her lap (possibly Edmund Trowbridge Dana b. 1886). Both women wear dark colored dresses. One woman (possibly ELD) wears a wide-brimmed dark hat. The house is surrounded by dirt ground without any grass or landscaping. A laundry line hangs (possibly on a fir tree) to the left of the house.

**Date and Notes:** C1885. RHD III's Manchester home was built in 1885. House has little landscaping, so the photograph was possibly taken not long after the house was built. Also, pegs are still in the ground (visible in the left corner of image) indicating measurements were recently taken. Also, the baby in the photograph is most likely Edmund Trowbridge Dana who was born in 1886. The verso of the photo indicates that the baby is "Dick" (Richard Henry Dana IV (1879-1933) but this inscription is most likely incorrect, since RHD IV was born in 1879, and the house was not built until 1885). Photograph was originally in the RHD III Papers, box 17, folder 20.

**Location:** Dana Photos Box 3 (14X18), Fldr. 2

**Item No(s):** 017

**Title:** [Harvard Alumni Chorus.]

**Description:** Harvard Alumni Chorus. RHD III sits in the front row, third from the right.

**Date and Notes:** 1916 May 22. Newspaper article glued to the back is annotated with date. Photograph was originally in the RHD III Papers, box 27, folder 13.

**Location:** Dana Photos Box 3 (14X18), Fldr. 3

**Item No(s):** 018

**Title:** [Harvard Class of 1874. 40th Reunion.]

**Description:** Group photograph of the fortieth reunion of the Harvard Class of 1874. RHD III and ELD sit next to each other, third row middle. RHD III looks over the head of a gentleman with a mustache. RHD III wears a dark suit jacket. ELD wears a dark hat with dark feather.

**Date and Notes:** 1916. The fortieth reunion of the class of 1874 would have been in 1916. Photograph was originally in the RHD III Papers, box 30, folder 15.

**Location:** Dana Photos Box 3 (14X18), Fldr. 4

**Item No(s):** 019

**Title:** [Gravesite of RHD Jr.]

**Description:** RHD Jr. gravesite in Rome, Italy. Gravestone covered by ivy. Planter in front



covered by ivy and grass. Diagonal cross is the carved on stone. The stone reads: "Richard Henry Dana/ of Boston/ United States of America/ Born August 1st 1815/ Died in Rome/ January 6th 1882."

**Date and Notes:** 1887. Photo is inscribed on the verso: "1887." Photograph was originally in the RHD III Papers, box 30, folder 15.

**Location:** Dana Photos Box 3 (14X18), Fldr. 5

**Item No(s):** 020

**Title:** [Phillip Brooks. Portrait.]

**Description:** Dressed in suit jacket.

**Date and Notes:** C1885 based on apparent age of subject. Brooks godfather of HWLD.

**Location:** Dana Photos Box 26 (5X7), Env. 6

**Item No(s):** 021

**Title:** [John Ruskin (1819-1900).]

**Description:** Ruskin as elderly man.

**Date and Notes:** C1880 based on apparent age of subject. Photo found in RHD III copy of Ruskin's Stones of Venice (LONG 11647).

**Location:** Dana Photos Box 26 (5X7), Env. 7

**Item No(s):** 022

**Title:** "Gale's Eagle Mountain House/ Jackson N.H. Feb. 1890."

**Description:**

**Date and Notes:** 1890 as given in title/inscription. Image by JGT Jr.; copy in Longfellow Family Photographs.

**Location:** Dana Photos Box 27 (8X10), Env. 22

**Item No(s):** 023

**Title:** [Group on Sleigh, Jackson, N.H.]

**Description:** Large group on sleigh powered by four horses in snowy landscape.

**Date and Notes:** 1890 as given in inscription. Image by JGT Jr.

**Location:** Dana Photos Box 27 (8X10), Env. 23

**Item No(s):** 024

**Title:** "Nelson Cottage, Seaton [England]."

**Description:** Lake with swan in foreground; brick residence in background.

**Date and Notes:** 1891? as suggested by inscription.

**Location:** Dana Photos Box 28 (14X18), Env. 9

## Series B. Photograph Albums

### 1. Album of Cabinet Photographs Owned by Richard Henry Dana III (1004.002/002-001)

**Item No(s):** 001-048

**Title:** [Portraits of the Harvard Class of 1874.]

**Description:** Individual portraits of the Class of 1874. All are bust portraits. Portraits of special note include -001 Paul Dana and -009 Frank Lyman. Each individual's name inscribed most

likely by RHD III underneath each portrait.

**Date and Notes:** Images date from 1874 when RHD III's Harvard Class graduated. -009 Frank Lyman is not Francis Ogden Lyman (1846-1915). His dates are not known. He was possibly a cousin of FOL who also attended Harvard. FOL graduated from Harvard College in 1871.

**Location:** Dana Photos Box 23 (8X10 Albums)

## **2. Manchester Album of Richard Henry Dana III (1004.002/002-002)**

**Item No(s):** 001

**Title:** [Dana Beach.]

**Description:** Dana Beach in Manchester, Massachusetts. The view is from the coast covered with foliage. Dana Island (?) is also visible.

**Date and Notes:** 1891 because of inscriptions dating other similar items in the album.

**Location:** Dana Photos Box 15 (5X7), Env. 40

**Item No(s):** 002

**Title:** [Manchester Home of RHD Sr. (?).]

**Description:** A child plays on the porch of a home, most likely the Manchester home of Richard Henry Dana, Sr. (1787-1879).

**Date and Notes:** 1891 because of inscriptions dating other similar items in the album.

**Location:** Dana Photos Box 24 (Albums)

**Item No(s):** 003

**Title:** [Dana Beach.]

**Description:** Dana Beach in Manchester, Massachusetts. The view is from the sandy beach up towards the rocky coastline lined with trees. Two women are visible sitting amongst the trees.

**Date and Notes:** 1891 because of inscriptions dating other similar items in the album.

**Location:** Dana Photos Box 24 (Albums)

**Item No(s):** 004

**Title:** [Manchester Home of Richard Henry Dana, Sr. Exterior.]

**Description:** Exterior view of the home of Richard Henry Dana, Sr. (1787-1879). View is taken from the side with the front porch and surrounding property visible.

**Date and Notes:** 1891 because of inscription.

**Location:** Dana Photos Box 24 (Albums)

**Item No(s):** 005

**Title:** [Dana Beach.]

**Description:** Dana Beach in Manchester, Massachusetts. View is from the coast with the water visible and the trees in the foreground.

**Date and Notes:** 1891 because of inscriptions dating other similar items in the album.

**Location:** Dana Photos Box 24 (Albums)

**Item No(s):** 006-007

**Title:** [Woods in Manchester, Massachusetts.]

**Description:** Woods most likely near the Dana's property in Manchester, Massachusetts. -6 A path runs through the middle of the trees. -7 A small clearing is in the foreground.

**Date and Notes:** 1891 because of inscriptions dating other similar items in the album.

**Location:** Dana Photos Box 24 (Albums)

**Item No(s):** 008

**Title:** [Manchester home of Richard Henry Dana III.]

**Description:** The Manchester home of Richard Henry Dana III (1851-1931). View is taken from a coastline some distance away from the house. The house is visible in the background on top of the rocky coastline.

**Date and Notes:** 1891 because of inscription.

**Location:** Dana Photos Box 24 (Albums)

**Item No(s):** 009

**Title:** [Tennis Court.]

**Description:** Tennis court on the property of the Manchester home of Richard Henry Dana III (1851-1931). Three unidentified people play tennis. RHD III's home is barely visible through the trees.

**Date and Notes:** 1891 because of inscriptions dating other similar items in the album.

**Location:** Dana Photos Box 24 (Albums)

**Item No(s):** 010-011

**Title:** [Dana Beach.]

**Description:** Dana Beach in Manchester, Massachusetts. -10 View is of the water taken from the beach. Islands and ships are visible in the distance. -11 Beach is in the foreground. Trees line the rocky coastline.

**Date and Notes:** 1891 because of inscriptions dating other similar items in the album.

**Location:** Dana Photos Box 24 (Albums)

**Item No(s):** 012

**Title:** [Woods in Manchester, Massachusetts.]

**Description:** Woods most likely near the Dana's property in Manchester, Massachusetts. View shows a path leading up to them.

**Date and Notes:** 1891 because of inscriptions dating other similar items in the album.

**Location:** Dana Photos Box 24 (Albums)

**Item No(s):** 013

**Title:** [Dana Island (?).]

**Description:** Dana Island (?). View is from the coastline.

**Date and Notes:** 1891 because of inscriptions dating other similar items in the album.

**Location:** Dana Photos Box 24 (Albums)

**Item No(s):** 014

**Title:** [Dana Beach.]

**Description:** Dana Beach. View of the beach, rocky coastline and trees.

**Date and Notes:** 1891 because of inscriptions dating other similar items in the album.

**Location:** Dana Photos Box 24 (Albums)

**Item No(s):** 015

**Title:** [Property of Richard Henry Dana III.]

**Description:** Property near the home of Richard Henry Dana (1851-1931). A woman (possibly Edith Longfellow Dana) sits on a hammock.

**Date and Notes:** 1891 because of inscriptions dating other similar items in the album.

**Location:** Dana Photos Box 24 (Albums)

**Item No(s):** 016

**Title:** [Dana Beach.]

**Description:** Dana Beach in Manchester, Massachusetts. View is mainly of the water but includes a small amount of the rocky coastline in the middle left of the image.

**Date and Notes:** 1891 because of inscriptions dating other similar items in the album.

**Location:** Dana Photos Box 24 (Albums)

**Item No(s):** 017

**Title:** [Dana Beach.]

**Description:** Dana Beach in Manchester, Massachusetts. View is from the coastline and includes an island, possibly Dana Island, in the distance.

**Date and Notes:** 1891 because of inscriptions dating other similar items in the album.

**Location:** Dana Photos Box 24 (Albums)

## ***BIBLIOGRAPHY***

### Methodology

Ellis, Judith, ed. *Keeping Archives*. Victoria, Australia: Australian Society of Archivists, 1993.

Merriam-Webster, Inc. *Webster's New Biographical Dictionary*. Springfield, MA: Merriam-Webster Inc., 1988.

Miller, Fredric M. *Arranging and Describing Archives and Manuscripts*. Chicago: The Society of American Archivists, 1990.

U.S. Department of the Interior, National Park Service. *Automated National Catalog System User Manual*. Washington, D.C.: National Park Service, April 1987.

U.S. Department of the Interior, National Park Service, North Atlantic Region Branch of Museum Services History Cataloging Standards Committee. *Guidelines for Cataloging History Collections Using the National Park Service Automated National Catalog System*. Boston, MA: National Park Service, Summer 1993.

U.S. Department of the Interior, National Park Service. *Museum Handbook, Part II: Museum Records*. Washington, D.C.: National Park Service, September 1984.

### Subject Content

Dana, Elizabeth Ellery. *The Dana Family in America*. Boston: Wright & Potter Printing Company, 1956.

Perry, Bliss. *Richard Henry Dana: 1851-1931*. Boston and New York: Houghton Mifflin Company, 1933.

## APPENDIX A:

### LIST OF CATALOG NUMBERS

The following LONG catalog numbers were assigned to items in the Richard Henry Dana III Papers (LONG 27883).

| Catalog No. | Item   | Location in RHDIII Papers |
|-------------|--|---------------------------|
| LONG 14402  | "Cambridge Casino. Records of Minutes," 15 June 1882-29 April 1895 | Oversize Box 14, Folder 1 |
| LONG 14428  | "Civil Service of the City of New York," 1883                      | Box 18, Folder 3a         |
| LONG 16156  | Harvard Publications, 1885-1895                                    | Box 27, Folder 1          |
| LONG 16157  | Harvard – Phi Beta Kappa Announcements, 1910                       | Box 27, Folder 20         |
| LONG 16158  | Harvard Publications, 1885-1895                                    | Box 27, Folder 1          |
| LONG 16159  | Harvard Publications, 1903-1906                                    | Box 27, Folder 2          |
| LONG 16160  | Harvard Publications, 1885-1895                                    | Box 27, Folder 1          |
| LONG 16545  | Harvard Publications, 1903-1906                                    | Box 27, Folder 2          |
| LONG 16546  | Harvard Publications, 1885-1895                                    | Box 27, Folder 1          |
| LONG 16547  | Harvard Publications, 1903-1906                                    | Box 27, Folder 2          |
| LONG 16548  | Harvard Law School – Announcements, 1887-1888 & 1892-1893          | Box 27, Folder 18         |
| LONG 16549  | Harvard Publications, 1885-1895                                    | Box 27, Folder 1          |
| LONG 16550  | Harvard Publications, 1885-1895                                    | Box 27, Folder 1          |
| LONG 16551  | Harvard – Class of 1874, Secretary's Report #1, 1874               | Box 26, Folder 12         |
| LONG 16552  | Class of 1874, Poem, 1880  | Box 26, Folder 11         |
| LONG 16553  | Harvard – Class of 1874, Secretary's Report #2, 1877               | Box 26, Folder 12         |
| LONG 16554  | Harvard – Class of 1874, Secretary's Report #4, 1884               | Box 26, Folder 12         |
| LONG 16555  | Harvard – Class of 1874, Secretary's Report #3, 1880               | Box 26, Folder 12         |
| LONG 16556  | Harvard – Class of 1874, Secretary's Report #5, 1884-1889          | Box 26, Folder 13         |
| LONG 16557  | Harvard – Class of 1874, Secretary's Report #6, 1889-1894          | Box 26, Folder 14         |
| LONG 16558  | <i>Harvard – Class of 1874, Fifteenth Report, 1934</i>             | Box 1, Folder 23          |
| LONG 16559  | Harvard Publications, 1885-1895                                    | Box 27, Folder 1          |
| LONG 16560  | Harvard Publications, 1885-1895                                    | Box 27, Folder 1          |
| LONG 17706  | <i>The American Lawyer</i> , 1906                                  | Addendum Box 1, Folder 8  |
| LONG 17712  | <i>Civil Service Record</i> , 1889-1891 [not all issues]           | Addendum Box 1, Folder 7  |

| <b>Catalog No.</b> | <b>Item</b>  | <b>Location in RHDIII Papers</b> |
|--------------------|--|----------------------------------|
| LONG 26002         | Letter to RHD III from Middlesex County Commissioners, 1905  | Box 6, Folder 7                  |
| LONG 26113         | <i>Double Taxation</i>   | Box 25, Folder 16                |
| LONG 26118         | Civil Service Lectures   | Box 23, Folder 12                |
| LONG 26120         | <i>Catalogue of the Officers and Students of Harvard University, 1870</i>  | Addendum Box 1, Folder 1         |
| LONG 26121         | <i>Catalogue of the Officers and Students of Harvard University, 1871</i>  | Addendum Box 1, Folder 2         |
| LONG 26122         | <i>Catalogue of the Officers and Students of Harvard University, 1874</i>  | Addendum Box 1, Folder 4         |
| LONG 26123         | <i>Harvard Index, 1874</i>   | Addendum Box 1, Folder 5         |
| LONG 26124         | <i>Harvard University Catalogue, 1876</i>  | Addendum Box 1, Folder 6         |
| LONG 26125         | Harvard College, Class of 1874 Fifteenth Report, 1934  | Box 1, Folder 23                 |
| LONG 26145         | <i>Baccalaureate Sermons and Oration and Poem, Harvard University, 1874</i>  | Addendum Box 1, Folder 3         |
| LONG 26209         | Massachusetts Legislative Acts re: Boston Elevated Railway Company, 1918   | Box 30, Folder 18a               |
| LONG 26219         | <i>Harvard University Catalogue, 1876</i><br>(fragment of above)   | Addendum Box 1, Folder 6         |
| LONG 26294         | General Convention, 1904   | Box 28, Folder 4a                |
| LONG 26307         | Civil Service Lectures, 1889-1922  | Box 23, Folder 12                |
| LONG 26308         | Superannuation #62h: Reports, 1890-1908  | Box 21, Folder 9                 |
| LONG 26309         | Massachusetts Legislative Acts re: Boston Elevated Railway Company, 1905   | Box 30, Folder 18a               |
| LONG 26310         | <i>The Australian Ballot System of Massachusetts, 1911</i>   | Box 25, Folder 11a               |
| LONG 26427         | Booklet – <i>A Coach Drive at the Lakes, 1891</i>  | Box 30, Folder 11a               |
| LONG 26440         | General Convention, 1904   | Box 28, Folder 4a                |
| LONG 26441         | <i>Century and a Half: Address of RHD III at Celebration of 150<sup>th</sup> Anniversary of Christ Church, 16 October 1911</i> | Box 3, Folder 19a                |
| LONG 26443         | General Convention, 1904   | Box 28, Folder 4a                |
| LONG 26515         | Massachusetts Reform Club #246,<br>Correspondence and Additional Material,<br>1902-1910, n.d.                                  | Box 24, Folder 13                |