

Finding Aid

Washington Allston (1779-1843) Materials, 1798-1966
(bulk dates: 1939-1949)

As Compiled by H.W.L. Dana (1881-1950)

Edition 4.0 (2019)

Collection Catalog No. LONG 20258



DOCUMENT INFORMATION AND VERSION HISTORY

<i>Edition</i>	<i>Date of Revision</i>	<i>Author(s)</i>
1.0	1997	Jonathan Bohan, Northeast Museum Services Center
2.0	1999	D.E.W. Godwin, Northeast Museum Services Center
3.0	September 2007	D.E.W. Godwin, Jonathan Bohan, Ann Marie Dubé, Anita Israel, John J. Prowse, Margaret Welch, Northeast Museum Services Center
4.0	February 2019	Kate Hanson Plass, LONG

Figure 1 (cover): Washington Allston, Self-Portrait, ca. 1801. Museum of Fine Arts, Boston.
Washington Allston (1779-1843) Materials (LONG 20258), Series VII. Photographs and Negatives.

CONTENTS

List of Illustrations.....	ii
Preface.....	iii
Copyright and Privacy Restrictions	iv
Introduction.....	5
Part 1: Collection Description.....	7
Scope and Content Note	9
Series Descriptions	12
Part 2: Biographical Data.....	14
Washington Allston (1779-1843)	16
Henry Wadsworth Longfellow Dana (1881-1950).....	20
Part 3: Collection Listing.....	21
Series I. Biography	21
Series II. Works	22
Series III. Friends.....	24
Series IV. Trust.....	25
Series V. Binders re: A) Biography, B) Works, and C) Friends.....	25
A. Biography.....	25
B. Works	26
C. Friends.....	26
Series VI. Index Cards	27
Series VII. Photographs and Negatives	27
Series VIII. Lantern Slides (cataloged as LONG 20190-20255).....	50
Bibliography	54
Appendix A: List of Catalog Numbers	55
Appendix B: List of Books, Magazines, and Catalogs	62
Washington Allston's Library	62
Martha Remington (Dana) Allston's Library	64
Works by Washington Allston.....	65
Reference Works Regarding Washington Allston.....	66
Magazines	68
Appendix C: Washington Allston's Artwork	70

LIST OF ILLUSTRATIONS

Figure 1 (cover): Washington Allston, Self-Portrait, ca. 1801. Museum of Fine Arts, Boston. Washington Allston (1779-1843) Materials (LONG 20258), Series VII. Photographs and Negatives.....	1
Figure 2: Gilbert Stuart, <i>Washington Allston</i> . Metropolitan Museum of Art, New York. Washington Allston (1779-1843) Materials (LONG 20258), Series VII. Photographs and Negatives.....	15
Figure 3: Washington Allston's Studio, corner of Magazine and Auburn Streets, Cambridgeport. Washington Allston (1779-1843) Materials (LONG 20258), Series VII. Photographs and Negatives.....	18
Figure 4: Bachrach, <i>Henry Wadsworth Longfellow Dana</i> . Henry Wadsworth Longfellow Dana Papers (LONG 17314), Series IX. Collected Materials.....	19
Figure 5: Washington Allston, <i>Washington Irving</i> , 1805. Washington Allston (1779-1843) Materials (LONG 20258), Series VII. Photographs and Negatives.	20
Figure 6: Washington Allston, <i>Dido and Anna</i> , ca. 1813-1815. The Lowe Art Museum, University of Miami, Florida. Washington Allston (1779-1843) Materials (LONG 20258), Series VII. Photographs and Negatives.....	53

All images courtesy National Park Service, Longfellow House-Washington's Headquarters National Historic Site.

PREFACE

This document, the fourth edition of *Finding Aid for Washington Allston (1779-1843) Materials, 1798-1966 (bulk dates 1939-1949) -- as compiled by H.W.L. Dana (1881-1950)*, describes research papers collected by Henry Wadsworth Longfellow Dana, a grandson of Henry Wadsworth Longfellow. This edition incorporates changes and corrections noted by LONG Archives Specialist Anita Israel, 2007-2012, and formatting revisions by LONG Museum Technician Kate Hanson Plass.

A draft of this finding aid was issued in June 1997 and was the result of two cataloging projects carried out by the Northeast Museum Services Center during 1994 and in 1997; a second edition was issued in 1999. The third edition, issued in September 2007, reflected the addition of materials in 2007. All earlier editions are obsolete with the release of the current document.

The catalogers in all phases of the project expressed their gratitude towards staff at Longfellow House – Washington’s Headquarters National Historic Site for their assistance in carrying out this work, in particular, Site Manager Jim Shea and Museum Specialist Michele Clark.

This document represents many hours of work recording details about the items herein described. The reader should expect a reasonable degree of human error and consequently rely on personal observation of the actual items.

COPYRIGHT AND PRIVACY RESTRICTIONS

The copyright law of the United States (Title 17, *United States Code*) governs the making of photocopies or other reproductions of copyrighted materials. The Privacy Act of 1974 (5 *United States Code* 552a) governs the use of materials that document private individuals, groups and corporations.

Under certain conditions specified in the law, libraries and archives are authorized to furnish a reproduction if the document does not infringe the privacy rights of an individual, group or corporation. These specified conditions of authorized use include:

- non-commercial and non-profit study, scholarship, research or teaching
- criticism or commentary
- as a NPS preservation or security copy for research use
- as a research copy for deposit in another institution

If the researcher later uses a copy or reproduction for purposes in excess of "fair use," the researcher is personally liable for copyright, privacy, or publicity infringement and agrees to indemnify the NPS from any legal action as a result of the error. Permission to obtain a photographic, xerographic, digital or other copy of a document **doesn't** indicate permission to publish, exhibit, perform, reproduce, sell, distribute or prepare derivative works from the document without permission from the copyright holder and from any private individual, group or corporation shown or otherwise recorded.

Permission to publish, exhibit, perform, reproduce, prepare derivative works from, sell or otherwise distribute the item must be obtained separately in writing from the holder of the original copyright (or if the creator is dead from his/her heirs) as well as from any individual(s), groups or corporations whose name, image, recorded words or private information (e.g. employment information) may be reproduced in the source material. The holder of the original copyright **isn't** necessarily the National Park Service. The National Park Service is not legally liable for copyright, privacy or publicity infringement when materials are wrongfully used after being provided to researchers for "fair use."

This institution reserves the right to refuse to accept a copying order if fulfillment of the order is judged in violation of copyright or federal or state privacy or publicity law. This institution also places restrictions on the use of cameras, photocopiers and scanners in the research room.

INTRODUCTION

This finding aid describes the Washington Allston (1779-1843) Materials, 1798-1966 (bulk dates 1939-1949) -- as compiled by H.W.L. Dana (1881-1950). The collection consists of various items collected by Henry Wadsworth Longfellow Dana (whose maternal grandfather was Henry Wadsworth Longfellow) in the course of researching the life and works of Washington Allston, considered to be America's first romantic artist. There also are a few notes and correspondence of H.W.L. Dana's father, Richard Henry Dana III, and of his aunt, Elizabeth Ellery Dana, as well as a small amount of material added after H.W.L. Dana's death. The Washington Allston materials, including both H.W.L. Dana's research as well as Allston's library, were accessioned into the Longfellow House-Washington's Headquarters National Historic Site museum collection as part of accession LONG-1 when the Longfellow House Trust, which was formed in 1913, donated the Longfellow house and its contents to the National Park Service in 1973.

Washington Allston's second wife, Martha Remington Dana Allston, was the sister of Richard Henry Dana, Sr. (H.W.L. Dana's paternal great-grandfather). Upon Washington Allston's death, Mrs. Dana's nephew, Richard Henry Dana, Jr., became trustee of the Washington Allston Trust, a fund which had arisen from shares purchased by Allston's friends to support him during his twenty-six-year work on his masterpiece *Belshazzar's Feast* which remained unfinished at the time of his death. Trusteeship passed to Richard Henry Dana, Jr.'s son, Richard Henry Dana III. H.W.L. Dana -- who was a lifetime resident of the Craigie house, the home of his maternal grandparents Henry and Fanny Longfellow -- became trustee upon the death of his father, Richard Henry Dana III. H.W.L. Dana was charged with the care, conservation, and storage of Allston's unsold works which became the property of the trust. He was also responsible for purchasing other works which came up for sale. Upon H.W.L. Dana's death in 1950, a portion of his papers, including the Washington Allston materials, became the property of the Longfellow House Trust, who later donated them to the National Park Service in 1973, as noted above.

In the fall of 1994, Ann Marie Dubé, Anita Israel, and John J. Prowse of the Collections Accountability Program (now the Northeast Museum Services Center) undertook a project to rehouse and catalog the Washington Allston materials. A survey of the papers revealed that they dealt with four subject categories: biographical material about Washington Allston; information on his works; papers dealing with his friends; and materials resulting from H.W.L. Dana's role as trustee of the Washington Allston Trust. The catalogers grouped the materials under these four headings but maintained original order within each subject group. The catalogers found that the collection also contained numerous loose-leaf binders. The catalogers removed the material from the binders and grouped the loose papers under the following subject headings (matching those outlined above): biographical material about Washington Allston; information on his works; and papers dealing with his friends. The catalogers found that the collection contained a few index cards; these were left in original order. Photographs and negatives found throughout the collection, as well as oversize materials, were removed by the catalogers to separate storage. The collection was cataloged into the Automated National Catalog System as LONG 20258, a catalog card was printed, and a box and folder list was drafted. In addition, the collection of lantern slides was cataloged separately from the main collection, with a catalog record created for each slide. The same was done for the books, magazines, and catalogs in Allston's library.

In the spring of 1997, Jonathan Bohan (museum technician with the Society for the Preservation of New England Antiquities) drafted a finding aid, which was distributed in June 1997. Diane Godwin, archivist with the Northeast Museum Services Center, revised the finding aid and distributed it in final in July 1999. In 2007 Margaret Welch, another archivist with the Northeast Museum Services Center, incorporated materials identified after the first phases and issued the third edition of the finding aid.

The processors separated oversize items, which were listed as Series IX in the third edition of the finding aid. Items in this series are grouped together because of their common size. All of these items are intellectually associated with the materials in the other series but are too large to be stored in the letter and legal sized boxes. In this fourth edition of the finding aid, they are listed under the series with which they are intellectually associated.

Individually cataloged books, magazines, catalogs, and printing plates were, which were listed as Series X in the third edition of the finding aid, were shelved with the rest of the historic library and museum collection in 2010. They are listed in this finding aid under Appendix B.

PART 1:

COLLECTION DESCRIPTION

SCOPE AND CONTENT NOTE

Washington Allston (1779-1843) Materials, 1798-1966 (bulk dates 1939-1949) -- as compiled by H.W.L. Dana (1881-1950)

Accession number: LONG-1.

*Catalog numbers*¹: Collection: LONG 20258.

Items cataloged individually: LONG 14497, 14503, 14522-14523, 14537-14543, and 14545-14548, 20190-20255, and 25612. These numbers break down as follows:

- Individual items within the collection (LONG 20258): LONG 14497, 14503, 14522-14523, 14537-14543, 14545-14548, and 25612.
- Lantern slides: LONG 20190-20255.

Quantity: 10.75 linear feet, comprised of two sets of material:

- 10.33 linear feet of files (approximately 16,528 items) cataloged as LONG 20258 and including 16 items cataloged individually as LONG 14497, 14503, 14522-14523, 14537-14543, 14545-14548, and 25612.
- 65 lantern slides and one box, comprising 0.42 linear feet, cataloged as LONG 20190-20255.

Storage: 3 letter size archives boxes, 1 half letter size archives box, 6 legal size archives boxes, 2 half legal size archives boxes, 1 index card box, 3 photograph boxes, 2 flat boxes, and 1 wooden lantern slide box.

Location: Longfellow House-Washington's Headquarters National Historic Site, 105 Brattle Street, Cambridge, Massachusetts 02138-3407, (617) 876-4491.

Description: The Washington Allston (1779-1843) Materials, 1798-1966 (bulk dates 1939-1949) -- as compiled by H.W.L. Dana (1881-1950) -- consist of the research notes, manuscripts, correspondence, index cards, photostats, photographs, lantern slides and other material collected by Henry Wadsworth Longfellow Dana in the course of researching Washington Allston, considered to be America's first romantic artist. The collection also includes a small number of items which were added after the death of Dana in 1950. H.W.L.

¹ See Appendix for a list of catalog numbers and object names.

Dana used this research material for numerous articles and lectures on Washington Allston which he planned to expand into a complete biography, entitled *Washington Allston: Romantic Poet and Author*, but this work was never finished. Dana also collaborated with Edgar Preston Richardson of the Detroit Institute of Arts on a catalogue raisonné of Allston's works and provided information for several Allston exhibits.

The collection is organized into eight series: I. Biography; II. Works; III. Friends; IV. Trust; V. Binders re: biography, works, and friends; VI. Index Cards; VII. Photographs and Negatives; and VIII. Lantern Slides.

Short biographies of Washington Allston and of H.W.L. Dana are provided in this finding aid.

Preferred Citation:

[Identification of item], in the Washington Allston (1779-1843) Materials, 1798-1966 (LONG 20258), Longfellow House-Washington's Headquarters National Historic Site.

Related Materials:

The museum collection at Longfellow House-Washington's Headquarters NHS includes works of art by Washington Allston, largely charcoal or ink studies. These are listed in Appendix C.

The papers of H.W.L. Dana are described in the *Finding Aid for Henry Wadsworth Longfellow Dana (1881-1950) Papers, 1744-1971 (bulk dates 1850-1950)*.

Estate documents for Washington Allston are found in the Richard Henry Dana III Papers, Series F. Dana Family Records.

The museum collection at Longfellow House-Washington's Headquarters NHS includes eight engraving plates used to illustrate two articles published by H.W.L. Dana in *The Proceedings of the Cambridge Historical Society*: "Allston at Harvard" (1948), and "Allston in Cambridgeport" (1948). They are cataloged individually as LONG 21505-7, 21510-12, and 21162-3. An additional engraving plate of Allston's painting "Rebecca at the Well" is cataloged individually as LONG 14464.

The historic library at Longfellow House-Washington's Headquarters NHS includes volumes from Washington Allston's library and books collected by H.W.L. Dana and family for reference. These books are detailed in Appendix B.

Organization: Washington Allston (1779-1843) Materials, 1798-1966 (bulk dates 1939-1949) -- as compiled by H.W.L. Dana (1881-1950)

- I. Biography
- II. Works
- III. Friends
- IV. Trust
- V. Binders re:
 - A. Biography
 - B. Works
 - C. Friends
- VI. Index Cards
- VII. Photographs and Negatives
- VIII. Lantern Slides

SERIES DESCRIPTIONS

Series I. Biography

This series consists of H.W.L. Dana's research material and writings on the life of Washington Allston, including notes, lists, genealogies, correspondence, photographs, newspaper clippings and articles, brochures, catalogs and photostats. Within the series, all materials are arranged in the order in which they were found, with original folder titles retained.

Series II. Works

The materials in this series were generated by H.W.L. Dana's efforts to locate all extant works of Washington Allston and to obtain a photograph of each one. There are additional materials which resulted from his efforts to document all known works - including those lost or destroyed - for inclusion in a catalogue raisonné. This series contains correspondence, publications, photographs, and photostats of Allston's correspondence, arranged roughly by subject.

Series III. Friends

Allston's closest friends included some very well-known people, such as Samuel Taylor Coleridge, Washington Irving, and John Vanderlyn. This series contains biographical materials, correspondence, and correspondence copies, arranged roughly alphabetically.

Series IV. Trust

This series consists primarily of H.W.L. Dana's correspondence to various museums in his efforts to find a satisfactory repository for the Allston paintings owned by the Washington Allston Trust, a fund which had arisen from shares purchased by Allston's friends to support him during his twenty-six-year work on his masterpiece *Belshazzar's Feast*. There is also some correspondence concerning the purchase of Allston works that were for sale, as well as dealing with the conservation of some paintings.

Series V. Binders re: A. Biography, B. Works, and C. Friends

There are three sets of loose leaf binders, dealing with three subjects (matching those outlined above): biography, works, and friends. The binders contain H.W.L. Dana's research notes, lists, and indices on these subjects, as well as drafts for the various chapters of his Allston biography. The papers which were contained in the binders have been transferred to folders, with the original titles retained.

Series VI. Index Cards

This series is comprised primarily of index cards on which are citations for books and articles used by H.W.L. Dana in his research. Also included are several cards with quotes, postcards relating to Dana research, and a page torn from an advertisement for the Carnegie Book Shop in New York City. The index cards are arranged in sections with tabbed dividers, several tabs

missing. Sections include 1861 Monaldi, 1850 Lectures, Addresses, Quotations, an alphabetical arrangement by author and subject, and chronological tabs (1800, 1843, 1850, 1860, 1880).

Series VII. Photographs and Negatives

Photographs and negatives found throughout the collection described above were removed to separate storage (boxes 13-15). The photographs and negatives are arranged in the order of the collection. Box 16 contains glass plate negatives separated from the main collection. Box 17 contains negatives of Allston works.

Series VIII. Lantern Slides (cataloged as LONG 20190-20255)

This series is comprised of a wooden box containing sixty-five lantern slides, which were apparently made by H.W.L. Dana in 1943 for a lecture on Washington Allston commemorating the 100th anniversary of Allston's death. The slides and box were cataloged individually as LONG 20190-20255 and therefore are not included in the item count for LONG 20258.

PART 2:

BIOGRAPHICAL DATA



Figure 2: Gilbert Stuart, *Washington Allston*. Metropolitan Museum of Art, New York. Washington Allston (1779-1843) Materials (LONG 20258), Series VII. Photographs and Negatives.

WASHINGTON ALLSTON (1779-1843)²

Washington Allston, born 5 November 1779 in South Carolina, was considered America's first romantic artist. Painting tradition in America during the eighteenth century was based on portrait painting, both large oils and miniatures. Allston became the first American painter not dependent on portraiture for his livelihood, painting instead romantic landscapes and scenes based on literature. He was noted for his dramatic subject matter, use of light, and atmospheric color.

The son of William A. Allston, a wealthy plantation owner who had served in the Revolutionary War, Washington Allston was named for George Washington. In 1781 his father died, and four years later his mother, Rachel Moore, married Dr. Henry Collins Flagg of Newport, Rhode Island. Allston's early education took place in Charleston, but at the age of eight he was sent to Newport to study with Robert Rogers in preparation for Harvard College. He began to develop his artistic interests and received his earliest art instruction at that time. He became friendly with some artists, but perhaps more importantly, he formed a friendship with William Ellery Channing, the future Unitarian minister, and Channing's sister Ann.

Allston entered Harvard College in 1796, a year after Channing began his studies there, and graduated in 1800. While at Harvard, Allston continued the classical education he had begun under Rogers' tutelage, and this was reflected in the subject matter of his paintings. He also formed abiding friendships with people who would be significant to his life and career, such as Edmund Trowbridge Dana and Leonard Jarvis. He continued drawing and painting while in college, and by the time he graduated had determined to pursue an artistic career.

Following graduation from Harvard, and after a visit to South Carolina to see his ailing stepfather (who died early in 1801), Allston set off for Europe to study art. He arrived in London with his friends, Edmund Trowbridge Dana and miniaturist Edward Malbone, and commenced study at the Royal Academy under Benjamin West. While in London, Allston became friendly with John Vanderlyn and in 1803 travelled with him to Paris via Holland. In Paris they both exhibited paintings in the 1804 Salon, becoming the earliest Americans to do so. After a ten-month stay in Paris, Allston went to Italy via Switzerland, arriving in Rome in November 1804. He soon formed lasting friendships with Washington Irving and with Samuel Taylor Coleridge, who arrived in Rome in December 1805. Fearing the invasion of Napoleon's army, Coleridge hastily left Italy in 1806 and in March 1808 Allston sailed for home, fearing America would soon be involved in the Napoleonic wars.

On his return to America, Allston established himself as a professional painter in Boston, and on 19 June 1809 married his childhood friend, Ann Channing, after an eleven-year courtship. He became a good friend and close colleague of Gilbert Stuart, and during this period Allston

² Information for this biography came from three sources: 1) William H. Gerds & Theodore E. Stebbens Jr., *"A Man of Genius:" The Art of Washington Allston* (Boston: The Museum of Fine Arts, 1979); 2) Nathalia Wright, ed., *The Correspondence of Washington Allston* (Lexington, KY: The University Press of Kentucky, 1993); and 3) George Iles, *Leading American Inventors*, Biographies of Leading Americans, W.P. Trent, ed. (New York: Henry Holt and Company, 1912).

produced his greatest number of portraits, reflecting the continuing theme of artistic preference in America.

In 1811 Washington Allston returned to London with his wife and his young student, Samuel F.B. Morse. He renewed his close friendship with Samuel Coleridge and through him met William Wordsworth, Robert Southey, and art patron Sir George Beaumont. He also renewed his relationship with his old teacher and mentor Benjamin West. These eight years that he spent in England, and primarily in London, were the period of his greatest success in the creation of his major historical paintings, in his patronage by English art connoisseurs, and in his opportunity for self-expression. However, he also endured periods of ill health and great financial set-backs. Early in 1815 his wife fell ill and died shortly thereafter, which left Allston severely depressed and unable to paint. The support of his friends, especially Coleridge, helped him through this severe trial, which was compounded several months later by the departure of Morse for America.

By the end of 1815, however, Allston reemerged into London society, visiting and dining with American minister John Quincy Adams, and continuing with his painting. In September 1817 Allston again travelled to Paris with his friends and colleagues William Collins and Charles Leslie. They spent six weeks studying paintings at the Louvre and admiring contemporary French painting. This visit to Paris seemed to infuse Allston with renewed creative energy, for on his return to London he started several major paintings. It was during this period that he started work on his great canvas *Belshazzar's Feast*.

Although he was at the height of his career in England, in 1818 Washington Allston decided to return to the United States against the advice of his friends. He was voted in as an associate of the Royal Academy after his return to America, and in Boston he was well patronized, his reputation having preceded him. He continued to suffer severe economic restrictions, however, partly because the prices he received were comparatively low (as most of the pictures were relatively small) and because many of his paintings remained unfinished. After two years in America, Allston finally returned to work on *Belshazzar's Feast*. He invited his friend Gilbert Stuart to inspect and criticize the picture, which proved disastrous. Stuart made suggestions concerning the perspective of the painting which caused Allston to rework the entire composition. In October 1821 he reported the picture two-thirds finished, but each new effort seemed to engender more changes. In February of 1823 he said he hoped to finish it by May, and indeed, it was reported almost finished by Chester Harding who saw it in 1823.

The other hindrance to the completion of *Belshazzar's Feast* was the result of good will. In order to free Allston from pecuniary pressures and allow him the time to finish his masterpiece, twelve wealthy friends and patrons subscribed a sum of \$10,000 to be used for the purchase of the finished painting. The money was entrusted to a group of three trustees, so Allston could draw on the funds when needed. The painting was so close to completion in 1827 that a frame was ordered for it, but he did not finish it then. Ostensibly, one of Allston's problems in completing the work was having a studio large enough to view it from a great enough distance to properly correct the perspective. When given the use of a large studio, he did not unroll the canvas for many months, and when he resumed work on it, reportedly blotted out four years' work. At the end of the decade he lost the use of the large studio, so returned again to a variety of themes.

In 1830 Washington Allston finally married Martha Remington Dana after a nine-year

engagement. Miss Dana was the sister of Allston's long-time friends Edmund Trowbridge Dana and Richard Henry Dana, Sr. (Henry Wadsworth Longfellow Dana's paternal great-grandfather), and a cousin of Allston's first wife Ann Channing. The couple moved into a house in Cambridgeport, and a year later a separate studio building was completed. Although the studio was large enough to accommodate paintings of tremendous size, *Belshazzar* remained rolled up for eight more years. During this time Allston resumed work on the more immediately remunerative smaller pictures and planned larger compositions which were never completed. He received many visitors at his house and studio, including Thomas Sully, Washington Irving, John J. Audubon, Asher Durand, Thomas Cole, and Charles Dickens.

In 1836, Allston was offered a commission to paint two of the panels of the Capitol rotunda. His old friends, Leonard Jarvis and John Quincy Adams were members of the Joint Congressional Committee appointed to contract with artists for this purpose, but Allston declined this offer, pleading his commitment to finish *Belshazzar* and other commissions. He pressed that one of the panels be awarded to Morse, but the committee did not accept his suggestion.

In 1839, *Belshazzar* was unrolled again, and Allston continued to work on it until his death, abandoning most other works. In June of 1843 he started complaining of pains on his left side and on the evening of 9 July he died, leaving his masterpiece unfinished after twenty-six years. His funeral was held the next evening, with his body being carried to the Cambridge Burying Ground in a torchlight parade by Harvard students and laid in the Dana tomb.

Washington Allston was also an author, having published a book of poetry, *The Sylphs of the Seasons with other Poems*, in 1813, and, in 1841, *Monaldi*, a gothic novel set in eighteenth century Rome, Florence, and Naples. His *Lectures on Art* was published posthumously in 1850.

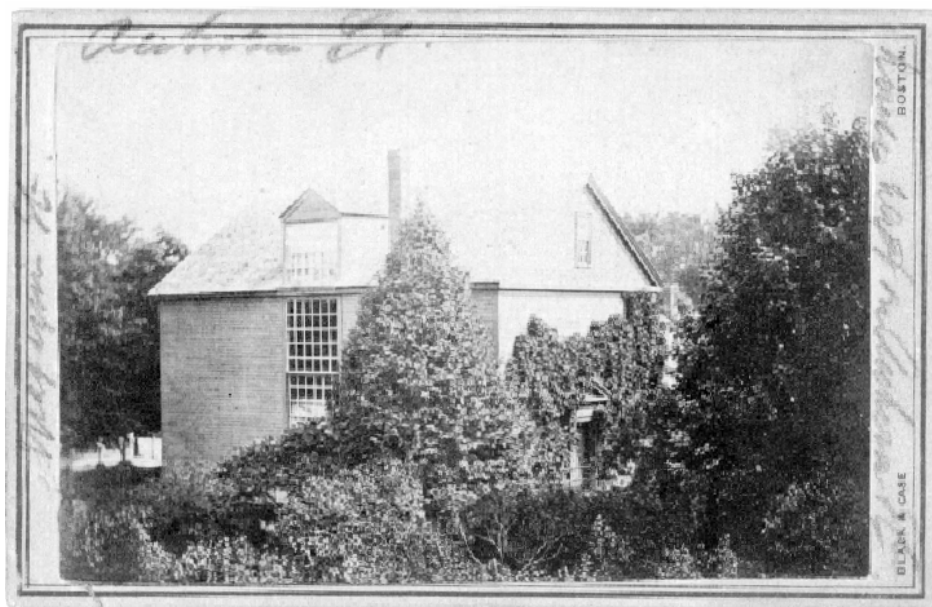


Figure 3: Washington Allston's Studio, corner of Magazine and Auburn Streets, Cambridgeport. Washington Allston (1779-1843) Materials (LONG 20258), Series VII. Photographs and Negatives.



Figure 4: Bachrach, *Henry Wadsworth Longfellow Dana*.
Henry Wadsworth Longfellow Dana Papers (LONG 17314), Series IX. Collected Materials.

HENRY WADSWORTH LONGFELLOW DANA (1881-1950)³

H.W.L. Dana was born in Boston on 26 January 1881 to Edith Longfellow and Richard Henry Dana, III. Dana had two famous grandfathers: Henry Wadsworth Longfellow was Dana's maternal grandfather and Richard Henry Dana, Jr., was his paternal grandfather. Dana was a great grand-nephew of Washington Allston.

Dana was educated at the Browne and Nichols School in Cambridge and at Harvard University. After earning a PhD in 1910 he became an instructor and then professor of comparative literature. In 1917 he was dismissed from his post at Columbia University due to his pacifist beliefs, and from that point he lectured at various venues on both comparative literature and Soviet drama, in which he developed an expertise.

Dana was also interested in his family history and in the history of the Longfellow house. He researched the genealogy of both sides of his family and wrote many articles about his famous ancestors and about the house. He also did a great deal of research on the life and works of Washington Allston, intending to write a biography of him. This work was never finished, although selected chapters were published by the Cambridge Historical Society. Dana contributed notes for a Washington Allston exhibit mounted by the Detroit Institute of Arts and the Boston Museum of Fine Arts in 1947 and collaborated with Detroit's Edgar Preston Richardson on a catalogue raisonné of the existing and recorded paintings of Washington Allston. In 1943 Dana prepared and delivered a lecture (illustrated with lantern slides included in this collection) on Washington Allston in honor of the centennial of Allston's death.

Upon the death of his father in 1931, H.W.L. Dana became the trustee of the Washington Allston Trust, a fund which had arisen from shares purchased by Allston's friends to support him during his twenty-six-year work on his masterpiece *Belshazzar's Feast*. Dana consequently inherited the stewardship of Allston's works which had remained unfinished at the time of his death. Dana was also responsible for the fund, which was earmarked for the preservation of the works and for the purchase of others as they became available. The Allston works belonging to the trust and some belonging to the Dana family had been deposited at the Museum of Fine Arts in Boston. In 1941 the museum requested they be removed. Harry entered into correspondence with many museums and repositories across the country trying to find a suitable place for the collection. Meanwhile, they were temporarily housed in the Longfellow house and then in Harvard University's Fogg Art Museum, with the hope that ultimately they would all go there. Shortly thereafter, however, the Fogg received a large collection and only had space for a few of the Allstons. Finally, in 1956, six years after the death of H.W.L. Dana, the Allston works were distributed among eight public collections.

³ Information for this biography came from four letters written by Henry Wadsworth Longfellow Dana: 1) to Robert Rosegrant, 1 February 1941; 2) to Mr. Eliot, 21 March 1942; 3) to Anna Wells Rutledge, 21 March 1942; and 4) to Mrs. Howell, 6 April 1950. These letters can be found in Series IV. Trust. *See also the Finding Aid for the Henry Wadsworth Longfellow Dana (1881-1950) Papers, 1744-1971 (bulk dates 1850-1950).*

PART 3:

COLLECTION LISTING



Figure 5: Washington Allston, *Washington Irving*, 1805.
Washington Allston (1779-1843) Materials (LONG 20258), Series VII. Photographs and Negatives.

Series I. Biography⁴

	Box	Folder
Washington Allston, 1779-1843, romantic poet and painter, 1927-1947 ⁵	1	1
Magazines, galley proofs, 1944-1948	1	2
<i>Washington Allston</i> by H.W.L. Dana	1	3
Allston, 1925-1945 ⁶	1	4
Allston -- lock of hair	1	5
Flagg, [1947?]	1	6
Charleston, SC, 1940-1949	1	7
Clippings on Allston, 1839-1947 ⁷	1	8
Clipping(s) from the <i>Advertiser and Patriot</i> , 1843-1844 [oversize]	18	1
Clipping(s) from the <i>New York Mirror</i> , 15 June 1839 [oversize]	18	2
Letters, 1947-1950 [South Carolina] ⁸	1	9
Cambridge Historical Society, 1948	1	10
Books and biographies of Allston, 1945-1960	2	1
Books and biographies of Allston, 1945-1960; notebook formerly containing extract publications of the Whitney Museum of Art, et al	2	2
Allston at Harvard, 1796-1880 ⁹	2	3
Allston in Newport, 1938-1947 ¹⁰	2	4
Portraits of Allston, 1889-1946 ¹¹	2	5
Town of Allston [Massachusetts], 1919-1943	2	6
"Allston," 1946-1949 ¹²	2	7
Symphony Hall exhibition, 1945-1947 ¹³	2	8
Photostats of Allston annotations in Dunlap <i>History of the ... Arts</i> , n.d. ¹⁴	2	8a
Street map (photostat)--London, 1799	18	8
Street map (photostat)--London, 1799	18	9
Genealogical charts (photostats) of John Allston of St. John, Berkeley ¹⁵	18	10

⁴ The oversize materials in box 18, folders 8-17 were found together in an oversize box and were arranged according to the established outline (see the Scope and Content Note).

⁵ Photograph removed to box 13, folder 1.

⁶ Photographs removed to box 13, folders 2-8.

⁷ Oversize items removed to box 18, folders 1-2.

⁸ Includes book (LONG 14503). Photographs removed to box 13, folders 9-12.

⁹ Photograph removed to box 13, folder 13.

¹⁰ Photographs removed to box 13, folders 14-19.

¹¹ Photographs removed to box 13, folders 20-39.

¹² Photograph removed to box 13, folder 40.

¹³ Includes bulletins (LONG 14540-14543).

¹⁴ It is unclear where the original volume is currently located. Photostats removed from 1918 edition of William Dunlap's *History of the Rise and Progress of the Arts of Design in the United States*, Vol. 2 (LONG 14513).

	Box	Folder
Map (photostat) -- South Carolina shoreline, vic. Georgetown, 1888	18	11
Map (photostat) -- South Carolina shoreline, vic. Georgetown	18	12
Map (photostat) -- South Carolina shoreline, Long Bay and All Saints Parish	18	13
Print -- portrait of Washington Allston [Mezzotint by Sartain after painting by Chester Harding]	18	14

Series II. Works¹⁶

	Box	Folder
Spenser, Edmund -- publications, correspondence, 1942-1944 ¹⁷	2	9
Coleridge, Samuel Taylor -- notebooks, correspondence, 1938-1947 ¹⁸	2	10
Magazine, bulletins, 1850 ¹⁹	2	11
Monaldi, 1848-1948	3	1
Magazines, 1843	3	2
Magazines, 1947	3	3
Magazines, 1944-1956	3	4
Catalogs, magazine tear sheets, 1936-1945	3	5
Broadside, n.d. [ca. 1860s] ²⁰	3	6
Oversize item(s) re: Grand Concert, Baltimore Museum of Art	18	3
Magazine, correspondence, 1944-1948	3	7
Manuscript, 1947	3	8
Magazine reprint, 1960	3	9
Allston exhibition, 1947-1948 (Part 1 of 2) ²¹	3	10
Oversize item(s) re: Allston's studio	18	4
Allston exhibition, 1947-1948 (Part 2 of 2) ²²	3	11
Allston's <i>Uriel</i> , 1908-1966 ²³	3	12
Allston's <i>Prometheus</i> , 1941 ²⁴	3	13
Caricatures, 1941-1948 ²⁵	4	1
<i>Six Heads</i> , ca. 1942 ²⁶	4	2

¹⁵ Includes photographs.

¹⁶ The oversize materials in box 18, folders 8-17 were found together in an oversize box and were arranged according to the established outline (*see* the Scope and Content Note).

¹⁷ Photographs removed to box 13, folders 1-44.

¹⁸ Photographs removed to box 13, folders 45-49.

¹⁹ Photograph removed to box 13, folder 50.

²⁰ Oversize item(s) removed to box 18, folder 3.

²¹ Photograph removed to box 13, folder 51. Oversize item(s) removed to box 18, folder 4.

²² Includes catalog (LONG 14497).

²³ Photograph removed to box 13, folder 52.

²⁴ Photographs removed to box 13, folders 53-54 and to box 16, folder 3.

²⁵ Photographs removed to box 13, folders 55-63.

²⁶ Photographs removed to box 13, folders 64-65.

	Box	Folder
Paintings, sketches, 1932-1964 ²⁷	4	3
Woman subjects, 1931-1950 ²⁸	4	4
Allston works in England, 1944-1948 ²⁹	4	5
Oversize broadside re: Royal West of England Academy, 1946	18	5
Dante, 1944 ³⁰	4	6
Miscellaneous, 1948-1949 [College Art Association] ³¹	4	7
Allston exhibition catalogs, 1839-1881 ³²	4	8
Literary subjects, 18th century, 1941-1949 ³³	4	9
Literary subjects, 19th century, 1947-1948	4	10
Miscellaneous pictures of Allston's paintings, n.d. ³⁴	4	11
Oversize picture of <i>St. Peter</i>	18	6
Catalog, 1934-1947	4	12
Milton subjects, n.d.	4	13
Unnamed men, 1924-1946 ³⁵	4	14
Portraits of men, 1922-1949 ³⁶	4	15
W. Allston letters, 1800	4	16
W. Allston letters, 1801	4	17
W. Allston letters, 1814	4	18
W. Allston letters, 1818	4	19
W. Allston letters, 1819	4	20
W. Allston letters, 1820s	4	21
W. Allston letters, 1832	4	22
W. Allston letters, 1836	4	23
W. Allston letters, 1837	4	24
W. Allston letters, 1839	4	25
W. Allston letters, 1842	5	1
Allston's Dreamy Women, 1831-1947 ³⁷	5	2
<i>The Paint King</i> , 1942-1946 ³⁸	5	3
Italian landscapes, 1943-1948 ³⁹	5	4
Swiss landscapes, n.d. ⁴⁰	5	5

²⁷ Photographs removed to box 13, folders 66-68.

²⁸ Photographs removed to box 13, folders 69-90.

²⁹ Oversize item(s) removed to box 18, folder 5.

³⁰ Photographs removed to box 13, folders 91-93.

³¹ Includes journal (LONG 14538).

³² Includes catalogs (LONG 14522-14523).

³³ Photographs removed to box 13, folders 94-102.

³⁴ Photographs removed to box 13, folders 103-108 and to box 14, folders 1-40. Oversize item(s) removed to box 18, folder 6.

³⁵ Photographs removed to box 14, folders 41-45.

³⁶ Photographs removed to box 14, folders 46-57.

³⁷ Photographs removed to box 14, folders 58-69.

³⁸ Photographs removed to box 14, folders 70-71.

³⁹ Photographs removed to box 14, folders 72-88.

⁴⁰ Photographs removed to box 14, folders 89-95.

	Box	Folder
Classical subjects: Greek, 1918-1948 ⁴¹	5	6
New Testament, 1891-1948 ⁴²	5	7
Unnamed women, 1948 ⁴³	5	8
Buck's Progress, 1948 ⁴⁴	5	9
Ships, 1944-1947 ⁴⁵	5	10
Old Testament, 1915-1949 ⁴⁶	5	11
Prints, 1944-1955 ⁴⁷	5	12
Letters and pictures, 1942-1949 ⁴⁸	5	13
Belshazzar's Feast, 1844-1949 ⁴⁹	5	14
Editorial re: Allston Poetry, 1840 ⁵⁰	5	14a
Proof Sheet -- outlines by Allston	18	15

Series III. Friends⁵¹

	Box	Folder
Tieck, Johann Ludwig, 1929 ⁵²	5	15
Coleridge, 1934-1950, Part 1 ⁵³	5	16
Oversize Washington Allston self-portrait, 1805	18	7
Coleridge, 1934-1950, Part 2 ⁵⁴	5	17
Friends, A, 1945-1947	6	1
Friends, B, 1906-1945	6	2
Friends, C, 1945-1949	6	3
Friends, D, 1843-1946 ⁵⁵	6	4
Friends, E-G, 1945-1946	6	5
Friends, Washington Irving (1785-1859), 1928-1947 ⁵⁶	6	6
Friends, J-L, 1946-1948	6	7
Friends, M, 1948 ⁵⁷	6	8

⁴¹ Photographs removed to box 14, folders 96-106.

⁴² Photographs removed to box 14, folders 107-109 and to box 15, folders 1-9.

⁴³ Photographs removed to box 15, folders 10-13.

⁴⁴ Photographs removed to box 15, folders 14-19.

⁴⁵ Photographs removed to box 15, folders 20-29.

⁴⁶ Photographs removed to box 15, folders 30-47.

⁴⁷ Photographs removed to box 15, folders 48-56.

⁴⁸ Photographs removed to box 15, folders 57-63.

⁴⁹ Photographs removed to box 15, folders 64-68.

⁵⁰ LONG 25612.

⁵¹ The oversize materials in box 18, folders 8-17 were found together in an oversize box and were arranged according to the established outline (*see* the Scope and Content Note).

⁵² Photograph removed to box 15, folders 96.

⁵³ Photographs removed to box 15, folders 69-72. Oversize item(s) removed to box 18, folder 7.

⁵⁴ Photographs removed to box 15, folders 73-76.

⁵⁵ Photographs removed to box 15, folders 77-80.

⁵⁶ Photographs removed to box 15, folders 81-84.

⁵⁷ Photograph removed to box 15, folder 85.

	Box	Folder
Friends, S.F.B. Morse, 1807-1949	6	9
Friends, R-S, 1923-1945 ⁵⁸	6	10
Friends, John Vanderlyn, 1945-1959	6	11
Friends, W, 1861-1947 ⁵⁹	6	12
Print -- Samuel Taylor Coleridge Table-Talking, n.d.	18	16
Photostats -- of portions of books inscribed to Washington Allston	18	17

Series IV. Trust

	Box	Folder
Purchasers, 1942-1944 ⁶⁰	6	13
M.F.A., Boston, 1939-1948	6	14
A (museums), 1942-1947	6	15
B (museums), 1942-1949 ⁶¹	6	16
C (museums), 1941-1948 ⁶²	6	17
C (museums), 1942-1949 ⁶³	7	1
D (museums), 1942-1946 ⁶⁴	7	2
E, F, and K (museums), 1941-1955	7	3
M (museums), 1941-1947	7	4
Museum of Modern Art, 1943-1946	7	5
N and O (museums), 1941-1946	7	6
O and P (museums), 1942-1946	7	7
R-Z (museums), 1942-1944	7	8
College Art Assn., et al, 1920-1948 ⁶⁵	7	9

Series V. Binders re: A) Biography, B) Works, and C) Friends

A. Biography

	Box	Folder
"Boyhood in South Carolina, 1779-1787"	8	1
"Allston in South Carolina"	8	2
"Allston in Newport"	8	3
"Allston at Harvard"	8	4
"Allston in Italy"	8	5

⁵⁸ Photographs removed to box 15, folders 86-89.

⁵⁹ Photographs removed to box 15, folders 90-95 and to box 16, folder 4.

⁶⁰ Includes address book (LONG 14537).

⁶¹ Photographs removed to box 15, folders 96.

⁶² Includes bulletin (LONG 14539) and book (LONG 14546).

⁶³ Includes catalogs (LONG 14547-14548).

⁶⁴ Includes book (LONG 14545).

⁶⁵ Photographs removed to box 15, folders 97-100.

	Box	Folder
"Allston in Boston, 1818-1830"	8	6
"Allston in Cambridgeport"	8	7
"Allston's Death -- 1843"	8	8
"Allston in Cambridgeport"	8	9
"Brookgreen"	8	10
"Allston I"	8	11
"Allston II," Part 1	9	1
"Allston II," Part 2	9	2
"Allston Letters I, 1779-1811, Youth," Part 1	9	3
"Allston Letters I, 1779-1811, Youth," Part 2	9	4
"Allston II, 1811-1818, England," Part 1	9	5
"Allston II, 1811-1818, England," Part 2	9	6
"Allston Letters III, 1818-1830, Boston," Part 1	9	7
"Allston Letters III, 1818-1830, Boston," Part 2	9	8
"Allston IV, 1830-1843, Cambridgeport," Part 1	9	9
"Allston IV, 1830-1843, Cambridgeport," Part 2	9	10
"Allston Notes," Part 1	10	1
"Allston Notes," Part 2	10	2

B. Works

	Box	Folder
"Allston Pictures, Bible & Classics," Part 1	10	3
"Allston Pictures, Bible & Classics," Part 2	10	4
"Allston Pictures, Literature"	10	5
"Allston Portraits," Part 1	10	6
"Allston Portraits," Part 2	10	7
"Allston Landscapes," Part 1	10	8
"Allston Landscapes," Part 2	11	1

C. Friends

	Box	Folder
Untitled	11	2
"Allston's Friends," Part 1	11	3
"Allston's Friends," Part 2	11	4

Series VI. Index Cards

Box 12

Series VII. Photographs and Negatives

	Box	Folder
Photograph ⁶⁶ -- artwork: portrait, Gov. Robert F.W. Allston	13	1
Photograph ⁶⁷ -- artwork: portrait, <i>Thomas Allston</i> of Prospect Hill	13	2
Photograph ⁶⁸ -- drawing room at Fairfield	13	3
Photograph ⁶⁹ -- artwork: portrait, <i>Mrs. William Allston, Esther LaBrosse de Marboeuf</i>	13	4
Photograph ⁷⁰ -- artwork: self-portrait, <i>Washington Allston</i> of Brookgreen	13	5
Photograph ⁷¹ -- artwork: portrait, <i>William Algernon Alston</i> of Rose Hill	13	6
Negative ⁷² -- artwork: portrait, <i>Thomas Allston</i> of Prospect Hill	13	7
Negative ⁷³ -- artwork: portrait, <i>Gov. Robert F.W. Allston</i>	13	8
Photograph ⁷⁴ -- Brookgreen Gardens, S.C.--the Boxwood Garden	13	9
Photograph ⁷⁵ -- Brookgreen Avenue looking west	13	10
Photograph ⁷⁶ -- Brookgreen Garden with sculptures	13	11
Photograph ⁷⁷ -- Brookgreen Avenue looking east	13	12
Photograph ⁷⁸ -- mansion of Dr. Benj. Waterhouse--Cambridge	13	13
Photograph ⁷⁹ -- artwork: portrait, <i>Robert Rogers</i> , Newport, RI, schoolmaster	13	14
Photograph ⁸⁰ -- Wilcox House, Newport, RI; detail of exterior sign	13	15
Photograph ⁸¹ -- Wilcox House, Newport, RI; exterior	13	16
Photograph ⁸² -- artwork: portrait, <i>Gilbert Stuart</i> , 1778	13	17

⁶⁶ Removed from box 1, folder 1.⁶⁷ Removed from box 1, folder 4.⁶⁸ Removed from box 1, folder 4.⁶⁹ Removed from box 1, folder 4.⁷⁰ Removed from box 1, folder 4.⁷¹ Removed from box 1, folder 4.⁷² Removed from box 1, folder 4.⁷³ Removed from box 1, folder 4.⁷⁴ Removed from box 1, folder 9.⁷⁵ Removed from box 1, folder 9.⁷⁶ Removed from box 1, folder 9.⁷⁷ Removed from box 1, folder 9.⁷⁸ Removed from box 2, folder 3.⁷⁹ Removed from box 2, folder 4.⁸⁰ Removed from box 2, folder 4.⁸¹ Removed from box 2, folder 4.⁸² Removed from box 2, folder 4.

	Box	Folder
Photograph ⁸³ -- marble table designed by Washington Allston for Mrs. George Gibbs	13	18
Photograph ⁸⁴ -- memorial to Mr. and Mrs. George Gibbs in St. Mary's Church, Portsmouth, RI	13	19
Photograph ⁸⁵ -- artwork: portrait, <i>Washington Allston</i>	13	20
Photograph ⁸⁶ -- artwork: self-portrait, <i>Washington Allston</i>	13	21
Photograph ⁸⁷ -- artwork: self-portrait, <i>Washington Allston</i>	13	22
Photograph ⁸⁸ -- artwork: portrait, <i>Washington Allston</i> by Gilbert Stuart	13	23
Photograph ⁸⁹ -- artwork: portrait, <i>Washington Allston</i>	13	24
Photograph ⁹⁰ -- artwork: <i>Gilbert Stuart</i> and his family	13	25
Photograph ⁹¹ -- artwork: portrait, <i>Washington Allston</i> by Edward Greene Malbone, ca. 1798	13	26
Photograph ⁹² -- bust of Washington Allston at the Carolina Art Association by Edward Augustus Brackett, ca. 1843-1844	13	27
Photograph ⁹³ -- artwork: portrait, <i>Washington Allston</i> , by Richard Staigg, ca. 1840	13	28
Photograph ⁹⁴ -- artwork: portrait, <i>Washington Allston</i> , by Benjamin Trott	13	29
Photograph ⁹⁵ -- artwork--self-portrait, <i>Washington Allston</i>	13	30
Photograph ⁹⁶ -- artwork: portrait, <i>Washington Allston</i> as a young man	13	31
Photograph ⁹⁷ -- artwork: <i>Gilbert Stuart</i> and his family	13	32
Photograph ⁹⁸ -- artwork: portrait, <i>Washington Allston</i> by Joseph Alexander Ames	13	33
Photograph ⁹⁹ -- artwork: portrait, <i>Washington Allston</i> by Chester Harding	13	34

⁸³ Removed from box 2, folder 4.

⁸⁴ Removed from box 2, folder 4.

⁸⁵ Removed from box 2, folder 5.

⁸⁶ Removed from box 2, folder 5.

⁸⁷ Removed from box 2, folder 5.

⁸⁸ Removed from box 2, folder 5.

⁸⁹ Removed from box 2, folder 5.

⁹⁰ Removed from box 2, folder 5.

⁹¹ Removed from box 2, folder 5.

⁹² Removed from box 2, folder 5.

⁹³ Removed from box 2, folder 5.

⁹⁴ Removed from box 2, folder 5.

⁹⁵ Removed from box 2, folder 5.

⁹⁶ Removed from box 2, folder 5.

⁹⁷ Removed from box 2, folder 5.

⁹⁸ Removed from box 2, folder 5.

⁹⁹ Removed from box 2, folder 5.

	Box	Folder
Photograph ¹⁰⁰ -- artwork: portrait, <i>Washington Allston</i> by Chester Harding	13	35
Photograph ¹⁰¹ -- artwork: portrait, <i>Washington Allston</i>	13	36
Photograph ¹⁰² -- artwork: portrait, <i>Washington Allston</i> by Richard Staigg, ca. 1840	13	37
Photograph ¹⁰³ -- artwork: portrait, <i>Washington Allston</i> by Richard Staigg, ca. 1840	13	38
Photograph ¹⁰⁴ -- artwork: portrait, <i>Washington Allston</i>	13	39
Photograph ¹⁰⁵ -- artwork: seascape, ca. 1814	13	40
Photograph ¹⁰⁶ -- artwork: pencil sketch of Camp of the Adirondac [sic] Club, Follansbee Lake, 1857, by William J. Stillman	13	41
Negative ¹⁰⁷ -- artwork: pencil sketch of Camp of the Adirondac [sic] Club, Follansbee Lake, 1857 by William J. Stillman	13	42
Photograph ¹⁰⁸ -- artwork: pencil sketch of Camp of the Adirondac [sic] Club, Follansbee Lake, 1857 by William J. Stillman	13	43
Negative ¹⁰⁹ -- artwork: pencil sketch of Camp of the Adirondac [sic] Club, Follansbee Lake, 1857 by William J. Stillman	13	44
Negative ¹¹⁰ -- artwork ; portrait, <i>Esther La Brosse de Marboeuf, Mrs. William Allston</i>	13	45
Negative ¹¹¹ -- drawing room at Fairfield	13	46
Negative ¹¹² -- artwork: <i>William Alston</i> of Clifton	13	47
Photograph ¹¹³ -- artwork: <i>William Alston</i> of Clifton	13	48
Photograph ¹¹⁴ -- handwritten notes [possibly those of Coleridge]	13	49
Photograph ¹¹⁵ -- artwork: <i>The Angel Uriel</i> , detail from <i>Uriel in the Sun</i> by Washington Allston, 1817	13	50
Photograph ¹¹⁶ -- Allston's Studio, Cambridgeport, at corner of Magazine and Auburn Streets	13	51

¹⁰⁰ Removed from box 2, folder 5.

¹⁰¹ Removed from box 2, folder 5.

¹⁰² Removed from box 2, folder 5.

¹⁰³ Removed from box 2, folder 5.

¹⁰⁴ Removed from box 2, folder 5.

¹⁰⁵ Removed from box 2, folder 7.

¹⁰⁶ Removed from box 2, folder 9.

¹⁰⁷ Removed from box 2, folder 9.

¹⁰⁸ Removed from box 2, folder 9.

¹⁰⁹ Removed from box 2, folder 9.

¹¹⁰ Removed from box 2, folder 10.

¹¹¹ Removed from box 2, folder 10.

¹¹² Removed from box 2, folder 10.

¹¹³ Removed from box 2, folder 10.

¹¹⁴ Removed from box 2, folder 10.

¹¹⁵ Removed from box 2, folder 11.

¹¹⁶ Removed from box 3, folder 10.

	Box	Folder
Photograph ¹¹⁷ -- artwork: <i>The Angel Uriel</i> , detail from <i>Uriel in the Sun</i> by Washington Allston, 1817	13	52
Photograph ¹¹⁸ -- artwork: <i>Prometheus</i> by Washington Allston	13	53
Photograph ¹¹⁹ -- artwork: <i>Prometheus</i> by Washington Allston	13	54
Photograph ¹²⁰ -- artwork: urban street scene [possibly from <i>The Buck's Progress</i>]	13	55
Photograph ¹²¹ -- artwork: caricature, <i>Joseph Willard</i> (president of Harvard College) by Washington Allston, 1798	13	56
Photograph ¹²² -- artwork: scene in an Eating-House [H.W.L. Dana annotation]	13	57
Photograph ¹²³ -- the back of <i>The Tippler</i>	13	58
Photograph ¹²⁴ -- artwork: scene in an Eating-House [H.W.L. Dana annotation]	13	59
Photograph ¹²⁵ -- artwork: rich bookseller [H.W.L. Dana annotation]	13	60
Photograph ¹²⁶ -- artwork: poor author and rich bookseller [H.W.L. Dana annotation]	13	61
Photograph ¹²⁷ -- the back of <i>The Tippler</i>	13	62
Photograph ¹²⁸ -- the back of <i>The Tippler</i>	13	63
Photograph ¹²⁹ -- artwork: studies of figures and draperies for <i>The Angel Releasing St. Peter</i>	13	64
Photograph ¹³⁰ -- artwork: sketches	13	65
Photograph ¹³¹ -- artwork: <i>Saul and the Witch of Endor</i> by Washington Allston, ca. 1820	13	66
Photograph ¹³² -- artwork: <i>A Schepen Doing Duty to a Burgomaster's Joke</i> , 1818	13	67
Photograph ¹³³ -- artwork: <i>Prometheus</i> by Washington Allston	13	68
Photograph ¹³⁴ -- artwork: study for <i>Mother and Child</i> [H.W.L. Dana notation]	13	69

¹¹⁷ Removed from box 3, folder 12.

¹¹⁸ Removed from box 3, folder 13.

¹¹⁹ Removed from box 3, folder 13.

¹²⁰ Removed from box 4, folder 1.

¹²¹ Removed from box 4, folder 1.

¹²² Removed from box 4, folder 1.

¹²³ Removed from box 4, folder 1.

¹²⁴ Removed from box 4, folder 1.

¹²⁵ Removed from box 4, folder 1.

¹²⁶ Removed from box 4, folder 1.

¹²⁷ Removed from box 4, folder 1.

¹²⁸ Removed from box 4, folder 1.

¹²⁹ Removed from box 4, folder 2.

¹³⁰ Removed from box 4, folder 2.

¹³¹ Removed from box 4, folder 3.

¹³² Removed from box 4, folder 3.

¹³³ Removed from box 4, folder 3.

	Box	Folder
Photograph ¹³⁵ -- artwork: <i>Eastern Temple Figure, Standing</i> by Washington Allston	13	70
Photograph ¹³⁶ -- artwork: <i>Mother and Child</i> by Washington Allston	13	71
Photograph ¹³⁷ -- artwork: <i>Infant and Parents</i> by Washington Allston	13	72
Photograph ¹³⁸ -- artwork: <i>Portrait of a Woman</i> by Washington Allston	13	73
Photograph ¹³⁹ -- artwork: <i>Unfinished Female Head</i> by Washington Allston	13	74
Photograph ¹⁴⁰ -- artwork: <i>Beatrice</i> by Washington Allston, 1819	13	75
Photograph ¹⁴¹ -- artwork: <i>Dido and Anna</i> by Washington Allston	13	76
Photograph ¹⁴² -- artwork: <i>The Evening Hymn</i> by Washington Allston, 1835	13	77
Photograph ¹⁴³ -- artwork: <i>The Sisters</i> by Washington Allston, 1817	13	78
Photograph ¹⁴⁴ -- artwork: <i>The Sisters</i> by Washington Allston, 1817	13	79
Photograph ¹⁴⁵ -- artwork: <i>Mother Watching Her Child</i> by Washington Allston, 1814	13	80
Photograph ¹⁴⁶ -- artwork: <i>Miriam the Prophetess</i> by Washington Allston	13	81
Photograph ¹⁴⁷ -- artwork: <i>Female Figure Seated on a Bank</i> by Washington Allston	13	82
Photograph ¹⁴⁸ -- artwork: <i>Una (A Sketch)</i> by Washington Allston	13	83
Photograph ¹⁴⁹ -- artwork: <i>Lady Seated on a Bank</i> by Washington Allston	13	84
Photograph ¹⁵⁰ -- artwork: <i>The Tuscan Maid</i> by Washington Allston, 1831	13	85
Photograph ¹⁵¹ -- artwork: <i>Una Sleeping in a Wood</i> by Washington Allston	13	86

¹³⁴ Removed from box 4, folder 4.

¹³⁵ Removed from box 4, folder 4.

¹³⁶ Removed from box 4, folder 4.

¹³⁷ Removed from box 4, folder 4.

¹³⁸ Removed from box 4, folder 4.

¹³⁹ Removed from box 4, folder 4.

¹⁴⁰ Removed from box 4, folder 4.

¹⁴¹ Removed from box 4, folder 4.

¹⁴² Removed from box 4, folder 4.

¹⁴³ Removed from box 4, folder 4.

¹⁴⁴ Removed from box 4, folder 4.

¹⁴⁵ Removed from box 4, folder 4.

¹⁴⁶ Removed from box 4, folder 4.

¹⁴⁷ Removed from box 4, folder 4.

¹⁴⁸ Removed from box 4, folder 4.

¹⁴⁹ Removed from box 4, folder 4.

¹⁵⁰ Removed from box 4, folder 4.

¹⁵¹ Removed from box 4, folder 4.

	Box	Folder
Photograph ¹⁵² -- artwork: <i>A Sibyl</i> by Washington Allston	13	87
Photograph ¹⁵³ -- artwork: <i>A Sibyl</i> by Washington Allston	13	88
Photograph ¹⁵⁴ -- artwork: female figure [H.W.L. Dana notation]	13	89
Photograph ¹⁵⁵ -- artwork: <i>Florimel</i> by Washington Allston	13	90
Photograph ¹⁵⁶ -- artwork: <i>Beatrice</i> by Washington Allston, 1819	13	91
Photograph ¹⁵⁷ -- artwork: [<i>Dante's Inferno?</i>] by Thomas Cole	13	92
Photograph ¹⁵⁸ -- artwork: [<i>Dante's Inferno?</i>] by Thomas Cole	13	93
Photograph ¹⁵⁹ -- artwork: <i>Spalatro's Vision of the Bloody Hand</i> by Washington Allston, 1831	13	94
Photograph ¹⁶⁰ -- artwork: <i>Danger</i> by Washington Allston, ca. 1811-1818	13	95
Photograph ¹⁶¹ -- artwork: <i>Robbers Fighting With Each Other for the Spoils Over a Murdered Traveller</i> by Washington Allston, 1801	13	96
Photograph ¹⁶² -- artwork: <i>Dido and Anna</i> by Washington Allston	13	97
Photograph ¹⁶³ -- artwork: <i>Donna Mencia in the Robbers Cave</i> by Washington Allston, 1815	13	98
Photograph ¹⁶⁴ -- artwork: portrait, <i>Amy Robsart</i> by Washington Allston, 1840	13	99
Photograph ¹⁶⁵ -- artwork: <i>Elijah Fed by the Ravens</i> by Washington Allston	13	100
Photograph ¹⁶⁶ -- artwork: <i>Donna Mencia in the Robbers Cave</i> by Washington Allston, 1815	13	101
Photograph ¹⁶⁷ -- artwork: group portrait of unidentified men, standing, referring to a document	13	102
Photograph ¹⁶⁸ -- artwork: <i>Landscape</i> by Washington Allston	13	103
Photograph ¹⁶⁹ -- artwork: <i>Lorenzo and Jessica or Romeo and Juliet</i> by Washington Allston [shows a man playing a lute to a seated woman]	13	104

¹⁵² Removed from box 4, folder 4.

¹⁵³ Removed from box 4, folder 4.

¹⁵⁴ Removed from box 4, folder 4.

¹⁵⁵ Removed from box 4, folder 4.

¹⁵⁶ Removed from box 4, folder 6.

¹⁵⁷ Removed from box 4, folder 6.

¹⁵⁸ Removed from box 4, folder 6.

¹⁵⁹ Removed from box 4, folder 9.

¹⁶⁰ Removed from box 4, folder 9.

¹⁶¹ Removed from box 4, folder 9.

¹⁶² Removed from box 4, folder 9.

¹⁶³ Removed from box 4, folder 9.

¹⁶⁴ Removed from box 4, folder 9.

¹⁶⁵ Removed from box 4, folder 9.

¹⁶⁶ Removed from box 4, folder 9.

¹⁶⁷ Removed from box 4, folder 9.

¹⁶⁸ Removed from box 4, folder 11.

	Box	Folder
Photograph ¹⁷⁰ -- artwork: a seated woman; framed painting placed in front of a stone wall [tags with the numbers "5" and "3" are visible above the painting]	13	105
Photograph ¹⁷¹ -- artwork: <i>Italian Shepherd Boy</i> by Washington Allston, 1819	13	106
Photograph ¹⁷² -- artwork: <i>Italian Shepherd Boy</i> by Washington Allston, 1819	13	107
Photograph ¹⁷³ -- artwork: portrait, <i>The Artist's Mother, Rachel Moore Allston Flagg</i> by Washington Allston, 1809	13	108
Photograph ¹⁷⁴ -- artwork: portrait, <i>Mrs. Timothy Waterhouse</i> , ca. 1796-1797	14	1
Photograph ¹⁷⁵ -- artwork: portrait, <i>Ann Channing Allston</i> , ca. 1809-1811	14	2
Photograph ¹⁷⁶ -- artwork: portrait, <i>Mrs. Sarah Kemble Siddons</i>	14	3
Photograph ¹⁷⁷ -- artwork: portrait of a young man by Washington Allston	14	4
Photograph ¹⁷⁸ -- artwork: portrait, <i>James K. Bogert, Jr.</i>	14	5
Photograph ¹⁷⁹ -- artwork: portrait, <i>Francis Dana Channing</i> by Washington Allston, ca. 1810	14	6
Photograph ¹⁸⁰ -- artwork: portrait, <i>Francis Dana Channing</i> by Washington Allston, ca. 1810	14	7
Photograph ¹⁸¹ -- artwork: portrait, <i>Benjamin West</i> by Washington Allston, 1814	14	8
Photograph ¹⁸² -- artwork: portrait, <i>Samuel Williams</i> by Washington Allston, 1812	14	9
Photograph ¹⁸³ -- artwork: portrait, <i>Benjamin West</i> by Washington Allston, 1814	14	10
Photograph ¹⁸⁴ -- artwork: <i>The Student</i>	14	11

¹⁶⁹ Removed from box 4, folder 11.

¹⁷⁰ Removed from box 4, folder 11.

¹⁷¹ Removed from box 4, folder 11.

¹⁷² Removed from box 4, folder 11.

¹⁷³ Removed from box 4, folder 11.

¹⁷⁴ Removed from box 4, folder 11.

¹⁷⁵ Removed from box 4, folder 11.

¹⁷⁶ Removed from box 4, folder 11.

¹⁷⁷ Removed from box 4, folder 11.

¹⁷⁸ Removed from box 4, folder 11.

¹⁷⁹ Removed from box 4, folder 11.

¹⁸⁰ Removed from box 4, folder 11.

¹⁸¹ Removed from box 4, folder 11.

¹⁸² Removed from box 4, folder 11.

¹⁸³ Removed from box 4, folder 11.

¹⁸⁴ Removed from box 4, folder 11.

	Box	Folder
Photograph ¹⁸⁵ -- artwork: portrait, <i>Rev. William Ellery Channing</i> by Washington Allston [two copies of the same portrait on one photograph]	14	12
Photograph ¹⁸⁶ -- artwork: portrait, <i>General William Heath</i>	14	13
Photograph ¹⁸⁷ -- artwork: self-portrait, <i>Washington Allston</i> , ca. 1798	14	14
Photograph ¹⁸⁸ -- artwork: self-portrait, <i>Washington Allston</i> , ca. 1805	14	15
Photograph ¹⁸⁹ -- artwork: portrait, <i>John Harris</i>	14	16
Photograph ¹⁹⁰ -- artwork: portrait, <i>Washington Irving</i> by Washington Allston	14	17
Photograph ¹⁹¹ -- artwork: portrait, <i>Andrew Jackson</i> by Washington Allston	14	18
Photograph ¹⁹² -- artwork: portrait, <i>Robert Rogers</i> [Newport, RI, schoolmaster] by Washington Allston, ca. 1800	14	19
Photograph ¹⁹³ -- artwork: portrait, <i>Edwin Plummer</i> by Washington Allston, ca. 1820	14	20
Photograph ¹⁹⁴ -- artwork: portrait, <i>Bushrod Washington</i> by Washington Allston	14	21
Photograph ¹⁹⁵ -- artwork: <i>Gil Blas Securing the Cook in the Robbers Cave</i> by John Opie	14	22
Photograph ¹⁹⁶ -- artwork: frightened people with demons and fleeing angels [possibly based on Dante's <i>Inferno</i>]	14	23
Photograph ¹⁹⁷ -- artwork: <i>A Scene in an Eating House</i> , ca. 1813	14	24
Photograph ¹⁹⁸ -- artwork: <i>Donna Mencía in the Robbers Cave</i> by Washington Allston, 1815	14	25
Photograph ¹⁹⁹ -- artwork: <i>Jeremiah Dictating His Prophecy of the Destruction of Jerusalem to Baruch the Scribe</i> by Washington Allston, 1820	14	26

¹⁸⁵ Removed from box 4, folder 11.

¹⁸⁶ Removed from box 4, folder 11.

¹⁸⁷ Removed from box 4, folder 11.

¹⁸⁸ Removed from box 4, folder 11.

¹⁸⁹ Removed from box 4, folder 11.

¹⁹⁰ Removed from box 4, folder 11.

¹⁹¹ Removed from box 4, folder 11.

¹⁹² Removed from box 4, folder 11.

¹⁹³ Removed from box 4, folder 11.

¹⁹⁴ Removed from box 4, folder 11.

¹⁹⁵ Removed from box 4, folder 11.

¹⁹⁶ Removed from box 4, folder 11.

¹⁹⁷ Removed from box 4, folder 11.

¹⁹⁸ Removed from box 4, folder 11.

¹⁹⁹ Removed from box 4, folder 11.

	Box	Folder
Photograph ²⁰⁰ -- artwork: <i>Study of the Head of Jeremiah</i> by Washington Allston, 1819	14	27
Photograph ²⁰¹ -- artwork: <i>Angel Appearing to St. Peter in Prison</i> [study]	14	28
Photograph ²⁰² -- artwork: <i>Angel Delivering St. Peter from Prison</i> by Washington Allston	14	29
Photograph ²⁰³ -- artwork: <i>Tragic Figure in Chains</i> [study]	14	30
Photograph ²⁰⁴ -- artwork: study of head with two inscriptions by Washington Allston: Presented by Mrs Chas Bradley/To The Rhode Island/School of Design/Dec 1899." and "W.Allston-pinxt"	14	31
Photograph ²⁰⁵ -- artwork: <i>Study for Jason</i> by Washington Allston	14	32
Photograph ²⁰⁶ -- artwork: <i>Ideal Head (Head of the Angel)</i> , ca. 1813-1815	14	33
Photograph ²⁰⁷ -- artwork: <i>Study for Twelfth Night</i>	14	34
Photograph ²⁰⁸ -- artwork: <i>Jason</i> by Washington Allston	14	35
Photograph ²⁰⁹ -- artwork: <i>Lorenzo and Jessica</i> by Washington Allston, 1832	14	36
Photograph ²¹⁰ -- artwork: <i>Macbeth</i> by Washington Allston	14	37
Photograph ²¹¹ -- artwork: <i>Michael Setting the Watch (Or Gabriel Setting the Watch)</i> by Washington Allston	14	38
Photograph ²¹² -- artwork: <i>Opening of the Casket</i> by Washington Allston, 1807	14	39
Photograph ²¹³ -- artwork: <i>Quarrel of Achilles with Agememnon</i> by Washington Allston	14	40
Photograph ²¹⁴ -- artwork: <i>Portrait of a Man</i> by Washington Allston	14	41
Photograph ²¹⁵ -- artwork: <i>Man in a Green Coat</i>	14	42
Photograph ²¹⁶ -- artwork: <i>Man in a Green Coat</i>	14	43
Photograph ²¹⁷ -- artwork: <i>The Student</i> by Washington Allston	14	44

²⁰⁰ Removed from box 4, folder 11.

²⁰¹ Removed from box 4, folder 11.

²⁰² Removed from box 4, folder 11.

²⁰³ Removed from box 4, folder 11.

²⁰⁴ Removed from box 4, folder 11.

²⁰⁵ Removed from box 4, folder 11.

²⁰⁶ Removed from box 4, folder 11.

²⁰⁷ Removed from box 4, folder 11.

²⁰⁸ Removed from box 4, folder 11.

²⁰⁹ Removed from box 4, folder 11.

²¹⁰ Removed from box 4, folder 11.

²¹¹ Removed from box 4, folder 11.

²¹² Removed from box 4, folder 11.

²¹³ Removed from box 4, folder 11.

²¹⁴ Removed from box 4, folder 14.

²¹⁵ Removed from box 4, folder 14.

²¹⁶ Removed from box 4, folder 14.

	Box	Folder
Photograph ²¹⁸ -- artwork: <i>Studies of Figures and Drapery for The Angel Releasing St. Peter</i> by Washington Allston, ca. 1813-1815	14	45
Photograph ²¹⁹ -- artwork: portrait, <i>Samuel Hammond</i> by Washington Allston	14	46
Photograph ²²⁰ -- artwork: portrait, <i>General William Heath</i> by Washington Allston	14	47
Photograph ²²¹ -- artwork: portrait, <i>Rev. William Ellery Channing</i> by Washington Allston	14	48
Photograph ²²² -- artwork: portrait, <i>Rev. William Ellery Channing</i> by Washington Allston	14	49
Photograph ²²³ -- artwork: portrait, <i>Captain Pray</i>	14	50
Photograph ²²⁴ -- artwork: portrait, <i>Andrew Jackson</i> by Washington Allston	14	51
Photograph ²²⁵ -- artwork: portrait, <i>Benjamin West</i> by Washington Allston	14	52
Photograph ²²⁶ -- artwork: portrait, <i>Samuel Williams</i> by Washington Allston, 1812	14	53
Photograph ²²⁷ -- artwork: portrait, <i>Benjamin West</i> by Washington Allston	14	54
Photograph ²²⁸ -- artwork: portrait, <i>Benjamin West</i> by Washington Allston	14	55
Photograph ²²⁹ -- artwork: portrait, <i>John Hancock</i>	14	56
Photograph ²³⁰ -- artwork: portrait, <i>Samuel Hammond</i>	14	57
Photograph ²³¹ -- artwork: <i>Italian Shepherd Boy</i> by Washington Allston, 1819	14	58
Photograph ²³² -- artwork: <i>A Spanish Girl</i> by Washington Allston, 1831	14	59
Photograph ²³³ -- artwork: <i>The Tuscan Maid</i> by Washington Allston, 1831	14	60

²¹⁷ Removed from box 4, folder 14.

²¹⁸ Removed from box 4, folder 14.

²¹⁹ Removed from box 4, folder 15.

²²⁰ Removed from box 4, folder 15.

²²¹ Removed from box 4, folder 15.

²²² Removed from box 4, folder 15.

²²³ Removed from box 4, folder 15.

²²⁴ Removed from box 4, folder 15.

²²⁵ Removed from box 4, folder 15.

²²⁶ Removed from box 4, folder 15.

²²⁷ Removed from box 4, folder 15.

²²⁸ Removed from box 4, folder 15.

²²⁹ Removed from box 4, folder 15.

²³⁰ Removed from box 4, folder 15.

²³¹ Removed from box 5, folder 2.

²³² Removed from box 5, folder 2.

	Box	Folder
Photograph ²³⁴ -- artwork: <i>A Troubadour</i> by Washington Allston	14	61
Photograph ²³⁵ -- artwork: portrait of an unidentified boy, seated; framed painting placed in front of bookshelves	14	62
Photograph ²³⁶ -- artwork: portrait of an unidentified boy, seated; framed painting placed in front of bookshelves	14	63
Photograph ²³⁷ -- artwork: <i>Italian Shepherd Boy</i> by Washington Allston, 1819	14	64
Photograph ²³⁸ -- artwork: <i>Italian Shepherd Boy</i> by Washington Allston, 1819	14	65
Photograph ²³⁹ -- artwork: <i>Italian Shepherd Boy</i> by Washington Allston, 1819	14	66
Photograph ²⁴⁰ -- artwork: <i>The Evening Hymn</i> by Washington Allston, 1835	14	67
Photograph ²⁴¹ -- artwork: <i>The Evening Hymn</i> by Washington Allston, 1835	14	68
Photograph ²⁴² -- artwork: <i>The Evening Hymn</i> by Washington Allston, 1835	14	69
Photograph ²⁴³ -- artwork: <i>The Paint King of Washington Alston Illustrated</i>	14	70
Negative ²⁴⁴ -- artwork: <i>The Paint King of Washington Alston Illustrated</i>	14	71
Photograph ²⁴⁵ -- artwork: <i>Italian Landscape</i> by Washington Allston, ca. 1830	14	72
Photograph ²⁴⁶ -- artwork: <i>Italian Landscape</i> by Washington Allston, ca. 1830	14	73
Photograph ²⁴⁷ -- artwork: <i>Italian Landscape</i> by Washington Allston, ca. 1830	14	74
Photograph ²⁴⁸ -- artwork: <i>Italian Landscape</i> by Washington Allston, 1814	14	75

²³³ Removed from box 5, folder 2.

²³⁴ Removed from box 5, folder 2.

²³⁵ Removed from box 5, folder 2.

²³⁶ Removed from box 5, folder 2.

²³⁷ Removed from box 5, folder 2.

²³⁸ Removed from box 5, folder 2.

²³⁹ Removed from box 5, folder 2.

²⁴⁰ Removed from box 5, folder 2.

²⁴¹ Removed from box 5, folder 2.

²⁴² Removed from box 5, folder 2.

²⁴³ Removed from box 5, folder 3.

²⁴⁴ Removed from box 5, folder 3.

²⁴⁵ Removed from box 5, folder 4.

²⁴⁶ Removed from box 5, folder 4.

²⁴⁷ Removed from box 5, folder 4.

²⁴⁸ Removed from box 5, folder 4.

	Box	Folder
Photograph ²⁴⁹ -- artwork: Italian Landscape by Washington Allston, 1814	14	76
Photograph ²⁵⁰ -- artwork: Italian Landscape by Washington Allston, 1814	14	77
Photograph ²⁵¹ -- artwork: Italian Landscape, Sunset by Washington Allston, 1821	14	78
Photograph ²⁵² -- artwork: Moonlit Landscape with Horseman by Washington Allston	14	79
Photograph ²⁵³ -- artwork: Moonlit Landscape with Horseman by Washington Allston	14	80
Photograph ²⁵⁴ -- artwork: Landscape by Washington Allston, 1798	14	81
Photograph ²⁵⁵ -- artwork: Italian Landscape by Washington Allston, ca. 1805-1810	14	82
Photograph ²⁵⁶ -- artwork: Landscape by Washington Allston, 1804	14	83
Photograph ²⁵⁷ -- artwork: group portrait at evening campfire by Washington Allston, 1805	14	84
Photograph ²⁵⁸ -- artwork: Robbers Fighting With Each Other for the Spoils Over a Murdered Traveller by Washington Allston, 1801	14	85
Photograph ²⁵⁹ -- artwork: [Italian Landscape by Washington Allston?]	14	86
Photograph ²⁶⁰ -- artwork: Italian Landscape by Washington Allston	14	87
Photograph ²⁶¹ -- rear mounting of canvas painting with two labels: "Landscape painted/by Washington Allston/for W. Dutton" and "MUSEUM OF FINE ARTS/Artist, Washington Allston/Subject, Landscape/Owner, Geo. M. Barnard/Date of Loan, July '81"	14	88
Photograph ²⁶² -- artwork: The Trout Stream by Washington Allston, 1817	14	89
Photograph ²⁶³ -- artwork: Landscape by Washington Allston, 1804	14	90
Photograph ²⁶⁴ -- artwork: <i>Landscape</i> by Washington Allston, 1804	14	91

²⁴⁹ Removed from box 5, folder 4.

²⁵⁰ Removed from box 5, folder 4.

²⁵¹ Removed from box 5, folder 4.

²⁵² Removed from box 5, folder 4.

²⁵³ Removed from box 5, folder 4.

²⁵⁴ Removed from box 5, folder 4.

²⁵⁵ Removed from box 5, folder 4.

²⁵⁶ Removed from box 5, folder 4.

²⁵⁷ Removed from box 5, folder 4.

²⁵⁸ Removed from box 5, folder 4.

²⁵⁹ Removed from box 5, folder 4.

²⁶⁰ Removed from box 5, folder 4.

²⁶¹ Removed from box 5, folder 4.

²⁶² Removed from box 5, folder 5.

²⁶³ Removed from box 5, folder 5.

²⁶⁴ Removed from box 5, folder 5.

	Box	Folder
Photograph ²⁶⁵ -- artwork: <i>Landscape</i> by Washington Allston, ca. 1802	14	92
Photograph ²⁶⁶ -- artwork: <i>Landscape</i> by Washington Allston, ca. 1802	14	93
Photograph ²⁶⁷ -- artwork: <i>Landscape of Trees and Ruins</i> by Washington Allston	14	94
Photograph ²⁶⁸ -- artwork: <i>Diana and her Nymphs in the Chase</i> , 1805	14	95
Photograph ²⁶⁹ -- artwork: <i>Cupid</i> , 1804; framed painting placed in front of bookshelves	14	96
Photograph ²⁷⁰ -- artwork: <i>Cupid</i> , 1804; framed painting placed in front of bookshelves	14	97
Photograph ²⁷¹ -- artwork: <i>Helidorus in the Temple</i>	14	98
Photograph ²⁷² -- artwork: <i>Portrait of Dr. Waterhouse's Mother</i> by Washington Allston	14	99
Photograph ²⁷³ -- artwork: <i>A Lady Reading</i> by Washington Allston [subject is Anne Channing Allston, the artist's wife]	14	100
Photograph ²⁷⁴ -- artwork: portrait, <i>Mrs. Sarah Kemble Siddons</i>	14	101
Photograph ²⁷⁵ -- artwork: <i>The Valentine</i> by Washington Allston, 1810	14	102
Photograph ²⁷⁶ -- artwork: portrait, <i>Mrs. Channing</i>	14	103
Photograph ²⁷⁷ -- artwork: portrait, <i>The Artist's Mother, Rachel Moore Allston Flagg</i> by Washington Allston, 1809	14	104
Photograph ²⁷⁸ -- artwork: portrait, <i>Elizabeth Davis Locke Harrington</i>	14	105
Photograph ²⁷⁹ -- artwork: portrait, <i>Sarah Harvey Trumbull</i> by Samuel Waldo	14	106
Photograph ²⁸⁰ -- artwork: <i>Head of a Woman</i> by Washington Allston	14	107
Photograph ²⁸¹ -- artwork: <i>Original Sketch on Two Sides</i> by Washington Allston	14	108

²⁶⁵ Removed from box 5, folder 5.

²⁶⁶ Removed from box 5, folder 5.

²⁶⁷ Removed from box 5, folder 5.

²⁶⁸ Removed from box 5, folder 5.

²⁶⁹ Removed from box 5, folder 6.

²⁷⁰ Removed from box 5, folder 6.

²⁷¹ Removed from box 5, folder 6.

²⁷² Removed from box 5, folder 6.

²⁷³ Removed from box 5, folder 6.

²⁷⁴ Removed from box 5, folder 6.

²⁷⁵ Removed from box 5, folder 6.

²⁷⁶ Removed from box 5, folder 6.

²⁷⁷ Removed from box 5, folder 6.

²⁷⁸ Removed from box 5, folder 6.

²⁷⁹ Removed from box 5, folder 6.

²⁸⁰ Removed from box 5, folder 7.

	Box	Folder
Photograph ²⁸² -- artwork: <i>Original Sketch on Two Sides</i> by Washington Allston	14	109
Photograph ²⁸³ -- artwork: <i>Angel of Wrath Over Jerusalem</i> by Washington Allston	15	1
Photograph ²⁸⁴ -- artwork: <i>Christ Healing the Sick</i>	15	2
Photograph ²⁸⁵ -- artwork: <i>St. John the Evangelist</i> by Washington Allston	15	3
Photograph ²⁸⁶ -- artwork: <i>Head of St. Peter</i> by Washington Allston	15	4
Photograph ²⁸⁷ -- artwork: <i>Angel Appearing to St. Peter in Prison</i> by Washington Allston	15	5
Photograph ²⁸⁸ -- artwork: <i>Man in Chains</i> by Washington Allston	15	6
Photograph ²⁸⁹ -- artwork: sketches	15	7
Photograph ²⁹⁰ -- artwork: <i>Tragic Figure with Chains</i> by Washington Allston	15	8
Photograph ²⁹¹ -- artwork: <i>Christ Healing the Sick</i>	15	9
Photograph ²⁹² -- artwork: <i>Mother Watching Her Child</i> by Washington Allston, 1814	15	10
Photograph ²⁹³ -- artwork: <i>Small Oval Sketch of a Female Head</i> by Washington Allston	15	11
Photograph ²⁹⁴ -- artwork: <i>Portrait of a Young Girl, Seated</i> --False Washington Allston signature	15	12
Photograph ²⁹⁵ -- artwork: <i>Portrait of a Young Girl, Seated</i> [false Washington Allston signature]	15	13
Photograph ²⁹⁶ -- artwork: <i>The Buck's Progress Number I</i> by Washington Allston	15	14
Photograph ²⁹⁷ -- artwork: <i>The Buck's Progress Number I</i> by Washington Allston	15	15

²⁸¹ Removed from box 5, folder 7.

²⁸² Removed from box 5, folder 7.

²⁸³ Removed from box 5, folder 7.

²⁸⁴ Removed from box 5, folder 7.

²⁸⁵ Removed from box 5, folder 7.

²⁸⁶ Removed from box 5, folder 7.

²⁸⁷ Removed from box 5, folder 7.

²⁸⁸ Removed from box 5, folder 7.

²⁸⁹ Removed from box 5, folder 7.

²⁹⁰ Removed from box 5, folder 7.

²⁹¹ Removed from box 5, folder 7.

²⁹² Removed from box 5, folder 8.

²⁹³ Removed from box 5, folder 8.

²⁹⁴ Removed from box 5, folder 8.

²⁹⁵ Removed from box 5, folder 8.

²⁹⁶ Removed from box 5, folder 9.

²⁹⁷ Removed from box 5, folder 9.

	Box	Folder
Photograph ²⁹⁸ -- artwork: <i>The Buck's Progress Number II</i> by Washington Allston	15	16
Photograph ²⁹⁹ -- artwork: <i>The Buck's Progress Number II</i> by Washington Allston	15	17
Photograph ³⁰⁰ -- artwork: <i>The Buck's Progress Number III</i> by Washington Allston	15	18
Photograph ³⁰¹ -- artwork: <i>The Buck's Progress Number III</i> by Washington Allston	15	19
Photograph ³⁰² -- artwork: <i>Coast Scene on the Mediterranean</i> by Washington Allston	15	20
Photograph ³⁰³ -- artwork: <i>Coast Scene on the Mediterranean</i> by Washington Allston	15	21
Photograph ³⁰⁴ -- artwork: <i>Coast Scene on the Mediterranean</i> by Washington Allston	15	22
Photograph ³⁰⁵ -- artwork: <i>Coast Scene on the Mediterranean</i> by Washington Allston	15	23
Photograph ³⁰⁶ -- artwork: <i>Shipwreck</i> by Washington Allston	15	24
Photograph ³⁰⁷ -- artwork: <i>Ship at Sea</i> or <i>Ship in a Squall</i> by Washington Allston	15	25
Photograph ³⁰⁸ -- artwork: <i>Ship at Sea</i> or <i>Ship in a Squall</i> by Washington Allston	15	26
Photograph ³⁰⁹ -- artwork: <i>Landscape (Aeneas and Achates Come Ashore)</i> by Washington Allston, ca. 1800	15	27
Photograph ³¹⁰ -- artwork: <i>Storm</i> by Claude-Joseph Vernet	15	28
Photograph ³¹¹ -- artwork: <i>Rising of a Thunderstorm at Sea</i> by Washington Allston	15	29
Photograph ³¹² -- artwork: <i>The Witch of Endor</i> by Washington Allston	15	30
Photograph ³¹³ -- artwork: <i>The Witch of Endor</i> by Washington Allston	15	31

²⁹⁸ Removed from box 5, folder 9.

²⁹⁹ Removed from box 5, folder 9.

³⁰⁰ Removed from box 5, folder 9.

³⁰¹ Removed from box 5, folder 9.

³⁰² Removed from box 5, folder 10.

³⁰³ Removed from box 5, folder 10.

³⁰⁴ Removed from box 5, folder 10.

³⁰⁵ Removed from box 5, folder 10.

³⁰⁶ Removed from box 5, folder 10.

³⁰⁷ Removed from box 5, folder 10.

³⁰⁸ Removed from box 5, folder 10.

³⁰⁹ Removed from box 5, folder 10.

³¹⁰ Removed from box 5, folder 10.

³¹¹ Removed from box 5, folder 10.

³¹² Removed from box 5, folder 11.

	Box	Folder
Photograph ³¹⁴ -- artwork: <i>The Witch of Endor</i> by Washington Allston	15	32
Photograph ³¹⁵ -- artwork: <i>Paul and Silas in Prison</i> by Washington Allston	15	33
Photograph ³¹⁶ -- artwork: <i>Paul and Silas in Prison</i> by Washington Allston	15	34
Photograph ³¹⁷ -- artwork: <i>Jacob's Dream</i> by Washington Allston	15	35
Photograph ³¹⁸ -- artwork: <i>Jacob's Dream</i> by Washington Allston	15	36
Photograph ³¹⁹ -- artwork: <i>Elijah Fed by the Ravens</i> by Washington Allston	15	37
Photograph ³²⁰ -- artwork: <i>David Playing Before Saul</i> by Washington Allston	15	38
Photograph ³²¹ -- artwork: <i>Moses and the Serpent</i> by Washington Allston	15	39
Photograph ³²² -- artwork: <i>Last Supper</i> by Washington Allston, 1820	15	40
Photograph ³²³ -- artwork: <i>David Playing Before Saul</i> by Washington Allston	15	41
Photograph ³²⁴ -- artwork: <i>Moses and the Serpent</i> by Washington Allston	15	42
Photograph ³²⁵ -- artwork: <i>Adam and Eve</i> [by Washington Allston? by Thomas Cole?]	15	43
Photograph ³²⁶ -- artwork: <i>The Deluge</i>	15	44
Photograph ³²⁷ -- artwork: <i>Jacob's Dream</i> by Washington Allston	15	45
Photograph ³²⁸ -- storage area showing Washington Allston's self-portrait; <i>Rebecca at the Well</i> ; two marble busts; and other non-artistic items	15	46
Photograph ³²⁹ -- artwork: <i>The Dead Man Restored to Life by Touching the Bones of the Prophet Elijah</i> by Washington Allston	15	47

³¹³ Removed from box 5, folder 11.

³¹⁴ Removed from box 5, folder 11.

³¹⁵ Removed from box 5, folder 11.

³¹⁶ Removed from box 5, folder 11.

³¹⁷ Removed from box 5, folder 11.

³¹⁸ Removed from box 5, folder 11.

³¹⁹ Removed from box 5, folder 11.

³²⁰ Removed from box 5, folder 11.

³²¹ Removed from box 5, folder 11.

³²² Removed from box 5, folder 11.

³²³ Removed from box 5, folder 11.

³²⁴ Removed from box 5, folder 11.

³²⁵ Removed from box 5, folder 11.

³²⁶ Removed from box 5, folder 11.

³²⁷ Removed from box 5, folder 11.

³²⁸ Removed from box 5, folder 11.

³²⁹ Removed from box 5, folder 11.

	Box	Folder
Photograph ³³⁰ -- artwork: <i>Falstaff and Crew</i> by Washington Allston	15	48
Photograph ³³¹ -- artwork: <i>Lorenzo and Jessica</i> by Washington Allston, 1832	15	49
Photograph ³³² -- artwork: <i>Death of King John</i> by Washington Allston	15	50
Photograph ³³³ -- artwork: <i>Opening of the Casket</i> by Washington Allston	15	51
Photograph ³³⁴ -- artwork: group portrait of a family [painting is leaning against boards and cards with the numbers and letters "2," "0," "6," "A," and "2" visible above the painting]	15	52
Photograph ³³⁵ -- artwork: <i>The Taming of the Shrew</i> by Washington Allston	15	53
Photograph ³³⁶ -- artwork: <i>Fairies on the Sea Shore</i>	15	54
Photograph ³³⁷ -- artwork: <i>Fairies on the Sea Shore</i>	15	55
Photograph ³³⁸ -- artwork: <i>Titania's Fairie Court</i>	15	56
Photograph ³³⁹ -- artwork: <i>Unfinished Head of Jeremiah</i>	15	57
Photograph ³⁴⁰ -- artwork: <i>Unfinished Head of Jeremiah</i>	15	58
Photograph ³⁴¹ -- reverse of canvas with inscription: "The original Sketch/of/The Prophet Jeremiah/dictating to Baruch/By Washington Allston"	15	59
Photograph ³⁴² -- reverse of canvas with inscription: "The original Sketch/of/The Prophet Jeremiah/dictating to Baruch/By Washington Allston"	15	60
Photograph ³⁴³ -- artwork: <i>Jeremiah Dictating His Prophecy of the Destruction of Jerusalem to Baruch the Scribe</i> by Washington Allston, ca. 1820 [study]	15	61
Photograph ³⁴⁴ -- artwork: <i>Portrait of a Polish Jew</i> by Washington Allston, 1817	15	62

³³⁰ Removed from box 5, folder 12.

³³¹ Removed from box 5, folder 12.

³³² Removed from box 5, folder 12.

³³³ Removed from box 5, folder 12.

³³⁴ Removed from box 5, folder 12.

³³⁵ Removed from box 5, folder 12.

³³⁶ Removed from box 5, folder 12.

³³⁷ Removed from box 5, folder 12.

³³⁸ Removed from box 5, folder 12.

³³⁹ Removed from box 5, folder 13.

³⁴⁰ Removed from box 5, folder 13.

³⁴¹ Removed from box 5, folder 13.

³⁴² Removed from box 5, folder 13.

³⁴³ Removed from box 5, folder 13.

³⁴⁴ Removed from box 5, folder 13.

	Box	Folder
Photograph ³⁴⁵ -- artwork: Jeremiah Dictating His Prophecy of the Destruction of Jerusalem to Baruch the Scribe by Washington Allston, ca. 1820	15	63
Photograph ³⁴⁶ -- artwork: Study for Belshazzar's Feast by Washington Allston	15	64
Photograph ³⁴⁷ -- artwork: portrait, Isaac of York by Washington Allston	15	65
Photograph ³⁴⁸ -- artwork: Head of a Jew	15	66
Photograph ³⁴⁹ -- artwork: Head of a Jew	15	67
Photograph ³⁵⁰ -- artwork: Portrait of a Polish Jew by Washington Allston, 1817	15	68
Photograph ³⁵¹ -- artwork: portrait, Samuel Taylor Coleridge by Washington Allston	15	69
Photograph ³⁵² -- artwork: portrait, Samuel Taylor Coleridge by Washington Allston, 1806	15	70
Photograph ³⁵³ -- artwork: portrait, Samuel Taylor Coleridge by Washington Allston	15	71
Photograph ³⁵⁴ -- artwork: portrait, Samuel Taylor Coleridge by Washington Allston, 1806	15	72
Carte-de-Visite ³⁵⁵ -- portrait, Arthur Whiting Sherman, W. Kurtz, Madison Square, New York, photographer	15	73
Carte-de-Visite ³⁵⁶ -- portrait, Arthur Whiting Sherman, W. Kurtz, Madison Square, New York, photographer	15	74
Carte-de-Visite ³⁵⁷ -- portrait, Mrs. Mary Flagg Sherman, Mora, 707 Broadway, New York, photographer	15	75
Carte-de-Visite ³⁵⁸ -- portrait, George Sherman, Rockwood, 845 Broadway, New York, photographer [subject is seated in a chair and is reading a newspaper]	15	76
Photograph ³⁵⁹ -- artwork: Marine by Edmund Trowbridge Dana	15	77

³⁴⁵ Removed from box 5, folder 13.

³⁴⁶ Removed from box 5, folder 14.

³⁴⁷ Removed from box 5, folder 14.

³⁴⁸ Removed from box 5, folder 14.

³⁴⁹ Removed from box 5, folder 14.

³⁵⁰ Removed from box 5, folder 14.

³⁵¹ Removed from box 5, folder 16.

³⁵² Removed from box 5, folder 16.

³⁵³ Removed from box 5, folder 16.

³⁵⁴ Removed from box 5, folder 16.

³⁵⁵ Removed from box 5, folder 17.

³⁵⁶ Removed from box 5, folder 17.

³⁵⁷ Removed from box 5, folder 17.

³⁵⁸ Removed from box 5, folder 17.

³⁵⁹ Removed from box 6, folder 4.

	Box	Folder
Photograph ³⁶⁰ -- Henry Dexter's studio [numerous sculptures are visible]	15	78
Negative ³⁶¹ -- Henry Dexter's studio	15	79
Photograph ³⁶² -- artwork: Landscape Belonging to Judge Dana	15	80
Photograph ³⁶³ -- gravestone of Washington Irving in Tarrytown, New York	15	81
Photograph ³⁶⁴ -- historical roadside marker: "NEW YORK/ THE HEADLESS/ HORSEMAN BRIDGE/ DESCRIBED BY IRVING IN THE/ LEGEND OF SLEEPY HOLLOW/ FORMERLY SPANNED THIS/ STREAM AT THIS SPOT/ STATE EDUCATION/ DEPARTMENT 1935 "	15	82
Photograph ³⁶⁵ -- artwork: portrait, <i>Washington Irving</i> by John Wesley Jarvis, 1808	15	83
Negative ³⁶⁶ -- artwork: portrait, <i>Washington Irving</i> , 1805	15	84
Photograph ³⁶⁷ -- artwork: portrait, <i>Armestead Thomson Mason</i> by Edward Greene Malbone	15	85
Photograph ³⁶⁸ -- artwork: portrait, <i>Judge Joseph Story</i> by Alvan Clark	15	86
Photograph ³⁶⁹ -- artwork: portrait, <i>Judge Joseph Story</i> by Alvan Clark	15	87
Photograph ³⁷⁰ -- artwork: portrait, <i>Judge Joseph Story</i> by Alvan Clark	15	88
Negative ³⁷¹ -- artwork: portrait, <i>Judge Joseph Story</i> by Alvan Clark	15	89
Photograph ³⁷² -- artwork: portrait, <i>Benjamin Waterhouse</i> by Gilbert Stuart	15	90
Photograph ³⁷³ -- exterior of home of Dr. Benjamin Waterhouse, Cambridge, Massachusetts	15	91
Photograph ³⁷⁴ -- exterior of home of Dr. Benjamin Waterhouse, Cambridge, Massachusetts	15	92
Photograph ³⁷⁵ -- exterior of home of Dr. Benjamin Waterhouse, Cambridge, Massachusetts	15	93

³⁶⁰ Removed from box 6, folder 4.

³⁶¹ Removed from box 6, folder 4.

³⁶² Removed from box 6, folder 4.

³⁶³ Removed from box 6, folder 6.

³⁶⁴ Removed from box 6, folder 6.

³⁶⁵ Removed from box 6, folder 6.

³⁶⁶ Removed from box 6, folder 6.

³⁶⁷ Removed from box 6, folder 8.

³⁶⁸ Removed from box 6, folder 10.

³⁶⁹ Removed from box 6, folder 10.

³⁷⁰ Removed from box 6, folder 10.

³⁷¹ Removed from box 6, folder 10.

³⁷² Removed from box 6, folder 12.

³⁷³ Removed from box 6, folder 12.

³⁷⁴ Removed from box 6, folder 12.

	Box	Folder
Photograph ³⁷⁶ -- exterior of home of Dr. Benjamin Waterhouse, Cambridge, Massachusetts	15	94
Negative ³⁷⁷ -- [artwork?]: exterior of home of Dr. Benjamin Waterhouse, Cambridge, Massachusetts	15	95
Photographic clip sheets (30) ³⁷⁸ -- each sheet shows several of Washington Allston's works [individual items are cut off of the sheets]	15	96
Photograph ³⁷⁹ -- Dana tombstone, Old Burying Ground, Cambridge, Massachusetts	15	97
Postcard, photographic ³⁸⁰ -- "A SIGNAL LANTERN/OFF/PAUL REVERE"	15	98
Postcard ³⁸¹ -- "CHRIST CHURCH"	15	99
Postcard ³⁸² -- "CHRIST CHURCH (BUILT 1723) 'THE OLD NORTH CHURCH OF PAUL REVERE FAME'"	15	100
Negative, glass, 21.4 x 16.3 cm -- black and white; portrait of Samuel Taylor Coleridge	16	1
Negative, glass, 8.1 x 10.0 cm -- black and white; Washington Allston's Grave, Cambridge, Massachusetts	16	2
Negative, glass, 16.3 x 21.4 cm ³⁸³ -- black and white; of Prometheus	16	3
Negative, glass, 8.1 x 10.1 cm ³⁸⁴ -- black and white; of home of Dr. Benjamin Waterhouse, Cambridge, Massachusetts	16	4
Negative -- artwork: <i>The Tuscan Girl</i>	17	1
Negative -- artwork: <i>The Tuscan Girl</i>	17	2
Negative -- artwork: <i>Dante's Beatrice</i>	17	3
Negative -- artwork: <i>Dante's Beatrice</i>	17	4
Negative -- artwork: <i>Spalatro's Vision</i>	17	5
Negative -- artwork: <i>Robbers Fighting</i>	17	6
Negative -- artwork: <i>Donna Mencina in the Robber's Cavern</i>	17	7
Negative -- artwork: portrait, <i>Amy Robsart</i>	17	8
Negative -- artwork: <i>Landscape</i>	17	9
Negative -- artwork: <i>Landscape</i>	17	10
Negative -- artwork: <i>Landscape</i>	17	11
Negative -- artwork: <i>Landscape, 1817</i>	17	12
Negative -- artwork: <i>Lorenzo and Jessica</i>	17	13

³⁷⁵ Removed from box 6, folder 12.

³⁷⁶ Removed from box 6, folder 12.

³⁷⁷ Removed from box 6, folder 12.

³⁷⁸ Removed from box 6, folder 15.

³⁷⁹ Removed from box 7, folder 9.

³⁸⁰ Removed from box 7, folder 9.

³⁸¹ Removed from box 7, folder 9.

³⁸² Removed from box 7, folder 9.

³⁸³ Removed from box 3, folder 13.

³⁸⁴ Removed from box 6, folder 12.

	Box	Folder
Photograph -- artwork: <i>Lorenzo and Jessica</i>	17	14
Negative -- artwork: <i>Italian Shepherd Boy, 1819</i>	17	15
Negative -- artwork: <i>Italian Shepherd Boy, 1819</i>	17	16
Negative -- artwork: <i>Italian Shepherd Boy</i>	17	17
Negative -- artwork: <i>Portrait of His Mother</i>	17	18
Negative -- artwork: portrait, <i>Mrs. Siddons</i>	17	19
Negative -- artwork: <i>Portrait of Frances Dana Channing</i>	17	20
Negative -- artwork: portrait, <i>Benjamin West</i>	17	21
Negative -- artwork: portrait, <i>Benjamin West</i>	17	22
Negative -- artwork: portrait, <i>Samuel Williams</i>	17	23
Negative -- artwork: portrait, <i>Samuel Williams</i>	17	24
Negative -- artwork: <i>The Student</i>	17	25
Negative -- artwork: Miniature of <i>William Ellery Channing</i>	17	26
Negative -- artwork: portrait, <i>General Heath</i>	17	27
Negative -- artwork: <i>Scene in an Eating House, Bristol, 1814</i>	17	28
Negative -- artwork: <i>Angel Delivering St. Peter from Prison</i>	17	29
Negative -- artwork: <i>The Opening of the Casket</i>	17	30
Negative -- artwork: portrait, <i>Samuel Hammond</i>	17	31
Negative -- artwork: <i>Evening Hymn</i>	17	32
Negative -- artwork: <i>Italian Landscape, Bristol, 1814</i>	17	33
Negative -- artwork: portrait, <i>Dr. Waterhouse's Mother</i>	17	34
Negative -- artwork: <i>The Valentine</i>	17	35
Negative -- artwork: <i>The Valentine</i>	17	36
Negative -- artwork: portrait, <i>Elizabeth Davis Locke Harrington</i>	17	37
Negative -- artwork: <i>Mother Watching Her Child</i>	17	38
Negative -- artwork: <i>Mother Watching Her Child</i>	17	39
Negative -- artwork: <i>The Buck's Progress Number I</i>	17	40
Negative -- artwork: <i>The Buck's Progress Number II</i>	17	41
Negative -- artwork: <i>The Buck's Progress Number III</i>	17	42
Negative -- artwork: <i>Costal Scene on the Mediterranean</i>	17	43
Negative -- artwork: <i>The Witch of Endor</i>	17	44
Negative -- artwork: <i>Saint Paul and Silas in Prison</i>	17	45
Negative -- artwork: <i>Jacob's Dream</i>	17	46
Negative -- artwork: <i>Adam and Eve</i>	17	47
Negative -- artwork: <i>Fairies on the Sea Shore</i>	17	48
Negative -- artwork: portrait, <i>Coleridge, 1806</i>	17	49
Negative -- artwork: <i>Rebecca at the Well</i>	17	50
Negative -- artwork: <i>Rebecca at the Well</i>	17	51
Negative -- artwork: <i>The Sisters</i>	17	52
Negative -- artwork: <i>Miriam</i>	17	53
Negative -- artwork: <i>Landscape, Fiddler and Dancers</i>	17	54
Negative -- artwork: <i>Landscape</i>	17	55
Negative -- artwork: <i>Landscape with Cart and Horseman</i>	17	56
Negative -- artwork: <i>Italian Landscape with Peasants</i>	17	57
Negative -- artwork: <i>Italian Landscape with Peasants</i>	17	58

	Box	Folder
Negative -- artwork: <i>Contemplation</i>	17	59
Negative -- verso of <i>Jeremiah</i>	17	60
Negative -- verso of <i>The Tippler</i> , June 1799	17	61
Negative -- verso of <i>The Tippler</i> , June 1799	17	62
Negative -- Washington Allston's gravestone	17	63
Negative -- artwork: <i>Donna Mencia in the Robber's Cavern</i>	17	64
Negative -- artwork: The Head of Saint Peter	17a	1
Negative -- artwork: Head of Jeremiah	17a	2
Negative -- artwork: 18 th Century Italian artist landscape	17a	3
Negative -- artwork: Edmund Trowbridge Dana, painting of sea shore	17a	4
Negative -- artwork: Watercolor sketch of Gothic church in Roxbury	17a	5
Negative -- artwork: Self-portrait of Washington Allston	17b	1
Negative -- artwork: <i>Self portrait</i>	17b	2
Negative -- artwork: <i>Allston</i>	17b	3
Negative -- artwork: <i>Gilbert Stuart and His Family</i>	17b	4
Negative -- artwork: portrait of Washington Allston	17b	5
Negative -- artwork: <i>Tuscan Maid</i>	17b	6
Negative -- artwork: <i>Spalatro's Vision</i>	17b	7
Negative -- artwork: <i>Danger</i>	17b	8
Negative -- artwork: <i>Lorenzo and Jessica</i>	17b	9
Negative -- artwork: <i>Italian Shepherd Boy</i>	17b	10
Negative -- artwork: portrait, <i>Ann Channing</i>	17b	11
Negative -- artwork: portrait, <i>Benjamin West</i>	17b	12
Negative -- artwork: portrait, <i>Samuel Williams</i>	17b	13
Negative -- artwork: <i>Head of Angel</i>	17b	14
Negative -- artwork: <i>Jason</i>	17b	15
Negative -- artwork: <i>Opening of the Casket</i>	17b	16
Negative -- artwork: <i>Evening Hymn</i>	17b	17
Negative -- artwork: <i>Italian Landscape</i>	17b	18
Negative -- artwork: <i>Diana and Her Nymphs in the Chase</i>	17b	19
Negative -- artwork: <i>Heliodorus in the Temple</i>	17b	20
Negative -- artwork: portrait, Allston's Mother	17b	21
Negative -- artwork: <i>Mother Watching Her Child</i>	17b	22
Negative -- artwork: <i>The Buck's Progress Number I</i>	17b	23
Negative -- artwork: <i>The Buck's Progress Number II</i>	17b	24
Negative -- artwork: <i>The Buck's Progress Number III</i>	17b	25
Negative -- artwork: <i>Storm</i>	17b	26
Negative -- sketch for <i>Jacob's Dream</i>	17b	27
Negative -- sketch for <i>Jacob's Dream</i>	17b	28
Negative -- sketch for <i>Jacob's Dream</i>	17b	29
Negative -- artwork: <i>The Deluge</i>	17b	30
Negative -- artwork: <i>Fairies on the Sea Shore</i>	17b	31
Negative -- sketch: <i>Titania's Court</i>	17b	32
Negative -- artwork: <i>Man with a Book</i>	17b	33

	Box	Folder
Negative -- artwork: <i>Rosalee Listening to the Music</i>	17b	34
Negative -- artwork: <i>Miriam</i>	17b	35
Negative, glass -- Outline of the whole picture of <i>Jacob's Dream</i>	17b	36
Negative -- artwork: <i>Belshazzar</i>	17b	37
Negative -- artwork: <i>Belshazzar's Hand</i>	17b	38
Negative -- artwork: portrait, <i>Coleridge</i>	17b	39
Negative -- artwork: portrait, <i>President Walker, December 1798</i>	17b	40
Negative -- A house	17b	41
Negative -- artwork: portrait, <i>Mother of William Ellery Channing</i>	17b	42
Negative -- artwork: <i>Burgomaster's Joke</i>	17b	43
Negative -- artwork: <i>Knickerbocker</i>	17b	44
Negative -- artwork: <i>Rich Bookseller</i>	17b	45
Negative, glass -- artwork: <i>Roman Landscape</i>	17b	46

Series VIII. Lantern Slides (cataloged as LONG 20190-20255)

Catalog No.	Transparency, lantern-slide	Folder
LONG 20190	Lantern slide box	
LONG 20191	Longfellow's statement about Allston	1
LONG 20192	portrait of Mrs. William Allston, Esther La Brosse de Marboeuf, from <i>Waccamaw</i> , p. 9	2
LONG 20193	portrait of William Alston of Clifton (b. 1756), from <i>Waccamaw</i> , p. 23	3
LONG 20194	portrait of Thomas Allston of Prospect Hill (1764-1794), from <i>Waccamaw</i> , p. 29	4
LONG 20195	portrait of Gov. Robert F. Allston	5
LONG 20196	portrait of William Algernon Alston (b. 1782) of Rose Hill, from <i>Waccamaw</i> , p. 39	6
LONG 20197	photograph of drawing room at Fairfield [home of Charles Allston?]	7
LONG 20198	portrait of Washington Allston by a French artist, [ca. 1793?]	8
LONG 20199	photograph of the house of Dr. Benjamin Waterhouse	9
LONG 20200	<i>Buck's Progress I</i> , "Introduction of a Country Lad in a Club of Town Bucks," by Washington Allston	10
LONG 20201	<i>Buck's Progress II</i> , "A Beau in his Dressing Room," by Washington Allston	11
LONG 20202	<i>Buck's Progress III</i> , "A Midnight Fray with Watchmen," by Washington Allston	12
LONG 20203	caricature of President Willard of Harvard by Washington Allston	13
LONG 20204	Hasty Pudding Club journal, 7 March 1799, by Washington Allston	14
LONG 20205	caricatures from Washington Allston letter to John Knapp, 23 October 1800	15
LONG 20206	<i>Rising of a Thunder Storm at Sea</i> by Washington Allston, 1804	16
LONG 20207	landscape painted by Washington Allston when at college, 1798	17
LONG 20208	<i>The Deluge</i> by Washington Allston, 1804	18
LONG 20209	<i>Diana and Her Nymphs in the Chase</i> by Washington Allston, 1805	19
LONG 20210	<i>Italian Landscape</i> by Washington Allston, 1805	20
LONG 20211	<i>Italian Landscape</i> by Washington Allston, 1830	21
LONG 20212	<i>Jason</i> by Washington Allston, 1805	22
LONG 20213	portrait of Washington Irving by Washington Allston, 1805	23
LONG 20214	<i>A Schapen Laughing at a Burgomaster's Joke</i> , an engraving by Washington Allston in Irving's <i>Knickerbocker History of New York</i>	24

Catalog No.	Transparency, lantern-slide	Folder
LONG 20215	<i>Wouter van Twillen's Decision in the Case of Schoonhoven and Blucker</i> , an engraving by Washington Allston in Irving's <i>Knickerbocker History of New York</i>	25
LONG 20216	<i>Casket Scene From The Merchant of Venice</i> by Washington Allston, 1807	26
LONG 20217	<i>Rich Bookseller and Poor Author</i> by Washington Allston, 1809	27
LONG 20218	portrait of Allston's mother, Rachel Moore, 1809	28
LONG 20219	portrait of Ann Channing Allston by Washington Allston, 1811	29
LONG 20220	portrait of Lucy Ellery Channing by Washington Allston, 1811	30
LONG 20221	<i>The Paint King of Washington Allston Illustrated</i> by W.H. Dougal	31
LONG 20222	<i>Mother Watching Her Sleeping Child</i> by Washington Allston, 1814	32
LONG 20223	portrait of Washington Allston by Frederick Walker, 1812	33
LONG 20224	portrait of Benjamin West by Washington Allston, 1814	34
LONG 20225	portrait of Samuel Taylor Coleridge by Washington Allston, 1814	35
LONG 20226	<i>Coleridge Table-Talking</i>	36
LONG 20227	<i>Donna Mencina in the Robbers' Cavern</i> by Washington Allston, 1815	37
LONG 20228	portrait of Samuel Williams by Washington Allston, 13 June 1816	38
LONG 20229	<i>Jacob's Dream</i> by Washington Allston, 1817	39
LONG 20230	angel from <i>Jacob's Dream</i> by Washington Allston, 1817	40
LONG 20231	head of an angel by Washington Allston	41
LONG 20232	two angels from <i>Jacob's Dream</i> by Washington Allston, 1817	42
LONG 20233	group of angels from <i>Jacob's Dream</i> by Washington Allston, 1817	43
LONG 20234	<i>The Witch of Endor</i> by Washington Allston, 1820	44
LONG 20235	<i>Miriam the Prophetess</i> by Washington Allston, 1820	45
LONG 20236	<i>Allston and Gilbert Stuart's Family</i> by [Washington Allston?]	46
LONG 20237	<i>Washington Allston of Brookgreen</i> by Washington Allston; from <i>Waccamaw</i> , p. 13	47
LONG 20238	map of Cambridgeport at the time of Washington Allston, 1843	48
LONG 20239	portrait of Washington Allston by George W. Flagg	49
LONG 20240	<i>Spalatro's Vision of the Bloody Hand</i> by Washington Allston, 1830; from engraving	50
LONG 20241	<i>Rosalie Listening to the Music</i> [Allston's Poem] by Washington Allston, 1835	51
LONG 20242	<i>Evening Hymn</i> by Washington Allston, 1835	52

Catalog No.	Transparency, lantern-slide	Folder
LONG 20243	<i>The Tuscan Girl</i> [Allston's Poem] by Washington Allston, 1831	53
LONG 20244	<i>An Italian Shepherd Boy</i> by Washington Allston, 1821-1823	54
LONG 20245	<i>Lorenzo and Jessica</i> by Washington Allston, 1832	55
LONG 20246	<i>Death of King John</i> by Washington Allston, 1837	56
LONG 20247	<i>Dance of Fairies on the Sea Shore</i> by Washington Allston; from engraving by Cheney, 1837	57
LONG 20248	sketch for <i>Titania's Court</i> by Washington Allston, 1837	58
LONG 20249	<i>Danger</i> by Washington Allston	59
LONG 20250	<i>Heliodorus Driven From the Temple</i> by Washington Allston; from engraving by Cheney, 1837	60
LONG 20251	portrait of Washington Allston by George W. Flagg, 1839	61
LONG 20252	<i>Belshazzar's Feast</i> : study in colors by Washington Allston	62
LONG 20253	sketch for left hand of <i>Belshazzar</i> by Washington Allston	63
LONG 20254	photograph of Washington Allston's tomb, Old Cambridge Burying-Ground, with Christ Church in background	64
LONG 20255	photograph of Washington Allston's studio	65



Figure 6: Washington Allston, *Dido and Anna*, ca. 1813-1815.
The Lowe Art Museum, University of Miami, Florida.

Washington Allston (1779-1843) Materials (LONG 20258), Series VII. Photographs and Negatives.

BIBLIOGRAPHY

Gerdts, William H. & Theodore E. Stebbins, Jr. *"A Man of Genius:" The Art of Washington Allston (1779-1843)*. Boston: The Museum of Fine Arts, 1979.

Godwin, D.E.W, Anita B. Israel, and Jennifer Quinn. *Finding Aid for Henry Wadsworth Longfellow Dana (1881-1950) Papers, 1744-1971 (bulk dates 1850-1950)*. Boston: National Park Service, August 1999.

Iles, George. *Leading American Inventors*. Biographies of Leading Americans, W.P. Trent, ed. New York: Henry Holt and Company, 1912.

U.S. Department of the Interior, National Park Service. *Automated National Catalog System User Manual*. Washington, D.C.: National Park Service, April 1987.

U.S. Department of the Interior, National Park Service. *Museum Handbook*, Part II: Museum Records. Washington, D.C.: National Park Service, September 1984.

Wright, Nathalia, ed. *The Correspondence of Washington Allston*. Lexington, KY.: The University Press of Kentucky, 1993.

APPENDIX A:**LIST OF CATALOG NUMBERS**

- LONG 14497 Catalog³⁸⁵ -- *Washington Allston 1779-1843: A Loan Exhibition of Paintings, Drawings and Memorabilia.*
- LONG 14503 Book³⁸⁶ -- Susan Lowndes Allston, *Brookgreen Waccamau in the Carolina Low Country* (Charleston: Walker, Evans & Cogswell Co, 1935).
- LONG 14522 Catalog³⁸⁷ -- *Catalogue of the Fortieth Exhibition of Painting and Statuary at the Athenaeum Gallery, Beacon St., Boston.*
- LONG 14523 Catalog³⁸⁸ -- *Catalogue of the Forty-Third Exhibition of Painting and Statuary at the Athenaeum Gallery, Beacon St., Boston, 1867.*
- LONG 14537 Book, Address³⁸⁹ -- memo book with an alphabetical listing of owners of Washington Allston's work.
- LONG 14538 Journal³⁹⁰ -- *College Art Journal*, Volume IV, Number 4.
- LONG 14539 Bulletin³⁹¹ -- *Bulletin of the Fogg Museum of Art*, Volume 10, Number 1-6, December 1947.
- LONG 14540 Bulletin³⁹² -- *Concert Bulletin of the Boston Symphony Orchestra*, Number 23-24.
- LONG 14541 Bulletin³⁹³ -- *Concert Bulletin of the Boston Symphony Orchestra*, Number 23-24.
- LONG 14542 Bulletin³⁹⁴ -- *Concert Bulletin of the Boston Symphony Orchestra*, Number 23-24.

³⁸⁵ Listed in Series I. Biography, box 3, folder 11.

³⁸⁶ Listed in Series I. Biography, box 1, folder 9.

³⁸⁷ Listed in Series II. Works, box 4, folder 8.

³⁸⁸ Listed in Series II. Works, box 4, folder 8.

³⁸⁹ Listed in Series IV. Trust, box 6, folder 13.

³⁹⁰ Listed in Series II. Works, box 4, folder 7.

³⁹¹ Listed in Series IV. Trust, box 6, folder 17.

³⁹² Listed in Series I. Biography, box 2, folder 8.

³⁹³ Listed in Series I. Biography, box 2, folder 8.

³⁹⁴ Listed in Series I. Biography, box 2, folder 8.

- LONG 14543 Bulletin³⁹⁵ -- *Concert Bulletin of the Boston Symphony Orchestra*, Number 23-24.
- LONG 14545 Book³⁹⁶ -- E.P. Richardson, *World of the Romantic Artist: A Survey of American Culture from 1800-1825*.
- LONG 14546 Book³⁹⁷ -- Henry Wadsworth Longfellow Dana, Metropolitan Museum of Art Bulletin
- LONG 14547 Catalog³⁹⁸ -- Frederick A. Sweet, *Hudson River School and the Early American Landscape Tradition*.
- LONG 14548 Catalog³⁹⁹ -- Frederick A. Sweet, *Hudson River School and the Early American Landscape Tradition*.
- LONG 20190 Lantern slide box⁴⁰⁰
- LONG 20191 Transparency, lantern-slide⁴⁰¹ -- Longfellow's Statement About Allston.
- LONG 20192 Transparency, lantern-slide⁴⁰² -- portrait of Mrs. William Allston, Esther La Brosse de Marboeuf, from *Waccamaw*, p. 9.
- LONG 20193 Transparency, lantern-slide⁴⁰³ -- portrait of William Alston of Clifton (b. 1756), from *Waccamaw*, p. 23.
- LONG 20194 Transparency, lantern-slide⁴⁰⁴ -- portrait of Thomas Allston of Prospect Hill (1764-1794), from *Waccamaw*, p. 29.
- LONG 20195 Transparency, lantern-slide⁴⁰⁵ -- portrait of Gov. Robert F. Allston.
- LONG 20196 Transparency, lantern-slide⁴⁰⁶ -- Portrait of William Algernon Alston (b. 1782) of Rose Hill, from *Waccamaw*, p. 39.
- LONG 20197 Transparency, lantern-slide⁴⁰⁷ -- photograph of drawing room at Fairfield [home of Charles Allston?].

³⁹⁵ Listed in Series I. Biography, box 2, folder 8.

³⁹⁶ Listed in Series IV. Trust, box 7, folder 2.

³⁹⁷ Listed in Series IV. Trust, box 6, folder 17.

³⁹⁸ Listed in Series IV. Trust, box 7, folder 1.

³⁹⁹ Listed in Series IV. Trust, box 7, folder 1.

⁴⁰⁰ Listed in Series VIII. Lantern Slides.

⁴⁰¹ Listed in Series VIII. Lantern Slides.

⁴⁰² Listed in Series VIII. Lantern Slides.

⁴⁰³ Listed in Series VIII. Lantern Slides.

⁴⁰⁴ Listed in Series VIII. Lantern Slides.

⁴⁰⁵ Listed in Series VIII. Lantern Slides.

⁴⁰⁶ Listed in Series VIII. Lantern Slides.

- LONG 20198 Transparency, lantern-slide⁴⁰⁸ -- portrait of Washington Allston by a French artist, [ca. 1793?].
- LONG 20199 Transparency, lantern-slide⁴⁰⁹ -- photograph of the house of Dr. Benjamin Waterhouse.
- LONG 20200 Transparency, lantern-slide⁴¹⁰ -- *Buck's Progress I*, "Introduction of a Country Lad in a Club of Town Bucks," by Washington Allston.
- LONG 20201 Transparency, lantern-slide⁴¹¹ -- *Buck's Progress II*, "A Beau in his Dressing Room," by Washington Allston.
- LONG 20202 Transparency, lantern-slide⁴¹² -- *Buck's Progress III*, "A Midnight Fray with Watchmen," by Washington Allston.
- LONG 20203 Transparency, lantern-slide⁴¹³ -- caricature of Pres. Willard of Harvard by Washington Allston.
- LONG 20204 Transparency, lantern-slide⁴¹⁴ -- Hasty Pudding Club journal, March 7, 1799, by Washington Allston.
- LONG 20205 Transparency, lantern-slide⁴¹⁵ -- caricatures from Washington Allston letter to John Knapp, 23 October 1800.
- LONG 20206 Transparency, lantern-slide⁴¹⁶ -- *Rising of a Thunder Storm at Sea* by Washington Allston, 1804.
- LONG 20207 Transparency, lantern-slide⁴¹⁷ -- landscape painted by Washington Allston when at college, 1798.
- LONG 20208 Transparency, lantern-slide⁴¹⁸ -- *The Deluge* by Washington Allston, 1804.
- LONG 20209 Transparency, lantern-slide⁴¹⁹ -- *Diana and Her Nymphs in the Chase* by Washington Allston, 1805.

⁴⁰⁷ Listed in Series VIII. Lantern Slides.

⁴⁰⁸ Listed in Series VIII. Lantern Slides.

⁴⁰⁹ Listed in Series VIII. Lantern Slides.

⁴¹⁰ Listed in Series VIII. Lantern Slides.

⁴¹¹ Listed in Series VIII. Lantern Slides.

⁴¹² Listed in Series VIII. Lantern Slides.

⁴¹³ Listed in Series VIII. Lantern Slides.

⁴¹⁴ Listed in Series VIII. Lantern Slides.

⁴¹⁵ Listed in Series VIII. Lantern Slides.

⁴¹⁶ Listed in Series VIII. Lantern Slides.

⁴¹⁷ Listed in Series VIII. Lantern Slides.

⁴¹⁸ Listed in Series VIII. Lantern Slides.

- LONG 20210 Transparency, lantern-slide⁴²⁰ -- *Italian Landscape* by Washington Allston, 1805.
- LONG 20211 Transparency, lantern-slide⁴²¹ -- *Italian Landscape* by Washington Allston, 1830.
- LONG 20212 Transparency, lantern-slide⁴²² -- *Jason* by Washington Allston, 1805.
- LONG 20213 Transparency, lantern-slide⁴²³ -- portrait of Washington Irving by Washington Allston, 1805.
- LONG 20214 Transparency, lantern-slide⁴²⁴ -- *A Schapen Laughing at a Burgomaster's Joke*, an engraving by Washington Allston in Irving's *Knickerbocker History of New York*.
- LONG 20215 Transparency, lantern-slide⁴²⁵ -- *Wouter van Twillen's Decision in the Case of Schoonhoven and Blucker*, an engraving by Washington Allston in Irving's *Knickerbocker History of New York*.
- LONG 20216 Transparency, lantern-slide⁴²⁶ -- *Casket Scene From The Merchant of Venice* by Washington Allston, 1807.
- LONG 20217 Transparency, lantern-slide⁴²⁷ -- *Rich Bookseller and Poor Author* by Washington Allston, 1809.
- LONG 20218 Transparency, lantern-slide⁴²⁸ -- portrait of Allston's mother, Rachel Moore, 1809.
- LONG 20219 Transparency, lantern-slide⁴²⁹ -- portrait of Ann Channing Allston by Washington Allston, 1811.
- LONG 20220 Transparency, lantern-slide⁴³⁰ -- portrait of Lucy Ellery Channing by Washington Allston, 1811.

⁴¹⁹ Listed in Series VIII. Lantern Slides.

⁴²⁰ Listed in Series VIII. Lantern Slides.

⁴²¹ Listed in Series VIII. Lantern Slides.

⁴²² Listed in Series VIII. Lantern Slides.

⁴²³ Listed in Series VIII. Lantern Slides.

⁴²⁴ Listed in Series VIII. Lantern Slides.

⁴²⁵ Listed in Series VIII. Lantern Slides.

⁴²⁶ Listed in Series VIII. Lantern Slides.

⁴²⁷ Listed in Series VIII. Lantern Slides.

⁴²⁸ Listed in Series VIII. Lantern Slides.

⁴²⁹ Listed in Series VIII. Lantern Slides.

⁴³⁰ Listed in Series VIII. Lantern Slides.

- LONG 20221 Transparency, lantern-slide⁴³¹ -- *The Paint King of Washington Allston Illustrated* by W.H. Dougal.
- LONG 20222 Transparency, lantern-slide⁴³² -- *Mother Watching Her Sleeping Child* by Washington Allston, 1814.
- LONG 20223 Transparency, lantern-slide⁴³³ -- portrait of Washington Allston by Frederick Walker, 1812.
- LONG 20224 Transparency, lantern-slide⁴³⁴ -- portrait of Benjamin West by Washington Allston, 1814.
- LONG 20225 Transparency, lantern-slide⁴³⁵ -- portrait of Samuel Taylor Coleridge by Washington Allston, 1814.
- LONG 20226 Transparency, lantern-slide⁴³⁶ -- *Coleridge Table-Talking*.
- LONG 20227 Transparency, lantern-slide⁴³⁷ -- *Donna Mencia in the Robbers' Cavern* by Washington Allston, 1815.
- LONG 20228 Transparency, lantern-slide⁴³⁸ -- portrait of Samuel Williams by Washington Allston, 13 June 1816.
- LONG 20229 Transparency, lantern-slide⁴³⁹ -- *Jacob's Dream* by Washington Allston, 1817.
- LONG 20230 Transparency, lantern-slide⁴⁴⁰ -- angel from *Jacob's Dream* by Washington Allston, 1817.
- LONG 20231 Transparency, lantern-slide⁴⁴¹ -- head of an angel by Washington Allston.
- LONG 20232 Transparency, lantern-slide⁴⁴² -- two angels from *Jacob's Dream* by Washington Allston, 1817.
- LONG 20233 Transparency, lantern-slide⁴⁴³ -- group of angels from *Jacob's Dream* by Washington Allston, 1817.

⁴³¹ Listed in Series VIII. Lantern Slides.

⁴³² Listed in Series VIII. Lantern Slides.

⁴³³ Listed in Series VIII. Lantern Slides.

⁴³⁴ Listed in Series VIII. Lantern Slides.

⁴³⁵ Listed in Series VIII. Lantern Slides.

⁴³⁶ Listed in Series VIII. Lantern Slides.

⁴³⁷ Listed in Series VIII. Lantern Slides.

⁴³⁸ Listed in Series VIII. Lantern Slides.

⁴³⁹ Listed in Series VIII. Lantern Slides.

⁴⁴⁰ Listed in Series VIII. Lantern Slides.

⁴⁴¹ Listed in Series VIII. Lantern Slides.

⁴⁴² Listed in Series VIII. Lantern Slides.

- LONG 20234 Transparency, lantern-slide⁴⁴⁴ -- *The Witch of Endor* by Washington Allston, 1820.
- LONG 20235 Transparency, lantern-slide⁴⁴⁵ -- *Miriam the Prophetess* by Washington Allston, 1820.
- LONG 20236 Transparency, lantern-slide⁴⁴⁶ -- *Allston and Gilbert Stuart's Family* by [Washington Allston?].
- LONG 20237 Transparency, lantern-slide⁴⁴⁷ -- *Washington Allston of Brookgreen* by Washington Allston, from *Waccamaw*, p. 13.
- LONG 20238 Transparency, lantern-slide⁴⁴⁸ -- map of Cambridgeport at the time of Washington Allston, 1843.
- LONG 20239 Transparency, lantern-slide⁴⁴⁹ -- portrait of Washington Allston by George W. Flagg.
- LONG 20240 Transparency, lantern-slide⁴⁵⁰ -- *Spalatro's Vision of the Bloody Hand* by Washington Allston, 1830; from engraving.
- LONG 20241 Transparency, lantern-slide⁴⁵¹ -- *Rosalie Listening to the Music* [Allston's poem] by Washington Allston, 1835.
- LONG 20242 Transparency, lantern-slide⁴⁵² -- *Evening Hymn* by Washington Allston, 1835.
- LONG 20243 Transparency, lantern-slide⁴⁵³ -- *The Tuscan Girl* [Allston's Poem] by Washington Allston, 1831.
- LONG 20244 Transparency, lantern-slide⁴⁵⁴ -- *An Italian Shepherd Boy* by Washington Allston, 1821-1823.
- LONG 20245 Transparency, lantern-slide⁴⁵⁵ -- *Lorenzo and Jessica* by Washington Allston, 1832.

⁴⁴³ Listed in Series VIII. Lantern Slides.

⁴⁴⁴ Listed in Series VIII. Lantern Slides.

⁴⁴⁵ Listed in Series VIII. Lantern Slides.

⁴⁴⁶ Listed in Series VIII. Lantern Slides.

⁴⁴⁷ Listed in Series VIII. Lantern Slides.

⁴⁴⁸ Listed in Series VIII. Lantern Slides.

⁴⁴⁹ Listed in Series VIII. Lantern Slides.

⁴⁵⁰ Listed in Series VIII. Lantern Slides.

⁴⁵¹ Listed in Series VIII. Lantern Slides.

⁴⁵² Listed in Series VIII. Lantern Slides.

⁴⁵³ Listed in Series VIII. Lantern Slides.

⁴⁵⁴ Listed in Series VIII. Lantern Slides.

- LONG 20246 Transparency, lantern-slide⁴⁵⁶ -- *Death of King John* by Washington Allston, 1837.
- LONG 20247 Transparency, lantern-slide⁴⁵⁷ -- *Dance of Fairies on the Sea Shore* by Washington Allston; from engraving by Cheney, 1837.
- LONG 20248 Transparency, lantern-slide⁴⁵⁸ -- sketch for *Titania's Court* by Washington Allston, 1837.
- LONG 20249 Transparency, lantern-slide⁴⁵⁹ -- *Danger* by Washington Allston.
- LONG 20250 Transparency, lantern-slide⁴⁶⁰ -- *Heliodorus Driven From the Temple* by Washington Allston; from engraving by Cheney, 1837.
- LONG 20251 Transparency, lantern-slide⁴⁶¹ -- portrait of Washington Allston by George W. Flagg, 1839.
- LONG 20252 Transparency, lantern-slide⁴⁶² -- *Belshazzar's Feast*: study in colors by Washington Allston.
- LONG 20253 Transparency, lantern-slide⁴⁶³ -- sketch for left hand of *Belshazzar* by Washington Allston.
- LONG 20254 Transparency, lantern-slide⁴⁶⁴ -- photograph of Washington Allston's tomb, Old Cambridge Burying-Ground, with Christ Church in background.
- LONG 20255 Transparency, lantern-slide⁴⁶⁵ -- photograph of Washington Allston's studio.
- LONG 20258 Washington Allston (1779-1843) Materials, 1798-1966 (bulk dates 1939-1949) -- as compiled by H.W.L. Dana (1881-1950).
- LONG 25612⁴⁶⁶ Clipping – [Letter to the Editors], “Poems by Washington Allston,” *The Evening Signal*, New York, 7 January 1840.
-

⁴⁵⁵ Listed in Series VIII. Lantern Slides.

⁴⁵⁶ Listed in Series VIII. Lantern Slides.

⁴⁵⁷ Listed in Series VIII. Lantern Slides.

⁴⁵⁸ Listed in Series VIII. Lantern Slides.

⁴⁵⁹ Listed in Series VIII. Lantern Slides.

⁴⁶⁰ Listed in Series VIII. Lantern Slides.

⁴⁶¹ Listed in Series VIII. Lantern Slides.

⁴⁶² Listed in Series VIII. Lantern Slides.

⁴⁶³ Listed in Series VIII. Lantern Slides.

⁴⁶⁴ Listed in Series VIII. Lantern Slides.

⁴⁶⁵ Listed in Series VIII. Lantern Slides.

⁴⁶⁶ Listed in Series II. Works, box 5, folder 14a.

APPENDIX B:**LIST OF BOOKS, MAGAZINES, AND CATALOGS**

In the third edition of this finding aid, the processors included 113 books and magazines, originally cataloged in 1989, as "Series X. Books, Magazines, and Catalogs." This series was subdivided into 52 books identified as "Washington Allston's Library" and 61 items identified as "H.W.L. Dana's Library re: Washington Allston." Subsequent examination indicates that many of these books were identified in the wrong category, and many of Martha Remington (Dana) Allston's books were included with her husband's.

The books are now shelved with the rest of the Longfellow House-Washington's Headquarters NHS historic library. Their individual catalog numbers are LONG 14420, 14355-14368, 14442-14463, 14465-14496, 14498-14502, and 14504-14521, 14524-14536, 14544, and 14549-14554.

This appendix identifies for the researcher four groupings in the historic library collection: Washington Allston's Library, Martha Remington (Dana) Allston's Library, Works by Washington Allston, and Reference Works Regarding Washington Allston.

Washington Allston's Library

Ancient Reliques or, Delineations of Monastic, Castellated, & Domestic Architecture and Other Interesting Subjects with Historical and Descriptions Sketches. London: W. Clarke, 1812.
Volume I (LONG 14466)
Ink, front endpaper: "W. Allston"

Antiquarian and Topographical Cabinet, Containing a Series of Elegant Views of the Most Interesting Objects of Curiosity in Great Britain. London: W. Clarke, 1808-1811.
Volume II, IV, X (LONG 14467-14469)
Ink, front endpaper: "W. Allston"

Beecher, Lyman. *Government of God Desirable: A Sermon Delivered at Newark, N.J. October, 1808, During the Session of the Synod of New-York and New-Jersey.* Boston: T. R. Marvin, 1827. (LONG 14521)
Ink, front cover: "Wa-Allston"

Carey, William. *Critical Description and Analytical Review of "Death on the Pale Horse," Painted by Benjamin West, P.R.A. with Desultory...* London: John Turner, 1817. (LONG 14450)
Ink, title page: "Wa. Allston"

Churchill, C. *Poems.* London: John Churchill, 1765. (LONG 14493)
Ink, title page: "Washington Allston./ Harvard ... 1799-" Pencil sketches on back endpaper.

- Crabbe, G. *Borough: A Poem in Twenty-Four Letters*. Philadelphia: Bradford and Inskeep, 1810. (LONG 14505)
Ink, title page: "W. Allston"
- Cunningham, Allan. *Lives of the Most Eminent British Painters and Sculptors*. New York: J. & J. Harper, 1834. Volume IV & V (LONG 14453-14454)
- Cunningham, Allan. *Lives of the Most Eminent British Painters and Sculptors*. New York: Harper & Bros., 1835. Volume II (LONG 14452)
- Dalmazzone, Angelo. *Antiquarian or the Guide for Foreigners to go the Rounds of the Antiquities of Rome*. Rome: ____, 1803. (LONG 14420)
Ink, title page: "W. Allston", Ink, front endpaper: "Earl Wentworth Huckel / from H.W.L. Dana / Cambridge, 1908" Pencil, front endpaper: "given back to H. W. L. Dana/ by Earl Hachel (c. 1948)"
- Dupaty, Charles-Marguerite-Jean-Baptiste Mercier. *Dupaty's Travels through Italy in a Series of Letters*. c. 1789. (LONG 14470)
Ink, front endpaper: "Washington Allston"
- Fuseli, Henry. *Lectures on Painting, Delivered at the Royal Academy, by Henry Fuseli, P.P. with Additional Observations and Notes*. London: T. Cadell and W. Davies, 1820. (LONG 14458)
Ink, title page: "W. Allston."
- Grosse, *Dagger*. London: Vernor and Hood, 1795. (LONG 14481)
Ink, title page: "Washington Allston", sketch of man's profile inside back cover
- Leusden, Johanne, ed. *Novum Testamentum, Cum Versione Latina*. London: Lugduni Betavorum, 1772. (LONG 14506)
Ink, front endpaper: "Wa. Allston"
- Milman, H.H. *Belshazzar: A Dramatic Poem*. Boston: Wells and Lilly, 1822 (LONG 14451)
Ink, title page: "W. Allston"
- Schiller, Frederick. *Don Carlos, Prince Royal of Spain: An Historical Drama, from the German of Frederick Schiller...* London: W. Miller, 1798. (LONG 14442)
Ink, title page: "W. Allston"
- Shakespeare, William. *Gallery of Shakespeare, or Illustrations of his Dramatic Works, Engraved in Aqua-fortis from Retzsch Hamlet*. London: Charles Tilt, 1828. (LONG 14449)
Ink, title page: "Wa. Allston"
- Tasso, Torquato. *Gerusalemme Liberata di Torquato Tasso*. London: Gio. Tomo, 1778. (LONG 14473)
Ink, title page: "Wa-Allston"

Verplanck, Gulian. *Discoveries and Addresses on Subjects of American History, Arts, and Literature*. New York: J. & J. Harper, 1833. (LONG 14477)
 Ink, inside front cover: "Washington Allston-/ from his friend/ the author"

Waller, Edmond. *Poems, & C. Written upon Several Occasions, and to Several Persons*. London: Jacob Tonson, 1712. (LONG 14368)
 Ink, inside front cover: "Wa. Allston. / S" Ink, flyleaf: "George Hune [?]"

Waterhouse, Benjamin. *Essay on Junius and his Letters Embracing a Sketch of the Life and Character of William Pitt, Earl of Chatham...* Boston: Gray and Brown. E. W. Metcalf and Company, 1831. (LONG 14445)
 Ink, title page: "Wa. Allston", front endpaper: "From the Author"

_____. *Brackett's Works*, Volume First No. 1. Boston: William Ticknor & Co., 1844. (LONG 20560)
 Inscription on detached sheet: "To Washington Allston, in [illeg] of the author's... sincere respect. Rome June 3, 1843."

Martha Remington (Dana) Allston's Library

Aikin, J. *Letters to a Young Lady, on a Course of English Poetry*. Boston: Munroe & Francis, 1806. (LONG 14489)
 Bookplate: "Martha R. Dana."

Albro, John A. *Blessedness of those who Die in the Lord. A Sermon Occasioned by the Death of Washington Allston, Delivered in the Church of the Shepard Society, Cambridge...* Boston: Charles C. Little and James Brown, 1843. (LONG 14519)
 Ink, front cover: "Mrs. Martha Allston/ with the kind regards of/ Her friend & Pastor."

Allston, Washington. *Monaldi: A Tale*. London: Edward Moxon, 1843. (LONG 14500)
 Ink, title page: "Martha R. Allston"

Allston, Washington. *Sylphs of the Seasons, with Other Poems*. London: W. Pople, 1813. (LONG 14480)
 Bookplate: "Martha R. Dana." Ink, title page: "Martha R. Dana."

Burns, Robert. *Works of Robert Burns with an Account of his Life, and a Criticism on his Writings*. Philadelphia: William Fairbairn, 1804. (LONG 14488)
 Bookplate: "Martha R. Dana."

Campbell, Thomas. *Poetical Works of Thomas Campbell, Including Several Pieces from the Original Manuscript, Never Before Published in this Country*. Baltimore: Philip H. Nicklin, 1811. (LONG 14472)
 Bookplate: "Martha R. Dana"

- Grosvenor, Benjamin. *Mourner: or, the Afflicted Relieved*. Exeter, NH: H. Ranlet, [1792]. (LONG 14474)
Ink, p. 2: "Martha Allston"
- Hawkesworth, John. *Adventurer*. London: C. Hitch, 1756. Volumes I, II, IV. LONG 14490-14492)
Bookplate: "Martha R. Dana.", ink, title page: "Martha Trowbridge"
- Lamb, Charles. *Works of Charles Lamb*. London: Edward Moxon, 1855. Volume I-IV (LONG 14484-14487)
Ink, inside front cover of each: "Martha R. Allston,/ 1860."
- Richter, Jean Paul Frederic. *Life of Jean Paul Frederic Richter. Compiled from Various Sources. Together with his Autobiography*. Boston: Charles C. Little and James Brown, 1842. Volume I-II (LONG 14482-14483)
Ink, front endpaper, Vol. I: "Mrs. Allston for/ 'auld lang syne" Pencil, front endpaper, Vol. II: "Mrs. Allston"
- Ware, William. *Lectures on the Works and Genius of Washington Allston*. Boston: Phillips, Sampson and Company, 1852. (LONG 14504)
Ink, front endpaper: "Mrs. Washington Allston / with the respects of / H. Ware. / Sept. 1852." Pencil marginalia by H.W.L. Dana on title page and endpaper.
- Wordsworth, Christopher. *Memoirs of William Wordsworth, Poet-Laureate, D.C.I.* Boston: Ticknor, Reed, and Fields, 1851. Volume I-II. (LONG 14366-14367)
Ink, front endpaper: "Martha R. Allston. / Auburn St. July 17. '51."

Works by Washington Allston

- Allston, Washington. *Lectures on Art, and Poems*. New York: Baker and Scribner, 1850. (LONG 14461)
Ink, front endpaper: "Rich H. Dana Jr.", title page: "R. H. Dana jr"
- Allston, Washington. *Lectures on Art, and Poems*. New York: Baker and Scribner, 1850. (LONG 14462)
Ink, front endpaper: "Richard H. Dana/ from his sister M. R. Allston"
- Allston, Washington. *Lectures on Art, and Poems*. New York: Baker and Scribner, 1850. (LONG 14463)
Ink, front endpaper: "Francis & Isabella Dana/ From ... M. R. Allston"
- Allston, Washington. *Lectures on Art, and Poems*. New York: Baker and Scribner, 1850. (LONG 14476)
Bookplate: GATH

Allston, Washington. *Monaldi: A Tale*. Boston: Charles C. Little and James Brown, 1841. (LONG 14363)
Ink, title page: "To Mrs Sarah Dana, / from her friend, / the Author"

Allston, Washington. *Monaldi: A Tale*. Boston: Charles C. Little and James Brown, 1841. (LONG 14364)
Ink, title page: "(W. Allston)"

Allston, Washington. *Monaldi: A Tale*. London: Edward Moxon, 1842. (LONG 14459)
Ink, inside front cover: "Richard H. Dana./ Given to me by Allston."

Allston, Washington. *Sylphs of the Seasons, with Other Poems*. Boston: Cummings and Hilliard, 1813. (LONG 14479)

Allston, *Sylphs of the Seasons, with Other Poems*. Boston: Boston: Cummings and Hilliard, 1813. (LONG 14460)
Pencil, front endpaper: "Bought by H. W. L. Dana, in March, 1940, from Morrill for \$3.00"

Reference Works Regarding Washington Allston⁴⁶⁷

Alberti, Francois. *Dictionnaire Francois-Italien Compose sur Les Dictionnaires de L'Academie de France et de la Crusa; Enrichi de Tous les Termes Propres des Sciences...* Venice : Thomas Bettinelli, 1793. Volume I-II. (LONG 14361-14362)
Vol. I: Pencil, front endpaper: "Allston ?" Ink, title page: "Kocker."
Vol. II: Pencil, front endpaper: "1793/ Allston ?" Ink, title page: "Kocker/ Schwartz"

Albro, John A. *Blessedness of those who Die in the Lord. A Sermon Occasioned by the Death of Washington Allston, Delivered in the Church of the Shepard Society, Cambridge...* Boston: Charles C. Little and James Brown, 1843. (LONG 14520)

Allibone, S. Austin. *Critical Dictionary of English Literature, and British and American Authors, Living and Deceased, from the Earliest Accounts*. Philadelphia: Childs & Peterson. Deacon & Peterson, 1858, Volume I. (LONG 14444)
Note tipped in: "Dear Sir: / I have much pleasure / ... / R. H. Dana, Esq."

American Almanac and Repository of Useful Knowledge, for the Year 1844. Boston: David H. Williams, 1843. (LONG 14365)

Chambers, E.K. *Samuel Taylor Coleridge: A Biographical Study*. Oxford: Clarendon Press, 1938. (LONG 14515)

⁴⁶⁷ This group was probably largely assembled by HWL Dana, but also includes volumes acquired by other members of the Dana family.

- Clement, Clara Erskine. *Painters, Sculptors, Architects, Engravers, and their Works. A Handbook*. New York: Hurd and Houghton, 1874. (LONG 14507)
- Dunlap, William. *History of the Rise and Progress of the Arts of Design in the United States*. Boston: C. E. Goodspeed & Co., 1918. Volume I-III. (LONG 14512-14514)
- Flagg, Jared B. *Life and Letters of Washington Allston*. New York: Charles Scribner's Sons, 1892. (LONG 14358)
Embossed, front endpaper: "H. W. L. DANA/ 105 BRATTLE STREET/ CAMBRIDGE, MASS."
- Flagg, Jared B. *Life and Letters of Washington Allston*. New York: Charles Scribner's Sons, 1892. (LONG 14359)
Ink, front endpaper: "Allston Dana/ from .../ Elizabeth Ellery Dana/ ..."
- Flagg, Jared B. *Life and Letters of Washington Allston*. New York: Charles Scribner's Sons, 1892. (LONG 14360)
Ink, front endpaper: "Mr. & Mrs. Richard H. Dana./ Christmas 1892/ from R. Charlotte Dana" Ink, pasted in: "W. Allston"
- Fogg Museum of Art. *Real and Ideal in American Art*. Cambridge: Fogg Museum of Art, 1948. (6 copies, LONG 14549-14554)
- Gibbes, Robert W. *Memoir of James de Veaux, of Charleston, S.C.: Member of the National Academy of Design, New-York*. Columbia, SC: I. C. Morgan's Letter Press Print, 1846. (LONG 14443)
Ink, front cover: "Richard H. Dana Esq. / Cambridge." Pencil: "Allston p. 55-137 / 123"
- Harding, Chester. *My Egotistigraphy*. Cambridge: John Wilson and Son, 1866. (LONG 14447)
Ink, title page: "Mrs. Dana", pencil: "pp 138-142 Allston 158", front endpaper: "S. W. Dana"
- Hennig, Helen Kohn. *Great South Carolinians from Colonial Days to the Confederate War*. Chapel Hill: University of North Carolina Press, 1940. (LONG 14465)
- Historical Sketches of the Old Painters*. Boston: Hilliard, Gray, and Company, 1841. (LONG 14510)
Pencil, front endpaper: "Compliments of / M. J. Rosenberg"
- Influence and History of the Boston Athenaeum from 1807 to 1907 with a Record of its Officers and Benefactors and a Complete List of Proprietors*. Boston: Boston Athenaeum, University Press, 1907. (LONG 14355)
- Kugler, *Handbook of Painting. The Italian Schools. Translated from the German of Kugler by a Lady*. London: John Murray, 1867. Part 1-2 (LONG 14456-14457)
Vol. I, ink, verso of flyleaf: "Ricardo Henrico Dana III^o / Schol. Sant. Pauli. / MDCCCLXIX." Vol. II, pencil, front endpaper: "R. H. Dana", pencil, 1st flyleaf: "Richard H. Dana"

- Literary Miscellany, Including Dissertations and Essays on Subjects of Literature, Science, and Morals, Biographical and Historical Sketches, Critical...* Cambridge: William Hilliard, 1805-1806. Volume I-II. (LONG 14501-14502)
Ink, front endpaper: "Richard H Dana"
- Mayo, Lawrence Shaw. *Winthrop Family in America*. Boston: Massachusetts Historical Society, 1948. (LONG 14356)
- Parkes, Kineton, ed. *Painter-Poets*. London: Walter Scott. (LONG 14509)
Ink, front endpaper: "Cinderella / from E. L. C. / December 25, 1896."
- Peabody, Elizabeth P. *Last Evening with Allston, and Other Papers*. Boston: D. Lothrop and Company, 1886. (LONG 14518)
Embossed: "H. W. L. DANA/ 105 BRATTLE STREET/ CAMBRIDGE, MASS."
- Pharo, Elizabeth B., ed. *Reminiscences of William Hasell Wilson (1811-1902)*. Philadelphia: Patterson & White Company, 1937. (LONG 14544)
- Pringle, Elizabeth W.A. *Chronicles of Chicora Wood*. New York: Charles Scribner's Sons, 1922. (LONG 14357)
- Shaffer, E.T.H. *Carolina Gardens: The History, Romance and Tradition of Many Gardens of Two States Through More than Two Centuries*. Chapel Hill: University of North Carolina Press, 1939. (LONG 14517)
- Sterns, Frank Preston. *Cambridge Sketches*. Philadelphia: J. B. Lippincott Co., 1905. (LONG 14410)
Pencil, title page: "card"
- Tuckerman, Henry T. *Artist-Life: Or Sketches of American Painters*. New York: D. Appleton & Company, 1847. (LONG 14508)
- Tytler, Sarah. *Modern Painters and their Paintings, for the Use of Schools and Learners in Art*. Boston: Roberts Brothers, 1874. (LONG 14511)
- Verplanck, Gulian C. *Essays on the Nature and Uses of the Various Evidences of Revealed Religion*. New York: Charles Wiley, 1824. (LONG 14499)
Pencil, front endpaper: "Richard H Dana/ From G. C. Verplanck"

Magazines

- American Whig Review*, Series XXXI, Number 67, July 1850. (LONG 14495)
- Atlantic Monthly, Devoted to Literature, Science, Art, and Politics*.
Volume LXXI, Number 427, May 1893 (LONG 14532)
Volume LXIV, Number 385, November 1889 (2 copies, LONG 14533, LONG 14534)
- Democratic Review*, Volume XIII, Number LXIV, October 1843. (LONG 14494)

Knickerbocker, Volume XIV, Number 2, August 1839. (LONG 14448)

Includes articles "The Allston Exhibition" by J. Huntington and "The Spanish Maid" and "Rosalie" by Washington Allston. Pencil annotations throughout.

Old and New, Volume IV, Number 6, December 1871. (LONG 14496)

Scribner's Magazine.

Volume XI, January-June 1892. (LONG 14516)

Volume XI, Number 1, January 1892 (2 copies, LONG 14535, LONG 14536)

South Carolina Historical and Genealogical Magazine.

Volume L, Number 1-4, January, April, July, October 1949. (LONG 14524-14527)

Volume LI, Number 1-4, January, April, July, October 1950. (LONG 14528-14531)

Southern Literary Messenger, Volume VIII, Number 8, August 1842. (LONG 14498)

Contains enclosures.

Southern Quarterly Review. Charleston: Burges & James, October 1843. (LONG 14446)

APPENDIX C:

WASHINGTON ALLSTON'S ARTWORK

- [Head of an Angel]. Graphite on wove paper, framed. c. 1812. (LONG 4434)
- [Edmund Trowbridge Dana]. Pastel on laid paper. c. 1797. (LONG 4435)
- [Portrait of a Man]. Charcoal and chalk on paper. n.d. #185, MFA 257 (LONG 20067)
- [Study of a Human Knee]. Crayon or charcoal and chalk on paper. n.d. #49 (LONG 20068)
- [Studies of Human Legs]. Ink and graphite on paper. n.d. #146, 212 (LONG 20069)
- [Study of a Human Leg]. Ink on paper. n.d. #104, 170 (LONG 20070)
- “Dead Man Restored” Graphite on wove paper. n.d. #87, 153 (LONG 20071)
- [Study of a Man’s Shoulder]. Graphite on paper. n.d. #77, 143 (LONG 20072)
- [Study of Groups of Figures]. Ink on paper. n.d. #116, 182 (LONG 20073)
- [Study of a Human Foot]. Graphite and ink on paper. n.d. #14, MFA 80 (LONG 20074)
- [Study of Human Legs]. Graphite and ink on paper. n.d. #20, MFA 86 (LONG 20075)
- [Study of a Human Leg]. Ink on paper. n.d. #15, MFA 81 (LONG 20076)
- [Studies of Human Legs and Figure]. Graphite and ink on paper. n.d. #17, MFA 83 (LONG 20077)
- [Study of a Human Leg]. Graphite and chalk on paper. #198, MFA 271 (LONG 20078)
- [Studies of Human Legs]. Graphite on paper. #19, Rrg. 85 (LONG 20079)
- [Portrait of a Young Woman]. Graphite and ink on paper. n.d. #187, MFA 259 (LONG 20080)
- [Studies of Groups of Figures]. Graphite and ink on paper. n.d. #169, MFA 236 (LONG 20061)
- [Studies of Figures in a Boat]. Ink and graphite on paper. n.d. (LONG 20082)
- [Studies of Groups of Figures]. Graphite on paper. n.d. #118, 184 (LONG 20083)
- “The Witch of Endor”. Ink on paper. 1850-1900. (LONG 26658)