

2019

National Trails Office - Regions 6,7,8

FY 2019 SUPERINTENDENT'S ANNUAL REPORT





Contents

Letter from the Superintendent of the National Trails – National Park Service.....	3
Acronym List.....	4
Executive Summary of Fiscal Year 2019 Accomplishments.....	6
Administration and Staffing.....	9
Organization and Purpose.....	9
Budgets/NTIR Funding for FY19 (Table 1).....	10
Staffing.....	11
Core Operations.....	12
Partnerships and Programs.....	12
NTIR Organizational Support for FY19 (Table 2).....	13
Trail Studies and Planning.....	13
National Historic Trail Administration.....	14
California National Historic Trail.....	14
El Camino Real de los Tejas National Historic Trail.....	16
El Camino Real de Tierra Adentro National Historic Trail.....	17
Mormon Pioneer National Historic Trail.....	19
Old Spanish National Historic Trail.....	21
Oregon National Historic Trail.....	22
Pony Express National Historic Trail.....	24
Santa Fe National Historic Trail.....	27
Trail of Tears National Historic Trail.....	30
National Historic Trails Project Summary.....	33
New and Completed Operation of the National Park Service (ONPS) Base-funded Projects FY 19 (Table 3).....	33
Trail Websites and Public Engagement.....	34
NTIR Website Statistics, FY19 (Table 4).....	34
NTIR Social Media Statistics, FY19 (Table 5).....	35
Volunteers-in-Parks (VIP) Program.....	35
University-Based Partnerships.....	36
Geographic Information Systems (GIS).....	38
Resource Advocacy and Protection.....	39
Route 66 Corridor Preservation Program.....	41
Route 66 Corridor Preservation Program (ROSI) Cost Share Projects, FY19 (Table 6).....	43

I'm pleased and proud to present the National Trails – National Park Service Superintendent's Report for Fiscal Year (FY) 2019, which concluded the 50th anniversary of the National Trails System Act (NTSA). In this report, you'll witness some of the tremendous contributions made by National Trails – National Park Service employees both former and current. Like these dedicated and talented people, our growing community of trail partners remains indispensable in helping to accomplish our mission.

After years of operating publicly as the National Trails Intermountain Region, an administrative reorganization affecting the entire US Department of Interior (DOI) became official in 2019, and we now refer to our office as the National Trails – National Park Service (hereafter NTIR).

Fiscal year 2019 brought some serious challenges, as well. The federal government shutdown—beginning December 22, 2018 and ending January 25, 2019—greatly affected our staff, our partnership efforts, and the projects designed to promote and protect the national historic trails (NHTs). Also, during 2019, the staff said goodbye to three employees: interpretive specialist Jeff Denny, historic architect Michael (Mike) Romero Taylor, and historian Frank Norris. Jeff, Mike, and Frank left for retirement after distinguished careers with the National Park Service (NPS).

Planning and coordination with trail partners continued to produce memorable results. In June, the office's Geographic Information System (GIS) specialists assisted the National Pony Express Association (NPEA) with its annual Re-Ride. Using a Global Positioning System (GPS) device placed inside the mochila (mailbag), trails staff collected real-time spatial data as riders traversed the country between St. Joseph, MO, and Sacramento,

CA. The data, shared online in a web map, allowed the public to follow the riders' progress. Over 20,000 views of the mapping application occurred over a period of ten days.

New interpretive waysides and orientation panels along the Santa Fe (SAFE) and Trail of Tears (TRTE) NHTs added additional links to these linear stories. In St. Joseph, MO, NTIR staff facilitated a charette, designed to engage local trail enthusiasts and the general public with possible ideas for the development of sites and stories related to the Pony Express (POEX) and California (CALI) NHTs throughout the city. Other federal agencies played valuable roles in 2019 as well, including the US Forest Service (USFS), which completed preservation plans for SAFE on the Cimarron (Kansas) and Comanche (Colorado) National Grasslands. The partnership agreements between NTIR and the University of New Mexico (UNM) continued to expose students to the national trails system, with a particular focus on NHTs, and provide opportunities for them to develop public history skills. The first two sessions of a trails course, offered in fall of 2018 and 2019, contributed valuable research on historic people and places along the NHTs.

NTIR continues to seek new audiences for the NHTs, as well as new projects and partners to help broaden our offerings. Whether in person or online, we hope to give the public a meaningful sense of the history surrounding them.

Aaron Mahr
Superintendent, National Trails

National Park Service
P.O. Box 728
Santa Fe, NM 87504
Aaron_Mahr@nps.gov,
505-988-6736



Acronym List

ADA	Americans with Disabilities Act (1990)	IAA	Interagency Agreement
ATR	Auto Tour Route	IMTA	Iowa Mormon Trails Association
AZRU	Aztec Ruins National Monument	KCAHTA	Kansas City Area Historic Trails Association
BLM	Bureau of Land Management	MOPI	Mormon Pioneer National Historic Trail
CALI	California National Historic Trail	MOA	Memorandum of Agreement
Caltrans	California Department of Transportation	MOU	Memorandum of Understanding
CARTA	El Camino Real de Tierra Adentro Trail Association	MTSU	Middle Tennessee State University (Center for Historic Preservation)
CESU	Cooperative Ecosystem Studies Unit	NHT	National Historic Trail
CLR	Cultural Landscape Report	NGPC	Nebraska Game and Parks Commission
CTTP	Connect Trails to Parks	NMDCA	New Mexico Department of Cultural Affairs
DCP	Developmental Concept Plan	NMHC	New Mexico Humanities Council
DIGIT	Digitally Integrated Geographic Information Technologies	NPEA	National Pony Express Association
DOI	US Department of Interior	NPF	National Park Foundation
DOT	Department of Transportation	NPS	National Park Service
ELCA	El Camino Real de Tierra Adentro National Historic Trail	NTIR	National Trails Intermountain Region (now National Trails – National Park Service)
ELCAT	El Camino Real de los Tejas National Historic Trail Association	NTSA	National Trails System Act
ELTE	El Camino Real de los Tejas National Historic Trail	OCTA	Oregon-California Trails Association
ESRI	Environmental Systems Research Institute	OLSP	Old Spanish National Historic Trail
FLAP	Federal Lands Access Program	ONPS	Operation of the National Park System
GIS	Geographic Information Systems	OREG	Oregon National Historic Trail
GPS	Global Positioning System	OSTA	Old Spanish Trail Association
HFC	Harpers Ferry Center	PI	Principal Investigator
HRA	Historical Research Associates, Inc.	PNTS	Partnership for the National Trails System
HSR	Historic Structures Report	POEX	Pony Express National Historic Trail

RFP	Request for Proposal		Transportation
RIM	Resources Information Management	UNM	University of New Mexico
ROSI	Route 66 Corridor Preservation Program	UNM SA&P	University of New Mexico School of Architecture & Planning
SAFE	Santa Fe National Historic Trail	USACE	US Army Corps of Engineers
SCA	Student Conservation Association	USFS	US Forest Service
SHPO	State Historic Preservation Office	USFWS	US Fish & Wildlife Service
STEDD	Southeast Tennessee Economic Development District	VIP	Volunteers-in-Parks
SFTA	Santa Fe Trail Association	WNPA	Western National Parks Association
SWBRPP	Southwest Border Resource Protection Program	WSCU	Western State Colorado University (now known as Western Colorado University)
TAMU	Texas A&M University (College Station)		
THC	Texas Historical Commission		
TOTA	Trail of Tears Association		
TRTE	Trail of Tears National Historic Trail		
TVA	Tennessee Valley Authority		
TxDOT	Texas Department of		





Executive Summary of Fiscal Year 2019 Accomplishments

Sunset Sagebrush on the
Oregon Trail

OCTOBER 1, 2018 – SEPTEMBER 30, 2019

The sections that follow enumerate a considerable number of trail-specific accomplishments. This executive summary includes a sampling of significant staff accomplishments that have influenced most or all of the trails that NTIR administers.

- The year 2019 was one of change and challenge. The longest federal government shutdown in history interrupted NTIR operations for over a month. Three valuable employees retired, prompting searches for their replacements. An administrative reorganization within the DOI changed the office's name, but not the mission.
- Partnering remains one of the office's biggest priorities. NTIR staff continued to work with a variety of partners to commemorate the 50th



anniversary of the NTSA. Additionally, during FY19, NTIR entered into thirteen new partnership certification agreements with non-federal property owners. Four of these took place along the Old Spanish NHT (OLSP); four along TRTE; one apiece along CALI and the Oregon NHT (OREG); and one along SAFE. One additional property in the Kansas City, MO, area was already a certified site but was certified for two additional trails. As of September 2019, work continued on certification agreements along TRTE in Missouri, OLSP in New Mexico, and various sites along the Mormon Pioneer NHT (MOPI).

- Signage along the trails remained another important ongoing effort. The office supported staff and interns working on over fifty sign plans for all nine NHTs, purchasing signs for thirty different projects, spending allocated sign funds, and resolving issues as they arose. NTIR received official sign standard guidance from the Federal Highway Administration Traffic Control Device team in August 2019; staff subsequently mocked up new sign standards for Departments of Transportation (DOTs) and trail association use. Staff worked with the California Department of Transportation (Caltrans), NPS-Denver Service Center, and NTIR leadership to revise the existing Memorandum of Agreement (MOA) between Caltrans and the NPS to respond to questions raised by several Caltrans districts and to facilitate an extension to allow for more implementation time; as of the end



of FY19, two of four affected Caltrans districts had signed. Student Conservation Association (SCA) sign-planning intern Madison Vandersee left in late May 2019, but another SCA intern—Emily Troil—arrived in August to continue helping with signing efforts.

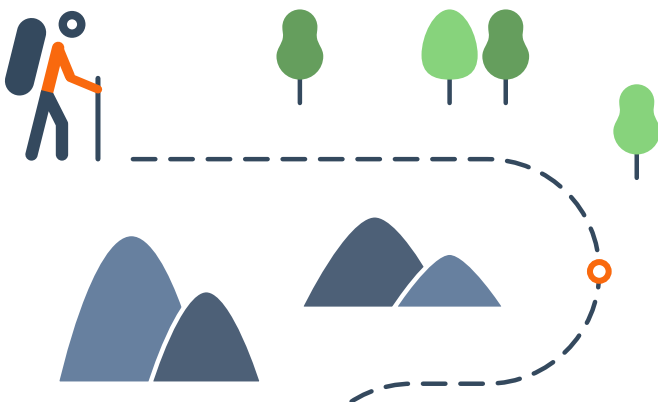
- The NTIR office continues to interface with the general public in myriad ways. Staff continued to monitor over 200 Passport to Your National Park sites along the NHTs; visitors often travel out of their way just to get one of these official stamps. The Auto Tour Route (ATR) guides for Wyoming and Nebraska, which help many visitors retrace NHTs in their own cars, also received minor updates (and subsequent reprinting). NTIR staff continued to overhaul the office’s web presence with work on over 600 unique web pages; and the office’s new digital media champion, Emily Hoerner, worked with NTIR historians and cultural resource specialists to provide Facebook, Twitter, and Instagram content for all nine NHTs. The American Solar Challenge, a biannual rally pitting solar-powered vehicles designed by various university teams against one another, remains

an important trail-related event. Planning for the next event in 2020 began in 2019, including efforts to develop a new route more closely aligned with OREG.

- NTIR personnel continued to share their expertise with larger audiences. One staff member presented a paper at the International Council on Monuments and Sites conference in San Francisco, CA; the topic was “culturenature”—views, landforms, vegetation, sounds, and smells—in historic trails settings. Employees also presented signing and orientation strategies to the Mid-America Regional Council and the City of Independence, MO. In late October 2018, two staff members presented a paper on the history of long-distance trail administration in Vancouver, WA, at the Partnership for the National Trails System (PNTS) meeting; this gathering served as the culmination of the NTSA’s 50th anniversary activities. A staff historian completed the first thorough draft of the office’s administrative history in summer 2019. As part of an issue on travel, Edible New Mexico published a staff member’s article on the Negro Motorist Green Book—a

publication that helped midcentury African Americans identify safe places to eat, sleep, and visit along highways like Route 66. Lastly, in collaboration with the Lewis and Clark NHT, staff personnel presented the keynote address at the 2019 Missouri Preservation Conference in St. Joseph, MO.

- The second iteration of the trails course at UNM began in August 2019. Under the tutelage of Dr. Fred Gibbs, students were slated to study the NHTs in general, as well as complete individual research projects on historic sites along SAFE. Also beginning in August, one UNM history graduate student began writing a series of thematic SAFE-related essays as part of a three-year shared internship project through a Cooperative Ecosystem Studies Unit (CESU) agreement.
- NTIR personnel finalized a nomination process for identifying high potential historic sites and segments. With help from the Santa Fe Trail Association (SFTA), the office plans to begin field testing the protocol during FY 2020. Identifying and protecting high potential sites and segments is a key responsibility entrusted to trail administrators by the NTSA.
- NTIR staff remains committed to safety. In FY19, the NTIR Safety Plan was updated, and at each monthly staff meeting a different employee gave a safety presentation on their topic of choice. As in previous years, FY19 saw a lack of work-related lost-time injuries.



SECTION TWO



Administration and Staffing

Scotts Bluff National Monument
in Nebraska, Oregon NHT

NTIR administers nine national historic trails and a historic corridor preservation program. In addition, it has been charged with leading two trail feasibility studies and preparing for one foundation document.

ORGANIZATION AND PURPOSE

Staff in Santa Fe, NM, with branch offices in Salt Lake City, UT, and Albuquerque, NM, administer the following NHTs: California, El Camino Real de Tierra Adentro, El Camino Real de los Tejas, Mormon Pioneer, Old Spanish, Oregon, Pony Express, Santa Fe, and Trail of Tears. In addition, NTIR staff administers the Route 66 Corridor Preservation Program (ROSI). El Camino Real de Tierra Adentro and Old Spanish NHTs are co-administered with the Bureau of Land Management (BLM).



BUDGETS

In FY19, NTIR received \$3,563,700 in the Operations of the National Park Service (ONPS) funding. In addition, the office received \$649,395.51 for planning, projects, and miscellaneous items. See Table 1 for funding details.

TABLE 1. NTIR Funding for FY 2019.

Funding Source	Trail or Program	Received
ONPS	Santa Fe National Historic Trail	\$750,200
	Trail of Tears National Historic Trail	\$490,000
	Oregon National Historic Trail	\$433,600
	California National Historic Trail	\$347,500
	Route 66 Corridor Preservation Program	\$288,100
	El Camino Real de Tierra Adentro National Historic Trail	\$288,100
	Pony Express National Historic Trail	\$249,500
	Mormon Pioneer National Historic Trail	\$242,500
	Old Spanish National Historic Trail	\$242,500
	El Camino Real de los Tejas National Historic Trail	\$198,000
	Masau Trail	\$33,700
	Total ONPS Funding	\$3,563,700
Project Funding & Other Fund Resources	Volunteers-In-Parks (VIP) Funding	\$35,506
	Salt Lake City Office Expenses	\$8,000
	Connect Trails to Parks (CTTP) – TRTE Water Route, AR	\$10,400
	CTTP – Ash Hollow State Park, NE (CALI, OREG, MOPI, POEX)	\$31,700
	CTTP – Historic Oregon Trail Interpretive Center (OREG)	\$39,500
	CTTP – Visitor Use Experience Web Maps	\$76,000
	Southwest Border Resource Protection Program (SWBRPP) ELTE Indigenous Research Project	\$35,010
	Four Trails Study (CALI, MOPI, OREG, POEX)	\$10,000
	ELCA BLM Interpretive Plan Support	\$21,968.39
	PNTS Grant towards Signing and Partnerships Intern (SAFE, TRTE)	\$20,000
	Caltrans MOA (CALI, POEX)	\$286,229.63
	Donations	\$12,081.49
	Permanent Change of Station Funding	\$10,000
	Additional Regional Support	\$53,000
	Total Project Funding & Other Fund Sources	\$649,395.51
Total Funding From All Sources	\$4,213,095.1	

STAFFING CHANGES

Aaron Mahr, superintendent (on detail to Chesapeake Bay Office as interim superintendent, February 2019—June 2019)

John Cannella, deputy superintendent (NTIR acting superintendent, February 2019—June 2019)

Emily Hoerner, digital media champion, joined the staff in September 2019

Jeff Denny, interpretive specialist, retired at the end of August 2019

Frank Norris, historian, retired at the end of August 2019

Mike Romero Taylor, historic architect, retired at the end of February 2019

INTERNS AND CONTRACTORS

Emily Troil, SCA intern, started work in early August 2019

Jesse Ercolani, UNM intern, started work in August 2019

Madison Vandersee, SCA intern, worked from October 2018 to May 2019

Roxy Sanchez, administrative assistant (contractor), began work in September 2019

Diane Weddington, SCA intern, completed her internship in October 2018



The Humboldt River flowing through Carlin Canyon, NV, along the California NHT

SECTION THREE



Core Operations

Fort Union National Monument
along the Santa Fe NHT near
Tiptonville, NM

PARTNERSHIPS AND PROGRAMS

With the exception of the MOPI and ELCA, each national historic trail has a primary partner association that actively works with NTIR staff to support trail-related research, interpretation, and development, as well as promoting public interest and heritage tourism. NTIR provides limited financial assistance to these organizations from its base ONPS funding. Table 2 identifies the financial assistance that NTIR provided to trail organizations in FY19.

TABLE 2. NTIR Association Support for FY 2019

Trail Association	Funding Provided
Trail of Tears Association (TOTA); for the Trail of Tears National Historic Trail (TRTE)	\$149,135
Santa Fe Trail Association (SFTA); for the Santa Fe National Historic Trail (SAFE)	\$151,327
Oregon-California Trails Association (OCTA); for the Oregon and California national historic trails (OREG/CALI)	\$133,000
Old Spanish Trail Association (OSTA); for the Old Spanish National Historic Trail (OLSP)	\$82,500
El Camino Real de los Tejas National Historic Trail Association (ELCAT); for El Camino Real de los Tejas National Historic Trail (ELTE)	\$75,050
National Pony Express Association (NPEA); for Pony Express National Historic Trail (POEX)	\$59,520
Total	\$650,532

TRAIL STUDIES AND PLANNING

For the last several years, NTIR has been conducting two feasibility studies and a special resource study in response to provisions in the 2009 Omnibus Public Lands Management Act. In 2019, NTIR’s GIS specialists made alignments for the proposed Chisholm and Great Western Trail and the Butterfield Overland Trail available to the public; they are now available for download on Integrated Resource Management Applications and Environmental Systems Research Institute (ESRI) ArcGIS Online (along with their metadata). The feasibility study for the proposed Zebulon Pike NHT was also authorized in 2019. The Revised Feasibility and Suitability Study for Additional Routes of the Oregon, Mormon Pioneer, California, and Pony Express National Historic Trails was transmitted to the regional director in 2018 and will be transmitted to Congress in early 2020.



Mantle Rock Preserve, on the Trail of Tears NHT outside of Joy, KY

SECTION FOUR



Trail Administration

Chimney Rock National Historic Site, NE, the most famous landmark on the Oregon NHT for early settlers and pioneers

CALIFORNIA NATIONAL HISTORIC TRAIL (CALI)

Congress authorized CALI in 1992. Spurred by James Marshall's gold discovery in early 1848, the trail witnessed the passage of hundreds of thousands of westering emigrants during the 1840s, 1850s, and 1860s. The trail's many routes followed a broad corridor (which narrowed as it headed west) from the Missouri River to southwestern Wyoming. Farther west, in Nevada, the various routes split and led over several Sierra Nevada passes into California's Central Valley. Along many portions of CALI, from the Missouri River all the way to California, the trail is shared with the MOPI, OREG, and POEX, with some projects affecting multiple trails; as a result, some projects may be not be listed here but are instead described under an overlapping trail. For more information, visit the following website: <https://www.nps.gov/cali>.



OCTA and NTIR staff visiting Courthouse Square in Independence, MO

KEY PARTNERS/COOPERATORS:

Oregon-California Trails Association and its chapters (OCTA), Bureau of Land Management (BLM), Nebraska Game and Parks Commission (NGPC), and the California Department of Transportation (Caltrans).

KEY ACHIEVEMENTS:

- NTIR staff entered into a new cooperative agreement with NGPC to support future activities on NHTs in NE, and funded a task agreement to support trail marking, interpretation, and trail development at Ash Hollow State Park on CALI and OREG. Some funding for activities was provided through the NPS CTTP program.
- NTIR staff presented at the OCTA board meeting and general membership meeting in Santa Fe, NM, in September. Additionally, staff created two OREG/CALI newsletters for OCTA board meetings.
- NTIR personnel revised the existing Caltrans MOA, slated to expire in December 2020, to address significant Caltrans questions and to extend the project implementation timeframe. The revised agreement was

submitted to Caltrans for signature in the summer of FY19. The NPS Denver Service Center assisted NTIR staff with the Caltrans MOA revision process.

- NTIR staff conducted charette planning for CALI and POEX projects in St. Joseph, MO, which included preparing agenda and workshop materials and compiling stakeholder pre- and post- charette input. Staff developed the first version of accessibility-ready InDesign template with charette team and completed the draft document in September 2019.
- NTIR awarded a contract to the 106Group for eight waysides in the Kansas City, MO, metropolitan area. The wayside contract will continue throughout FY20.
- NTIR staff visited resources and met with partners at several key resources along CALI between Independence, MO, and Rock Springs, WY. Resources visited include several sites in the Independence/ Kansas City area, Alcove Springs, Archway Monument, Ash Hollow State Park, Chimney Rock and Scotts Bluff National Monuments, Guernsey Ruts and Register Rock, Fort Laramie National Historic Site, Devil’s Gate, South Pass, and the BLM National Historic Trail Interpretive Center in Casper, WY. These trips familiarized NTIR staff with important NHT resources, helped us to assess site needs and develop ideas for potential partnership projects, and allowed us to meet with trail partners in the field to discuss work and opportunities.

EL CAMINO REAL DE LOS TEJAS NATIONAL HISTORIC TRAIL (ELTE)

During the Spanish colonial era, ELTE—authorized in 2004—was a “royal road” that provided an overland route from Mexico and across the Río Grande to various missions, Tribal communities, and land grants across the Spanish province of Texas. It terminated at Los Adaes in what now is western Louisiana. For more information, visit the following website: <https://www.nps.gov/elte>.

KEY PARTNERS/COOPERATORS:

El Camino Real de los Tejas NHT Association (ELCAT), Texas Department of Transportation (TxDOT), Texas Historical Commission (THC), Texas A&M University-College Station (TAMU), Gulf Coast Cooperative Ecosystem Studies Unit (Gulf Coast CESU), and the Southwest Border Resource Protection Program (SWBRPP).

KEY ACHIEVEMENTS:

- The Keeper of the National Register of Historic Places signed listings in TX on May 30, 2019, for Comal Springs at New Braunfels; wagon swale at Mission Tejas State Park, Grapeland; and Onion Creek Crossing at McKinney Falls State Park, Austin.
- NTIR awarded a contract to the 106Group for waysides and two orientation panels at three sites along the trail in TX (Rio Grande Overlook, Apache Pass, Mission Dolores State Historic Site) and one in LA (Los Adaes State Historic Site). Site planning and visits will begin in winter 2020.

- Staff attended ELCAT board meeting in Austin, TX, and presented updates on NPS ELTE activities.
- Staff met with TxDOT, THC, and ELCAT to discuss enhancements to the existing process for all organizations to work together more efficiently on sign planning and trail marking.
- In February, trail administration was notified its proposal to the SWBRPP for historical research about indigenous tribes in southwest TX was funded; it is administered through the Gulf Coast CESU. Dr. Armando Alonzo (TAMU) was selected as the principal investigator (PI), and the project began in August.



Ruins of old church in San Juan Capistrano mission



El Camino Real de los Tejas National Historic Trail

EL CAMINO REAL DE TIERRA ADENTRO NATIONAL HISTORIC TRAIL (ELCA)

ELCA is one of the oldest roads in the US and was authorized as a national historic trail in 2000. It is a timeless route of trade and cultural exchange and interaction among Spaniards and other Europeans, American Indians, Mexicans, Blacks, and Americans. This internationally significant trail is co-administered by BLM and NPS. For more information, visit the following website: <https://www.nps.gov/elca>.

KEY PARTNERS/COOPERATORS:

El Paso County, University of New Mexico School of Architecture and Planning (UNM SA&P), Paleo Southwest, City of Albuquerque, Bernalillo County, New Mexico Humanities Council (NMHC), Gutiérrez-Hubbell House, New Mexico Department of Cultural Affairs (NMDCA), Texas Historical Commission (THC), National Park Foundation (NPF), and the Federal Lands Access Program (FLAP).

KEY ACHIEVEMENTS:

- NTIR staff provided technical assistance to El Paso County's project coordinator in the development of a proposal for additional funding from the SWBRPP concerning the Oñate Crossing historic site in El Paso, TX, including draft reviews and conference calls; staff also assisted UNM SA&P with a similar funding request. Staff provided input on the scope of work for El Paso County's Request for Proposals (RFP) for Phase 2 of the Oñate Crossing Historic Structures Report (HSR)/



NTIR historian Frank Norris and SCA intern Diane Weddington staff the NTIR booth at the Gutiérrez-Hubbell House's Trade Fair in late October 2018 in Albuquerque, NM

- Cultural Landscape Report (CLR); El Paso County selected Paleo Southwest consulting firm to undertake Phase 2. This next stage builds on the successful completion of Phase 1 in September 2018, in which AmaTerra Environmental, Inc. completed a cultural landscape history of the Oñate Crossing historic site. SWBRPP funded both projects.
- NTIR staff and other partners attended the Camino Real Trade Fair at the Gutiérrez-Hubbell House, in Albuquerque, NM, in October as part of the NTSA's 50th anniversary celebration. In addition to ELCA materials and a Junior Ranger activity, they displayed an international map made possible by funds from the NPF and assistance from Bernalillo County and Ellen Dornan of the NMHC.



Native plants seen at the Sevilleta National Wildlife Refuge Visitor Center

- NTIR staff participated in a July 10 meeting with the president and secretary of El Camino Real de Tierra Adentro Trail Association (CARTA), who presented updates on CARTA activities and their new strategic plan.
- NTIR obligated CTFP funding through Cooperative and Task Agreements for the ELCA Development Concept Plan (DCP) in Bernalillo County, NM. Staff also attended planning meetings and helped develop and review contract statement of work for Bernalillo County RFP that will provide a vision for the preservation and development for public use and retracement of ELCA in Bernalillo County. In addition to Bernalillo County, key partners include the City of Albuquerque and UNM.
- NTIR awarded a contract to Conservation by Design for an interpretive plan, jointly funded by BLM and NPS and supported by THC and NMDCA. BLM funds were transferred to NPS for the planning project through an Interagency Agreement (IAA). NTIR entered into a MOU with NMDCA, THC, BLM, and NPS regarding collaboration on interpretation of ELCA.
- NTIR staff participated in a dedication event for the opening of the newly developed trail on 2nd Street, in Albuquerque, NM, which follows the historic alignment of ELCA. NTIR staff had extensive involvement in this project from its conception to its completion, reviewing construction drawings, and working with the FLAP contractor and Bernalillo County to create a NHT sign plan to mark the trail along 2nd Street.
- NTIR personnel met with BLM staff along the Jornada del Muerto in NM regarding additional opportunities for development and interpretation. Work will be done by a Spaceport America contractor using mitigation funds, and NTIR personnel will serve in a review role.

MORMON PIONEER NATIONAL HISTORIC TRAIL

MOPI, which Congress authorized in 1978, commemorates The Church of Jesus Christ of Latter-day Saints who left Nauvoo, IL, in 1846 and continued on to the Great Salt Lake Valley the following year. Along many portions of the trail—from the Missouri River all the way to Utah—the trail is shared with CALI, OREG, and POEX. For more information, visit the following website: <https://www.nps.gov/mopi>.

KEY PARTNERS/COOPERATORS:

Iowa Mormon Trails Association (IMTA), The Church of Jesus Christ of Latter-day Saints' Historic Sites Division, Wyoming State Parks, Bureau of Land Management (BLM), and the Nebraska State Historic Preservation Office (Nebraska SHPO).

KEY ACHIEVEMENTS:

- NTIR staff facilitated a two-day interpretive and site development planning meeting at the Devil's Gate/Rattlesnake Pass and Mormon Handcart Historic Sites, hosted by The Church of Jesus Christ of Latter-day Saints' Historic Sites Division and included Wyoming State Parks and BLM staff, and NPEA and OCTA volunteers. Following the workshop, NTIR staff prepared a concept document based on content developed and notes taken during the meeting and shared them with all participants.

- NTIR awarded a contract to the 106Group for development of eight interpretive waysides and two orientation panels to enhance visitor experiences along the trail across IA. Planning and development are scheduled to occur in FY20.
- In October 2018, NTIR staff helped dedicate the newly certified partnership with non-federal landowners at Richardson's Point site (IA) and its new entrance sign installed by IMTA.



Statue of the Handcart Pioneers, Salt Lake City, UT



Fort Laramie National Historic Site, along the Mormon Pioneer NHT near Fort Laramie, WY



Landowner Brad Klodt at new site sign for Richardson's Point, IA, along the Mormon Pioneer NHT

- Two IMTA members re-drove the entire MOPI auto tour route across IA in early 2019 to check site conditions and verify driving directions in NTIR's ATR guide. With the information they provided, NTIR staff revised

and updated the ATR guide for MOPI across IA for reprinting.

- Staff visited resources and met with partners at key sites along MOPI across IA, NE, and WY. Resources visited include Richardson's Point, Archway Monument, Sand Hill Ruts interpretive pullout, Independence Rock, Devil's Gate, Martin's Cove, South Pass, and the BLM National Historic Trail Interpretive Center in Casper, WY. Staff also met with the Nebraska SHPO. These trips familiarize NTIR staff with important NHT resources, help us to assess site needs and develop ideas for potential partnership projects, and to meet with trail partners in the field to discuss work and opportunities.



Fort Bridger, WY, on the Mormon Pioneer NHT

OLD SPANISH NATIONAL HISTORIC TRAIL (OLSP)

BLM and NPS jointly administer this historic trade route, which was active between Santa Fe and Los Angeles during the period from 1829 to 1848. Congress authorized OLSP in 2002. For more information, visit the following website: <https://www.nps.gov/olsp>.

KEY PARTNERS/COOPERATORS:

Old Spanish Trail Association (OSTA), Aztec Ruins National Monument (AZRU), Kit Carson Home, Museum of the West, Mission San Gabriel Archangel, and the Moab Museum.

KEY ACHIEVEMENTS:

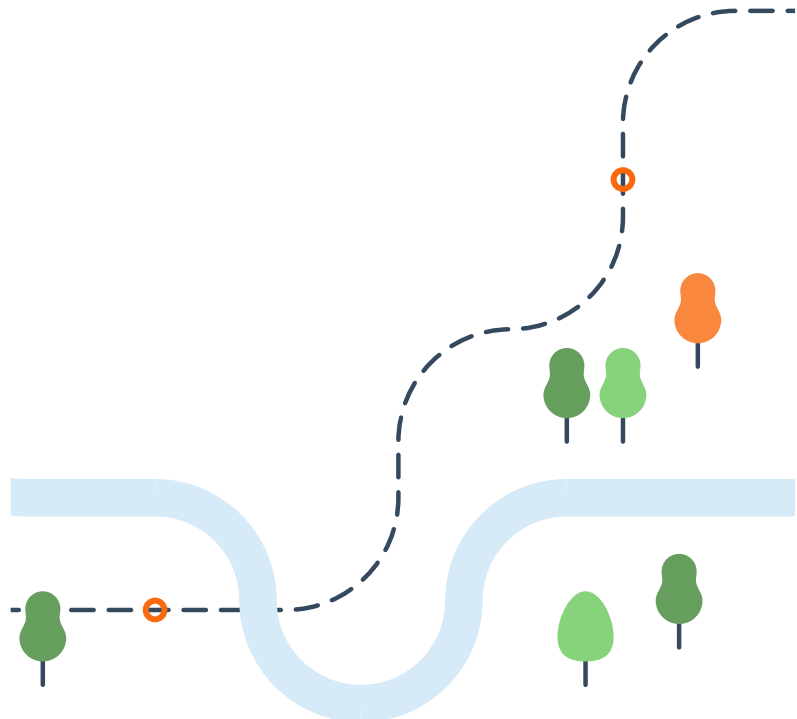
- NTIR staff participated in a meeting with OSTA partners, heritage area staff, and other federal partners in the San Luis Valley, CO, to begin discussions on a conceptual planning effort for the OLSP in that region.
- NTIR staff worked with BLM staff to create interpretive wayside and orientation panel templates that meet joint interpretive standards for use along the trail.
- NTIR personnel were invited to participate in a public event at Aztec Ruins National Monument in Aztec, NM. Staff presented a lesson on OLSP to over 600 4th and 5th graders as well as to community members over a two-day period.
- NTIR staff completed two youth projects: created the first OLSP Junior Ranger worksheet and converted an existing OSTA tabletop game (painted on a large wooden door) to digital file printed on fabric,



The Old Spanish NHT outside of Blue Diamond, NV

making it easier to transport and use at events. Also, staff recommended needed materials and guidance to OSTA for testing the game.

- NTIR staff completed partnership certifications for four OLSP properties: the Kit Carson Home in Taos, NM; the Museum of the West in Grand Junction, CO; Mission San Gabriel Archangel, CA; and the Moab Museum, UT.





NTIR Staff on BLM's Birch Creek segment of the Oregon Trail near Huntington, OR

OREGON NATIONAL HISTORIC TRAIL (OREG)

Congress authorized OREG in 1978. This iconic trail, which runs between Missouri and Oregon, witnessed the passage of hundreds of thousands of westering emigrants during the 1840s, 1850s, and 1860s. Much of the trail—from the Missouri River all the way to Idaho—is shared with CALI, MOPI, and POEX. For more information, visit the following website: <https://www.nps.gov/oreg>.

KEY PARTNERS/COOPERATORS:

Oregon-California Trails Association and its chapters (OCTA), Historical Research Associates, Inc. (HRA), Confederated Tribes of the Grand Ronde, Confederated Tribes of Siletz Indians, Confederated Tribes of the Umatilla Indian Reservation, Confederated Tribes of Warm Springs, Nez Perce Tribe, Oregon State Parks, US Forest Service (USFS), Bureau of Land Management (BLM), the Missouri Alliance for Historic Preservation, Nebraska

Game and Parks Commission (NGPC), and the Lewis and Clark NHT.

KEY ACHIEVEMENTS:

- NTIR staff initiated a new project with contracting firm HRA to complete a study of the Columbia River Gorge's role in emigration to the Willamette Valley during the Oregon Trail's migration period (1840 to 1869).
- In August and September, staff met with Tribal representatives from the Confederated Tribes of Grand Ronde, Confederated Tribes of Siletz Indians, Confederated Tribes of the Umatilla Indian Reservation, Confederated Tribes of Warm Springs, and the Nez Perce Tribe, to introduce NTIR's developing ATR guide for OREG and the Applegate Trail of CALI across OR and to learn about Tribal perspectives of emigration to OR. During these trips, staff also met with Oregon

State Parks, USFS personnel and local landowners at Blue Mountain Crossing Interpretive Site, Emigrant Springs State Park, Deadman Pass, Keeney Pass, and Nez Perce National Historic Site, and with BLM at Keeney Pass and Birch Creek, OR.

- NTIR entered into an IAA with BLM at the National Historic Oregon Trail Interpretive Center in Baker City, OR, to revise the Tribal exhibits in the Center with support through NPS CTTTP funding.
- Staff delivered the keynote address during the 2019 Missouri Alliance for Historic Preservation Conference in St. Joseph, MO. The presentation, entitled “National



NTIR Chief of Interpretation Carole Wendler© and Oregon State Parks personnel evaluate undocumented Oregon Trail trace near Emigrant Springs State Park, OR



Independence Rock in Wyoming was a famous landmark on the Mormon Pioneer and Oregon NHTs

Historic Trails: Connecting People and Places Through Preservation,” was done in collaboration with Lewis and Clark NHT.

- NTIR staff identified and visited potential starting points for the American Solar Challenge. Changed 2018 route to one that aligns more closely with OREG. Staff also planned/participated in monthly planning phone calls and established Independence Square, Independence, MO, as the starting point for the event.
- Staff worked on a number of other NTIR projects that dealt with both OREG and other overland trails. The following projects are described in more detail in the earlier section “California National Historic Trail.”
 - » Entered into a new cooperative agreement with NGPC
 - » Presented at the OCTA meeting in Santa Fe, NM, in September
 - » Contracted with 106Group for eight waysides around Kansas City, MO
 - » Visited sites and met with key partners between Independence, MO, and Rock Springs, WY



NTIR GIS Specialist Brian Deaton presenting at the 2019 ESRI User Conference map gallery concerning NTIR’s near real-time mapping of the Pony Express re-ride

PONY EXPRESS NATIONAL HISTORIC TRAIL (POEX)

Congress authorized POEX in 1992. The route connects St. Joseph, MO, to Sacramento and San Francisco, CA. Along many portions of the trail—from the Missouri River all the way to California—the trail is shared with CALI, MOPI, and OREG. The Pony Express rider and his galloping horse have become one of the mythic icons of the American West. The Pony Express, as an enterprise, lasted just 19 months during 1860 and 1861, but its fame endures. Many Pony Express enthusiasts enjoy re-creating the thrill of this cross-country ride by participating in the annual re-ride along the route. For more information, visit the following website: <https://www.nps.gov/poex>.

KEY PARTNERS/COOPERATORS: National Pony Express Association (NPEA), Environmental Systems Research Institute (ESRI), National Park Foundation (NPF), Marysville Pony

Express Home Station No. 1, Bureau of Land Management (BLM), US Fish and Wildlife Service (USFWS), US Forest Service (USFS), Douglas County (NV) Board of Commissioners, and the California Department of Transportation (Caltrans).

KEY ACHIEVEMENTS:

- NTIR staff presented at the 2019 ESRI User Conference map gallery showcasing NTIR’s use of innovative technology to collaborate with trail partners on the Pony Express Re-Ride. This event is attended by over 17,000 people and expanded NTIR’s outreach to the GIS professional community.
- NTIR staff provided background information on Pony Express station locations near Julesburg, CO, and in CA’s Sierra Nevada foothills to NPEA chapter presidents.

- Staff assisted the NPEA with its iconic annual Re-Ride in June 2019, which took riders from St. Joseph, MO, west to Sacramento, CA. NTIR staff collected near real-time GPS locations from the riders. The data was put onto a web map application and posted on the partner’s website, where it was viewed by thousands of people.
- With NPS technical support and a NPF Grant for \$45,000, the board of directors for Marysville Pony Express Home Station No. 1 completed roof stabilization and began planning for other mortar repointing, a parking concept plan, and a sign plan for the historic Pony Express Barn in Marysville, KS.
- Staff visited trail resources and met with partners at key sites along POEX between Salt Lake City, UT, and Sacramento, CA, in August 2019. The team traveled with BLM trails managers across western UT, with stops at Lookout Pass, Simpson Station, and Dugway Station, and also met with BLM at the Hickison Petroglyphs Site and Fort Churchill State Park in NV. They followed backcountry roads for most of the route across UT and NV; the USFWS provided bunkhouse accommodations at Fish Springs and Ruby Valley National Wildlife Refuges. Other stops in NV included Sand Springs Station and Cold Springs Station. In CA



Measuring interior of the Marysville Home Station No. 1 historic barn for roof stabilization



NTIR Staff exploring the Pony Express NHT at Monitor Valley, NV

the team visited Coloma Gold Discovery State Park, Sutter’s Fort, and Old Town Sacramento, key sites on CALI. In a separate trip, staffers also visited resources and met with partners between St. Joseph, MO, and Rock Springs, WY. Stops included the Pony Express Museum, Patee House Museum, Marysville Pony Express Home Station, Hollenberg Pony Express Station, and Fort Laramie National Historic Site, as well as other locations along the corridor.

- Staff communicated with USFS regarding the IAA for Brockliss Bridge in CA.
- Staff attended the Douglas County, NV,



Sand Springs Pony Express Station ruins near Fallon, NV

Board of Commissioners meeting in November 2018 and supported Douglas County personnel in its presentation to the board. The final Kingsbury Grade document was approved unanimously by the Board; the document was finalized, thus completing this phase of NTIR’s involvement in the project.

- NTIR staff completed a number of other NTIR projects in 2019 that dealt with both POEX and other overland trails. The following projects are described in more detail in the earlier section “California National Historic Trail.”
 - » Revised the existing MOA with Caltrans, slated to expire in December 2020
 - » Conducted charette planning for CALI/ POEX projects in St. Joseph, MO



Sculpture of Orrin Porter Rockwell along the Pony Express NHT at Draper, UT



Courtyard along the Santa Fe NHT, Santa Fe, NM

SANTA FE NATIONAL HISTORIC TRAIL (SAFE)

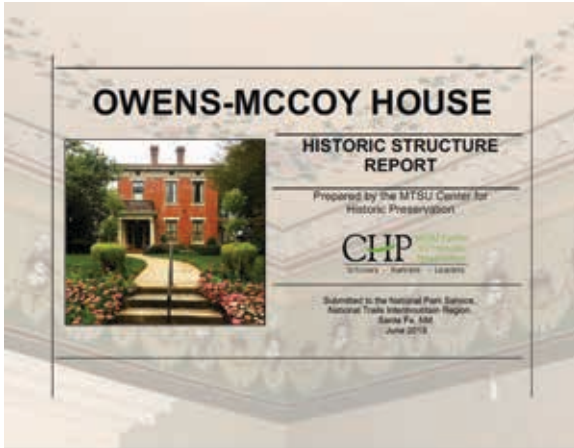
Between 1821 and 1880, the Santa Fe Trail was primarily a commercial highway linking various Missouri River communities with New Mexico. Today, this trail contains a diverse array of urban and rural landscapes and enjoys the support of an active nonprofit partner. Congress authorized SAFE in 1987. Portions of the trail in eastern Kansas and western Missouri are shared with CALI and OREG, while in Santa Fe, SAFE meets ELCA and OLSP. For more information, visit the following website: <https://www.nps.gov/safe>.

KEY PARTNERS/COOPERATORS:

Santa Fe Trail Association and its chapters (SFTA), Fort Osage National Historic Landmark, Middle Tennessee State University (MTSU), US Forest Service (USFS), Henley Company, Morton County Museum, Owens-McCoy House, and the University of New Mexico (UNM).

KEY ACHIEVEMENTS:

- NTIR staff provided historical assistance regarding a SAFE site at Fort Dodge, KS, and a trail segment near Willow Springs, KS.
- NTIR continued its partnership with UNM on the national historic trails course and a student internship. Both initiatives included SAFE-related research (see sections “University-Based Partnerships” and “Letter from the Superintendent” for more information).
- NTIR staff finalized a plan and guidelines for developing a review process for high potential historic sites and high potential route segments, with the goal of field testing the protocol with the help of volunteers from the SFTA in FY20. This is an important step toward systematizing a key responsibility of NHT administration.
- Staff consulted with Fort Osage National Historic Landmark’s site administrator about possible collaborations with the NPS.
- NTIR staff worked with MTSU to review the recently completed survey of SAFE buildings in Missouri.
- Staff moved forward with SAFE alignment decisions that resulted from three SFTA



The final Historic Structures Report for the Owens-McCoy House on the Santa Fe NHT

workshops, held in 2013 thru 2015.

- In May, staff received SFTA partner Dr. Michael Olsen's completed study, "Hell On Wheels' - Towns Along The Santa Fe Trail." This study provides an informative and entertaining series of write-ups of the three railroads and twelve railheads, or "end-of-the-track" towns, along them to assist in trail interpretation.
- NTIR initiated development of the SAFE Foundation Document, with multiple planning workshops scheduled for FY20.
- Staff received and accepted the MTSU Center for Historic Preservation's HSR for the Owens-McCoy House, a certified site on SAFE in Independence, MO.
- NTIR received and accepted USFS preservation plans for SAFE on the Cimarron National Grasslands in KS and the Comanche National Grasslands in CO, and documentation of a segment of the trail on the Cimarron National Grassland.
- NTIR staff finalized a wayside contract with Henley Co., and facilitated fabrication of wayside exhibits for privately-owned sites Camp Grierson, Swanson's Swales, Fry's Ruts, and the Stone Corral, with financial support for fabrication and bases provided by SFTA.
- Staff worked with SFTA partner Roger Boyd to design a small conceptual site plan for the Black Jack Ruts site (Boyd Prairie Preserve) in KS that includes: a sustainable trail system following the historic route of SAFE; a new trailhead with orientation; site elements to protect the historic trail ruts from further degradation; and a new trail to an overlook of the ruts that is compliant with the Americans with Disabilities Act (ADA). Staff traveled to Lawrence, KS, to present the concept plan to stakeholders in July 2019. Stakeholders included representatives from: Douglas County, Freedom's Frontier Heritage Area staff, Kansas DOT, Douglas County Historical Society, SFTA members, and others. The plan was well received, and partners are currently focusing their efforts on applying for a county grant to fund the site development. Interpretation at the site will follow in FY 2021.
- NTIR staff presented at the SFTA board meeting in Las Vegas, NM, and at the general membership meeting in St. Louis, MO. Staff created two SAFE newsletters for these board meetings.
- Staff traveled to Council Grove, KS, in June

2019 and prepared a presentation for a meeting with various county representatives and other project stakeholders to discuss and get concurrence for the Burlingame to Council Grove concept plan. Staff revised and finalized the Burlingame to Council Grove Retracement Trail Document and submitted it to SFTA in July 2019. Staff also attended the Rock Creek Crossing dedication event in uniform.

- Staff hired detailer to complete accessibility requirements for the SAFE OnCell Media Tour, rewrite text for appropriate length and cultural sensitivity, and identify missing elements. Staff also presented SFTA membership with tasks for their review—namely, driving the route and testing the tour.
- Staff participated in finalizing Cimarron

Grasslands waysides, produced by USFS under an IAA with CTPP funding.

Staff produced the interpretive text for panels and also created conceptual draft orientation panels for the Morton County Museum, which will provide orientation to the Cimarron Grasslands project and sites. Staff maintained contact with USFS for these projects throughout the year, including conference calls on project status and planned next steps.

- NTIR staff completed other NTIR projects in 2019 that dealt with both SAFE and other overland trails. The following project is also described in more detail in the earlier section “California National Historic Trail.”
 - » Contracted with 106Group for eight waysides in the Kansas City, MO, metropolitan area



USFS Archeologist, NTIR Archeologist Jill Jensen©(c), and NTIR Historic Architect Mike Romero Taylor on Santa Fe Trail swale, Point of Rocks, Cimarron National Grasslands, KS

TRAIL OF TEARS NATIONAL HISTORIC TRAIL (TRTE)

In 1838, the US government forcibly removed more than 16,000 Cherokee Indian people from their homelands in Tennessee, Alabama, North Carolina, and Georgia, and resettled them in Indian Territory (now Oklahoma). TRTE recognizes the removal of the Cherokee and the paths that 17 Cherokee detachments followed westward. Today, the trail encompasses over 5,000 miles of land and water routes, and traverses portions of nine states. TRTE was authorized in 1987. For more information, visit the following website: <https://www.nps.gov/trte>.

KEY PARTNERS/COOPERATORS:

Trail of Tears Association and its chapters (TOTA), Cherokee Nation, Henry E. Davis Homestead, Middle Tennessee State University (MTSU), Red Clay State Historic Park, US Forest Service (USFS), Arkansas Department of Transportation, Tennessee Valley Authority (TVA), Southeast Tennessee Economic Development District (STEDD), City of Sheffield, Harpers Ferry Center (HFC), University of Alabama, and the US Army Corps of Engineers (USACE).

KEY ACHIEVEMENTS:

- NTIR entered into a partnership certification agreement with the Henry E. Davis homestead in Steelville, MO.
- NTIR personnel presented an NPS Connected Conservation webinar on preservation and mapping of TRTE landscapes and resources.



The final Cultural Landscape Report for Red Clay State Historic Park along the Trail of Tears National NHT in Cleveland, TN

- NTIR staff, working with MTSU’s Center for Historic Preservation, continued the project, “Transportation Systems Used During the Cherokee Removal of 1838-1839.” This two-year research project, funded by NTIR under the terms of a CESU task agreement with the university, will create a better understanding of the various modes of transportation used during the forced removal of the Cherokee.
- NTIR received and accepted two important TRTE studies from the Center for Historic Preservation, conducted with NTIR support under the terms of a CESU task agreement with MTSU. The center’s cultural landscape study for Red Clay Historic State Park in TN identifies characteristics, features, and associations that make Red Clay a historically significant TRTE landscape. A related project, an inventory and assessment of characteristics and features along the Paducah-to-Memphis leg of the designated water route, documents key properties along that historic segment of the trail.



"Solemn Tears," by John Guthrie. Used with artist's permission

- NTIR staff finalized and distributed to the Cherokee National Forest the DCP that summarizes the ideas generated at the design charette held in a previous year for the USFS Fort Armistead area.
- Staff traveled to AR in May 2019 to represent NTIR in a meeting with Arkansas DOT and John McLarty (TOTA partner) to discuss implementing NHT signage throughout the state and troubleshooting incorrectly installed signing.
- NTIR staff continued ongoing work with TVA, STEDD, and TOTA partners on a COTP project at Blythe Ferry in Tennessee. NTIR modified the agreement end date due to difficulties encountered with finding a contractor to build the trail.
- Staff conducted a site visit with TOTA partners, the City of Sheffield, and an archeologist from the University of Alabama in October 2018 to review proposed trail realignment near Tuscumbia Landing in AL. NTIR revised the trail alignment based on this site visit and cultural sensitivity of certain areas nearby. Staff wrote and submitted a COTP funding proposal (which was later approved) to complete construction documents for the phase I development at the site.
- Staff finalized waysides for Paducah, KY; Fort Massac, IL; and Fort Defiance, IL.
- NTIR staff facilitated completion of Hamburg Hill, IL, signing and interpretation project, funded through a USFS IAA. NTIR staff designed one wayside and one orientation panel, which the USFS installed on site. The USFS completed trail sustainability work and installed trail road and pedestrian signs.
- With COTP funding, and at the request of the USACE, staff developed road and pedestrian signing (including unique site identification sign) and designed eleven orientation panels for the Water Route in AR with USACE. Nine of these panels were fabricated in FY19.



- Staff facilitated review of existing NPS map and guide by TOTA members, NTIR staff, and other trail partners for revision by HFC in FY20.
- NTIR purchased various Cherokee artists' work with CTTTP funds for future interpretation projects.
- Staff planned and facilitated an interpretive planning workshop for northwestern AR to

identify interpretive topics, themes, media, and phrasing. These will enable local TOTA members to be able to connect sites by story and experience for the public, and to be able to use interpretive media to connect stories between sites.

- NTIR staff presented an education session to Cherokee Youth Remember the Removal Riders about the NHT, the NPS, and NPS careers.
- Staff designed two TRTE newsletters for TOTA board meetings.
- Staff revised TOTA's TRTE brochure for GA based on partner requests.



Cedartown Removal Camp along the Trail of Tears NHT in Cedartown, GA

SECTION FIVE

NTIR Trails Project Summary

See table 3 for new and completed ONPS base-funded projects for FY 2019.

TABLE 3. New and Completed ONPS Base-Funded Projects, Fiscal Year 2019

Trail(s)	Partner(s)	Project Description
All trails	Academy Solutions Group	Photo Database Contract (preparation and input of NTIR photos into NP Gallery)
All trails	Front Range Media	"What is a National Historic Trail?" Video Production
ELCA	UNM	Historic Building Survey in Greater Albuquerque Area (completed)
ELCA	BLM, Conservation by Design, NMDCA, and THC	El Camino Real de Tierra Adentro Interpretive Plan
ELCA, SAFE	UNM	Student Experience in National Trails Spanish Language Translation Projects
CALI/MOPI/OREG/POEX	Wyoming Military Department	Interpretive Development at Camp Guernsey, WY
ELTE	TAMU and SWBRPP	Researching Indigenous Communities along El Camino Real de los Tejas National Historic Trail in Central and Southwest Texas
ELTE	106Group and ELCAT	El Camino Real de los Tejas Waysides
OREG	HRAI	Columbia River Transportation Narrative History
MOPI	106Group and IMTA	Mormon Pioneer Trail Waysides in Illinois and Iowa
POEX	NPEA	Annual Re-Ride GIS Assistance
SAFE, OREG, CALI	106Group, OCTA, SAFE, and Kansas City Area Historic Trails Association (KCAHTA)	Kansas City Area Waysides Replacement
SAFE	USFSI	Comanche and Cimarron National Grasslands Preservation Plans (completed)
TRTE, SAFE	MTSU	Trail of Tears Water Routes Inventory, Owens-McCoy House HSR, Red Clay State Park Cultural Landscape Report (completed)



TRAIL WEBSITES

NTIR personnel currently manage ten websites: one for each of the nine national historic trails that the office either administers or co-administers, plus the NTIR website.

KEY ACHIEVEMENTS:

- Personnel made progress towards overhaul of all nine trail websites. Staff developed and began implementation of Phase II of action plan for revision of websites, working on over 600 individual web pages.
- NTIR hired a digital media champion to manage all ten websites and to make significant revisions.
- NTIR awarded a contract to Front Range Media for a “What is an NHT,” which will be a two- to four-minute video production.

The final video will live on website home pages. Filming to occur in FY20.

- Staff revised the NTIR website to include a new section titled “Partners” with navigation and a linking scheme (to webpages on both NTIR and NHT websites) that will be easy for partners to use.
- Staff posted on Twitter, Instagram, and nine Facebook pages.
- Staff facilitated the first-ever design and fabrication of wooden Junior Ranger badges for all nine NHTs using Western National Parks Association (WNPA) Aid-to-Parks funding. FY19 was the first year NTIR received WNPA Aid-to-Parks for SAFE and TRTE.

See Tables 4 and 5 for FY19 national historic trail website statistics and social media statistics.

TABLE 4. NTIR Website Statistics, FY 2019

Trail(s)	Page Views	Users (Visitors)	Total Hours Visitors Spent on Website
CALI	84,699	35,632	2221
ELCA	36,508	16,824	693
ELTE	51,7871	20,778	655
MOPI	87,337	34,046	1,459
OLSP	33,906	12,927	360
OREG	229,084	97,411	3,599
POEX	146,552	65,366	2,121
SAFE	112,592	45,383	2,057
TRTE	322.7171	151,820	5,012
ROSI	35,653	18,092	467
NTIR	11,255	4,425	91
Total <i>(nine trails + ROSI + NTIR)</i>	1,152,090	502,704	18,735

TABLE 5. NTIR Social Media Statistics, FY 2019

National Historic Trail Facebook Page	Number of Followers	Change in FY 2019	Number of Posts
CALI	260	+39	19
ELTE	626	+185	42
ELCA	611	+287	40
MOPI	641	+342	12
OLSP	2,771	+142	48
OREG	1,525	+647	22
POEX	1,748	+581	15
SAFE	4,007	+765	74
TRTE	2,242	+1,485	61
Total	14,431	+4,473	333

NTIR	Number of Followers	Change in FY 2019	Number of Posts
Instagram	1,400	+480	123
Twitter	550	+244	

VOLUNTEERS-IN-PARKS (VIP) PROGRAM

Volunteers, most of whom work through NTIR’s partner organizations, are the backbone of the national historic trails effort.

KEY ACHIEVEMENTS:

- During fiscal year 2019, the various partnership associations reported that volunteers had devoted 188,127 hours of time on trail-related matters. This is the equivalent of more than 90 years of full-time volunteer work. Given an assumed hourly rate of \$24.69, that level of effort translated to a financial contribution to the trails of \$4,644,855.60. In addition, volunteers tendered \$353,444 in out-of-pocket (non-reimbursable) expenses on

hotels, meals, and incidentals.

- In addition to their work effort and expenses, volunteers drove 843,772 miles on trails-related matters, which is equivalent to almost 34 times around the world. Given the standard government reimbursement rate of \$0.56 per mile, volunteers spent \$472,512.32 on trails-related driving.
- The total financial impact of all NTIR volunteer-related activity totaled \$5,589,880.20. All NTIR staff are deeply thankful to the thousands of trail supporters who, year in and year out, make enormous strides in protecting, interpreting, and developing the National Trails Intermountain Region trails.

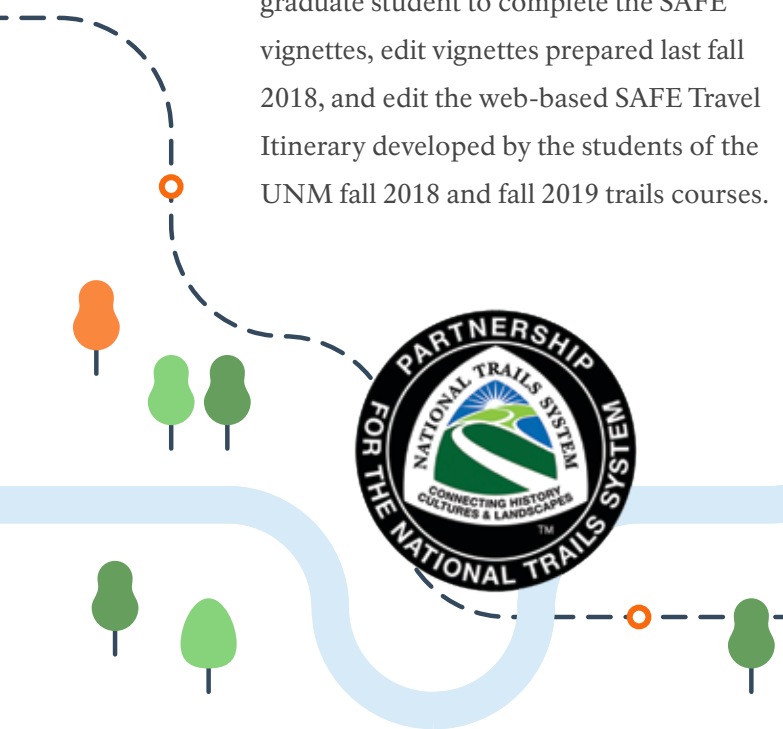
UNIVERSITY-BASED PARTNERSHIPS

- Maria Nemelka, from the UNM Spanish-Portuguese Department, completed her two-year internship in May. She translated many NTIR materials, including maps, brochures, the web-based ELCA travel itinerary, and SAFE story map, into Spanish.
- NTIR offered Jesse Ercolani, of UNM's History Department, the second-year internship (as part of a three-year shared internship project under a CESU agreement). After starting in mid-August, he has been researching and writing various thematic essays for the proposed SAFE Travel Itinerary.
- Staff finalized a modification to the UNM History Department three-year shared internship project (CESU) to hire a graduate student to complete the SAFE vignettes, edit vignettes prepared last fall 2018, and edit the web-based SAFE Travel Itinerary developed by the students of the UNM fall 2018 and fall 2019 trails courses.



The University of New Mexico

- UNM history professor Fred Gibbs finished teaching the first trails class in December 2018 (as part of a CESU agreement with NTIR). Staff met with Dr. Gibbs in March 2019 to review the course accomplishments, receive ELCA/ELTE vignettes along with SAFE historic sites essays, and discuss the future of the course. Staff also attended the UNM trails advisory committee meeting on May 6, 2019; the main agenda item was a synopsis of the first trails course taught at UNM and a discussion about next steps. In August 2019, staff met with Dr. Gibbs to discuss mapping and information resources for the next iteration of the class. Dr. Gibbs taught the trails course again in fall 2019, and personnel from the Department of Geography and Environmental Studies will then co-teach the course in 2020-2021.
- Staff prepared an article for the summer 2019 issue of *Pathways Magazine*, the quarterly publication of the PNTS, about NTIR's collaboration with UNM on the first national trails course.





The University of Utah



Western Colorado University

- Staff continued their work with the University of Utah’s Department of Geography DIGIT Lab under a multiyear CESU agreement established between NPS and the university. The DIGIT Lab assists in the development of visitor use experience web maps for the nine national historic trails. For this effort, the DIGIT Lab also serves as a data mining role for recreational and interpretive locational data along the NHTs and provides technical advice and assistance as needed.
- NTIR interpretive staff met with Western State Colorado University (WSCU, now known as Western Colorado University) to begin the work of the CESU agreement for research and development of a digital Junior Ranger program. NTIR staff provided a remote presentation to WSCU students on NHT history, the role of the NTIR office and its Junior Ranger programs, and then provided in-depth information in an onsite meeting in Gunnison, CO. Later, NTIR staff hosted the students on field trips to Salt Lake City, UT, and Santa Fe, NM, and helped coordinate their visits to other NHT sites.



Panorama in Devils Garden Trail in Arches National Park, UT along the Old Spanish NHT



NTIR GIS Specialists Brian Deaton and Sarah Rivera presenting on the National Trail System Act's 50th anniversary and the NTIR GIS program at the 2018 Tribal GIS Conference in November 2018

GEOGRAPHIC INFORMATION SYSTEMS

GIS is an integral part of trails programming, as its products are used routinely by in-house and independent researchers, program managers, cultural resource specialists, planners, interpreters, and the public.

The GIS program, operated by the staff on the NTIR's Resource Information Management (RIM) Team, oversees the development and ongoing maintenance of the GIS data for ROSI and nine national historic trails. In addition to

the in-house hours devoted by full-time NTIR staff, the RIM Team continues to work with the University of Utah's Department of Geography DIGIT Lab under a multiyear cooperative agreement established between NPS and the university.

KEY ACHIEVEMENTS:

- NTIR staff assisted the NPEA with their re-ride by collecting their near real-time GPS locations from the riders and putting them onto a web map application. This web mapping application was posted on the

partner's website, where it was viewed by thousands of people. The acting Regional Director recognized the GIS staff for this effort.

- NTIR staff published an article in the NPS Geospatial Insights and the NPEA's newsletter concerning the Pony Express Re-Ride web mapping application.
- NTIR staff published the finalized versions of the Butterfield Overland Trail Special Resource Study Route and Chisholm and Great Western National Historic Trail Feasibility Study Routes alignments, making it available to the public for download on Integrated Resource Management Applications and ArcGIS Online (along with its completed metadata).
- NTIR staff presented at the 2018 Tribal GIS Conference in Albuquerque, NM, concerning the NTSA's 50th Anniversary and the work of the NTIR RIM Team.
- NTIR staff developed and presented multiple day training class on emerging GIS software (i.e., ESRI ArcGIS Pro) to interdisciplinary staff to enable staff transition to a new GIS platform. **Note:** *References to non-DOI products do not constitute an endorsement by the DOI.*

RESOURCE ADVOCACY AND PROTECTION

NTIR staff participated in 186 compliance reviews for external federal undertakings with potential to affect one or more of the nine NHTs administered by NTIR. NTIR's role is to help the federal lead agency avoid, minimize, or mitigate adverse impacts and effects to the NHTs. Some of the key undertakings include extensive consultation on the following projects with potential to affect:

CALI/MOPI/OREG/POEX:

- Nebraska Public Power District Transmission Line R project through



Transmission lines along the Old Spanish NHT in rural Utah

the Sand Hills. The selected alternative will adversely affect the Sand Hills and O’Fallon’s Bluff ruts. NPS signed programmatic agreement in order to participate in mitigation discussions.

- I-229 Bridge Replacement at St. Joseph, MO, with potential to affect trail resources along or near the riverfront. Alternatives still in preparation and undergoing internal review.
- Boardman to Hemingway Transmission Line in ID/OR, with adverse impacts to OREG. NTIR considered but did not comment in Oregon Siting Council’s public review process.
- Riley Ridge CO2 Pipeline in WY (cooperating agency). BLM notified NPS that the Record of Decision has been signed.
- WY’s Bridger-Teton National Forest Adverse Effects to Lander Cutoff. NTIR consulted on and signed MOA for mitigation of inadvertent damage to the trail and agreed to collaborate in production of interpretive signs.
- BLM’s 368 Transmission Line Corridors, with potential to affect all NHTs.

- NV’s Long Canyon Mine, with adverse effects on the Hastings Cutoff of CALI.

ELTE:

- BLM’s 368 Transmission Line Corridors across the West.

ELCA:

- BLM’s 368 Transmission Line Corridors across the West.

OLSP:

- Gemini Solar, a large solar installation in the Moapa, NV, area.
- Grand Staircase-Escalante/Bears Ears/Kanab Field Office Resource Management Plan Revision, affecting OLSP in UT (BLM issued finding of No Adverse Effect).
- BLM’s 368 Transmission Line Corridors across the West.
- Lake Powell Pipeline, affecting OLSP in southern UT.

Many of the undertakings are energy development projects led by BLM and/or the Federal Energy Regulatory Commission.



The Hastings Cutoff on the California NHT outside of Wells, NV



Route 66 sign, Tulsa, OK

ROUTE 66 CORRIDOR PRESERVATION PROGRAM

Congress created the Route 66 Corridor Preservation Program to preserve and commemorate the special places and stories of the American icon, Route 66. The program works with the eight states through which the route passes to raise awareness about the history and significance of the route; identify preservation needs and strategies; and to facilitate collaboration among the states. The program provides technical and financial assistance to preserve the most significant and representative historic properties dating to the highway's period of historic significance (1926-1985). It also assists with preservation planning, research, and educational initiatives.

KEY COOPERATORS/PARTNERS:

Local, state, federal, and Tribal agencies, Route 66 associations, statewide preservation organizations, educational institutions, State Historic Preservation Offices (SHPOs), Departments of Transportation (DOTs), environmental protection agencies, the Route 66 Road Ahead Partnership, private individuals, and others.

KEY ACHIEVEMENTS:

- NTIR staff cooperated with the Route 66 Road Ahead Partnership to support the ongoing development of a national framework for collaboration, including the Preservation Working Group, Research and Education Working Group, Route 66 Associations Working Group, Vintage Motel

Preservation Task Force, Green Book Task Force, and support for ongoing research on the economic impacts of historic preservation and heritage tourism on the route.

- In March 2019, staff co-organized and hosted the annual Research Route 66 meeting in Baxter Springs, KS, in cooperation with the Baxter Springs Heritage Center and Museum and the New Mexico Route 66 Association.
- Staff developed MOU to develop a collaborative relationship with Research Route 66 and the Route 66 Road Ahead Partnership. Staff cooperated with the California Preservation Foundation to complete the California Route 66 Historic Road Alignment and Property Survey in the Los Angeles metropolitan area.

- Staff cooperated with Ottawa County, OK, to continue the Miami Ribbon Road historic preservation planning documents (preconstruction documents).
- Staff continued work to elevate status of Bridgeport Hill-Hydro National Register-listed segment of Route 66 in OK from local to national significance.
- In collaboration with Route 66 Associations, staff continued development of a GIS Route 66 database of historic road alignments and properties.



A historic postcard of the Monterey Motel in Albuquerque, NM, recipient of a cost-share grant to restore its windows.



The Hilltop Motel in Kingman, AZ, which received cost-share funds to renovate its sign and pool.



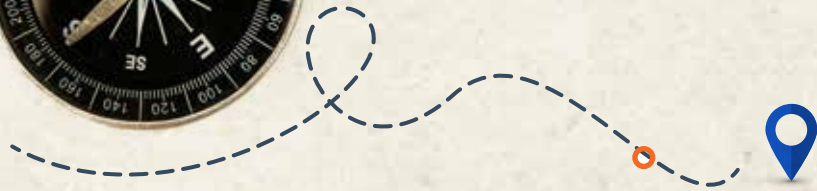
- Staff participated in numerous public presentations including World Monuments Fund, Columbia University, California Preservation Conference, Missouri Preservation Conference, National Park Travelers Club, and others.
- Two NTIR staff members were named to the Road Ahead’s Green Book Task Force, and in mid-September the task force (led by Bill Thomas) held an initial teleconference call.

ROUTE 66 COST-SHARE GRANT PROGRAM

The Route 66 Cost-Share Grant program provides financial assistance for eligible historic preservation, research, oral history, interpretation, and education projects related to the highway. See Table 6 for details of the 2019 program.

TABLE 6. Route 66 Corridor Preservation Program Cost Share Projects, FY19

Grant Name	Project Description	Cost Share	Partner Match
Monterey Motel Window Restoration – Albuquerque, NM	Restore steel sash windows to historic appearance	\$30,000	\$34,294
Hilltop Motel Historic Sign and Pool Restoration – Kingman, AZ	Restore cultural landscape elements to historic appearance	\$30,000	\$37,000
Williams’ Store Exterior Brick Repointing – Galena, KS	Repair tuck pointing and masonry to building exterior	\$2,500	\$2,500
Route 66 Engineering Course – The University of Texas at El Paso, Department of Civil Engineering	Develop three-credit university-level course to teach engineering and historic preservation principles	\$17,844	\$17,844
Texas Route 66 Roadbed National Register Nominations	Nominate eight miles of first-generation concrete roadbed to National Register of Historic Places	\$5,172	\$5,600
Route 66 Women Multi-Episode Documentary Film)	Create multi-episode documentary on women’s historical experiences of Route 66	\$14,475	\$22,025
Total		\$99,991	\$119,263



Happy Trails