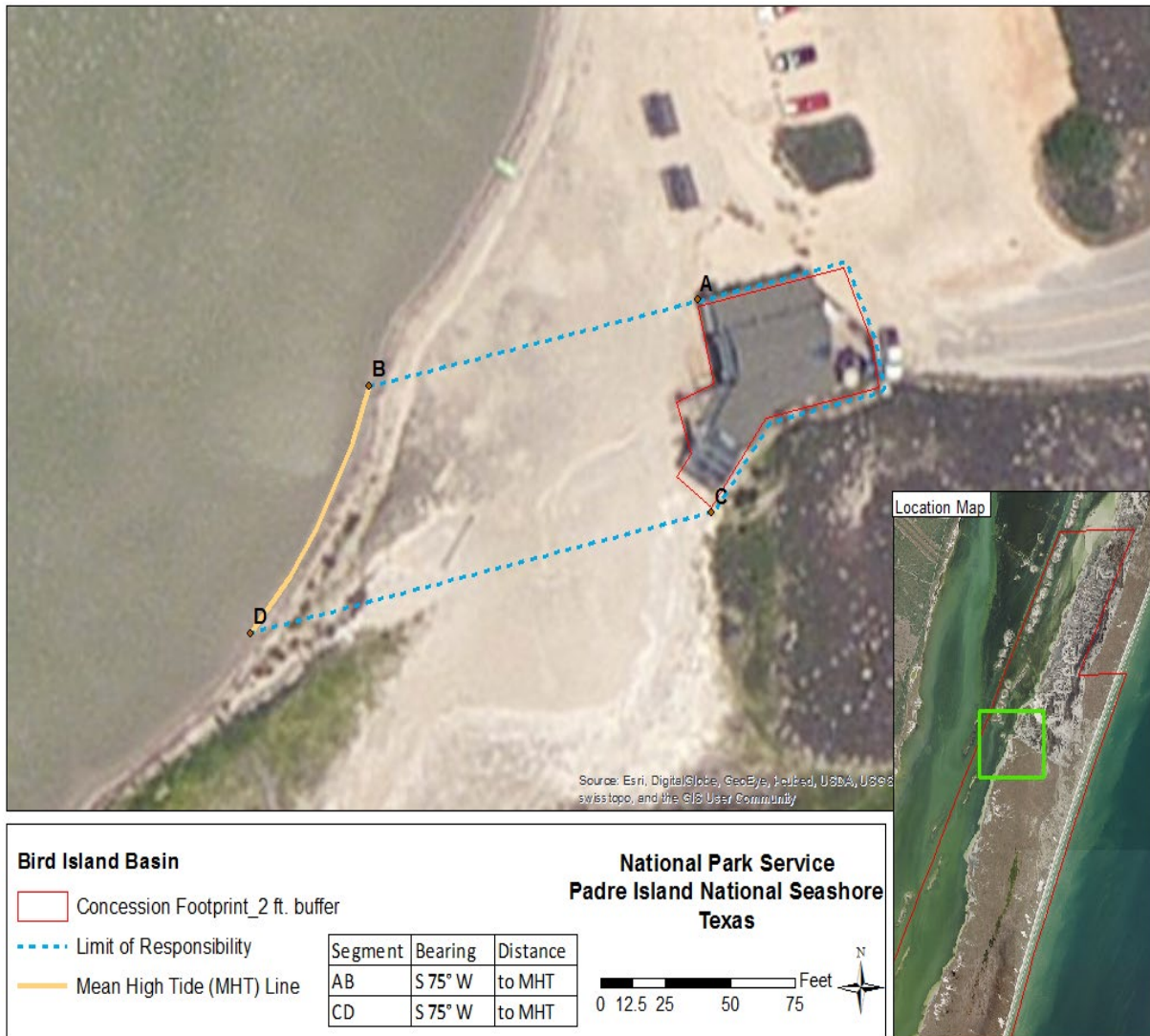


EXHIBIT C

ASSIGNED LAND AND REAL PROPERTY IMPROVEMENTS
(CONCESSION FACILITIES)

Land Assigned

Land is assigned in accordance with the boundaries shown on the following map:



Real Property Improvements Assigned

The following real property improvements are assigned to the Concessioner for use in conducting its operations under this Contract:

NONE

Approved, effective _____, 20____

By: _____

Kate H. Hammond

National Park Service Regional Director, Interior Regions 6, 7 and 8