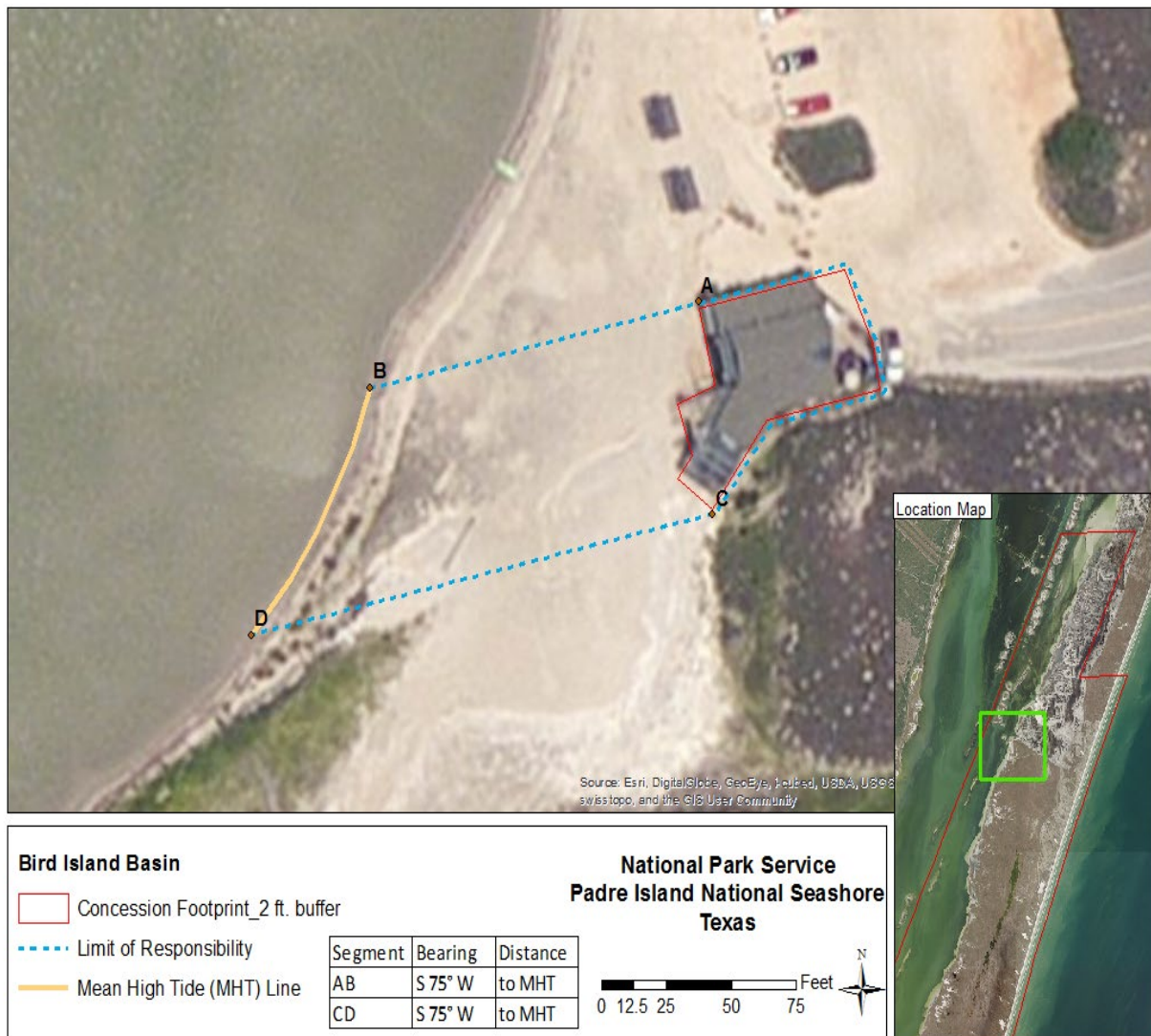


## EXHIBIT C

# ASSIGNED LAND AND REAL PROPERTY IMPROVEMENTS (CONCESSION FACILITIES)

## Land Assigned

Land is assigned in accordance with the boundaries shown on the following map:



**Real Property Improvements Assigned**

The following real property improvements are assigned to the Concessioner for use in conducting its operations under this Contract:

**NONE**

Approved, effective \_\_\_\_\_, 20\_\_\_\_

By: \_\_\_\_\_

Kate H. Hammond

National Park Service Regional Director, Interior Regions 6, 7 and 8