

# World Heritage Sites in the United States



**Governor's House, La Fortaleza and San Juan National Historical Site**  
© HARVEY BARBROSE



**Red-footed booby, Papaha 'naumokua 'kea**  
© KRIS KRUG



**Morning Glory Pool, Yellowstone National Park**  
© JEFF SULLIVAN PHOTOGRAPHY



**Statue of Liberty**  
© MICHAEL BELL

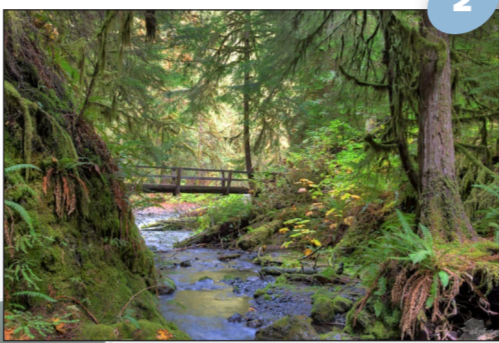


**Grand Canyon National Park**  
© PIXABAY/SKEEZE



**Black bear, Great Smoky Mountains National Park**  
© MICHAEL LOTO

**1 Klauane/Wrangell-St. Elias/ Glacier Bay/Tatshenshini-Aleek**  
vii • viii • ix • x  
ALASKA (US), CANADA - 1979  
Over 24 million acres of wild lands and waters are changed by glaciers and volcanic activity.  
[www.nps.gov/glba](http://www.nps.gov/glba), [www.nps.gov/wrst](http://www.nps.gov/wrst)  
[www.pc.gc.ca/en/pn-nplyt/klauane](http://www.pc.gc.ca/en/pn-nplyt/klauane)  
[www.env.gov.bc.ca/bcparks/explore](http://www.env.gov.bc.ca/bcparks/explore)  
© MIKE KOCH

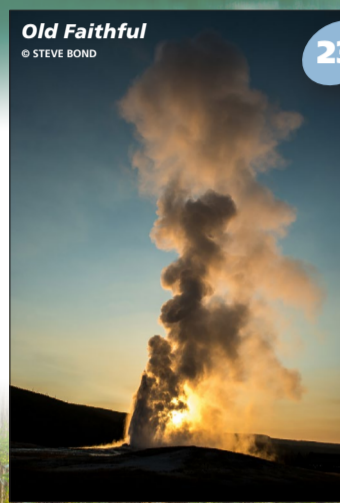


**2 Olympic National Park**  
vii • ix  
WASHINGTON - 1981  
Features temperate rainforest, glaciers, peaks, alpine meadows, old-growth forest, and wilderness coastline. Critical habitat for endangered species including northern spotted owl and bull trout.  
[www.nps.gov/olymp](http://www.nps.gov/olymp)  
© MIKE CROSS



**Grinnell Point**  
© MARK STEVENS

**3 Waterton-Glacier International Peace Park**  
vii • ix  
Montana (US), Canada - 1995  
World's first international peace park. Rich biodiversity and outstanding scenery with prairie, forest, alpine, and glacial features.  
[www.nps.gov/glac](http://www.nps.gov/glac)  
[www.pc.gc.ca/en/pn-nplab/waterton/](http://www.pc.gc.ca/en/pn-nplab/waterton/)



**Old Faithful**  
© STEVE BOND

**23 Yellowstone National Park**  
vii • viii • ix • x  
WYOMING, MONTANA, IDAHO - 1978  
Renowned for geothermal features, Yellowstone has the world's largest concentration of geysers. Protects grizzly bears, wolves, bison, and elk.  
[www.nps.gov/yell](http://www.nps.gov/yell)

**22 Redwood National and State Parks**  
vii • ix  
CALIFORNIA - 1980  
Coastal mountain home to California brown pelicans, sea lions, bald eagles, and ancient redwood forest—the world's tallest trees.  
[www.nps.gov/redw](http://www.nps.gov/redw)  
© AMY HUDECEK

## PRESERVED FOR ALL HUMANITY

With over 1,100 properties, the World Heritage List shows a shared global commitment to preserve the world's most important natural and cultural sites. Learn more about the World Heritage sites in the United States, described here with selection criteria in Roman numerals (*details other side*), location, inscription year, and websites. The Passport booklet *World Heritage Sites in the United States* can be purchased at [www.eparks.com](http://www.eparks.com). For more on the World Heritage List: [whc.unesco.org/en/statesparties/us](http://whc.unesco.org/en/statesparties/us).

Natural Cultural Mixed

**4 Cahokia Mounds State Historic Site**  
iii • iv  
ILLINOIS - 1982  
This urban complex flourished 1000–1350 CE (Common Era). Regional center for prehistoric Mississippian culture.  
[www.cahokiamounds.org](http://www.cahokiamounds.org)  
**Monks Mound**  
© JIM WARK/ARPHOTO



**5 Statue of Liberty**  
i • vi  
NEW YORK - 1984  
This gift from France to the United States is a symbol of international friendship, peace, progress, freedom, democracy, and human migration. Renowned for art and engineering.  
[www.nps.gov/stli](http://www.nps.gov/stli)  
© PIXABAY

**21 Papaha 'naumokua 'kea**  
iii • vi • viii • ix • x  
HAWAII - 2010  
This vast living "cultural seascape" embodies kinship of people to place in Native Hawaiian cosmology. Includes seamounts, endemic species, critical habitats, and coral reefs.  
[www.papahanaumokuakea.gov](http://www.papahanaumokuakea.gov)  
Greg McNeil / NOAA



**20 Hawai'i Volcanoes National Park**  
viii  
HAWAII - 1987  
Earth's greatest mass of volcanoes, including Mauna Loa and Kilauea, tower over a "hotspot" in the mantle. Continuous geologic activity builds an ever changing landscape home to rare and endemic species.  
[www.nps.gov/havo](http://www.nps.gov/havo)  
NPS



**19 Yosemite National Park**  
vii • viii  
CALIFORNIA - 1984  
Glacial erosion helped sculpt this scenic landscape. Soaring granite cliffs, polished domes, high waterfalls, sequoia groves, wilderness, deep-cut valleys, and alpine meadow habitats.  
[www.nps.gov/yose](http://www.nps.gov/yose)  
© JOCELYN PANTALEON HIDALGO



**18 Chaco Culture**  
iii  
NEW MEXICO - 1987  
Prehistoric, monumental masonry structures in Chaco Canyon, along with a network of roads and outlier sites like Aztec Ruins, exhibit the vast influence of the ancestral Puebloan culture on the Southwestern landscape.  
[www.nps.gov/lazru](http://www.nps.gov/lazru), [www.nps.gov/chcu](http://www.nps.gov/chcu)  
© GREGORY PHOTOGRAPHY

**7 Everglades National Park**  
viii • ix • x  
FLORIDA - 1979  
North America's largest subtropical wilderness has several vital habitats for plants and animals including Florida panthers and manatees. Key area for bird migration and breeding.  
[www.nps.gov/ever](http://www.nps.gov/ever)  
© CARLTON WARD JR.



**Castillo San Felipe del Morro**  
© ANGEL LOPEZ

**8 La Fortaleza and San Juan National Historic Site**  
vi  
PUERTO RICO - 1983  
Strategic defensive structures represent early European military architecture, engineering, and history in the Americas.  
[www.nps.gov/saju](http://www.nps.gov/saju)



**10 Monumental Earthworks of Poverty Point**  
iii  
LOUISIANA - 2014  
Earthen construction complex of five mounds, six concentric ridges, and a central plaza dates to 3700–3100 BCE (Before Common Era).  
[www.povertypoint.us](http://www.povertypoint.us)  
[www.nps.gov/popopo](http://www.nps.gov/popopo)  
© LOUISIANA OFFICE OF TOURISM

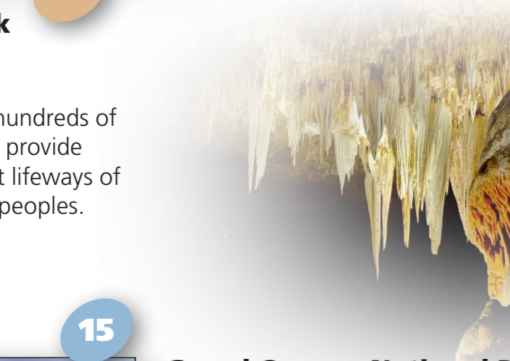


**17 The 20th-century Architecture of Frank Lloyd Wright**  
ii  
EIGHT US LOCATIONS - 2019  
These buildings reflect the worldwide influence of American architect Frank Lloyd Wright. Using innovative materials and designs, his organic architecture blurs the boundary between nature and humanity.  
[www.savewright.org](http://www.savewright.org)



**Solomon R. Guggenheim Museum**  
© ARNO DEWALD

**15 Mesa Verde National Park**  
iii  
COLORADO - 1978  
Prehistoric village sites, including hundreds of ancestral Puebloan cliff dwellings, provide glimpses into the past and present lifeways of the Southwest's American Indian peoples.  
[www.nps.gov/meve](http://www.nps.gov/meve)  
© MICHAEL KANEMOTO



**16 Carlsbad Caverns National Park**  
vii • viii  
NEW MEXICO - 1995  
This extensive cave system is profusely decorated with spectacular and ornate cave formations. Huge chambers, unusual origin, bat flights, and desert ecosystem.  
[www.nps.gov/cave](http://www.nps.gov/cave)  
NPS

**9 Great Smoky Mountains National Park**  
vii • viii • ix • x  
NORTH CAROLINA, TENNESSEE - 1983  
Among earth's oldest mountains, the Smokies feature old-growth forest and thousands of species.  
[www.nps.gov/grsm](http://www.nps.gov/grsm)  
© KEN GABLES



**11 Mammoth Cave National Park**  
vii • viii • ix  
KENTUCKY - 1981  
100 million years of geological history continues in the world's longest network of natural caves and underground passageways. Some flora and fauna are known to exist only here.  
[www.nps.gov/maca](http://www.nps.gov/maca)  
NPS



**14 Grand Canyon National Park**  
vii • viii • ix • x  
ARIZONA - 1979  
This grandest ongoing geological spectacle is a stunning display of Earth's history. Volcanic features, eroded landforms, waterfalls, white-water, and an array of plants and animals.  
[www.nps.gov/lgrca](http://www.nps.gov/lgrca)  
© Tom Gotchy



**Mission Concepción**  
© ALEX ALDANA

**13 San Antonio Missions**  
ii  
TEXAS - 2015  
Five frontier mission complexes and a ranch date to the 1700s. Styles weaving Spanish and indigenous elements showing an interchange of cultures and values.  
[www.nps.gov/saan](http://www.nps.gov/saan)  
[www.thealamo.org](http://www.thealamo.org)

**12 Monticello and the University of Virginia in Charlottesville**  
i • iv • vi  
VIRGINIA - 1987  
The sites of President Thomas Jefferson's plantation home and "academical village." Jefferson's architectural designs link American and classical ideals.  
[www.monticello.org](http://www.monticello.org), [www.virginia.edu](http://www.virginia.edu)



**Monticello**  
© BILLY LOCKEY PHOTOGRAPHY  
COURTESY THOMAS JEFFERSON FOUNDATION

**14 Taos Pueblo**  
iv  
NEW MEXICO - 1992  
The dwellings and ceremonial buildings of this pre-Hispanic adobe settlement illustrate the traditional architecture and culture of the Pueblo people of Arizona and New Mexico.  
[www.taospueblo.com](http://www.taospueblo.com)  
© Ellen Dunn

