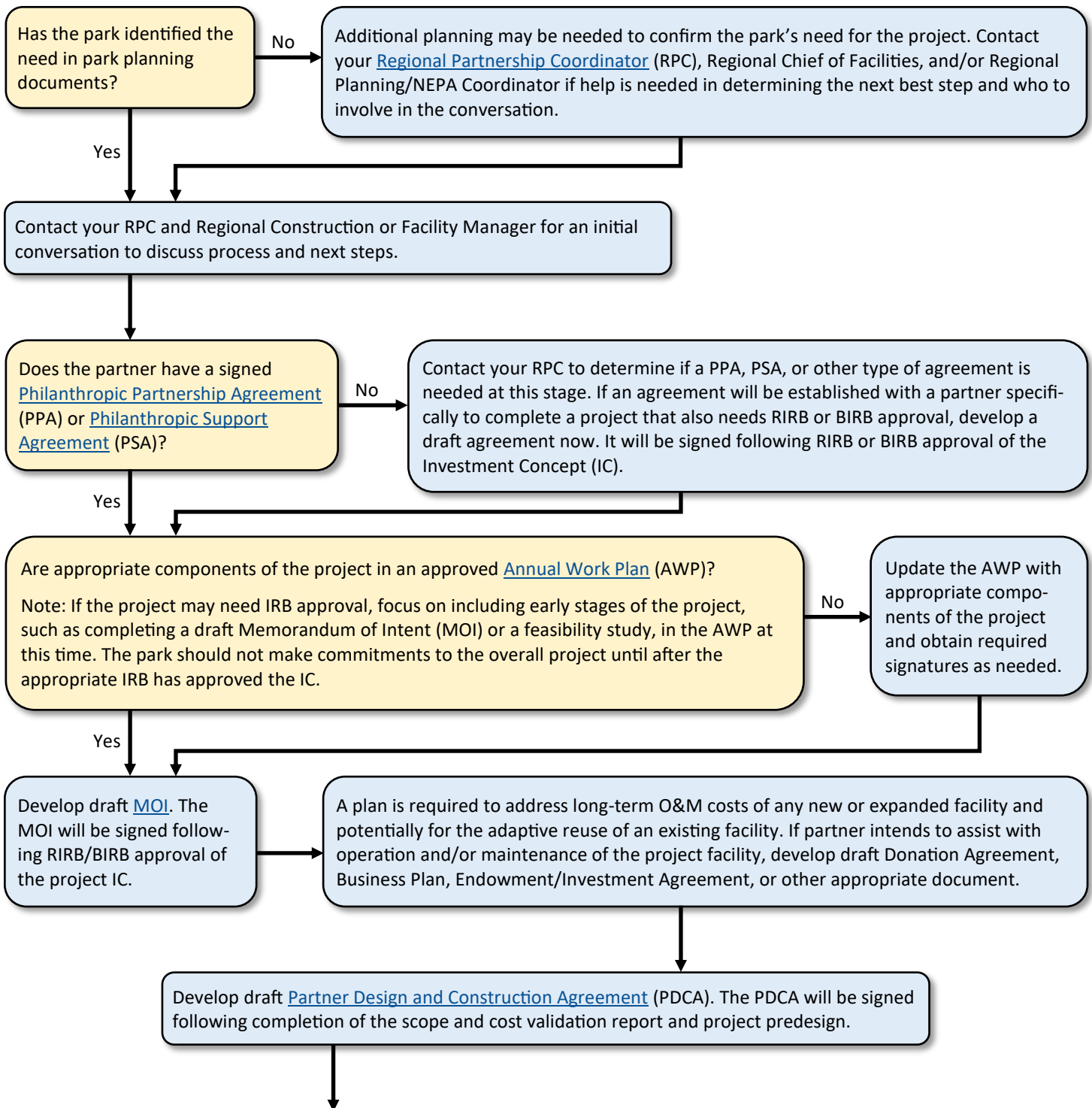
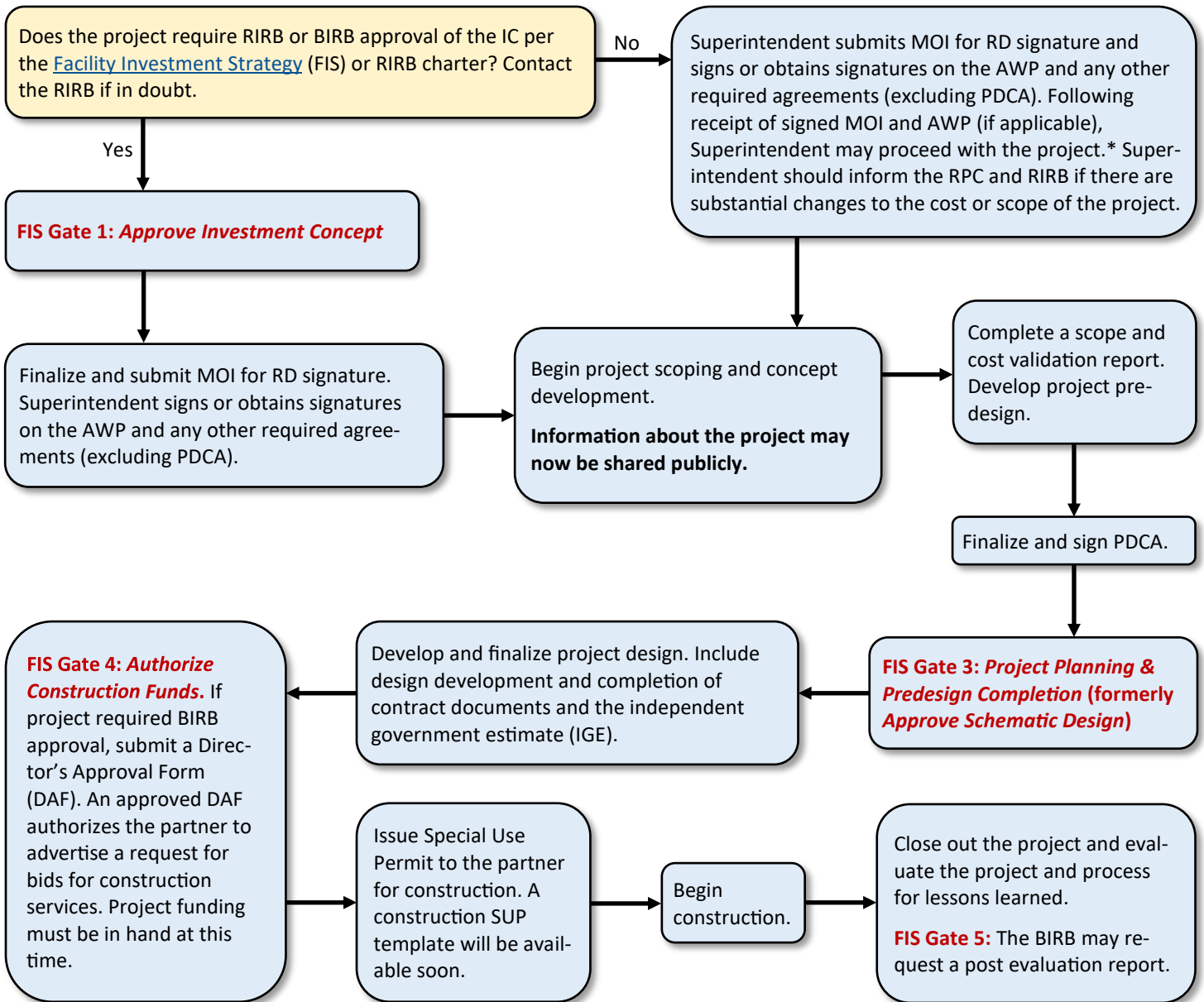


## Partnership Design and Construction Flowchart Partner-Managed Projects \$500,000 and Above





\* If total project cost (including planning, design, contingency, etc.) exceeds a Regional or Bureau IRB threshold during planning, design, or contracting processes, the park may have to seek RIRB/BIRB approval at that time prior to moving forward or awarding a contract.

Notes: This flowchart does not include every step required by the Facility Investment Strategy. Thoroughly read the FIS for other facility project requirements. In addition, other steps will likely be needed to meet law and policy requirements associated with the National Environmental Policy Act (NEPA), Section 106 of the National Historic Preservation Act, Endangered Species Act, etc.

If the park or partner intends to conduct a professional Design Competition for the project, follow guidance in [RM-21, Section 7.1](#). A Design Competition proposal must be included in the IC package for initial review by the RIRB/BIRB. The Design Competition may proceed following RIRB/BIRB approval of the IC.