



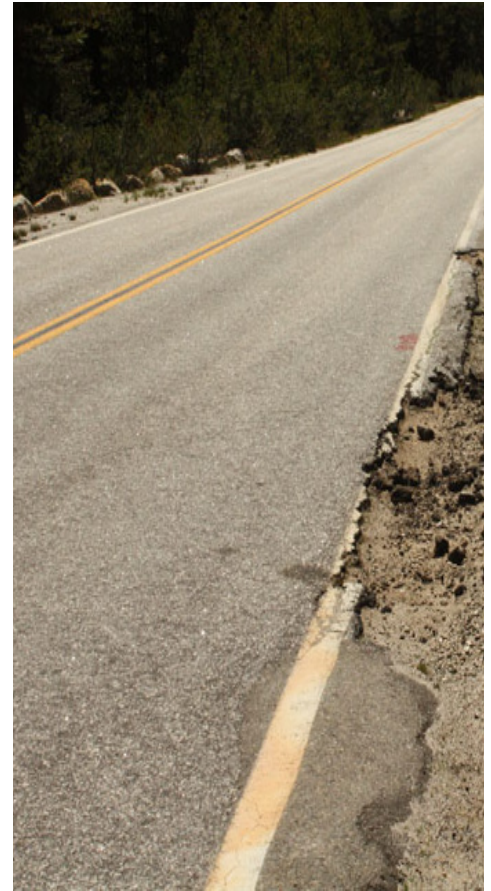
## Tioga Road Rehabilitation Project - Environmental Assessment

The National Park Service is releasing an environmental assessment (EA) that addresses the rehabilitation of approximately 41 miles of the Tioga Road. This road is a primary east-west scenic route across the Sierra Nevada with high traffic volume during the peak summer and fall seasons, providing access to Tuolumne Meadows, Tioga Pass, U.S. Route 395 and numerous popular trailheads including: John Muir, Pacific Crest, Yosemite Creek, Lukens Lake, and others beginning in Tuolumne Meadows.

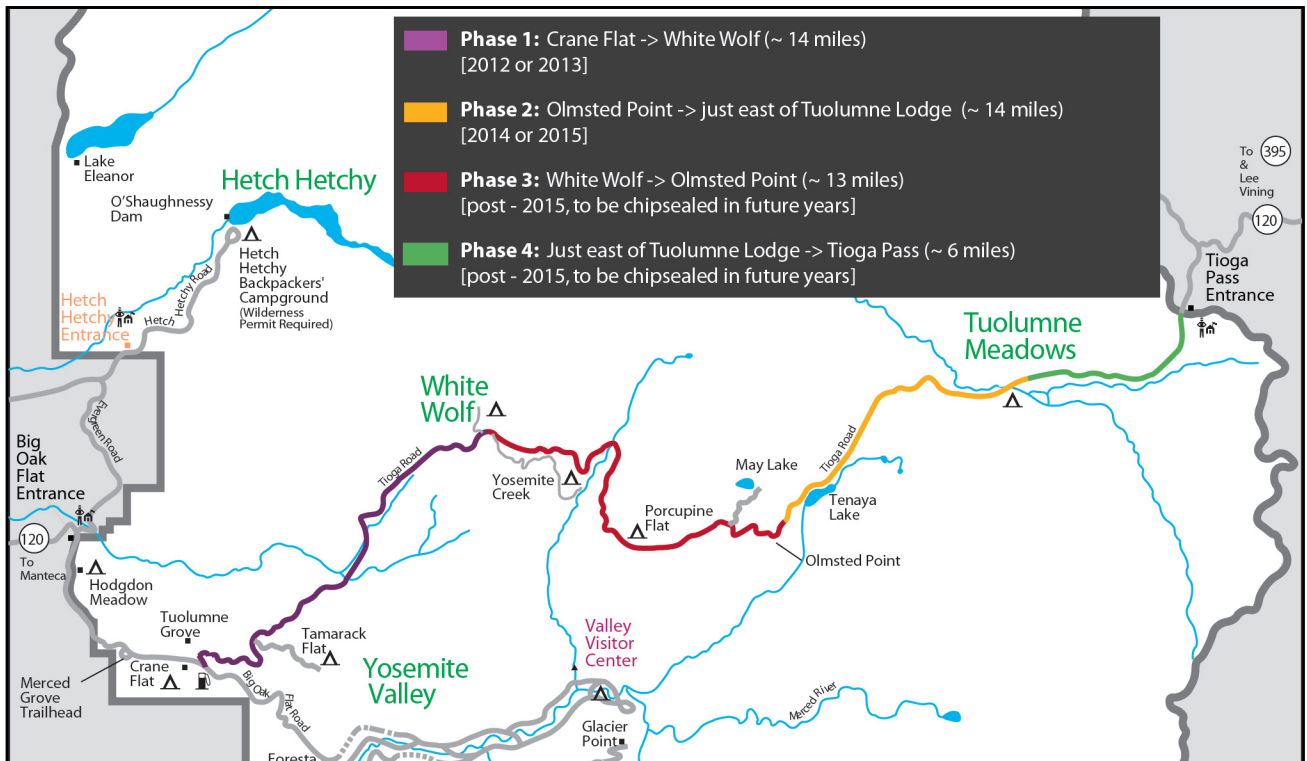
The project proposes restoration of the roadbed by repaving, restoring ditches and shoulders, addressing turnouts, and replacing undersized or failing culverts to facilitate drainage.

The following goals guided development of alternatives for the proposed Tioga Road rehabilitation:

- Improve the safety of visitors and employees traveling on Tioga Road.
- Maintain the character of the road corridor, including significant cultural landscape characteristics such as the curvilinear alignment, grade, and road features such as culverts, retaining walls, and turnouts.
- Restore drainage features to control erosion and to protect natural and cultural resources.
- Increase accessibility for park visitors and reduce confusion regarding designated roadside turnouts.
- Manage roadside parking and traffic flow through improved turnouts.
- Reduce rockfall potential along Tioga Road by scaling rock at select locations.
- Manage and improve the Tuolumne Grove parking area.



### Location and Tentative Construction Timeline



---

**Planning  
Timeline and  
Your Part in  
the Process**

**WINTER 2010**

Following the public scoping period in winter 2010 comments were analyzed. A scoping report is available on the park's website: [www.nps.gov/yose/parkmgmt/tioga\\_rehab.htm](http://www.nps.gov/yose/parkmgmt/tioga_rehab.htm). Issues and concerns identified during scoping were utilized to develop alternatives which are analyzed in detail in the Tioga Road Rehabilitation Environmental Assessment (EA).

**SUMMER 2010**

In June 2010 an internal field review was conducted and it was determined that an additional section of roadway should be rehabilitated within this project. This section is located east of Olmsted Point and extends to the east end of Tuolumne Meadows (indicated below for Phase 2).


Throughout the Tuolumne Meadows corridor decisions made through the Tuolumne River Planning effort will determine what specific actions will be taken throughout the Tuolumne Meadows area. If Tuolumne River Planning efforts are not complete when construction is ready to start, then this proposed project will solely address the resurfacing and repaving of the current road, and will not alter or affect roadside parking.

**FALL 2010**

A public site visit was held in October for those interested in visiting the site and asking specific questions of park managers associated with this project.

**WINTER 2011**

Alternatives were developed in preparation for your review upon the release of the Environmental Assessment in July 2011.



**You Are  
Here**

**SUMMER 2011 - PUBLIC REVIEW AND COMMENT PERIOD: AUGUST 8 - SEPTEMBER 8, 2011**

The public review and comment period for the environmental assessment is scheduled for August 8 - September 8, 2011. Your comments on the environmental assessment will be used to prepare a final document. If approved, the rehabilitation of the Tioga Road would likely begin in the Summer 2012 and continue through 2016.

---

**Submit Your  
Comments!**

Public review and comment period of the Tioga Road Rehabilitation Environmental Assessment is scheduled to occur between August 8, 2011 - September 8, 2011.

To learn more, download a copy of the document, and/or submit a comment:

**ONLINE:** Comment during the public review period online at the National Park Service Planning, Environment and Public Comment (PEPC) site: <http://parkplanning.nps.gov/tiogaroad>

**SITE VISIT:** Join park staff on August 23, 2011 for a site visit along the Tioga Road. Meet at the large turnout west of White Wolf turnout. This turnout is 13.5 miles east of Crane Flat along the Tioga Road. Bring questions and comments to this site visit and ask park staff about specific components of the plan. Wear comfortable hiking shoes and bring water, lunch and/or snacks, and wear appropriate clothing and sun protection for warm weather.

**OPEN HOUSE:** Come and discuss this plan with park staff at the Open House on August 31, 2011. It will be held in the Valley Visitor Center Auditorium in Yosemite Valley from 1:00pm - 4:00pm. Printed and CD copies of the plan will be available.

For more information about this project, visit our park website:  
[http://www.nps.gov/yose/parkmgmt/tioga\\_rehab.htm](http://www.nps.gov/yose/parkmgmt/tioga_rehab.htm)