

Stock Site Evaluation Project Smith Meadow

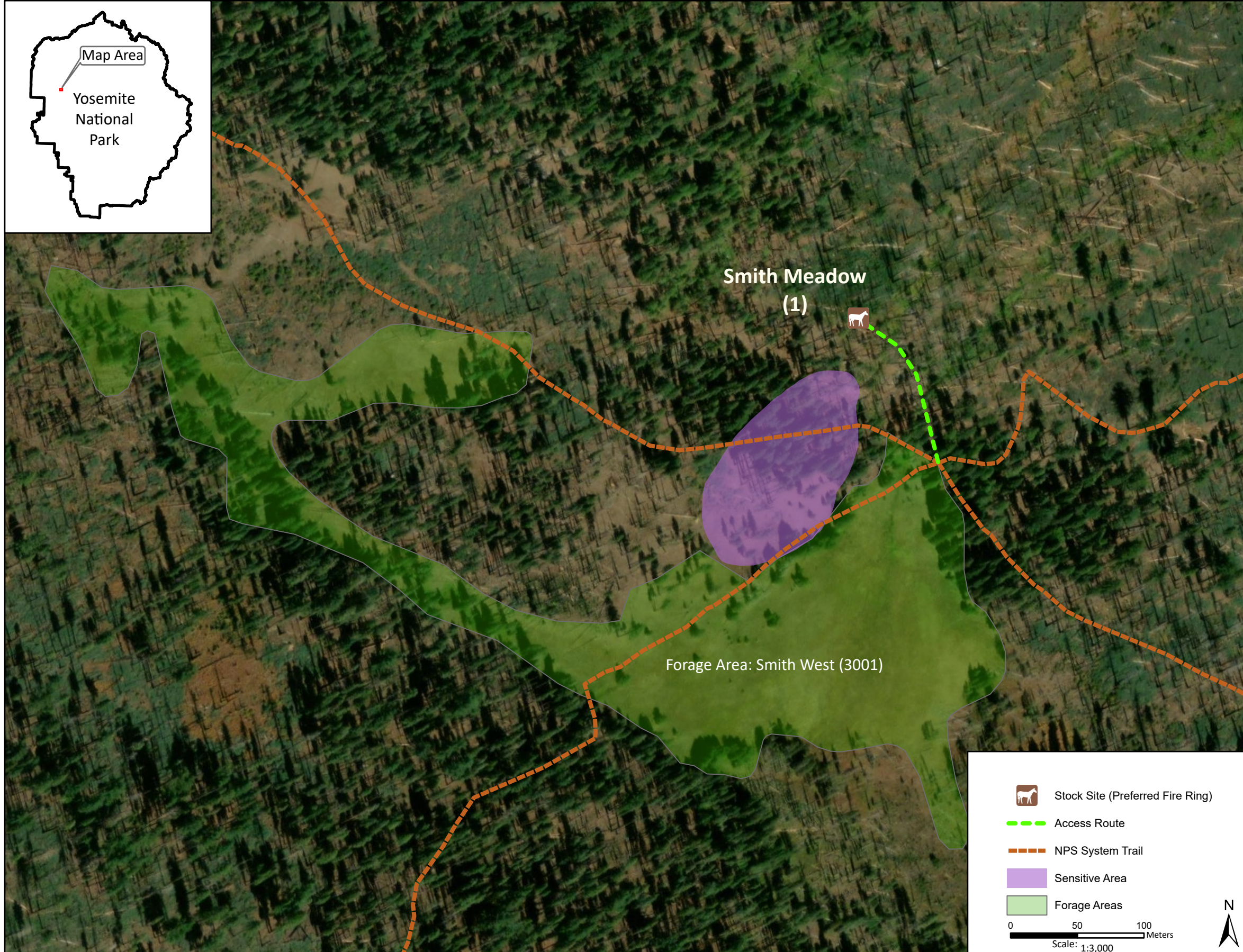
Yosemite National Park
California

National Park Service
U.S. Department of the Interior



Forage Area: Smith West (3001) - Meadow south of camp and surrounding understory can be used for grazing.

Annual Grazing Capacity: 33 stock use nights



Smith Meadow

Camp ID: 1

Fire Ring: 257,822mE x 4,200,809mN

Handling Practices: The access route starts from the trail junction and heads northwest approximately 120 m to the fire ring. The unloading area is at the fire ring and no preferred holding area has been established. Do not hold stock or camp in the sensitive resource area indicated on the map, due to concerns about stock use causing potential impacts.