

Stock Site Evaluation Project Miguel Meadows Ranger Cabin

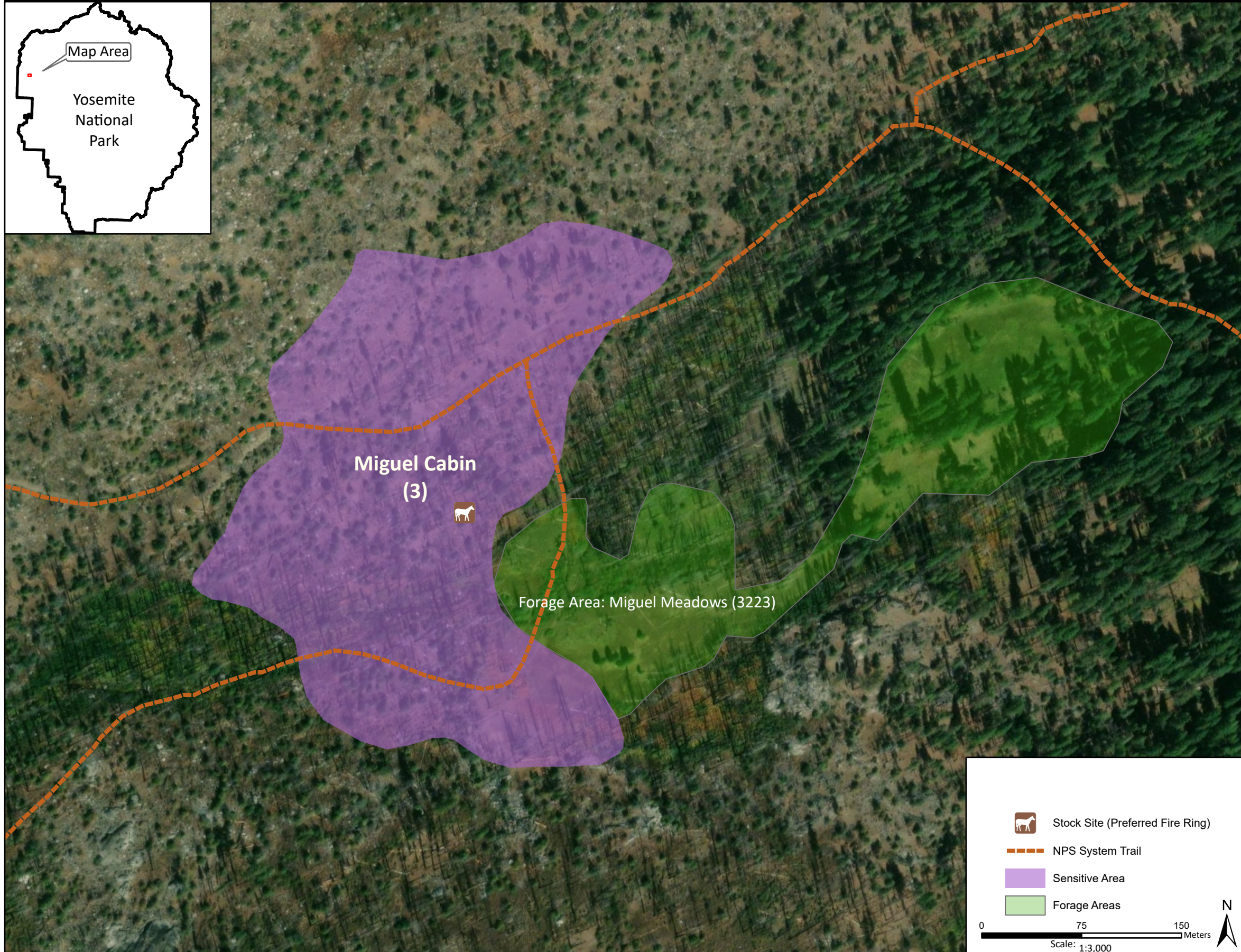
Yosemite National Park
California

National Park Service
U.S. Department of the Interior



Forage Area: Miguel Meadows (3223) and the surrounding understory can be used for grazing.

Annual Grazing Capacity: 12 stock use nights



Miguel Cabin

Camp ID: 3
Fire Ring: 250,340mE x 4,205,193mN
Handling Practices: The site was heavily damaged in 2013 by the Rim Fire and many of the former structures that would support stock use, including the barn and corral close to the meadow, have been destroyed. The area is dangerous due to many standing dead trees. Consider using stock site at Laurel Lake instead of Miguel Meadows. If not feasible, find existing fire ring and concentrate stock use in previously disturbed areas used for the former campground.