

Stock Site Evaluation Project Laurel Lake - Beehive

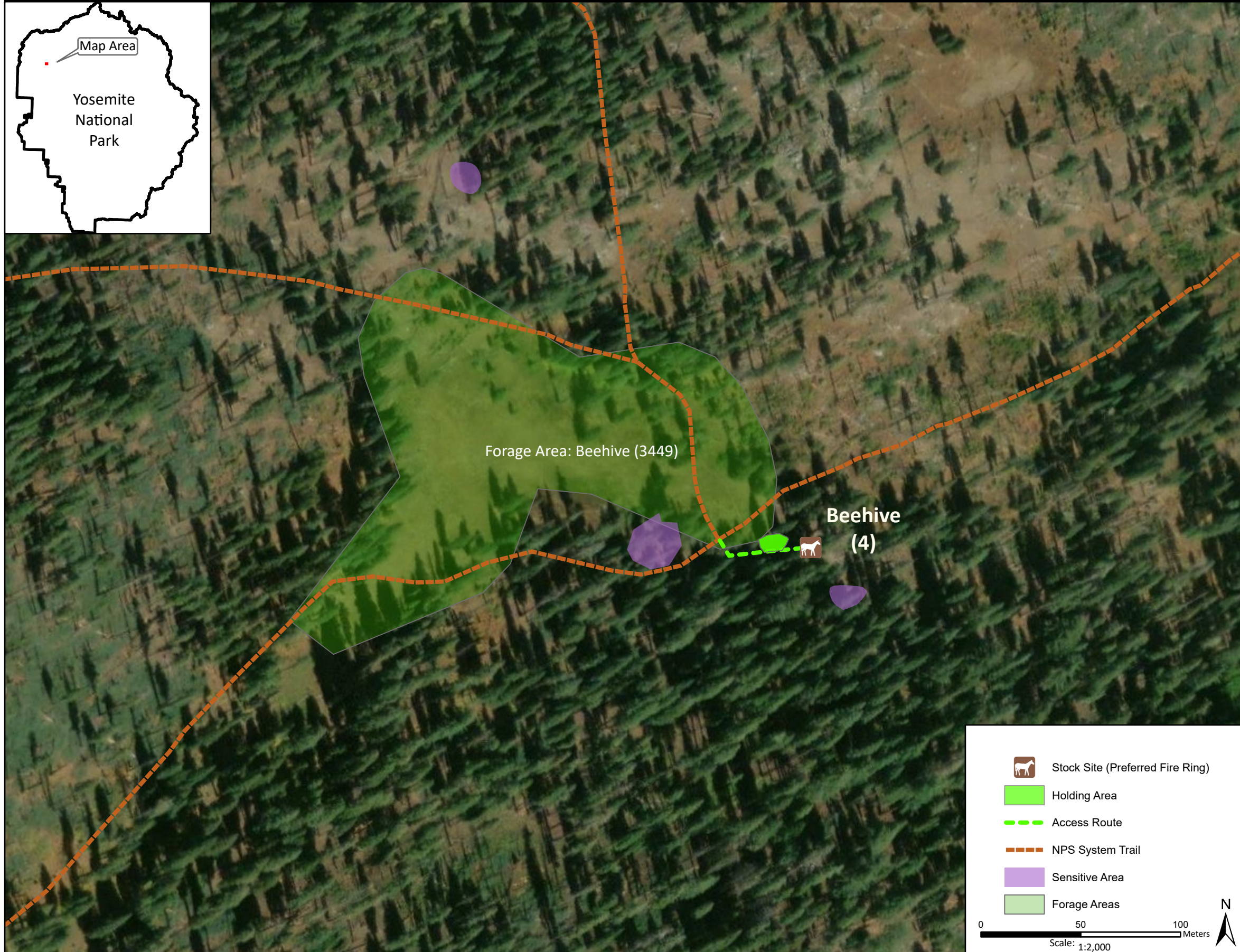
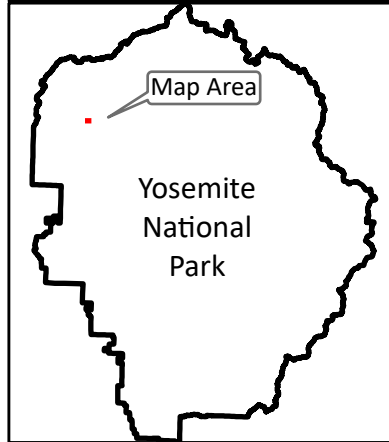
Yosemite National Park
California

National Park Service
U.S. Department of the Interior



Forage Area: Beehive (3449) - Beehive Meadow and the surrounding understory can be used for grazing.

Annual Grazing Capacity: 40 stock use nights



Beehive

Camp ID: 4

Fire Ring: 256,205mE x 4,208,985mN

Handling Practices: The access route starts at the trail junction and heads 50 m east to the fire ring. The unloading area is at the fire ring. The holding area is 15 m west of the fire ring. Do not camp or hold animals in the flat area southeast of the fire ring due to concerns about stock use causing potential impacts to the sensitive resource in this location.