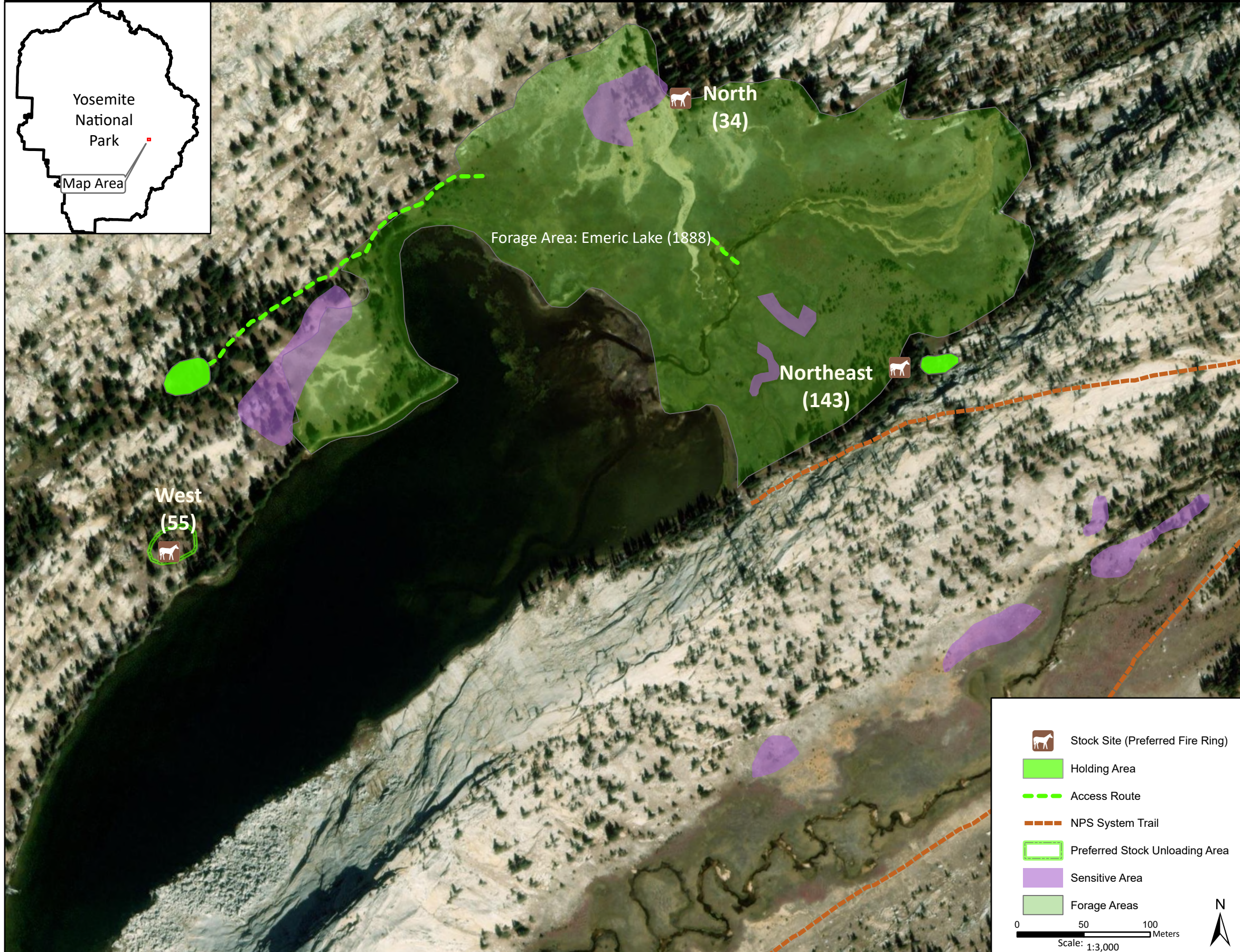
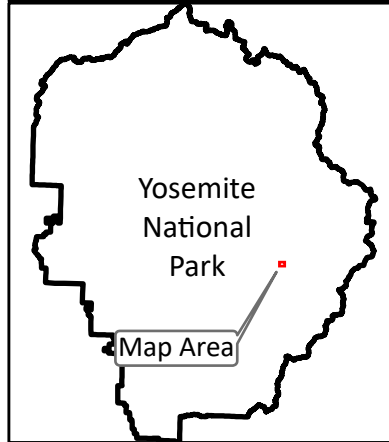


Stock Site Evaluation Project

Emeric Lake West, North, and Northeast

Yosemite National Park
California

National Park Service
U.S. Department of the Interior



Forage Area: Emeric Lake (1888) - Large meadow and surrounding understory bordered by bedrock outcrops. Keep animals out of two sensitive resource areas (wetlands) shown on map southeast of the creek crossing.

Annual Grazing Capacity: 114 stock use nights

Emeric Lake - North

Camp ID: 34
 Fire Ring: 290,195mE x 4,184,159mN
 Handling Practices: This site is the third option at Emeric Lake and should be used as a drop camp. This is due to its proximity to sensitive resources. The fire ring is also too close to the seasonal drainage that feeds into the lake. Follow the NPS system trail to the meadow and cross the creek at location indicated on the map. Unload stock at the fire ring. Do not hold stock at this site.

Emeric Lake - West

Camp ID: 55
 Fire Ring: 289,811mE x 4,183,818mN
 Handling Practices: Follow NPS system trail to meadow and cross creek at location indicated on map. Avoid sensitive resource areas when releasing stock to graze, and when exiting the site.

Emeric Lake - Northeast

Camp ID: 143
 Fire Ring: 290,360mE x 4,183,960mN
 Handling Practices: Follow the NPS system trail to the meadow and head northeast along edge of bedrock to fire ring. Unload animals at fire ring and holding area is up the slope 10 m east on a bedrock outcrop.