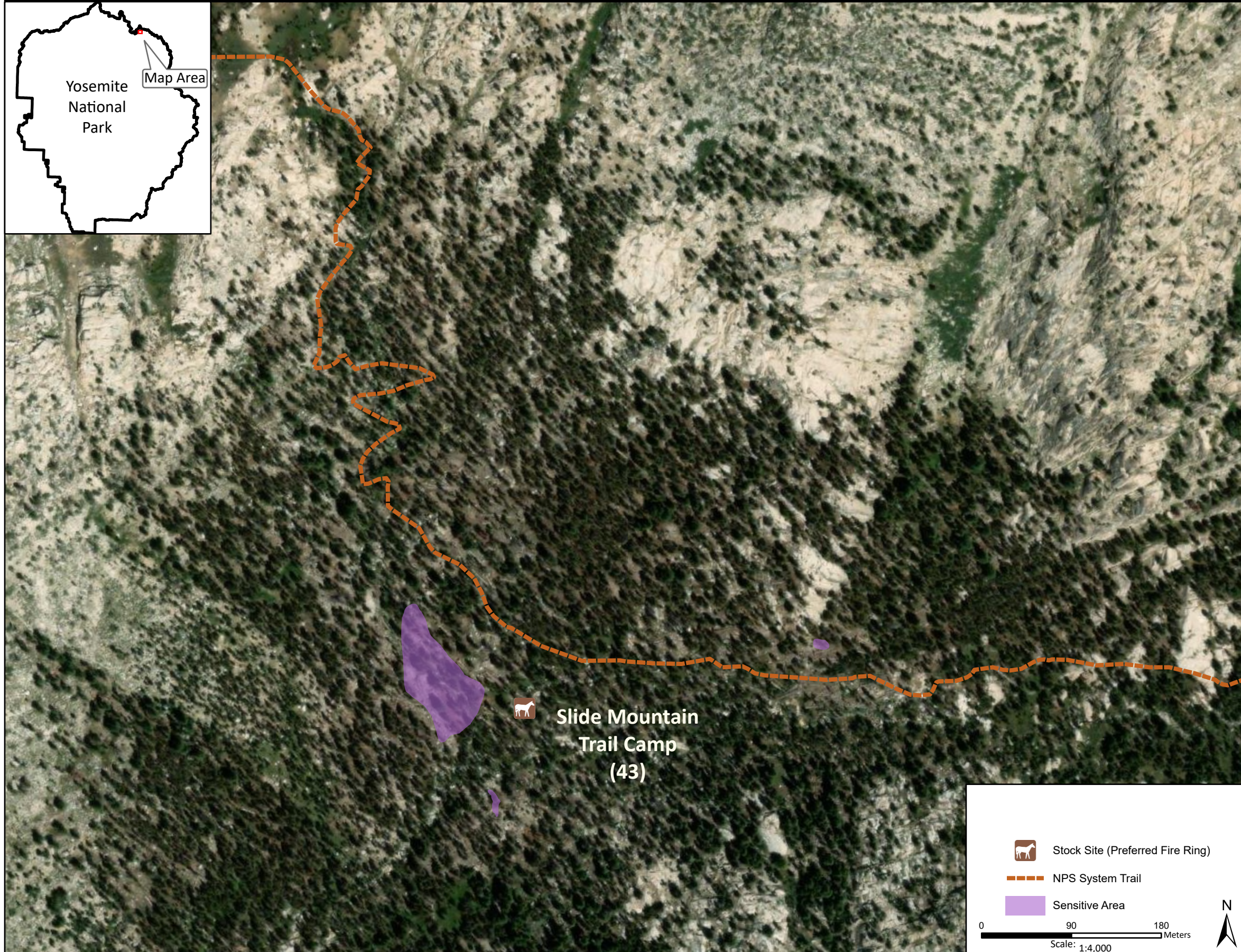


Stock Site Evaluation Project Slide Mountain Trail Camp

Yosemite National Park
California

National Park Service
U.S. Department of the Interior



Forage Area: There is limited understory forage at the site and a meadow area approximately 0.25 mile southwest of the camp between the the northeast edge of "The Slide" and the forest.

Annual Grazing Capacity: 6 stock use nights

Slide Mountain Trail Camp

Camp ID: 43

Fire ring: 287,095mE x 4,219,377mN

Handling Practices: This site is located close to the junction of Piute Creek and a tributary in the northern part of Slide Canyon. There is no delineated access route, but the fire ring is east of the tributary of Piute Creek and approximately 60 m south of the NPS system trail. The unloading area is at the fire ring. The holding area is east of the fire ring. Do not camp or hold animals west of the tributary of Piute Creek due to concerns about stock use causing potential impacts to sensitive resources west of the creek.