

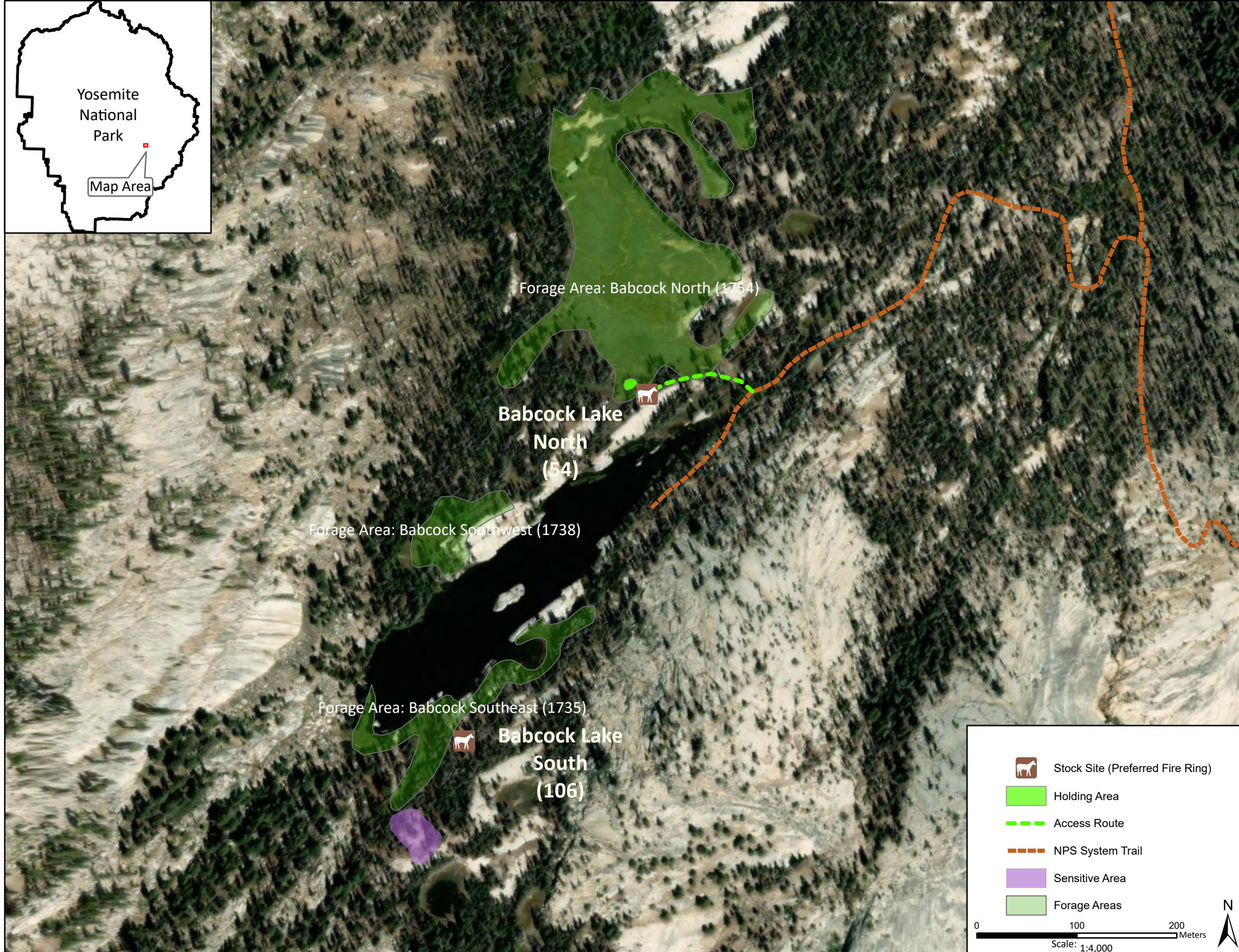
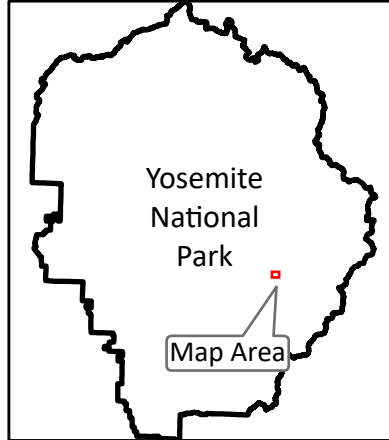
Stock Site Evaluation Project
Babcock Lake

Yosemite National Park
 California

National Park Service
 U.S. Department of the Interior



Forage Area: Babcock North (1754), Babcock Southwest (1738), Babcock Southeast (1735) - There is a large meadow north of Babcock Lake and a couple of small meadows on the west end of the lake.



Babcock Lake - North

Camp ID: 54
 Fire Ring: 289,012mE x 4,181,756mN
 Handling Practices: This site is at the north end of Babcock Lake on the northern edge of a bedrock outcrop and the southern edge of a meadow. The access route heads west from the northeast corner of the lake 100 m to the fire ring. The unloading area is at the fire ring and the holding area is 20 m northwest of the fire ring in a group of trees at the edge of the meadow.

Annual Grazing Capacity: 89 stock use nights

Babcock Lake - South

Camp ID: 106
 Fire ring: 288,829mE x 4,181,410mN
 Handling Practices: This site is located at the southern end of Babcock Lake. The access route continues from the end of the NPS system trail for approximately 300 m along the eastern edge of the lake to the fire ring. The unloading area is at the fire ring. The holding area is 30 m northeast of the fire ring along the access route.

Annual Grazing Capacity: 6 stock use nights