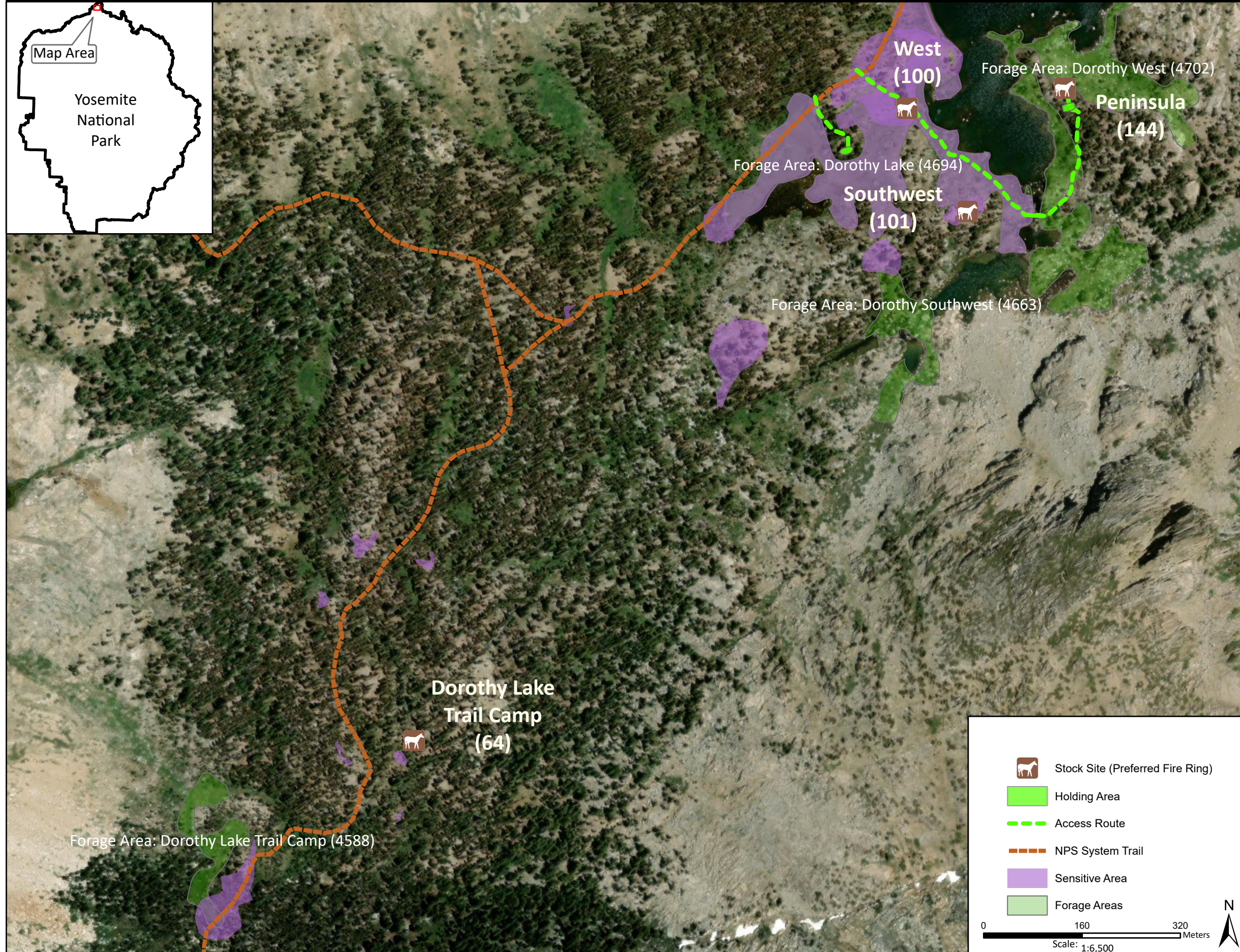
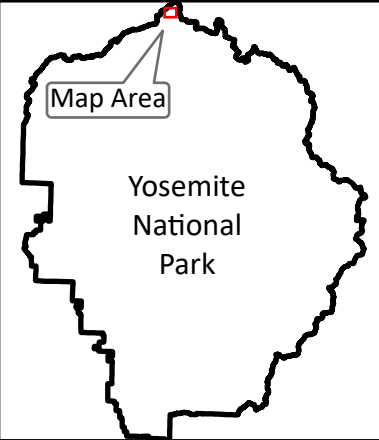


Stock Site Evaluation Project
Dorothy Lake Trail Camp

Yosemite National Park
 California

National Park Service
 U.S. Department of the Interior



Forage Area: , Dorothy Lake Trail Camp (4588) - The forage area for this site has not been investigated, though it is suspected that there is very limited understory forage in this area and one meadow is visible the aerial photography.

Annual Grazing Capacity: 12 stock use nights

Dorothy Lake Trail Camp

Camp ID: 64
 Estimated Location: 271,953mE x 4,227,235mN
 Handling Practices: This site location has not been verified. It was included in the list of Operator Specified stock sites, but no stock use has been documented here. The suspected site location is east of a small tributary of Falls Creek, but is west of Falls Creek itself. The access route is undefined. Stock groups should find an established fire ring that is not within the sensitive resource areas indicated on the map, due to concerns about stock use causing potential impacts. Stock should be held in previously disturbed areas close to the trail.