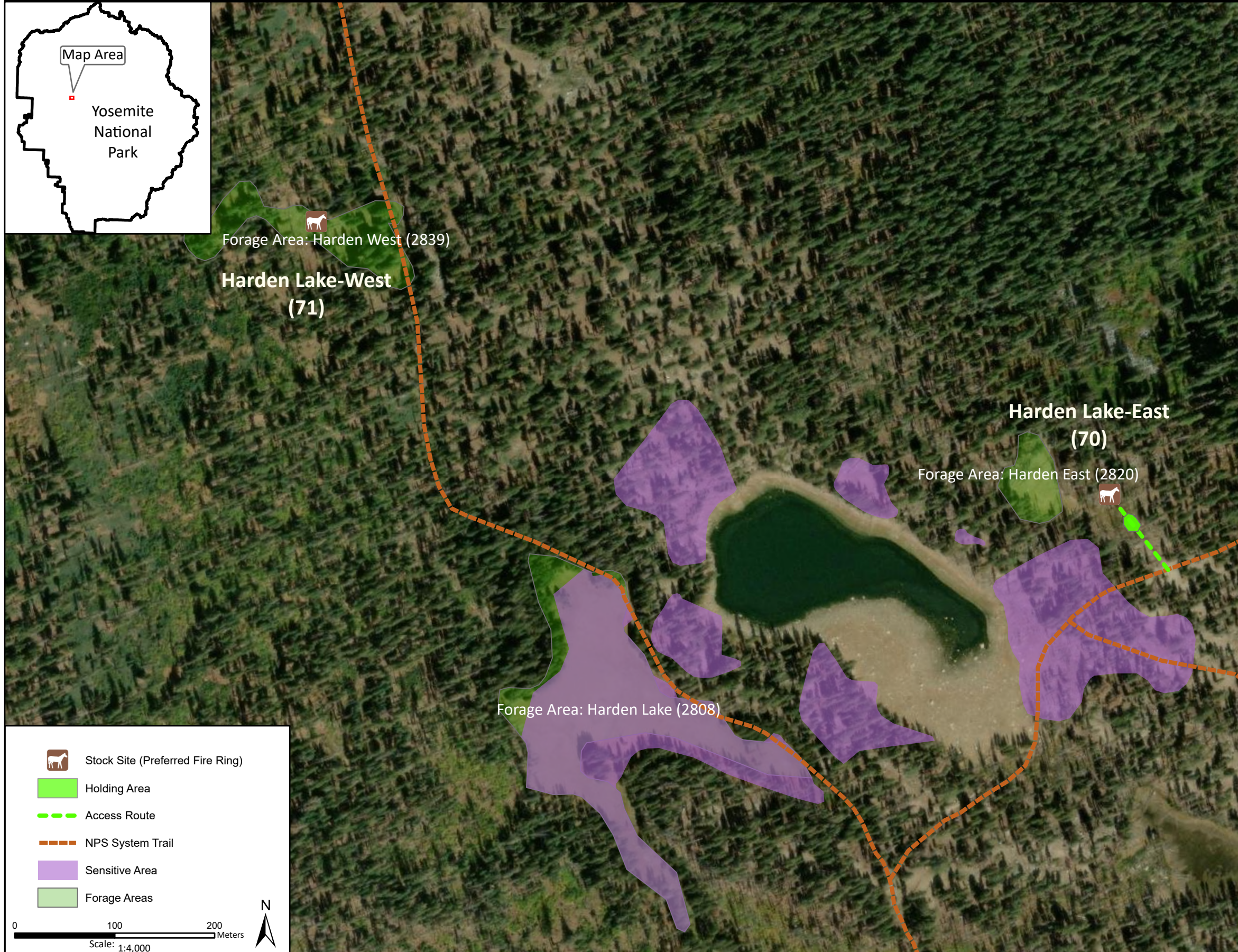


**Stock Site Evaluation Project
Harden Lake - East and West**

Yosemite National Park
California

National Park Service
U.S. Department of the Interior



Forage Area: Harden East (2820) and Harden West (2839) - There is limited understory forage surrounding the lake and a meadow to the southwest, though grazing in this meadow is prohibited due to concerns about stock use causing potential impacts to sensitive resources.

Harden Lake-East

Camp ID: 70
 Fire Ring: 264,977mE x 4,197,725mN
 Handling Practices: This site is on the east side of Harden Lake. The access route starts 100 m east of the NPS system trail junction and heads 80 m northwest to the fire ring. The unloading area is at the fire ring. The holding area is 20 m southeast of the fire ring. Do not camp or hold stock on the sensitive resource areas that surround the lake due to concerns about stock use causing potential impacts.

Annual Grazing Capacity: 12 stock use nights

Harden Lake - West

Camp ID: 71
 Estimated Location: 264,183mE x 4,197,998mN
 Handling Practices: This site location has not been verified, but is estimated to be approximately 0.3 mile northwest of Harden Lake and 80 m west of the NPS system trail. Do not camp or hold stock on the sensitive resource areas that surround the lake due to concerns about stock use causing potential impacts.

No annual grazing capacity has been set.