

Stock Site Evaluation Project McCabe Creek

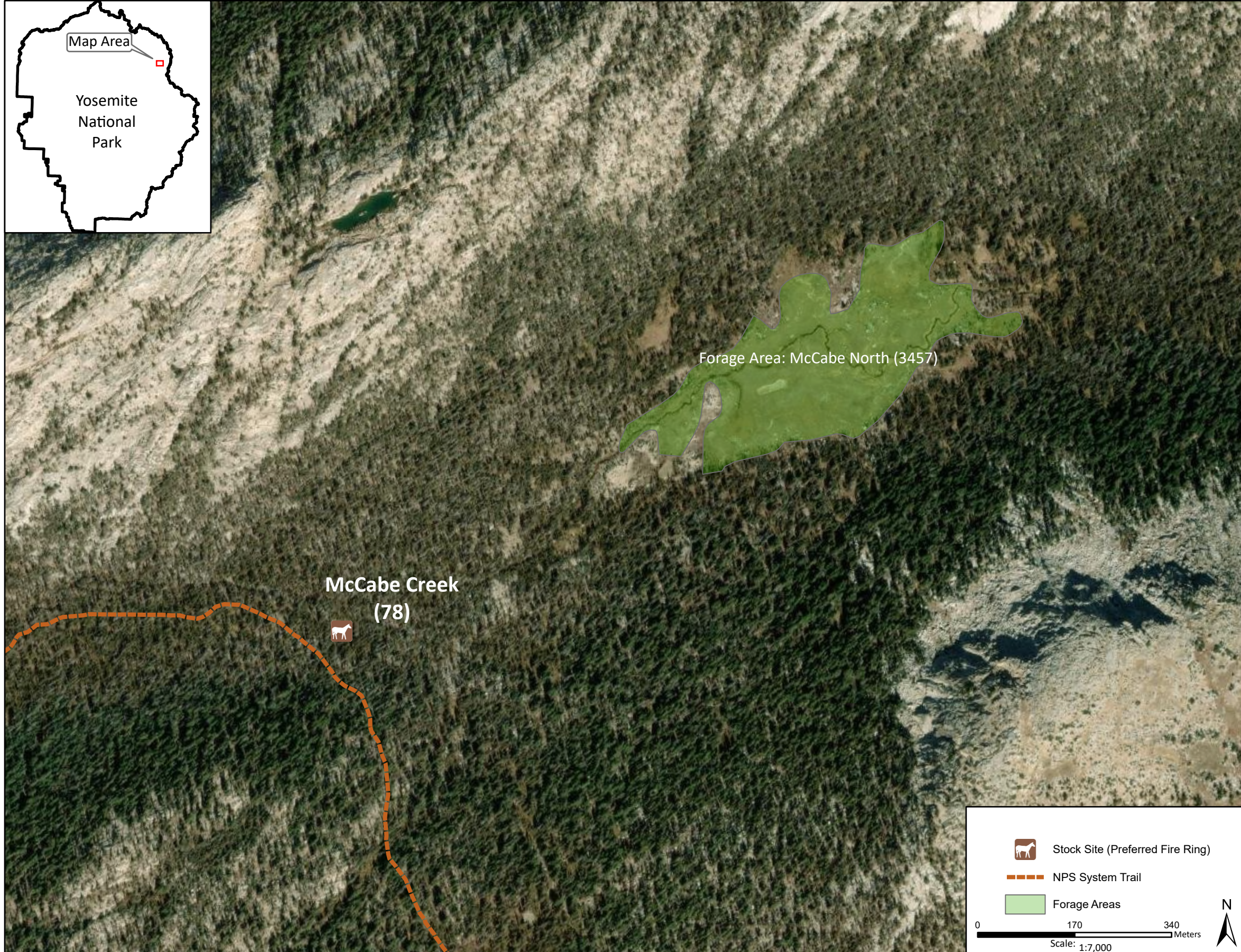
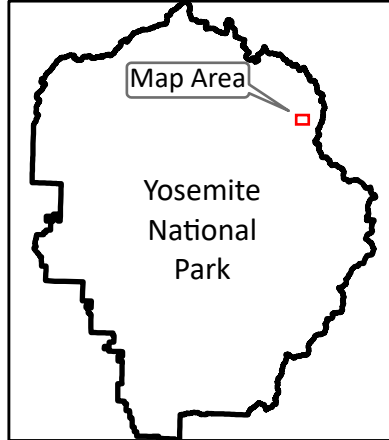
Yosemite National Park
California

National Park Service
U.S. Department of the Interior



Forage Area: McCabe North (3457) - There is very limited understory forage at and surrounding the site. There is a large meadow area 0.4 mile up the slope to the northeast.

No annual grazing capacity has been set.



McCabe Creek

Camp ID: 78

Fire Ring: 293,235mE x 4,208,590mN

Handling Practices: This site is approximately 0.5 mile down the slope northwest of Lower McCabe Lake. It is between the NPS system trail and the point where McCabe Creek joins with a tributary from the northeast. The fire ring is between the trail and the creek. The unloading area and holding area are at the fire ring.