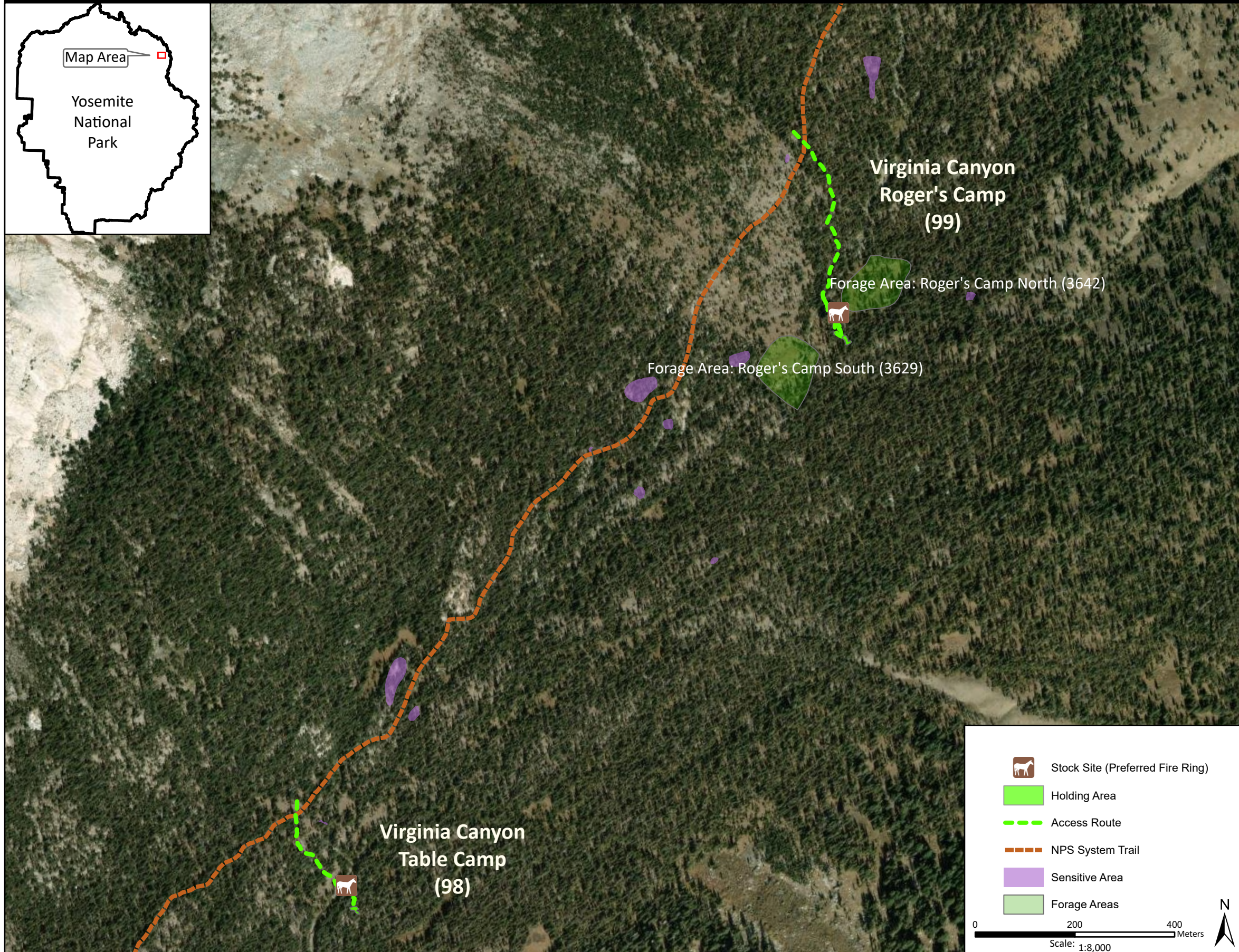


**Stock Site Evaluation Project**  
**Virginia Canyon - Table Camp and Roger's Camp**

Yosemite National Park  
 California

National Park Service  
 U.S. Department of the Interior



Forage Area: The forage areas are Roger's Camp North (3642) and Roger's Camp South (3629). There is also limited understory forage at and surrounding the sites.

**Virginia Canyon - Roger's Camp**

Camp ID: 99  
 Fire Ring: 294,855mE x 4,212,532mN  
 Handling Practices: This site is located in Virginia Canyon approximately 0.5 mile south of the junction with the trail to Summit Lake. The access route heads southeast from the NPS system trail approximately 0.25 mile to a creek crossing that is approximately 15 m west of a junction of two tributaries of Return Creek. The fire ring is approximately 30 m east of the creek. The unloading area is at the fire ring. There are three potential holding areas. One is 20 m west of the fire ring. The second is up the slope approximately 50 m southeast of the fire ring.

Annual Grazing Capacity: 6 stock use nights

**Virginia Canyon - Table Camp**

Camp ID: 98  
 Fire Ring: 293,868mE x 4,211,382mN  
 Handling Practices: This site is located in Virginia Canyon approximately 1.3 miles northeast of where the Pacific Crest Trail crosses Return Creek. The access route heads southeast from the NPS system trail approximately 200 m to a stable creek crossing approximately 50 m of the point where two tributaries of the creek merge. The fire ring is on the east side of the creek. The unloading area is at the fire ring. The holding area is approximately 40 m southeast of the fire ring.

Annual Grazing Capacity: Supplemental Feed Only