

# Stock Site Evaluation Project Halfmoon Meadow

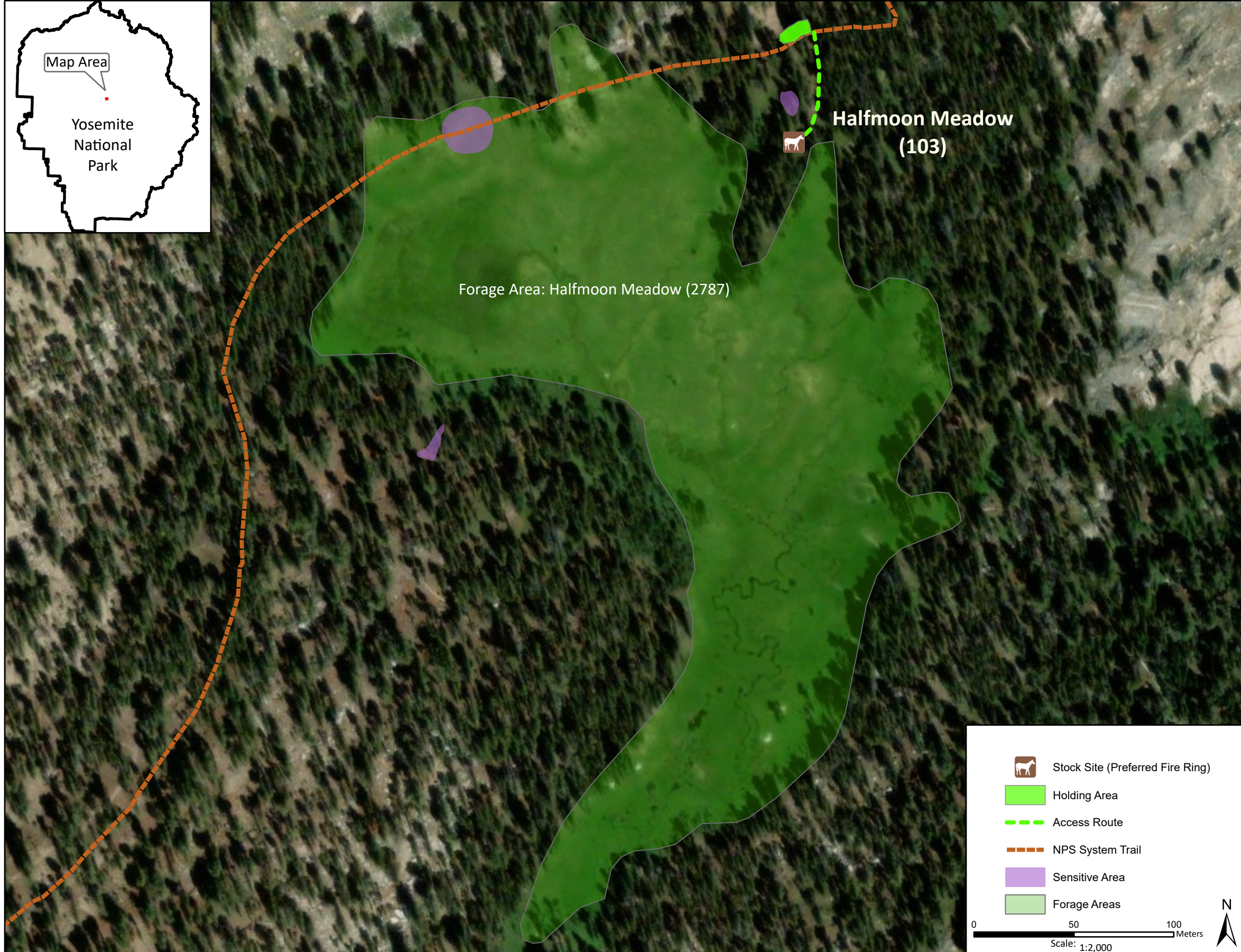
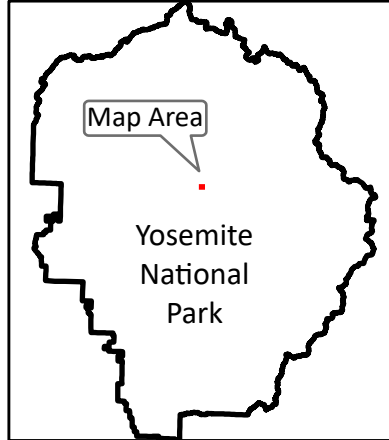
Yosemite National Park  
California

National Park Service  
U.S. Department of the Interior



Forage Area: Halfmoon Meadow (2787) is located south of the site.

Annual Grazing Capacity: 12 stock use nights



## Halfmoon Meadow

Camp ID: 103

Fire Ring: 276,154mE x 4,197,235mN

Handling Practices: This site is located at the north end of Halfmoon Meadow just before the trail heads up the slope toward Ten Lakes. The access route heads approximately 50 m south of the NPS system trail to the fire ring. The unloading area is at the fire ring. The holding area is north of the trail at the start of the access route. Do not camp or hold stock on the sensitive resource area shown on the map due to concerns about stock use causing potential impacts.