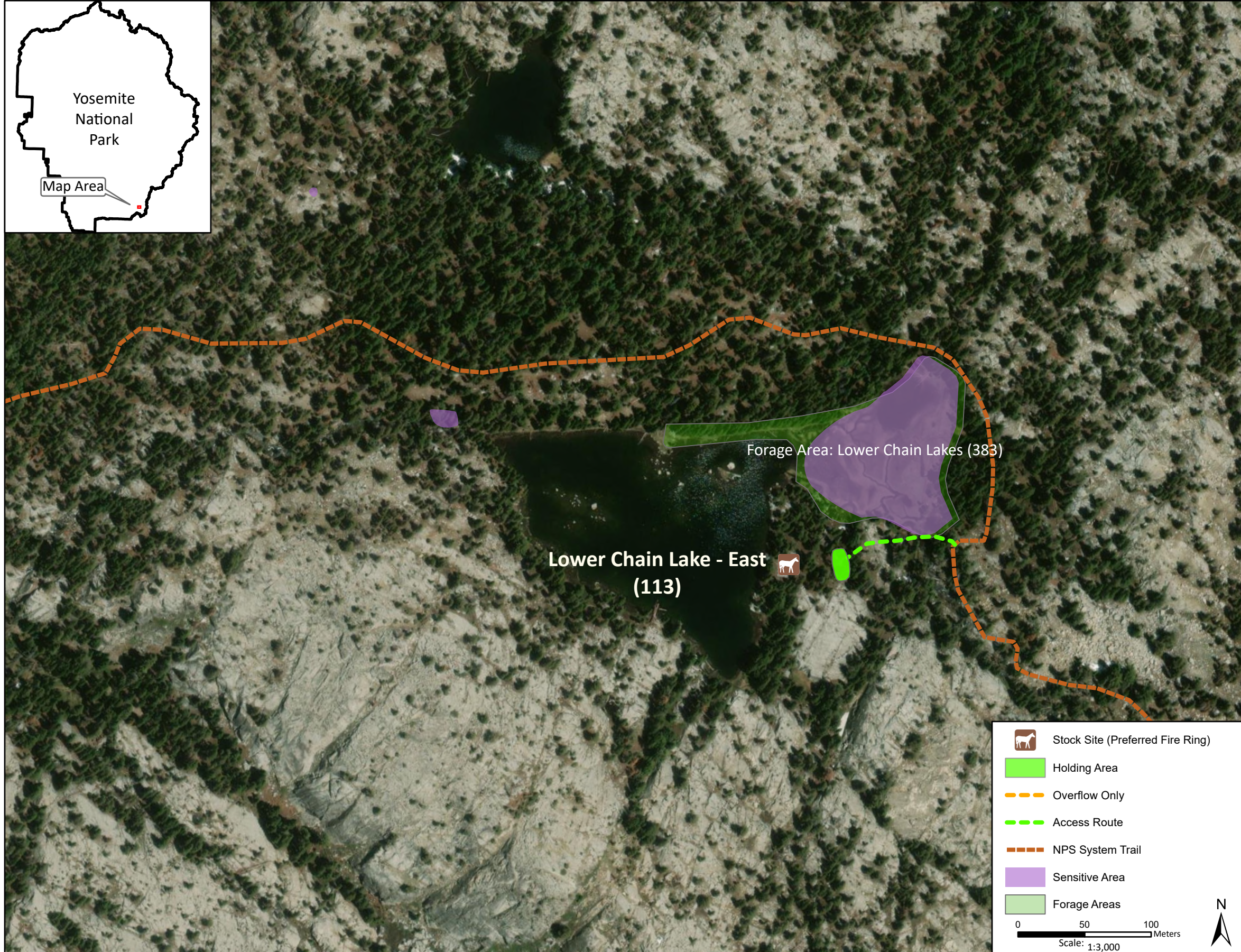
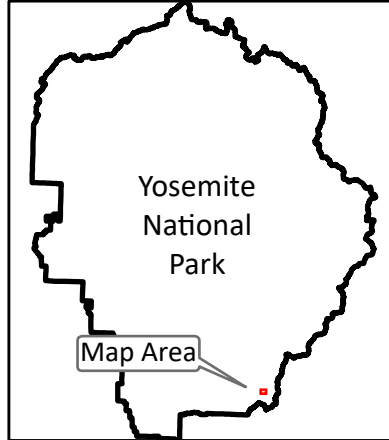


Stock Site Evaluation Project Lower Chain Lake East

Yosemite National Park
California

National Park Service
U.S. Department of the Interior



Forage Area: Lower Chain Lakes (383) - Meadow and surrounding understory forage on east side of lake. This meadow is wet for part of the season and should not be used for grazing until it is dry. Otherwise operators should bring supplemental feed, or use the site as a drop camp.

Annual Grazing Capacity: 25 stock use nights

Lower Chain Lake - East

Camp ID: 113

Fire Ring: 286,973mE x 4,161,060mN

Handling Practices: There are multiple camping spots at Middle and Upper Chain Lakes that can be used as drop camps. This is due to the lack of suitable camping areas and little to no forage at the other lakes. The access route heads west from the NPS system trail and crosses a creek that feeds into the lake. The unloading area is at the fire ring, which sits on a flat area that overlooks the lake. The holding area is 30 m east of the fire ring.