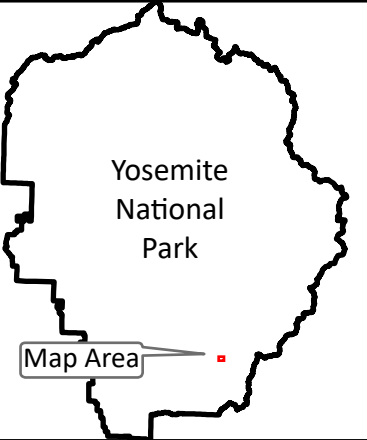
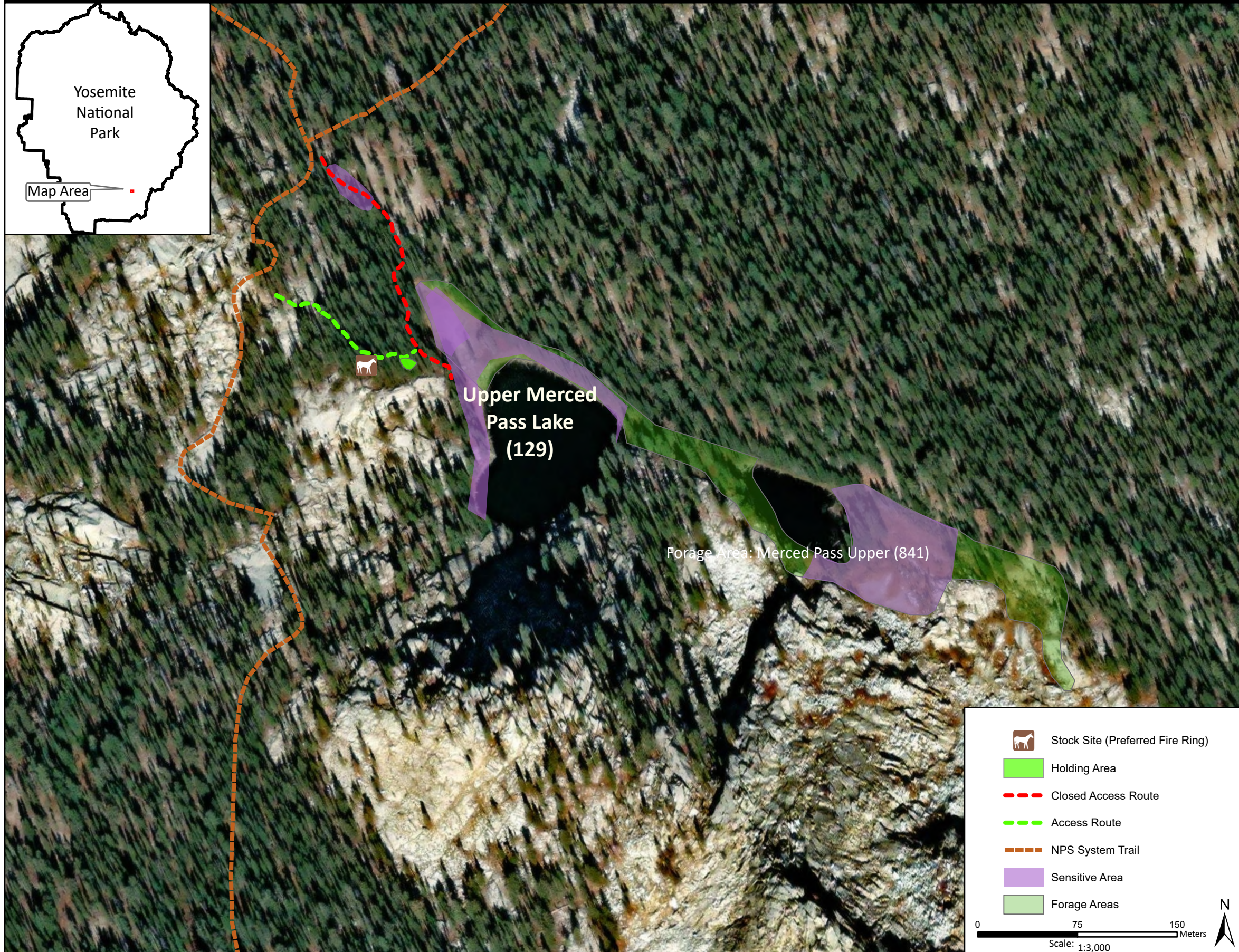


# Stock Site Evaluation Project Upper Merced Pass Lake

Yosemite National Park  
California

National Park Service  
U.S. Department of the Interior



Forage Area: Merced Pass Upper (841) - There is limited understory forage at and surrounding the site. There is a small meadow on the north end of the lake. However, grazing is not recommended here due to concerns that stock use could potentially cause impacts to multiple sensitive resources in the area.

Annual Grazing Capacity: 8 stock use nights

## Upper Merced Pass Lake

Camp ID: 129

Fire Ring: 292,292mE x 4,210,115mN

Handling Practices: This site is located in the forested area on the north edge of a granite bedrock outcrop west of Upper Merced Pass Lake. The original access route started at the trail junction and headed to the site. However, do not use this route as it passes through multiple sensitive resources and stock use has the potential to cause impacts. The preferred access route starts approximately 150 m south of the trail junction and heads east along a path through the bedrock 75 m to the fire ring. The holding area is 30 m east of the fire ring.