

Stock Site Evaluation Project Lewis Creek

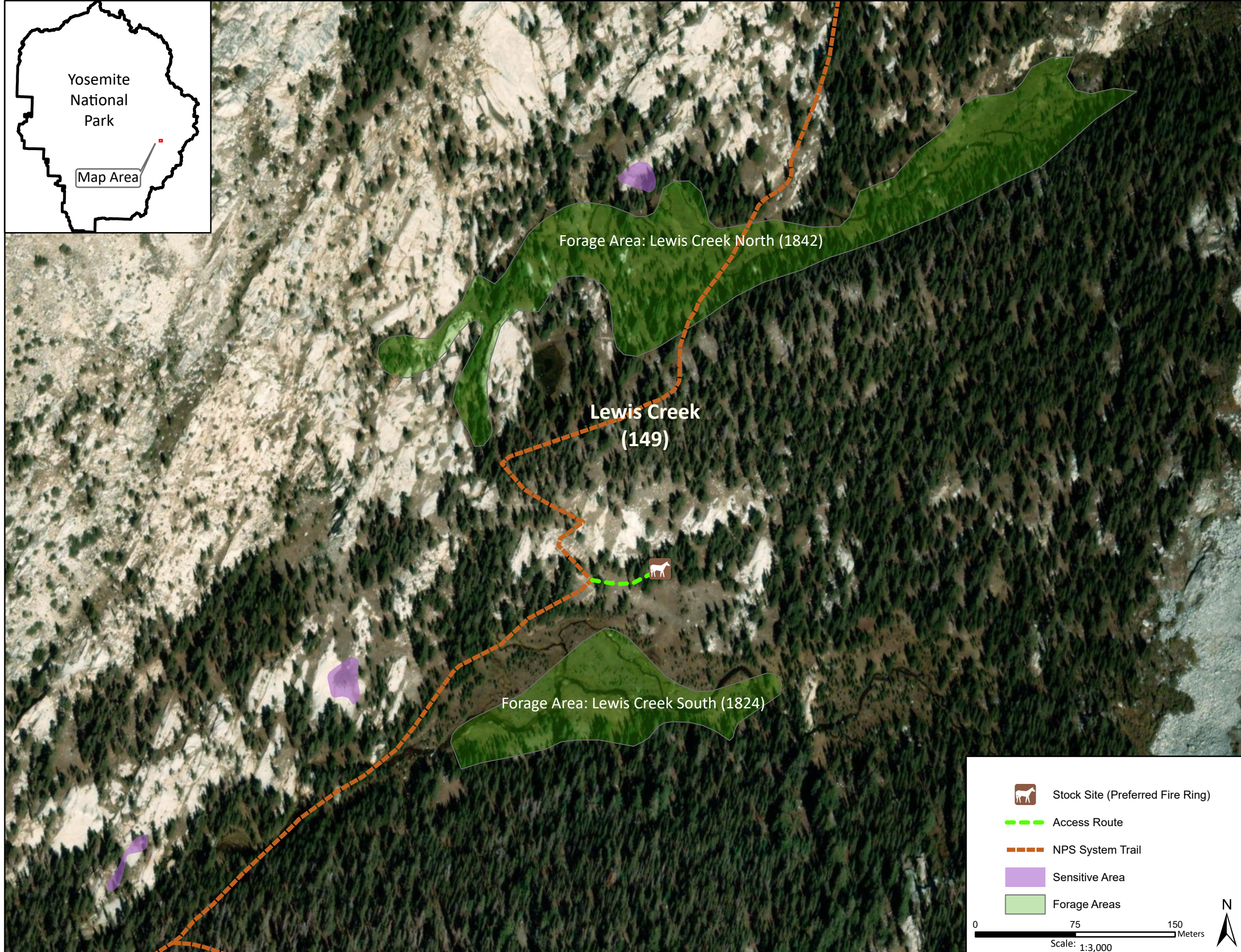
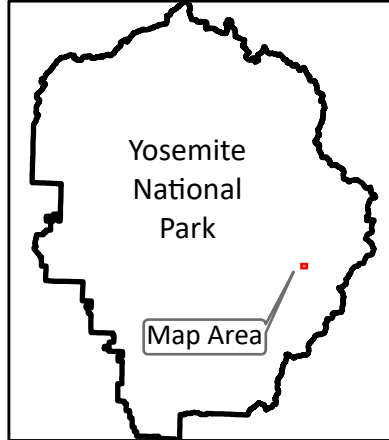
Yosemite National Park
California

National Park Service
U.S. Department of the Interior



Forage Area: Lewis Creek North (1842) and Lewis Creek South (1824) - There are large meadows north and south of the site.

Annual Grazing Capacity: 6 stock use nights



Lewis Creek

Camp ID: 149

Fire Ring: 294,052mE x 4,183,079mN

Handling Practices: This site is located on the northern edge of a meadow and the southern edge of a bedrock outcrop approximately 0.25 mile northeast of the junction of the trail to Bernice Lake. The access route heads east along the northern edge of the meadow for 50 m to the fire ring. The unloading area and holding area are at the fire ring.