



Search for trails and other things to do, navigate with the park map, view the event calendar, and find your next park. Download Yosemite ahead of time to access park information when you're offline.

Download from your device's app store: search "National Park Service."

### Get the Official National Park Service App

Pets are only permitted on paved walking and biking paths, in most campgrounds, and in parking areas. Pets must be leashed at all times. Properly dispose of pet waste. Service dogs are allowed anywhere that visitors can go. A service dog is trained to perform a specific task to assist a person with a disability. Emotional support, therapy, and companion animals are subject to pet regulations.

### Pets are NOT allowed on trails.



- Using drones
- Feeding or approaching wildlife
- Collecting plants and animals
- Hunting animals
- Picking up archaeological items, such as arrowheads
- Using metal detectors
- Driving vehicles into meadows
- Biking off of paved roads
- Camping outside of designated campgrounds
- Possession of weapons inside federal facilities
- Possession or using marijuana, including medical marijuana

### Prohibited activities include:

The National Park Service is dedicated to protecting Yosemite for the benefit and enjoyment of future generations. Regulations are in place to protect both visitors and park resources.

### Park Regulations

For a complete list of accessible services, exhibits, and recreational opportunities, download a Yosemite Accessibility Guide at [go.nps.gov/AccessYosemite](http://go.nps.gov/AccessYosemite)

### Accessibility

**Emergency Services**  
 In an Emergency: Call or Text 911  
 209/379-1992  
 Non-emergency dispatch line  
 209/372-4637; Open Mon to Fri, 9 am – 5 pm. Urgent care walk-ins: 209/372-0200 (press 1, then 1)  
**Road Conditions**  
 Call 209/372-1060 for 24-hour roadside assistance.  
**Roadside Assistance**  
 Check at the nearest open information center or hotel front desk, or visit [go.nps.gov/lost](http://go.nps.gov/lost) to report a lost item.  
**Lost & Found**

You are driving in wildlife habitat. Follow posted speed limits, drive carefully, and watch for animals crossing the road. "Red Bear, Dead Bear" signs on park roads mark places where bears have been hit.



## 21 bears were hit by vehicles in Yosemite in 2024.



# Yosemite Guide



Yosemite Falls



Yosemite Essentials

1



Park Map

2



Visitor Services

4



Transportation

6



Programs

8



Yosemite Valley Trails

10



# ? Yosemite Essentials



## Visiting in Spring

**It's still winter in many parts of Yosemite.**

Spring is a great time to explore Yosemite Valley, Wawona, and Hetch Hetchy. Higher-elevation areas of the park can still be covered in snow until late spring or early summer. Glacier Point Road and Tioga Road close each winter and may not open until late spring, depending on conditions.

Check the *Seasonal Closures* information below for more details. Turn to page 3 to learn about places to visit and things to do in Yosemite.

**Rivers, streams, and waterfalls are beautiful but deadly.**

Waterfalls and other moving water are at peak flow during spring snowmelt. Avoid severe injury or drowning: stay out of closed areas and use extra caution around flowing water. Rocks at the base of waterfalls and along rivers can be extremely slippery. Flowing water is icy cold, and currents are much stronger than they appear. Do not enter the water, and watch children carefully.



## Keep Bears Wild

### Store Food Properly

To a bear, "food" includes trash, toiletries, and anything else with a scent. All must be properly stored.

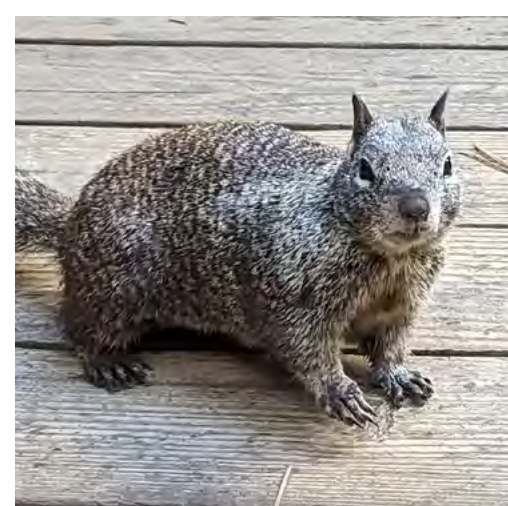
#### During the Day

While hiking or picnicking, always keep your food within arm's reach. When away from your vehicle, lock it and keep all windows closed, with food, drinks, and coolers hidden from sight. Never leave food in a truck bed or strapped to the outside of a vehicle.

#### At Night

Bears can easily break into vehicles. Food, trash, and other scented items may **NOT** be stored inside vehicles overnight. These items must be kept inside a food locker or in a hotel room or hard-sided cabin with doors and windows closed. Food may also be stored inside a completely hard-sided RV with all windows and doors closed.

*If you see a bear in the park, email [yose\\_bear\\_mgmt@nps.gov](mailto:yose_bear_mgmt@nps.gov) or call the Save-a-Bear hotline at 209/372-0322. To learn more about food storage and bears, visit [KeepBearsWild.org](http://KeepBearsWild.org).*



**It is illegal to approach or feed any wild animal.**

Wildlife can cause injuries and transmit diseases. Human food is unhealthy for wild animals. Animals used to being fed can become dangerous and be killed as a result.

## Seasonal Closures

Seasonal opening dates are different each year, depending on conditions and staffing.

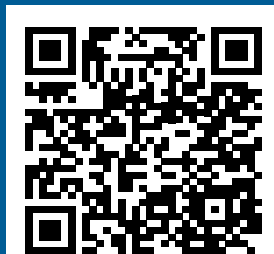
### Visitor Services

• **The welcome center in Yosemite Valley is open year-round from 9 am – 5 pm.** Hours subject to change, depending on staffing. Other information centers remain closed until late spring or early summer.

• **Visitor services are very limited outside of Yosemite Valley, especially in winter and spring.** Turn to pages 4 & 5 for a list of visitor services in Yosemite.

• **Most campgrounds are NOT open year-round.** Opening dates and reservation windows vary: visit [go.nps.gov/campground](http://go.nps.gov/campground).

Visit [go.nps.gov/conditions](http://go.nps.gov/conditions) or scan the QR code for updated information on seasonal closures.



### Roads

• **Glacier Point Road:** closed to vehicles in winter. No pedestrian or bicycle access in spring during snow plowing. *Usually opens: May, if conditions allow.*

• **Tioga Road:** closed to vehicles in winter. No pedestrian or bicycle access in spring during snow plowing. There is no access to or from the east side of Yosemite when Tioga Road is closed. *Usually opens: late May or June, if conditions allow.*

• **Mariposa Grove shuttles are not in service.** The Mariposa Grove of Giant Sequoias can only be reached on foot. Turn to page 3 for more information.

• **Short-term road closures or chain restrictions** are possible during and after storms: call 209/372-0200 (press 1, then 1) to hear current road information.

### Trails

• **Four Mile Trail to Glacier Point** The upper section, starting below Union Point, closes in winter due to very hazardous conditions. *Usually opens: late May, if conditions allow.*

• **Mist Trail /John Muir Trail (JMT)** The stair section of the Mist Trail (between the lower JMT junction and the top of Vernal Fall) is closed in winter. *Usually opens: late March or April, depending on conditions.*

The section of the JMT between Clark Point and the Panorama Trail junction (the "Ice Cut") is closed in winter. *Usually opens: May, if conditions allow.*

When closures are in effect, follow the marked winter detour to reach Vernal and Nevada Falls. DO NOT enter closed areas. Turn to page 11 for a map and more information.

• **Half Dome Cables** are down for the season. *Usually up: late May, if conditions allow.* A permit is required when cables are up: visit [go.nps.gov/HDpermits](http://go.nps.gov/HDpermits).

Other trails in Yosemite remain open year-round but may be inaccessible during seasonal road closures—or hazardous to travel due to snow and ice. Ask a park ranger about trail conditions before you go. Updates can also be found at [go.nps.gov/wildconditions](http://go.nps.gov/wildconditions).

### Tioga Road Updates

Check how Tioga Road reopening operations are going at [go.nps.gov/tioga](http://go.nps.gov/tioga)





# ↗ \* Park Map

🚗 Check for road closures and tire chain restrictions. Call 209/372-0200 (press 1, then 1) to hear current information about roads in Yosemite.



There are only two gas stations inside the park and **NO GAS** in Yosemite Valley. Turn to page 7 for more information about fuel & EV charging.

- Gas Station
- Campground visit [go.nps.gov/campground](http://go.nps.gov/campground)
- Information Center
- Entrance Station

## YOSEMITE VALLEY



View of Yosemite Falls from Cook's Meadow

Yosemite Valley is famous for its waterfalls, towering granite walls, and iconic features like El Capitan and Half Dome. The heart of the park, the Valley remains busy year-round and offers a variety of visitor services and things to do.

### 🚗 PARKING & TRANSPORTATION

Park at **Curry Village**, **Yosemite Village**, or **Yosemite Falls**. Use free shuttles to get around Yosemite Valley (page 6.)

### 📍 INFORMATION & EXHIBITS

Use Yosemite Village Parking or shuttle stops 1, 2, 4, or 5.

**Welcome Center** 9 am to 5 pm daily (as staffing allows.) *Maps, information, junior ranger booklets, lost & found, gifts.*

**Exploration Center & Theater** 9 am to 5 pm daily. *Exhibits, park film, bookstore.*

**Yosemite Museum** 10 am to 4 pm daily (as staffing allows.) *Indoor/outdoor exhibits, cultural demonstrations, gifts.*

### VISITOR SERVICES

Dining, shopping, & recreation. Turn to page 4 for hours & locations.

### THINGS TO DO

Scenic driving, hiking (pg 10), biking (pg 7), rock climbing, exhibits, talks & tours (pg 8), fishing, wildlife watching, art & photography.

### PLACES TO VISIT

Turn to pages 10 & 11 for a map of the Valley.

**Tunnel View** Visit by car; take in an iconic view of Yosemite Valley. From Yosemite Valley, follow signs for Wawona/Hwy 41. Park just before the tunnel.

**Bridalveil Fall** Visit by car; take a short stroll to the base of the waterfall.

**El Capitan Meadow** Shuttle stop 9; enjoy views of El Capitan and watch rock climbers in action.

**Cook's Meadow & Lower Yosemite Fall (Pg 10)** Shuttle stop 6. Scenic stroll through the heart of the Valley; see Yosemite Falls, Half Dome, the Merced River, and more.

**Yosemite Village (Pg 4)** Shuttle stops 1, 2, 4, & 5. Find park information, exhibits, dining, and shopping.

**Mirror Lake (Pg 10)** Shuttle stop 17. Hike or bike to a scenic lake at the base of Half Dome.

**Happy Isles** Shuttle stop 16. Stroll by the Merced River in this quiet corner of the Valley. On weekdays, stop by the Art & Nature Center (opening April 14.)

Turn to page 11 for information about hiking in Yosemite Valley.

## WAWONA & MARIPOSA GROVE



Mariposa Grove of Giant Sequoias

Explore giant sequoias, meadows, and the South Fork Merced River near Yosemite's South Entrance.

### 🚗 GETTING HERE

From Yosemite Valley, drive south on the Wawona Road for 30 mi (48 km), or about one hour.

### 📍 INFORMATION & EXHIBITS

**Wawona Visitor Center** closed

**Yosemite History Center** open daily

### VISITOR SERVICES

Gas available 24 hours. Other services very limited: turn to page 5.

### PLACES TO VISIT

**Yosemite History Center** Explore buildings, carriages, and an historic bridge from the early days of tourism in Yosemite. Outdoor exhibits open daily.

**Wawona Meadow Loop** Starting across from the Wawona Hotel, enjoy a mostly-flat, dog-friendly 3.5-mile loop around the scenic meadow. Trail may be snowy or muddy.

**Mariposa Grove of Giant Sequoias** Visit Yosemite's largest sequoia grove. Seasonal shuttles are not yet in service, and the grove can only be reached on foot. From the parking area, hike 2 mi/3 km one-way, with 500 ft/150 m of elevation gain, up the road or the Washburn Trail to reach the front of the grove. Enjoy many miles of hiking trails through the grove itself. Trails may still be snowy in early spring.

## GLACIER POINT

**Glacier Point Road is closed from approximately November to May.**

Call 209/372-0200 (press 1, then 1) to hear current information about roads in Yosemite.

## TIOGA ROAD & TUOLUMNE MEADOWS

**Tioga Road is closed from approximately November to May or June.** There is NO access to or from the east side of the park. Call 209/372-0200 (press 1, then 1) to hear current information about roads in Yosemite.

## CRANE FLAT



Tuolumne Grove of Giant Sequoias

Hike to two quiet sequoia groves near the Big Oak Flat Entrance. Trails may be snowy in early spring.

### 🚗 GETTING HERE

Located 16 mi/26 km, or 30 minutes from Yosemite Valley, on Big Oak Flat Road.

### 📍 INFORMATION & EXHIBITS

**Big Oak Flat Information Station** closed for the season

### VISITOR SERVICES

Gas available 24 hours.

### PLACES TO VISIT

**Tuolumne Grove of Giant Sequoias** The trailhead and limited parking are located on Tioga Road just north of the intersection at Crane Flat. Hike 1 mi/1.6 km down to the grove and enjoy a 0.5-mi/0.8-km loop around the nature trail at the bottom. Return the same way (500 ft/150 m of elevation gain.)

**Merced Grove of Giant Sequoias**

Yosemite's smallest and quietest sequoia grove. The trailhead and very limited parking are located on Big Oak Flat Road, 3.5 mi/5.6 km west of the intersection at Crane Flat. Hike 1.5 mi/2.4 km down to the grove (elevation gain of 520 ft/160 m on return.)

## HETCH HETCHY



Hetch Hetchy Reservoir

Walk across the O'Shaughnessy Dam, hike along the reservoir, or access Yosemite's Wilderness. Pick up a free map brochure at the entrance station for information about trails. Open sunrise to sunset only.

### 🚗 GETTING HERE

Located 38 mi (61 km) or 1.5 hours from Yosemite Valley. Take Big Oak Flat Road to the Big Oak Flat Entrance. Just after exiting the park, turn right on Evergreen Road. Follow signs to Hetch Hetchy entrance. *Vehicles and trailers over 25 ft long and 8 ft wide are not permitted on the narrow, winding Hetch Hetchy Rd.*



# Visitor Services

Seasonal operating dates and hours are subject to change. Visit [TravelYosemite.com](http://TravelYosemite.com) for restaurant menus and more.

## YOSEMITE VALLEY



### YOSEMITE VALLEY LODGE 7

FOOD & BEVERAGE
<b>Base Camp Eatery</b> Breakfast: 6:30 am – 10:30 am; Lunch/Dinner: 11 am – 9 pm <i>Fast casual burgers, chicken, &amp; more. Indoor &amp; outdoor seating.</i>
<b>Starbucks Coffee</b> 6:30 am – 6:30 pm
<b>Mountain Room Lounge</b> Mon to Fri: 4:30 pm – 10 pm; Sat & Sun: 12 pm – 10 pm. <i>Beer on tap, cocktails, &amp; light bites. Indoor &amp; outdoor seating.</i>
<b>Mountain Room Restaurant</b> 5 pm – 10 pm (final seating at 9:30.) <i>Upscale casual steakhouse. Indoor seating. Reservations recommended: OpenTable.com.</i>
GIFTS & GROCERIES
<b>Gift Shop</b> 8 am – 10 pm. <i>Gifts &amp; limited grocery.</i>
OTHER SERVICES
<b>Tour &amp; Activity Desk</b> 7:30 am – 7 pm
<b>Pool</b> closed (opens late May)
<b>Bike Rentals</b> 10 am – 5 pm (8 am – 7 pm starting Apr 11) <i>ADA scooters and bicycles available by reservation: call 209/372-1208.</i>

### THE AHWAHNEE 3

FOOD & BEVERAGE
<b>Coffee Bar</b> 6:30 am – 10:30 am
<b>The Ahwahnee Bar</b> 11:30 am – 9 pm (closes 11 pm starting Apr 14.) <i>Beer on tap, cocktails, &amp; light bites.</i>
<b>Dining Room</b> Breakfast: 7 am – 10 am; Dinner: 5:30 pm – 9 pm. Lunch may be available; check local listings. <i>Fine dining. Appropriate attire required for dinner. Dinner reservations strongly recommended: 209/372-1489 or OpenTable.com.</i>
GIFTS
<b>Gift Shop</b> 8 am – 9 pm
<b>Sweet Shop</b> 7 am – 10 pm
<i>Parking at The Ahwahnee is valet-only during construction. Use shuttle stop 3.</i>

### RELIGIOUS SERVICES

**Yosemite Community Church (Yosemite Chapel)** Pastor Brent Moore  
Call 209/372-4831 or visit [YosemiteValleyChapel.org](http://YosemiteValleyChapel.org) for information.  
Weekly Sunday services: 9:15 am  
Annual Marriage Renewal Sunday: May 4 at 9:15am & 11am

### YOSEMITE VILLAGE 1 2 4 5

EXHIBITS & INFORMATION
<b>Yosemite Valley Welcome Center</b> 9 am – 5 pm, <i>subject to change</i>
<b>Yosemite Exploration Center &amp; Theater</b> 9 am – 5 pm
<b>Yosemite Museum</b> 10 am – 4 pm, <i>subject to change</i>
<b>Wilderness Center</b> 8 am – 5 pm (opens Apr 25, <i>subject to change</i> )
FOOD & BEVERAGE
<b>Degnan's Kitchen</b> Breakfast: 7 am – 11 am; Lunch: 11:30 am – 6 pm. <i>Peet's Coffee, deli sandwiches, &amp; grab-and-go items. Indoor &amp; outdoor seating. WiFi.</i>
<b>Village Grill</b> (opens Apr 25) 11 am – 6 pm. <i>Burgers, sandwiches, hot dogs, &amp; soft serve ice cream. Outdoor seating only.</i>
GIFTS & GROCERIES
<b>The Ansel Adams Gallery</b> 10 am – 4 pm (9 am – 5 pm starting Apr 1.) <i>Art, books, &amp; gifts. Photography classes listed on page 8.</i>
<b>Yosemite Conservancy Store (Welcome Center)</b> 9 am – 5 pm
<b>Yosemite Conservancy Bookstore (Exploration Center)</b> 9 am – 5 pm
<b>Yosemite Museum Store</b> 10 am – 4 pm, <i>may close for lunch</i>
<b>Village Store</b> 8 am – 9 pm (10 pm starting Apr 18.). <i>Groceries &amp; gifts.</i>
OTHER SERVICES
<b>Medical Clinic</b> 209/372-4637 (in an emergency, call 911.) Urgent care walk-ins: Mon – Fri, 1 pm – 3:30 pm.
<b>Bike Rentals</b> (opens Apr 11) 8 am – 7 pm
<b>Tour Kiosk</b> closed (book at <a href="http://TravelYosemite.com">TravelYosemite.com</a> or at the Yosemite Valley Lodge.)
<b>Garage</b> 8 am – 12 pm, 1 pm – 5 pm. <i>Propane available during regular operating hours. 24-hour roadside assistance: call 209/372-1060.</i>
<b>US Post Office</b> Mon – Fri: 8:30 am – 5 pm; Sat: 10 am – 12 pm; Sun: closed

### ADDITIONAL SERVICES

<b>Happy Isles Art &amp; Nature Center</b> (opens Apr 14) weekdays: 9 am – 4 pm. <i>Book classes at <a href="http://Yosemite.org/art">Yosemite.org/art</a>.</i>
<b>Yosemite Conservation Heritage Center</b> closed (opens late May)
<b>Housekeeping Camp Grocery</b> (opens Apr 4) 8 am – 8 pm. <i>Gifts &amp; limited grocery.</i>
<b>Housekeeping Camp Laundry</b> 8 am – 10 pm

### CURRY VILLAGE 14 19

FOOD & BEVERAGE
<b>Seven Tents Pavilion</b> Breakfast: 7 am – 10 am; Dinner: 5:30 pm – 8:30 pm. <i>Casual dining with hearty, homestyle meals. Indoor seating.</i>
<b>Peet's Coffee Corner</b> 6 am – 2 pm. <i>Coffee &amp; light breakfast. Indoor seating.</i>
<b>Bar 1899</b> 11:30 am – 10 pm. <i>Beer on tap, cocktails, &amp; light bites. Indoor seating.</i>
<b>Pizza Deck</b> 11 am – 10 pm. <i>Pizza whole &amp; by the slice. Outdoor seating.</i>
<b>Taqueria @ Meadow Grill</b> (opens Apr 11) 11:30 pm – 5:30 pm. <i>Tacos, burritos, &amp; other Mexican favorites. Outdoor seating.</i>
<b>Jennie's Ice Cream</b> closed (opens late spring)
GIFTS, GEAR, & GROCERIES
<b>Gift &amp; Grocery</b> 8 am – 9 pm (closes 10 pm starting Apr 18.)
<b>Yosemite Mountain Shop</b> 8 am – 8 pm. <i>Outdoor gear &amp; apparel.</i>
OTHER SERVICES
<b>Mountaineering School</b> (opens Apr 14) 8:30 am – 12 pm, 1 pm – 4:30 pm. <i>Guided hikes &amp; rock climbing lessons. Reservations recommended: 209/372-8344.</i>
<b>Bike Rentals</b> (opens Apr 11) 8 am – 7 pm
<b>Raft Rentals</b> closed (summer only)
<b>Tour Kiosk</b> closed (book at <a href="http://TravelYosemite.com">TravelYosemite.com</a> or at the Yosemite Valley Lodge.)
<b>Ice Rink</b> closed (winter only)
<b>Pool</b> closed for renovation
<b>Showers</b> 24 hrs

### WAWONA & MARIPOSA GROVE

<b>Wawona Visitor Center at Hill's Studio</b> closed for the season
<b>Yosemite Conservancy Bookstore (Wawona)</b> closed for the season
<b>Yosemite History Center</b> Open daily
<b>Wawona Store &amp; Pioneer Gift Shop</b> 8 am – 8 pm
<b>Yosemite Conservancy Depot (Mariposa Grove)</b> Opens in Apr, if conditions allow. 9 am – 5 pm daily.
<b>Wawona Hotel</b> closed during renovation. <i>No dining, recreation, or retail.</i>
<b>Wawona Post Office</b> Mon – Fri: 9 am – 1 pm, Sat: 9 am – 12 pm, Sun: closed
<b>Wawona Service Station</b> staffed 9 am – 6 pm. <i>Propane available during staffed hours only. Gas &amp; diesel available with 24-hour pay-at-the-pump.</i>

### GLACIER POINT & BADGER PASS SKI AREA

All services closed for the season.

### EL PORTAL

<b>El Portal Market</b> 9 am – 7 pm
<b>El Portal Service Station</b> staffed 8 am – 5 pm. <i>Gas &amp; diesel available with 24-hour pay-at-the-pump.</i>

### CRANE FLAT

<b>Big Oak Flat Information Station</b> closed for the season
<b>Yosemite Conservancy Bookstore (Big Oak Flat Information Station)</b> 9 am – 5 pm (closed Wed & Thurs)
<b>Crane Flat Gas &amp; Grocery Store</b> closed for the season. <i>Gas &amp; diesel available with 24-hour pay-at-the-pump.</i>

### TIOGA ROAD & TUOLUMNE MEADOWS

All services closed for the season.

### INTERNET ACCESS

**WI-FI** In Yosemite Valley: free public Wi-Fi is available in Yosemite Village at Degnan's Kitchen and the local branch of the Mariposa County Library. Registered hotel guests can also use Wi-Fi at The Ahwahnee, Yosemite Valley Lodge, and Curry Village.

In El Portal: free public Wi-Fi is available at the El Portal Market.

In Wawona: free public Wi-Fi is available at the local branch of the Mariposa County Library.

### CAMPING & LODGING

**CAMPING** Starting April 29, there is NO first-come, first-served camping in Yosemite. To reserve a campsite, visit [Recreation.gov](http://Recreation.gov) or call 877/444-6777.

#### Campgrounds open year-round:

- Upper Pines (by reservation only)
- Camp 4 (reservation required starting April 29)
- Wawona (reservation required starting April 15)
- Hodgdon Meadow (reservation required starting April 15)

*Additional campgrounds opening in spring and summer are available by reservation only. Visit [go.nps.gov/campground](http://go.nps.gov/campground) for projected opening dates and reservation booking windows.*

Sleeping overnight in a parking lot or on the side of the road is **NOT** permitted. Sleeping inside a vehicle is only allowed at a registered campsite.

For information about backpacking and wilderness permits, turn to page 10.

**LODGING** Lodging inside the park is operated by Yosemite Hospitality. Reservations may be made up to one year in advance and are strongly recommended. Book a stay online at [TravelYosemite.com](http://TravelYosemite.com) or by calling 888/413-8869.



# Transportation

## Yosemite Valley Shuttle System



Yosemite Valley shuttles are FREE and operate from 7 am to 10 pm daily. No ticket required.

### Valleywide Shuttle (green)

Serves ALL stops. Runs approx. every 22 – 32 min. Round-trip time of 1.5 hours.

### East Valley Shuttle (purple)

Serves east Valley destinations ONLY. Runs approx. every 18 – 22 min. Round-trip time of 50 min.

## Yosemite Valley Shuttle Stops

STOP	SHUTTLES	DESTINATION	AT THIS STOP
1		Yosemite Village Parking <i>ALL Shuttles.</i>	Parking, welcome center, Village Store.
2		Welcome Center <i>ALL Shuttles.</i>	Welcome center, Village Store, Exploration Center, museum, post office, shopping, dining.
3		The Ahwahnee <i>Valleywide Shuttle ONLY.</i>	Lodging, fine dining.
4		Degnan's Kitchen <i>Valleywide Shuttle ONLY.</i>	Welcome center, Village Store, Exploration Center, museum, post office, shopping, dining.
5		Exploration Center <i>Valleywide Shuttle ONLY.</i>	Exploration Center, museum, post office, gallery, wilderness center
6		Lower Yosemite Fall <i>Valleywide Shuttle ONLY.</i>	Trailheads, picnic area.
7		Camp 4, Yosemite Valley Lodge, Yosemite Falls Parking <i>Valleywide Shuttle ONLY.</i>	Parking, lodging, camping, trailheads, casual dining.
8		El Capitan Picnic Area <i>Valleywide Shuttle ONLY.</i>	Picnic area.

STOP	SHUTTLES	DESTINATION	AT THIS STOP
9		El Capitan Meadow <i>Valleywide Shuttle ONLY.</i>	Scenic area.
10		Cathedral Beach <i>Valleywide Shuttle ONLY.</i>	Picnic area.
11		Four Mile Trailhead <i>Valleywide Shuttle ONLY.</i>	Trailhead.
12		Housekeeping Camp & Yosemite Conservation Heritage Center <i>ALL Shuttles.</i>	Lodging (seasonal), laundry (seasonal), exhibits & programs (seasonal).
14		Curry Village—eastbound <i>ALL Shuttles.</i>	Parking, lodging, dining, gift & grocery.
15		Upper Pines Campground <i>ALL Shuttles.</i>	Pines campgrounds.
16		Happy Isles <i>ALL Shuttles.</i>	Trailhead, Art & Nature Center (seasonal.)
17		Mirror Lake <i>ALL Shuttles.</i>	Trailhead.
18		Lower Pines Campground <i>ALL Shuttles.</i>	Pines campgrounds.
19		Curry Village—westbound <i>ALL Shuttles.</i>	Parking, lodging, dining, gift & grocery.

**Pets are NOT allowed on shuttles.**  
Service dogs are legally permitted anywhere that visitors can go. Emotional support, therapy, and companion animals are subject to all pet regulations.

### Parking

In Yosemite Valley, use one of three main parking areas: **Curry Village** (14, 19), **Yosemite Village** (1), or **Yosemite Falls** (7). Parking can completely fill by late morning on weekends and holidays. Once you find a parking space, keep it. Walk, bike, or ride a shuttle to trailheads and other destinations.

*Park only in designated parking spaces or in a paved turnout, pulled completely off the road. Vehicles parked on vegetation or blocking traffic are subject to citation and may be towed.*

### Roadside Assistance

24-hour roadside assistance:  
call 209/372-1060

### Electric Vehicle Charging

EV charging is available at no cost, courtesy of Yosemite Hospitality.

### Yosemite Valley Locations

- The Ahwahnee (6) valet-only during construction
- Curry Village (20)
- Welcome Center (4)
- Yosemite Falls Parking (10)
- Yosemite Valley Lodge (8)

### El Portal Locations

- Market & Gas Station (2)

### Wawona Locations

- Wawona Store (24)

### Tuolumne Meadows Locations

- when Tioga Rd is open
- Tuolumne Meadows Store (4)

### Gas Stations

There are NO gas stations in Yosemite Valley.

- **El Portal Gas Station** *outside the park gate* 15 mi from Yosemite Valley (downhill)
- **Crane Flat Gas Station** 16.5 mi from Yosemite Valley (uphill)
- **Wawona Gas Station** 28 mi from Yosemite Valley (uphill)

Gas & diesel are available 24 hours with pay-at-the-pump (card only.) *Staffed hours on page 5.*

### Bicycling in Yosemite

**Where to Ride** Enjoy several miles of scenic, paved bike paths through Yosemite Valley. Bicycles are also allowed on park roads (cyclists must obey traffic laws.) **Bicycles are NOT allowed on hiking trails.** The speed limit on bike paths is 15 mph. Helmets are required by law for children under 18.

**Rentals** Bicycles are available for full-day and half-day rentals (turn to pages 4 & 5 for hours and locations.) Standard adult & children's bikes are first-come, first-served. Bikes with trailers are available at Yosemite Valley Lodge and Curry Village only. ADA bicycles are available by reservation: call 209/372-1208.

*E-bikes with two or three wheels, fully operable pedals, and electric motors less than 750 watts (1 horsepower) are allowed everywhere bicycles are allowed.*

### Bus & Shuttle Service

#### Travel to Yosemite via YARTS (\$)

The Yosemite Area Regional Transportation System (YARTS) is a public transit system that provides service into Yosemite. Enjoy year-round service from Merced and seasonal service from Sonora, Mammoth Lakes, and Fresno. Buses are air-conditioned, bike-friendly, wheelchair-accessible, and equipped for rider comfort. Save gas, save time, save money, by taking YARTS! For bus schedules and tickets, visit [www.YARTS.com](http://www.YARTS.com) or call 877/989-2787.

#### Yosemite Valley Shuttles (free)

Daily, year-round service. Refer to map at left.

#### Mariposa Grove Shuttle (free)

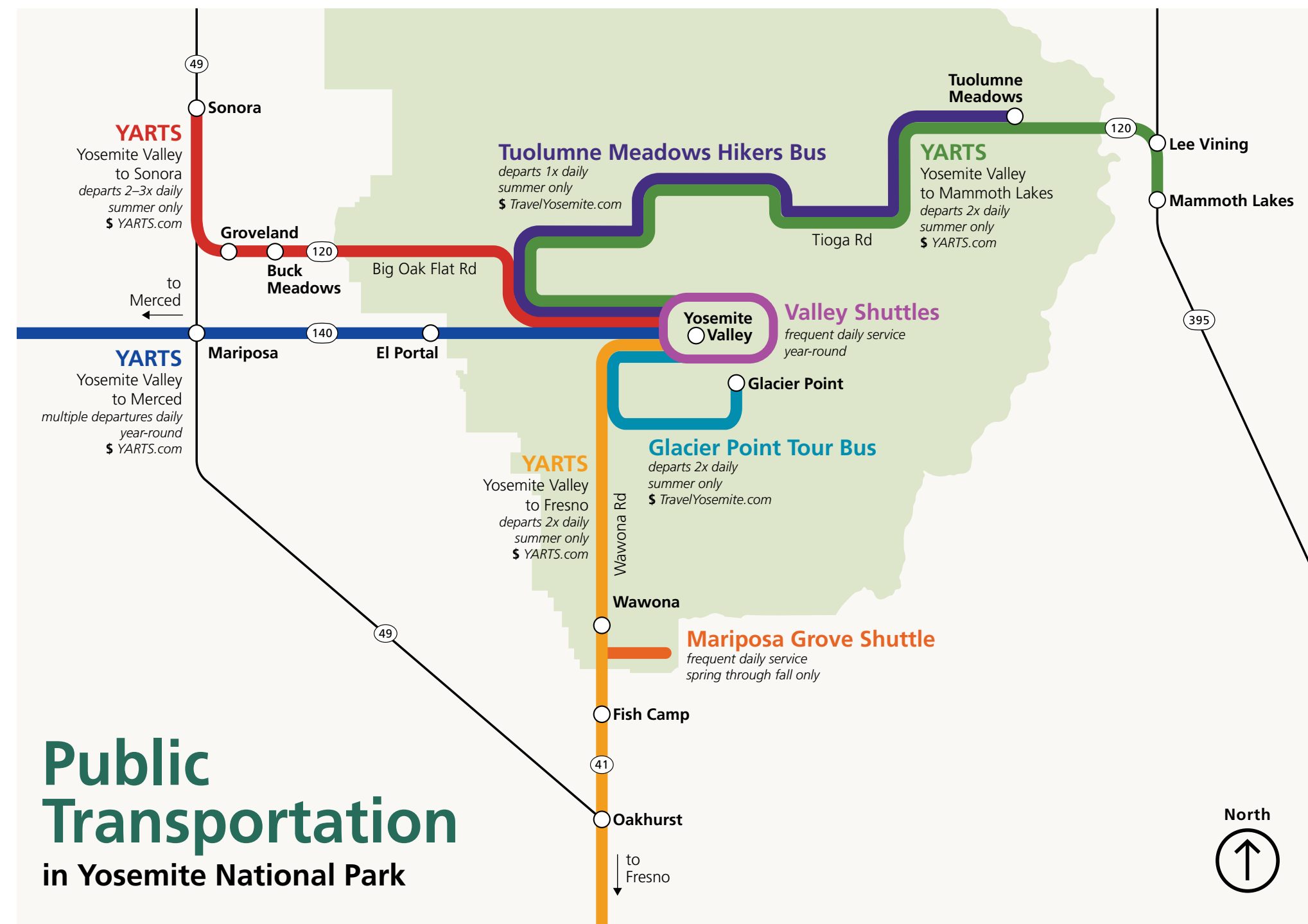
Seasonal shuttles are not yet in service, and the grove can only be reached on foot (turn to page 3.)

#### Tuolumne Meadows Hikers Bus (\$)

Summer only. Visit [TravelYosemite.com](http://TravelYosemite.com).

#### Glacier Point Tour Bus (\$)

Begins in May, if conditions allow. Visit [TravelYosemite.com](http://TravelYosemite.com) for details and tickets.



## Public Transportation in Yosemite National Park



# Programs



Enjoy wine, cheese, and watercolors at a Paint and Sip class. Hosted by Yosemite Conservancy & Yosemite Hospitality.



Learn new techniques in a photography class with The Ansel Adams Gallery. Photo by Evan Russel.



Become a Yosemite Junior Ranger! Pick up a free booklet at the welcome center in Yosemite Valley to get started.

## Program Schedule

Visit [go.nps.gov/YosemiteCalendar](http://go.nps.gov/YosemiteCalendar) or the NPS app to view the online calendar. Program offerings are subject to change, depending on conditions and staff availability.

### YOSEMITE VALLEY: PROGRAMS FOR KIDS & THEIR FAMILIES

DAY & TIME	PROGRAM	HOST	FEE?	REGISTER?
10 am – 2 pm M – F*	<b>Kids' Open Art Studio</b> Free self-guided kid's art activities at the Happy Isles Art and Nature Center (shuttle stop 16.) Drop in anytime during open studio hours; no registration required. *Classes begin Apr 14	YC	free	no; drop-in only
10 am (15 min) M – F*	<b>Kids' Science Talk</b> Meet at the Happy Isles Art and Nature Center (shuttle stop 16) for a family-friendly talk about a Yosemite-related topic with one of our naturalists. *Apr 14 – Apr 25 ONLY	YC	free	no; drop-in only
2 pm (15 min) daily*	<b>Family Ranger Talk</b> Topics vary. Meet in front of the Yosemite Valley Welcome Center (shuttle stops 1/2/4.) *Subject to change, based on staffing.	NPS	free	no; drop-in only

### YOSEMITE VALLEY: WALKS, TALKS, & TOURS

DAY & TIME	PROGRAM	HOST	FEE?	REGISTER?
8:30 am (2 hrs) M & W*	<b>Birding in Yosemite Valley</b> Listen, watch, and learn about Yosemite's birdlife while enjoying an easy-paced walk from Yosemite Village. Register in advance at <a href="http://yosemite.org/experience/naturalist-walks">yosemite.org/experience/naturalist-walks</a> . *Begins Mar 24; no program on Apr 30.	YC	\$	yes; register at Yosemite.org
9 am – 11 am Su*	<b>Climber Coffee</b> Meet with NPS climbing rangers to discuss climbing management issues, preventative search and rescue activities, and other current events surrounding the climbing community. Meet at Camp 4, near the registration booth. *Begins May 4.	NPS	free	no; drop-in only
11 am – 12 pm M – F*	<b>Ask a Naturalist</b> Join us at the Happy Isles Art and Nature Center (shuttle stop 16) for a drop-in Q&A with a seasoned naturalist. Ask about Yosemite's trees, wildlife, and more to gain insights into the park's wonders. *Apr 14 – Apr 25 ONLY.	YC	free	no; drop-in only
12:30 pm – 4:30 pm daily*	<b>Ask-a-Climber</b> View climbers on El Capitan through spotting scopes and discover the world of vertical adventure on Yosemite's big walls. West side of El Capitan bridge, near shuttle stop 9. Stop by anytime between 12:30 and 4:30 pm. *Begins May 2.	NPS	free	no; drop-in only
1 pm (1.5 hrs) M & W*	<b>Birding and Wildlife Walk</b> Look for birds, wildlife, and their signs while exploring Yosemite's diverse species and habitats. Families welcome! Register in advance at <a href="http://yosemite.org/experience/naturalist-walks">yosemite.org/experience/naturalist-walks</a> . *Begins Mar 24; no program Apr 30.	YC	\$	yes; register at Yosemite.org
2 pm (1 hr) daily	<b>Historic Ahwahnee Hotel Tour</b> Learn about the history behind Yosemite's famous luxury hotel on this complimentary one-hour tour. Meet on the hotel's back lawn.	YH	free	no; drop-in only
3 pm (1 hr) daily	<b>Guided Nature Walk</b> Learn about Yosemite's natural history and ecosystems with a Yosemite Naturalist. Meet at the Yosemite Valley Lodge Amphitheater.	YH	free	no; drop-in only

### YOSEMITE VALLEY: EVENING PROGRAMS

DAY & TIME	PROGRAM	HOST	FEE?	REGISTER?
5:30 pm* (1.5 hrs) Th, F, Sa	<b>Yosemite Valley Sunset Walk</b> Experience the magic of Yosemite at sunset as naturalists share the park's natural and cultural history on a scenic walk. Register at <a href="http://yosemite.org/experience/naturalist-walks">yosemite.org/experience/naturalist-walks</a> . *Starting Apr 10, programs begin at 6 pm. Dates offered may vary; check Yosemite.org for updates.	YC	\$	yes; register at Yosemite.org
7 pm (30 min) M, W, F, Sa*	<b>Evening Programs</b> Yosemite naturalists present a variety of topics. Meet at the Yosemite Valley Lodge Cliff Room (between the lounge and gift shop.) *Until Apr 1 ONLY	YH	free	no; drop-in only
8:30 pm (1.5 hrs) nightly	<b>Yosemite After Dark</b> Grab a flashlight and join a Yosemite Naturalist for a nature walk at night!	YH	\$	yes; tickets at TravelYosemite.com
9 pm (1 hr) Su, M, Tu	<b>Walking Starry Skies</b> Join a Yosemite Hospitality Guide for an unforgettable night of stargazing!	YH	\$	yes; tickets at TravelYosemite.com
9 pm (1.5 hrs) Th, F, Sa*	<b>Explore Yosemite's Night Sky</b> Join a naturalist for stargazing as they highlight stars and constellations with a laser pointer and share insights on astronomy and night sky lore. Register in advance at <a href="http://yosemite.org/experience/naturalist-walks">yosemite.org/experience/naturalist-walks</a> . *Dates offered may vary; check Yosemite.org for updates.	YC	\$	yes; register at Yosemite.org

Programs designed especially for children and their families.

Programs accessible to visitors with wheelchairs.

NPS (National Park Service)  
YC (Yosemite Conservancy)

YH (Yosemite Hospitality)  
TAAG (The Ansel Adams Gallery)

### ART CLASSES WITH YOSEMITE CONSERVANCY

Connect with your park through art! Join us for a class or creative activity that will help you see the natural world in a new way. Multi-day art retreats are also available! Visit [Yosemite.org/art](http://Yosemite.org/art) to browse the full calendar of classes.

DAY & TIME	PROGRAM	FEE?
9 am (4 hrs) M – F*	<b>Art Class</b> Meet at the Happy Isles Art and Nature Center for art classes. Browse the online calendar for schedule of guest instructors & class topics. Register in advance at <a href="http://yosemite.org/art">yosemite.org/art</a> . *Classes begin Apr 14	\$
2 pm (2 hrs) F*	<b>Paint and Sip</b> Learn the basics of watercolor and create an iconic Yosemite landscape step-by-step. Painting supplies (plus wine and cheese) are included. Hosted in partnership with Yosemite Hospitality at the Mountain Room Lounge. Register in advance at <a href="http://Yosemite.org/art">Yosemite.org/art</a> . *Classes begin May 2	\$

### PHOTOGRAPHY CLASSES WITH THE ANSEL ADAMS GALLERY

Classes will teach you how to use your camera as well as incorporating Ansel Adams' photographic techniques. Registration is required. Private photography guiding is also available. Visit [AnselAdams.com/photography-education](http://AnselAdams.com/photography-education) or call 209/372-4413.

DAY & TIME	PROGRAM	FEE?
9 am (1.5 hrs) Tu & Th	<b>The Ansel Adams Gallery Photography Walk</b> Join a staff photographer for a brief field lecture in Yosemite Valley. Limited space; registration required.	free
9 am (3 hrs) W	<b>In the Field: Creative Smartphone Photography</b> Join a staff photographer to learn how to make better photographs with the camera you always carry.	\$
1 pm (3 hrs) Sa	<b>In the Field: Creative Smartphone Photography</b> Join a staff photographer to learn how to make better photographs with the camera you always carry.	\$
1 pm (4 hrs) M & Th	<b>In the Footsteps of Ansel Adams</b> Join a staff photographer for a field class around Yosemite Valley.	\$
1 pm (4 hrs) Tu	<b>Ansel Adams's Legacy and Your Digital Camera</b> Join a staff photographer for a field class to learn how to make better photographs with your DSLR camera.	\$

### SPECIAL PROGRAMS & EVENTS

DAY & TIME	PROGRAM	HOST	FEE?	REGISTER?
Apr 18 7 pm (1.5 hrs)	<b>Unveiling our Weather-related Mysteries from Yosemite and Beyond</b> Join William Selby, retired earth sciences professor at Santa Monica College and author of <i>The California Sky Watcher</i> , for an engaging evening on weather. Curry Village Amphitheater (shuttle stops 14 & 19.)	YC	free	no; drop-in only
Apr 19 11 am (2 hrs)	<b>Weather Walk</b> Join William Selby on a guided walk exploring Yosemite's natural history, with a focus on weather and climate. Meet at the Curry Village Amphitheater (shuttle stops 14 & 19.)	YC	free	no; drop-in only
Apr 19 7 pm (1.5 hrs)	<b>Clearing Up Climate Change</b> Engage in a climate conversation with William Selby, as he unpacks Yosemite's ever-changing climate. Meet at the Curry Village Amphitheater (shuttle stops 14 & 19.)	YC	free	no; drop-in only
Apr 19 1 pm – 3 pm	<b>The Ansel Adams Gallery: Artists' Reception for Bob Kolbrenner</b> Closing reception at the Gallery for <i>Sky Country: Photographs by Bob Kolbrenner</i> . The exhibition runs March 1 through April 19.	TAAG	free	no; drop-in only
Apr 26 1 pm – 3 pm	<b>The Ansel Adams Gallery: Artists' Reception for Dan Burkholder</b> Reception at the Gallery for <i>Near and Far: A Visual Journey with Dan Burkholder</i> . The exhibition runs April 20 through May 31.	TAAG	free	no; drop-in only

## 👤 Become a Yosemite Junior Ranger!



Pick up a free *Junior Ranger Handbook* at the welcome center in Yosemite Valley. Complete the activities while you explore the park, then return your book to receive a badge!



## Park Partners



Providing For Yosemite's Future

Yosemite Conservancy is a nonprofit dedicated to preserving Yosemite National Park's resources and providing enriching visitor experiences in the park.

Contact [Yosemite.org](http://Yosemite.org)

- Locations** Turn to page 4 for hours
- Yosemite Exploration Center & Theater (Yosemite Village)
  - Happy Isles Art & Nature Center (closed in winter)
  - Retail locations throughout the park (some seasonal)

**Outdoor Adventures**  
Check the calendar for guided hikes and backpacking trips in Yosemite: [Yosemite.org/experience/outdoor-adventures](http://Yosemite.org/experience/outdoor-adventures)

- Upcoming Outdoor Adventures:
- Mar 23 | Day Hike: Wildflowers on the Merced
  - Mar 27 | Yosemite Field School: Birds, Blooms, Butterflies, Newts & more
  - Apr 26 & 27 | Day Hikes: Intro to Birding

**Custom Adventures**  
Private guided excursions, available year-round: [Yosemite.org/custom-adventures](http://Yosemite.org/custom-adventures)

**Art Classes**  
Join us for weekday workshops, kids' classes, overnight art retreats, and more. Check the online calendar for upcoming classes at [Yosemite.org/art](http://Yosemite.org/art)

- Upcoming Art Classes:
- Apr 14 – 18 & 21 – 25 | Fieldsketching with Fran Calvert
  - Apr 28 – May 2 | Watercolor with Jim Kingwell
  - May 5 – 9 | Watercolor with Jo-Neal Graves



Yosemite Hospitality operates lodging, dining, shopping, and other services throughout the park. A variety of tours, naturalist programs, guided hikes, and

recreation rentals may be available. Book online, over the phone, or in person at the Yosemite Valley Lodge front desk.

Contact [TravelYosemite.com](http://TravelYosemite.com) or 888/413-8869

- Locations** Turn to page 4 for hours
- Tour desks and bike rentals at Yosemite Village, Curry Village, & Yosemite Valley Lodge (spring through fall, as conditions allow)
  - Yosemite Mountaineering School at Curry Village: guided hikes & rock climbing (closed in winter)
  - Badger Pass Ski Area (winter only)



Contact [AnselAdams.com/photography-education](http://AnselAdams.com/photography-education) or 209/372-4413

**Location** The Ansel Adams Gallery is located in Yosemite Village (hours on page 4.) Experience a variety of fine arts, handcrafts, and a collection of Ansel Adams' original photographs. The gallery also offers half-day or full-day photography classes and private guided tours led by a resident staff photographer.

- Current & Upcoming Exhibitions:
- Mar 2 – Apr 19 | *Sky Country: Photographs by Bob Kolbrenner*
  - Apr 20 – May 31 | *Near and Far: A Visual Journey with Dan Burkholder*



Contact [SierraClub.org/yosemite-conservation-heritage-center](http://SierraClub.org/yosemite-conservation-heritage-center) or 209/372-4542

**Location** The Yosemite Conservation Heritage Center is closed for the season. We look forward to welcoming you back in late May!



Bring your school to NatureBridge for multi-day, immersive environmental science programs that ignite curiosity and foster deep connections with nature. As the largest education partner of the National Park Service since 1971, NatureBridge provides transformative, hands-on learning experiences in the country's most iconic national parks. Our nonprofit organization is dedicated to inspiring the next generation of environmental stewards. Discover more and plan your school's adventure at [naturebridge.org](http://naturebridge.org).



# Yosemite Valley Trails

## Know Before You Go

### Weather and trail conditions can vary widely in spring.

Expect to find snow and ice at higher elevations, especially in early spring, and muddy trails or flooding on the Valley floor. Winter closures may still be in effect; ask a ranger or check [go.nps.gov/conditions](http://go.nps.gov/conditions) for trail closure updates. Be extra prepared: check the weather forecast and wear warm and waterproof layers. Use extreme caution around any moving water.

**Pets are NOT allowed on hiking trails.** Pets are only permitted on paved biking and walking paths, in most campgrounds, and in parking areas. Pets must be leashed. Service dogs are permitted anywhere that visitors can go.

**Proper food storage is required by law.** Bears can easily break into vehicles to obtain food. During the day, food must be hidden from sight inside a locked vehicle with all windows and vents completely shut. At night, food, trash, and other scented items must be removed from vehicles and stored in a bear-resistant locker.

**View wildlife from a distance.** It is dangerous and illegal to approach or feed wildlife. Keep food within arm's reach.

**Stay on the trail.** Protect fragile vegetation and avoid getting lost by staying on designated trails. Stay behind barriers, and do not enter water above waterfalls.

**Pack it out.** Most trails do not have restrooms or trash cans. Human waste must be deposited at least 200 feet from trails and water. Solid waste must be buried six inches deep. Pack out all trash, including toilet paper.

**Leave behind what you find.** It is illegal to remove natural objects or artifacts from the park.

**IN AN EMERGENCY, CALL OR TEXT 911.**

## Trails Outside of Yosemite Valley

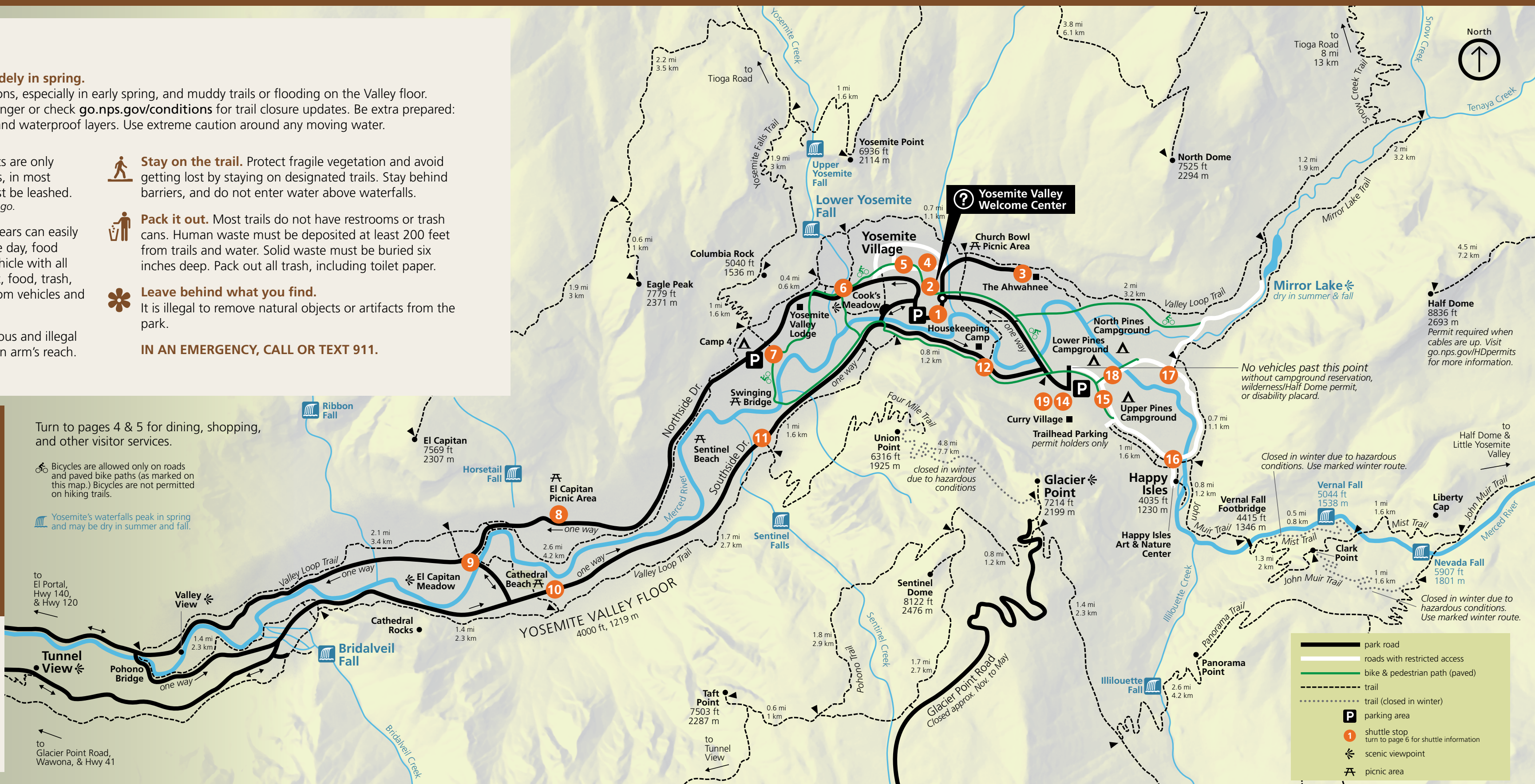
Stop by an open information center to pick up free trail maps and ask a ranger for recommendations. Turn to page 3 for hours and locations.



## Hiking Half Dome

Half Dome Cables are down for the season.

Permits are required 7 days a week when the cables are up, from late May to mid-October, conditions permitting. Permits are available by pre-season (March 1–31) and daily lotteries. More information is available at [go.nps.gov/HDpermits](http://go.nps.gov/HDpermits)



Turn to pages 4 & 5 for dining, shopping, and other visitor services.

Bicycles are allowed only on roads and paved bike paths (as marked on this map.) Bicycles are not permitted on hiking trails.

Yosemite's waterfalls peak in spring and may be dry in summer and fall.

to El Portal, Hwy 140, & Hwy 120

to Glacier Point Road, Wawona, & Hwy 41

## Backpacking Yosemite

A wilderness permit is required for all overnight trips into Yosemite's Wilderness. Visit [go.nps.gov/WildPermits](http://go.nps.gov/WildPermits) for information.

Wilderness centers open in spring. If a permit reservation is required but the appropriate wilderness center is not open, find instructions for permit pickup at [go.nps.gov/wildconditions](http://go.nps.gov/wildconditions).

Come prepared with your own approved bear canister—or rent one at the welcome center in Yosemite Valley (open 9 am to 5 pm daily.)

### Wilderness Permit Locations

- Yosemite Valley:** Wilderness center expected to open Apr 25 (8 am to 5 pm), if staffing allows. Permit reservation required starting Apr 25. Before Apr 25, self-register for Valley trailheads in front of the welcome center.
- Wawona Visitor Center:** Self-register for permits on the front porch. Wawona trailheads ONLY.
- Big Oak Flat Information Station:** Self-register for permits on the front porch. BOF trailheads ONLY.
- Hetch Hetchy Entrance Station:** Before Apr 25, self-register for permits at the entrance station. HH trailheads ONLY. Permit reservation required starting Apr 25.
- Big Wall Climbing Permits:** Self-registration permits for overnight climbs are available at El Capitan Crossover (shuttle stop 9.)

TRAIL	LENGTH & ELEVATION GAIN	STARTING POINT
<b>Shorter Walks</b> <i>scenic walks that usually take an hour or less</i>	distances are round-trip	
<b>BRIDALVEIL FALL</b> Take a short stroll to the base of Bridalveil Fall. A gentle incline leads to a wheelchair-accessible viewing area, while a steeper path climbs closer to the base of the fall. <i>Stay behind barriers. Rocks at the base of the waterfall are very slick and dangerous.</i>	0.5 mi/0.8 km; paved with gentle incline	Bridalveil Fall parking area or Southside Drive
<b>LOWER YOSEMITE FALL</b> A short but rewarding trail to the base of Yosemite Falls. The east side of the loop is wheelchair-accessible. Expect heavy spray in spring. <i>Stay behind barriers. Rocks at the base of the waterfall are very slick and dangerous.</i>	1 mi/1.6 km; paved with gentle incline	Shuttle Stop 6
<b>COOK'S MEADOW LOOP</b> Take a relaxed stroll and enjoy views of Yosemite Falls, Half Dome, and the Merced River. Look and listen for birds and other wildlife in early morning and around dusk.	1 mi/1.6 km; flat pavement & boardwalk	Shuttle Stop 6
<b>MIRROR LAKE</b> (dry in summer & fall) Take a short walk on a paved road to the front of the lake, at the base of Half Dome. Continue on the unpaved hiking trail for a 4.5-mile loop. Pets are allowed only on the paved road. Vehicles with a valid disability placard may drive the paved road to the front of Mirror Lake.	2 mi/3.2 km; 100 ft/30 m elev. gain	Shuttle Stop 17

wheelchair-accessible paved path or boardwalk  
*Paths may be snowy or icy in winter.*

leashed pets welcome

TRAIL	LENGTH & ELEVATION GAIN	STARTING POINT
<b>Hiking to Vernal &amp; Nevada Falls</b> <i>Sections of the Mist Trail and John Muir Trail close in winter due to hazardous icy conditions.</i>	distances are round-trip	
<b>HAPPY ISLES TO VERNAL FALL FOOTBRIDGE</b> 1–1.5 hrs. Hike the short but very steep first section of the John Muir Trail for a view of Vernal Fall from the footbridge. Return the same way. <i>This section of trail is paved, but pets are NOT allowed.</i>	1.6 mi/2.6 km; 400 ft/120 m elev. gain	Happy Isles; Shuttle Stop 16
<b>HAPPY ISLES TO TOP OF VERNAL FALL</b> 2–3 hours. <i>The stair section of the Mist Trail usually opens in late March or April. If closed, use the winter route listed below.</i> Hike the John Muir Trail to the Vernal Fall Footbridge, then continue onto the Mist Trail. Climb a series of very steep steps to the top of Vernal Fall. This section has heavy spray and slippery steps; wear shoes with good traction and expect to be soaked. Return the same way, or via Clark Point and the John Muir Trail for a scenic loop with a less-steep, drier descent (recommended.)	2.4 mi/3.8 km; 1000 ft/300 m elev. gain	Happy Isles; Shuttle Stop 16
<b>WINTER ROUTE: HAPPY ISLES TO TOP OF VERNAL FALL</b> 3–4 hours. Hike the John Muir Trail to the Vernal Fall Footbridge, then follow the marked winter route up a series of switchbacks to Clark Point. Descend from Clark Point to the top of Vernal Fall. Return the same way.	4.8 mi/7.7 km round-trip; 1500 ft/450 m elev. gain	Happy Isles; Shuttle Stop 16
<b>WINTER ROUTE: HAPPY ISLES TO TOP OF NEVADA FALL</b> 5–6 hours. Hike the John Muir Trail to the Vernal Fall Footbridge, then follow the marked winter route up a series of switchbacks to Clark Point. Descend from Clark Point to the top of Nevada Fall. Continue up the Mist Trail to Nevada Fall. Return the same way.	6.6 mi/10.6 km round-trip; 2000 ft/600 m elev. gain	Happy Isles; Shuttle Stop 16

### Choose Your Own Adventure

**YOSEMITE VALLEY LOOP TRAIL** Enjoy a scenic loop around the Yosemite Valley floor on this quiet, less-traveled trail. Hike a short section, or spend a day exploring the entire trail. Use the map above for distances from point-to-point and to plan your hike. *Expect to find muddy or flooded sections in spring.*

### More Challenging Hikes

**YOSEMITE FALLS TRAIL** 6–8 hrs. A steep, rugged trail with dozens of switchbacks. Hike the first steep mile to Columbia Rock for stunning valley views. Continue to the top of Yosemite Falls; return the same way.

**FOUR MILE TRAIL TO GLACIER POINT** 6–8 hrs. *Upper section closed in winter. Entire trail may close, depending on conditions.* This challenging trail offers spectacular views of Yosemite Valley. Plan to hike back down from Glacier Point—there is no shuttle to return you to the Valley. Combine with the Panorama Trail for an even longer 12-mile semi-loop.