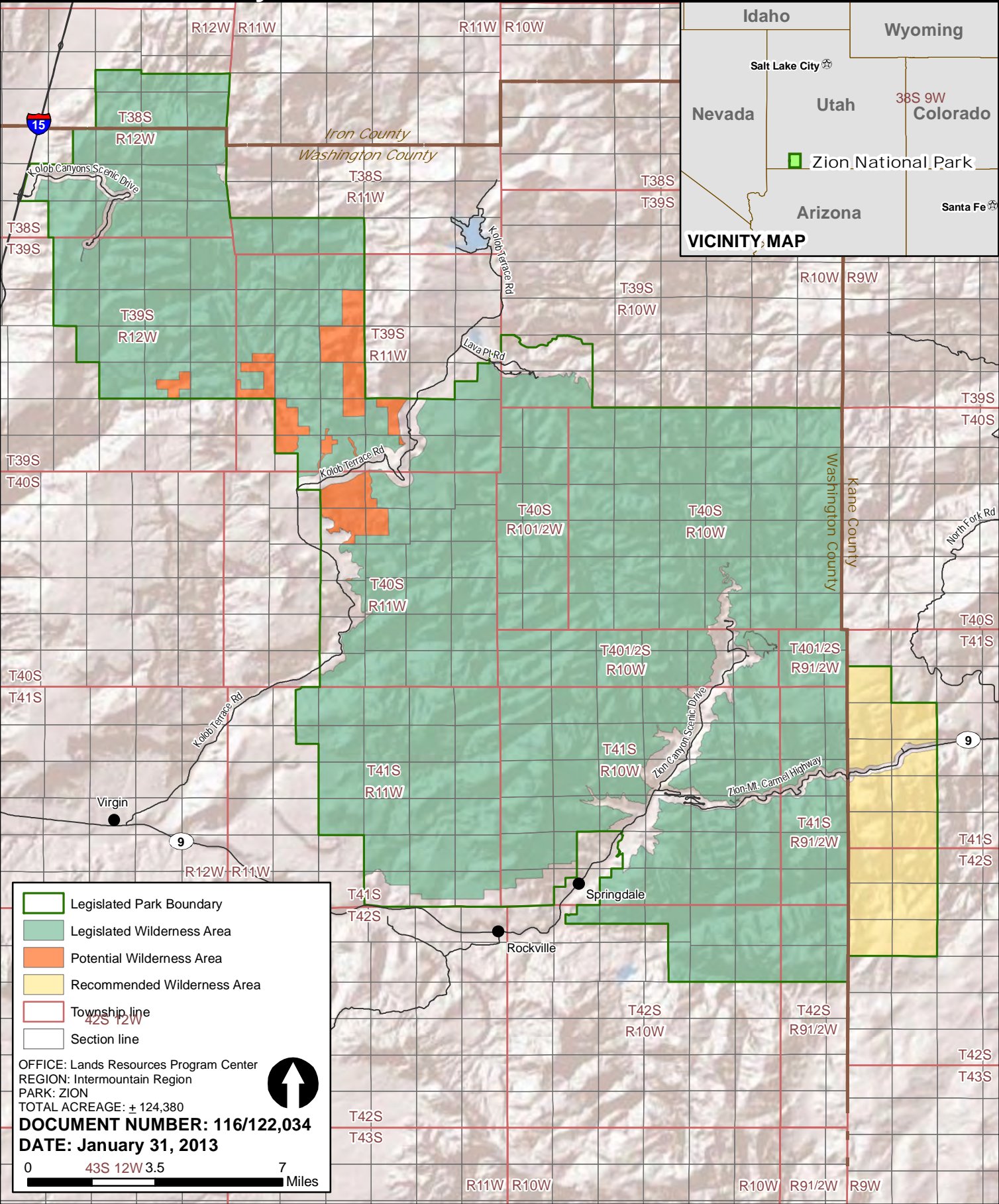


# Zion National Park Wilderness Boundary Exhibit: Map 1 of 14 Overall Boundary

National Park Service  
U.S. Department of the Interior



- Legislated Park Boundary
- Legislated Wilderness Area
- Potential Wilderness Area
- Recommended Wilderness Area
- Township line
- Section line

OFFICE: Lands Resources Program Center  
 REGION: Intermountain Region  
 PARK: ZION  
 TOTAL ACREAGE: ± 124,380

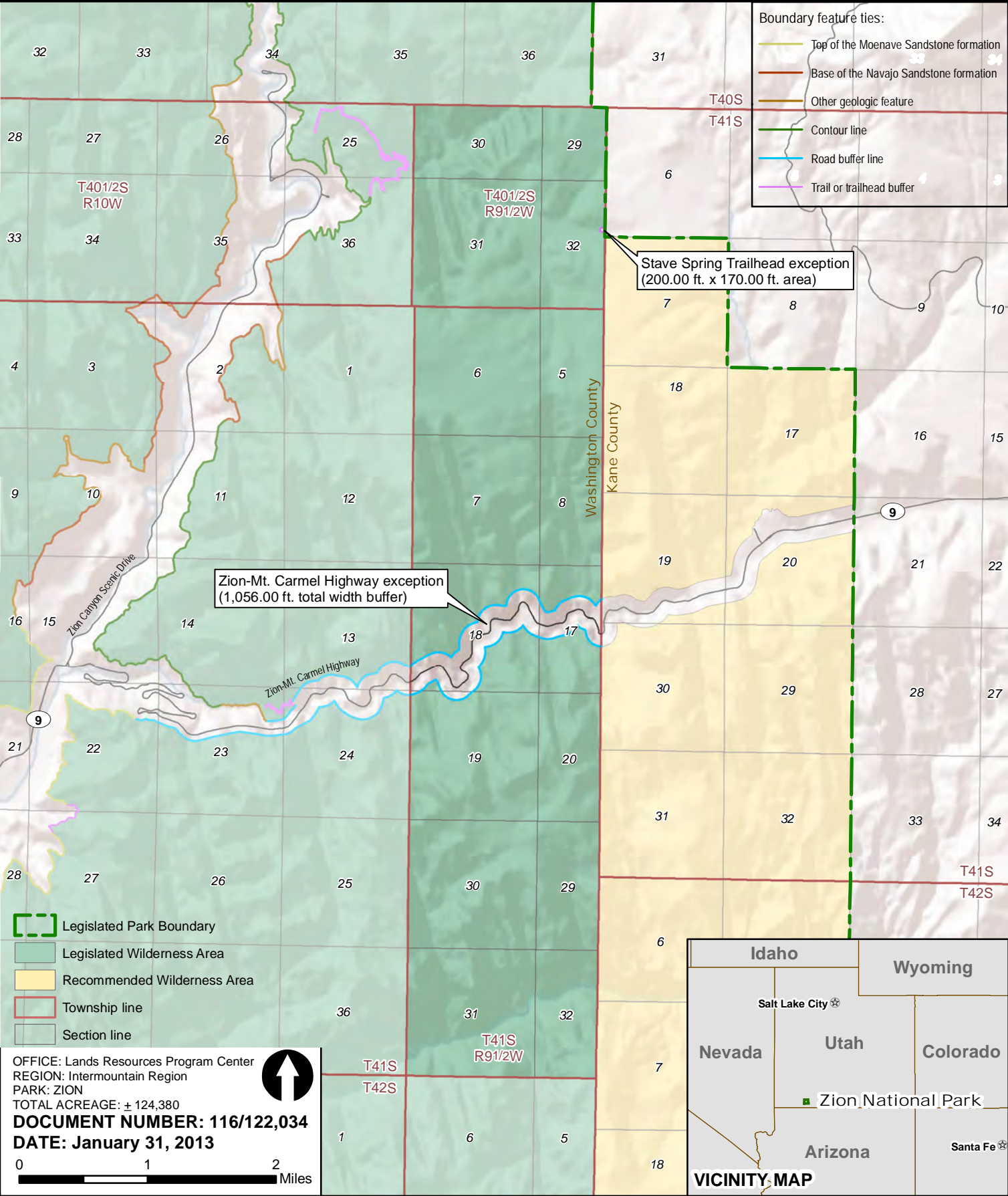
**DOCUMENT NUMBER: 116/122,034**  
**DATE: January 31, 2013**

# Zion National Park

## Wilderness Boundary Exhibit: Map 2 of 14

### Tps. 401/2 & 41 S., R. 91/2 W., Salt Lake Meridian

National Park Service  
U.S. Department of the Interior



OFFICE: Lands Resources Program Center  
 REGION: Intermountain Region  
 PARK: ZION  
 TOTAL ACREAGE: ± 124,380  
**DOCUMENT NUMBER: 116/122,034**  
**DATE: January 31, 2013**

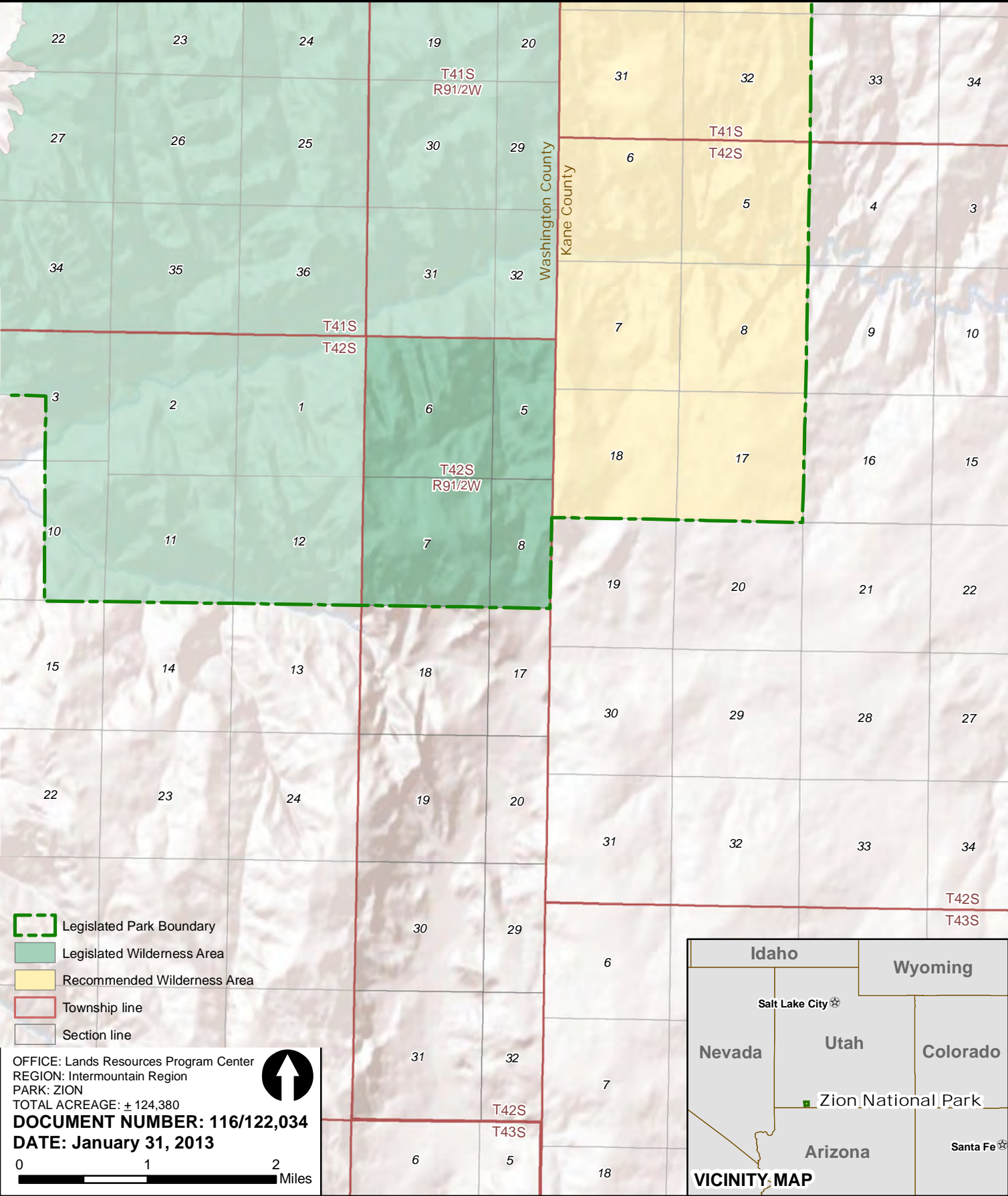
0 1 2 Miles

# Zion National Park

## Wilderness Boundary Exhibit: Map 3 of 14

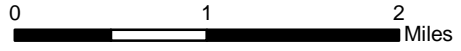
### T. 42 S., R. 91/2 W., Salt Lake Meridian

National Park Service  
U.S. Department of the Interior



- Legislated Park Boundary
- Legislated Wilderness Area
- Recommended Wilderness Area
- Township line
- Section line

OFFICE: Lands Resources Program Center  
 REGION: Intermountain Region  
 PARK: ZION  
 TOTAL ACREAGE: ± 124,380  
**DOCUMENT NUMBER: 116/122,034**  
**DATE: January 31, 2013**

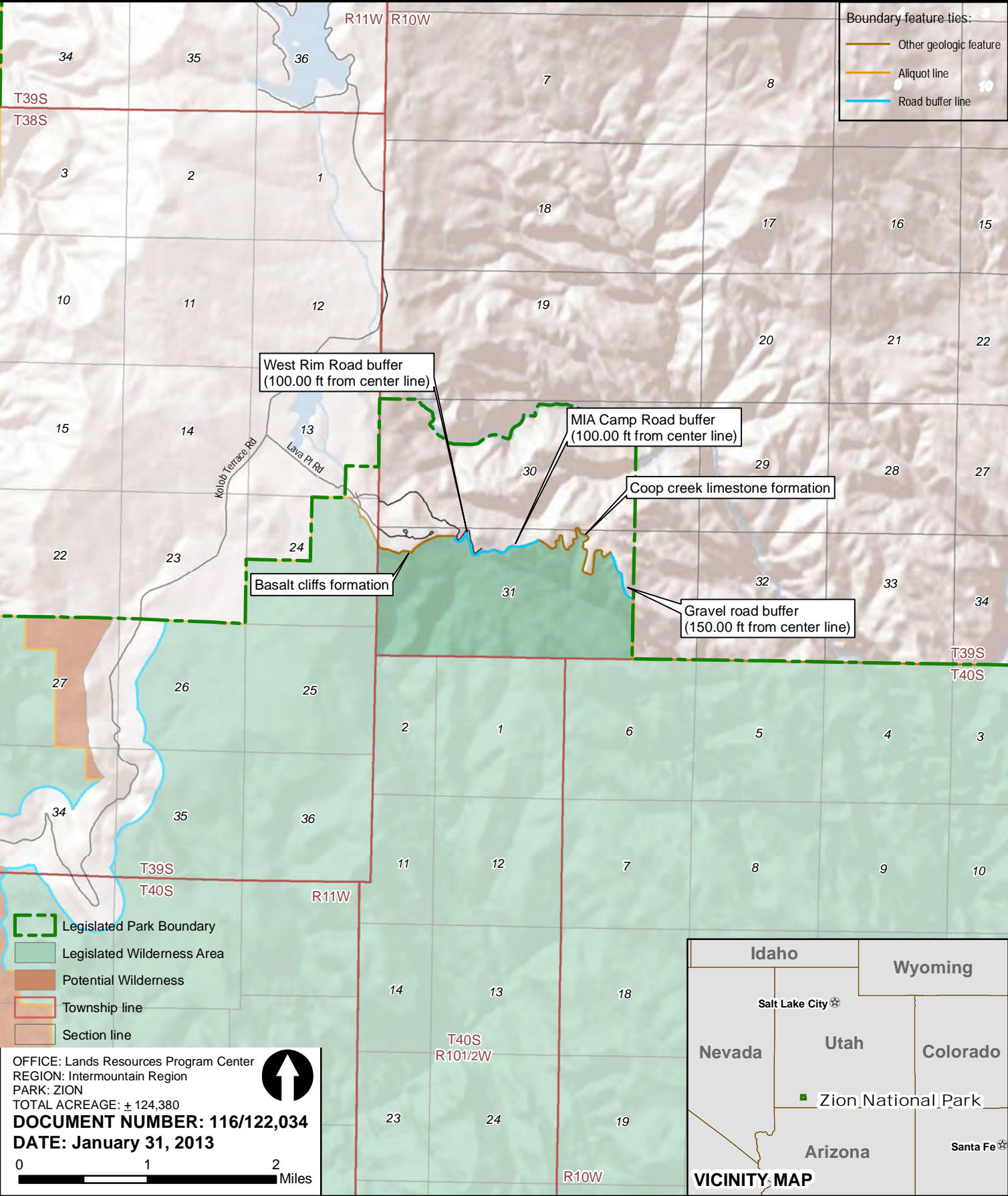


# Zion National Park

## Wilderness Boundary Exhibit: Map 4 of 14

### T. 39 S., R. 10 W., Salt Lake Meridian

National Park Service  
U.S. Department of the Interior



Boundary feature ties:

- Other geologic feature
- Aliquot line
- Road buffer line

- Legislated Park Boundary
- Legislated Wilderness Area
- Potential Wilderness
- Township line
- Section line

OFFICE: Lands Resources Program Center  
 REGION: Intermountain Region  
 PARK: ZION  
 TOTAL ACREAGE: ± 124,380  
**DOCUMENT NUMBER: 116/122,034**  
**DATE: January 31, 2013**

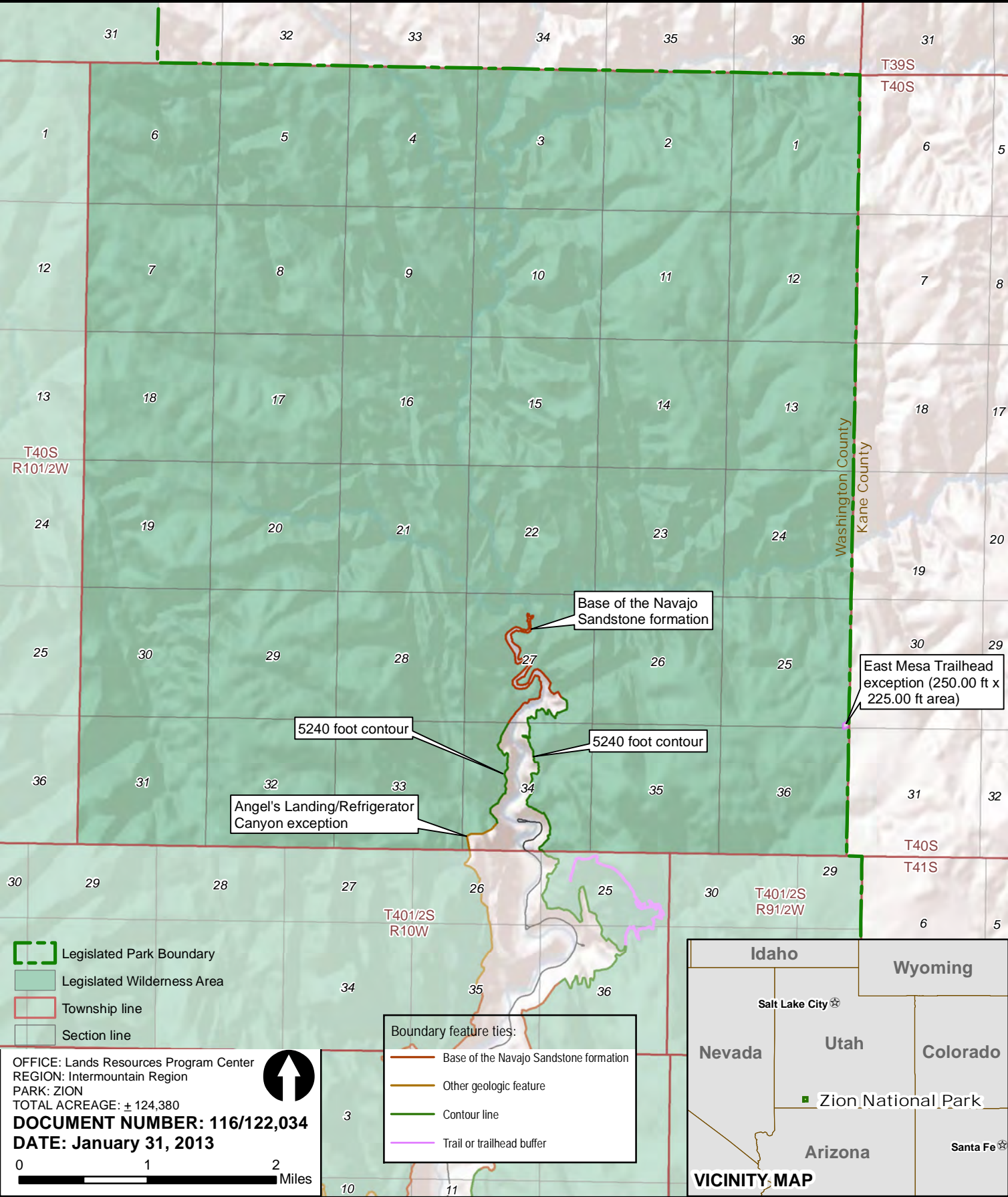
**VICINITY MAP**

# Zion National Park

## Wilderness Boundary Exhibit: Map 5 of 14

### T. 40 S., R. 10 W., Salt Lake Meridian

National Park Service  
U.S. Department of the Interior



- Legislated Park Boundary
- Legislated Wilderness Area
- Township line
- Section line

- Boundary feature ties:
- Base of the Navajo Sandstone formation
  - Other geologic feature
  - Contour line
  - Trail or trailhead buffer

OFFICE: Lands Resources Program Center  
 REGION: Intermountain Region  
 PARK: ZION  
 TOTAL ACREAGE: ± 124,380  
**DOCUMENT NUMBER: 116/122,034**  
**DATE: January 31, 2013**

0 1 2 Miles

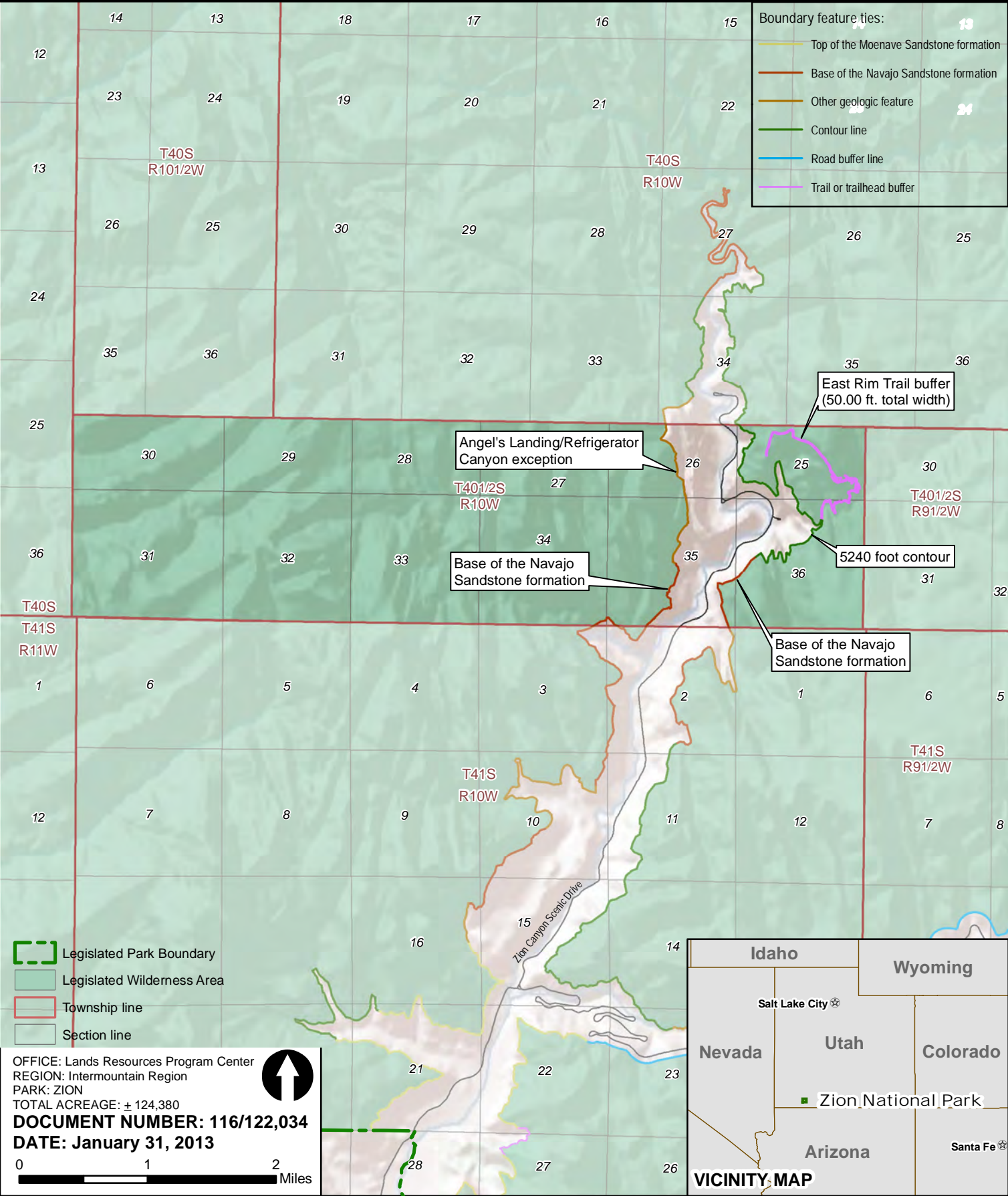


# Zion National Park

## Wilderness Boundary Exhibit: Map 6 of 14

### T. 40 1/2 S., R. 10 W., Salt Lake Meridian

National Park Service  
U.S. Department of the Interior


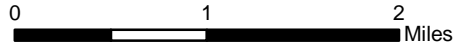


**Boundary feature ties:**

- Top of the Moenave Sandstone formation
- Base of the Navajo Sandstone formation
- Other geologic feature
- Contour line
- Road buffer line
- Trail or trailhead buffer

- Legislated Park Boundary
- Legislated Wilderness Area
- Township line
- Section line

OFFICE: Lands Resources Program Center  
 REGION: Intermountain Region  
 PARK: ZION  
 TOTAL ACREAGE: ± 124,380  
**DOCUMENT NUMBER: 116/122,034**  
**DATE: January 31, 2013**

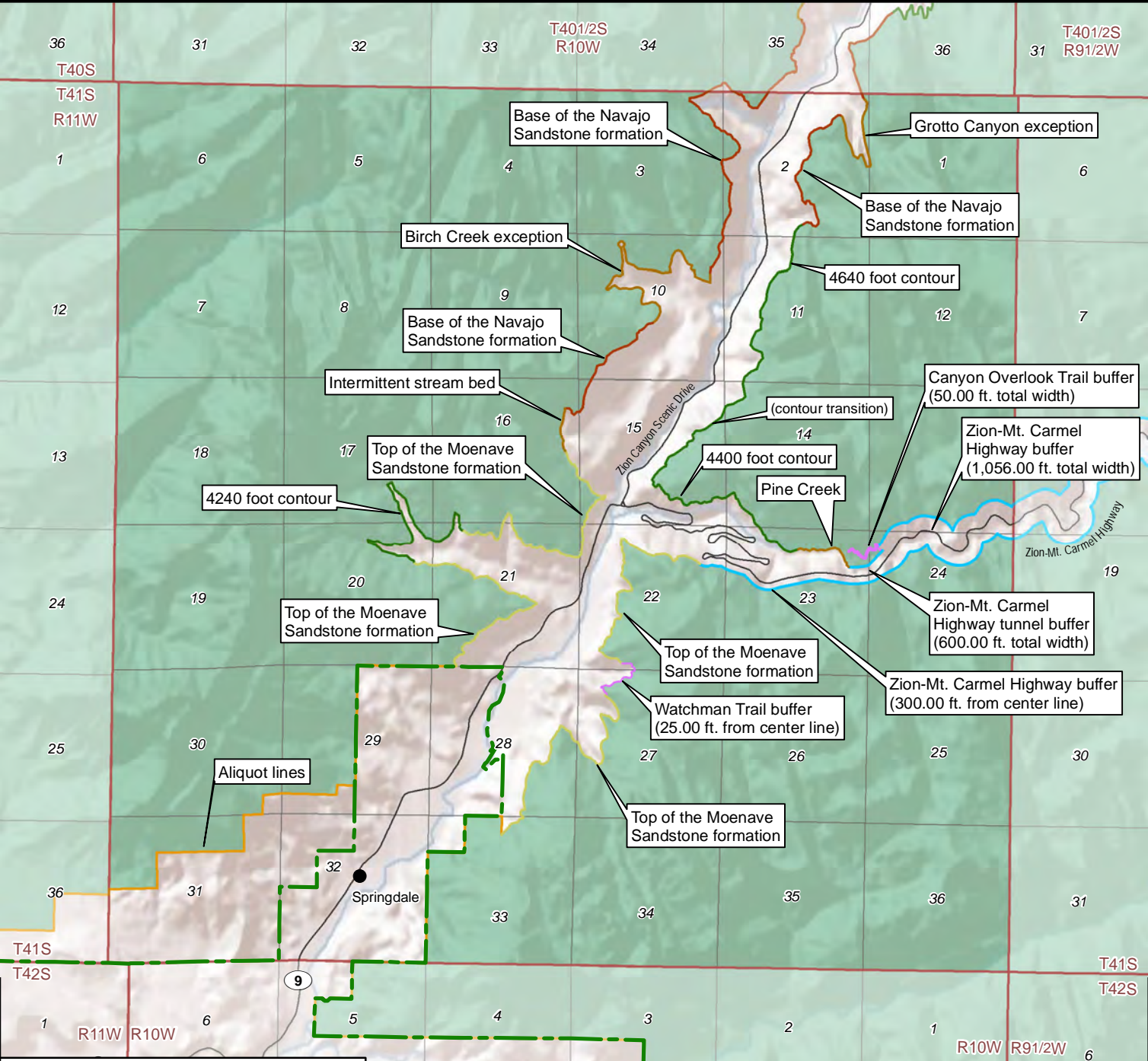
**VICINITY MAP**

# Zion National Park

## Wilderness Boundary Exhibit: Map 7 of 14

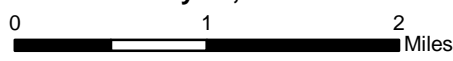
### T. 41 S., R. 10 W., Salt Lake Meridian

National Park Service  
U.S. Department of the Interior



- Legislated Park Boundary
- Legislated Wilderness Area
- Township line
- Section line

OFFICE: Lands Resources Program Center  
 REGION: Intermountain Region  
 PARK: ZION  
 TOTAL ACREAGE: ± 124,380  
**DOCUMENT NUMBER: 116/122,034**  
**DATE: January 31, 2013**

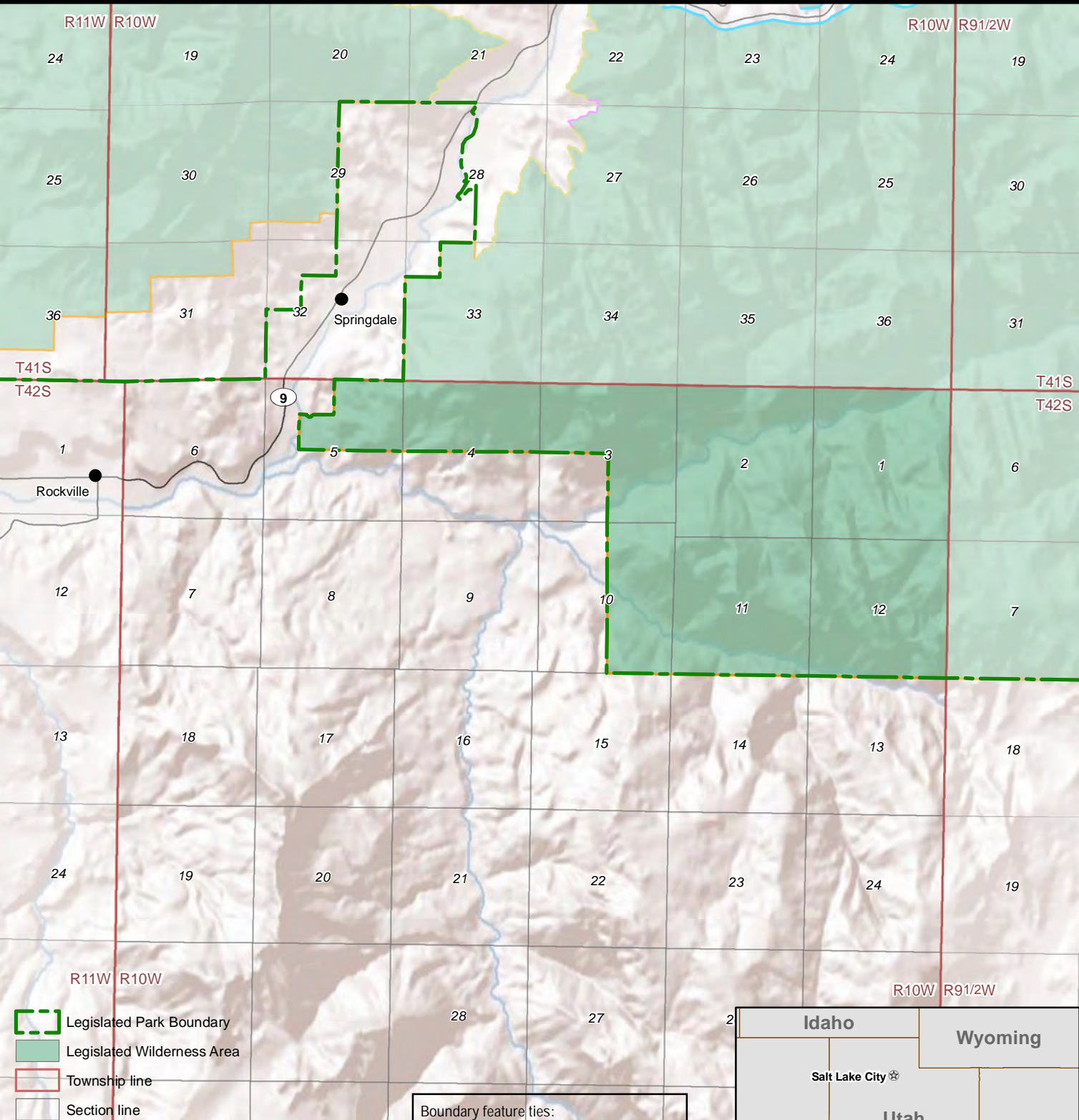


# Zion National Park

## Wilderness Boundary Exhibit: Map 8 of 14

### T. 42 S., R. 10 W., Salt Lake Meridian


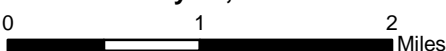
National Park Service  
U.S. Department of the Interior



- Legislated Park Boundary
- Legislated Wilderness Area
- Township line
- Section line

- Boundary feature ties:
- Top of the Moenave Sandstone formation
  - Base of the Navajo Sandstone formation
  - Aliquot line
  - Road buffer line
  - Trail or trailhead buffer

OFFICE: Lands Resources Program Center  
 REGION: Intermountain Region  
 PARK: ZION  
 TOTAL ACREAGE: ± 124,380  
**DOCUMENT NUMBER: 116/122,034**  
**DATE: January 31, 2013**

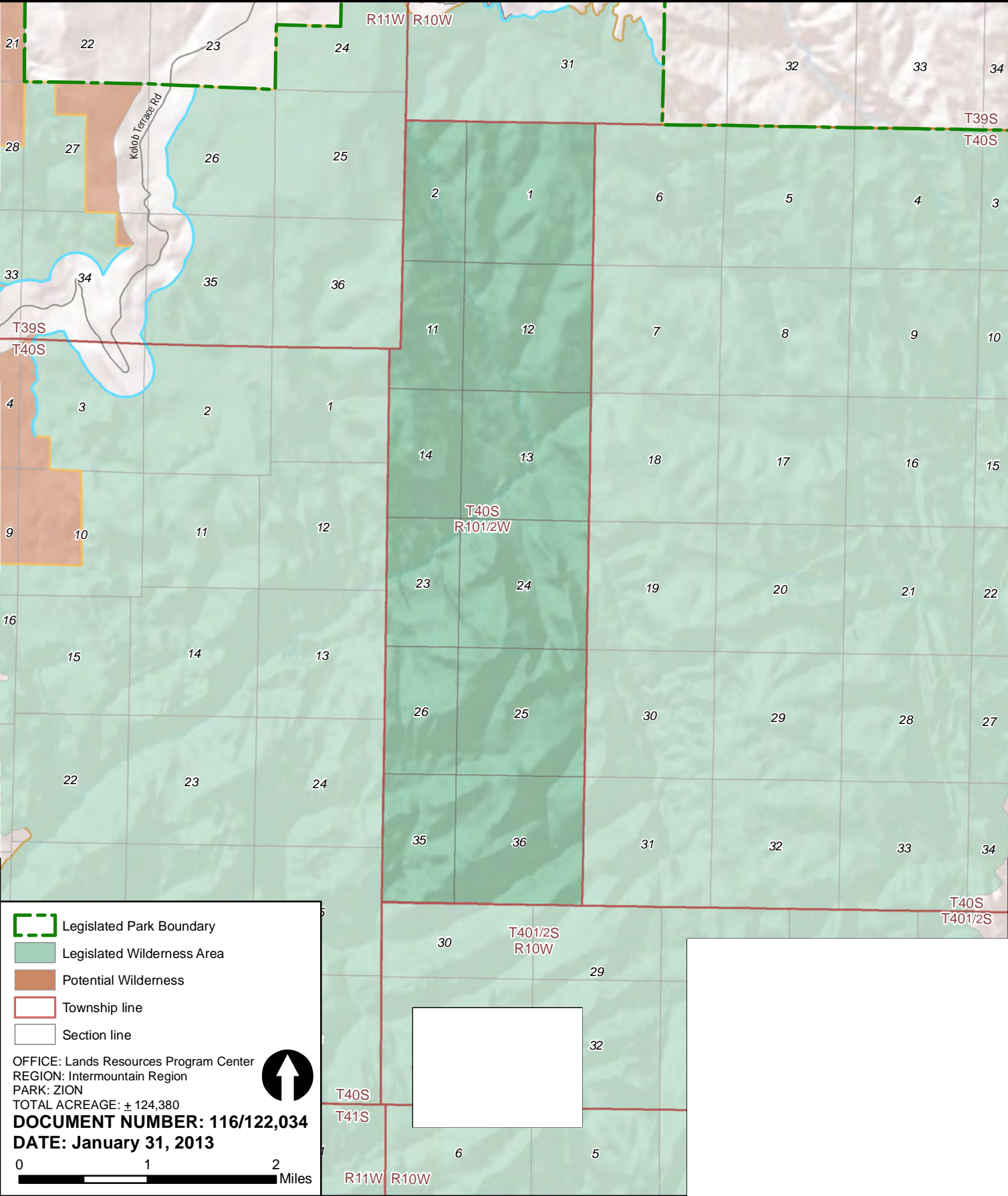



# Zion National Park

## Wilderness Boundary Exhibit: Map 9 of 14

### T. 40 S., R. 10 1/2 W., Salt Lake Meridian

National Park Service  
U.S. Department of the Interior

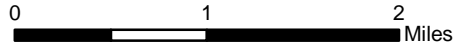


- Legislated Park Boundary
- Legislated Wilderness Area
- Potential Wilderness
- Township line
- Section line

OFFICE: Lands Resources Program Center  
REGION: Intermountain Region  
PARK: ZION



TOTAL ACREAGE: ± 124,380  
**DOCUMENT NUMBER: 116/122,034**  
**DATE: January 31, 2013**

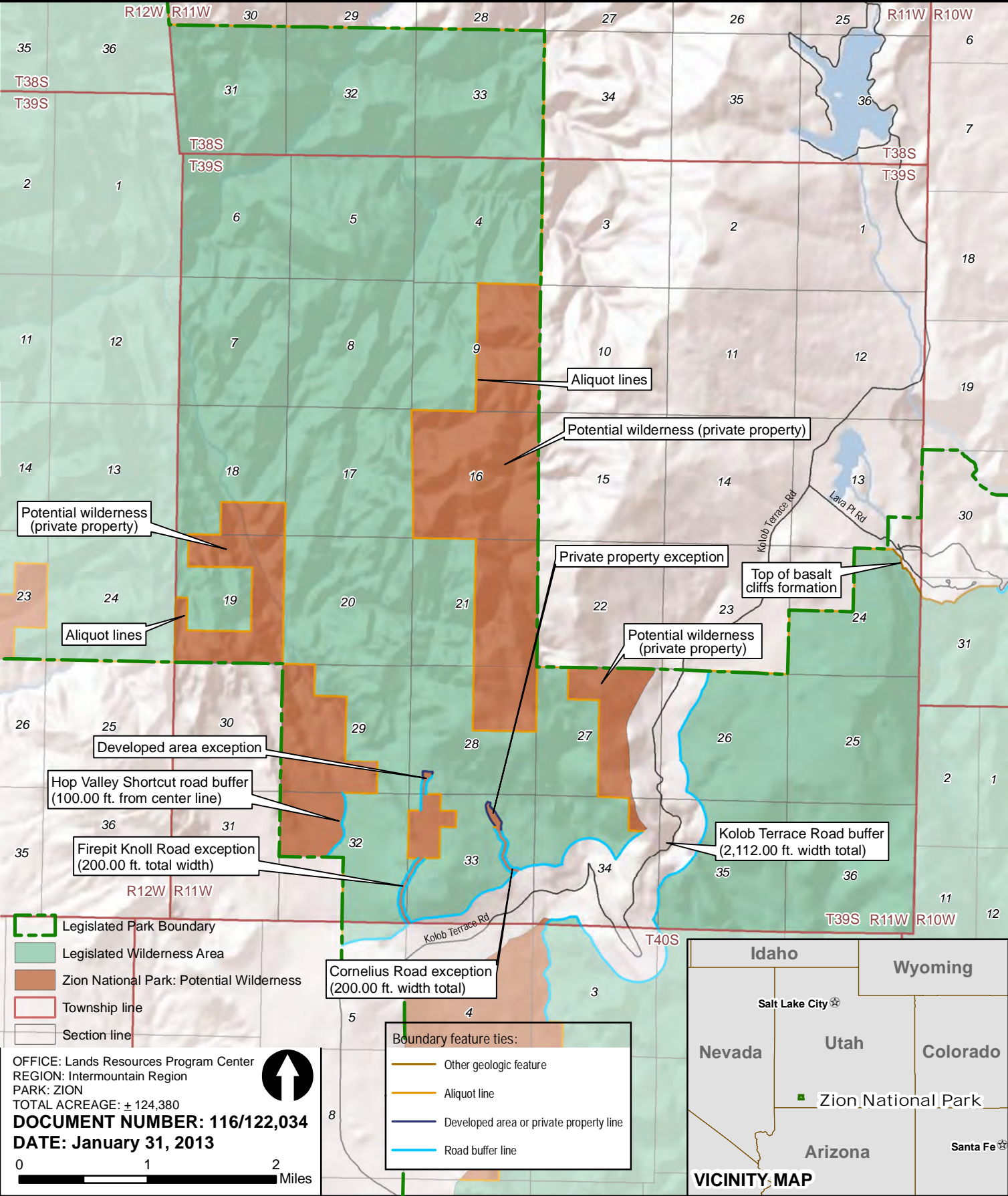


# Zion National Park

## Wilderness Boundary Exhibit: Map 10 of 14

### Tps. 38 & 39 S., R. 11 W., Salt Lake Meridian

National Park Service  
U.S. Department of the Interior



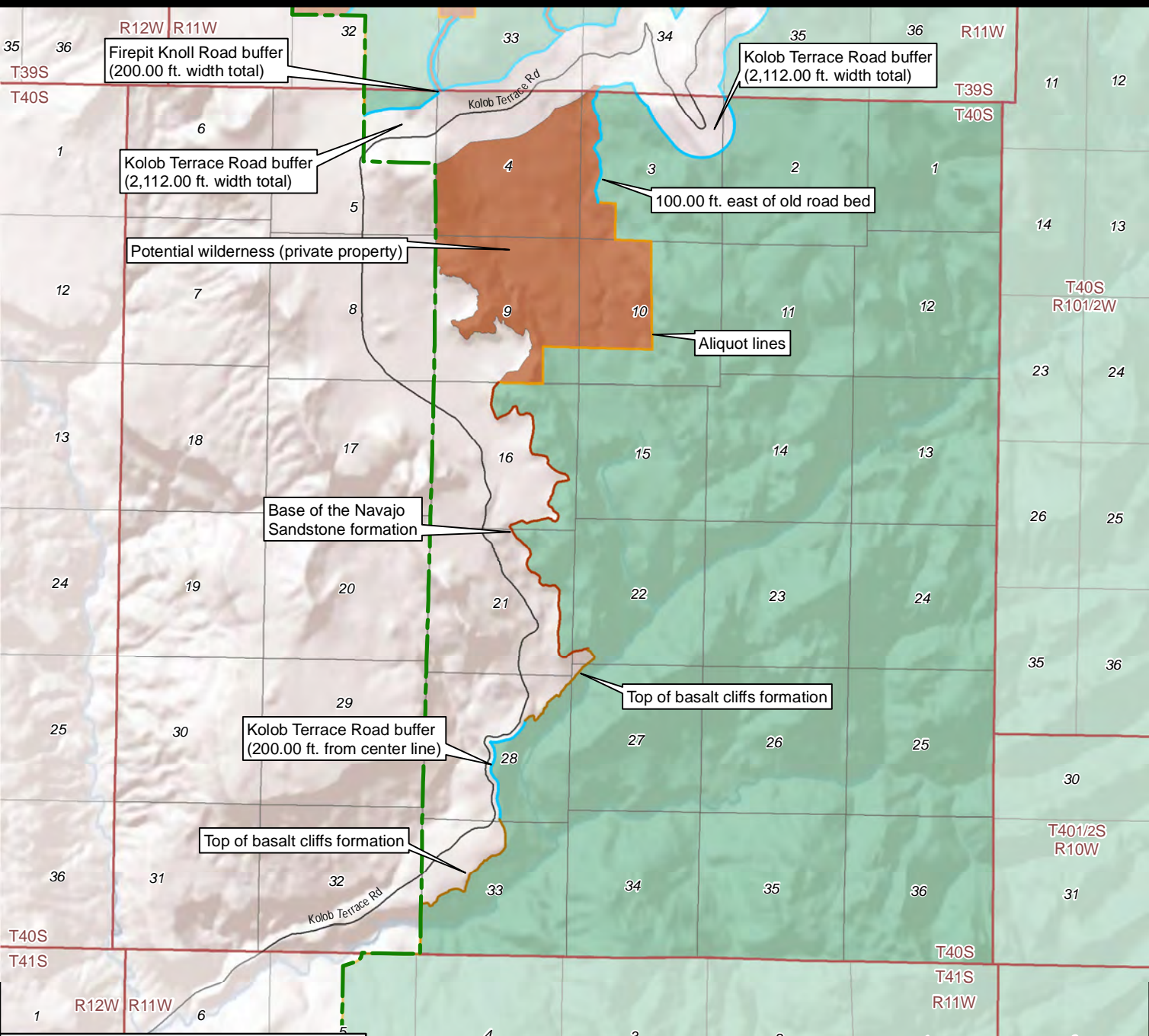
OFFICE: Lands Resources Program Center  
 REGION: Intermountain Region  
 PARK: ZION  
 TOTAL ACREAGE: ± 124,380  
**DOCUMENT NUMBER: 116/122,034**  
**DATE: January 31, 2013**

# Zion National Park

## Wilderness Boundary Exhibit: Map 11 of 14

### T. 40 S., R. 11 W., Salt Lake Meridian

National Park Service  
U.S. Department of the Interior



**Legend:**

- Legislated Park Boundary
- Legislated Wilderness Area
- Zion National Park: Potential Wilderness
- Township line
- Section line

OFFICE: Lands Resources Program Center  
 REGION: Intermountain Region  
 PARK: ZION  
 TOTAL ACREAGE: ± 124,380  
**DOCUMENT NUMBER: 116/122,034**  
**DATE: January 31, 2013**

0 1 2 Miles

**Boundary feature ties:**

- Base of the Navajo Sandstone formation
- Other geologic feature
- Aliquot line
- Road buffer line

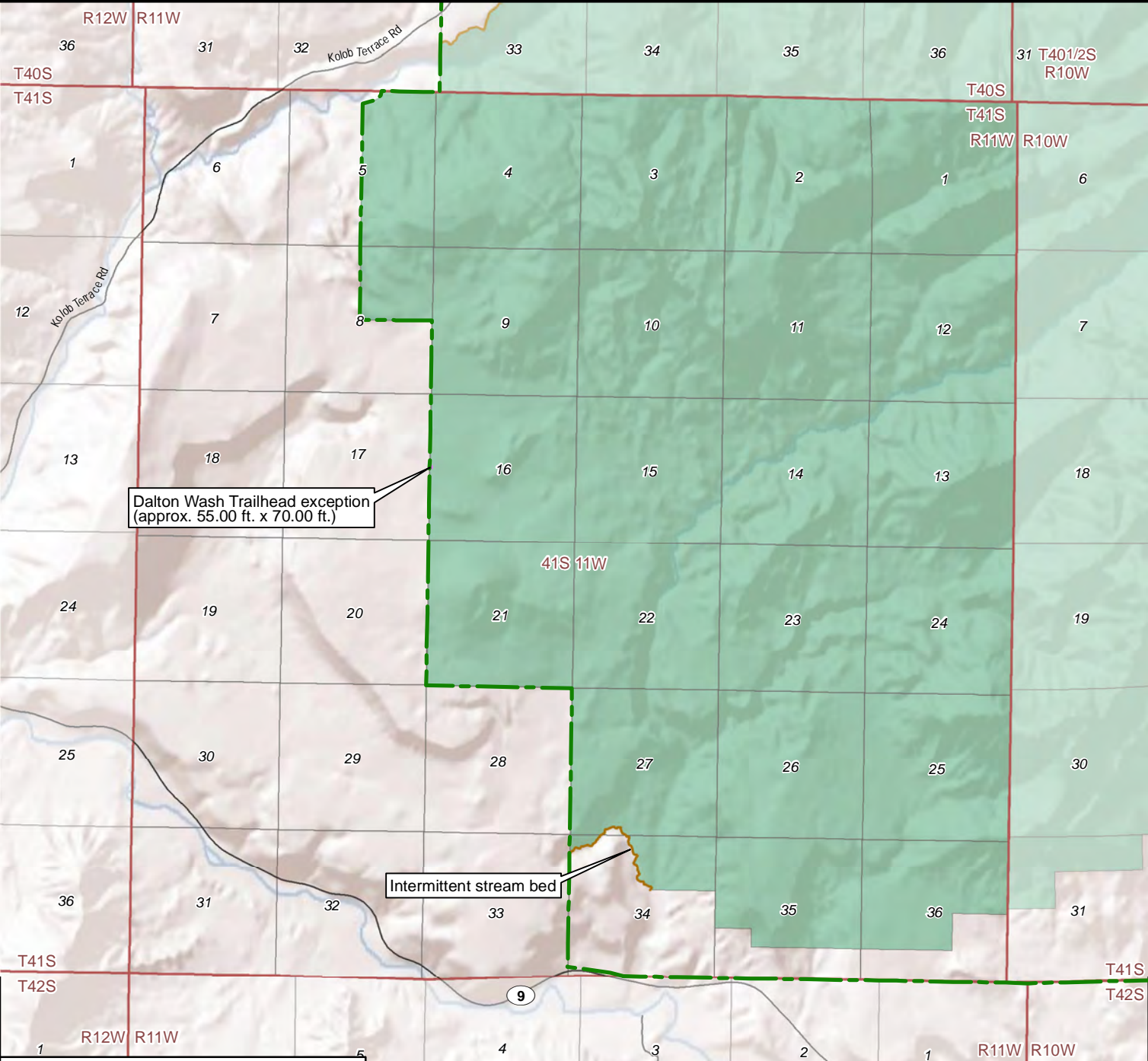


# Zion National Park

## Wilderness Boundary Exhibit: Map 12 of 14



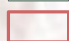
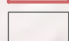
### T. 41 S., R. 11 W., Salt Lake Meridian

National Park Service  
U.S. Department of the Interior

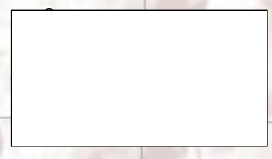
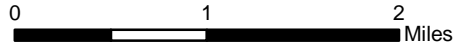


Dalton Wash Trailhead exception  
(approx. 55.00 ft. x 70.00 ft.)

Intermittent stream bed

-  Legislated Park Boundary
-  Legislated Wilderness Area
-  Township line
-  Section line

OFFICE: Lands Resources Program Center  
 REGION: Intermountain Region  
 PARK: ZION  
 TOTAL ACREAGE: ± 124,380  
**DOCUMENT NUMBER: 116/122,034**  
**DATE: January 31, 2013**

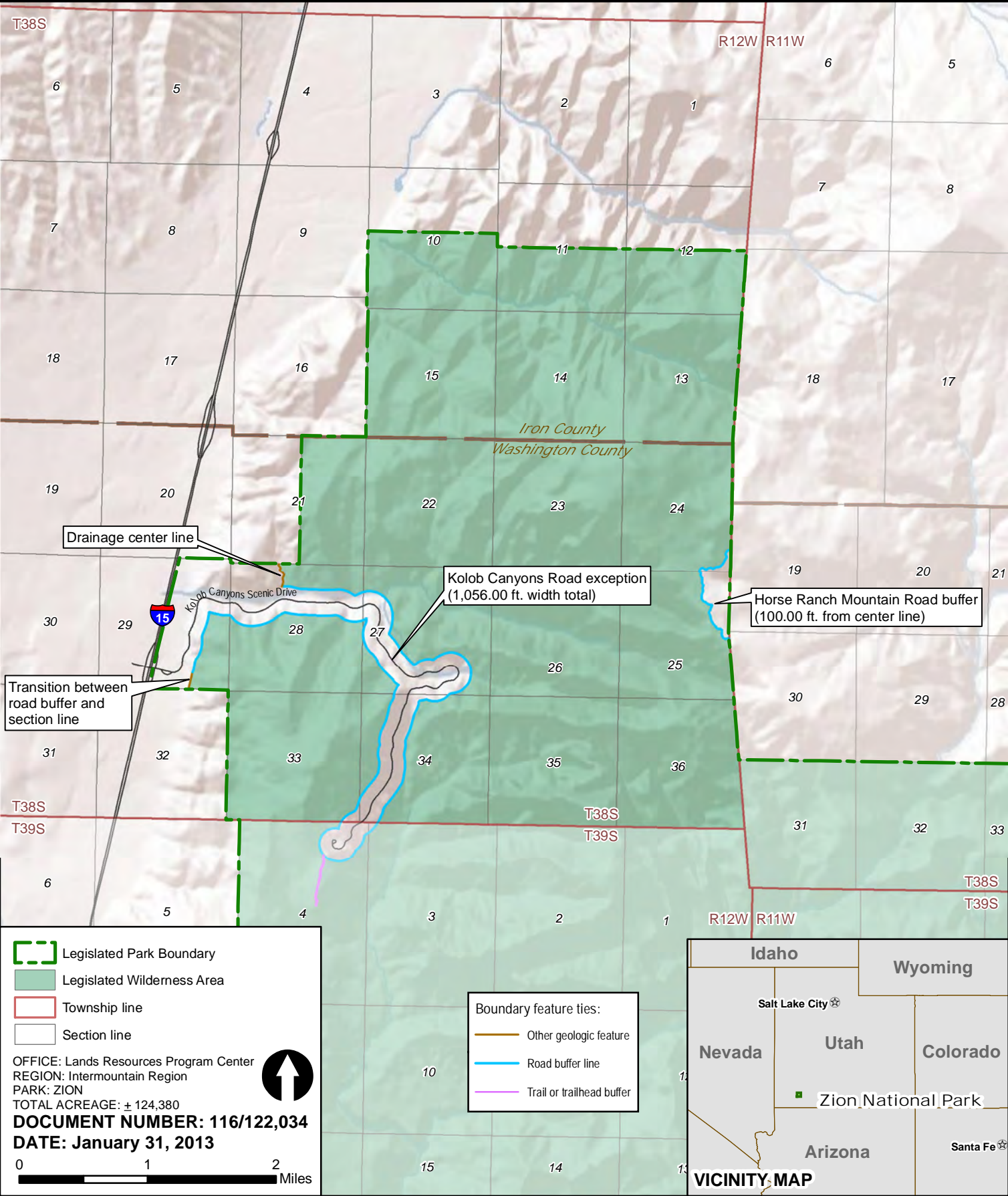


# Zion National Park

## Wilderness Boundary Exhibit: Map 13 of 14

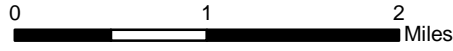
### T. 38 S., R. 12 W., Salt Lake Meridian

National Park Service  
U.S. Department of the Interior



- Legislated Park Boundary
- Legislated Wilderness Area
- Township line
- Section line

OFFICE: Lands Resources Program Center  
 REGION: Intermountain Region  
 PARK: ZION  
 TOTAL ACREAGE: ± 124,380  
**DOCUMENT NUMBER: 116/122,034**  
**DATE: January 31, 2013**



- Boundary feature ties:
- Other geologic feature
  - Road buffer line
  - Trail or trailhead buffer



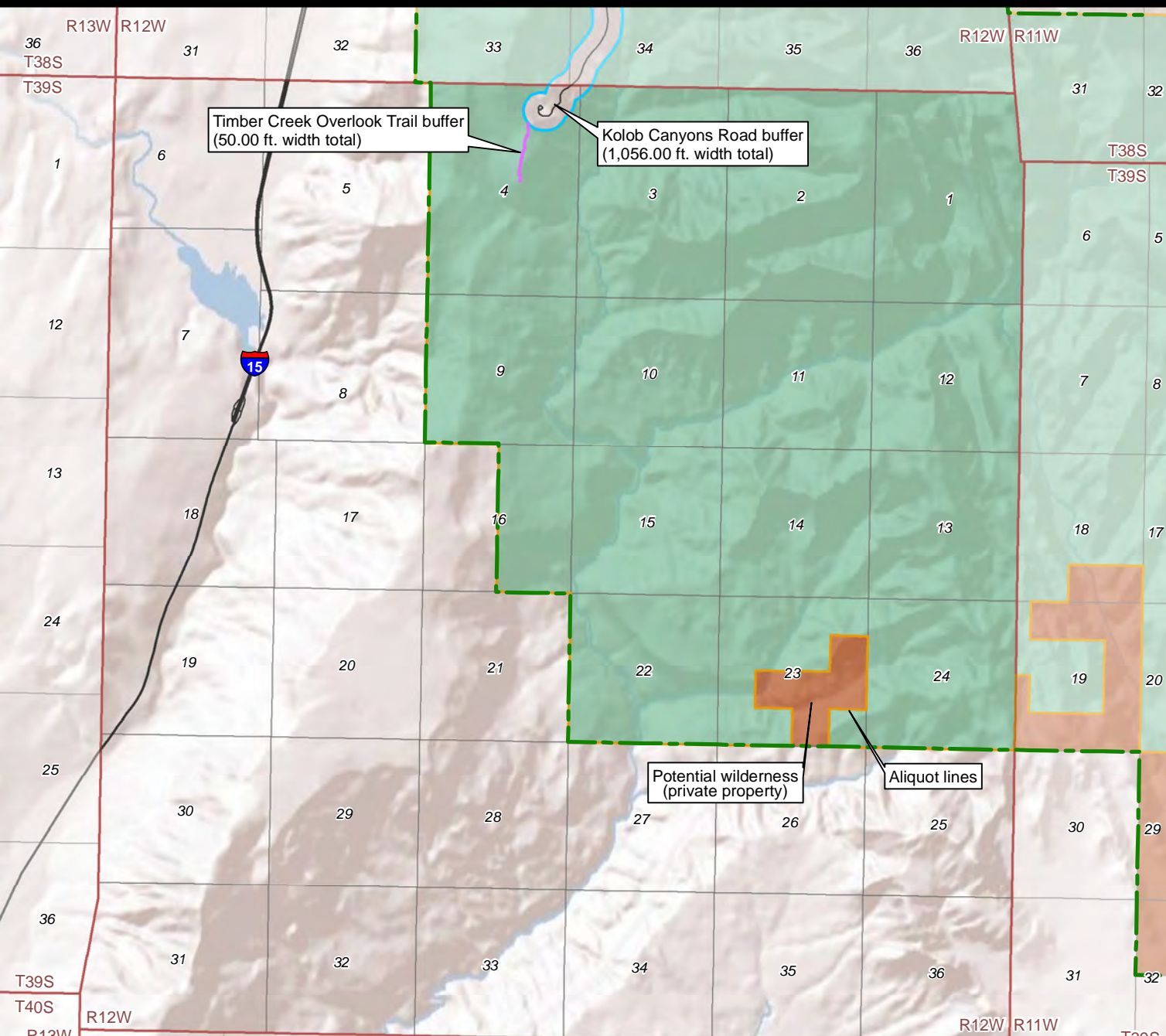
**VICINITY MAP**

# Zion National Park

## Wilderness Boundary Exhibit: Map 14 of 14

### T. 39 S., R. 12 W., Salt Lake Meridian

National Park Service  
U.S. Department of the Interior



- Legislated Park Boundary
- Legislated Wilderness Area
- Potential Wilderness
- Township line
- Section line

- Boundary feature ties:
- Aliquot line
  - Road buffer line
  - Trail or trailhead buffer

OFFICE: Lands Resources Program Center  
 REGION: Intermountain Region  
 PARK: ZION  
 TOTAL ACREAGE: ± 124,380  
**DOCUMENT NUMBER: 116/122,034**  
**DATE: January 31, 2013**

